

GRAY

ART BASEL
MIAMI BEACH

Dec 6 - 8, 2024
Booth H9

ART BASEL MIAMI BEACH

BOOTH H9

JEAN ARP
McARTHUR BINION
ROGER BROWN
ALEXANDER CALDER
JIM DINE
TORKWASE DYSON
THEASTER GATES
LEON GOLUB
DAVID HOCKNEY
RASHID JOHNSON
ALEX KATZ
JUDY LEDGERWOOD
ROY LICHTENSTEIN
JIM LUTES
JOAN MITCHELL
ROBERT MOTHERWELL
LOUISE NEVELSON
JAUME PLENSA
LEON POLK SMITH
EVELYN STATSINGER

JEAN ARP



Sommeil tourmenté, 1957

Bronze with brown patina

13 × 19 ½ × 12 ⅝ inches

33 × 49.5 × 32.1 cm

Unique, cast May 14, 1958



GRAY

McARTHUR BINION



self:portrait, 2024

Ink, paint stick and paper on board

48 × 40 × 2 1/8 inches

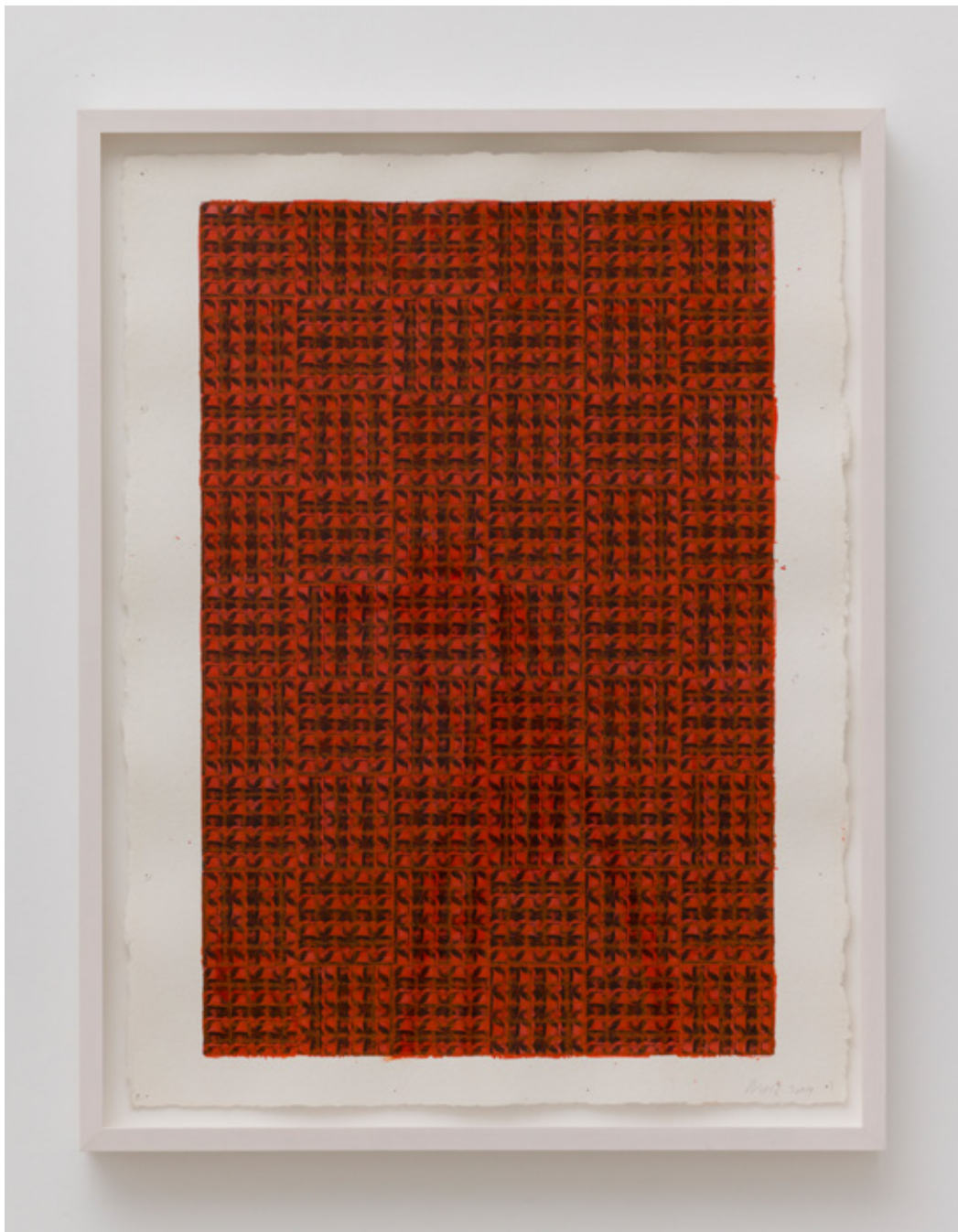
121.9 × 101.6 × 5.4 cm

GRAY



GRAY

McARTHUR BINION



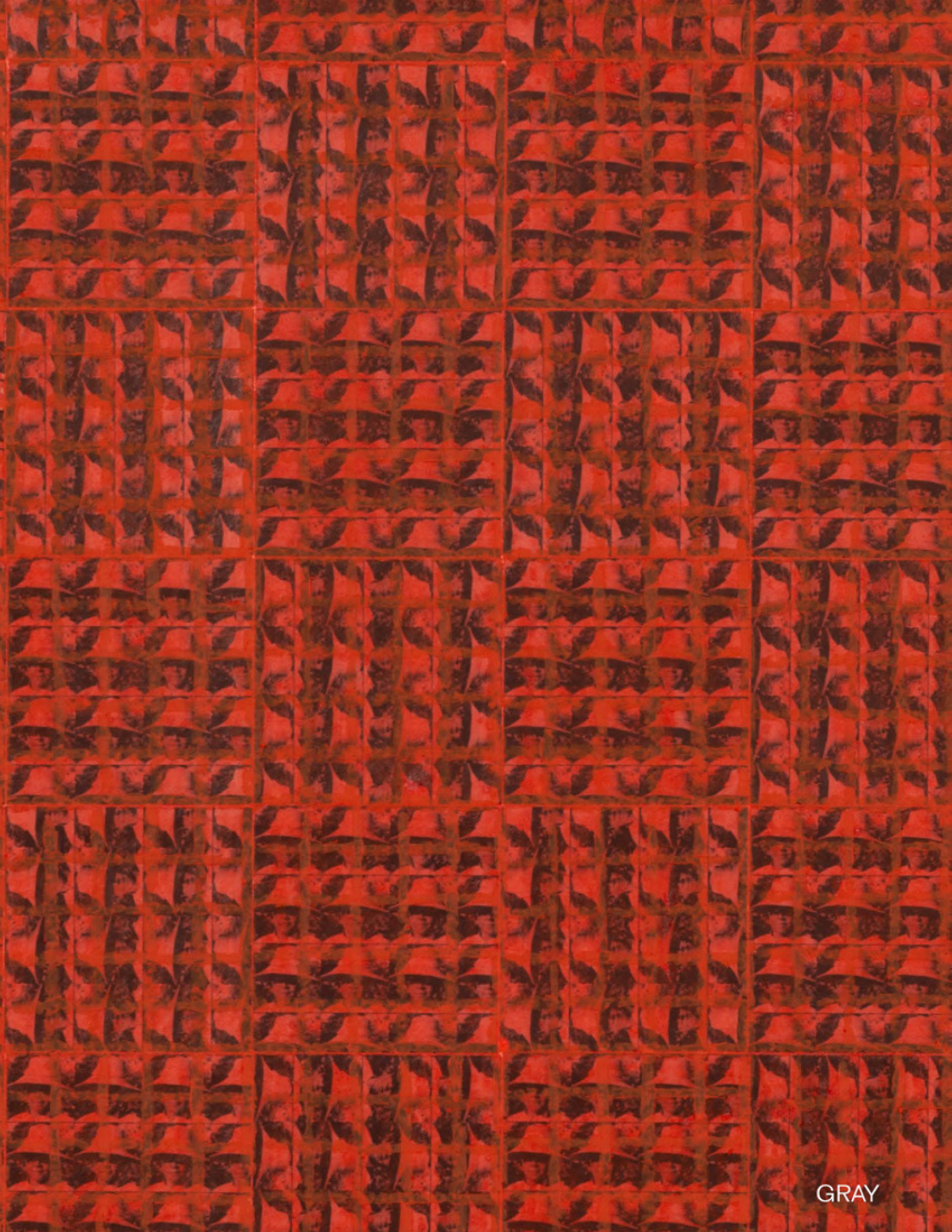
summer:detroit, 2024

Ink, oil paint stick and paper on paper

30 × 22 ½ inches (76.2 × 57.2 cm)

Framed: 32 ⅝ × 25 ¼ × 2 inches (82.9 × 64.1 × 5.1 cm)

GRAY



GRAY

ROGER BROWN



The Rose Garden (Rosa Rugosa Rubra), 1993

Oil on canvas

48 × 72 inches (121.9 × 182.9 cm)

Framed: 49 ³/₄ × 73 ³/₄ × 3 inches (126.4 × 187.3 × 7.6 cm)



GRAY

TORKWASE DYSON



Sensoria, 2024
Acrylic, graphite and ink on canvas
56 × 48 inches
142.2 × 121.9 cm



GRAY

TORKWASE DYSON



Scalar 1 (Hypershape), 2024
Cast glass, graphite and wood
24 ¼ × 25 × 3 ⅝ inches
61.6 × 63.5 × 9.2 cm



GRAY

TORKWASE DYSON



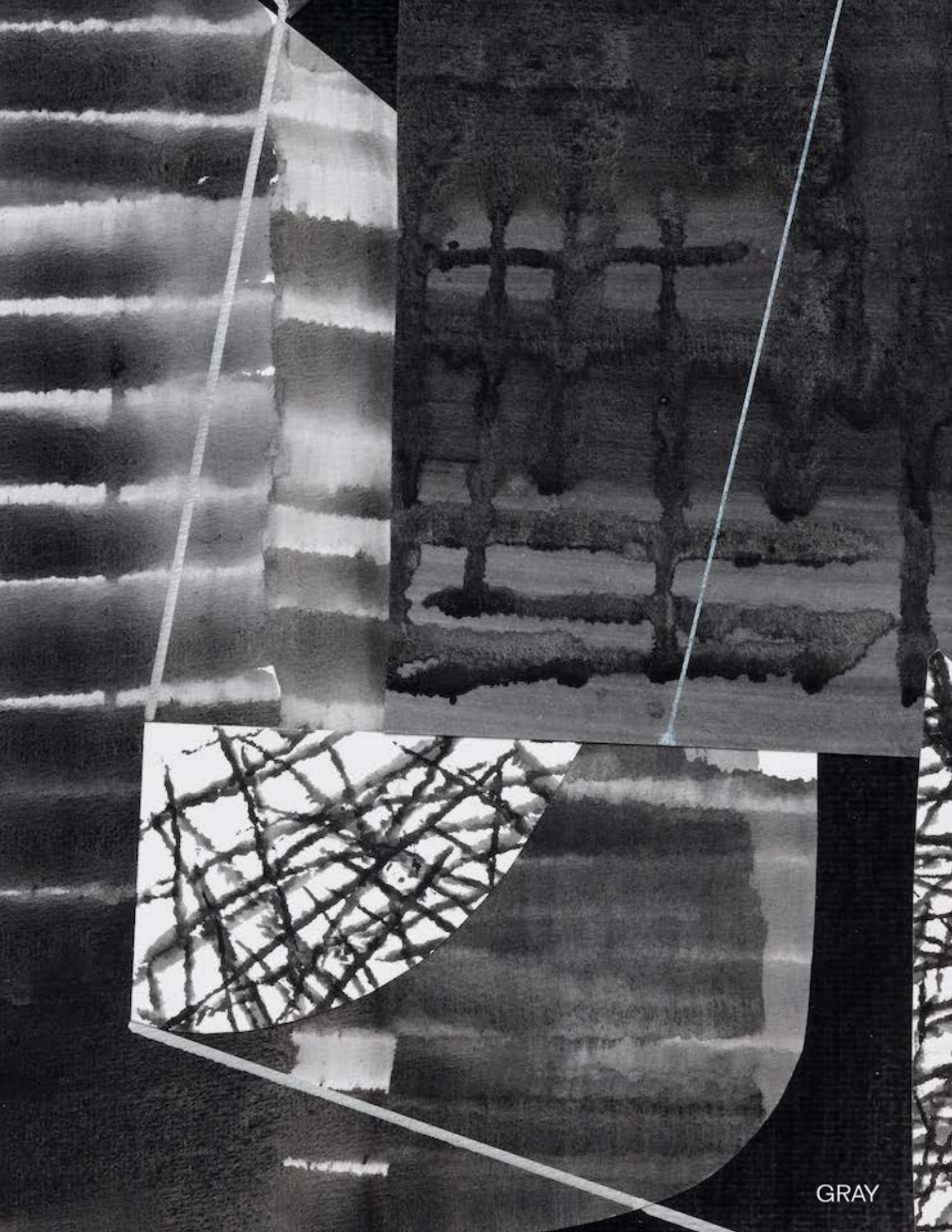
Hand to Hand, Heart to Heart 6, 2024

Graphite, gouache and ink on paper

16 × 11 ½ inches (40.6 × 29.2 cm)

Framed: 21 ¾ × 17 × 2 inches (54.3 × 43.2 × 5.1 cm)

GRAY



GRAY

THEASTER GATES



An Unfortunate New America, 2019
Wood and decommissioned fire hose
60 × 40 × 7 ½ inches
52.4 × 101.6 × 19.1 cm



GRAY

THEASTER GATES



Silver monochrome with 3 lines, 2022

Wood, water-based acrylic, rubber and tar

84 ¼ × 36 ½ × 5 ¾ inches

214 × 92.7 × 14.6 cm

THEASTER GATES



For Art Basel Kabinett, GRAY debuts an installation of new ceramics by Theaster Gates.

GRAY

LEON GOLUB



Head (VIII), 1958

Oil on canvas

20 ¼ × 17 ¼ inches (51.4 × 43.8 cm)

Framed: 21 ⅝ × 18 ⅝ × 1 ½ inches (54.9 × 47.3 × 3.8 cm)



GOLUB

GRAY

DAVID HOCKNEY



30th January 2021, The First One, 2021

iPad painting printed on paper

35 × 25 inches (88.9 × 63.5 cm)

Framed: 36 ³/₄ × 26 ³/₄ × 1 ¹/₂ inches (93.3 × 67.9 × 3.8 cm)

Edition of 50

RASHID JOHNSON



Larry (Seeing in the Dark Series), 1999

Toned gelatin silver print

Image: 10 x 8 inches (25.4 x 20.3 cm)

Framed: 15 ½ x 13 ½ x 1 ⅝ inches (39.4 x 34.3 x 4.1 cm)

ALEX KATZ



Jessica in Pink, 2005

Oil on linen

48 × 72 inches (121.9 × 182.9 cm)

Framed: 48 ½ × 72 ½ × 1 inches (123.2 × 184.2 × 2.5 cm)



GRAY

ALEX KATZ



Autumn 8, 2022

Oil on linen

84 ¼ × 84 ⅜ inches

214.2 × 214.5 cm



ALEX KATZ



Study for Autumn 2, 2022

Oil on board

11 ⁷/₈ × 15 ⁷/₈ inches (30.2 × 40.3 cm)

Framed: 18 ¹/₂ × 22 ¹/₂ × 2 ¹/₄ inches (47 × 57.2 × 5.7 cm)

JUDY LEDGERWOOD



Ugly Baby, 2015
Oil on linen
84 × 60 inches
213.4 × 152.4 cm



ROY LICHTENSTEIN



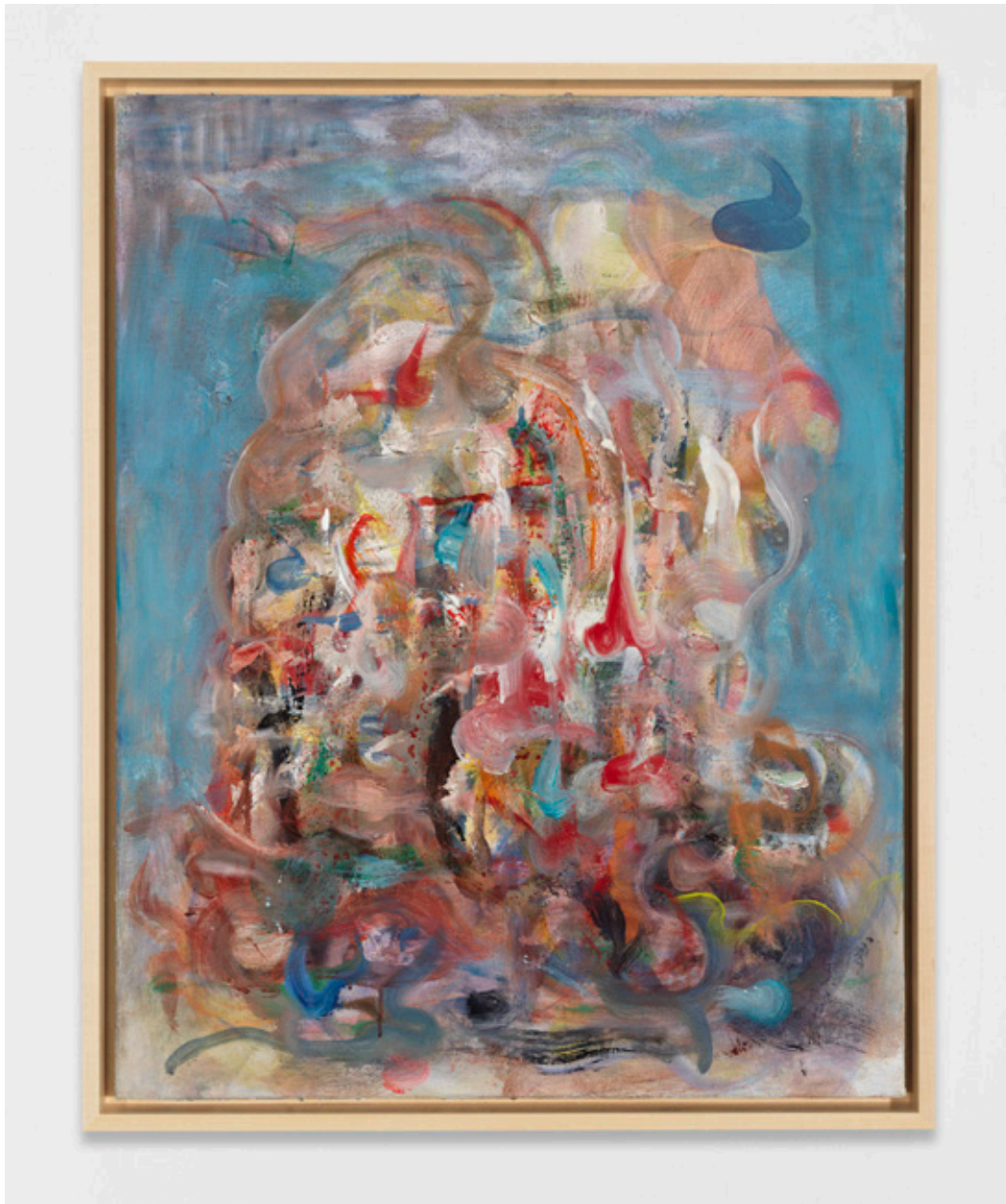
Glass III, c. 1976

Painted and patinated bronze

33 × 19 ¾ × 12 ½ inches (83.8 × 50.2 × 31.8 cm)

Edition 2 of 3, cast 1976-77

JIM LUTES



Inconvenient Protuberance, 2020

Egg oil tempera on canvas

28 × 22 inches (71.1 × 55.9 cm)

Framed: 29 ³/₄ × 23 ³/₄ × 1 ³/₄ inches (75.6 × 60.3 × 4.4 cm)

JOAN MITCHELL



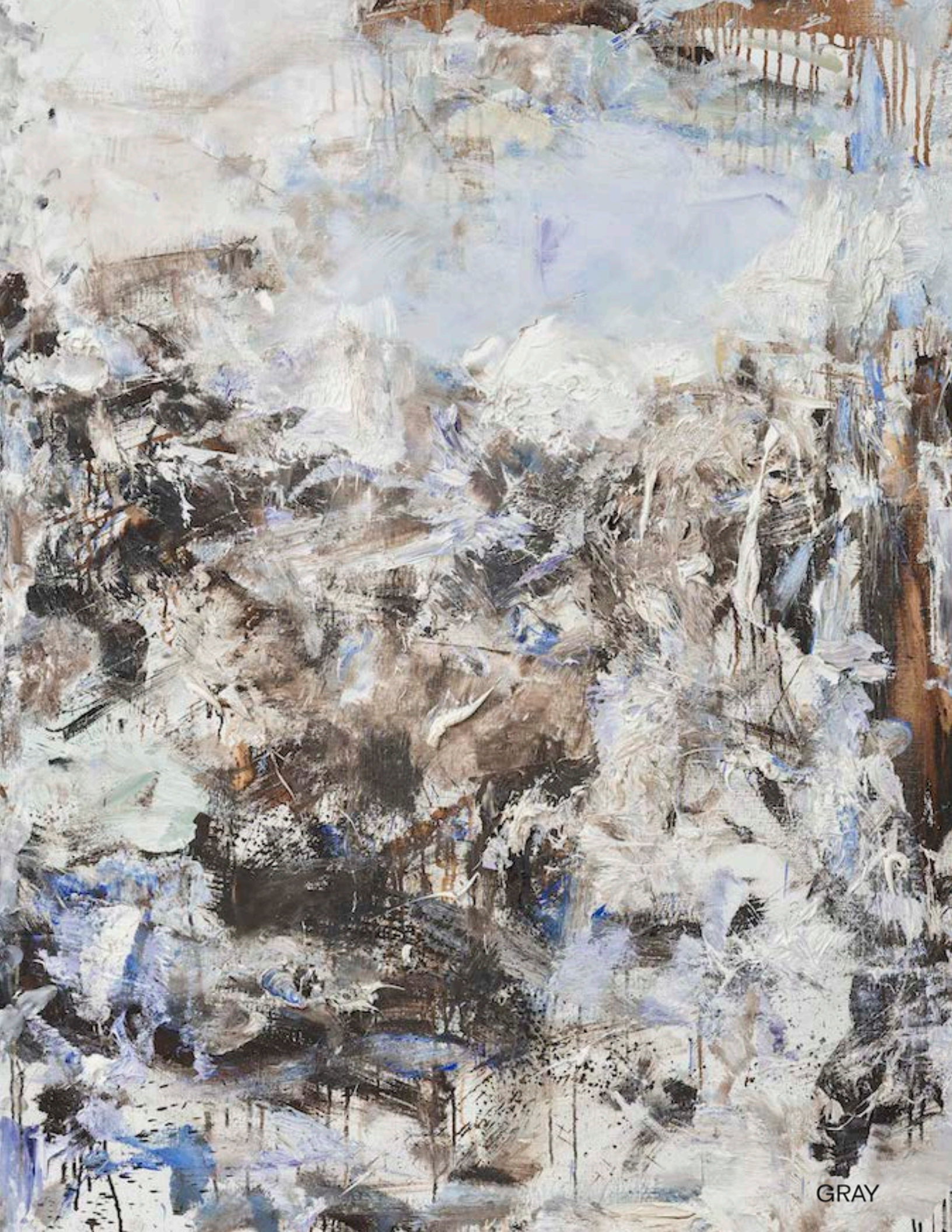
Untitled (Canada), 1975

Oil on canvas

Each panel: 45 × 34 ½ inches (114.3 × 87.6 cm)

Overall: 45 × 69 ½ inches (114.3 × 175.6 cm)

Framed: 51 × 73 ¾ × 2 ⅜ inches (129.7 × 187.5 × 6 cm)



GRAY

ROBERT MOTHERWELL



The Grand Inquisitor (Catalonia), 1989-90

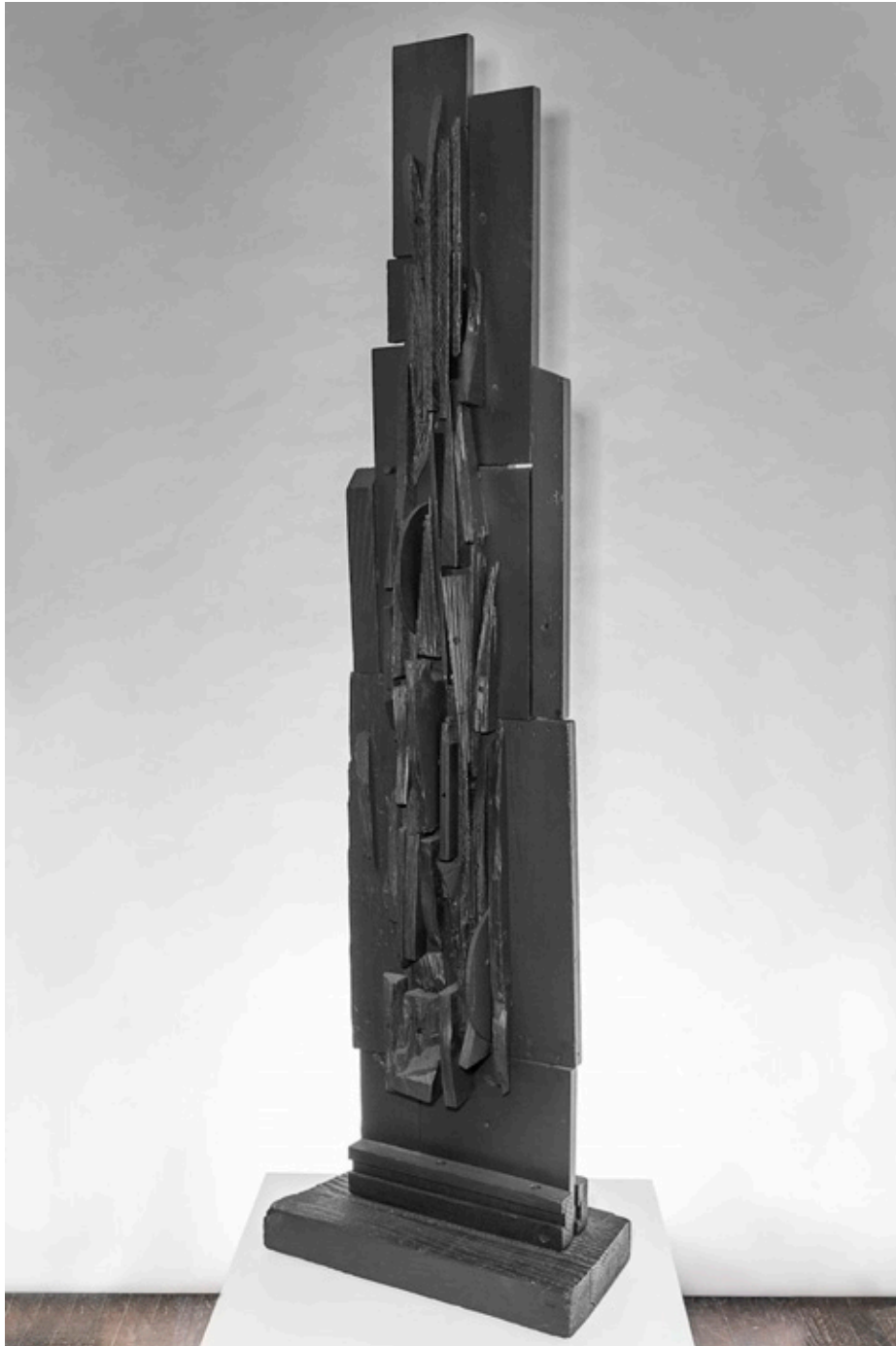
Acrylic and graphite on canvas

72 × 171 1/8 inches

182.9 × 434.7 cm



LOUISE NEVELSON



Spire, c. 1950–59
Black-painted wood
64 × 18 ³/₄ × 9 ¹/₈ inches
162.6 × 47.6 × 23.2 cm

JAUME PLENSA



Juana, 2022

Stainless steel

121 ⁵/₈ × 30 ⁵/₈ × 53 ⁷/₈ inches

309 × 78 × 137 cm



Installation view of *Jaume Plensa: Secret Garden*, GRAY Chicago, 2017

GRAY

JAUME PLENSA



Juana's Frozen Dreams, 2021

Murano glass

16 $\frac{7}{8}$ × 7 $\frac{7}{8}$ × 7 $\frac{7}{8}$ inches (42.9 x 20 x 20 cm)

Edition of 8



GRAY



LEON POLK SMITH

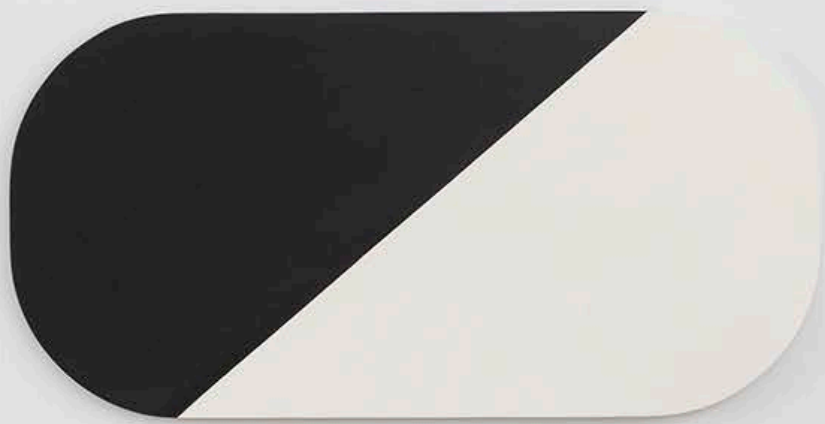


Black-White Diagonal, 1957

Paint on canvas

27 ½ × 55 ¼ inches

69.9 × 140.3 cm



GRAY


EVELYN STATSINGER



Layering, 1990
Oil on canvas
34 × 40 inches
86.4 × 101.6 cm



GRAY

An abstract painting featuring a large black shape at the top, a bright yellow background, and a large orange section with thin black lines. At the bottom, there are two large, jagged red shapes. The overall style is expressive and gestural.

ART BASEL MIAMI BEACH
BOOTH H9

Sales Inquiries: inquiries@richardgraygallery.com

GRAY

richardgraygallery.com