

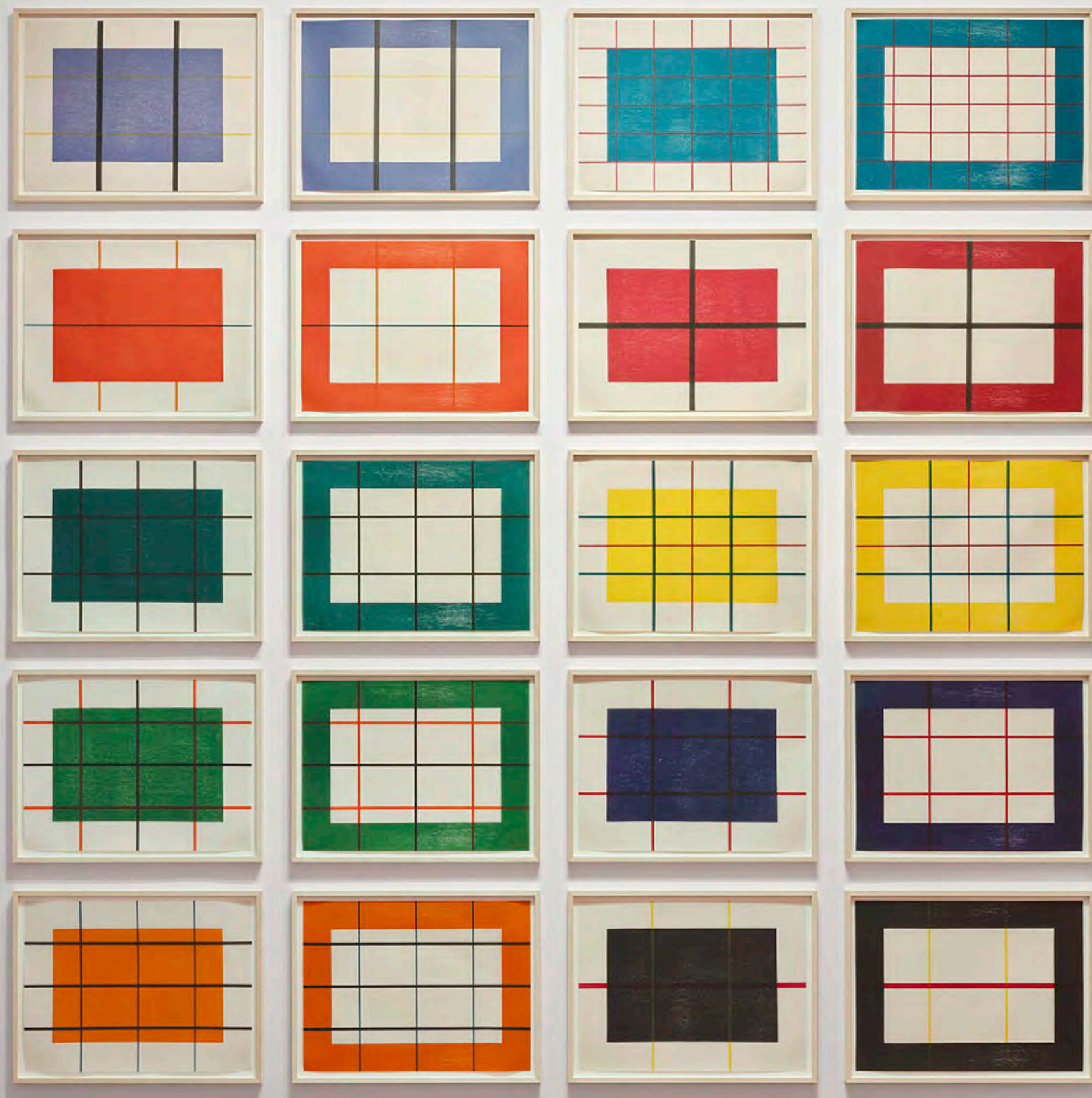


CAROLINA NITSCH

ART BASEL
MIAMI BEACH

2024

Booth J10



DONALD JUDD

Untitled (#271-290), 1992–93

The complete suite of twenty woodcuts in cadmium red, cadmium yellow, cadmium orange, ultramarine blue, cerulean blue, cobalt blue, permanent green, viridian green, black, alizarin crimson on handmade Hanji paper
23 5/8 x 31 1/2 in. (60 x 80 cm) each
Frame: 26 5/8 x 34 1/2 x 1 3/8 in. (67.5 x 87.5 x 3.5 cm) each
Edition 25
Foundation Stamped as issued
JUD-0066

\$450,000
Please Inquire

THOMAS SCHÜTTE

Frau XII, 2024

Patinated bronze on steel base

8 1/4 x 13 x 8 1/2 in. (21 x 33 x 21.5 cm)

Base: 47 1/4 x 12 x 17 in. (120 x 30 x 43 cm)

Edition of 20

SCT-0127

\$85,000

Please Inquire



THOMAS SCHÜTTE

Frau XV, 2024

Patinated bronze on steel base

18 1/2 x 12 1/2 x 5 1/4 in. (47.5 x 32 x 13.5 cm)

Base: 47 1/4 x 15 3/4 x 23 3/4 inches (120 x 40 x 60 cm)

Edition of 20

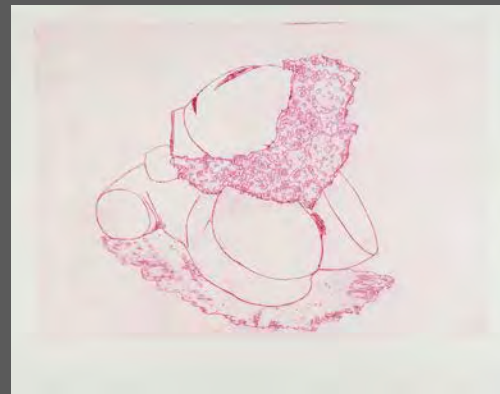
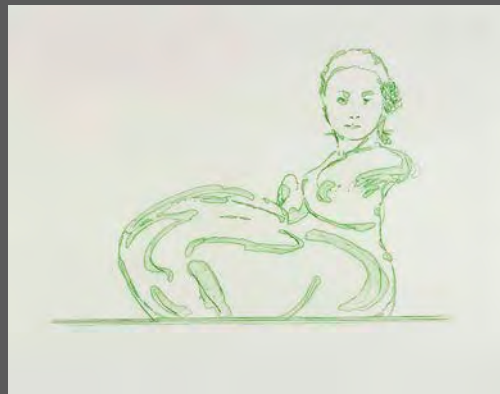
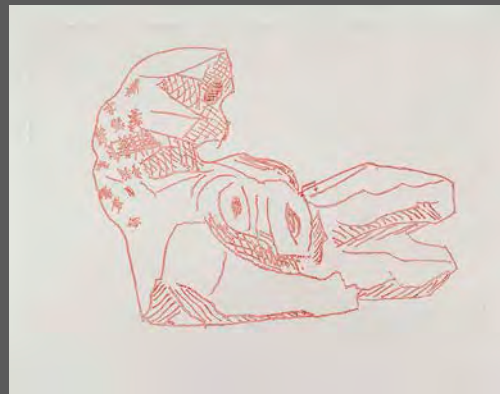
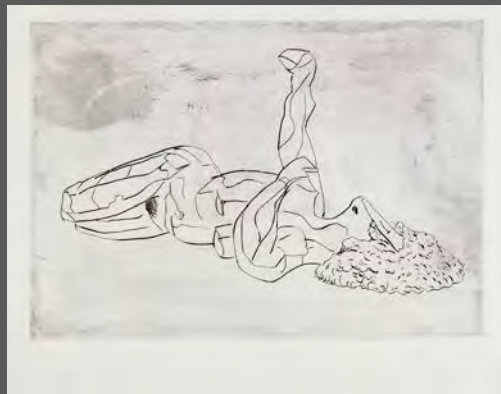
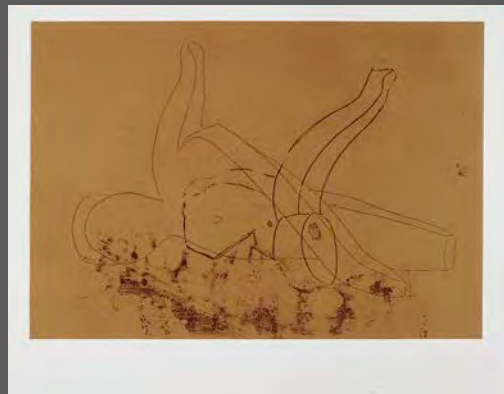
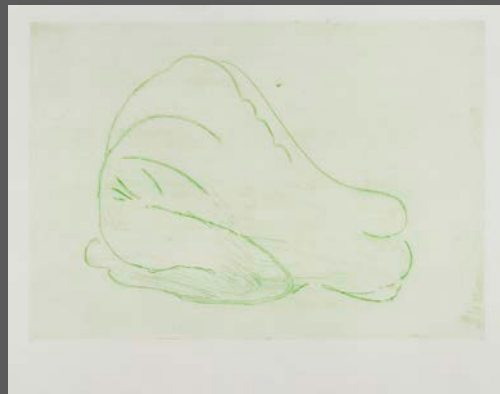
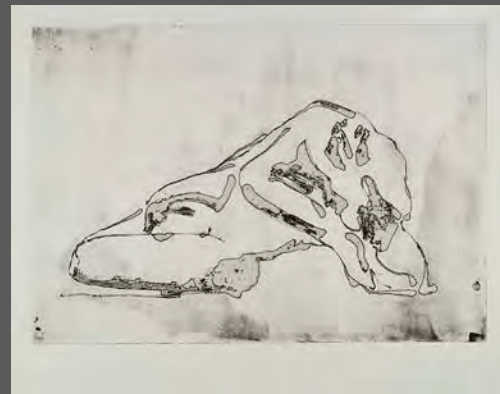
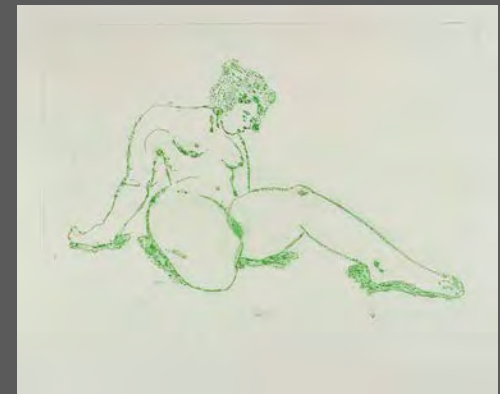
SCT-0130

\$85,000

Please Inquire







THOMAS SCHÜTTE

Frauen (C), 2006

Suite of 18 color etchings on Zerkall-Bütten paper

Each sheet signed, dated and numbered

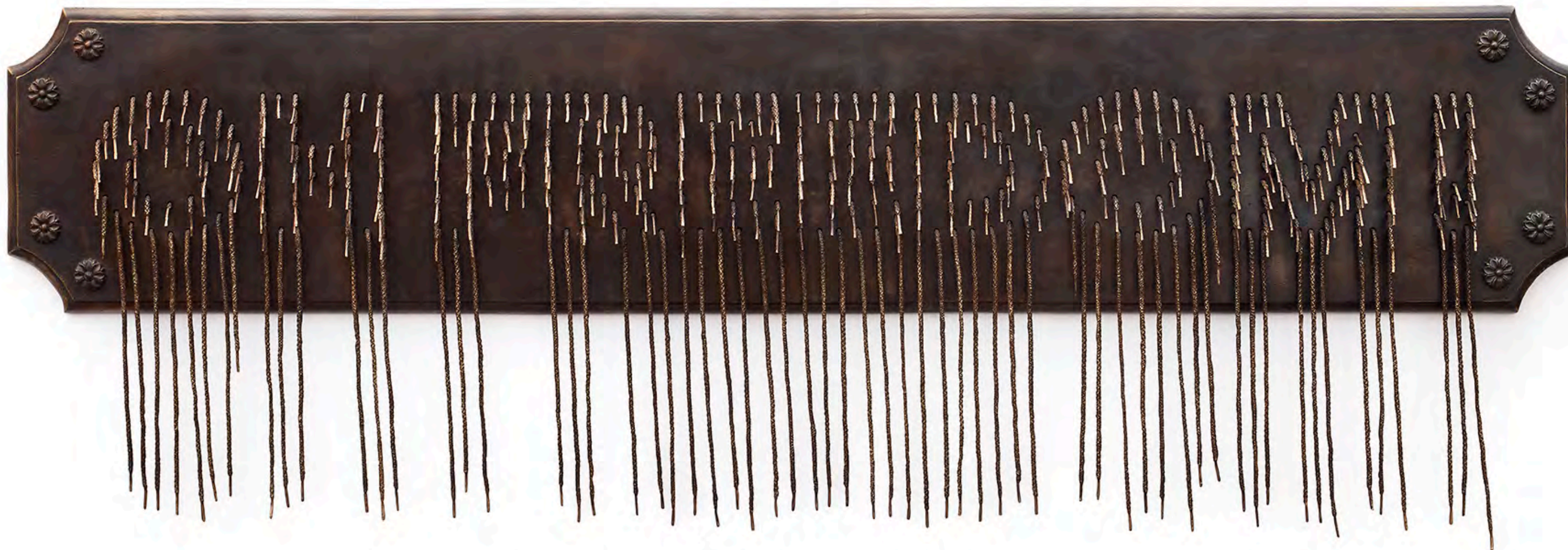
Each 24 x 32 in. (61 x 81 cm)

Edition of 35 sets

SCT-0009

\$85,000

Please Inquire

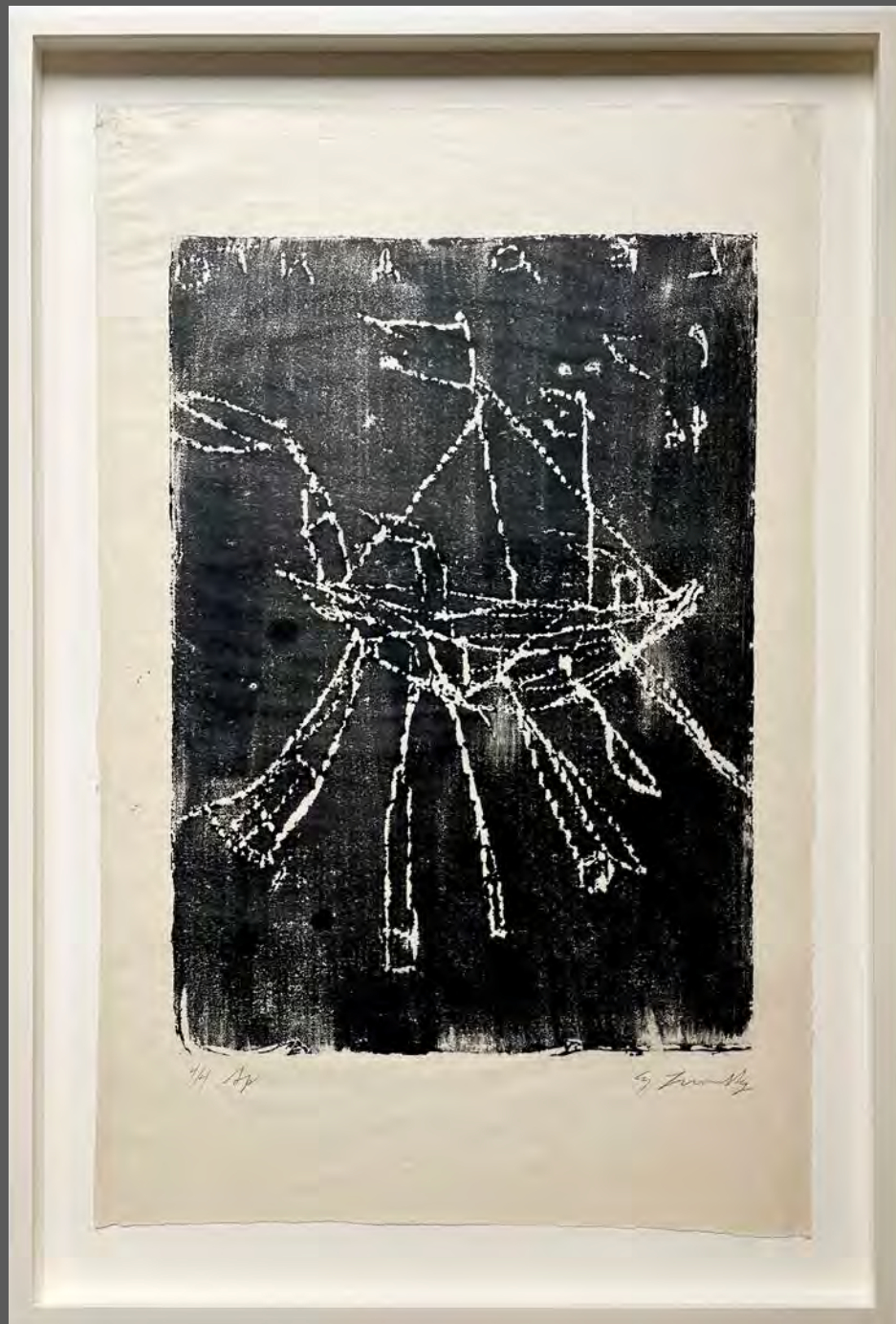


NARI WARD

OH FREEDOM!, 2024-25

Cast bronze
19 1/2 x 57 x 3 in.
Edition of 12, with 3 AP
Incised with initials, date, edition number, foundry mark
Published by Carolina Nitsch for Prospect, New Orleans
© Nari Ward Studio.
WRD-0002

\$50,000
Please Inquire



CY TWOMBLY

Lepanto I, II, III, 1996

Suite of three monotypes, hand pulled
by the artist on Japon paper
39 x 24 1/2 in. (99.1 x 62.2 cm)
Each signed and numbered recto
TWO-0008

\$1,100,000

Please Inquire



LOUISE BOURGEOIS

The Ticking Clock, 2007

Archival dyes on fabric collage,
with wood collage, sewn to linen
embroidered LB

48 1/4 x 36 1/8 in. (122.6 x 91.8 cm)

Unique
BOU-0304

\$900,000

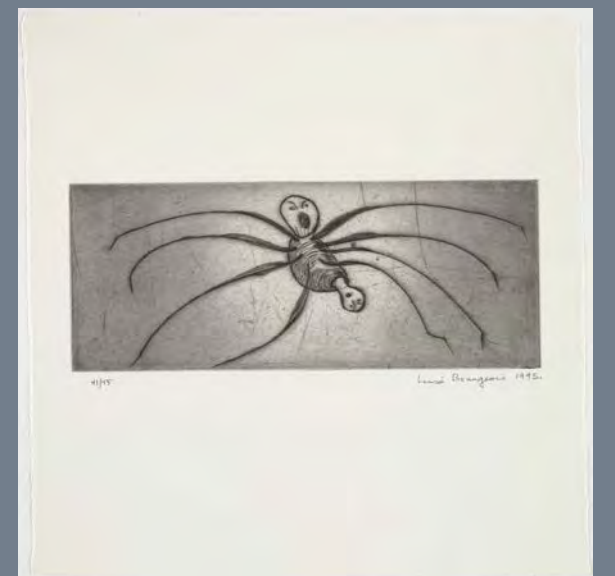
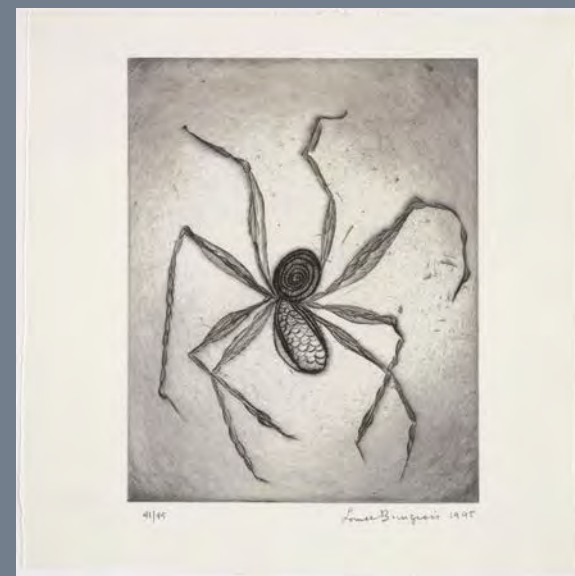
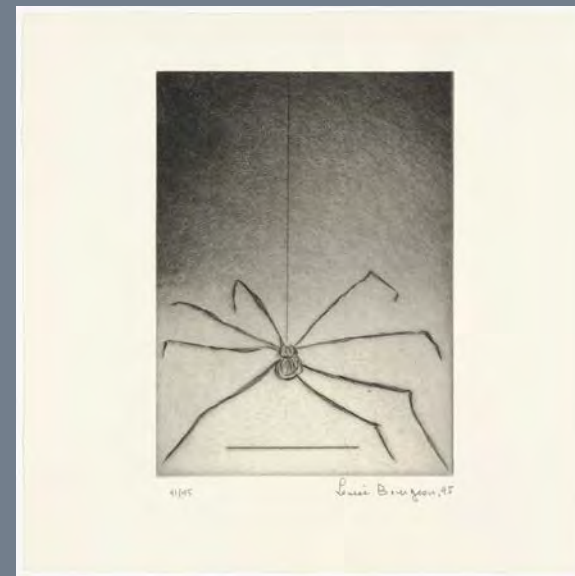
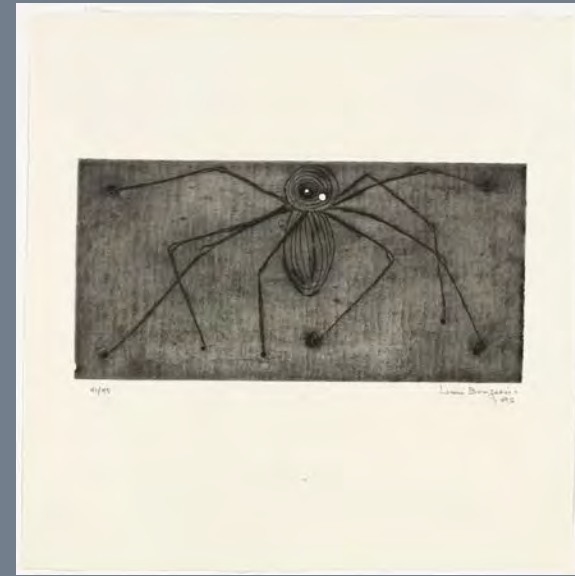
Please inquire

LOUISE BOURGEOIS

Ode à ma mère, 1995

Suite of nine etchings
Each 12 x 12 in. (30.48 x 30.48 cm)
Edition of 45
Each sheet signed, numbered, dated
BOU-0115

\$125,000
Please inquire





1/1

Louise Bourgeois 95

LOUISE BOURGEOIS

Spider, 1995

Drypoint on paper
21 1/4 x 15 7/8 in. (54 x 40.3 cm)

Signed and numbered

Edition of 35

BOU-0082

\$70,000

Please inquire

EXTREME
SELF-CONSCIOUSNESS
LEADS TO PERVERSION

BORING
THEY'RE
TESTS

PEOPLE ARE BORING
UNLESS THEY'RE
EXTREMISTS

PEOPLE ARE BORING
UNLESS THEY'RE
EXTREMISTS

PEOPLE
UNL
EX

OLD FRIENDS
ARE BETTER LEFT
IN THE PAST

OLD FRIENDS
ARE BETTER LEFT
IN THE PAST

OLD FRIENDS
ARE BETTER LEFT
IN THE PAST

OLD FRIENDS
ARE BETTER LEFT
IN THE PAST

OLD FRIENDS
ARE BETTER LEFT
IN THE PAST

EXTREME
SELF-CONSCIOUSNESS
LEADS TO PERVERSION

IT'S BETTER TO BE
NAIVE THAN JADED

IT'S BETTER TO BE
NAIVE THAN JADED

JENNY HOLZER

*TRUISMS (selections from 1977-79)
Portable digital projection, 2013*

49 minute digital animation loop, running on HD mini projector in a custommade enclosure. Powered by internal battery (1.5 hours) or AC current. Housed in a portable stormproof carrying case. Signed and numbered on exterior of enclosure. Box: 8 x 5 1/2 x 3 3/4 in. (20.3 x 14 x 9.5 cm) Case: 13 1/2 x 11 1/2 x 6 in. (34 x 29.5 x 15 cm) Edition of 12 Numbered and signature stamped on the bottom HOL-0009

\$45,000
Please Inquire



MICKALENE THOMAS

Something You Can Feel, 2024

UV pigment on gold mirror dibond, silver mirror dibond, and gold plexiglas mounted on sintra; wood veneer collage, black and blue glitter applied by hand, framed 41 ¼ x 50 ½ x 2 in. (104.8 x 128.3 x 5.1 cm)

Edition of 18

Signed, dated, numbered verso

Published by Carolina Nitsch for the New Museum of Contemporary Art, NY

THO-0002

\$60,000

Please Inquire



KIKI SMITH

Summer, 2024

Dyeprint on linen with eleven hand embossed sterling silver elements
sewn on

72 x 35 in. (182.9 x 88.9 cm)

Frame: 76 ³/₄ x 39 ³/₄ x 2 ¹/₂ in (195 x 101 x 6.4 cm)

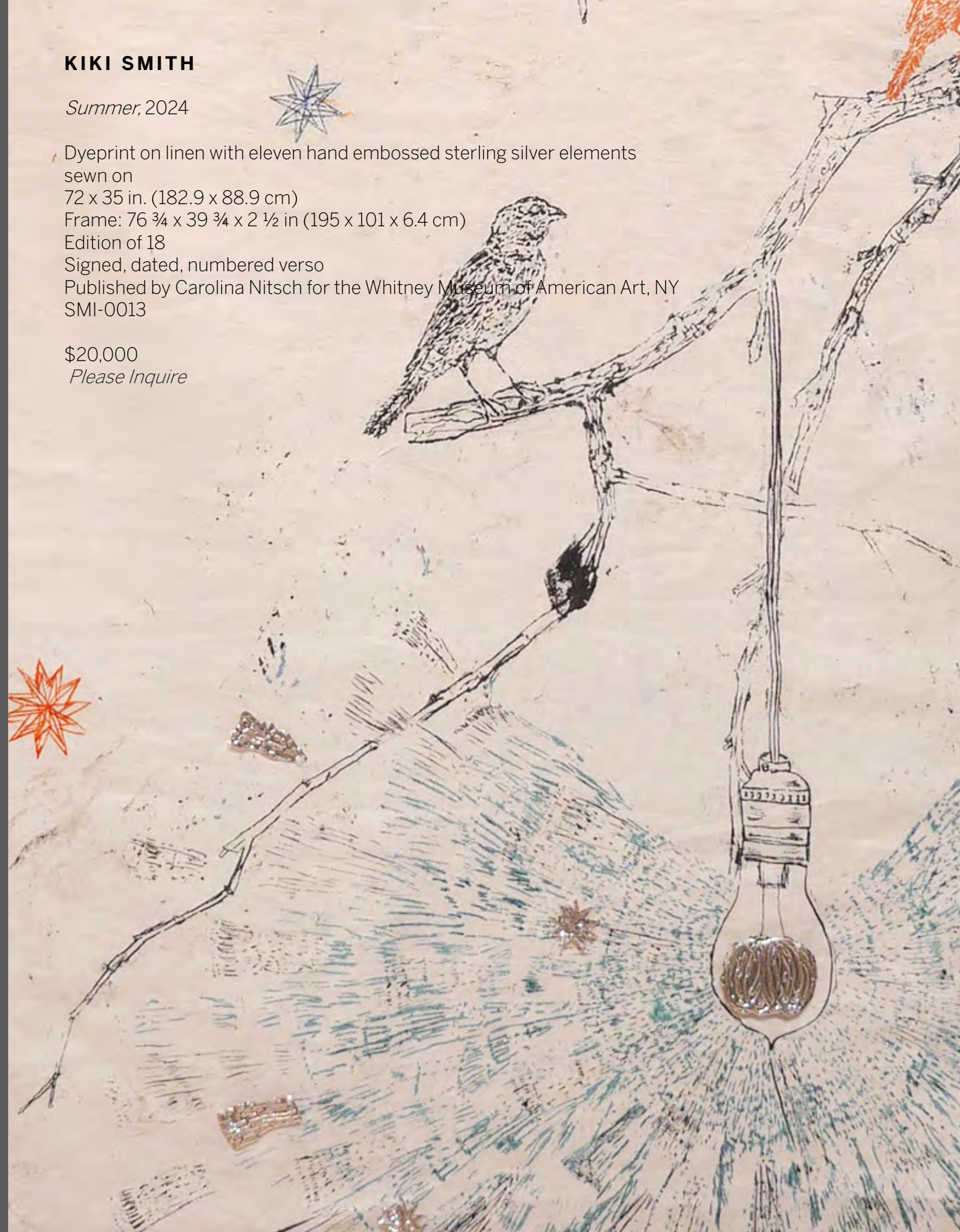
Edition of 18

Signed, dated, numbered verso

Published by Carolina Nitsch for the Whitney Museum of American Art, NY
SMI-0013

\$20,000

Please Inquire





VERA LUTTER

Studio, XIX: May 6–25, 2005, 2005

Unique silver gelatin print, framed in three parts

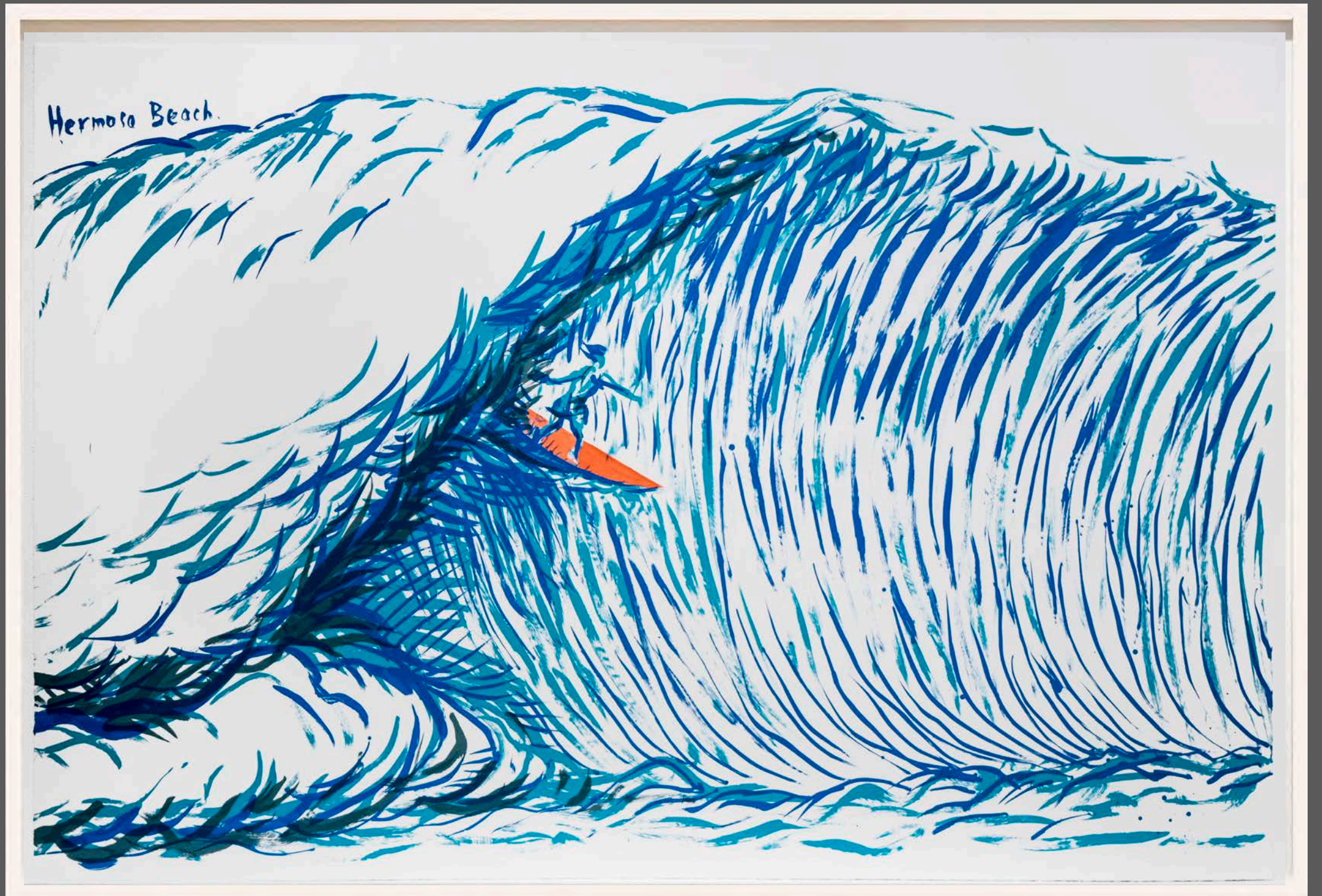
89 3/16 x 168 in. (227 x 427 cm)

Signed, dated, titled verso

LUT-0033

\$165,000

Please Inquire



RAYMOND PETTIBON

Untitled (Hermosa Beach), 2019

Color lithograph, hand coloring
45 1/8 x 67 1/2 in. (114.6 x 171.4 cm)
Frame: 49 x 71 x 2 in (124.4 x 180.3 x 5.1 cm)
Edition of 48 unique variants
Signed and numbered
PET-0024

\$195,000

Please Inquire

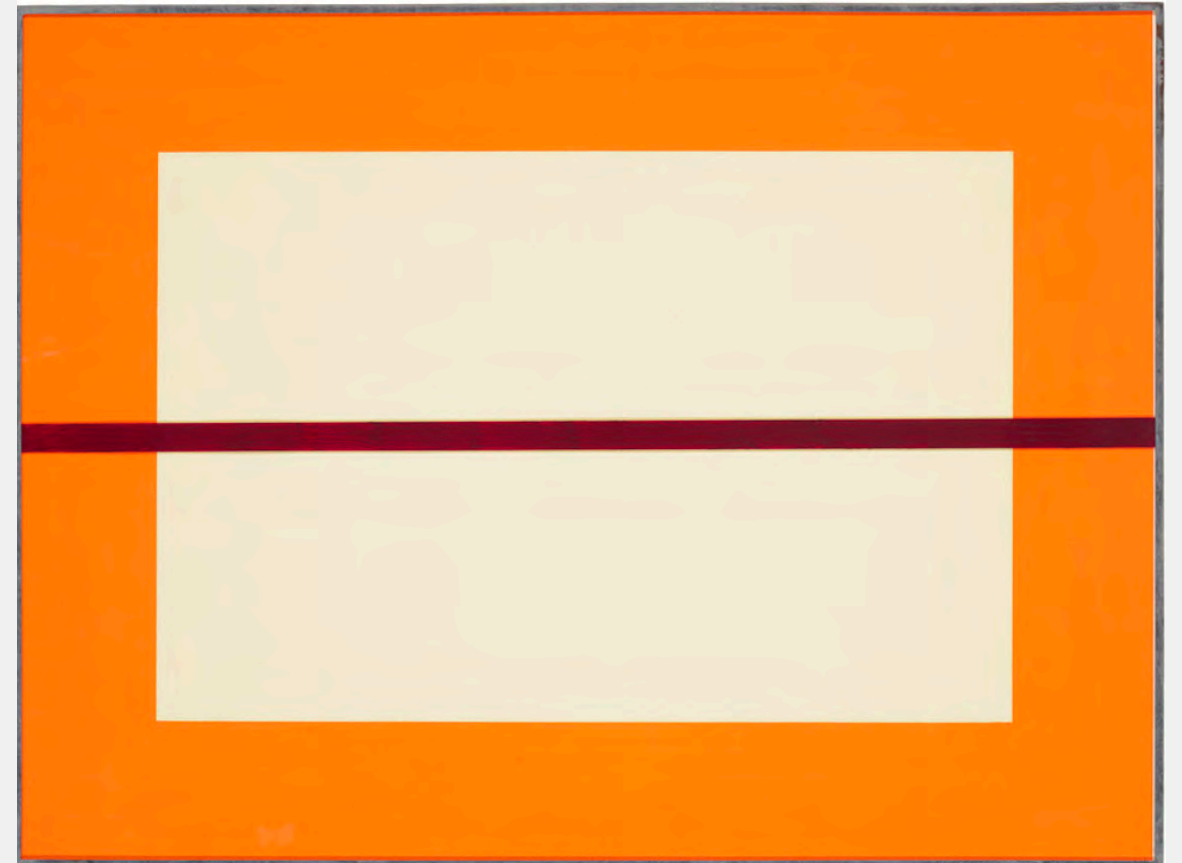
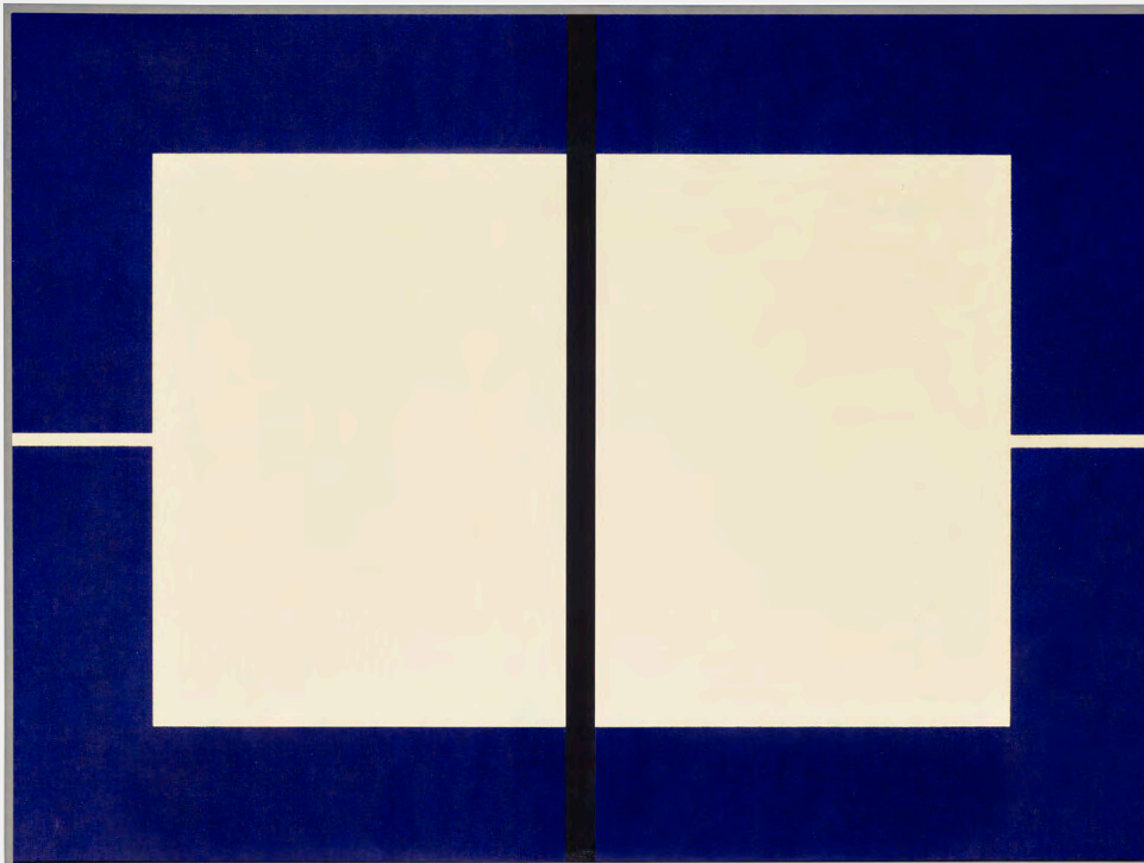
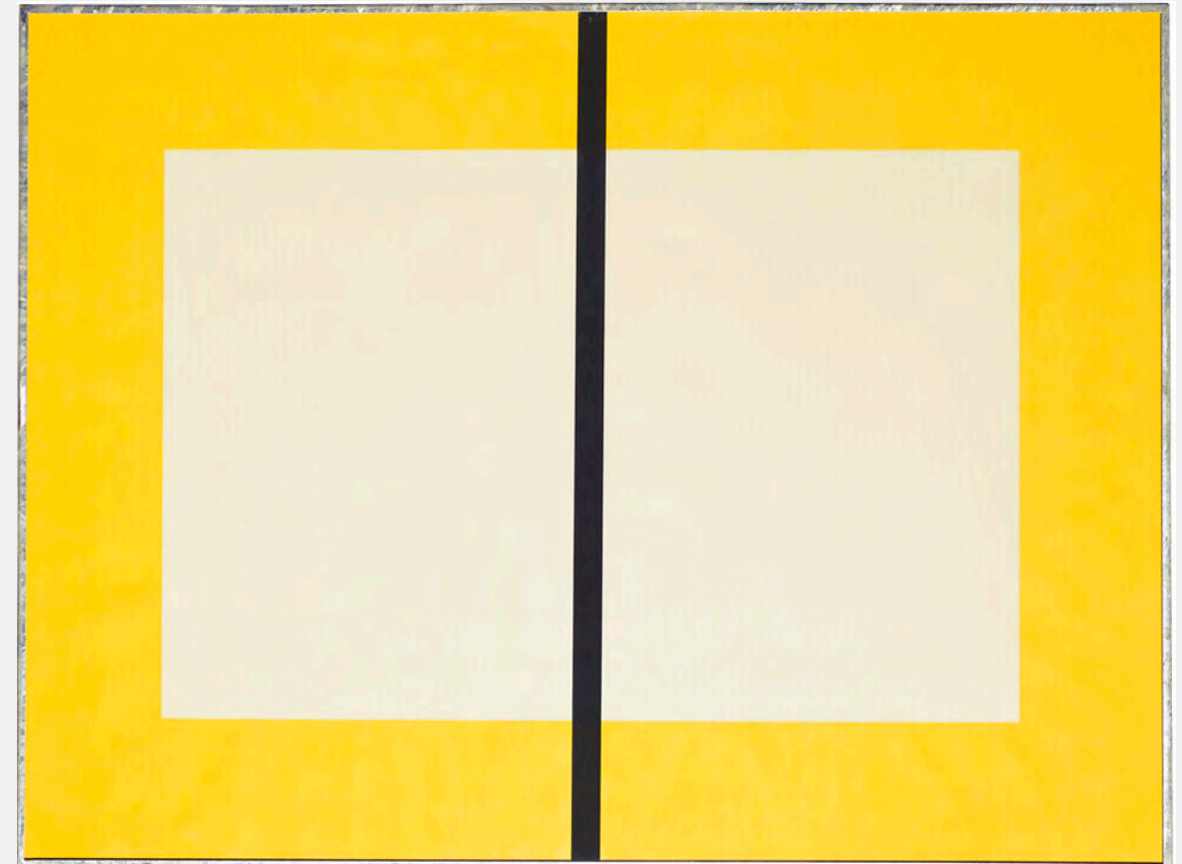
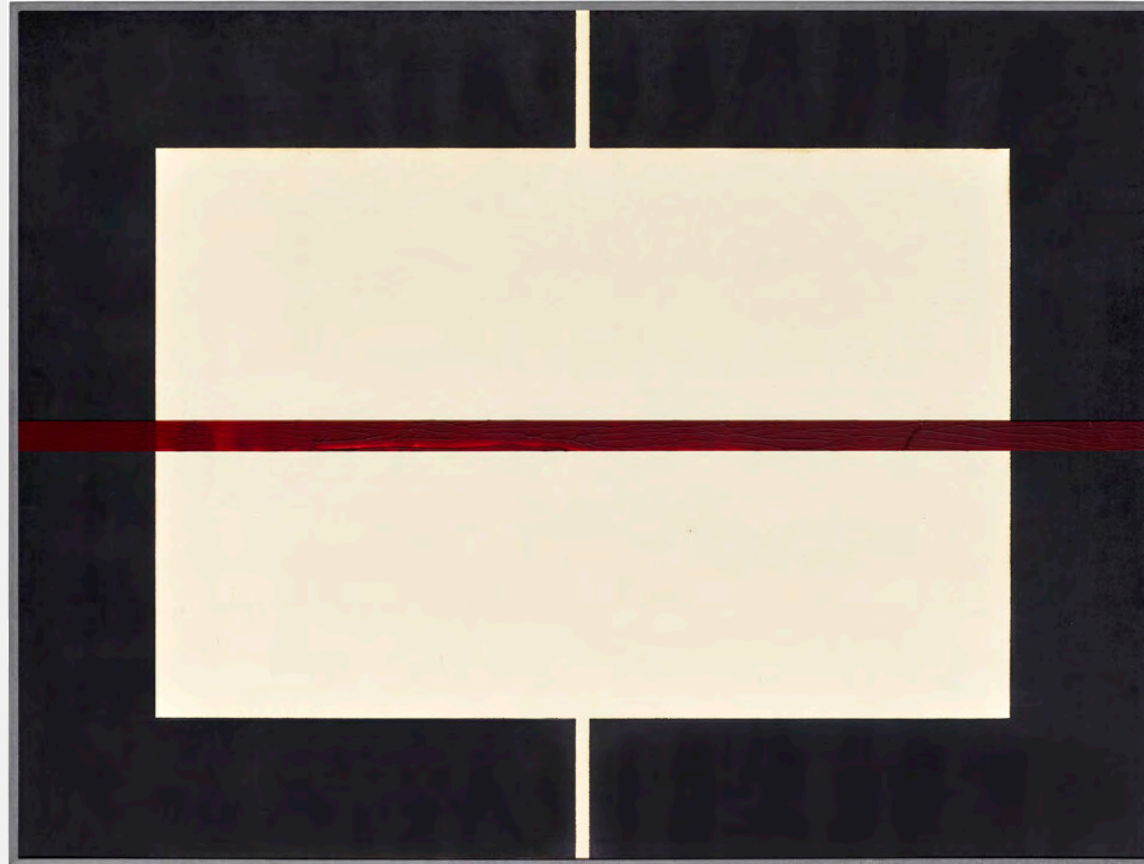
RAYMOND PETTIBON

Our Secret Spot, 2022

6-color lithograph on Rives BFK
44 ¾ x 30 ¾ in. (113.7 x 78.1 cm)
Frame: 47 ½ x 33 ½ x 1 ½ in (113.6 x 85.1 x 3.8 cm)
Edition of 35
Signed and numbered in pencil
PET-0031

\$70,000
Please Inquire





DONALD JUDD

Untitled (#298-301), 1993

Set of four color woodcuts on Japanese paper; printed in black, orange, yellow, ultramarine blue; and with an oil paint strip on the museum glass of each frame

Frame: 24 3/8 x 32 1/4 x 1 3/16 in. (61.9 x 81.9 x 3 cm) each

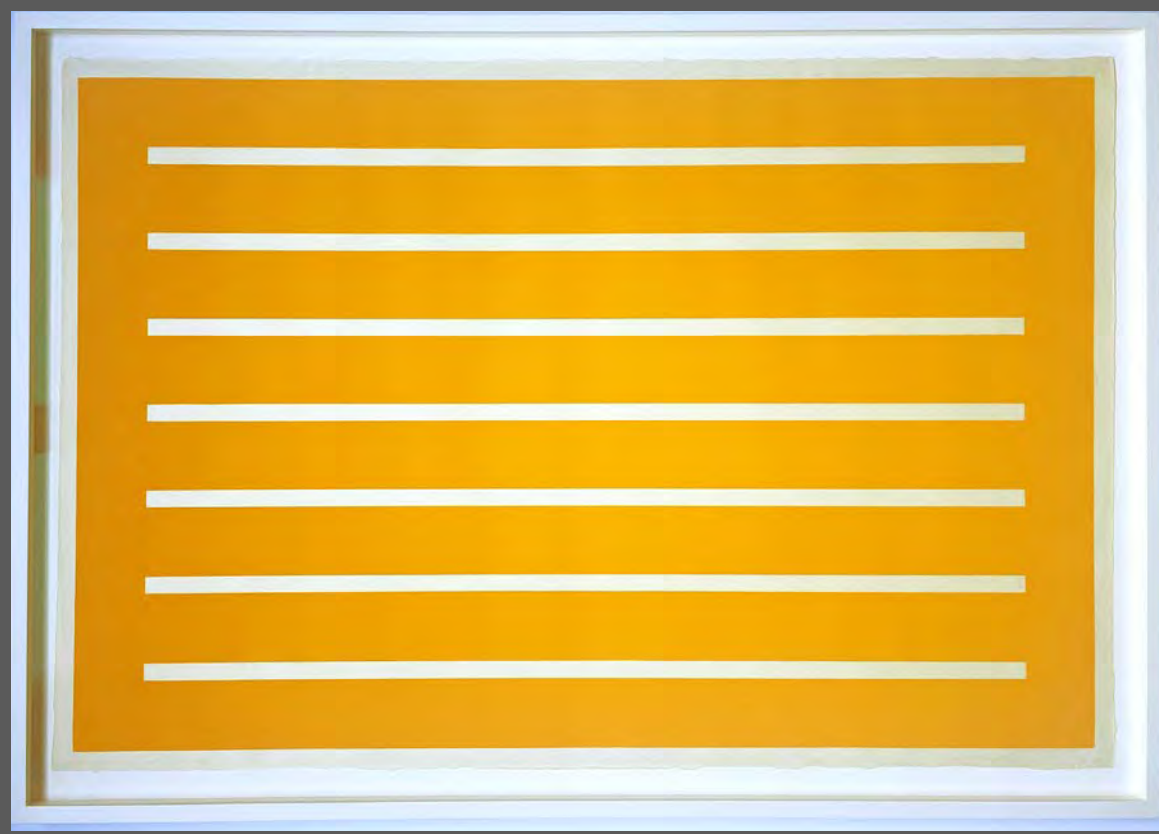
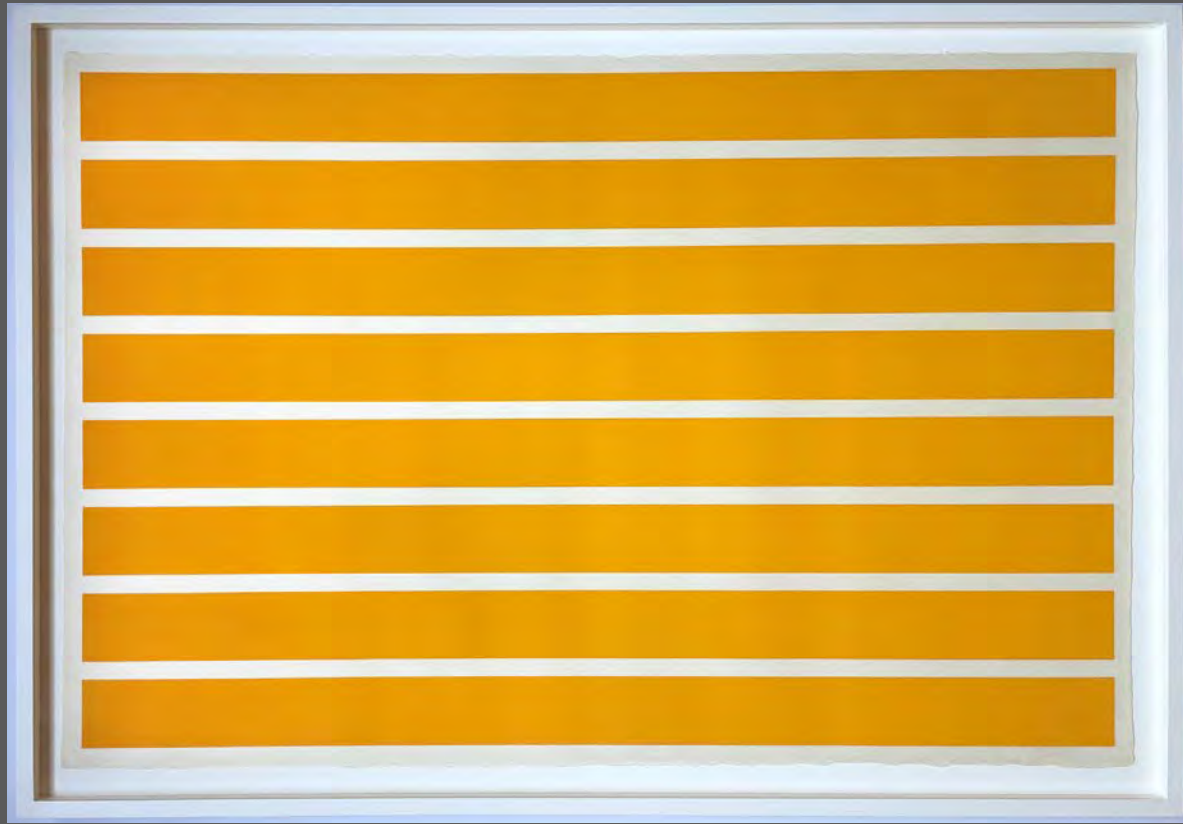
Edition of 25

Estate stamped as issued

JUD-0065

\$160,000

Please Inquire



DONALD JUDD

Untitled (#235-238), 1991/1994

Suite of four woodcuts printed in
Cadmium Yellow Medium on Japanese
laid paper Mitsumata

Each 26 1/4 x 38 1/2 in (67 x 99 cm)

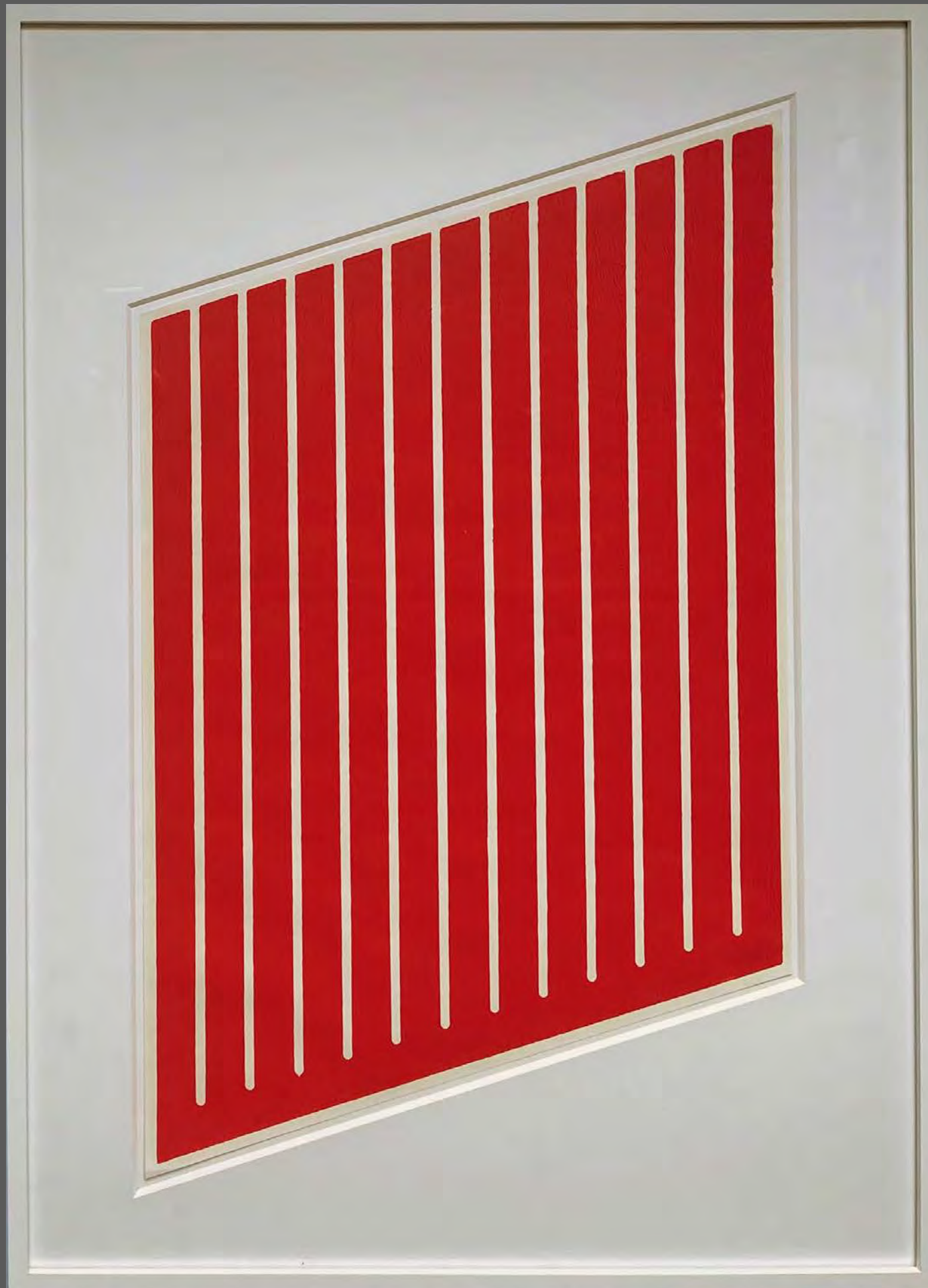
Each numbered and foundation
stamped verso

Edition of 15

JUD-0005

\$125,000

Please Inquire



DONALD JUDD

Untitled (4L), 1961 1968/69

Woodcut printed in cadmium red on cartridge paper

Sheet: 21 5/8 by 16 5/8 in. (54.9 by 42 cm.)

Signed, dated, numbered verso

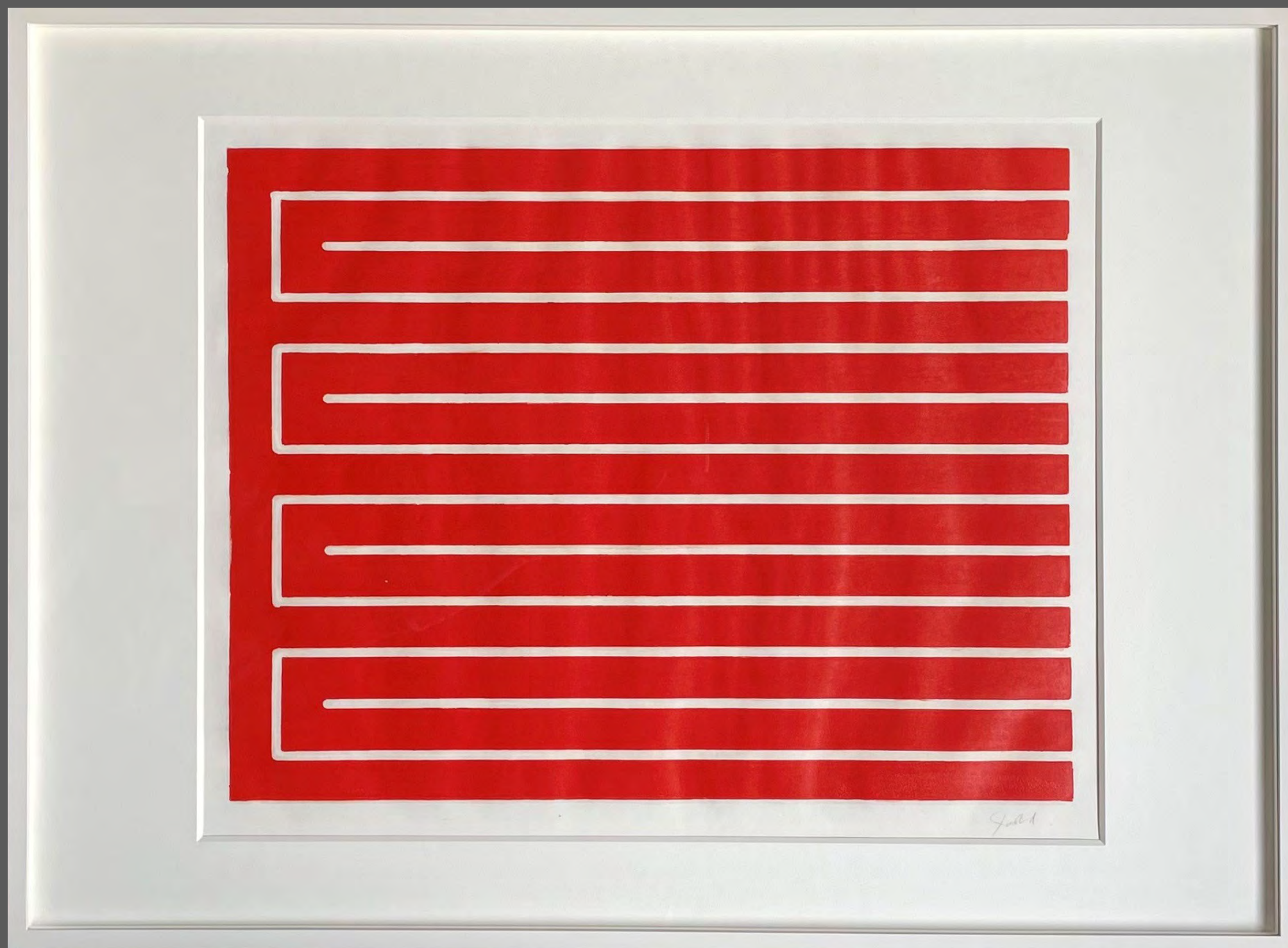
Edition of 10

Schellmann #44

JUD-0054

\$45,000

Please Inquire



DONALD JUDD

Untitled (#32), 1961-75

Woodcut in cadmium red on offset paper
21 ½ x 29 ¾ in. (54.6 x 75.6 cm)

Signed, dated, numbered recto; also signed Roy C Judd verso
Edition of 25
JUD-0063

\$45,000

Please Inquire

DONALD JUDD

Untitled (#M13), 1986

Folded aluminum and black plexiglas
27 7/8 × 28 1/8 × 3 1/16 in. (70.9 × 71.4 × 7.9 cm)

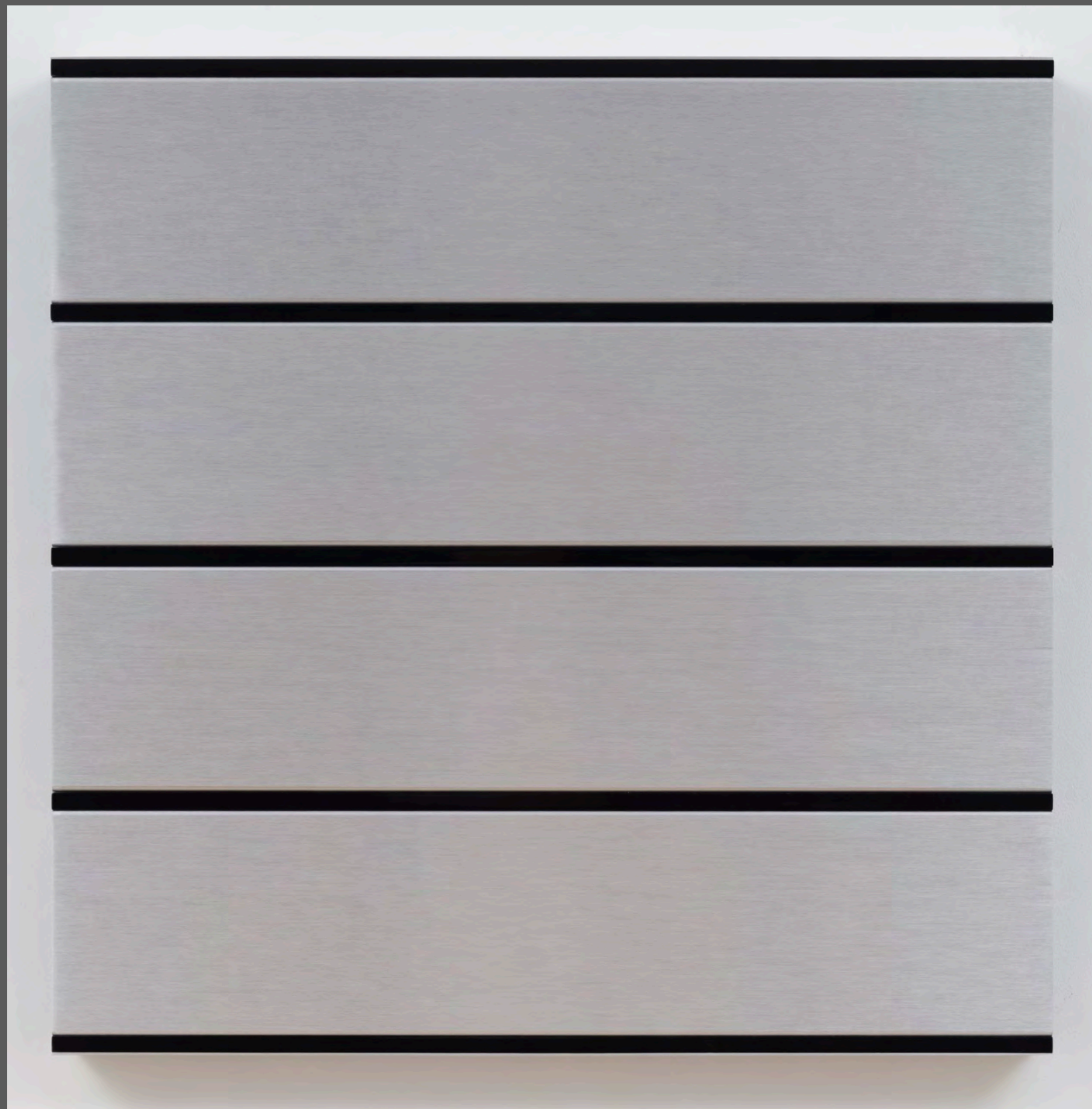
Edition of 40

Stamped and numbered on verso, upper left corner

JUD-0027

\$75,000

Please Inquire





MAURIZIO CATTELAN

Clown, 2024

Watercolor on Fabriano paper with collage of UV printed

Japanese paper, rubber stamped

16 ½ x 18 ½ in. (41.9 x 47 cm)

Frame: 24 ¾ x 22 x 3 ¼ in (62.9 x 55.9 x 8.3 cm)

One from a series of fifteen variants

Signed, dated, titled recto

Produced by Carolina Nitsch for the New Museum of

Contemporary Art, NY

CAT-0005

\$20,000

Please Inquire



LOUISE BOURGEOIS

Femme, 2007

Pencil on paper
9 1./2 x 8 in. (24.1 x 20.3 cm)
BOU-0419

\$70,000
Please inquire



LOUISE BOURGEOIS

The Family, 2007

Archival dyes on linen
17 ½ x 13 in. (44.4 x 33 cm)
Embroidered lower right LB, numbered verso
Edition of 9
Published by Carolina Nitsch
BOU-0213

\$85,000

Please inquire



LOUISE BOURGEOIS

Seated Woman, 2005

Diptych: etching, gouache, pencil, color pencil on paper, mounted on 2ply

12 3/4 x 24 3/4 in. (32.39 x 62.87 cm)

Series of 6 unique variations

BOU-0249

\$48,000

Please inquire



LOUISE BOURGEOIS

Give or Take (How do you feel this morning?), 1990

Bronze
4 1/2 x 9 x 6 in. (29.2 x 29.2)
Edition of 40
Incised
BOU-0195

\$45,000
Please Inquire

LOUISE BOURGEOIS

Paris Review, 1994

Aquatint and drypoint with white acrylic stencil additions
on Smooth, wove Somerset paper

Plate: 31 13/16 x 23 5/8" (80.8 x 60 cm)

Sheet: 36 13/16 x 28 1/16" (93.5 x 71.2 cm)

Signature: "Louise Bourgeois. 1994" lower right margin

Publisher: The Paris Review, New York

Edition: 35

MoMA Cat. No. 567/VIII

BOU-0359

\$30,000

Please Inquire



LOUISE BOURGEOIS

You are My Polar Star, 2009

Archival dyes on fabric with stitching in red thread
36 x 27 5/8 in. (91.4 x 70.2 cm)
Embroidered LB, numbered verso
Edition of 15
Published by Carolina Nitsch
BOU-0211

\$125,000

Please inquire





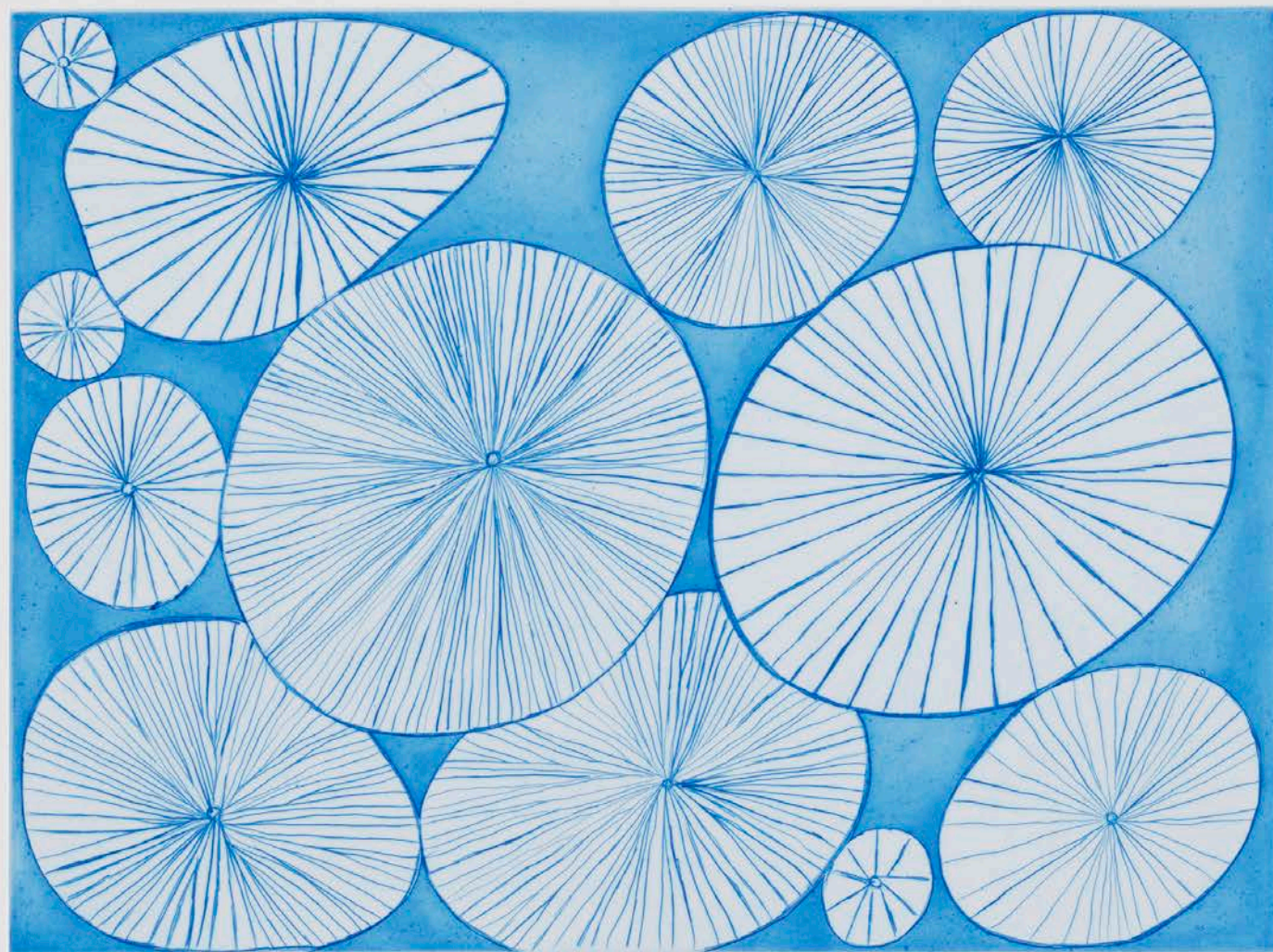
LOUISE BOURGEOIS

Untitled, 2004

Drypoint on cloth (round) with unhemmed edges
14 ¼ x 14 ½ in. (36.20 x 36.83 cm)
Embroidered LB, numbered verso
Edition of 25
BOU-0266

\$35,000

Please inquire



ap. 5/7

Louise Bourgeois 2004

LOUISE BOURGEOIS

Untitled No. 2, 2004

Color dry-point and open bite on paper
Signed and dated lower right, numbered lower left
15 x 17 in. (38.16 x 43.18 cm)
Edition of 25
BOU-0286

\$20,000
Please Inquire

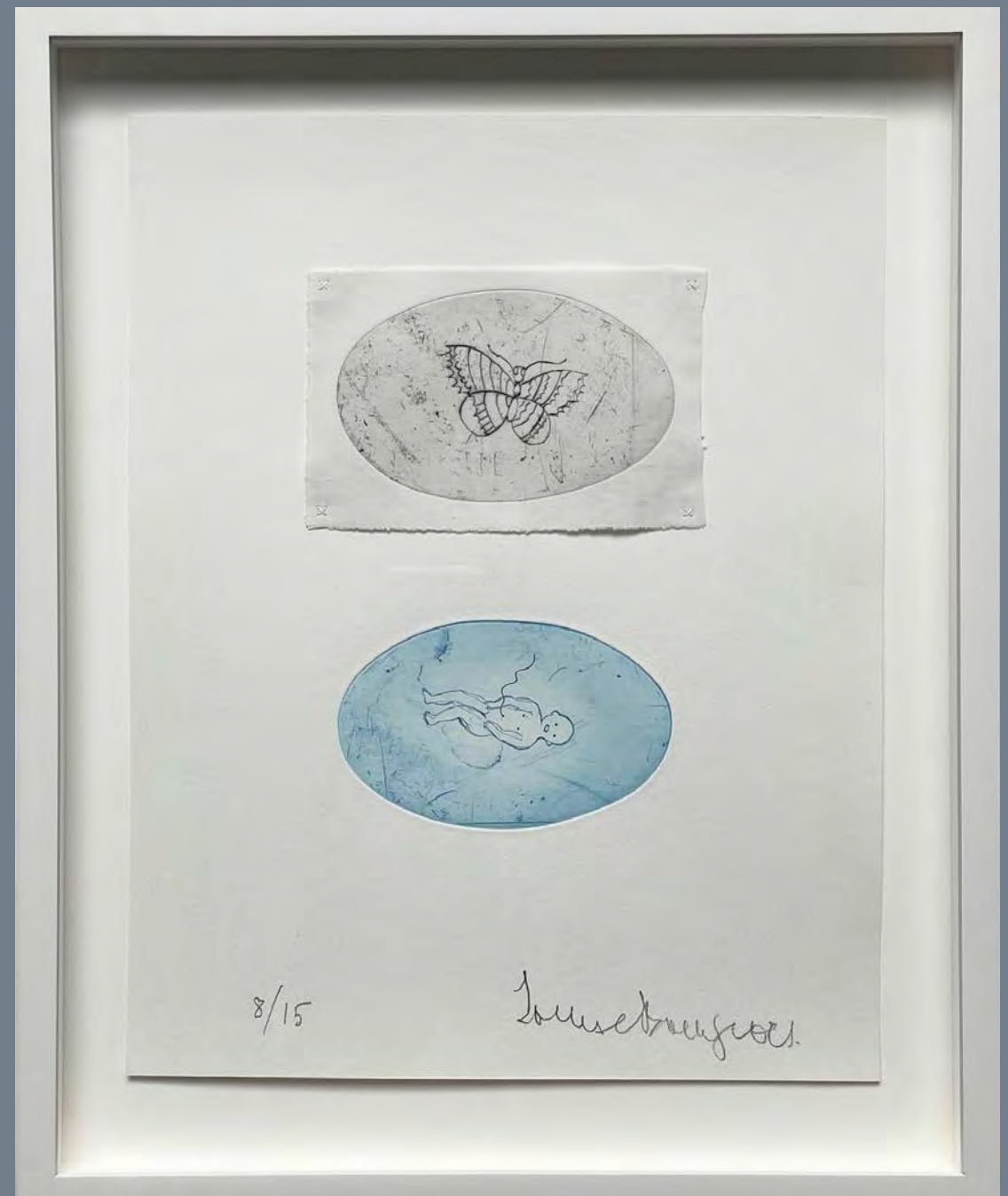


LOUISE BOURGEOIS

The Smile (cloth), 2001

Lithograph printed in red on cloth
LB lower right; numbered verso
11 ¾ x 9 ¾ in. (29.8 x 24.8 cm)
Edition of 40
BOU-0301

\$18,000
Please inquire



LOUISE BOURGEOIS

Baby and Butterfly, 2007

Engraving and dry point on vintage paper and collaged cloth
12 x 9 ½ in. (30.5 x 24.1 cm)
Signed and numbered
Edition of 15
BOU-0391

\$30,000
Please Inquire



LOUISE BOURGEOIS

Spirales, 1974/1990

Etching on smooth, wove Arches paper
Plate size: 4 15/16 x 6 3/4 in. (12.5 x 17.2 cm);
Sheet size: 9 15/16 x 12 15/16 in. (25 x 33 cm)
Signed and numbered recto
Edition of 50
BOU-0401

\$15,000

[Please Inquire](#)



LOUISE BOURGEOIS

Reparation, 1991

Printed and hand colored paper, hand torn,
pierced, and sewn with thread on smooth,
wove Lana Gravure and Arches paper
10 x 8 1/4 in. (25.4 x 21 cm)
Signed and numbered in pencil
Edition of 75
BOU-0336

\$3,500

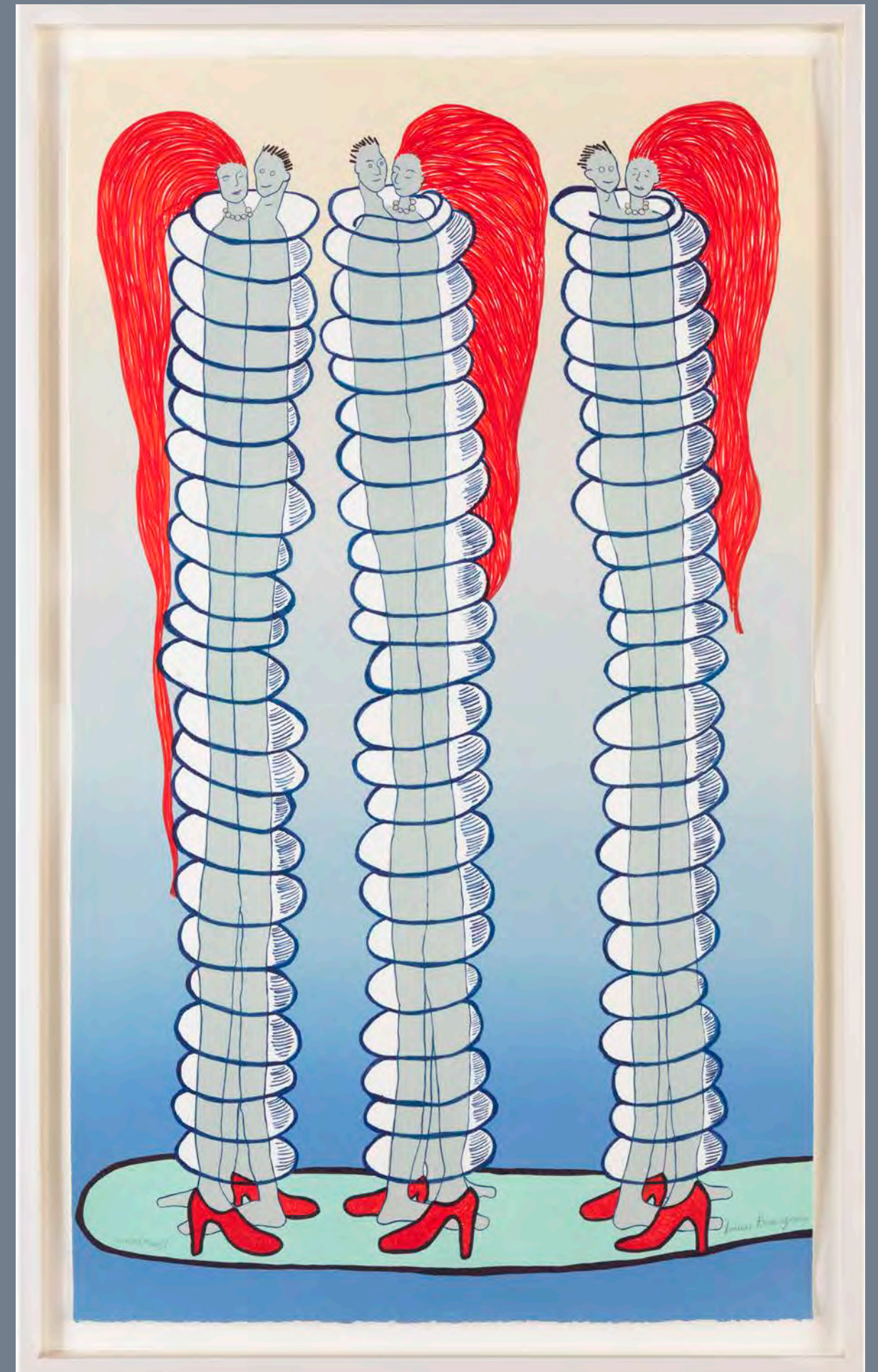
[Please Inquire](#)

LOUISE BOURGEOIS

Couples, 2001

Color lithograph on Arches paper
44 x 26 in. (112 x 66 cm)
Initialed, numbered, dated
Edition of 100
BOU-0002

\$18,000
Please inquire





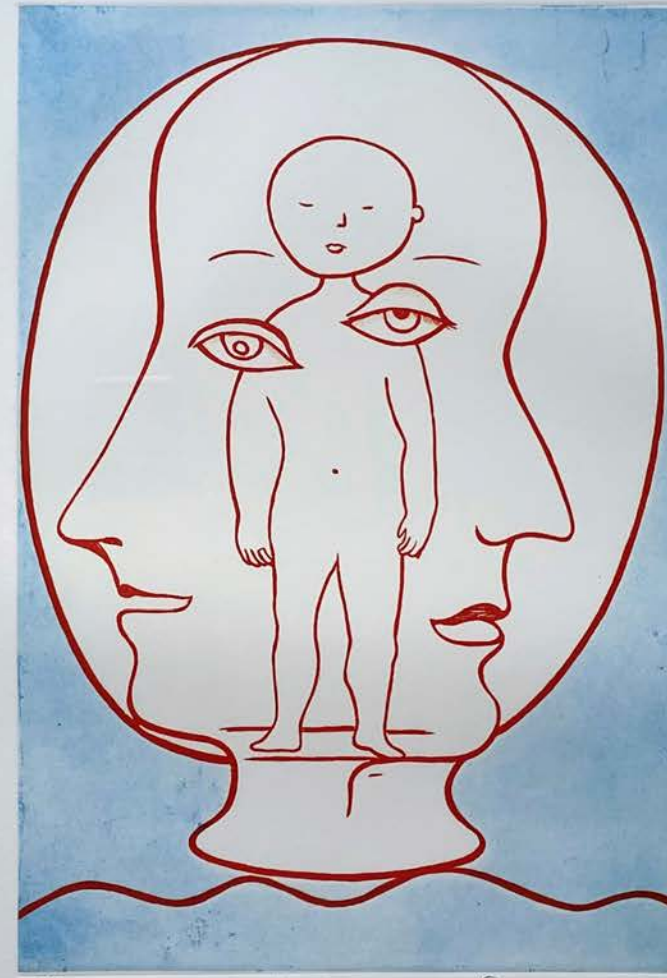
LOUISE BOURGEOIS

The Bad Girl, 2008

Suite of five screen prints on linen
Each: 16 x 12 in. (40.6 x 30.5 cm)
Each embroidered LB, numbered verso
Edition of 12
Published by Carolina Nitsch
BOU-0181

\$75,000

Please Inquire



2/60

Self-Portrait

Louise Bourgeois

LOUISE BOURGEOIS

Self-Portrait 1990-1994

Dry point, etching and aquatint on paper
27 x 19 ½ in. (68.5 x 49.5 cm)

Signed, numbered and dated in pencil

Edition of 60

BOU-0206

\$18,000

Please Inquire

LOUISE BOURGEOIS

Reply to Stanley Hayter, 1996

Lithograph on paper
27 3/16 x 30 in. (69 x 76.2 cm)

Initialed and numbered

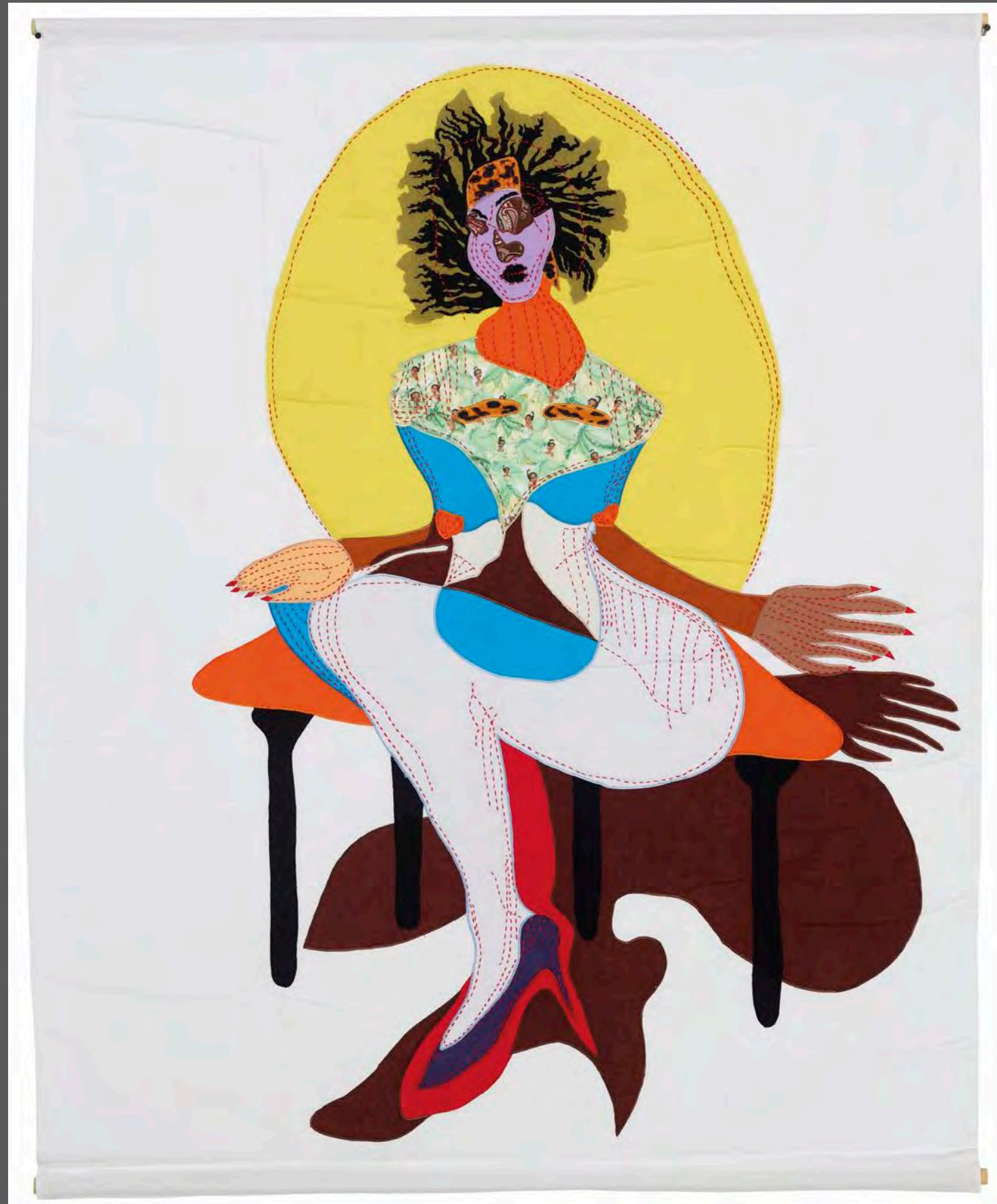
Edition of 70

BOU-0417

\$10,000

Please Inquire





TSCHABALALA SELF

Princess, 2018

Hand-sewn cotton and tulle tapestry, dowel rods
50 ³/₄ x 39 ⁵/₈ in. (128.9 x 100.7 cm)
Frame: 52 ¹/₂ x 42 ¹/₂ x 2 ¹/₂ in (133.4 x 108 x 6.4 cm)
Edition of 30
Signed, numbered, dated verso
SEL-0001

\$40,000

Please Inquire

GIORGIO MORANDI

Natura Morta, 1933

Etching on Chine collé to wove paper

Image: 9 ¼ x 9 in. (23.6 x 23 cm.)

Sheet: 13 ½ x 21 3/8 in. (34.3 x 54.3 cm.)

Frame: 22 ¼ x 20 ½ in. (56.5 x 52 cm.)

Signed, dated, numbered in pencil Inscribed:

'Al signor Luigi Mayno... Giorgio Morandi 15/21 Morandi

1933' in pencil

Executed in 1933. Printed circa 1939-49. Vitali's first state
(of two).

Published by Calcografia Nazionale, Rome.

Edition of 21

MDI-0001

\$35,000

Please Inquire





THOMAS SCHUTTE

United Enemies, 1997

Cast bronze, copper wire
11 7/8 x 3 1/4 x 3 1/4 in. (30 x 8 x 8cm)
Edition of 12

\$150,000
Please Inquire



THOMAS SCHUTTE

Two Tulips, 1992

Watercolor on paper
12 ½ x 9 3/8 in. (32 x 24 cm)
Signed, dated, titled, dedicated verso
SCT-0083

\$25,000
Please Inquire



TRACEY EMIN

Moving Fast Away (Pink), 2015

Monotype diptych on Somerset paper
41 ½ x 55 in. (105.4 x 139.7cm)

Signed, dated, titled
EMI-0079

\$45,000

Please Inquire



ALYSON SHOTZ

Topographic Cyanotype, 2024

Cyanotype on Mulberry paper, crumpled by hand

Signed and dated verso

Each 37 7/8 x 54 3/8 in (96.2 x 138.1 cm)

Frame: 42 1/2 x 59 5/8 in (108 x 128.6 cm)

Unique

SHO-0204

\$10,000

Please Inquire



ALYSON SHOTZ

Topographic Iteration A, 2014

Pigment print on Masa Japanese paper
Each crumpled by hand
7 ½ x 10 in. (19.1 x 25.4 cm)
Signed, dated, numbered
Edition of 6 variants
SHO-0138

\$2,500

Please Inquire



ALYSON SHOTZ

Topographic Iteration C, 2014

Pigment print on Masa Japanese paper
Each crumpled by hand
7 ½ x 10 in. (19.1 x 25.4 cm)
Signed, dated, numbered
Edition of 6 variants
SHO-0140

\$2,500

Please Inquire



ADAM PENDLETON

Anthology, 2018

Hand sewn book, each with a unique canvas cover
200 screen printed pages on Japanese Shoji paper
18.25 x 14 x 2.5 in. (46.3 x 34.5 x 6.3 cm)

Signed, numbered, and dated on inside back cover

Edition of 24

PEN-0001

\$20,000

Please Inquire

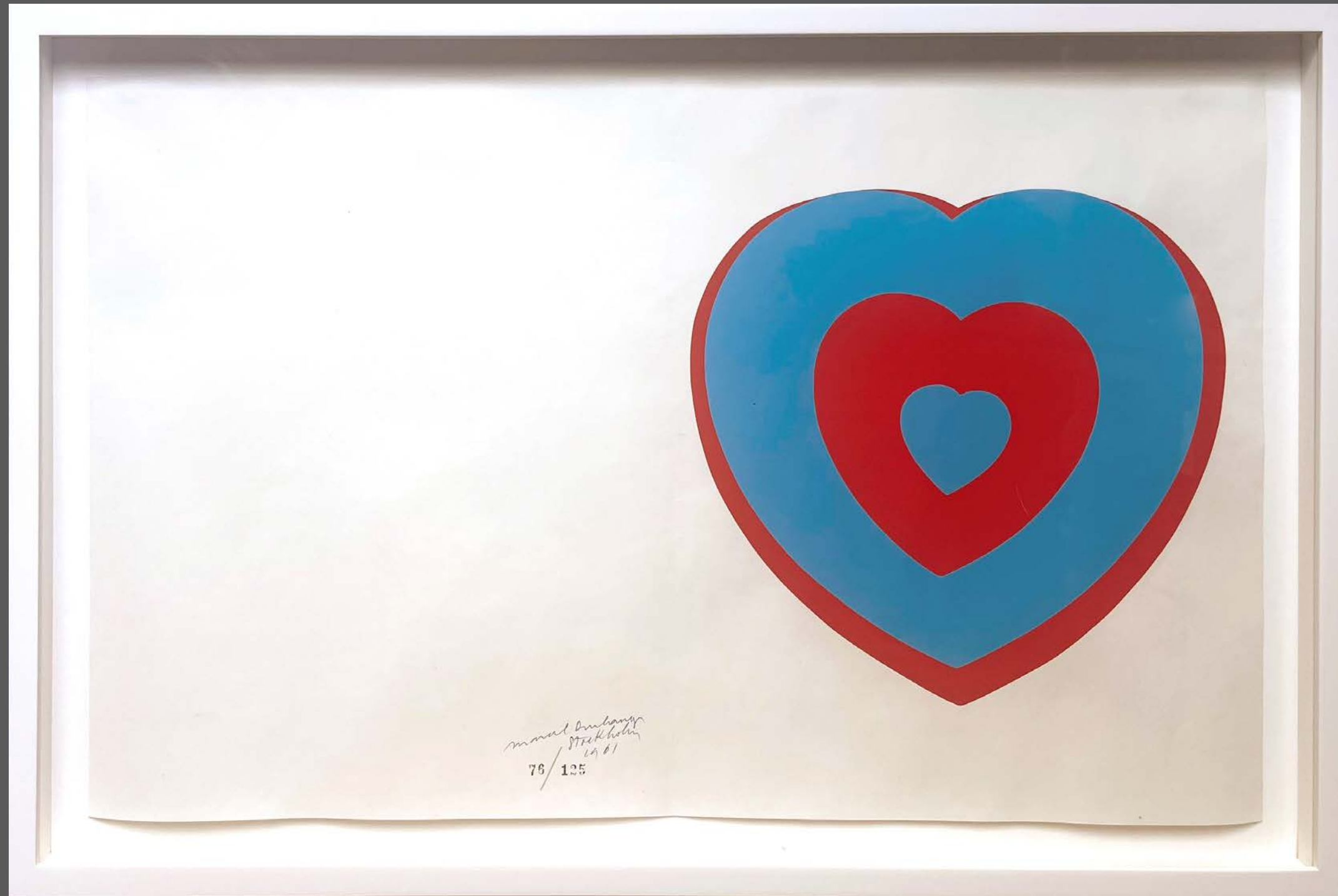


LAWRENCE WEINER

Learn to Read Art, 2019

Color screenprint on cloth napkin
18 x 18 in. (45.7 x 45.7 cm)
Signed and numbered recto
Edition of 25
WEN-0006

\$1,000
Please Inquire



MARCEL DUCHAMP

Coeurs Volant (Fluttering Hearts), 1961

Color screenprint on paper
12¾ × 20 in. (32 × 51 cm)
Signed, dated, inscribed 'Stockholm',
stamp numbered as issued
Edition of 125
DUC-0002

\$30,000
Please Inquire



E.V. DAY

Mummified Barbie, 2024

Bronze
Patinas variable
12 x 3 x 2.5 inches (30.5 x 7.6 x 6.3 cm)
Incised verso
Edition of 5 variants
DAY-0130

\$7,500
Please Inquire



ANDY WARHOL

Photo Edition for Parkett, 1987

Black and white photograph machine-sewn
9 3/4 x 7 3/4 in. (24.8 x 19.7 cm)
Frame: 13 5/8 x 11 1/2 x 1 1/2 in. (34.6 x 29.2 x 3.9 cm)
Edition of 120
Signed and numbered verso
WAR-0002

\$16,000
Please Inquire



ELLSWORTH KELLY

Red Curve, 1999

Single color lithograph
10 x 7 1/2 in. (25.4 x 19.1 cm)
Frame: 13 3/4 x 11 1/4 x 1 5/8 in. (35 x 28.6 x 4.1 cm)
Edition of 70
Signed and numbered recto
KEL-0017

\$12,000
Please Inquire

DAVID HAMMONS

Money Tree, 1992

Sepia-print photograph

16 ½ x 11 in. (41.9 x 27.9 cm)

Frame: 23 ⅛ x 17 ½ x 1 in (58.7 x 44.5 x 2.5 cm)

Edition of 70

Signed and numbered verso

HMM-0001

\$8,000

Please Inquire





GARY HUME

Snowman, 1996

Silkscreen on pink felt
12 x 12 in. (30.5 x 30.5 cm)
Frame: 17 ¼ x 17 x 1 ½ in (43.8 x 43.2 x 3.8 cm)
Edition of 50
Signed, numbered, titled,
dated recto
HUM-0001

\$3,500
Please Inquire



BEATRIZ MILHAZES

Batucada, 2009

18-color screenprint with foil stamping on
Arches 88 paper 300g/m
13 3/8 x 11 ¾ in. (34 x 29.8 cm)
Frame: 19 ¼ x 17 3/8 x 1 ½ in (48.9 x 44.1 3.8 cm)
Edition of 45
Signed and numbered verso
MIL-0004

\$5,000
Please Inquire



MAURIZIO CATTELAN

Untitled, 2017

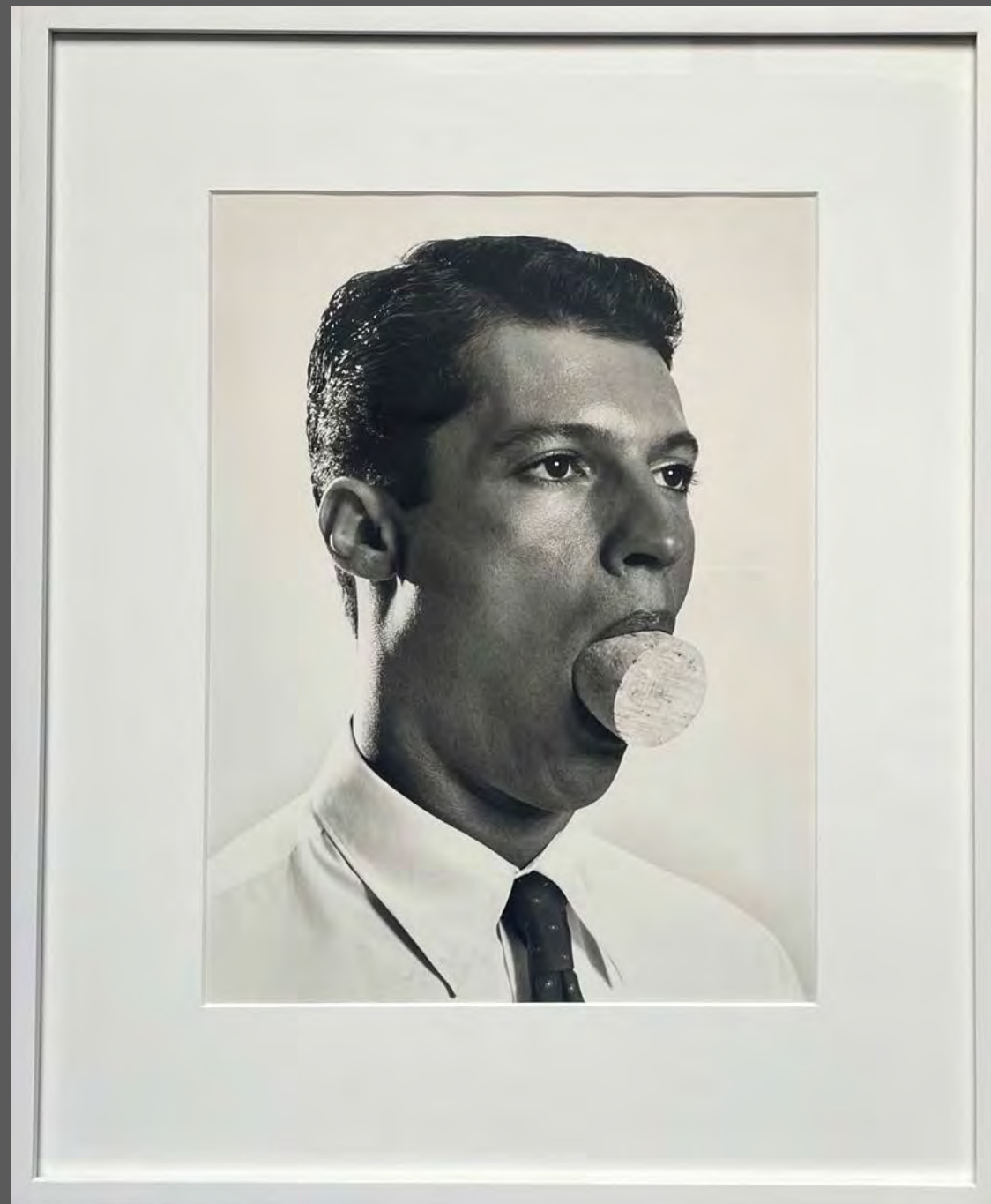
10-color screenprint on Velin D'Arches noir 250 g/m
19 5/8 x 19 5/8 in (50 x 50 cm)

Edition of 35

Signed and numbered certificate
CAT-0004

\$4,500

Please inquire

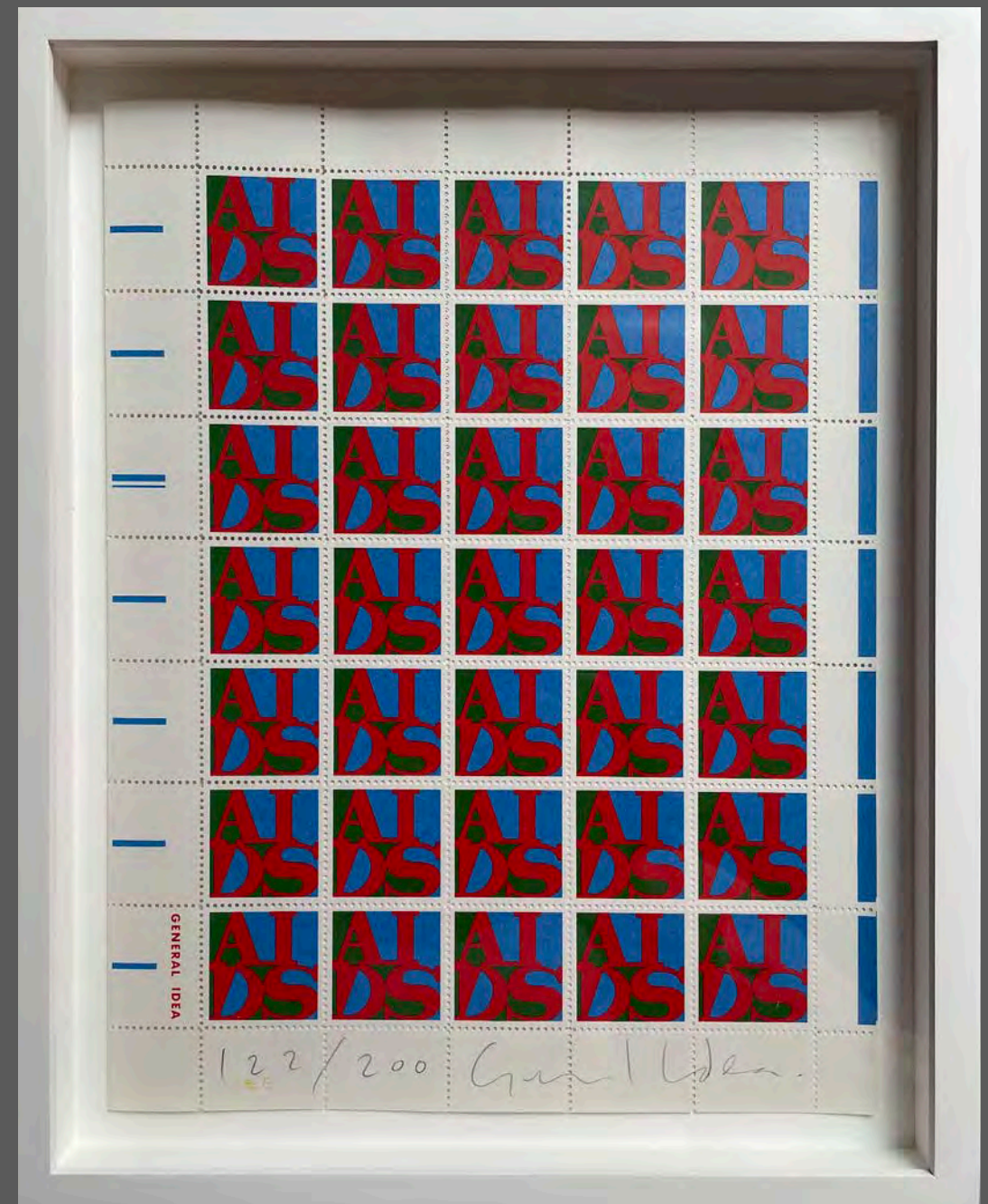


MAURIZIO CATTELAN

Untitled, 2000

Black and white photograph printed digitally on
Usò Mano paper
16 ¼ x 13 in. (41.3 x 33 cm)
Frame: 18 ¼ x 15 x 1 in (46.4 x 38.1 x 2.5 cm)
Edition of 60
Signed and numbered certificate
CAT-0001

\$2,500
Please Inquire

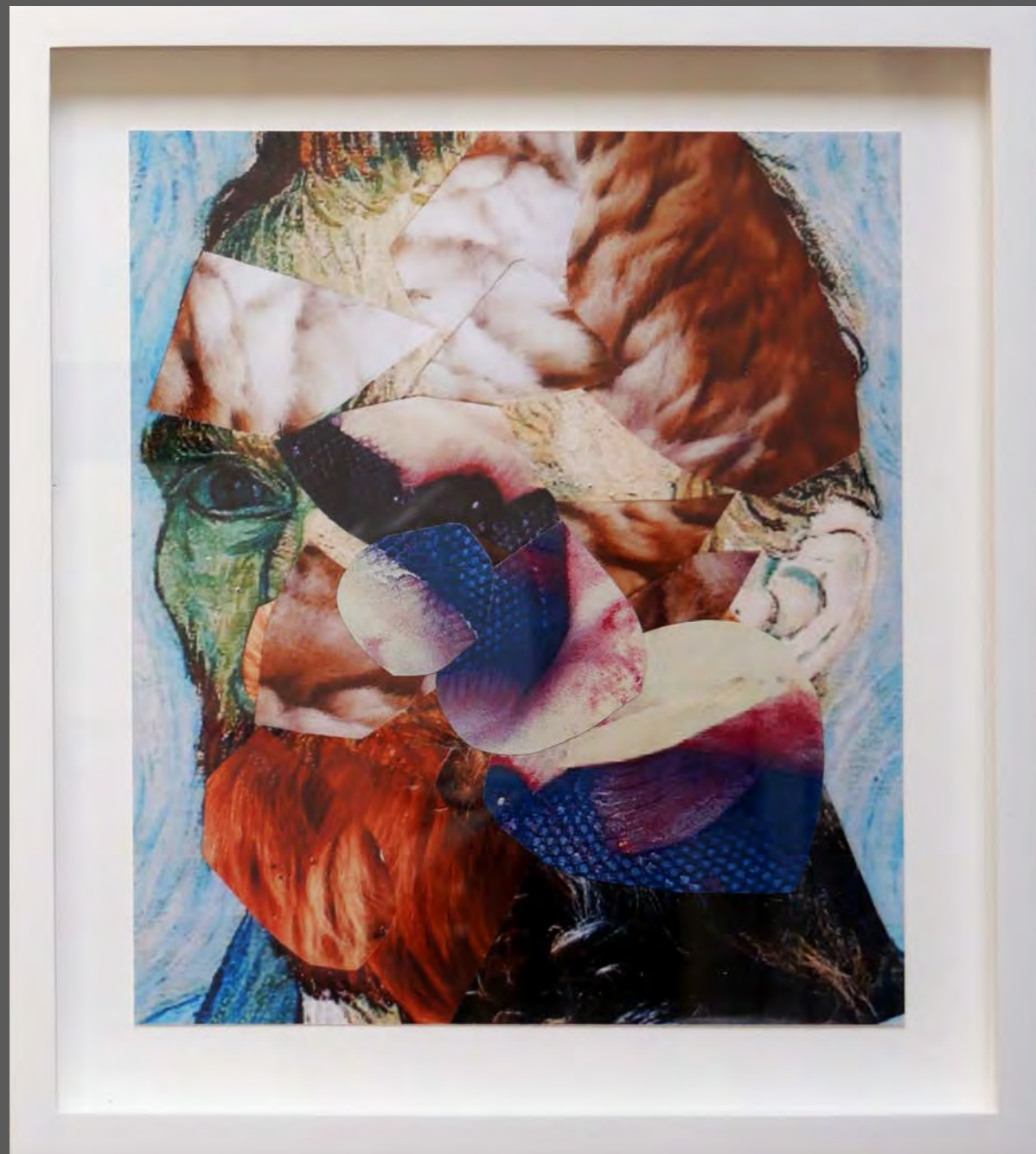


GENERAL IDEA

AIDS (Stamps), 1988

Color offset lithograph on perforated paper, printed on both
sides; the full sheet unfolded
11 x 16 ¾ in. (27.9 x 42.5 cm)
Frame: 12 ¾ x 10 x 1 ½ in (32.4 x 25.4 x 3.8 cm) (folded)
Edition of 200
Signed and numbered recto
GDE-0001

\$900
Please Inquire



ADRIAN GHENIE

The Lidless Eye, 2016/17

Unique collaged paper print
9 7/8 x 8 1/2 in. (25.1 x 21.6 cm)
Frame: 11 3/4 x 10 5/8 x 1 1/2 in (29.8 x 27 x 3.8 cm)
One from a series of 25 unique collages
Signed and numbered verso
GHE-0001

\$35,000
Please Inquire



ADRIAN GHENIE

The Lidless Eye, 2016/17

Unique collaged paper print
9 7/8 x 8 1/2 in. (25.1 x 21.6 cm)
Frame: 11 3/4 x 10 5/8 x 1 1/2 in (29.8 x 27 x 3.8 cm)
One from a series of 25 unique collages
Signed and numbered verso
GHE-0001

\$35,000
Please Inquire

CINDY SHERMAN

Untitled (Clown), 2006

Chromogenic crystal archive print on Fujicolor
40 x 30 in. (101.6 x 76.2 cm)

Frame: 42 1/8 x 31 7/8 x 1 1/2 in (107 x 81 x 3.8 cm)

Edition of 25

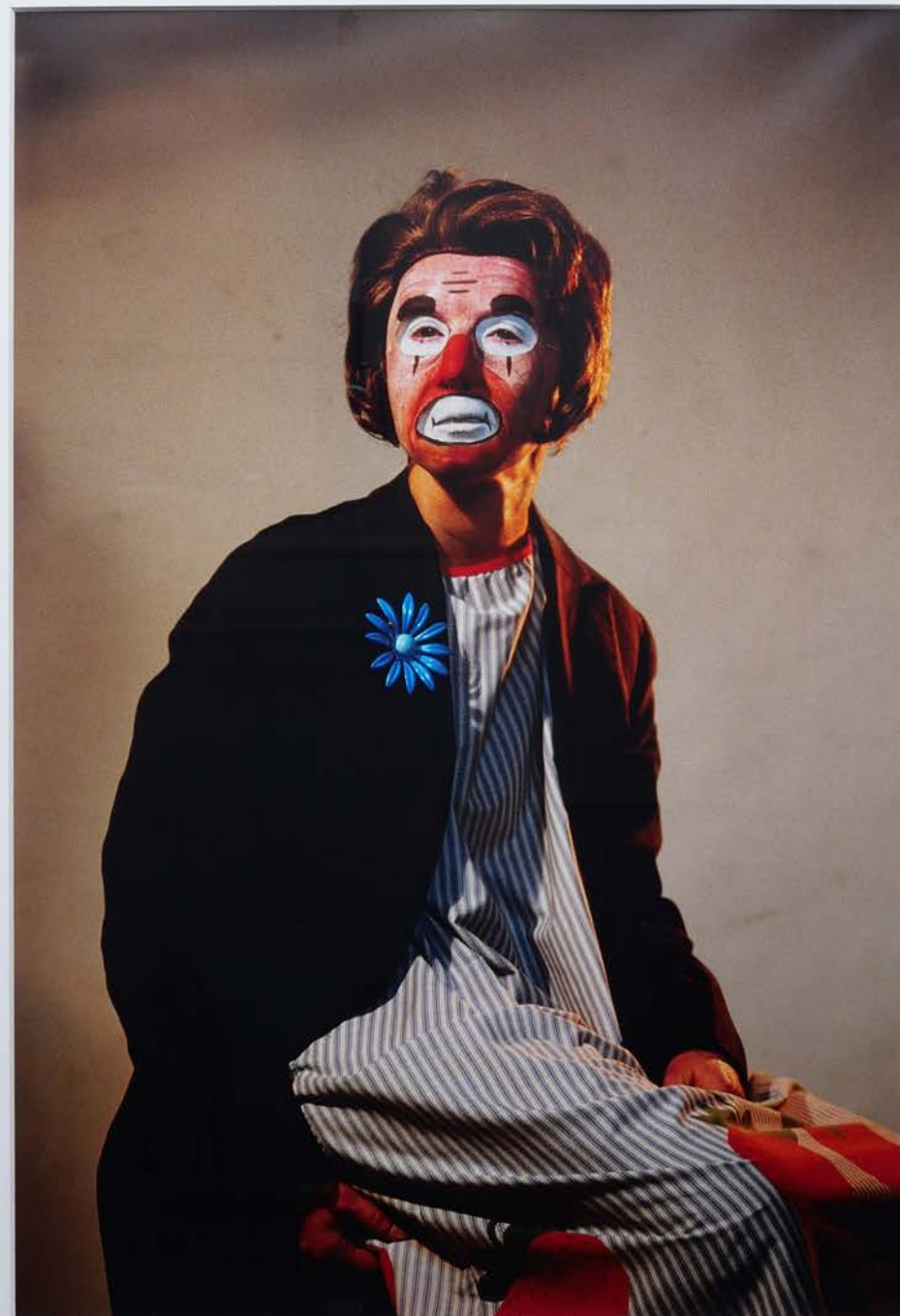
Signed, numbered verso

Published by Carolina Nitsch

SHE-0004

\$45,000

Please Inquire





CINDY SHERMAN

Untitled (Homage to Claude Cahun), 1975/2004

Gelatin silver print on Kodak C-print paper
10 x 8 in. (25.4 x 20.3 cm)
Frame: 13 ¼ x 10 3/8 x 1 ½ in (33.6 x 26.4 x 3.8 cm)
Edition of 225
Signed, dated, numbered verso
SHE-0009

\$10,000
Please Inquire



CINDY SHERMAN

Untitled (LSG), 2010

Chromogenic crystal archive print
on Kodak Matte paper
11 x 14 in. (27.9 x 35.6 cm)
Signed, numbered, dated verso
Edition of 100
Published by Carolina Nitsch
SHE-00079

\$5,000
Please Inquire



GABRIEL OROZCO

Light through Leaves, 1996

(Parkett 48)
Iris computer print, archival water-
based ink on Somerset Satin paper
22 x 32 1/8 in. (55.9 x 81.6 cm)
Signed and numbered
Edition of 60
ORO-0003

\$9,000

Please Inquire



SOL LEWITT

Untitled, 1999

Gouache on board
9 ½ x 9 ½ in. (24.1 x 24.1 cm)

Signed and dated

Unique

LEW-0024

\$24,000

Please Inquire



BRICE MARDEN

Etching for Parkett, 1986

Sugar lift and aquatint on Rives BVK,
10 x 8 ¼ in. (25.5 x 21 cm)

Signed and numbered

Edition of 100

MRD-0001

\$5,000

Please Inquire



WILLIAM WEGMAN

Game, 2000

Iris print
21 x 17 ½ inches (53.34 x 44.45 cm)
Signed, titled and numbered recto
Edition of 150
WEG-0002

\$1,500
Please Inquire



JAMES ROSENQUIST

Drifter: Speed of Light, 2000

9-color lithograph on Somerset soft white paper
17 ¼ x 14 5/8 in. (43.8 x 37.1 cm)
Signed and numbered
Edition of 60
ROS-0002

\$5,000
Please Inquire

MARILYN MINTER

Pamela Anderson,, 2007

C-print
20 ½ x 16 in. (52.1 x 40.6 cm)
Signed and numbered
Edition of 60
MIN-0009

\$5,000
Please Inquire





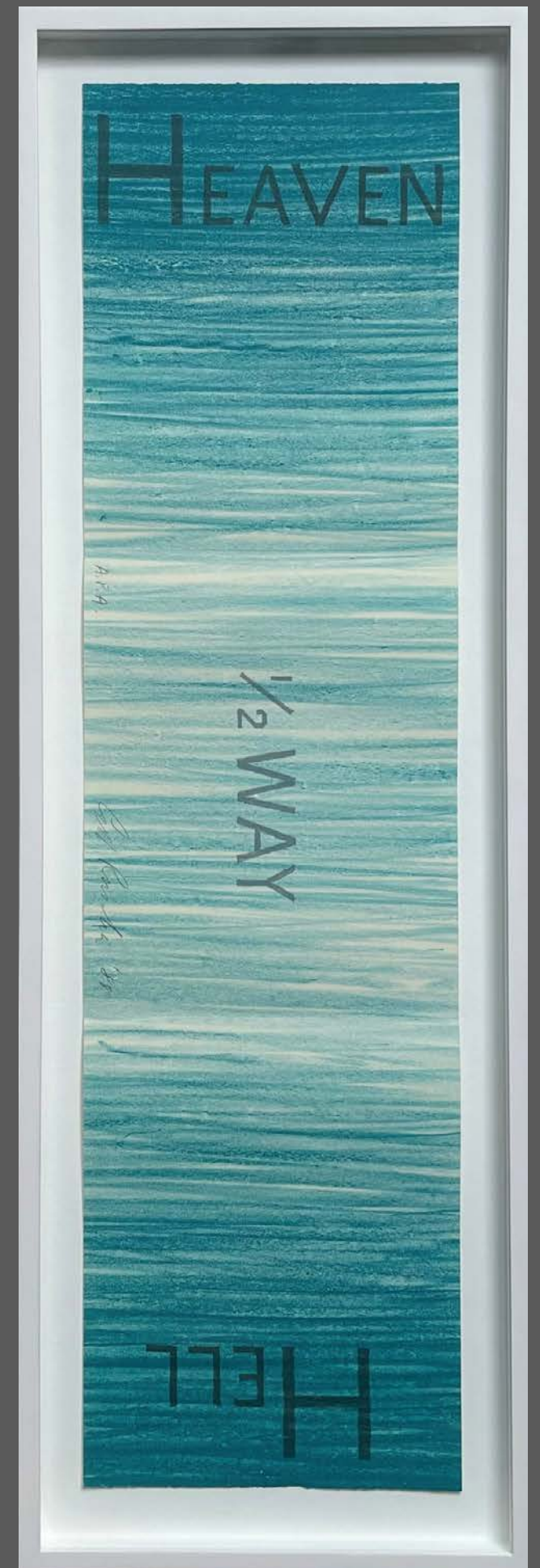
MICKALENE THOMAS

Screen Test, 2024

Screenprint in black enamel ink with silver glitter hand additions
16 x 16 in. (40.6 x 40.6 cm)
Edition of 55
Signed, dated, and numbered recto
THO-0003

\$5,000

Please Inquire



ED RUSCHA

Hell 1/2 Way Heaven, 1988

Lithograph on Rives, bound in the magazine
29 3/4 x 8 in. (75.6 x 20.3 cm)
Frame: 32 3/8 x 10 5/8 x 1 1/2 in (82.2 x 27 x 3.8 cm)
Edition of 100
Signed and numbered recto
RUS-0014

\$15,000

Please Inquire



LAURA OWENS

Untitled, 2002

Hand printed 10-color lithograph on tan BFK Rives with three collage elements, one hand painted with water-color on Magnani Pescia, two on white BFK Rives; color of the moon varying 1

8 x 12 in. (45.7 x 30.5 cm)

Edition of 70

Signed and numbered verso

OWE-0007

\$7,500

Please Inquire

CAROLINA NITSCH

101 Wooster Street New York 10012
info@carolinanitsch.com
+1 (212) 463-0610
www.carolinanitsch.com