

**Josef Albers** (1888 - 1976)

*Study for Homage to the Square*, 1969

Oil on masonite

16 by 15 3/4 inches (40.6 x 40 cm)



[Fact Sheet & Essay](#)



**Jean-Michel Basquiat** (1960 - 1988)

*Cash Crop*, 1984

Acrylic and oilstick on canvas

72 by 96 inches (182.9 x 243.8 cm)



Fact Sheet & Essay



**Alighiero Boetti** (1940 - 1994)

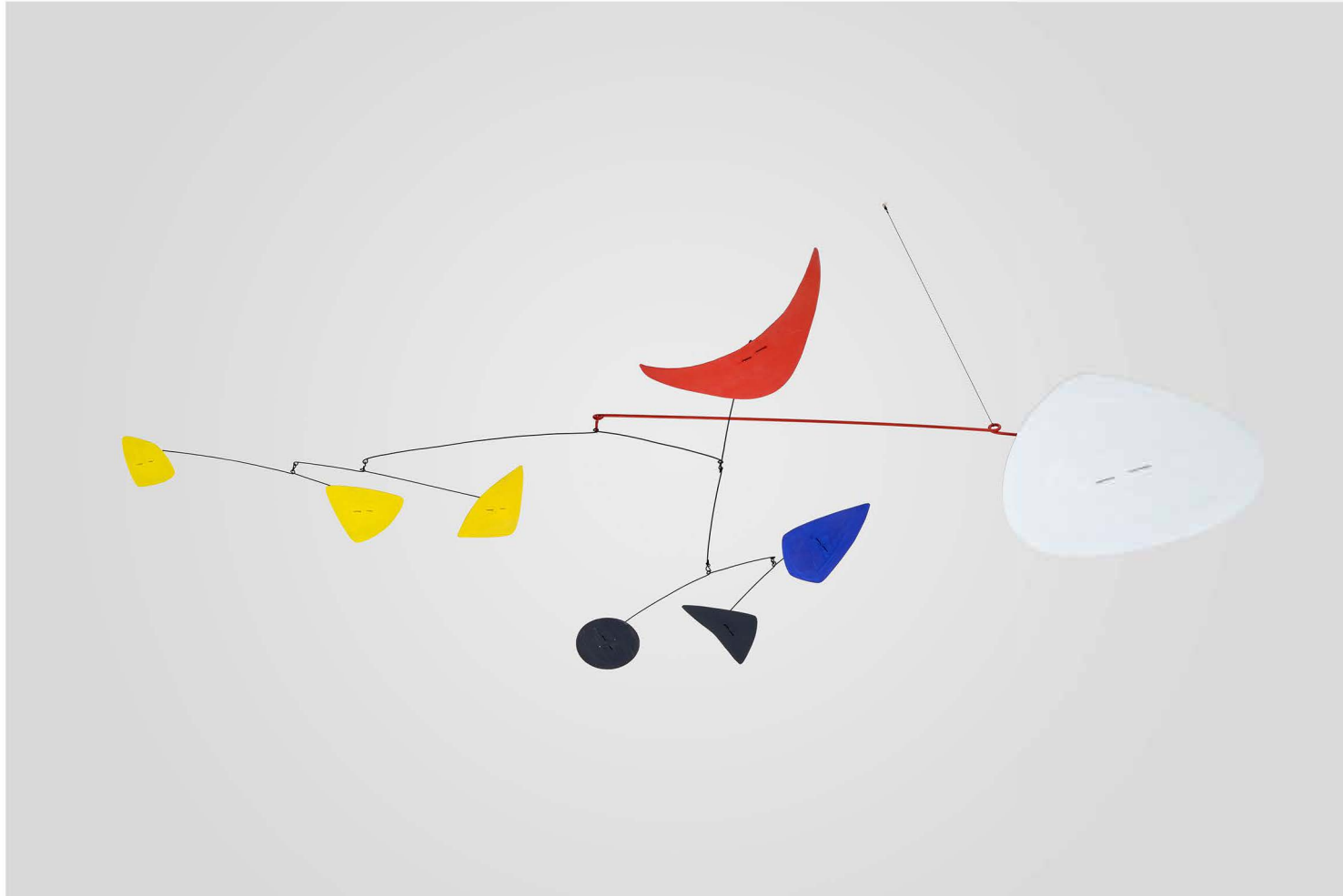
*Tutto*, 1989

Embroidery

26 by 39 3/8 inches (66 x 100 cm)



Fact Sheet & Essay



**Alexander Calder** (1898 -1976)

*The Red Crescent*, 1969

Sheet metal, rod, wire, and paint

23 1/2 by 88 1/2 by 26 inches (60 x 225 x 66 cm)



Fact Sheet & Essay



**George Condo** (b. 1957)

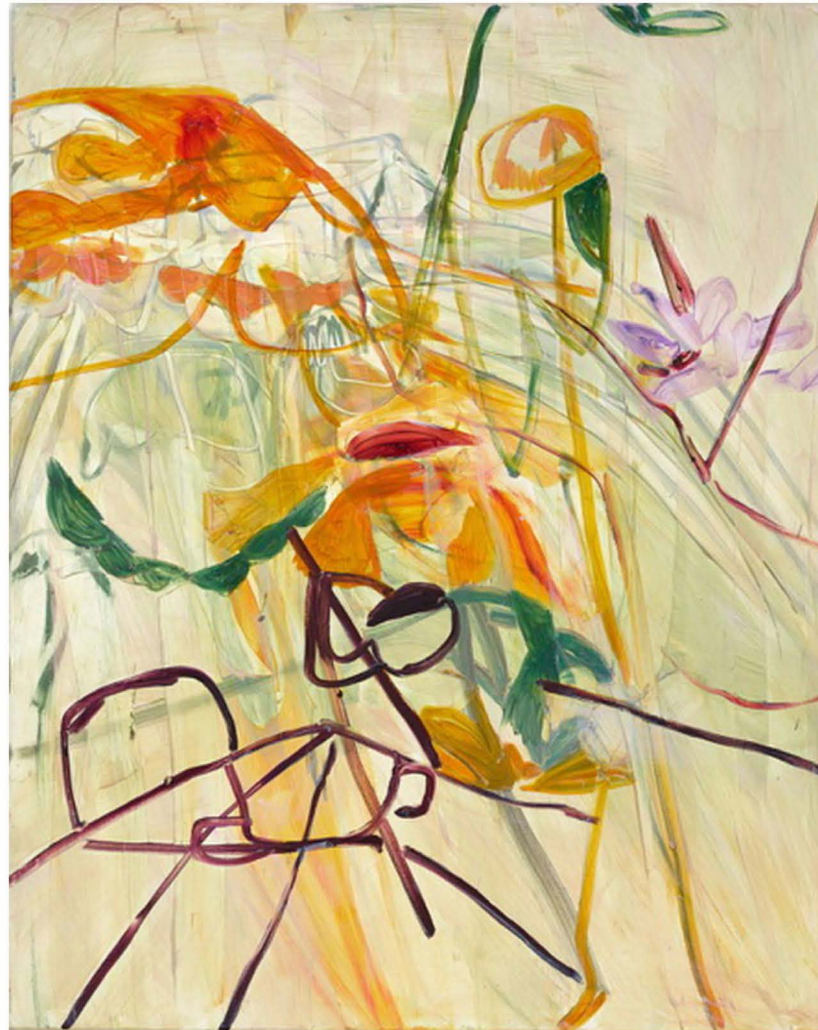
*Reclining Nude*, 2015

Oil and pigment stick on linen

80 by 76 inches (203.2 x 193 cm)



[Fact Sheet & Essay](#)



**Jadé Fadojutimi** (b. 1993)

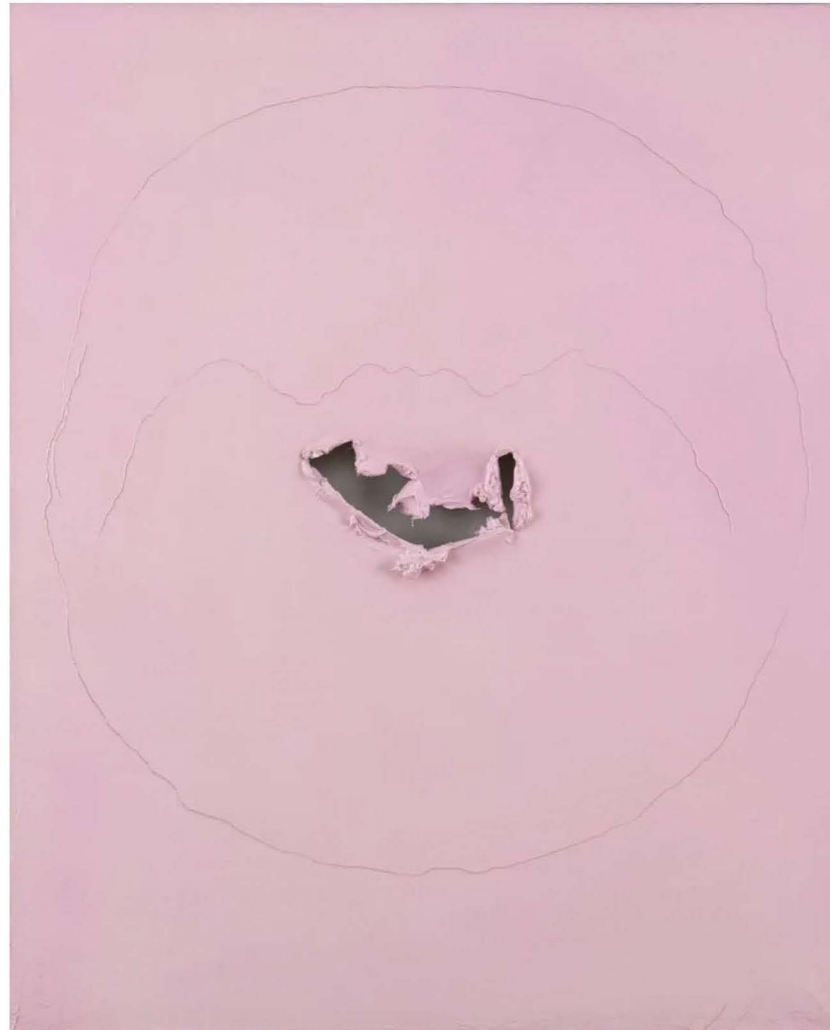
*Fleetingly Fresh*, 2018

Oil on canvas

59 1/2 by 47 1/4 inches (151 x 120 cm)



Fact Sheet & Essay



**Lucio Fontana** (1888 - 1976)

*Concetto Spaziale*, 1962

Graffiti on pink canvas

39 by 31 1/2 inches (100 x 80 cm)



[Fact Sheet & Essay](#)



**Alex Katz** (b. 1927)

*Orange and Black*, 2006

Oil on canvas

72 by 96 inches (183 x 244 cm)



[Fact Sheet & Essay](#)





**Willem de Kooning** (b. 1904 - 1997)

*Cross-Legged Figure*, 1972

Cast bronze

24 by 17 by 16 inches (61 x 43.2 x 40.6 cm)



[Fact Sheet & Essay](#)



**Willem de Kooning** (1904 - 1997)

*East Hampton XXII*, 1968

Oil on paper mounted on canvas

22 1/2 by 18 inches (57.2 x 45.7 cm)



[Fact Sheet & Essay](#)



**Willem de Kooning** (1904 - 1997)

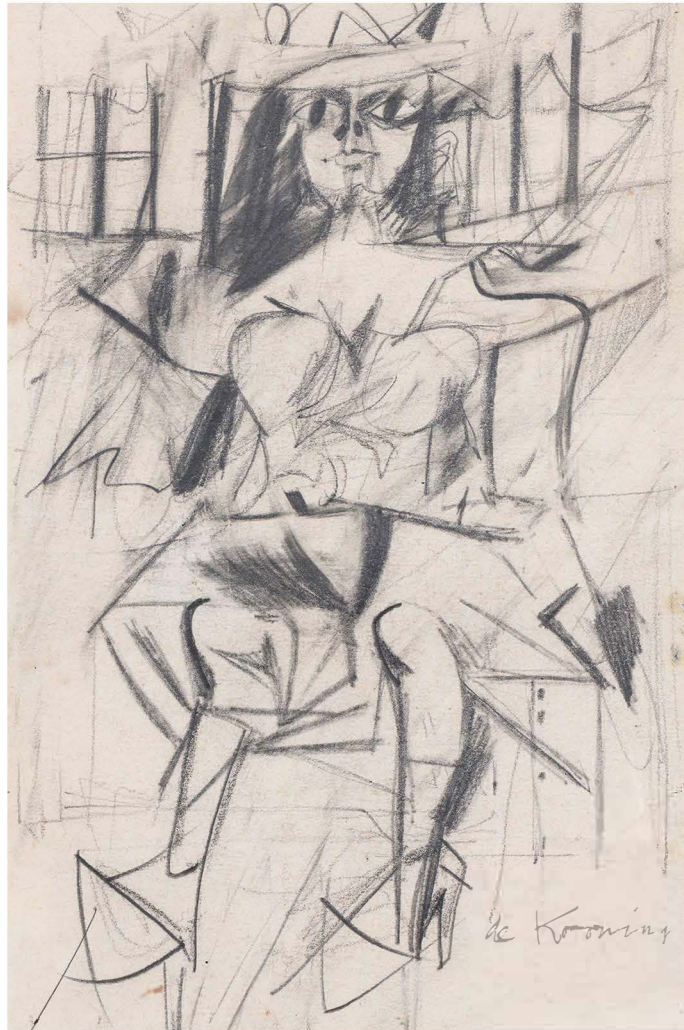
*Untitled (Woman and a Man with Mustche)*, 1959

Oil on paper laid down on canvas

23 by 18 inches (58.4 x 45.7 cm)



[Fact Sheet & Essay](#)



**Willem de Kooning** (1904 - 1997)

*Woman*, 1951

Graphite on paper (double sided)

17 7/8 by 12 1/2 inches (45.4 x 31.8 cm)



[Fact Sheet & Essay](#)



**Yayoi Kusama** (b. 1929)

*INFINITY-NETS BY GOLD [TOFWQWO], 2007*

Acrylic on canvas

57 1/4 by 57 1/4 inches (145.4 x 145.4 cm)



[Fact Sheet & Essay](#)



**François-Xavier Lalanne** (1927 - 2008)

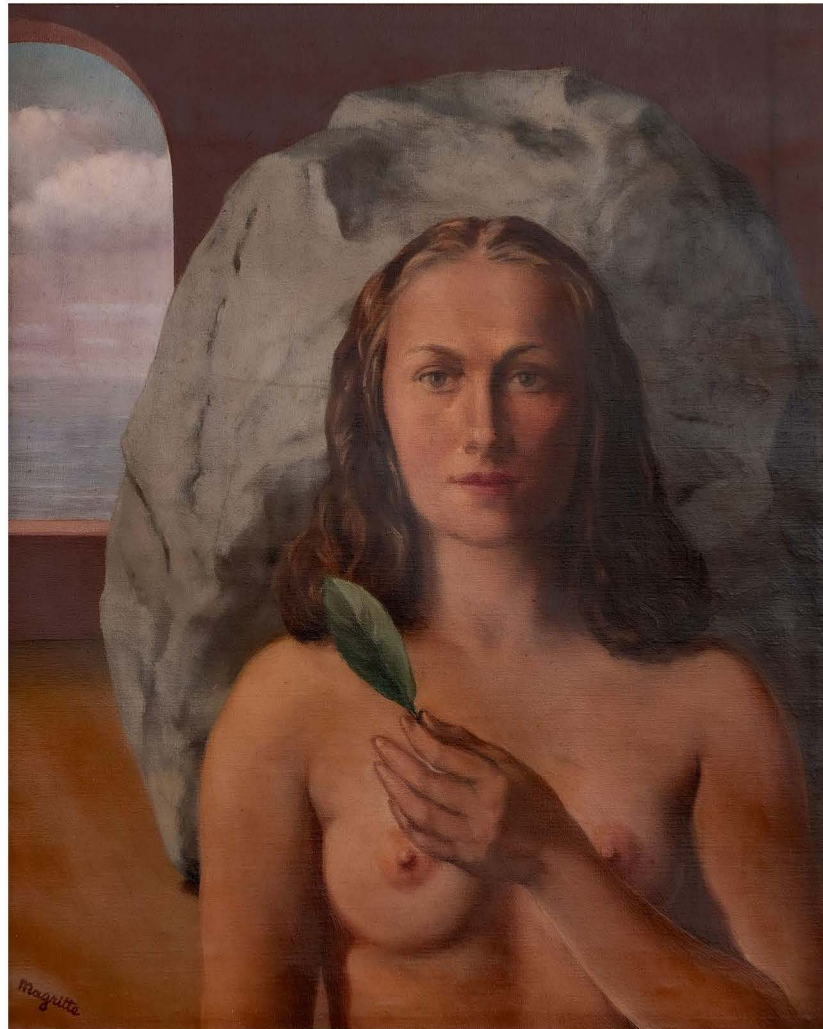
*Fontaine aux Oiseaux de Williamsburg, 1994*

Patinated bronze and carved stone

26 by 25 3/8 by 24 5/8 inches (66 x 64.5 x 62.5 cm)



[Fact Sheet & Essay](#)



**Rene Magritte** (1898 - 1967)

*L'accord Parfait*, 1947 - 1948

Oil on canvas

23 3/4 by 19 7/8 inches (60.3 x 50.5 cm)



Fact Sheet & Essay



**Joan Mitchell** (1925 - 1992)

*Untitled*, 1958

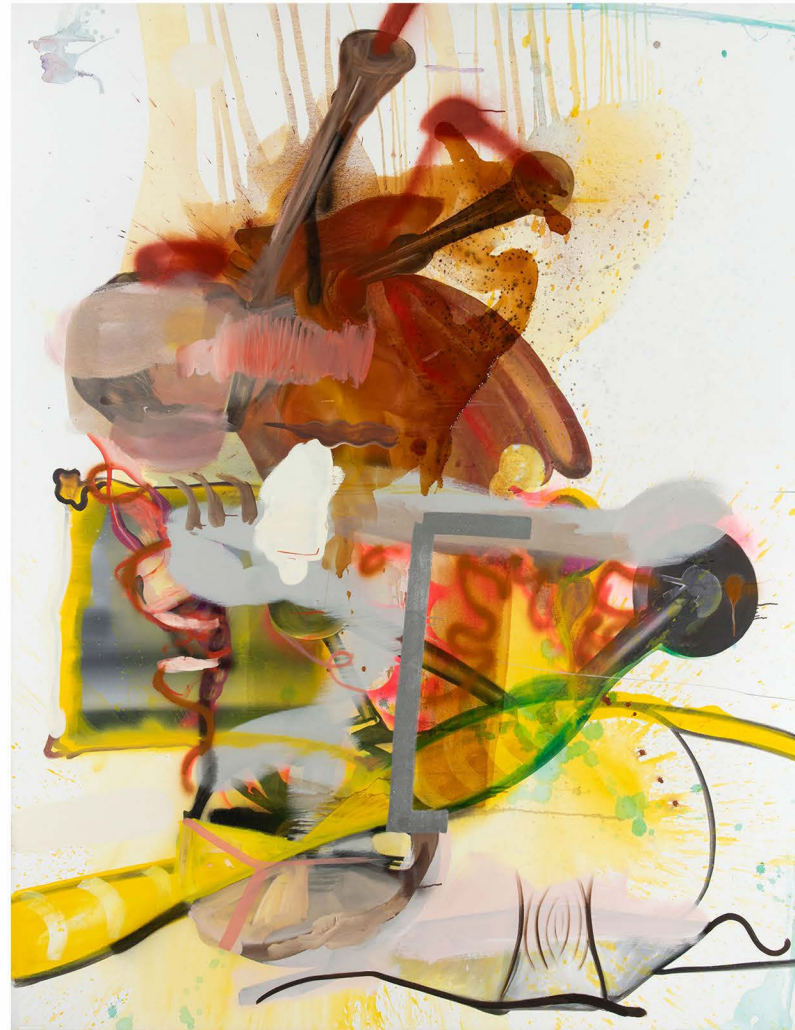
Oil on canvas mounted on masonite

20 by 21 1/4 inches (50.8 x 54 cm)



[Fact Sheet & Essay](#)





**Albert Oehlen** (b. 1954)

*Vereinfachtes Zeichnen*, 2005

Oil on canvas

91 by 71 inches (231.1 x 180.3 cm)





**Andy Warhol** (1928 - 1987)

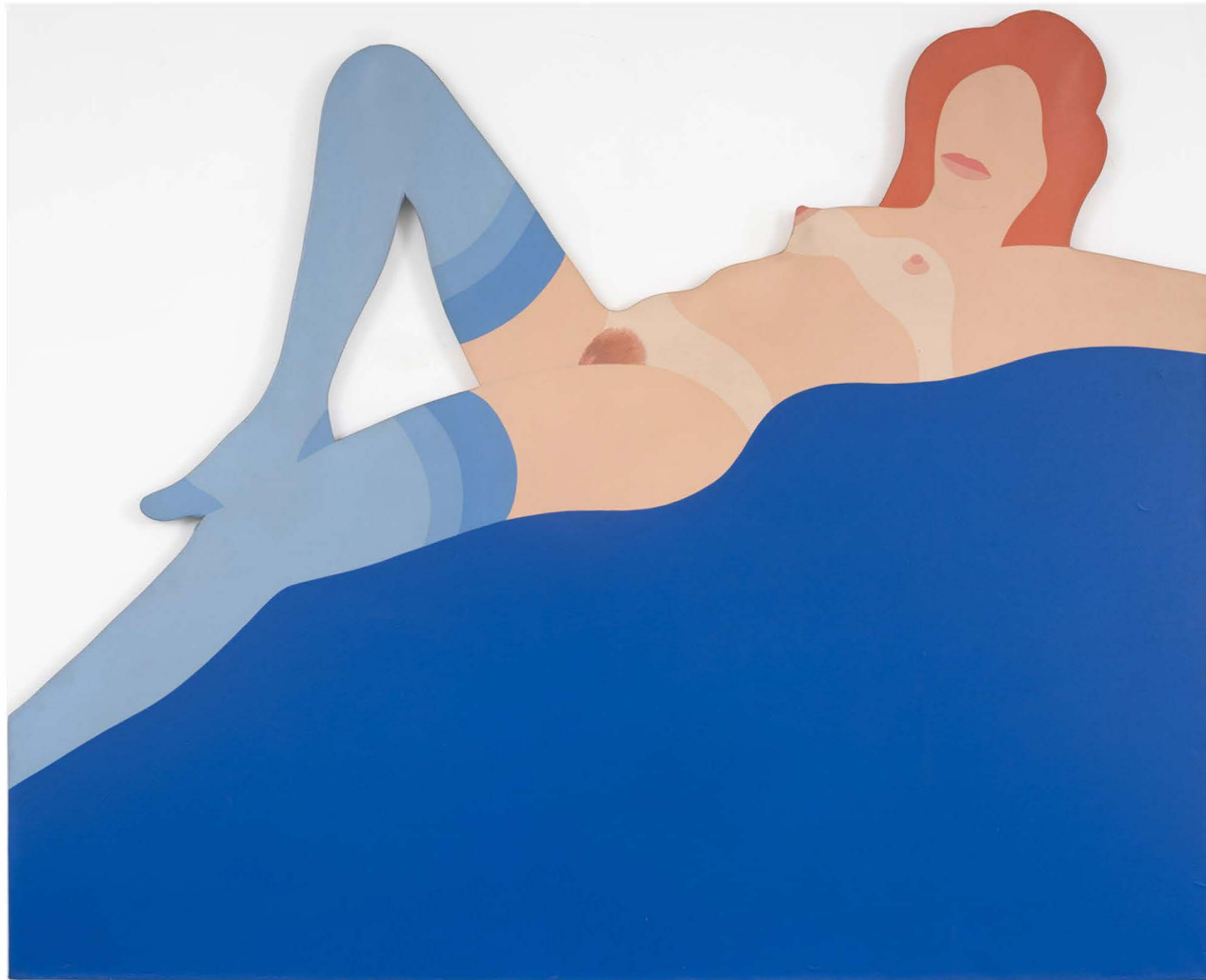
*Jackie*, 1964

Acrylic and silkscreen ink on linen

20 by 16 inches (50.8 x 40.6 cm)



[Fact Sheet & Essay](#)



**Tom Wesselmann** (1931 - 2004)

*Great American Nude #81*, 1966

Acrylic on canvas

53 by 66 inches (134.6 x 167.6 cm)





**Kenneth V. Young** (1933 - 2017)

*Untitled*, 1970

Acrylic on canvas

40 by 39 inches (101.6 x 99.1 cm)



[Fact Sheet & Essay](#)