

GRAY

ART BASEL

June 13 - 16, 2024

Booth F7

# ART BASEL

BOOTH F7

JEAN ARP  
McARTHUR BINION  
ALEXANDER CALDER  
CONSTANTIN BRANCUSI  
TORKWASE DYSON  
THEASTER GATES  
DAVID HOCKNEY  
RASHID JOHNSON  
ALEX KATZ  
ELLSWORTH KELLY  
JUDY LEDGERWOOD  
JOAN MITCHELL  
PABLO PICASSO  
JAUME PLENSA  
RICHARD POUSETTE-DART  
LEON POLK SMITH  
EVELYN STATSINGER  
FRANK STELLA

# JEAN ARP



*Sommeil tourmenté*, 1957  
Bronze with brown patina  
13 × 19 ½ × 12 ⅝ inches  
33 × 49.5 × 32.1 cm  
Unique, cast May 14, 1958



# CONSTANTIN BRANCUSI



*L'Oiseau d'or (The Golden Bird), 1919*

Polished bronze on a marble base

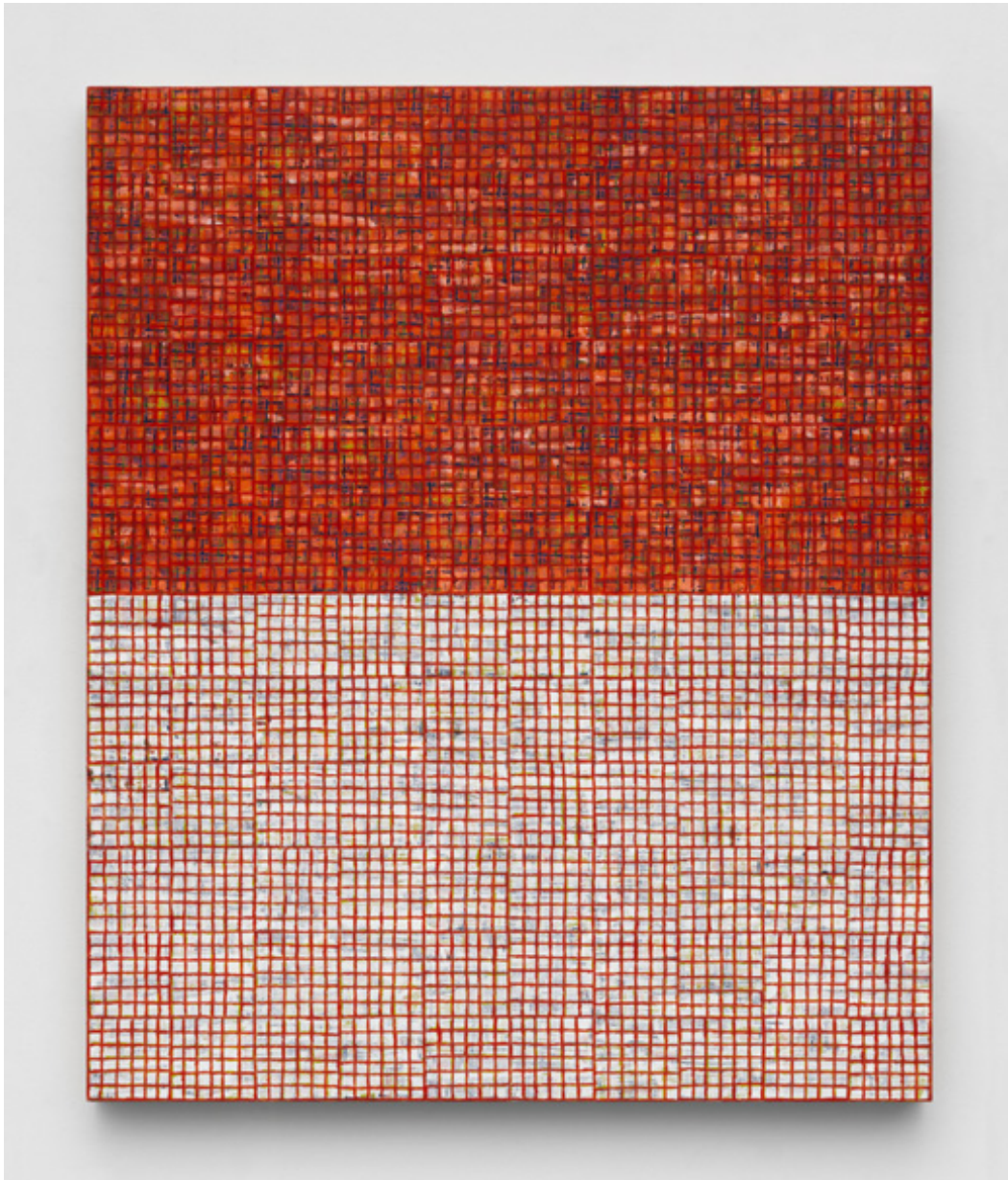
50  $\frac{1}{8}$  × 6  $\frac{1}{4}$  × 7  $\frac{1}{8}$  inches

127.3 × 15.9 × 18.1 cm

Edition 2 of 5, cast 1981



# McARTHUR BINION

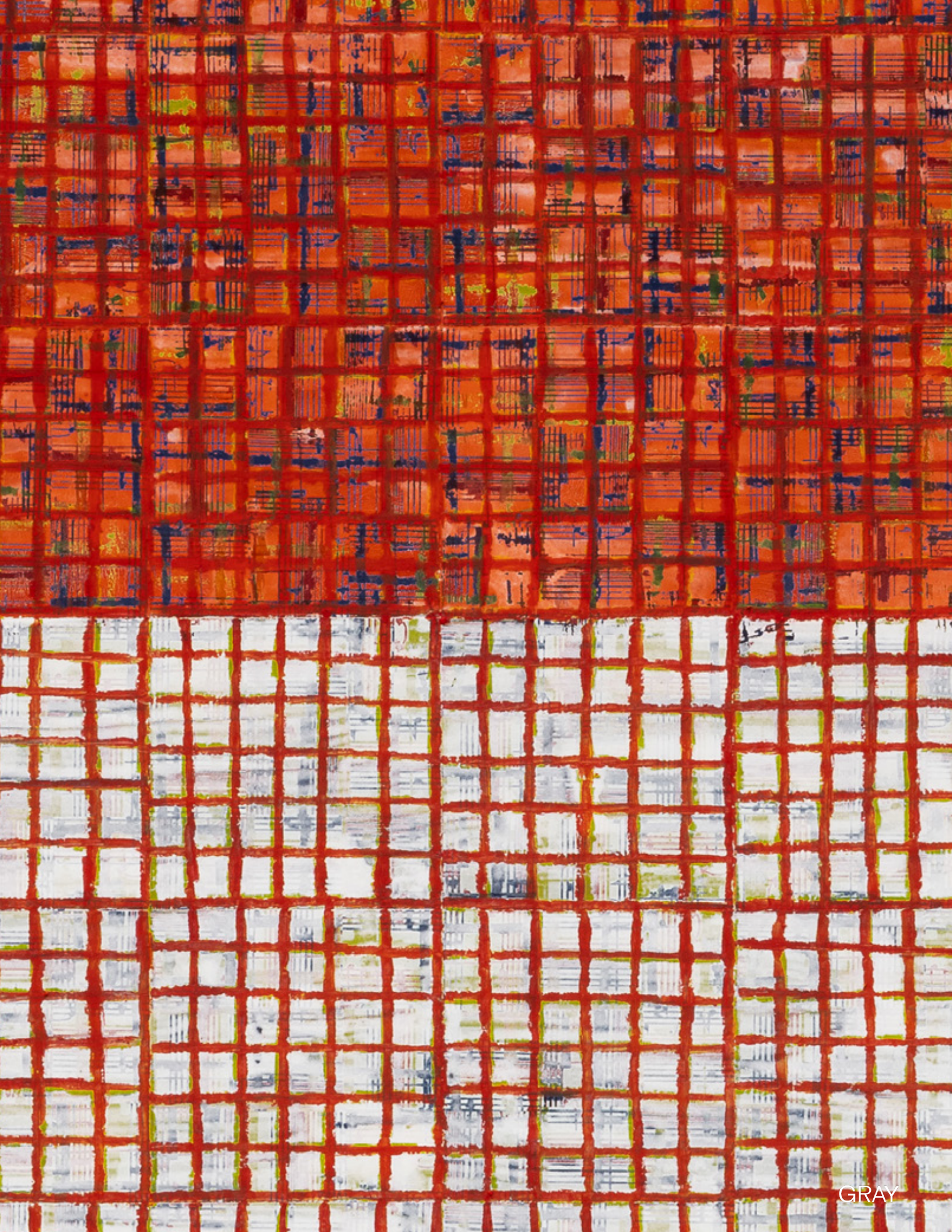


*Handmadeness:seven, 2023*

Ink, oil paint stick and paper on board

48 × 40 × 2 1/8 inches

121.9 × 101.6 × 5.4 cm







Installation view of *McArthur Binion and Jules Allen: Me and You*, GRAY Chicago, Chicago, IL, 2024

# ALEXANDER CALDER



*Standing Mobile (Untitled)*, 1953  
Sheet metal, brass wire and paint  
8 ¼ × 11 × 2 inches  
21 × 27.9 × 5.1 cm



# TORKWASE DYSON

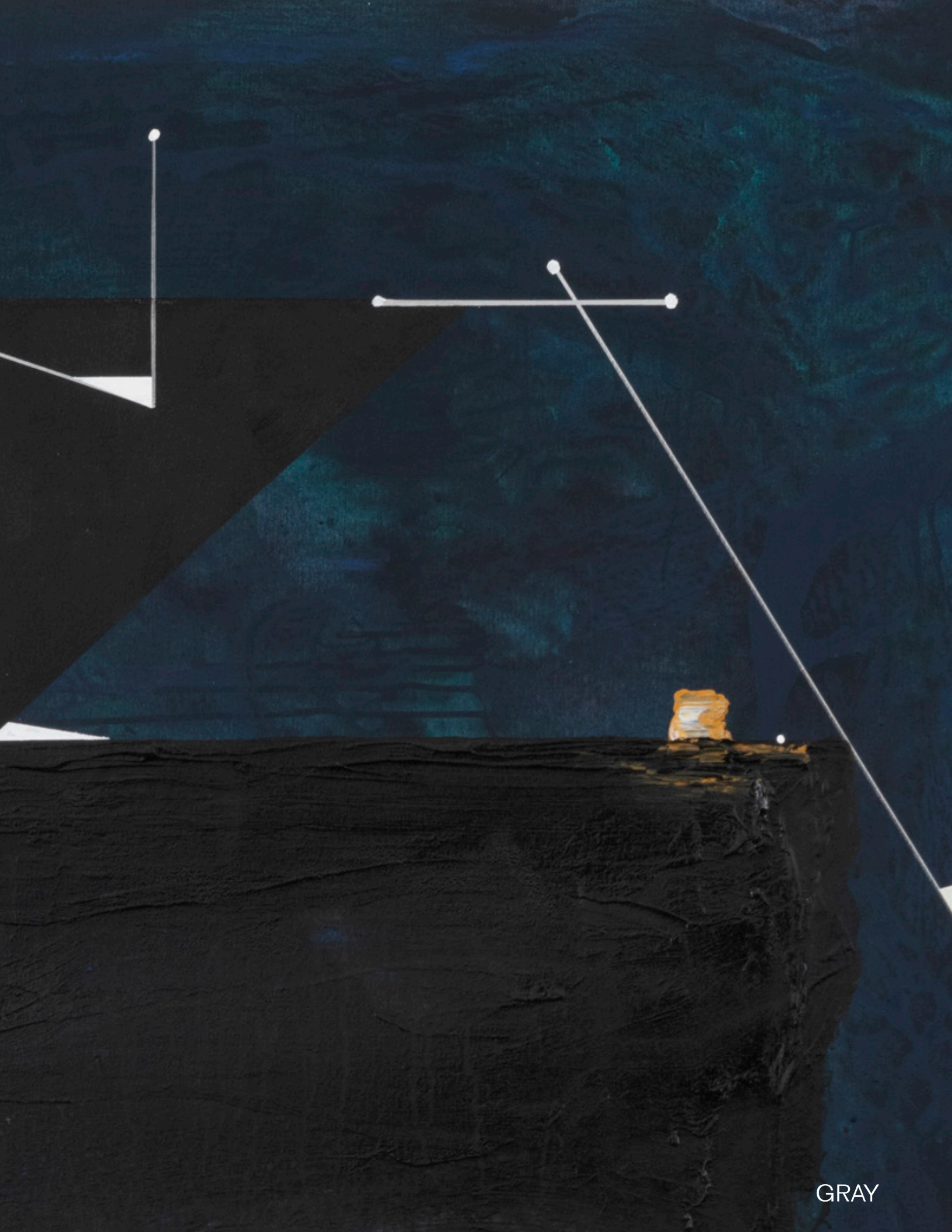


*A Bolt from the Blue\_03, (Elevation), 2023*

Acrylic on canvas

66 × 48 inches

167.6 × 121.9 cm





# TORKWASE DYSON

Art Basel Unlimited



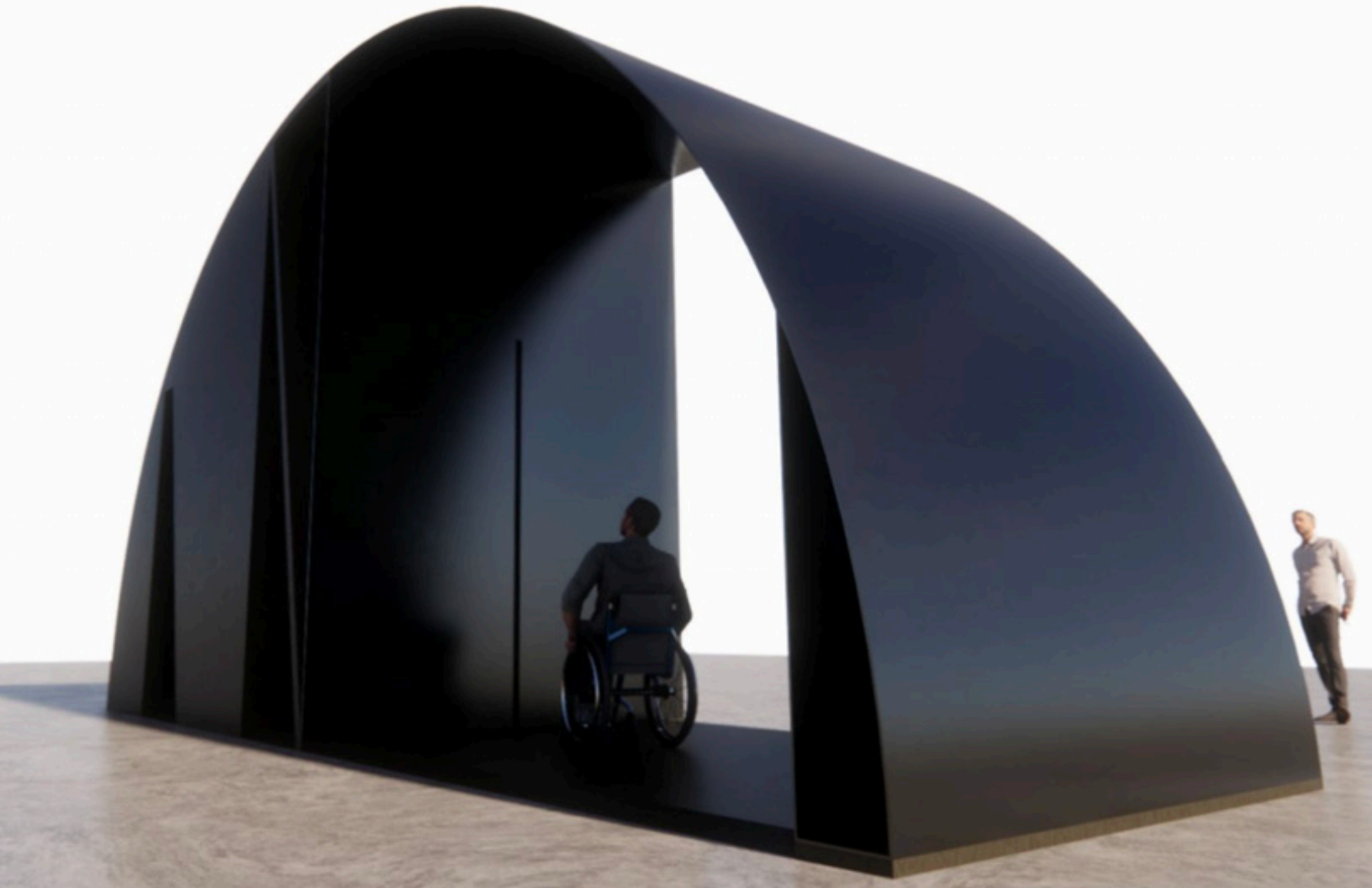
*Errantry, 2024*

Steel and timber

172 × 340 × 120 inches

436.9 × 863.6 × 304.8 cm

GRAY



GRAY



# TORKWASE DYSON



*The Distance is My Life (Migration Stories) 1, 2022*

Graphite, ink and acrylic on paper

Framed: 29 × 23 × 2 inches (73.7 × 58.4 × 5.1 cm)

# THEASTER GATES



*Untitled (Black Vessel), 2023*  
Woodfired stoneware and manganese glaze  
44 × 18 × 10 inches  
111.8 × 45.7 × 25.4 cm







Installation view of *Theaster Gates: Young Lords and Their Traces*, New Museum, New York, NY, 2022

# THEASTER GATES



*Silver monochrome with 3 lines, 2022*

Wood, water-based acrylic, rubber and tar

84 ¼ × 36 ½ × 5 ¾ inches

214 × 92.7 × 14.6 cm



GRAY

# THEASTER GATES



*Yellow Study, 2024*

Oil-based enamel, rubber torch down, bitumen, metal tacks and wood

23 ¼ × 23 ¼ × 4 inches

59.1 × 59.1 × 10.2 cm

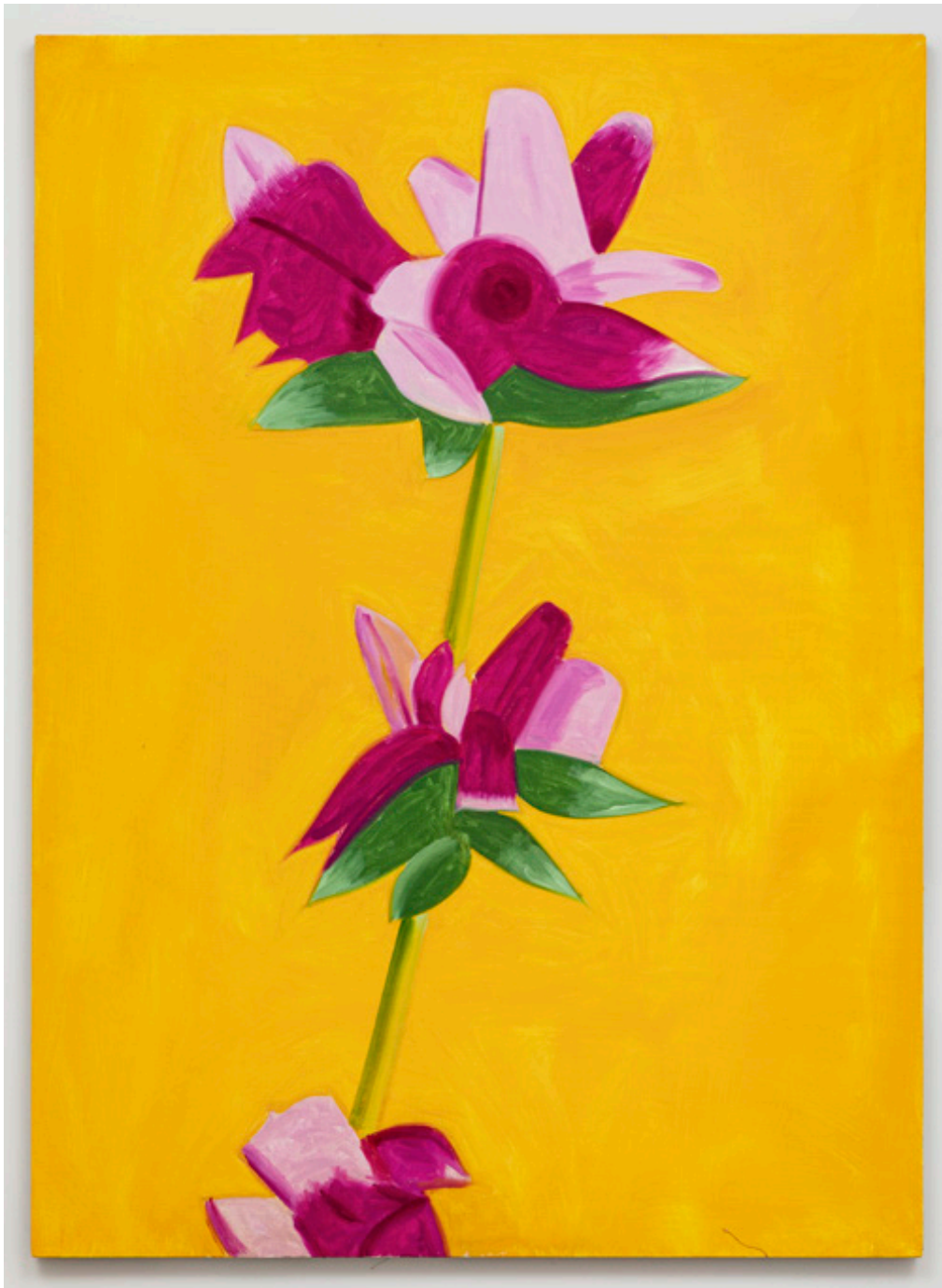






Installation view of *Theaster Gates: Afro-Mingei*, Mori Art Museum, Tokyo, Japan, 2024

# ALEX KATZ



*Azalea on Yellow*, 2020

Oil on linen

66 ¼ × 48 ⅞ inches

168.3 × 122.2 cm



# ALEX KATZ



*Alice*, 2007  
Oil on linen  
96 × 48 inches  
243.8 × 121.9 cm





# ALEX KATZ



*Ada on Stairs, 2002*

Oil on board

16  $\frac{1}{8}$  × 22  $\frac{3}{4}$  × 1  $\frac{1}{2}$  inches

41 × 57.8 × 3.8 cm





# ELLSWORTH KELLY



*Brooklyn Bridge II, 1958*

Oil on linen

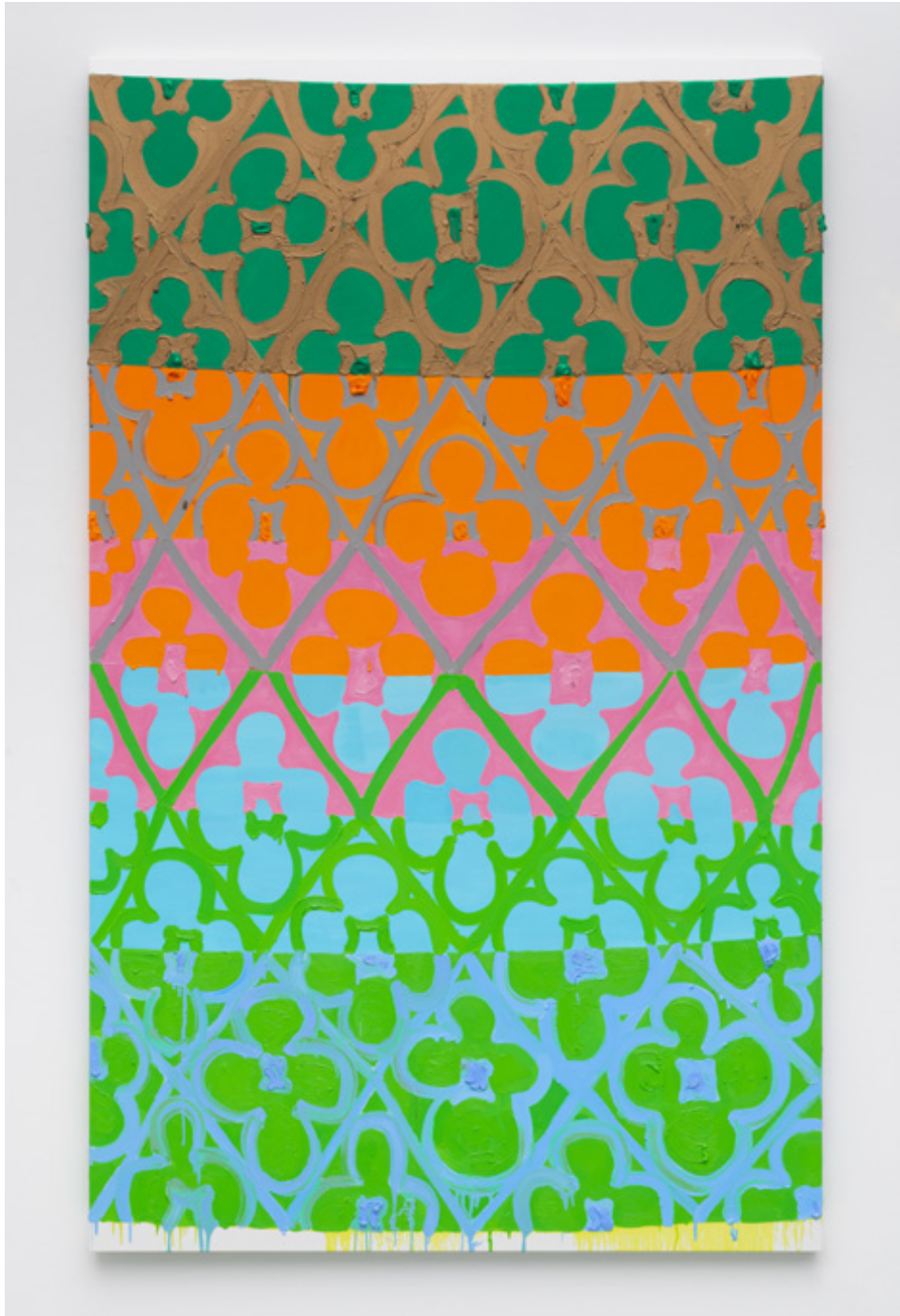
29  $\frac{1}{8}$  × 15  $\frac{1}{8}$  × 2  $\frac{1}{8}$  inches

74 × 38.4 × 5.4 cm



GRAY

# JUDY LEDGERWOOD



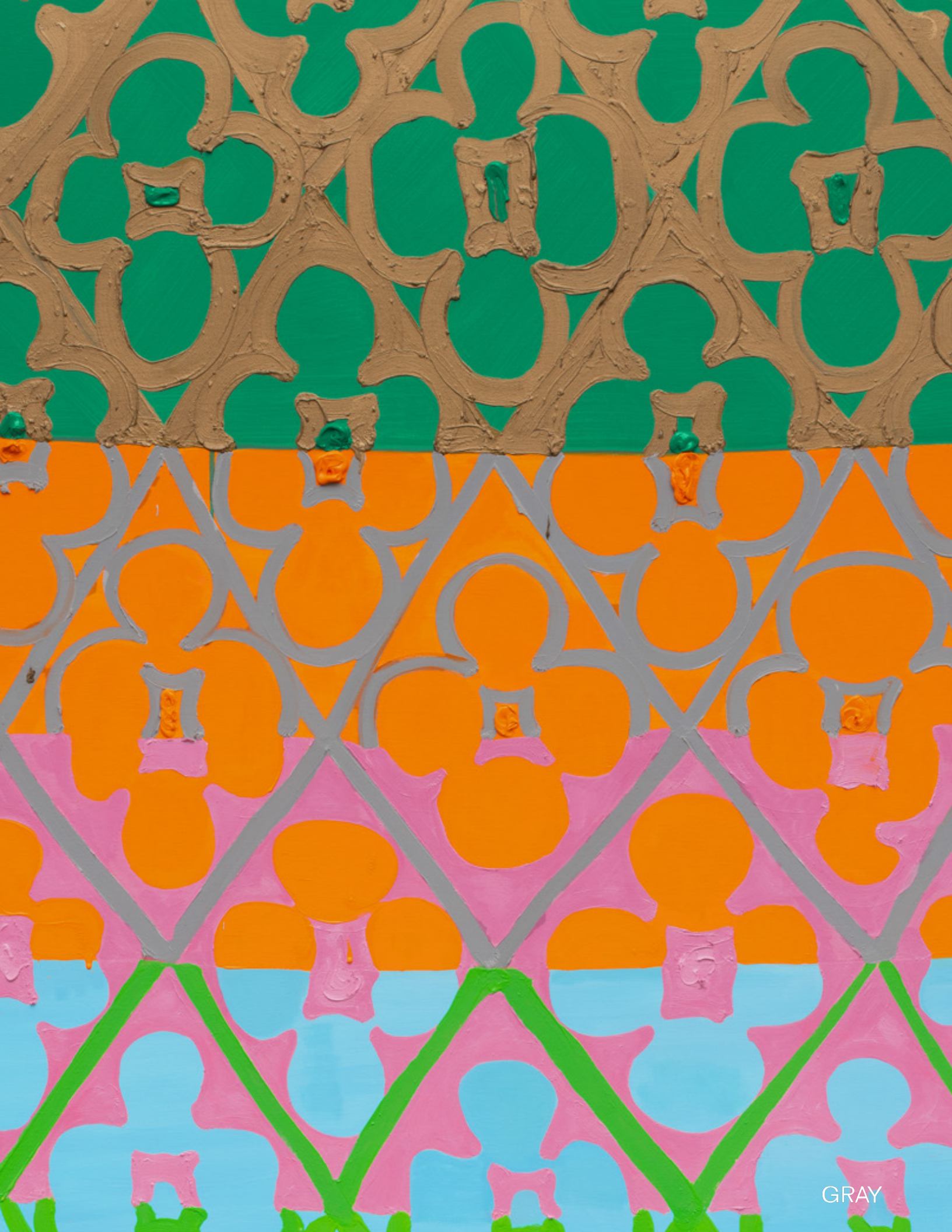
*Chromatic Couplets, 2024*

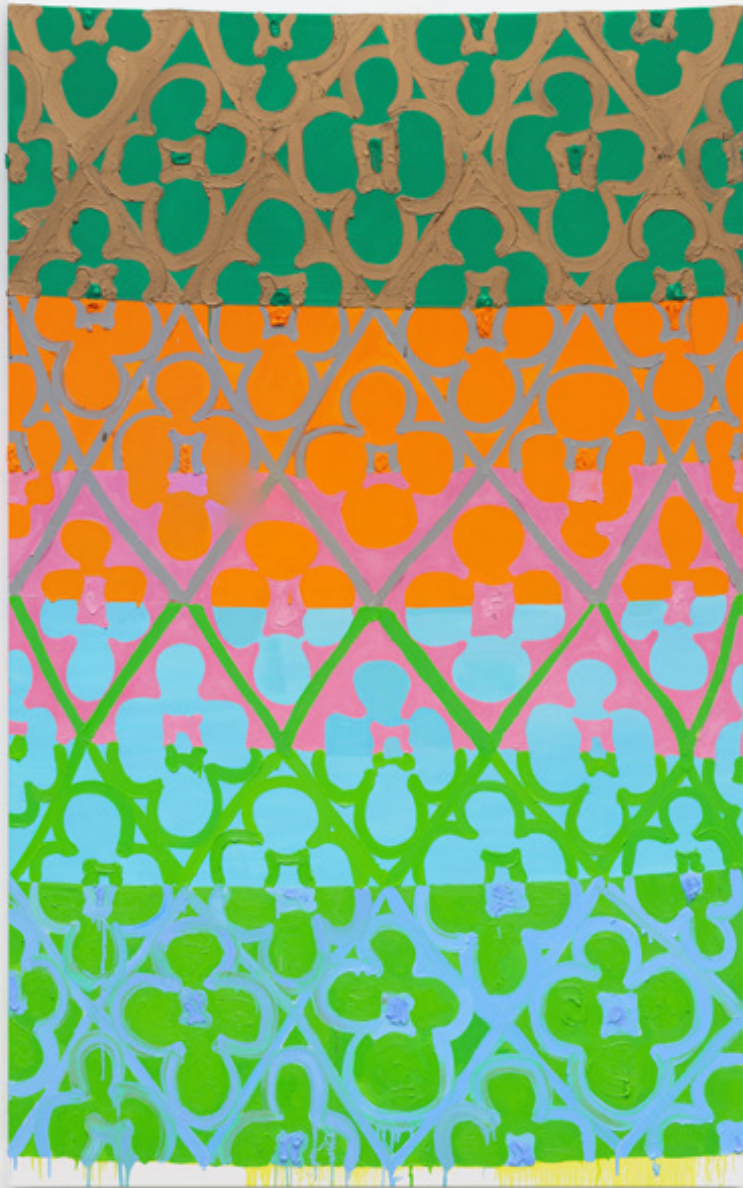
Oil on linen

78 × 48 inches

198.1 × 121.9 cm

GRAY







Judy Ledgerwood, *Chromatic Patterns for the Graham Foundation*  
The Graham Foundation, Chicago, Illinois, 2014

# PABLO PICASSO



*Femme nue couchée* (recto); *Trois têtes* (verso), 1966

Pastel and pencil on paper

10 <sup>3</sup>/<sub>8</sub> × 19 <sup>7</sup>/<sub>8</sub> inches (26.4 × 50.5 cm)

Framed: 18 × 27 <sup>1</sup>/<sub>2</sub> × 1 <sup>3</sup>/<sub>8</sub> inches (45.7 × 69.9 × 3.5 cm)



# JAUME PLENSA



*Martina Silence, 2023*

Black granite

73 ½ × 36 ½ × 27 ⅞ inches

187 × 93 × 71 cm



# JAUME PLENSA



*Hortense in Slumberland, 2021*

Murano glass

14 × 9 × 10 ½ inches

35.6 × 22.9 × 26.7 cm

Edition of 8





Installation view of *Jaume Plensa: Janus*, Chiesa di San Gallo, Venice, Italy, 2024

# JAUME PLENSA



*Endless (Study #2), 2024*

Bronze

26 <sup>3</sup>/<sub>4</sub> × 8 <sup>1</sup>/<sub>4</sub> × 8 <sup>1</sup>/<sub>4</sub> inches

68 × 21 × 21 cm

Edition of 9



Installation view of *Endless*, Raclin Murphy Museum of Art, Notre Dame, Indiana

# RICHARD POUSETTE-DART



*Untitled Radiance (Red and Blue)*, 1969–70

Acrylic on canvas

58 × 45 inches

147.3 × 114.3 cm





# LEON POLK SMITH



*Black-White Diagonal*, 1957

Paint on canvas

27 ½ × 55 ¼ inches

69.9 × 140.3 cm



# LEON POLK SMITH



*Blue White, 1979*  
Acrylic on canvas  
64  $\frac{1}{8}$  × 90  $\frac{3}{8}$  inches  
162.9 × 229.6 cm



Installation view of *Brooklyn Abstraction: Four Walls, Four Artists*, Brooklyn Museum, Brooklyn, NY, 2022

# EVELYN STATSINGER



*Messages*, 1974  
Oil on linen  
49 <sup>3</sup>/<sub>4</sub> × 43 <sup>3</sup>/<sub>4</sub> × 2 inches  
126.4 × 111.1 × 5.1 cm



# FRANK STELLA



*Diavolozoppo (#2, 2X), 1984*

Mixed media on canvas with etched magnesium, aluminum and fiberglass

84 × 111 ½ × 22 inches

213.4 × 283.2 × 55.9 cm



GRAY

ART BASEL

BOOTH F7

June 13 - 16, 2024

[richardgraygallery.com](http://richardgraygallery.com)