

LEHMANN MAUPIN

Art Basel
Booth K15
June 13–16, 2024
Messe Basel

NEW YORK SEOUL LONDON

lehmannmaupin.com

ART BASEL

Booth K15

June 13 –16, 2024

Messe Basel

Messeplatz 10

4058 Basel

Switzerland

Having participated in the fair for over two decades, Lehmann Maupin returns to Art Basel with a presentation that celebrates its artists' global institutional programming, from the 60th International Art Exhibition of La Biennale di Venezia and Pirelli HangarBicocca in Milan, to the National Galleries Scotland in Edinburgh and SITE Santa Fe in New Mexico. Highlights include works by **Teresita Fernández**, **Kim Yun Shin**, **Do Ho Suh**, and **Nari Ward**—who each have major exhibitions on view in museums and biennials around the world. Together, the works on view traverse a wide range of media, probing the dimensionality and haptic experience of material.

Concurrent to the fair in Europe, a group exhibition is on view at Lehmann Maupin's seasonal gallery in Milan, Italy through June 21.

To view additional images and information about the artworks please [click here](#).

Kader Attia
Hernan Bas
Heidi Bucher
Loriel Beltrán
McArthur Binion
Lee Bul
Dominic Chambers
Billy Childish
Mandy El-Sayegh
Tracey Emin
Teresita Fernández
Todd Gray
Liza Lou
Tammy Nguyen
Arcmanoro Niles
Catherine Opie
Oren Pinhassi
Lari Pittman
Alex Prager
Robin Rhode
David Salle
Kim Yun Shin
Do Ho Suh
Mickalene Thomas
Cecilia Vicuña
Nari Ward
Liu Wei

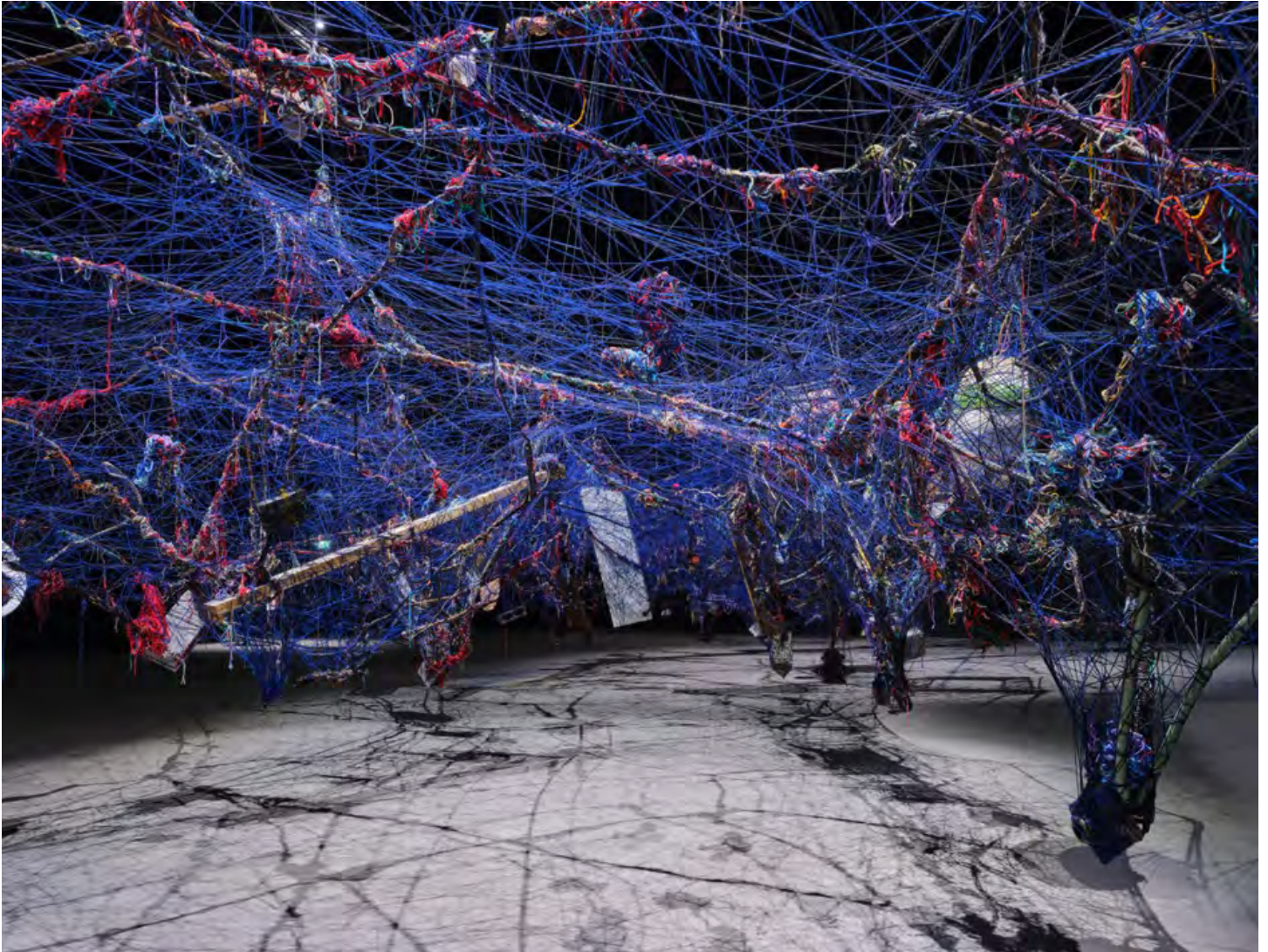
NARI WARD

In a career spanning over three decades, Nari Ward has gained recognition for an interdisciplinary and multimedia practice that engages historical and contemporary discourse around race, migration, democracy, identity, and community. Ward is best known for his wall and installation based sculptural works created primarily from materials found and collected throughout Harlem, his longtime neighborhood in New York. These objects imbue his work with a sense of intimacy, reflecting the shared experience of community. Combining materials to re-contextualize their original meanings, Ward's assemblages probe a range of spiritual and conceptual issues through literal and metaphorical juxtaposition.



PIRELLI HANGAR BICOCCA

Ward's retrospective exhibition *Ground Break* is currently on view at Pirelli HangarBicocca in Milan, Italy through July 28.



“*Ground Break* reminds me of another artist—Leonardo—by harnessing the enormity of and wonder at the secret codes and symbols that structure and shape our worldly existence.”

— Charlotte Janson, *Financial Times*



NARI WARD

Empire

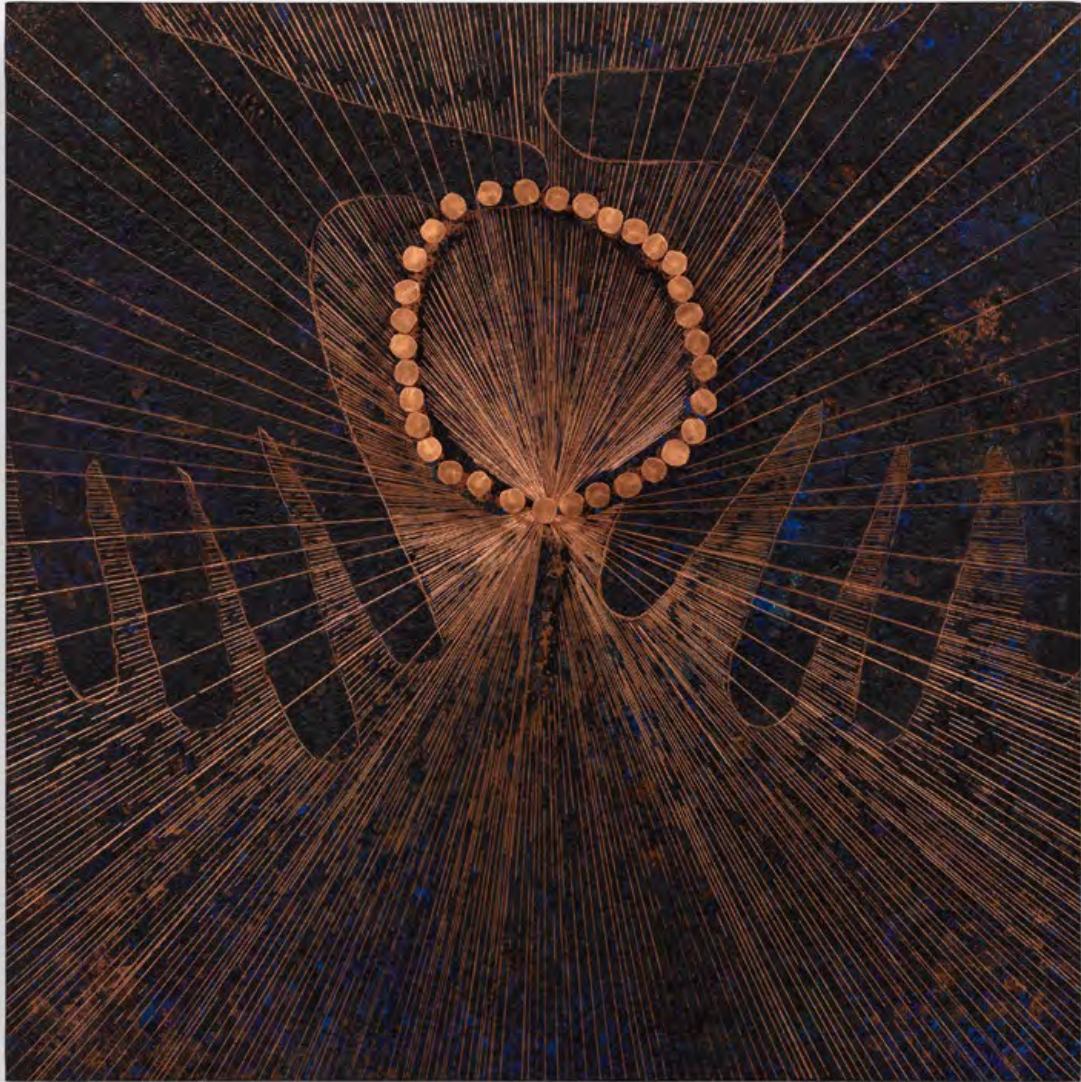
2023. Sterilized cotton, sugar, metal wire, stencil ink, furniture

66 x 42 x 19 inches (167.6 x 106.7 x 48.3 cm)

LM35975

\$150,000 USD

Nari Ward's sculptural installation *Empire* probes themes of identity through highly tactile material. Composed of new and found art objects sourced from his neighborhood, the work comprises a decorative glass cabinet painted black with indelible ink and filled with an assortment of unusual black globes. These globes are tufted in balls of cotton dipped in sugar and singed with fire, resembling scorched topographies. Referencing the western museological phenomenon of the cabinet of curiosities, *Empire* gestures towards the often invisible forces that construct community and cultural identity.



“It’s about the secrets materials hold, the alchemical possibilities they possess and their mysterious power over culture.”

— Nari Ward, *Frieze*

NARI WARD

Prayers Series; Circuit II

2023. Copper sheet, copper nails, and darkening patina

11.5 x 11.5 x 2 inches (29.2 x 29.2 x 5.1 cm)

LM35899

\$40,000 USD



NARI WARD

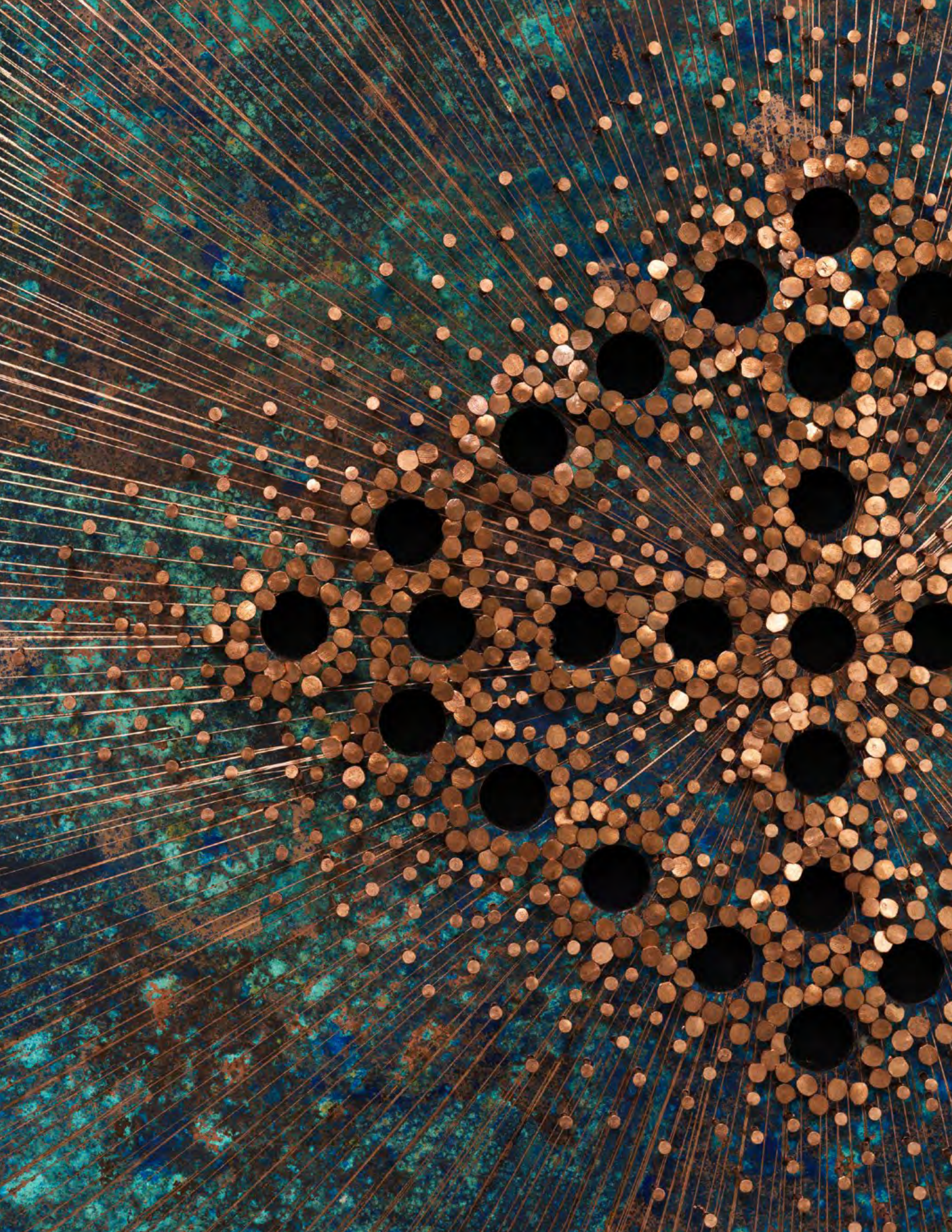
Correctional Circle 0128

2018. Oak wood, copper sheet, copper nails, and darkening patina

48 x 48 inches (121.9 x 121.9 cm), diameter

LM28815

\$270,000 USD



KIM YUN SHIN

A selection of paintings and sculpture by first-generation Korean artist Kim Yun Shin are engaged with the natural environment. Crafted from solid wood, Kim's sculptures are deeply rooted in traditional Korean hanok architecture, which uses a distinctive technique that joins wooden blocks without nails, as well as the philosophical concept of yin (division and fragmentation) and yang (addition and integration).



Similarly, Kim's vibrant paintings allow her to explore these sculptural concepts in a two-dimensional format. Kim seeks to access the primordial world through her mediums, and in doing so, her works visualize the intersection between nature, time, and history, reconsidering the essence of human existence.

VENICE BIENNALE

Concurrent to the fair, Kim's work is prominently displayed in *Foreigners Everywhere*, the 60th International Art Exhibition of La Biennale di Venezia, curated by Adriano Pedrosa. A selection of the artist's historically significant sculptures are on view in the Giardini section of the main biennale exhibition.





KIM YUN SHIN

Add Two Add One Divide Two Divide One 2001-689

2001. Algarrobo wood

22.83 x 30.31 x 12.99 inches (58 x 77 x 33 cm)

LM36639

\$75,000 USD

“While her formal training made her a trailblazer in her home country, at the heart of her practice lies a more innate gift: the ability to surrender to her materials and to the world around her. Kim aligns herself with the rhythms of her environment, crafting works that resonate with nature’s pulse.”

— Max Rabb, *Artsy*





KIM YUN SHIN

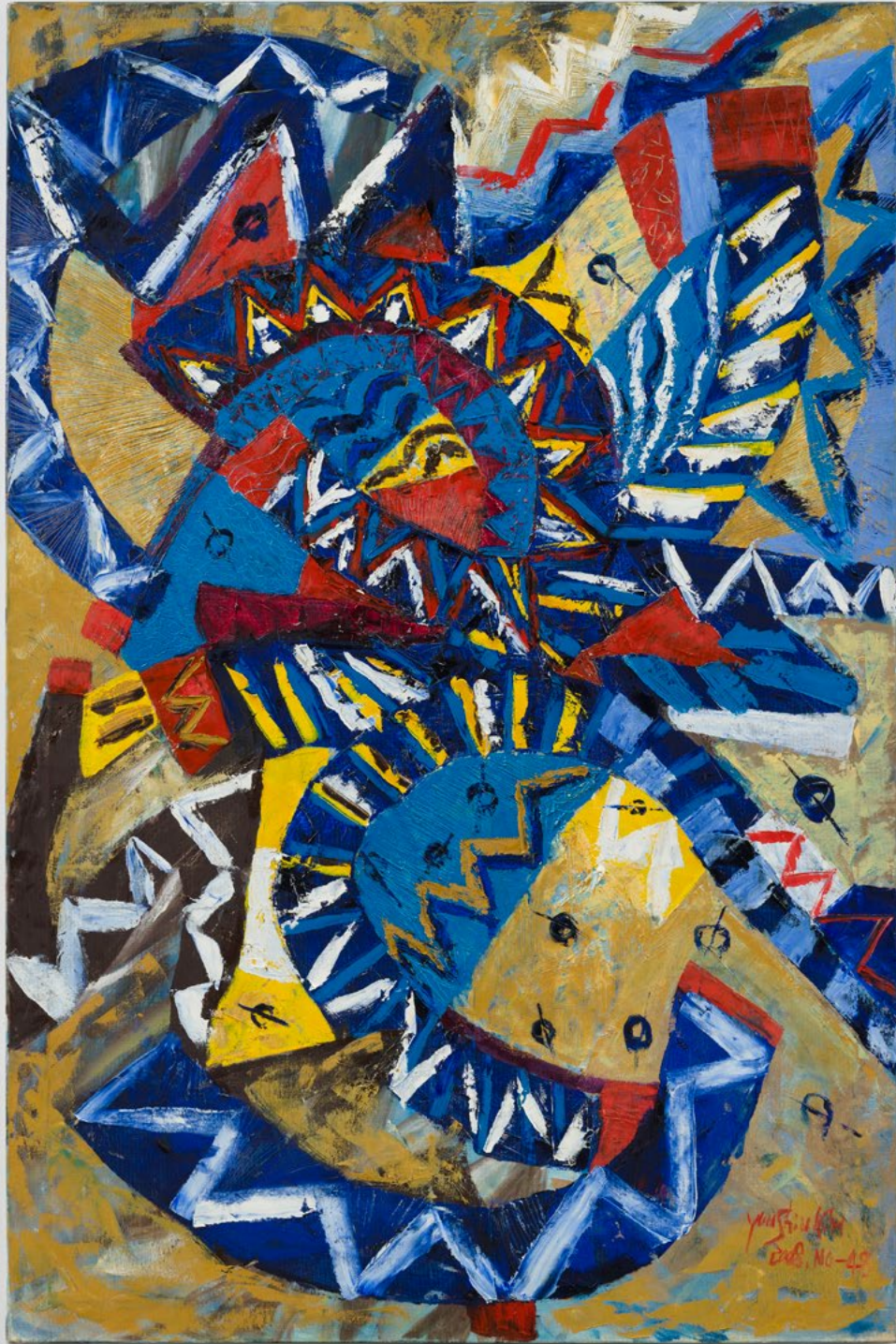
Song of My Soul 2016-75

2016. Oil and acrylic on canvas

47.24 x 59.06 x 1 inches (120 x 150 x 2.54 cm)

LM36648

\$75,000 USD



KIM YUN SHIN

Song of My Soul 2008-48

2008. Oil on canvas

70.875 x 47.25 inches (180 x 120 cm)

LM37137

\$95,000 USD





KIM YUN SHIN

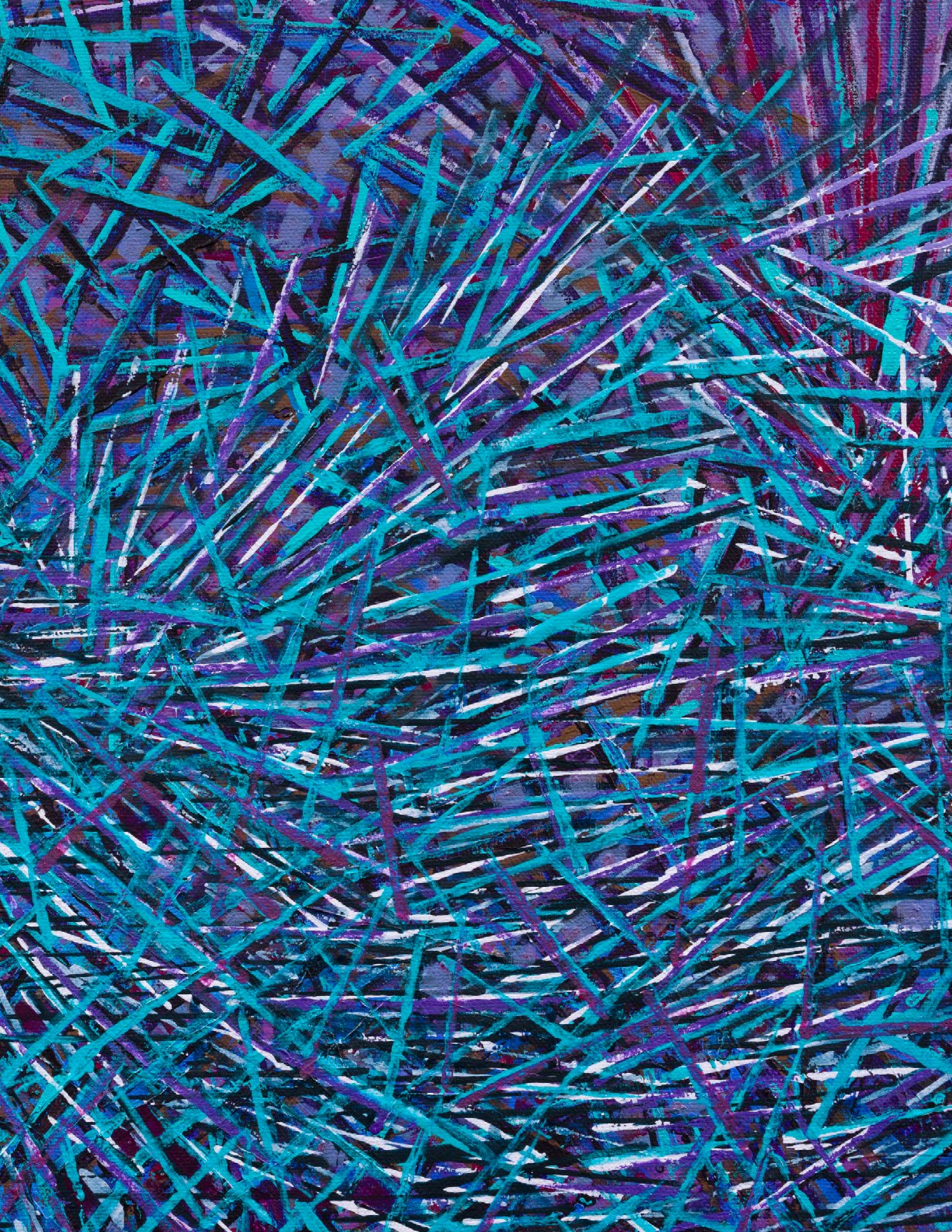
This Moment 2020-16

2020. Acrylic on canvas

47.25 x 70.875 inches (120 x 180 cm)

LM37139

\$95,000 USD





KIM YUN SHIN

Song of My Soul 2010-243

2010. Oil on canvas

47.25 x 39.375 inches (120 x 100 cm)

LM37208

\$60,000 USD



DO HO SUH

Do Ho Suh's boundary pushing use of paper as a sculptural medium is reflected in a key work from the artist's *Self-Portrait/s* series, presented at the booth. Developed between 2007 and 2021 at Dieu Donn  in Brooklyn, Suh's *Self-Portrait/s* are Gampi and Abaca paper casts of his *Uni-form/s: Self-portrait/s: My 39 Years* (2006). The works build on the artist's long-standing inquiry into ideas around identity, memory, and physical space. For Suh, clothing presents the most immediate personal space we inhabit. In these new paper works, the uniforms are ghostly apparitions of their original selves—a memorialization of intimate spaces once occupied and the associations and memories those spaces hold.



NATIONAL GALLERIES SCOTLAND

Suh's *Self-Portrait/s* originally debuted in his current solo exhibition *Tracing Time* at the National Galleries Scotland, on view through September 1.





DO HO SUH

Self-Portrait/s

2011. Molded Abaca paper

77.17 x 111.02 x 34.65 inches (196 x 282 x 88 cm)

LM34462

\$250,000 USD



“Everything he makes is delicate yet tensile, light but profound, and always underpinned by his graceful draughtsmanship.”

— Laura Cumming, *The Guardian*

TERESITA FERNÁNDEZ

The gallery will present wall-based sculptural work by Teresita Fernández, on the heels of her solo exhibition *Soil Horizon* at Lehmann Maupin New York. Across her decades-long practice, Fernández explores an expansive reimagining of what constitutes landscape: from the subterranean to the cosmic, to contentious borderlines and borderlands.



SITE SANTA FE

This summer, SITE Santa Fe will present *Teresita Fernández / Robert Smithson*. Opening in July, this two-artist exhibition will feature over 30 works by Fernández and mark the first time Robert Smithson's oeuvre has been placed in conversation with an artist working today. Other forthcoming projects include a monumental site-specific installation at the Detroit Institute of Arts to be unveiled in 2025.





TERESITA FERNÁNDEZ

Soil Horizon 5

2024. Solid charcoal, sand, and mixed media on copper panel

61.5 x 85.5 x 3 inches (156.2 x 217.2 x 7.6 cm)

LM36989

\$375,000 USD



TERESITA FERNÁNDEZ

Manigua(Apparition)2


2023. Solid charcoal, black sand, mixed media on aluminum panel

84 x 60 x 3 inches (213.4 x 152.4 x 7.6 cm)

LM36197

\$375,000 USD

In *Manigua(Apparition)2*, the artist constructs an immersive landscape by meticulously assembling charcoal, black sand, and other natural materials onto a large reflective surface. Using raw materials extracted from the earth, Fernández demonstrates how landscape bears signs of intercontinental exchange and colonial power. As the artist uncovers the many layers of history, culture, and politics embedded in place, she evokes the notion of the “stacked landscape”—an understanding of place that embraces the many social and historical dimensions embedded within any single location.



Fernández has dug deep into her own internal life and consciousness and returned with something fresh and profound and nourishing.”

— Hilton Als, *The New Yorker*

KADER ATTIA



KADER ATTIA

Mirrors and Masks

2023. Wooden mask, mirrors, pigment, glue, metal stand

Mask: 15.75 x 7.87 x 7.87 inches (40 x 20 x 20 cm)

Base: 9.84 x 9.84 x 1.18 inches (25 x 25 x 3 cm)

Stand: 62.99 inches (160 cm)

LM36172

€90,000 EUR



HERNAN BAS



HERNAN BAS

House Training (South American Blue Flamingo)

2016. Acrylic on linen

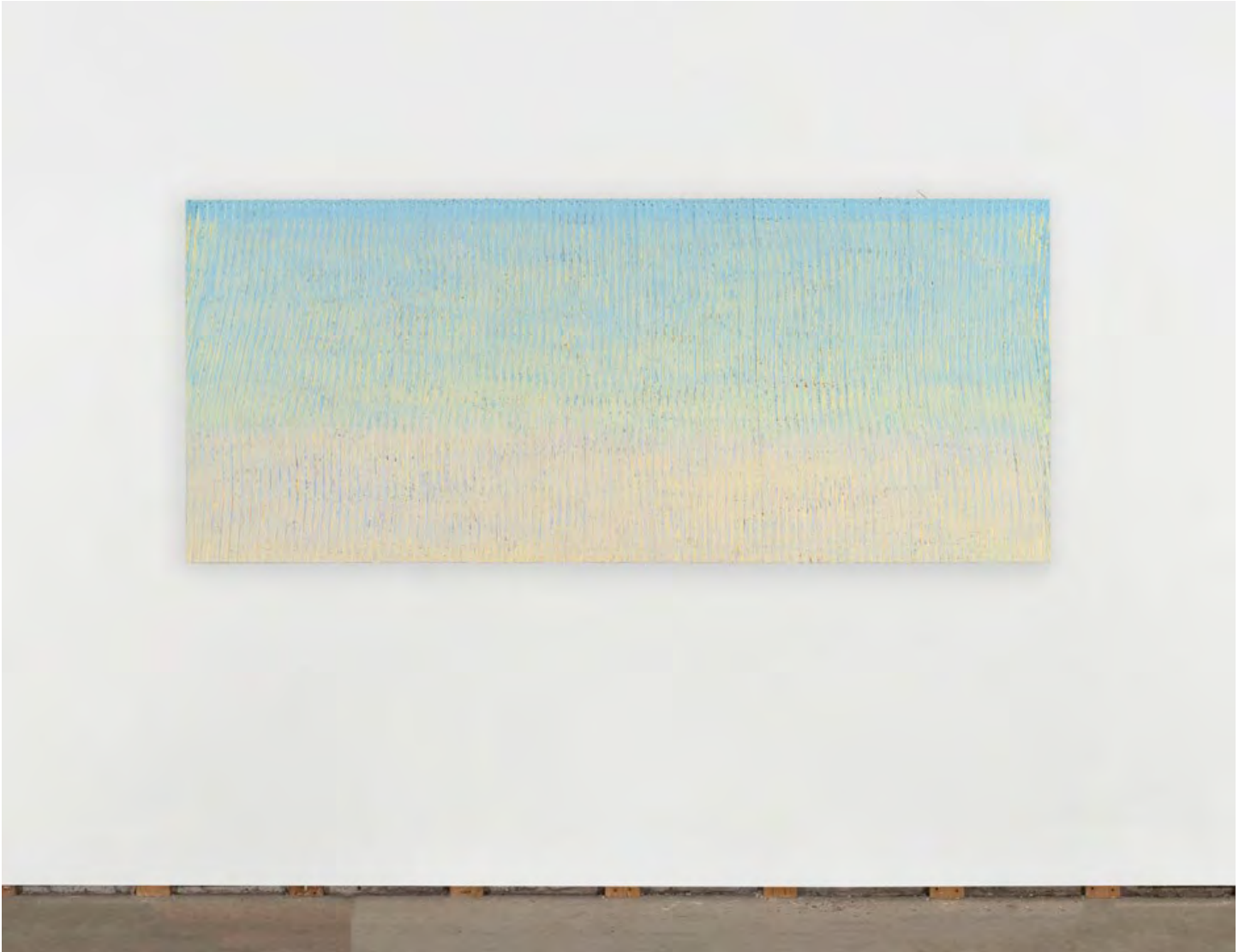
60 x 48 x 1.375 inches (152.4 x 121.92 x 3.5 cm)

LM22789

Please inquire



LORIEL BELTRÁN



LORIEL BELTRÁN

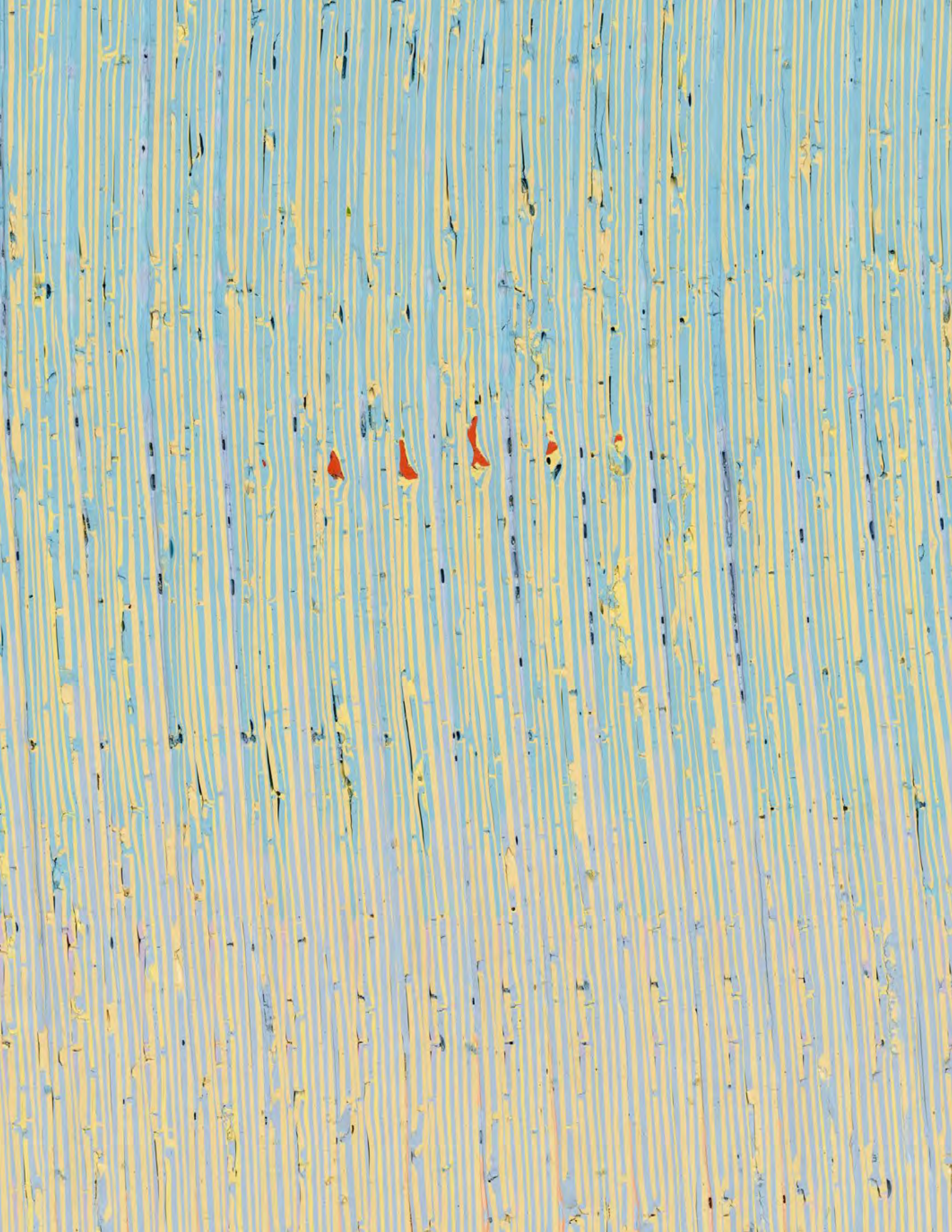
Miami, February 21st, 6:04pm looking east

2024. Latex paint on panel

36 x 85 inches (91.4 x 213.4 cm)

LM36774

\$45,000 USD



MCARTHUR BINION



MCARTHUR BINION

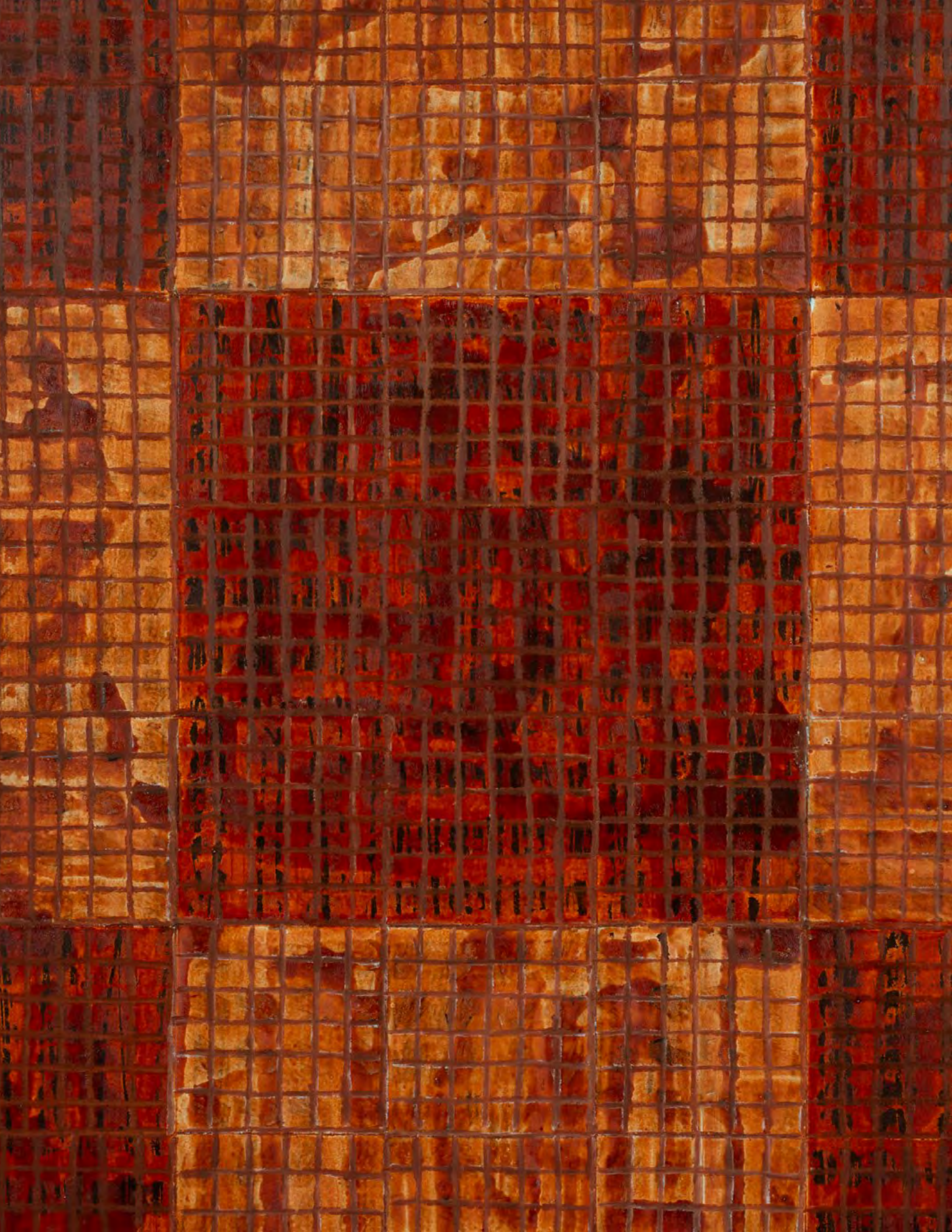
Rawness:Dancing:With:Intellect

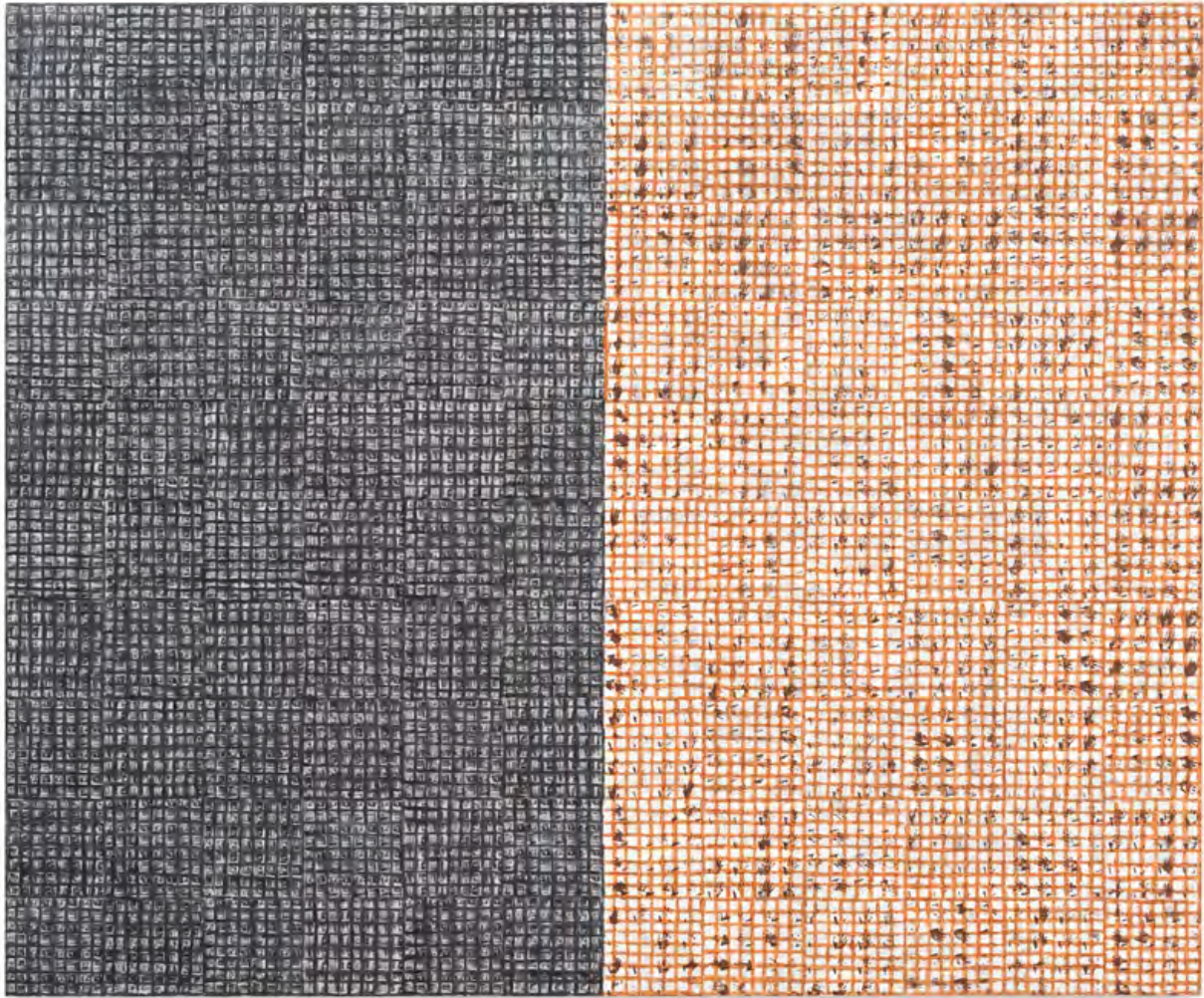
2024. Paintstick, ink and paper on board

48 x 72 inches (121.9 x 182.8 cm)

LM37068

\$250,000 USD





MCARTHUR BINION

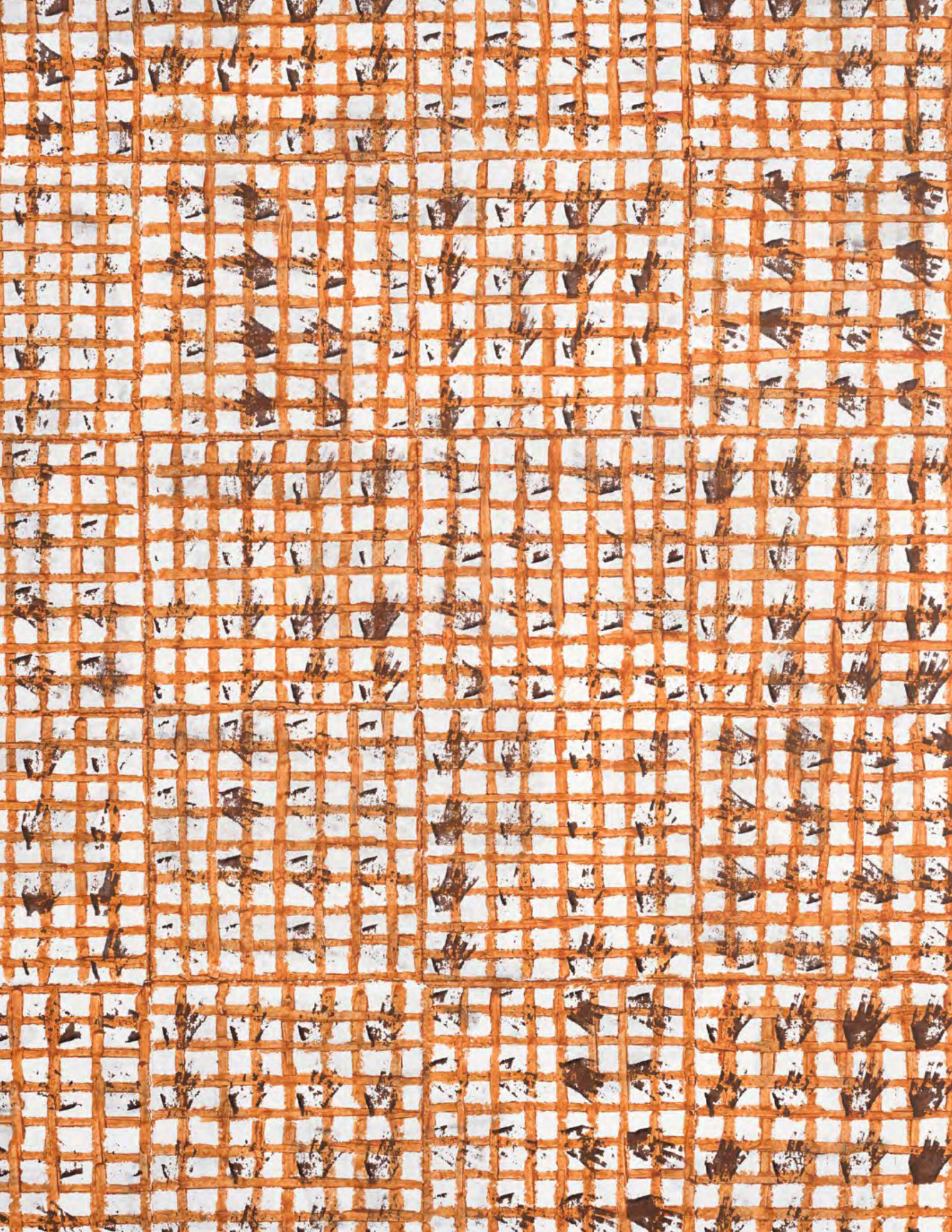
hand:work

2018. Oil paint stick and paper on board

40 x 48 x 2 inches (101.6 x 121.92 x 5.08 cm)

LM29241

Please inquire



HEIDI BUCHER



HEIDI BUCHER

Door of the Borg, detail

1976. Textiles, latex, glue, and mother of pearl pigments

52.5 x 41.5 x 2 inches (133.35 x 105.41 x 5.08 cm)

LM29506

Please inquire



LEE BUL



LEE BUL

Perdu 197 CXCVII

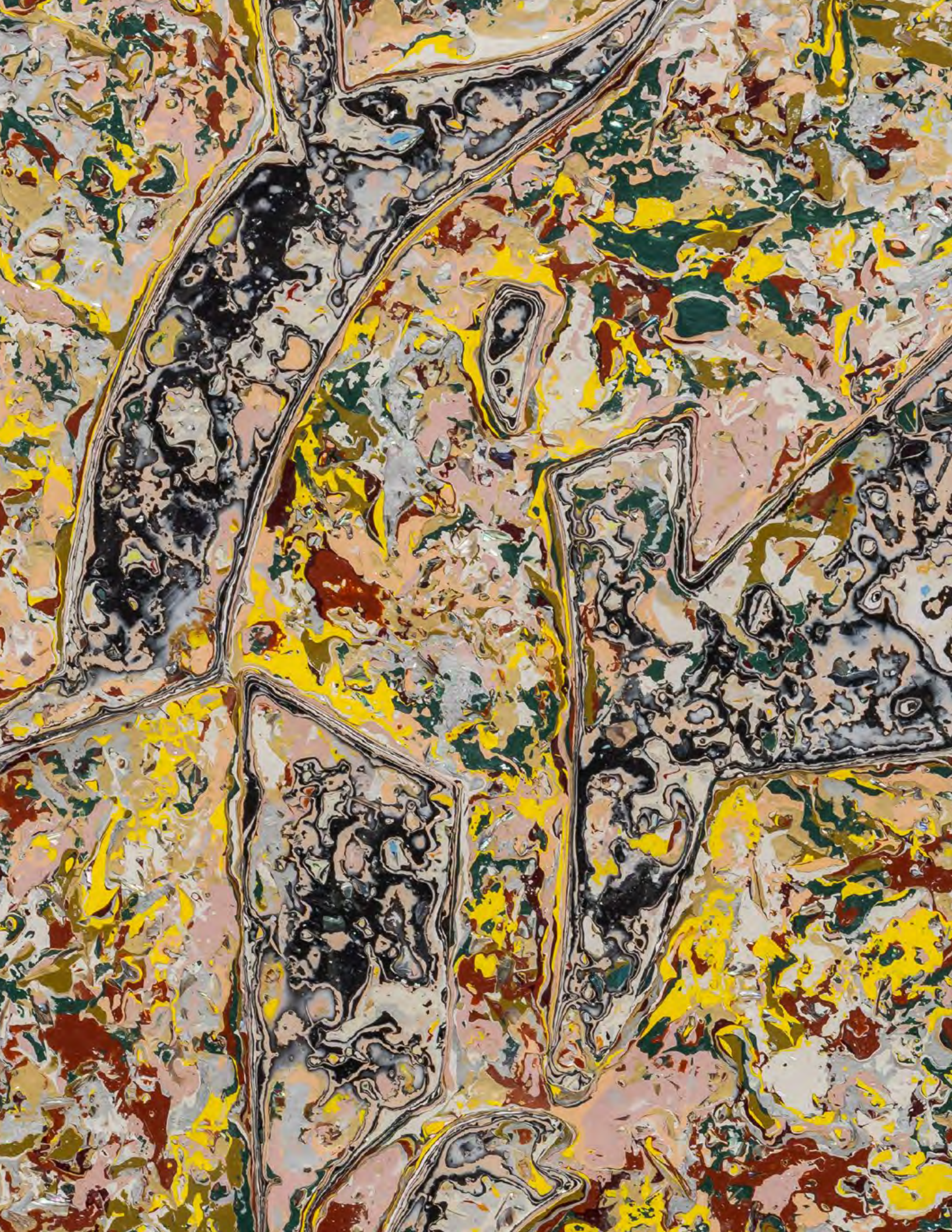
2024. Mother-of-pearl, acrylic paint on wooden base panel, stainless steel frame

63 x 43.3 x 2.4 inches (160 x 110 x 6 cm)

Artwork can be hung in any orientation

LM37110

\$190,000 USD





LEE BUL

Perdu XXXI

2019. Mother-of-pearl, acrylic paint on wooden base panel, steel frame

74.61 x 32.68 x 2.56 inches (189.5 x 83 x 6.5 cm)

LM36632

\$210,000 USD



DOMINIC CHAMBERS



DOMINIC CHAMBERS

Thunderscape #1 (When I am Among the Trees)

2024. Oil on linen

80 x 92 inches (203.2 x 233.7 cm)

LM37136

\$100,000 USD





DOMINIC CHAMBERS

The Zone

2023. Oil on linen

80 x 110.5 x 2 inches (203.2 x 280.7 x 5.08 cm)

LM36584

\$125,000 USD



BILLY CHILDISH



BILLY CHILDISH

horseman

2023. Oil and charcoal on linen

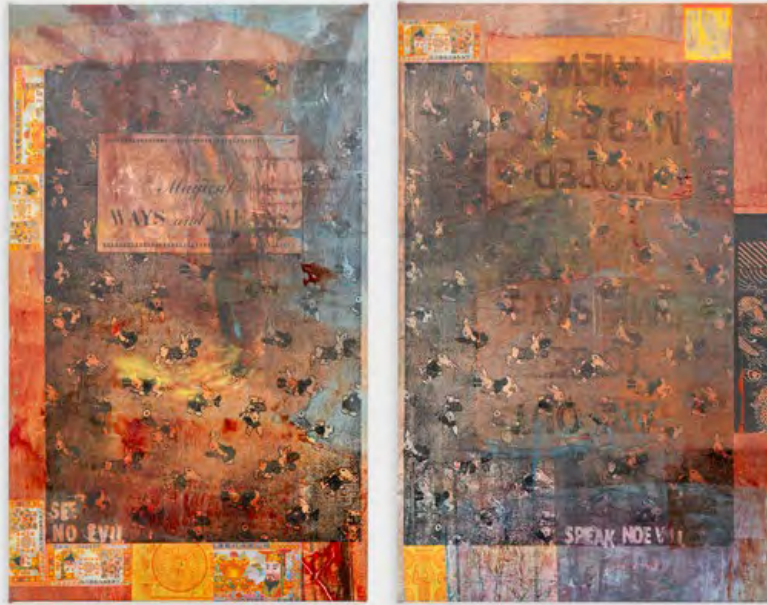
72.05 x 72.05 inches (183 x 183 cm)

LM36673

€70,000 EUR



MANDY EL-SAYEGH



MANDY EL-SAYEGH

Magical Ways & Means

2024. Oil and acrylic on linen with collaged and silkscreened elements and joss paper

55.12 x 71.65 x 1.77 inches (140 x 182 x 4.5 cm), overall

LM36710

\$65,000 USD

天地通銀行有限公司



源源發

路路通

天地通銀行有限公司

天福源

萬代富

貴

8000000000

天地通用紙幣

圖

刺

價

圖





MANDY EL-SAYEGH

Burning Square (HTSI, the fix)

2024. Oil and acrylic on canvas with collaged and silkscreened elements and gold leaf

74.75 x 47.25 inches (190 x 120 cm)

LM37181

\$65,000 USD



OPENING SHOT



MANDY EL-SAYEGH

Burning Square (Tiffany #3)

2024. Oil and acrylic on canvas with collaged and silkscreened elements, joss paper and gold leaf

89.375 x 57.875 inches (227 x 147 cm)

LM37193

\$75,000 USD

THIRTY THOUSAND

I WISH

GRATEFUL

行銀通算

THE BANK NOTE



Schlumberger by Tiffany

TIFFANY & CO

TRACEY EMIN



TRACEY EMIN

The End of Me

2012. Embroidered cotton

70.06 x 63.75 inches (178 x 162 cm)

LM37178

Please inquire



TODD GRAY



TODD GRAY

Nike D.O. / Versailles

2021. Three archival pigment prints in artist's frames, UV laminate

66.5 x 81.5 x 5 inches (168.9 x 207 x 12.7 cm)

LM36142

\$90,000 USD



TODD GRAY

the hidden order of the whole

2021. Five archival pigment prints in artist's frames, UV laminate

80.5 x 113.125 x 2.75 inches (204.5 x 287.3 x 7 cm)

LM36015

\$120,000 USD

TAMMY NGUYEN



TAMMY NGUYEN

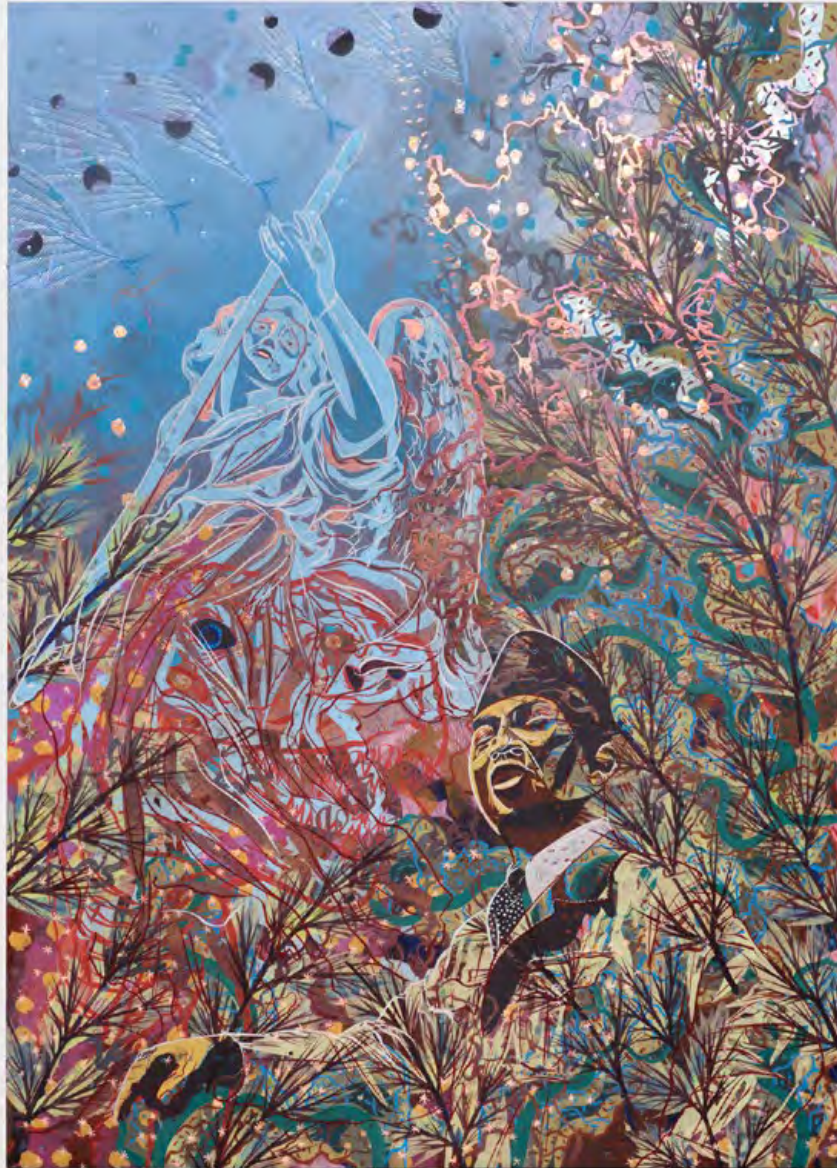
I Pray to God That This Asian-African Conference Succeeds

2024. Watercolor, vinyl paint, pastel, silkscreen printing, rubber stamping, hot stamping, and metal leaf on paper stretched over wood and gator board panel

57 x 44 inches (144.8 x 111.8 cm)

LM36683

\$55,000 USD



TAMMY NGUYEN

Release the Immense Forces

2024. Watercolor, vinyl paint, pastel, silkscreen printing, rubber stamping, hot stamping, and metal leaf on paper stretched over wood and gator board panel

84 x 60 inches (213.4 x 152.4 cm)

LM36832

\$95,000 USD



ARCMANORO NILES



ARCMANORO NILES

We Used To Go Out in a Oldsmobile (For a Moment All We Did Would Never End)

2024. Oil and acrylic on canvas

108 x 108 x 1.35 inches (274.3 x 274.3 x 3.42 cm)

LM35828

\$195,000 USD



CATHERINE OPIE



CATHERINE OPIE

Untitled #3 (Norway Mountain)

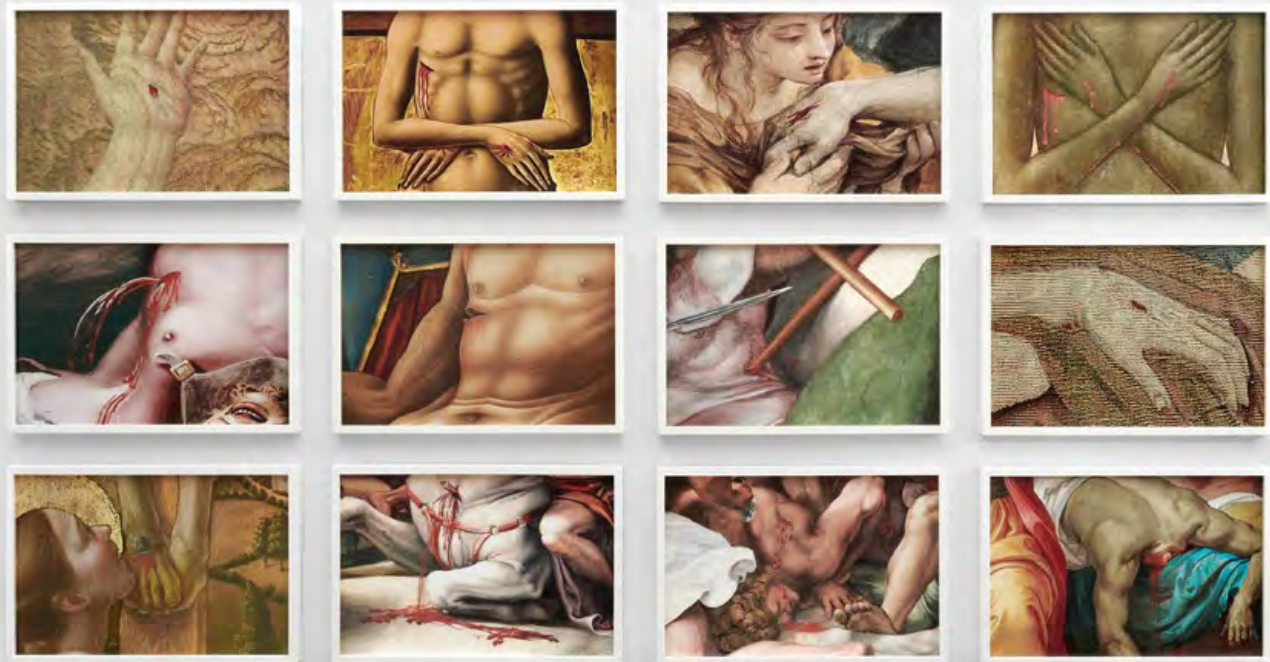
2024. Pigment print

80 x 61 x 3 inches (203.2 x 154.94 x 7.62 cm), framed

Edition of 5

LM37153

\$60,000 USD



CATHERINE OPIE

Blood Grid #3

2023. Pigment print

12 prints, each: 11.75 x 17.25 x 1.5 inches (29.84 x 43.81 x 3.81), framed

39.25 x 75 x 1.5 inches (99.69 x 190.5 x 3.81 cm), overall

Edition of 5

LM35469

\$75,000 USD

OREN PINHASSI



OREN PINHASSI

Widow's Peak

2023. Steel, sand, burlap, polymer, rock and pigeon spikes

95.7x 9.8 x 18.1 inches (243 x 25 x 46 cm)

LM37194

\$24,000 USD

LARI PITTMAN



LARI PITTMAN

Nocturnes, #1

2015. Cel-vinyl, lacquer spray over gessoed canvas, over wood panel

72.01 x 65.98 inches (182.9 x 167.6 cm)

LM36305

\$250,000 USD



LARI PITTMAN

Nocturnes, #6

2015. Cel-vinyl, lacquer spray over gessoed canvas, over wood panel

24.125 x 18 inches (61.3 x 45.7 cm)

LM36889

\$55,000 USD



LARI PITTMAN

Nocturnes, #8

2015. Cel-vinyl, lacquer spray over gessoed canvas, over wood panel

24.125 x 18 inches (61.3 x 45.7 cm)

LM36891

\$55,000 USD

ALEX PRAGER



ALEX PRAGER

Hollywood (Night)

2024. Archival pigment print

60.5 x 70 x 2.25 inches (153.67 x 177.8 x 5.7 cm), framed

Edition of 6

LM36756

\$55,000 USD

ROBIN RHODE



ROBI RHODE

The Lightning Bird

2022. C-print

4 panels, each: 24.65 x 32.52 x 1.5 inches (62.6 x 82.6 x 3.81 cm), framed

51.26 x 67.01 x 1.5 inches (130.2 x 170.2 x 3.81 cm), overall framed

Edition of 5

LM34097

€55,000 EUR

DAVID SALLE



DAVID SALLE

Tree of Life, Bridge Game

2023. Oil on linen

79.75 x 55.63 x 2.63 inches (202.56 x 141.3 x 6.7 cm)

LM35967

\$325,000 USD



DAVID SALLE

Pastoral with Yellow Star

1999. Oil and acrylic on canvas and linen

72 x 108 inches (182.9 x 274.3 cm)

LM1825

Please Inquire

MICKALENE THOMAS



MICKALENE THOMAS

Portrait of Naomi #1

2011. Rhinestone, acrylic paint and oil enamel on wood panel

60 x 48 inches (152.4 x 121.9 cm)

LM15524

Please Inquire

CECILIA VICUÑA



CECILIA VICUÑA

La migranta

2024. Oil on canvas

28.5 x 36 x 1 inches (72.4 x 91.4 x 2.5 cm)

LM37171

Please inquire



LIU WEI



LIU WEI

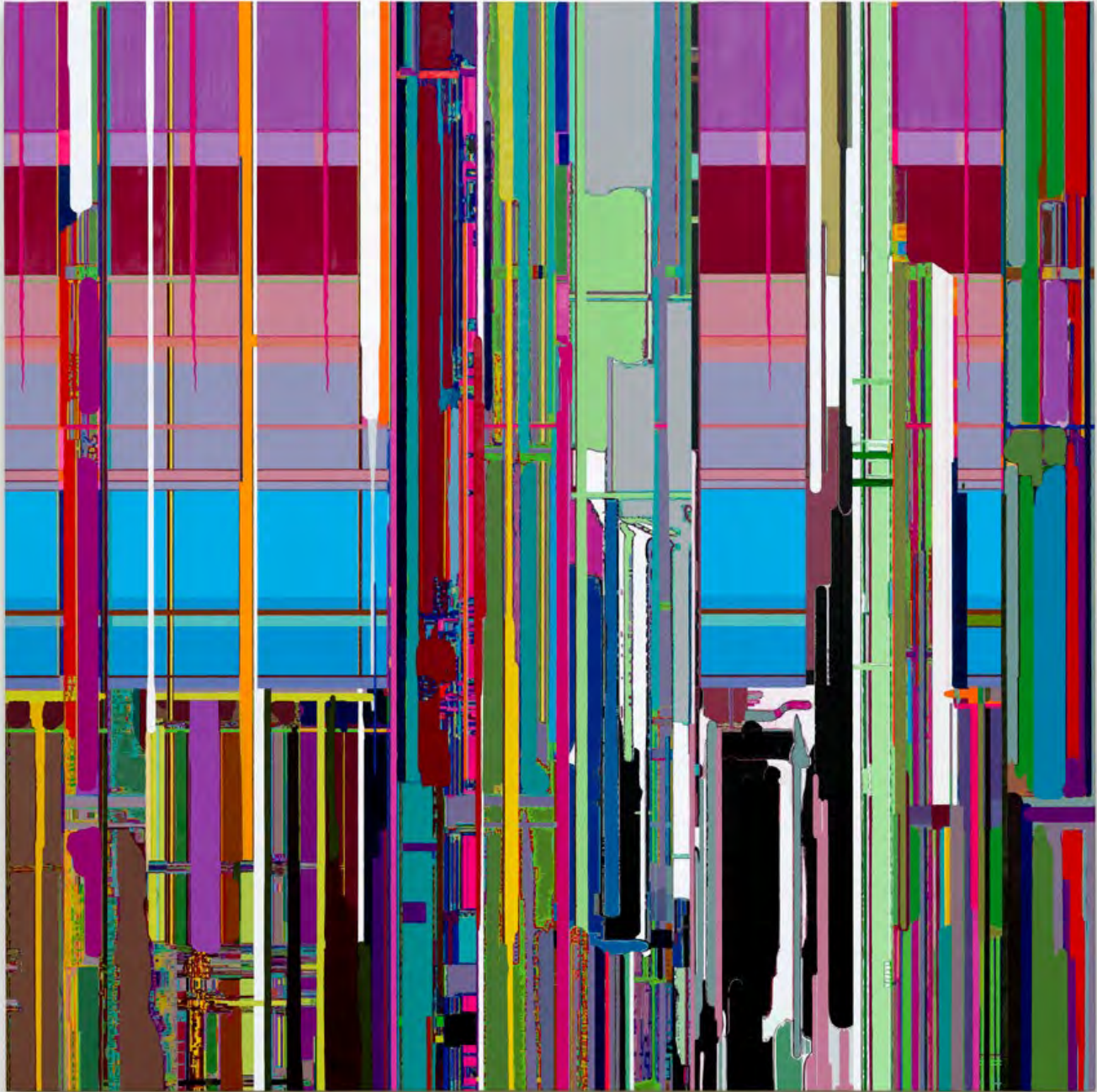
Renyin 003

2024. Oil on canvas

62.99 x 78.74 inches (160 x 200 cm)

LM36943

\$360,000 USD



LIU WEI

Purple Air 2017 No. 7

2017. Oil on canvas

98.43 x 98.43 inches (250 x 250 cm)

LM25842

Please inquire

LIZA LOU

UNLIMITED

As part of the fair's Unlimited sector, Lehmann Maupin will present Liza Lou's landmark installation work *Security Fence* (2005). Crafted entirely from glass beads on steel and razor wire, Lou's to-scale installation reconstructs exterior prison security measures—a chain link fence with barbed wire on top. Calling notions of security and fragility into question, Lou's elaborate handmade work introduces touch and contact into a space of isolation, lending care and dignity to an otherwise dehumanizing and industrial structure.

In September, Lou will debut an all new body of work in New York, spanning the gallery's Chelsea location. In October, the Brooklyn Museum will debut the permanent installation of Lou's *Trailer* (1998—2000), which the institution recently acquired.





LIZA LOU

Security Fence

2005. Glass beads on steel and razor wire

132 x 156 x 156 inches (335.3 x 396.2 x 396.2 cm)

LM30496

\$500,000 USD

MANDY EL-SAYEGH

PARCOURS

Mandy El-Sayegh will debut a new installation for the fair's Parcours initiative, which organizes public art projects outside of the fair in the city's old town. *Body Promise* will transform two spaces in the Clarastrasse shopping center, turning the space into an immersive environment through printed matter on the walls and floors and several large-scale paintings.

Clarastrasse
Greifengasse 26

Monday, June 10, 7:15pm
Wednesday, June 12, 7:15pm
Friday, June 14, 7:15pm



ABOUT LEHMANN MAUPIN

Rachel Lehmann and David Maupin co-founded Lehmann Maupin in 1996 in New York. Since inception, Lehmann Maupin has served as a leading contemporary art gallery with locations in the U.S., Europe, and Asia. For over 25 years, Lehmann Maupin has been instrumental in introducing international artists in new geographies and building long-lasting curatorial relationships. Known for championing diverse voices, the gallery's program proudly features artists whose work challenges notions of identity and shapes international culture. Today, the gallery has permanent locations in New York, Seoul, and London, as well as team members based in Hong Kong, Shanghai, Singapore, and Palm Beach. In recent years, with growing opportunities in new markets, the gallery has opened seasonal spaces in Aspen, Palm Beach, Taipei, and Beijing.

NEW YORK

501 West 24th Street
New York, NY 10011
1 212 255 2923
newyork@lehmannmaupin.com

SEOUL

213 Itaewon-ro, Yongsan-gu
Seoul, Korea 04349
82 2 725 0094
seoul@lehmannmaupin.com

LONDON

1 Cromwell Place
South Kensington, London SW7 2JE
44 20 8057 1880
london@lehmannmaupin.com