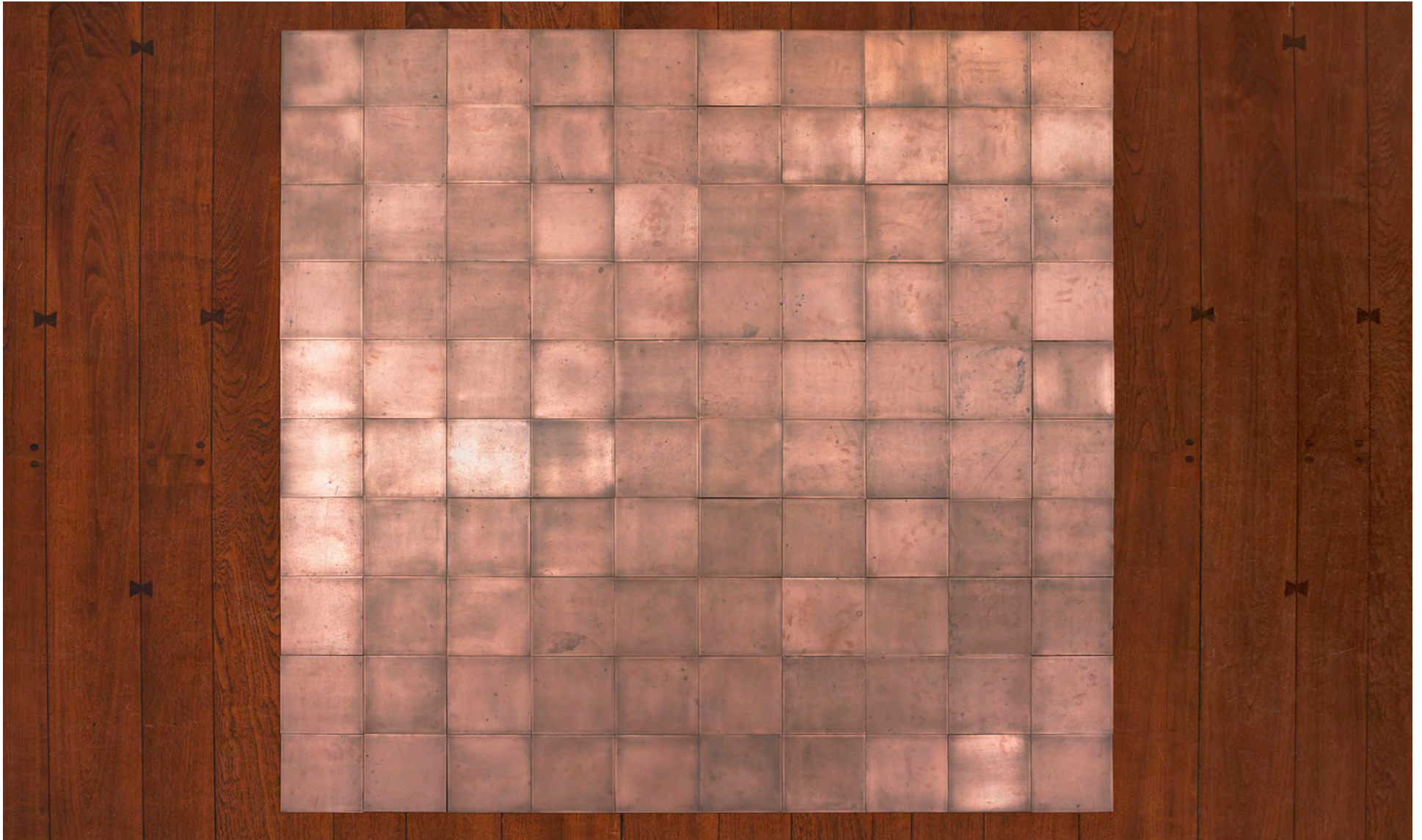


MNUCHIN GALLERY

ART BASEL 2024
Booth F5



CARL ANDRE

100 Copper Square

1968

copper

100-unit square (10 x 10)

each: $\frac{3}{16} \times 7 \frac{13}{16} \times 7 \frac{13}{16}$ inches (.5 x 19.8 x 19.8 cm)

overall: $\frac{3}{16} \times 78 \frac{11}{16} \times 78 \frac{11}{16}$ inches (.5 x 199.9 x 199.9 cm)



GEORG BASELITZ
Untitled
1983
watercolor on paper
24 x 17 inches (61 x 43.2 cm)



JOHN CHAMBERLAIN

Arch Brown

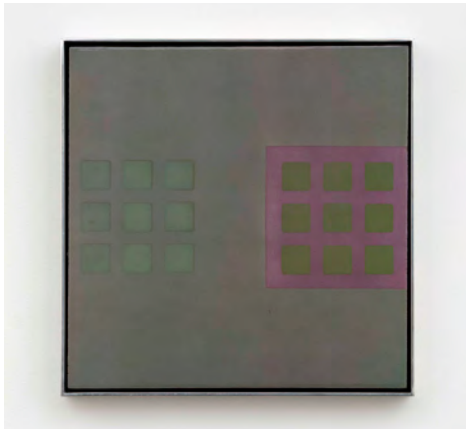
1962

painted steel

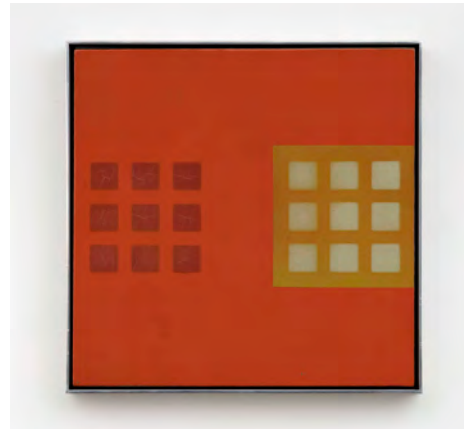
37 x 38 x 29 inches (94 x 96.5 x 73.7 cm)

MNUCHIN GALLERY

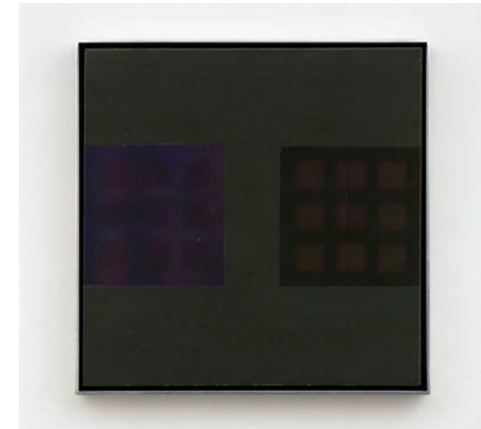
JOHN CHAMBERLAIN



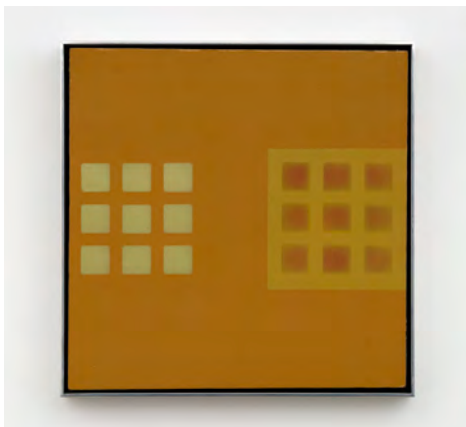
JOHN CHAMBERLAIN
Dion
1963
Auto lacquer, metal flake on Formica
12 x 12 inches (30.5 x 30.5 cm)



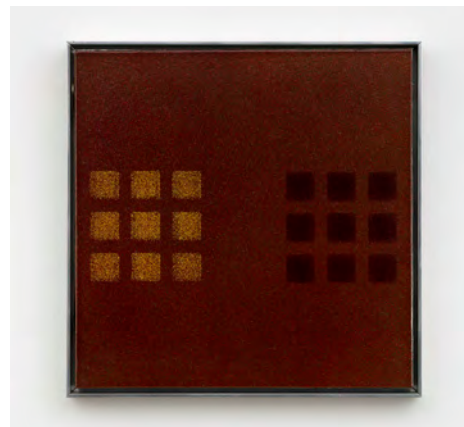
JOHN CHAMBERLAIN
Orlons
1963
Auto lacquer, metal flake on Formica
12 x 12 inches (30.5 x 30.5 cm)



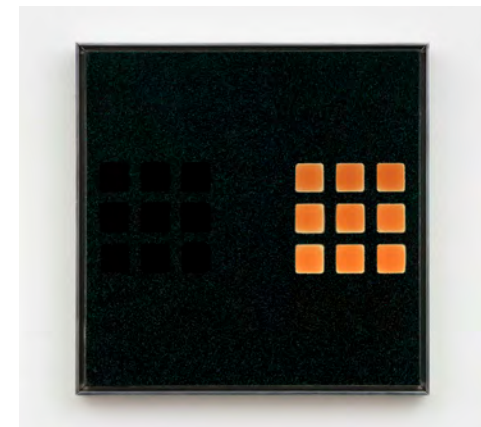
JOHN CHAMBERLAIN
Joey Dee
1963
Auto lacquer, metal flake on Formica
12 x 12 inches (30.5 x 30.5 cm)



JOHN CHAMBERLAIN
Elvis
1963
Auto lacquer, metal flake on Formica
12 x 12 inches (30.5 x 30.5 cm)



JOHN CHAMBERLAIN
Marquees
1964
Auto lacquer, metal flake on Formica
12 x 12 inches (30.5 x 30.5 cm)



JOHN CHAMBERLAIN
U.S. Bonds
1965
Auto lacquer, metal flake on Formica
12 x 12 inches (30.5 x 30.5 cm)



JOHN CHAMBERLAIN
SWEETSWEETHEART
1999

painted and chromium-plated steel
16 x 18 x 11 1/2 inches (40.6 x 45.7 x 29.2 cm)



JOHN CHAMBERLAIN

CLAPRAP

2007

painted and chromed steel

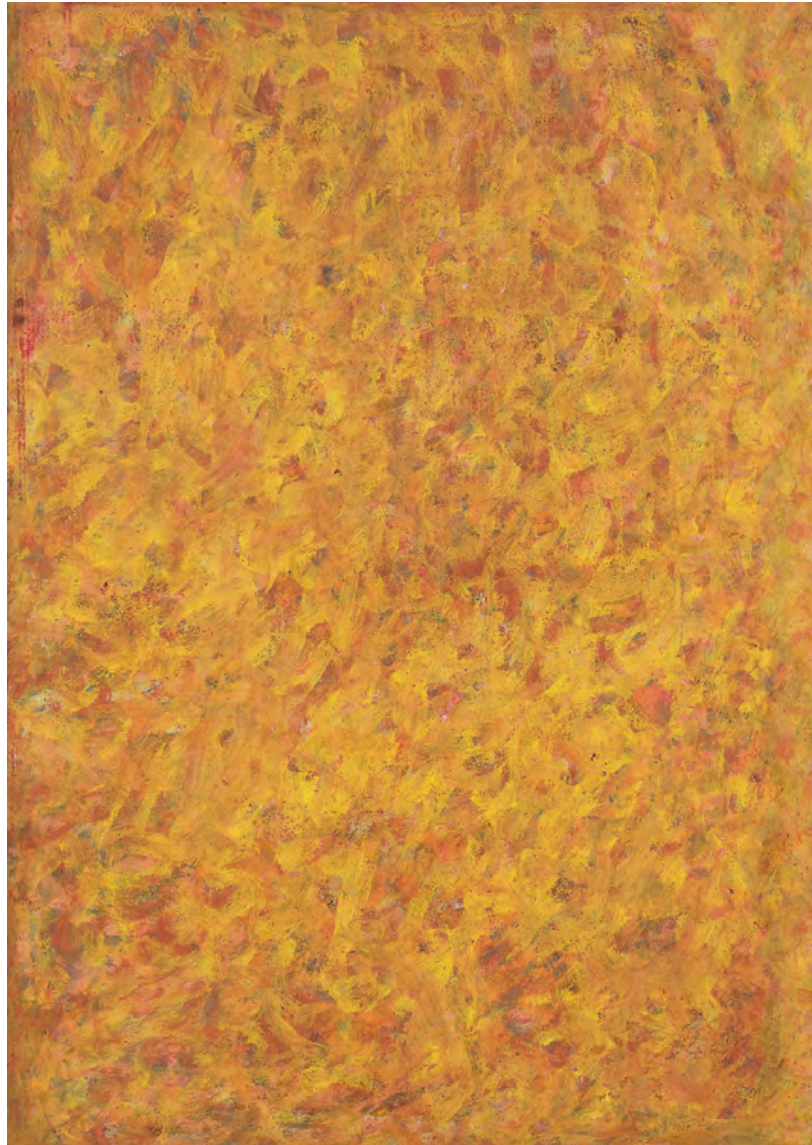
12 1/2 x 15 x 12 inches (31.8 x 38.1 x 30.5 cm)



JOHN CHAMBERLAIN
CONEY ISLAND DORIC
2008
painted and chrome-plated steel
16 3/4 x 18 x 15 inches (42.6 x 45.7 x 38.1 cm))



BEAUFORD DELANEY
Untitled
circa 1958
oil on canvas
47 x 24 inches (119.4 x 61 cm)



BEAUFORD DELANEY

Untitled (Composition in Yellow, Orange and Red)
circa 1958-59

oil on paper mounted on linen canvas
53 x 38 inches (134.6 x 96.5 cm)



RICHARD DIEBENKORN
Ingleside II
1963
oil on canvas
29 3/4 x 70 1/2 inches (75.6 x 179.1 cm)



SAM FRANCIS
Untitled
1958
watercolor on paper
42 x 29 inches (106.7 x 73.7 cm)



SAM FRANCIS

Untitled

1958

watercolor and gouache on paper

22 3/8 x 30 inches (56.8 x 76.2 cm)



SAM FRANCIS
Untitled
circa 1958
gouache on paper
40 1/8 x 26 1/2 inches (101.9 x 67.3 cm)



ARSHILE GORKY

Untitled

1945

graphite and crayon on paper

12 3/4 x 17 5/16 inches (32.4 x 44 cm)



PHILIP GUSTON

The Day

1964

oil on canvas

77 x 80 inches (195.5 x 203.2 cm)



DAVID HAMMONS

African-American Flag

1990

dyed cotton

85 3/4 x 55 5/8 inches (217.8 x 141.3 cm)

Edition 1/5



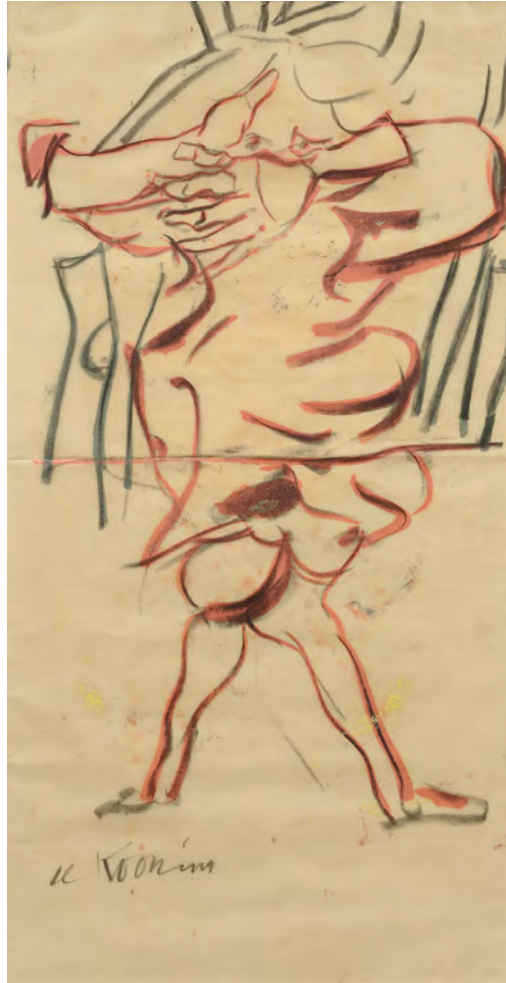
DAVID HAMMONS

Untitled

2017

acrylic and tarp on canvas

canvas size: 64 x 46 inches (162.6 x 116.8 cm)



WILLEM DE KOONING
Untitled
circa 1965-66
charcoal and oil on vellum
35 3/4 x 18 5/8 inches (90.8 x 47.3 cm)



WILLEM DE KOONING
Untitled III
1983
oil on canvas
88 x 77 inches (223.5 x 195.6 cm)



WILLEM DE KOONING
Untitled VI
1986
oil on canvas
77 x 88 inches (195.6 x 223.5 cm)



LEE KRASNER

Twelve Hour Crossing, March Twenty-first
circa 1971 - 81

oil and paper collage on canvas
68 x 75 inches (172.7 x 190.5 cm)



JULIE MEHRETU
Mind Breath Drawing (26)
2010
graphite on paper
25 x 35 7/8 inches (63.4 x 91 cm)



JOAN MIRÓ
Personnage
executed on August 23, 1935
gouache and graphite on paper
14 5/8 x 11 7/8 inches (371 x 30 cm)



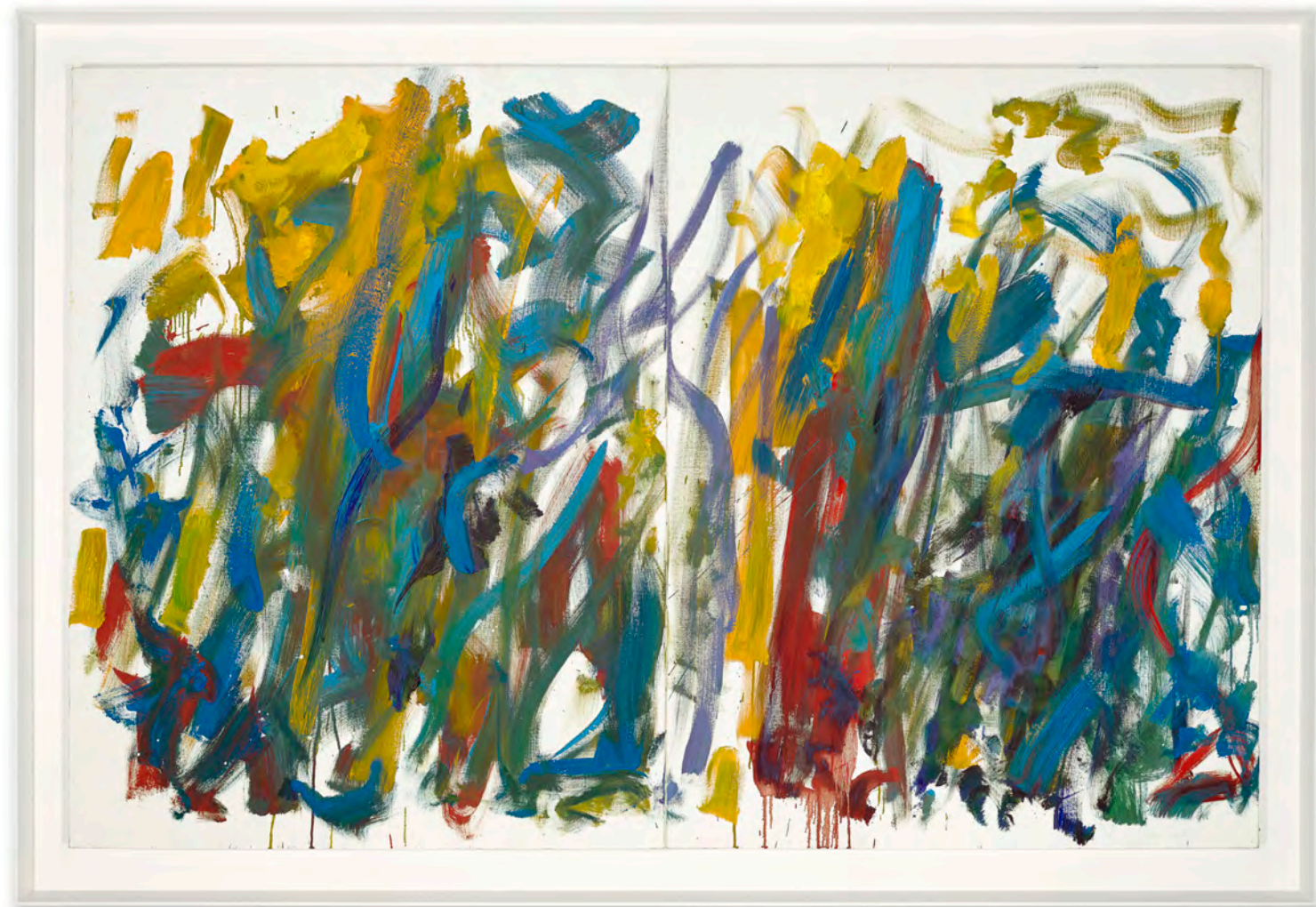
JOAN MITCHELL

Untitled

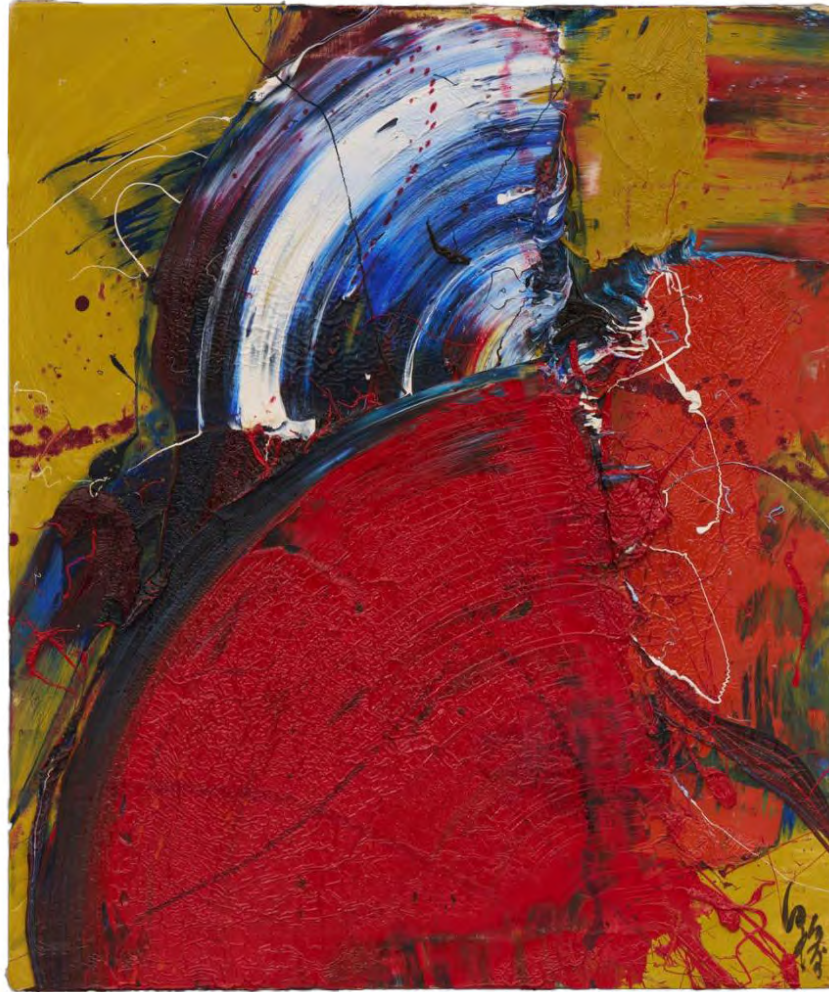
1983

pastel on paper

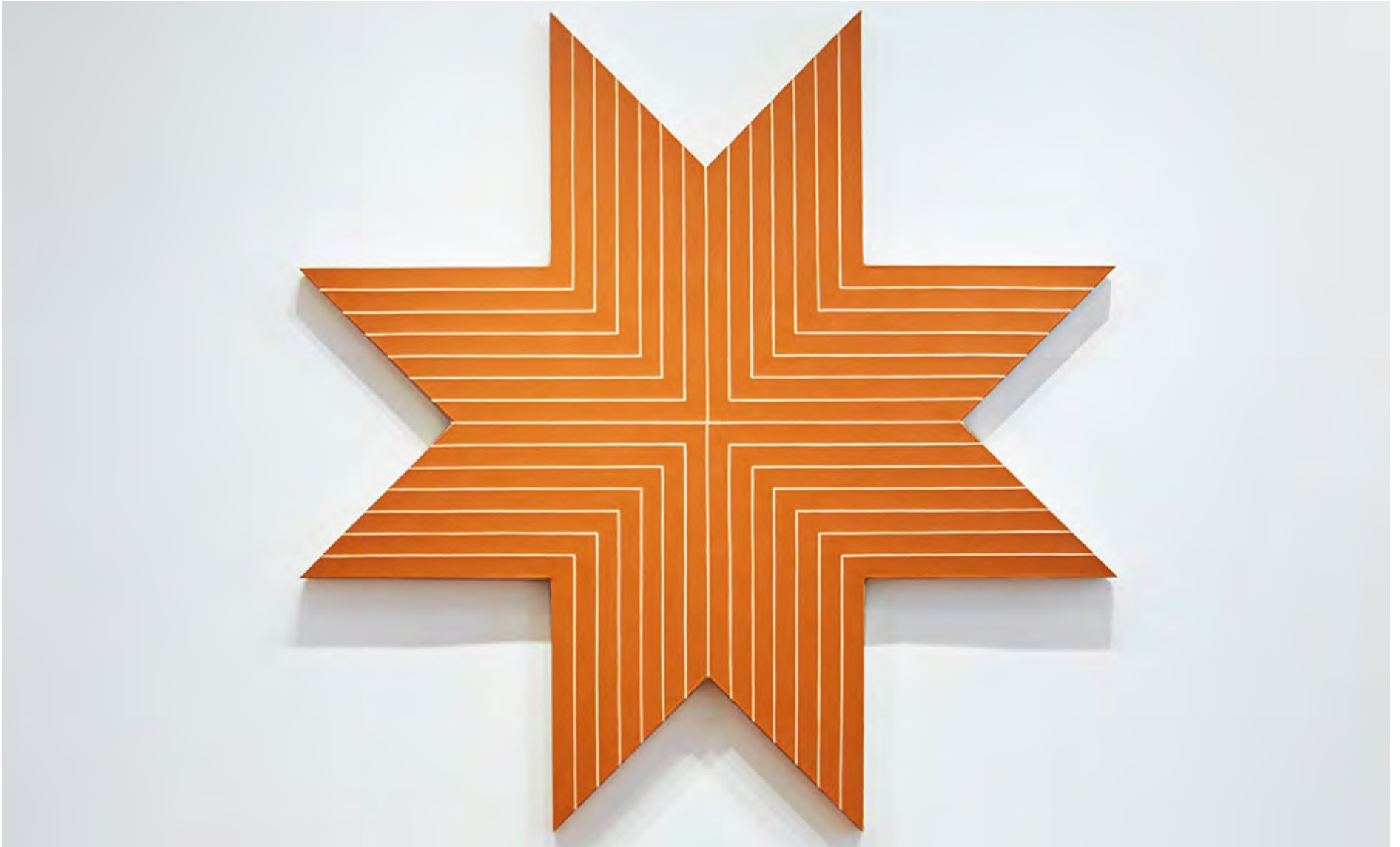
22 3/4 x 15 1/2 inches (57.8 x 39.4 cm)



JOAN MITCHELL
Sunflowers
circa 1991
oil on canvas, diptych
51 x 76 1/4 inches (129.5 x 193.7 cm)



KAZUO SHIRAGA
Work with Two Fans
1966
oil on canvas
28 1/2 x 23 3/4 inches (72.4 x 60.3 cm)



FRANK STELLA
Port Tampa City
1963
red lead on canvas
102 x 102 inches (259.1 x 259.1 cm)



STURTEVANT

Warhol's Marilyn Monroe

1985

acrylic and screenprint inks on canvas

18 x 15 inches (45.7 x 38.1 cm)



BRADLEY WALKER TOMLIN
Number 10
1949
oil on canvas
22 x 34 inches (55.9 x 86.4 cm)