



FRIEZE LOS ANGELES

February 20–23, 2025

Santa Monica Airport
Booth E8

TINA KIM GALLERY

Works by

Pacita Abad

Ghada Amer

Davide Balliano

Ha Chong-Hyun

Suki Seokyeong Kang

Maia Ruth Lee

Mire Lee

Lee ShinJa

Park Seo-Bo

Tania Pérez Córdova

Jennifer Tee

Jane Yang D'Haene

TINA KIM GALLERY

Frieze LA 2025 Checklist

Pacita Abad (1946–2004)



Red Mask on Cloth 4, 1985
Mirrors, buttons, and threads
stitched on silk screened cloth
Dimensions:
18 x 14 inches
45.7 x 35.6 cm
Framed Dimensions:
22 7/8 x 18 5/8 inches
58.1 x 47.3 cm
#14045

\$45,000



Freedom From Illusion, 1984
Oil, painted cloth on silk
screened, stitched and padded
canvas
Dimensions:
75 x 81 inches
190.5 x 205.7 cm
#14192

Price upon request



Stir Fry, 2001
Oil and painted cloth stitched on
canvas
Dimensions:
6 x 6 inches
15 x 15 cm
Framed Dimensions:
12 1/2 x 12 1/2 x 2 inches
31.8 x 31.8 x 5.1 cm
Signed on face, work details on
reverse
#14929

\$15,000



39°C, 2003

Colored paper pulp and mixed media collage on handmade STPI paper

Dimensions:

66 x 52 inches

167.6 x 132.1 cm

Framed Dimensions:

72 1/4 x 58 1/2 x 3 inches

183.5 x 148.6 x 7.6 cm

Signed and dated on face

#15490

\$65,000



Black-striped fish, 2000

Oil and sequins stitched on canvas

Dimensions:

32 x 36 inches

81 x 92 cm

#15514

\$60,000



Magenta-striped fish, 2000

Oil and sequins stitched on canvas

Dimensions:

25 x 36 inches

64 x 92 cm

Framed Dimensions:

27 x 38 x 2 inches

68.6 x 96.5 x 5.1 cm

#15521

\$60,000



Orange-striped fish II, 2000

Oil and sequins stitched on canvas

Framed Dimensions:

29 1/2 x 41 1/4 x 2 inches

74.9 x 104.8 x 5.1 cm

#15524

\$60,000



White-striped fish, 2000
Oil and sequins stitched on
canvas
Dimensions:
32 x 36 inches
81 x 92 cm
Framed Dimensions:
26 x 38 x 2 inches
66 x 96.5 x 5.1 cm
#15528

\$60,000

Ghada Amer (b. 1963)



"WITCHES" Edition 1, 2023
Embroidered muslin
Display Dimensions:
59 x 92 x 2 inches
149.9 x 233.7 x 5.1 cm
Edition 1/8, 4AP
Signed, numbered, and dated on
reverse
#15121.1

\$125,000



GIRLS IN WHITE AND GOLD,
2024
Cast bronze with white patina, 21
karat gold leaf
Dimensions:
15 x 19 x 11 inches
38.1 x 48.3 x 27.9 cm
Edition 2/6
#15781.2

\$90,000

Davide Balliano (b. 1983)



UNTITLED_0280, 2023
Plaster, gesso, and varnish on
linen
Framed Dimensions:
24 x 20 3/4 x 1 3/4 inches
61 x 52.7 x 4.4 cm
#15143

\$12,000



UNTITLED_0326, 2024
Acrylic, plaster, and varnish on
linen
Framed Dimensions:
24 5/8 x 24 5/8 x 1 7/8 inches
62.5 x 62.5 x 4.8 cm
#16009

\$14,000

A portion of the
sales from this work
will be donated to
LA fire relief.



UNTITLED_0328, 2025
Acrylic, plaster, and varnish on
linen
Dimensions:
48 x 48 inches
121.9 x 121.9 cm
Framed Dimensions:
52 1/2 x 52 7/8 x 1 3/4 inches
133.4 x 134.3 x 4.4 cm
#16011

\$29,000

Ha Chong-Hyun (b. 1935)



Conjunction 24-12, 2024
Oil on hemp cloth
Framed Dimensions:
53 1/8 x 40 x 3 inches
135 x 101.5 x 7.5 cm
Signed and work details on
reverse
#15744

\$250,000



Conjunction 22-92, 2022
Oil on hemp cloth
Framed Dimensions:
64 5/8 x 52 1/8 x 2 1/2 inches
164.1 x 132.4 x 6.4 cm
Signed and work details on
reverse
#15797

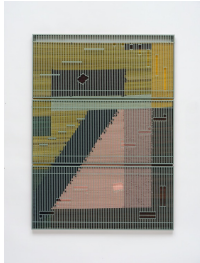
\$390,000



Conjunction 24-13, 2024
Oil on hemp cloth
Framed Dimensions:
52 1/8 x 39 x 2 1/4 inches
132.4 x 99.1 x 5.7 cm
Signed and work details on
reverse
#15803

\$250,000

Suki Seokyeong Kang (b. 1977)



Mat 120 x 165 #23-75, c.2023
Painted steel, woven dyed
Hwamunseok, nylon thread,
thread, wood frame, brass bolts,
leather scraps
68 1/2 x 49 5/8 x 2 inches
174 x 126 x 5 cm
#15315

\$80,000



Day #24-42, 2023-2024
Dyed wool, wood frame, thread
Dimensions:
21 5/8 x 15 3/4 x 2 1/2 inches
55 x 40 x 6 cm
Signed and dated verso
#15622

\$20,000



Day #24-52, 2023-2024
Dyed wool, wood frame, thread
Dimensions:
21 5/8 x 15 3/4 x 2 5/8 inches
55 x 40 x 6 cm
Signed and dated on reverse
#15625

\$20,000



Day #24-58, 2023-2024
Dyed wool, wood frame, thread
Dimensions:
65 7/8 x 48 7/8 x 2 1/2 inches
167.2 x 124 x 6 cm
Signed and dated on reverse
#15629

\$35,000

Maia Ruth Lee (b. 1983)



B.B.M 1-15, 2023
India ink on canvas
Framed Dimensions:
62 x 51 x 2 inches
157.5 x 129.5 x 5.1 cm
#14799

\$24,000



B.B.Lattice 1-1, 2025
Ink on canvas
Dimensions:
61 1/2 x 60 inches
156.2 x 152.4 cm
Framed Dimensions:
60 1/2 x 58 1/2 x 2 inches
153.7 x 148.6 x 5.1 cm
#16037

\$24,000

A portion of the sales
from this work
will be donated to LA
fire relief.

Mire Lee (b. 1988)



*Black Sun: Surface with many
holes, section #19, 2023*
Fabric and clay slip
Dimensions:
40 x 24 1/2 inches
101.6 x 62.2 cm
Framed Dimensions:
44 3/8 x 28 3/4 x 2 1/8 inches
112.7 x 73 x 5.4 cm
#15872

\$20,000

A portion of the sales
from this work
will be donated to LA
fire relief.



*Black Sun: Surface with many
holes, section #26, 2023*
Fabric and clay slip
Dimensions:
56 x 29 inches
142.2 x 73.7 cm
Framed Dimensions:
61 5/8 x 35 1/8 x 2 inches
156.5 x 89.2 x 5.1 cm
#15874

\$20,000

Tania Pérez Córdova (b. 1979)



A View to Keep An Eye On, 2024
Bronze poured into sand
Dimensions:
23 5/8 x 23 5/8 x 3/4 inches
60 x 60 x 2 cm
#15402

\$15,000



What Direct Sunlight Does, 2024
Bronze poured into sand
Dimensions:
39 3/8 x 27 1/2 x 3/4 inches
100 x 70 x 2 cm
#15422

\$20,000

A portion of the sales from this work will be donated to LA fire relief.

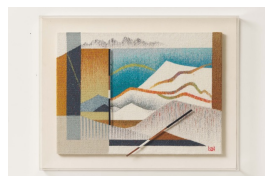
Park Seo-Bo (1931–2023)



Ecriture No. 16-21, 2021
Relief Print with Korean Hanji Paper
Framed Dimensions:
53 3/4 x 42 x 2 inches
136.5 x 106.7 x 5.1 cm
Edition 13/30
Signed, dated, and titled on face
#13906.13

\$90,000

Lee ShinJa (b. 1930)



Spirit of Mountain, 1996
Wool thread, metal; tapestry
Framed Dimensions:
30 x 38 5/8 x 3 3/8 inches
76.2 x 98.1 x 8.6 cm
Signed on face
#15734

\$70,000



Spirit of Mountain, 1998
Wool, synthetic thread, and metal; tapestry
Framed Dimensions:
31 1/2 x 43 x 3 inches
80 x 109.2 x 7.6 cm
Signed on face
#15736

\$70,000



Memory, 1985

\$100,000

Wool thread; tapestry
Framed Dimensions:
45 1/8 x 46 3/4 x 2 inches
114.6 x 118.7 x 5.1 cm
Signed on face
#15837



Conversation between Circles IV,
1973

Price upon request

Cotton, linen thread; tapestry
Left panel dimensions:
68 1/2 x 21 inches
175 x 55 cm
Right panel dimensions:
70 x 22 1/2 inches
177 x 57 cm
Each panel signed on face
#15868

Jennifer Tee (b. 1973)



Tampan Womb of Time, 2017

\$30,000

Tulip petal collage on paper
Dimensions:
67 x 65 inches
170 x 165 cm
Original,
#15538.Original

A portion of the sales
from this work
will be donated to LA
fire relief.



Tampan Tree of Life, Blossom,
2024

\$8,000

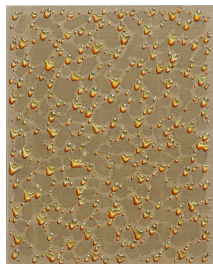
Tulip petal collage, piezography;
diptych
Framed Dimensions (each):
18 1/4 x 12 3/8 x 1 1/4 inches
46.4 x 31.4 x 3.2 cm
Edition OG
#15809.OG

Kim Tschang-Yeul (1929–2021)



Waterdrops, 1984
Oil and acrylic on canvas
Framed Dimensions:
26 1/4 x 19 1/2 x 2 inches
66.7 x 49.5 x 5.1 cm
Signed and dated on right edge
#13662

\$86,000



Waterdrops, 1979
Oil, acrylic, and tinfix on canvas
Dimensions:
36 1/4 x 28 3/4 inches
92 x 73 cm
Signed and dated on right edge
#13688

\$290,000

Jane Yang D'Haene



Untitled, 2024
Stoneware, porcelain, and glaze
Dimensions:
16 x 14 x 14 inches
40.6 x 35.6 x 35.6 cm
#16007

\$18,000



Untitled, 2024
Stoneware, porcelain, and glaze
Dimensions:
22 x 15 1/2 x 15 inches
55.9 x 39.4 x 38.1 cm
#16008

\$29,000



Untitled, 2024
Stoneware, porcelain, and glaze
Dimensions:
20 x 20 x 20 inches
50.8 x 50.8 x 50.8 cm
#16053

\$29,000

Pacita Abad

Freedom From Illusion, 1984

Oil, painted cloth on silk screened,
stitched and padded canvas
75 x 81 inches
190.5 x 205.7 cm

Price on request



TINA KIM GALLERY

Pacita Abad

Red Mask on Cloth 4, 1985

Mirrors, buttons, and threads
stitched on silk screened cloth
22 ⁷/₈ x 18 ⁵/₈ inches
58.1 x 47.3 cm
(Framed)

\$45,000



TINA KIM GALLERY

Pacita Abad

Orange-striped fish II, 2000

Oil and sequins stitched on canvas

29½ x 41¼ inches

74.9 x 104.8 cm

(Framed)

\$60,000



TINA KIM GALLERY

Pacita Abad

White-striped fish II, 2000

Oil and sequins stitched on canvas

26 x 38 inches

66 x 96.5 cm

(Framed)

\$60,000



TINA KIM GALLERY

Pacita Abad

39° C, 2001

Colored paper pulp and mixed media
collage on handmade STPI paper

72¼ x 58½ inches

183.5 x 148.6 cm

(Framed)

\$65,000



TINA KIM GALLERY

Ghada Amer



"WITCHES" Edition 1, 2023

Embroidered muslin
59 x 92 inches
149.9 x 233.7 cm

\$125,000

TINA KIM GALLERY

Ghada Amer

GIRLS IN WHITE AND GOLD, 2024

Cast bronze with white patina,
21 karat gold leaf
15 x 19 x 11 inches
38.1 x 48.3 x 27.9 cm

\$90,000



TINA KIM GALLERY

Daide Balliano

UNTITLED_0326, 2024

Acrylic, plaster, and varnish on linen
24 ⁵/₈ x 24 ⁵/₈ inches
62.5 x 62.5 cm cm

\$14,000

A portion of the sales from this work
will be donated to LA fire relief.



TINA KIM GALLERY

Daide Balliano

UNTITLED_0328, 2025

Plaster, gesso, and varnish on linen

48 x 48 inches

121.9 x 121.9 cm

\$29,000



TINA KIM GALLERY

Ha Chong-Hyun

Conjunction 22-92, 2022

Oil on hemp cloth
64⁵/₈ x 52¹/₈ inches
164.1 x 132.4 cm
(Framed)

\$390,000



TINA KIM GALLERY



TINA KIM GALLERY

Ha Chong-Hyun

Conjunction 24-12, 2024

Oil on hemp cloth
53 $\frac{1}{8}$ x 40 inches
135 x 101.5 cm
(Framed)

\$250,000



TINA KIM GALLERY

Ha Chong-Hyun

Conjunction 24-13, 2024

Oil on hemp cloth
53 $\frac{1}{8}$ x 39 inches
132.4 x 99.1 cm

\$250,000



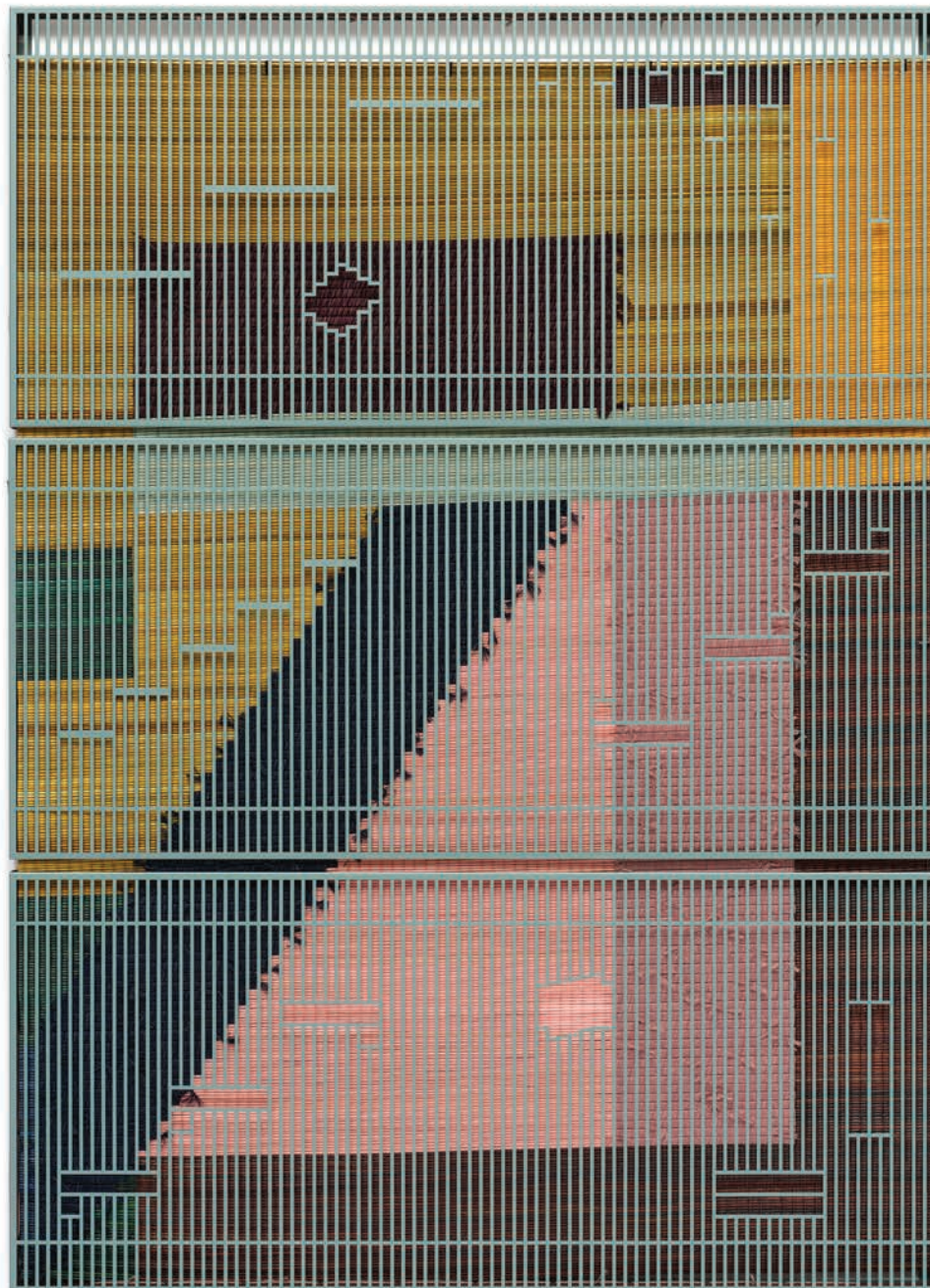
TINA KIM GALLERY

Suki Seokyeong Kang

Mat 120 x 165 #23-75, c.2023

Painted steel, woven dyed Hwamunseok,
nylon thread, thread, wood frame, brass
bolts, leather scraps
68½ x 49⅝ inches
174 x 126 cm

\$80,000



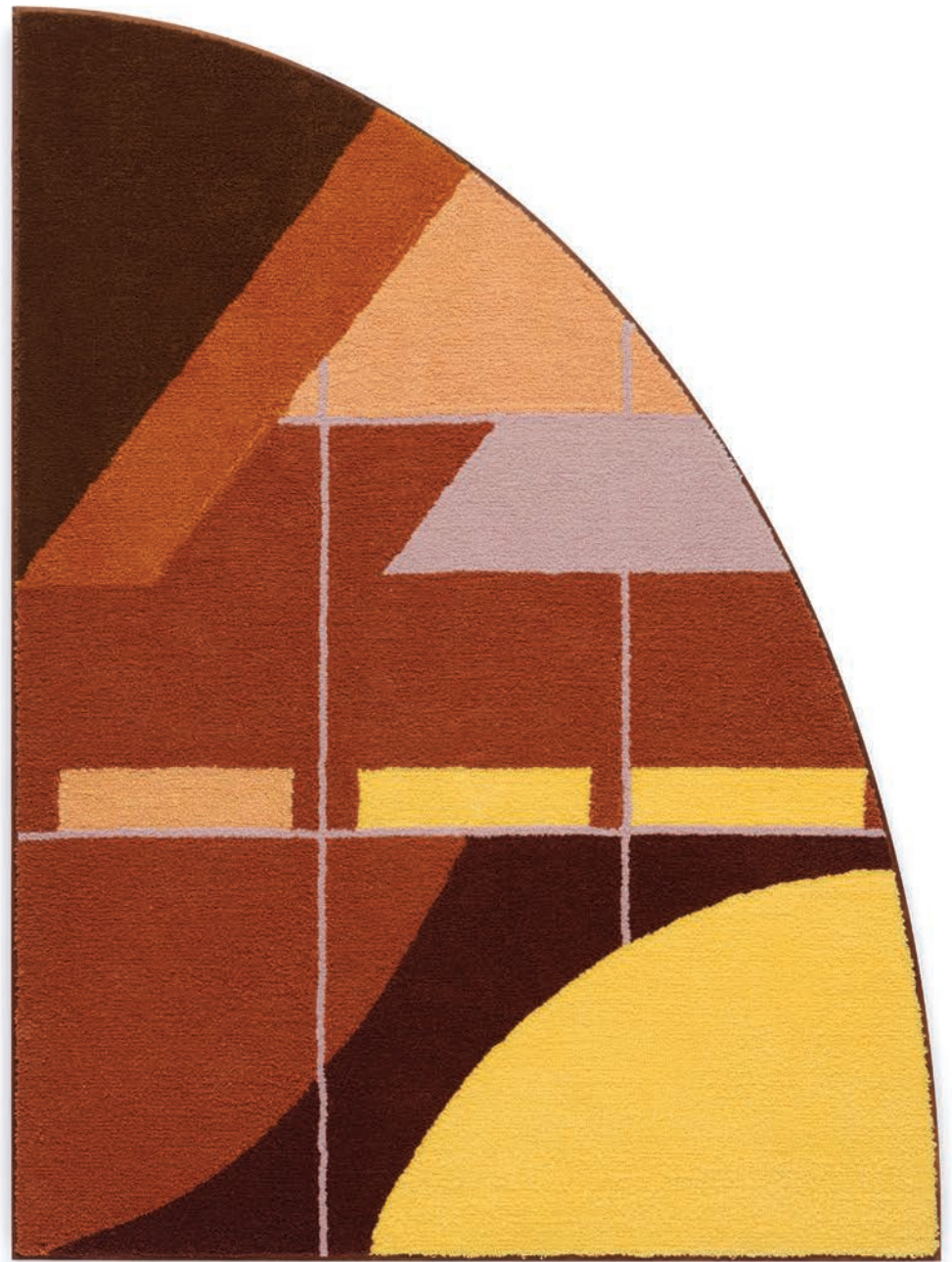
TINA KIM GALLERY

Suki Seokyeong Kang

Day #24-58, 2023-2024

Dyed wool, wood frame, thread
65 ⁷/₈ x 48 ⁷/₈ inches
167.2 x 124 cm

\$35,000



TINA KIM GALLERY

Suki Seokyeong Kang

Day #24-52, 2023-2024

Dyed wool, wood frame, thread
21⁵/₈ x 15³/₄ inches
55 x 40 cm

\$20,000



TINA KIM GALLERY

Suki Seokyeong Kang

Day #24-42, 2023-2024

Dyed wool, wood frame, thread
21⁵/₈ x 15³/₄ inches
55 x 40 cm

\$20,000



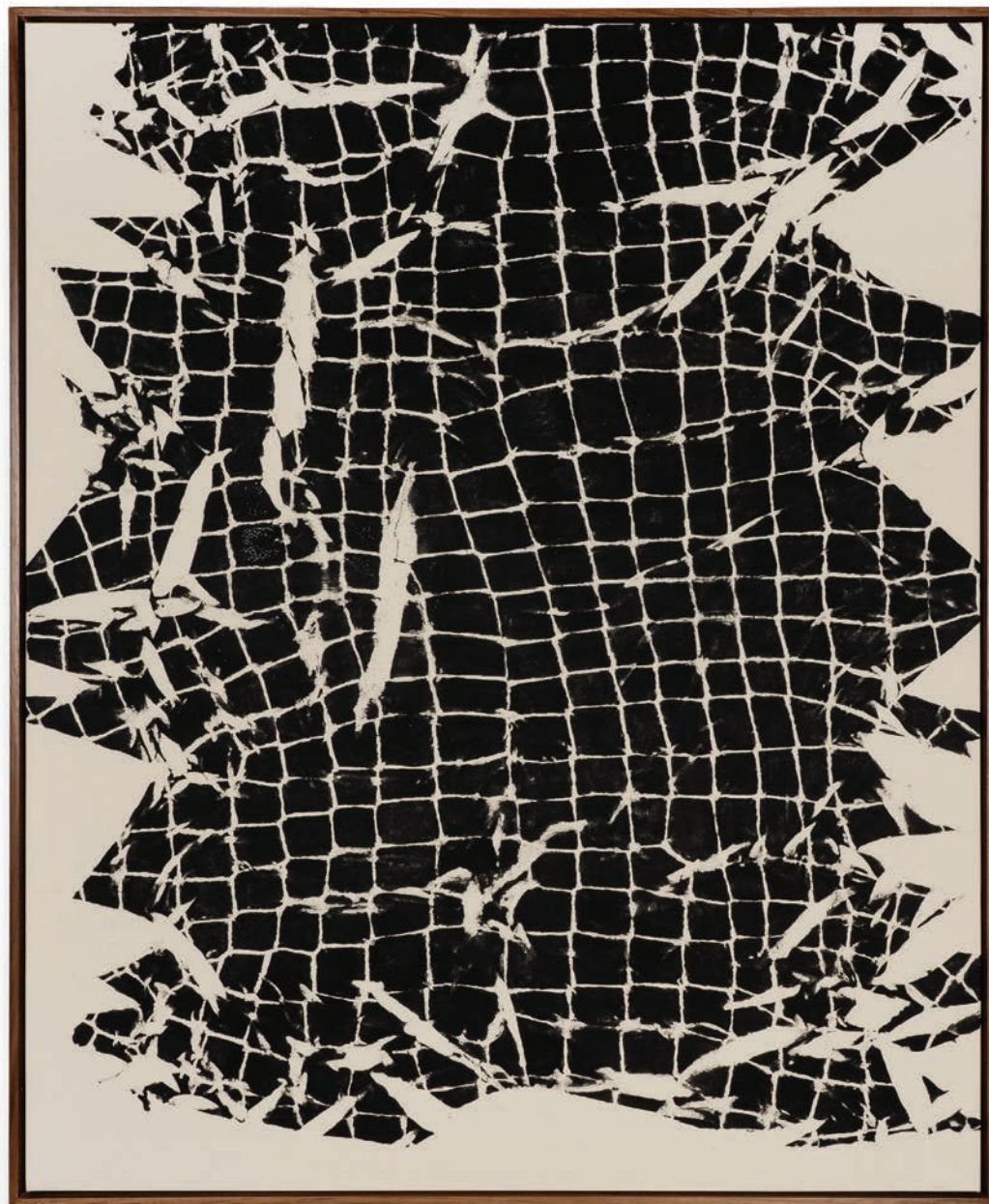
TINA KIM GALLERY

Maia Ruth Lee

B.B.M1-15, 2023

India ink on canvas
62 x 51 inches
157.5 x 129.5 cm
(Framed)

\$24,000



TINA KIM GALLERY

Maia Ruth Lee

B.B.Lattice 1-1, 2025

Ink on canvas
61½ x 60 inches
156.2 x 152.4 cm

\$24,000

A portion of the sales from this work
will be donated to LA fire relief.



TINA KIM GALLERY

Mire Lee

*Black Sun: Surface with many holes,
section #19, 2023*

Fabric and clay slip
44³/₈ x 28³/₄ inches
112.7 x 73 cm
(Framed)

\$20,000

A portion of the sales from this work
will be donated to LA fire relief.



TINA KIM GALLERY



TINA KIM GALLERY

Mire Lee

*Black Sun: Surface with many holes,
section #26, 2023*

Fabric and clay slip
60 x 33 inches
152.4 x 83.8 cm
(Framed)

\$20,000



TINA KIM GALLERY

Lee ShinJa

Conversation between Circles IV, 1973

Cotton, linen thread; tapestry

68½ x 21 inches

175 x 55 cm

(Left panel)

70 x 22½ inches

177 x 57 cm

(Right panel)

Price on request



TINA KIM GALLERY

Lee ShinJa

Spirit of Mountain, 1996

Wool thread, metal; tapestry

30 x 38⁵/₈ inches

76.2 x 98.1 cm

(Framed)

\$70,000



TINA KIM GALLERY

Lee ShinJa

Spirit of Mountain, 1998

Wool, synthetic thread, and metal; tapestry
31½ x 43 inches
80 x 109.2 cm
(Framed)

\$70,000



TINA KIM GALLERY

Park Seo-Bo

Ecriture No. 16-21, 2021

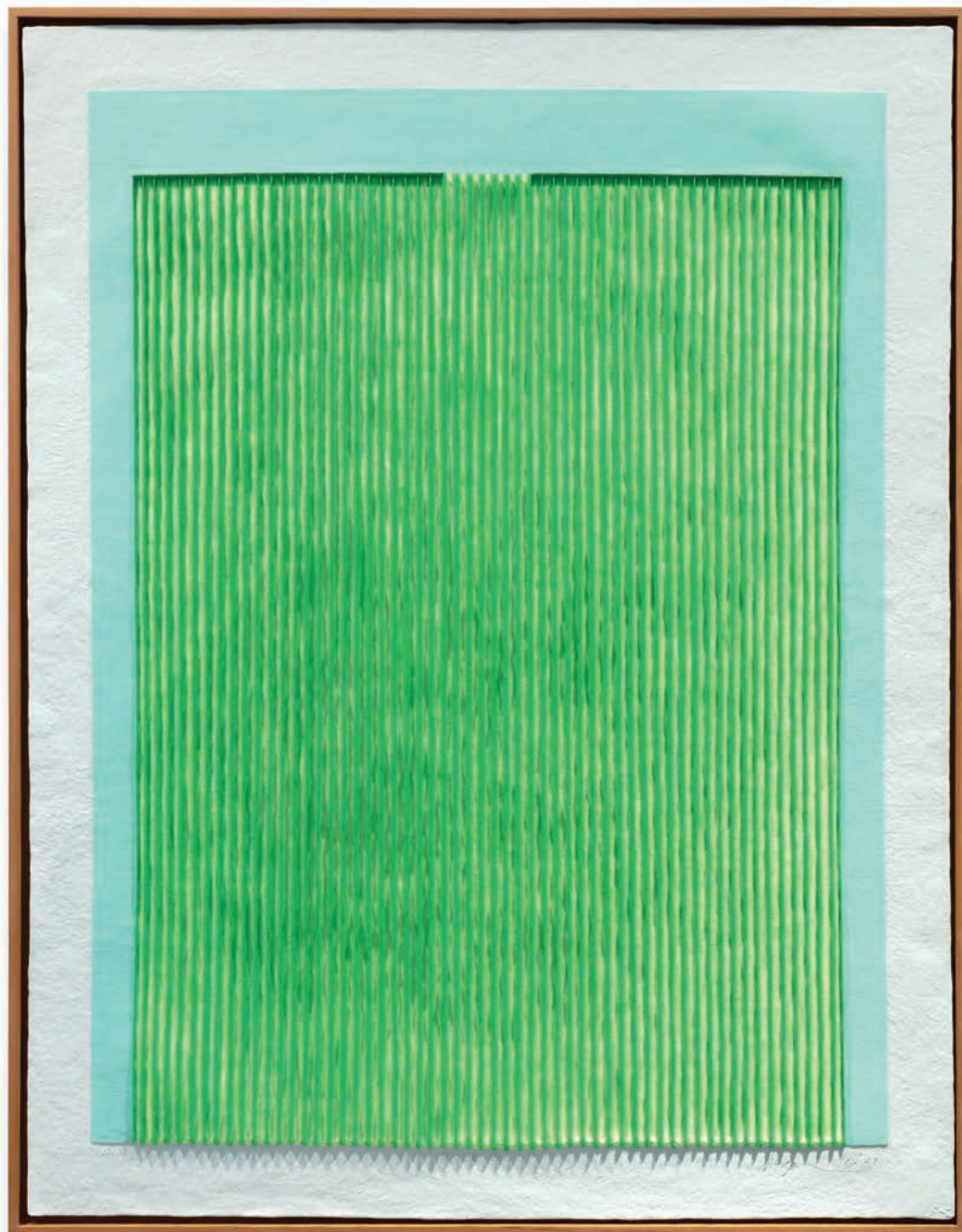
Relief print with Korean Hanji Paper

53¾ x 42 inches

136.5 x 106.7 cm

(Framed)

\$90,000



TINA KIM GALLERY

Tania Pérez Córdova

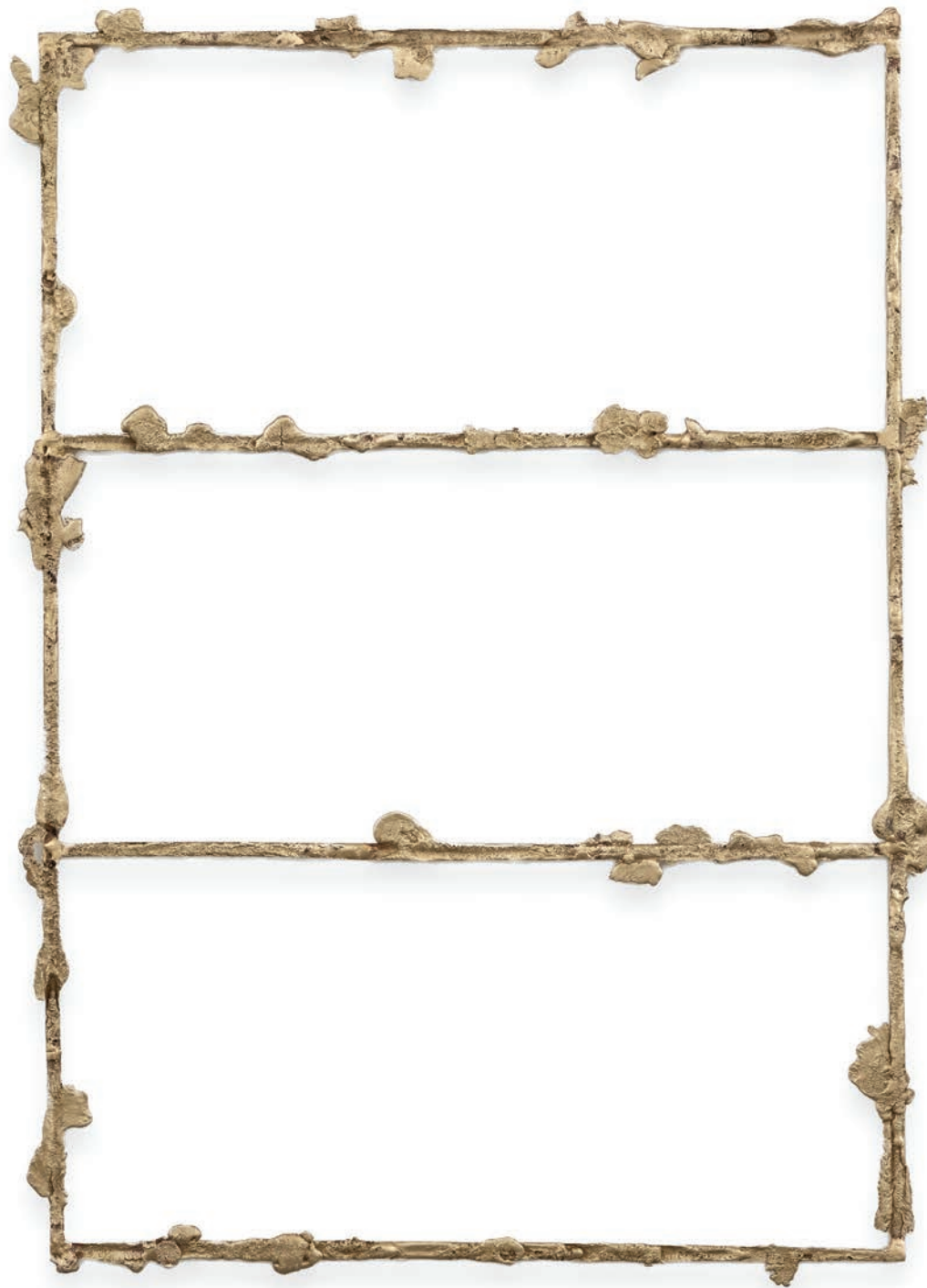
What Direct Sunlight Does, 2024

Bronze poured into sand
39³/₈ x 27¹/₂ inches
100 x 70 cm

\$20,000

A portion of the sales from this work
will be donated to LA fire relief.

TINA KIM GALLERY

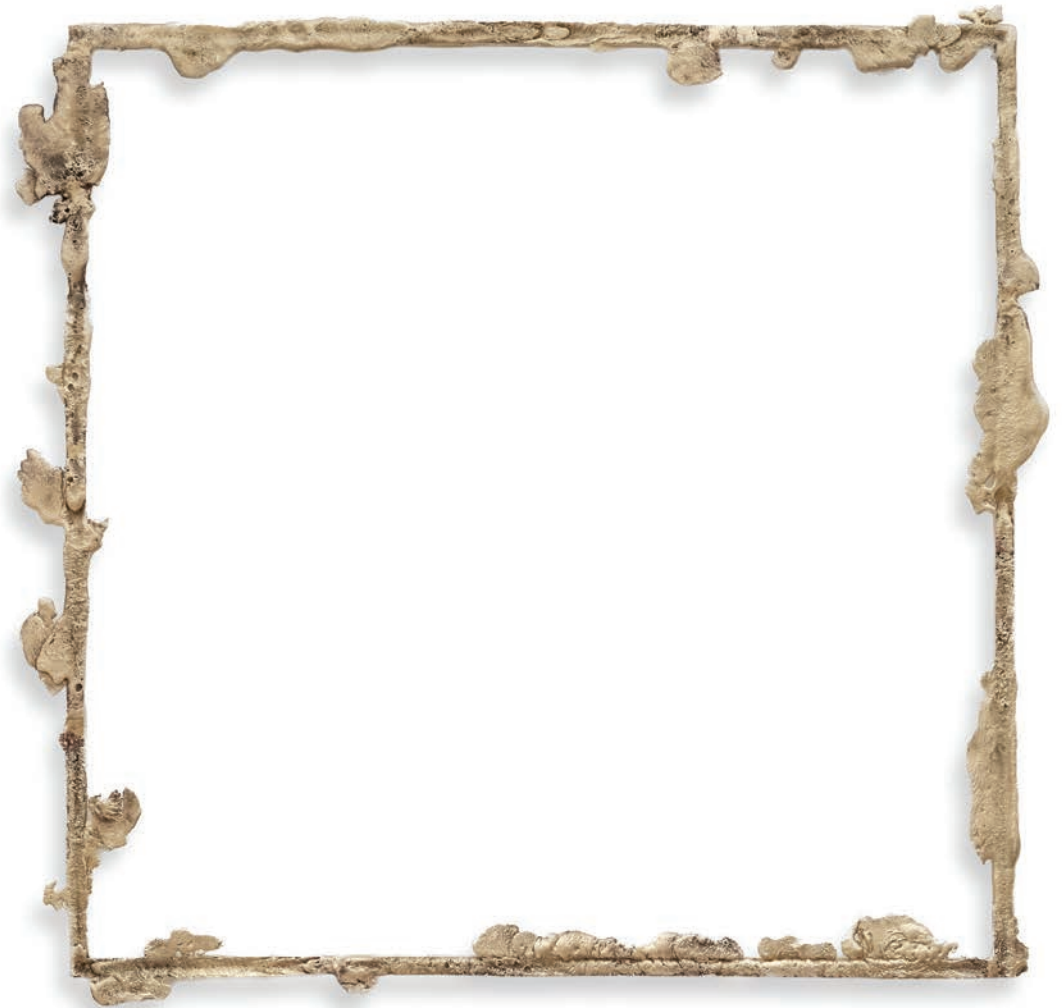


Tania Pérez Córdova

A View to Keep An Eye On, 2024

Bronze poured into sand
23⁵/₈ x 23⁵/₈ inches
60 x 60 cm

\$15,000



TINA KIM GALLERY

Jennifer Tee

Tampam Womb of Time, 2017

Tulip petal collage on paper
67 x 65 inches
170 x 165 cm
(Framed)

\$30,000

A portion of the sales from this work
will be donated to LA fire relief.



TINA KIM GALLERY

Jennifer Tee

Tampan Tree of Life, Blossom, 2024

Tulip petal collage, piezography; diptych

18¼ x 12¾ inches

46.4 x 31.4 cm

(Framed, each)

\$8,000



TINA KIM GALLERY

Jane Yang D'Haene

Untitled, 2024

Stoneware, porcelain, and glaze

16 x 14 x 14 inches

40.6 x 35.6 x 35.6 cm

\$18,000

TINA KIM GALLERY



Jane Yang D'Haene

Untitled, 2024

Stoneware, porcelain, and glaze

22 x 15½ x 15 inches

55.9 x 39.4 x 38.1 cm

\$29,000



TINA KIM GALLERY