



ADAA
FOUNDED 1962

LEE SHINJA

October 29–November 2, 2024

Park Avenue Armory
Booth A25

**THE
ART
SHOW**

TINA KIM GALLERY

TINA KIM GALLERY

ADAA | The Art Show
Lee ShinJa

October 29–November 2, 2024

Tina Kim Gallery is pleased to announce our participation in this year's edition of ADAA: The Art Show with a solo presentation dedicated to the pioneering Korean artist Lee ShinJa (b. 1930). Known for her highly intricate, monumental tapestries and her innovative contributions to fiber and textile art, Lee's career spans over five decades, during which she expanded the possibilities of Korean craft through the integration of unconventional materials and techniques.

Our presentation will focus on works produced between 1994 and the 2000s, a pivotal period in Lee's career when she began experimenting with metal elements in her tapestries. These elements, often functioning as frames or windows, open new perspectives within her abstracted depictions of natural landscapes. These works are deeply influenced by the light, atmosphere, and natural forms of the sea, mountains, and forests from her hometown in Gyeongsangbuk-do, as well as the artist's internal emotional landscape. As Lee explains, "The seascape I saw off the coast of Uljin as a child, and the spiritual energy brimming in the mountains I climbed while holding my father's hand, were saturated with everything, from the sound of waves, to light, memories, love, and parting."



Lee ShinJa's contributions to the field of fiber art are profound, and her impact on Korean art history is widely recognized. After graduating from the Department of Applied Fine Arts at Seoul National University in 1955, she earned her master's degree from the Graduate School of Industrial Arts at Hongik University in 1974. Her academic career included a long tenure as professor at Duksung Women's University (1966-1997), where she also served as director of the Duksung Women's University Museum of Art (1973-1994), focusing on the preservation of Korea's vanishing craft traditions. In 1979, she founded the Korea Design Association, serving as its vice president until 1983.

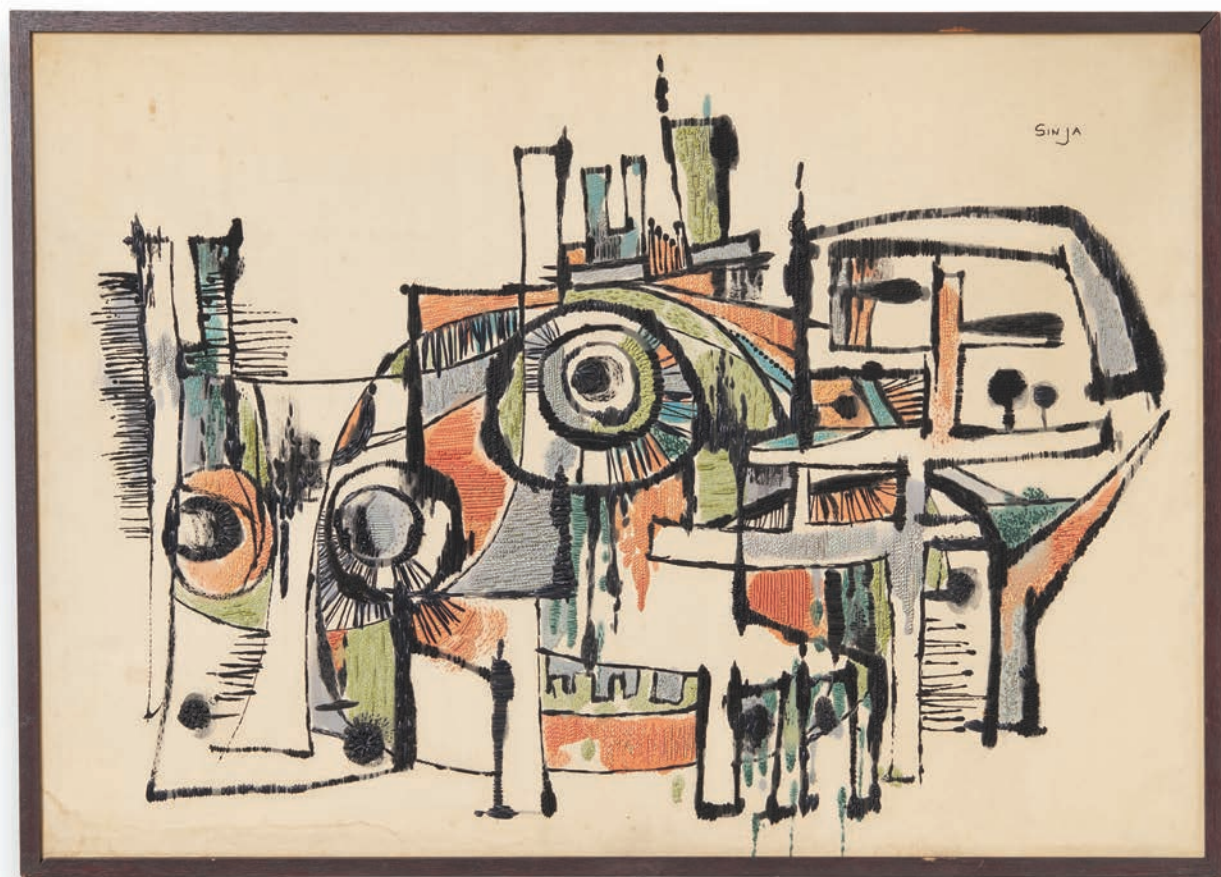
Recently, Lee was the subject of a major retrospective exhibition, *Lee ShinJa: Threadscapes*, held at the National Museum of Modern and Contemporary Art in Gwacheon, South Korea, from September 2023 to February 2024, further affirming her place in the canon of contemporary art.

We invite you to visit Booth A25 at the Park Avenue Armory from October 29 – November 2, 2024, to experience this exceptional selection of works firsthand.

Work, 1960s

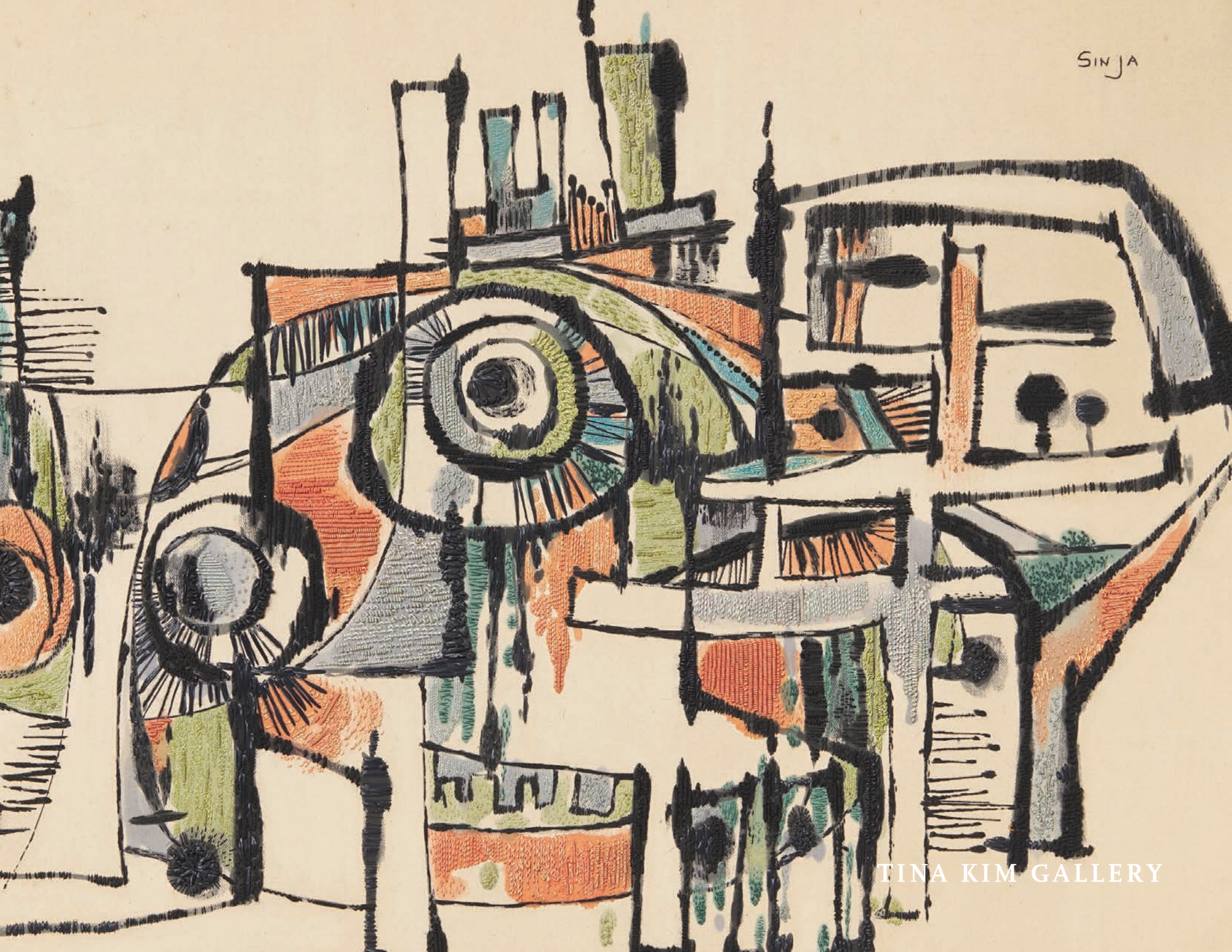
Cotton, wool, synthetic thread,
and chemical dyes on cotton cloth;
screen print, free technique
22 $\frac{7}{8}$ x 32 $\frac{1}{2}$ inches
58 x 82.5 cm
(Framed)

\$100,000



TINA KIM GALLERY

SINJA



TINA KIM GALLERY

Portrait of My Daughter, 1962

Cotton, wool thread, and oil crayon on cotton cloth;
free technique

45 ¼ x 32 ½ x 1 ⅝ inches

114.9 x 82.6 x 4.1 cm

(Framed)

Price on request



TINA KIM GALLERY



TINA KIM GALLERY

Untitled, 1970s

Cotton, linen, and wool thread; tapestry

60 x 34 ⁷/₈ inches

152.4 x 88.6 cm

\$150,000

TINA KIM GALLERY





TINA KIM GALLERY

Untitled, c.1970s

Cotton, wool thread; tapestry

67 ³/₄ x 26 inches

172 x 66 cm

Price on request



TINA KIM GALLERY



TINA KIM GALLERY

Work I, 1979

Chemical dyes on cotton cloth;
paste resist dyeing
30 ¼ x 32 ⅛ inches
77 x 81.5 cm
(Framed)

\$80,000



TINA KIM GALLERY



'79
SINJA

TINA KIM GALLERY

Growth, c.1980s

Wool thread; tapestry
53 ½ x 44 ⅛ inches
136 x 112 cm

\$120,000



TINA KIM GALLERY



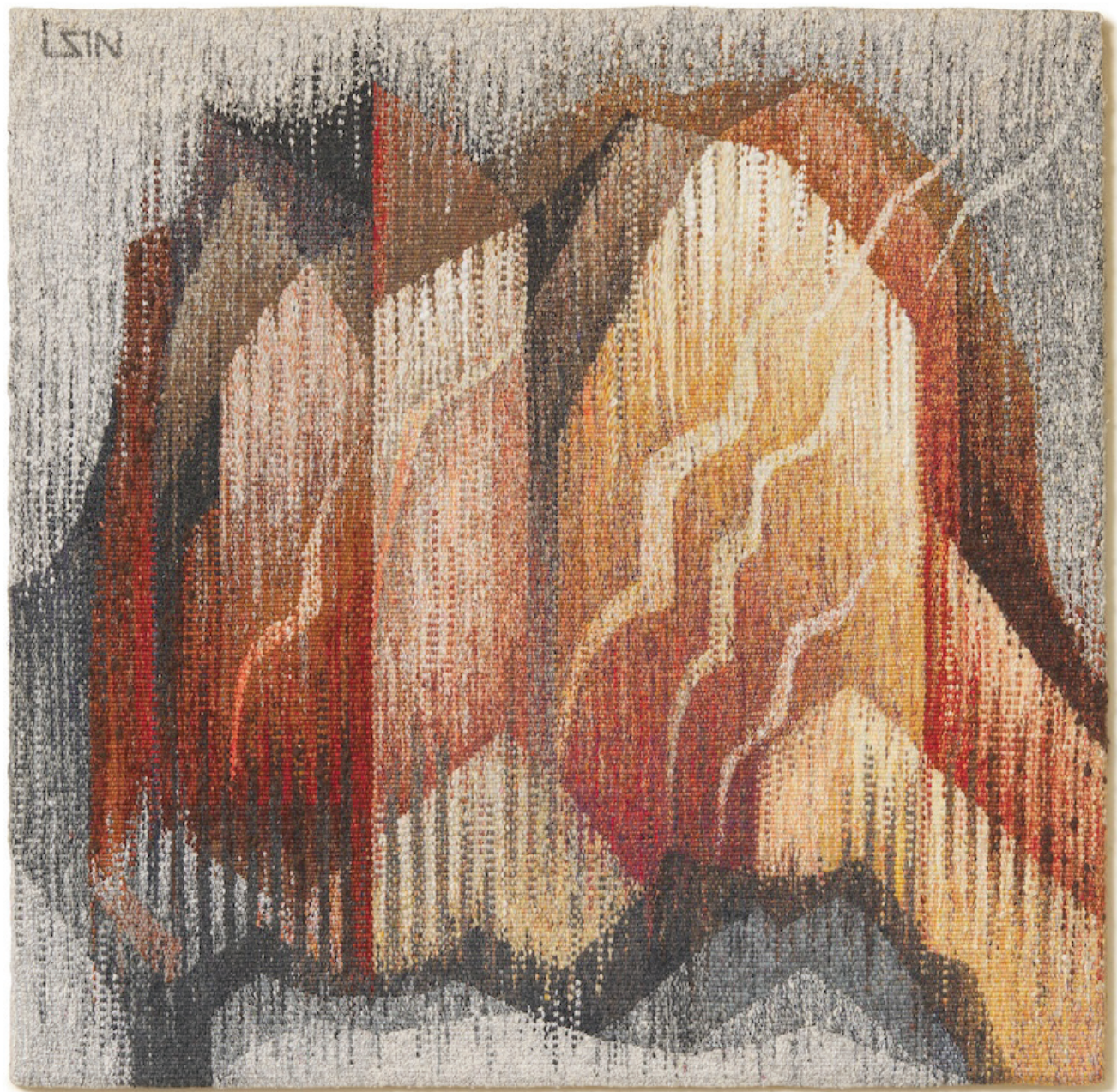
TINA KIM GALLERY

LSN

Spirit of Mountain, 1985

Wool thread; tapestry
44 $\frac{7}{8}$ x 45 $\frac{1}{4}$ x 2 inches
114 x 114.9 x 5.1 cm
(Framed)

\$100,000



TINA KIM GALLERY

LSIN

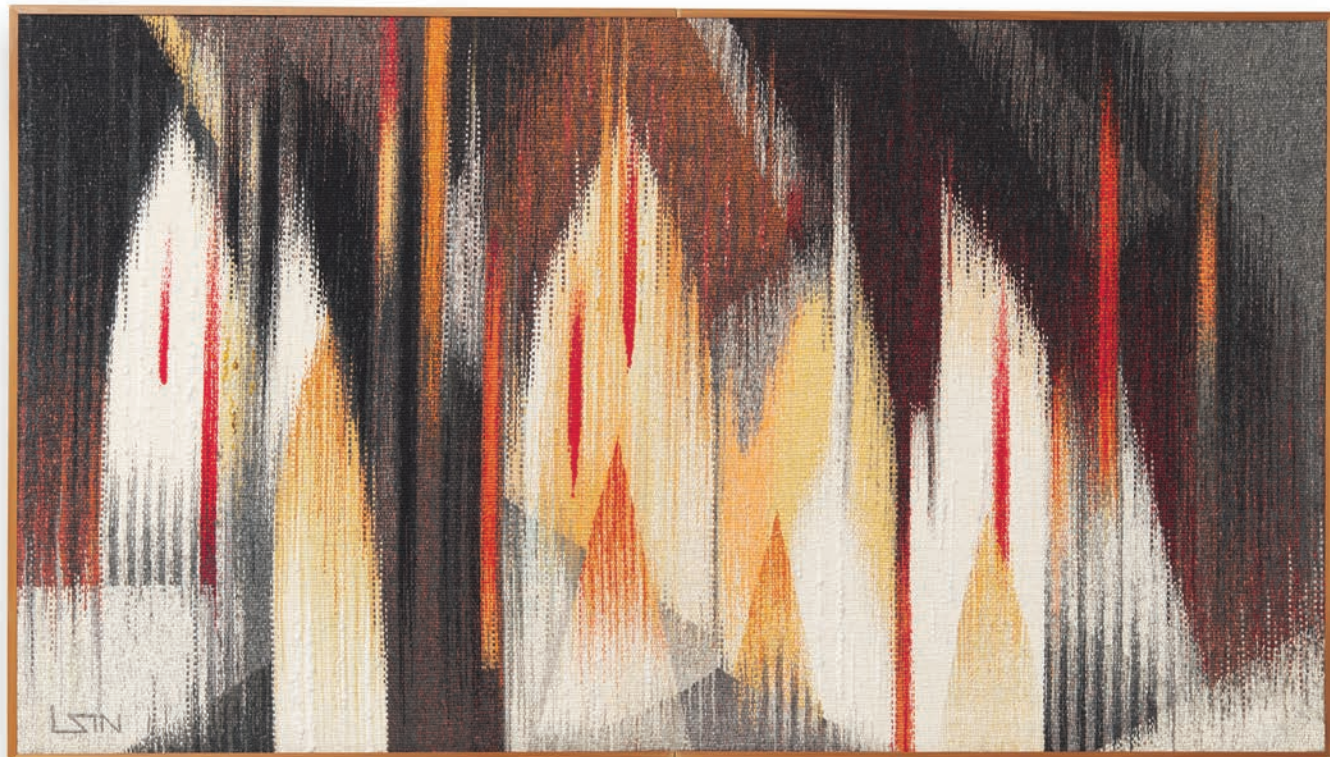


TINA KIM GALLERY

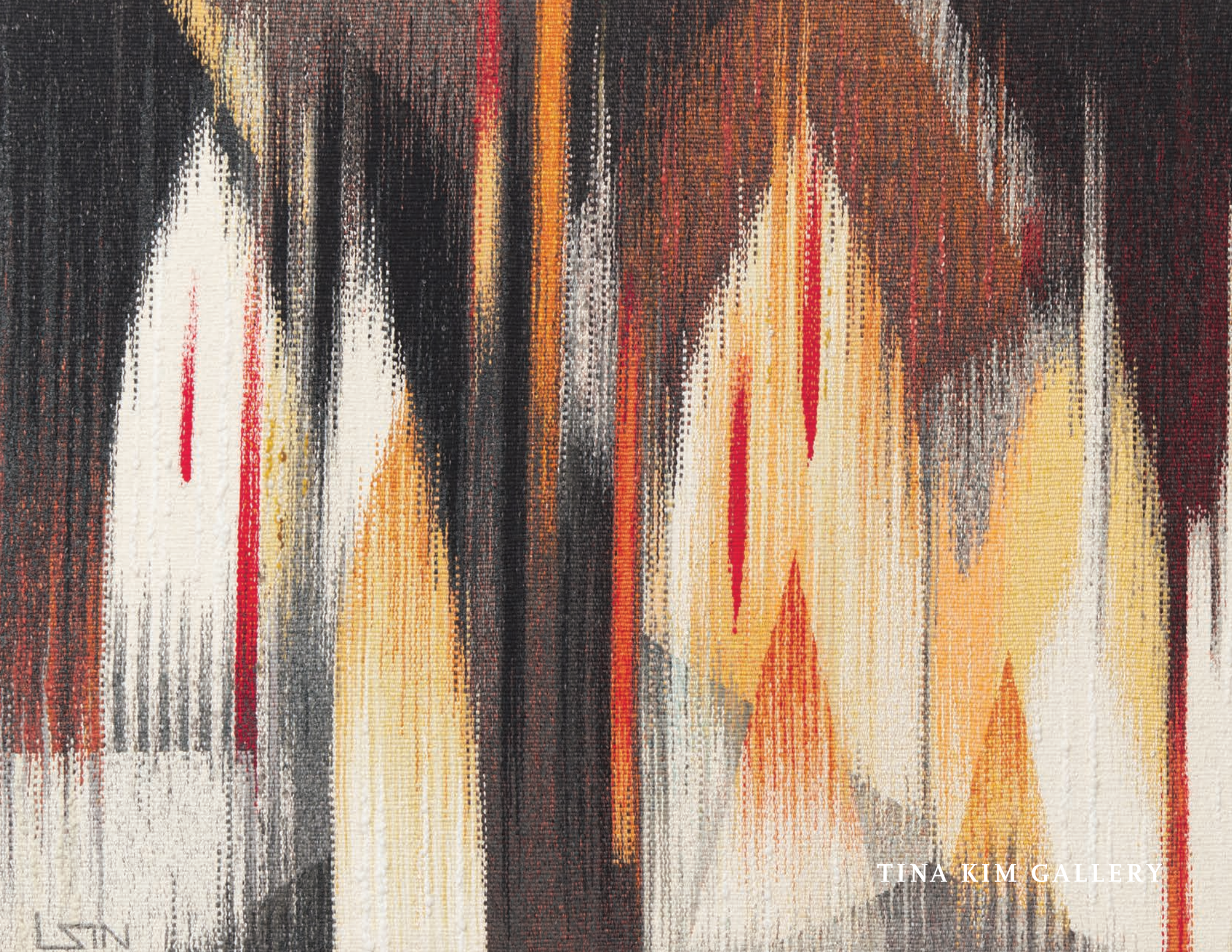
Image of Light, 1987

Wool thread; tapestry
46 ½ x 82 x 2 inches
118.1 x 208.3 x 5.1 cm
(Framed)

\$180,000



TINA KIM GALLERY



TINA KIM GALLERY

TK

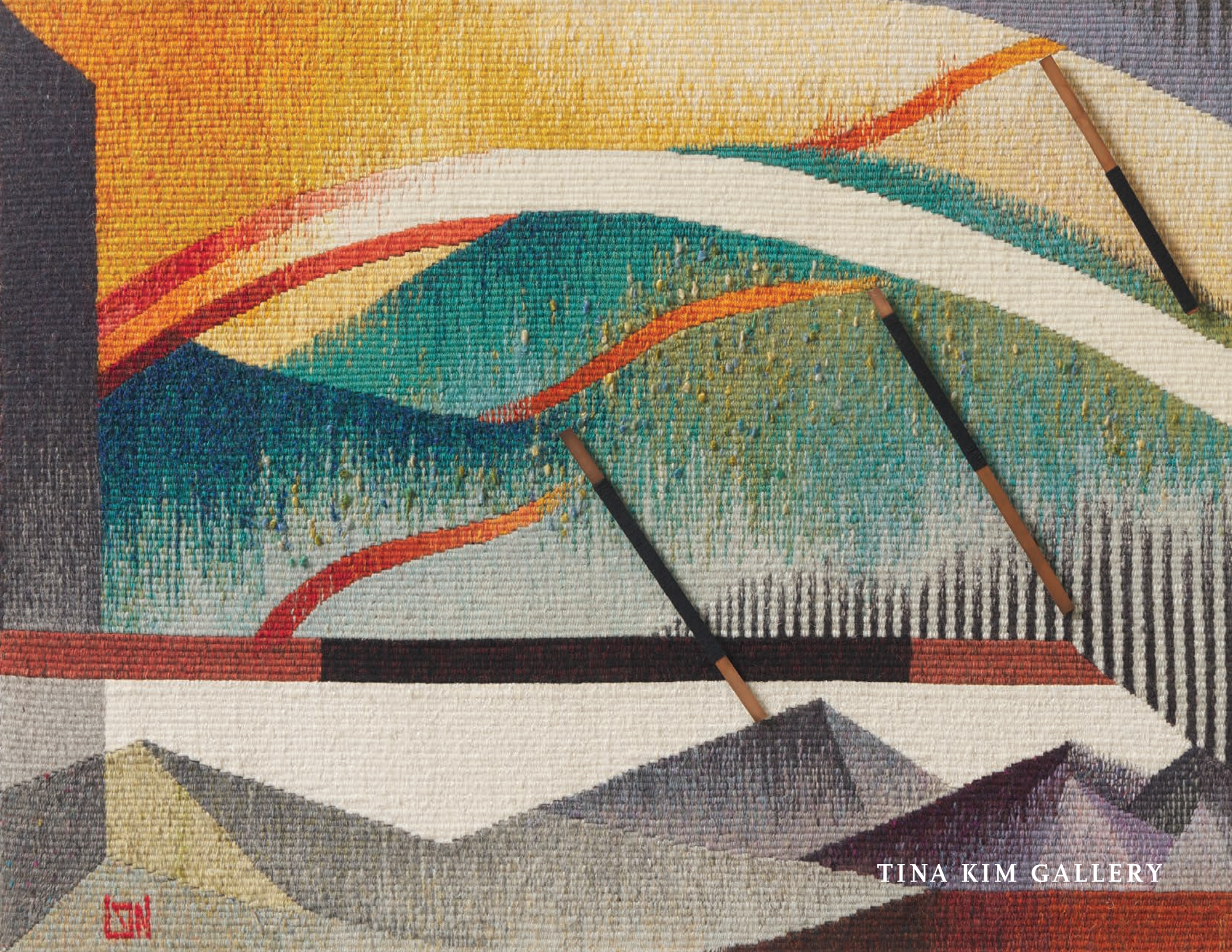
Spirit of Mountain, 1998

Wool, synthetic thread, and metal;
tapestry
31 ½ x 43 x 3 inches
80 x 109.2 x 7.6 cm
(Framed)

\$70,000



TINA KIM GALLERY



TINA KIM GALLERY

TINA

Spirit of Mountain, 1996

Wool, synthetic thread; tapestry

30 x 40 ¼ x 2 ½ inches

76.2 x 102.2 x 6.4 cm

(Framed)

\$70,000



TINA KIM GALLERY



TINA KIM GALLERY

Spirit of Mountain, 1997

Wool thread, metal; tapestry

20 x 17 ⁵/₈ x 2 ³/₄ inches

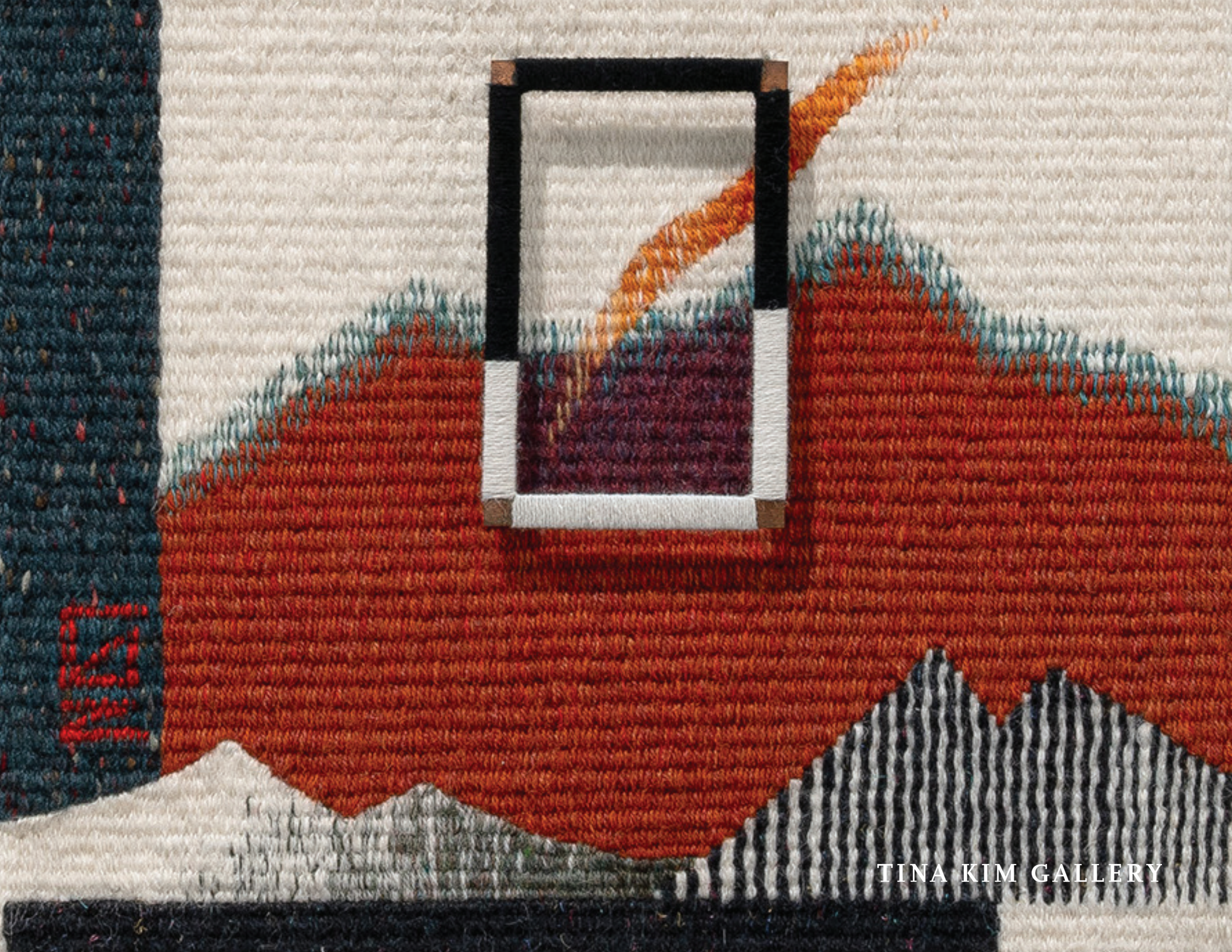
50.8 x 44.8 x 7 cm

(Framed)

\$40,000



TINA KIM GALLERY



Handmade
by Tina Kim
in 2015

TINA KIM GALLERY

Spirit of Mountain, 1999

Wool, synthetic thread; tapestry

75 x 29 ⁷/₈ inches

190.5 x 76 cm

\$200,000

TINA KIM GALLERY





TINA KIM GALLERY