



ALISON JACQUES

ART BASEL MIAMI 2024

Booth F8
4 - 8 December 2024

Alison Jacques Gallery

Link with prices: <https://privateviews.artlogic.net/2/6da47cf7ac78ce7437bb4/>



TELL ME YOU LOVE
ME SPIN ME AROUND



Sophie Barber
Tell me you love me, 2024
Oil on canvas
Framed: 158 x 128 cm (62 ¼ x 50 ⅜ in)
(AJG-SBa-00263)

[Click here for further images
and additional information →](#)



I REALLY WISH
YOU WERE HERE



Sophie Barber
Wolfgang and i wish you were here, 2024
Oil on canvas
Framed: 227 x 165 cm (89 ³/₈ x 65 in)
(AJG-SBa-00249)

[Click here for further images
and additional information →](#)

Sophie Barber

It's Wayne thiebauds party, 2024

Oil on canvas

33 x 44 x 6 cm (13 x 17 ³/₈ x 2 ³/₈ in)

(AJG-SBa-00260)

[Click here for further images
and additional information →](#)

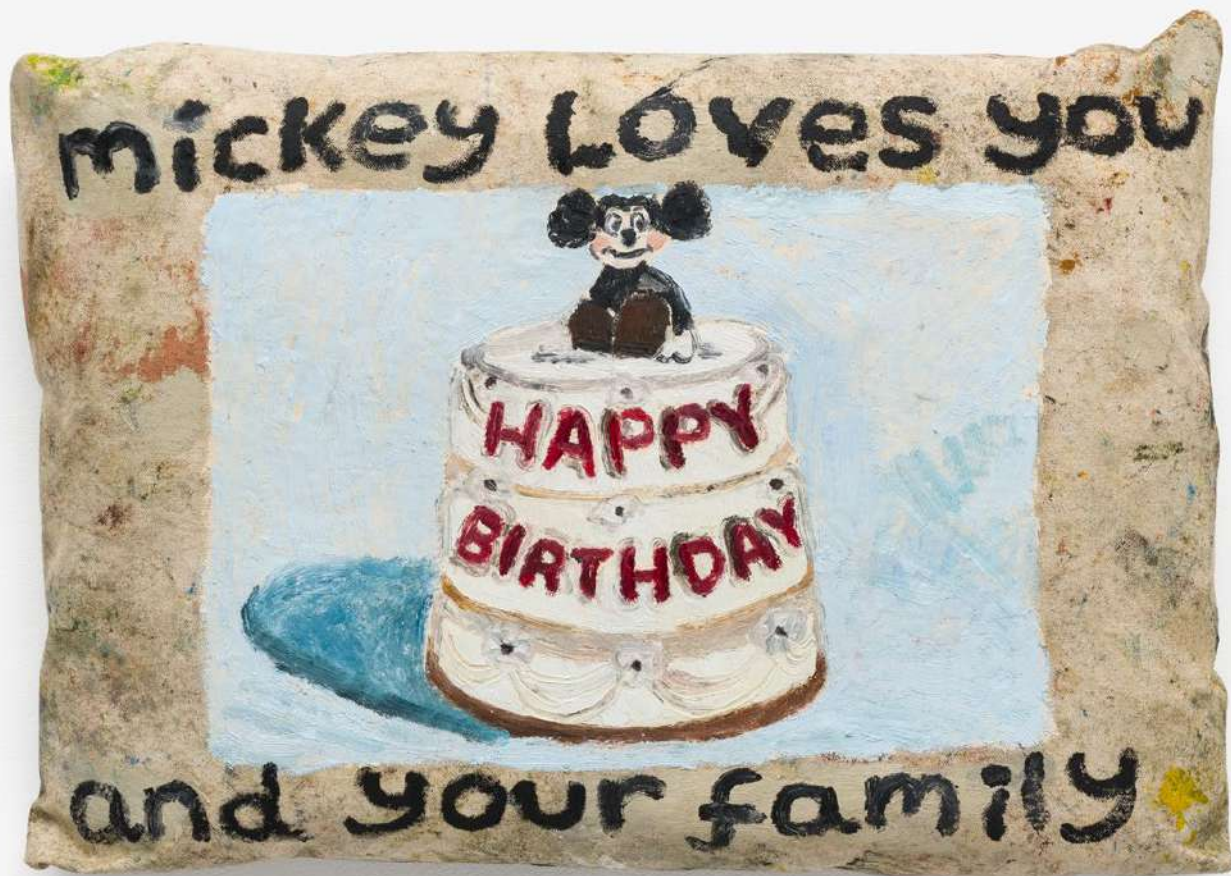


Sophie Barber
Second mouse gets the cheese, 2024
Oil and wood on canvas
34 x 47 x 10 cm (13 ³/₈ x 18 ¹/₂ x 4 in)
(AJG-SBa-00261)

[Click here for further images
and additional information →](#)







Sophie Barber
Mickey loves all of us, 2024
Oil on canvas
37.5 x 54 x 8 cm (14 ³/₄ x 21 ¹/₄ x 3 ¹/₈ in)
(AJG-SBa-00262)

[Click here for further images
and additional information →](#)





Sergio Camargo

Relief No.8, 1964

Painted wood

123 x 123 x 11 cm (48 ³/₈ x 48 ³/₈ x 4 ³/₈ in)

(AJG-SC-00001)

[Click here for further images
and additional information →](#)



Lygia Clark
Espaço modulado / Modulated space, 1958
Card collage
Framed: 45 x 50.4 x 4 cm (17 ³/₄ x 19 ⁷/₈ x 1 ⁵/₈ in)
(AJG-LyC-00234)

[Click here for further images
and additional information →](#)



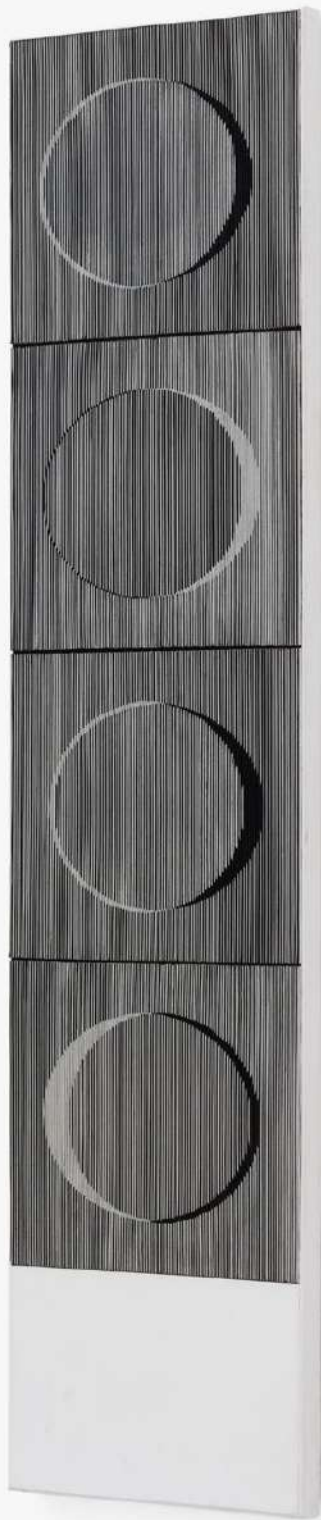
Lygia Clark
Estruturas de Caixa de Fósforos (Preto e Branco)
/ Matchbox Structure (Black and White), 1964
Gouache paint, matchboxes
7 x 5.5 x 5 cm (2 ³/₄ x 2 ¹/₈ x 2 in)
Installation dimensions variable
(AJG-LyC-00971)

[Click here for further images
and additional information →](#)



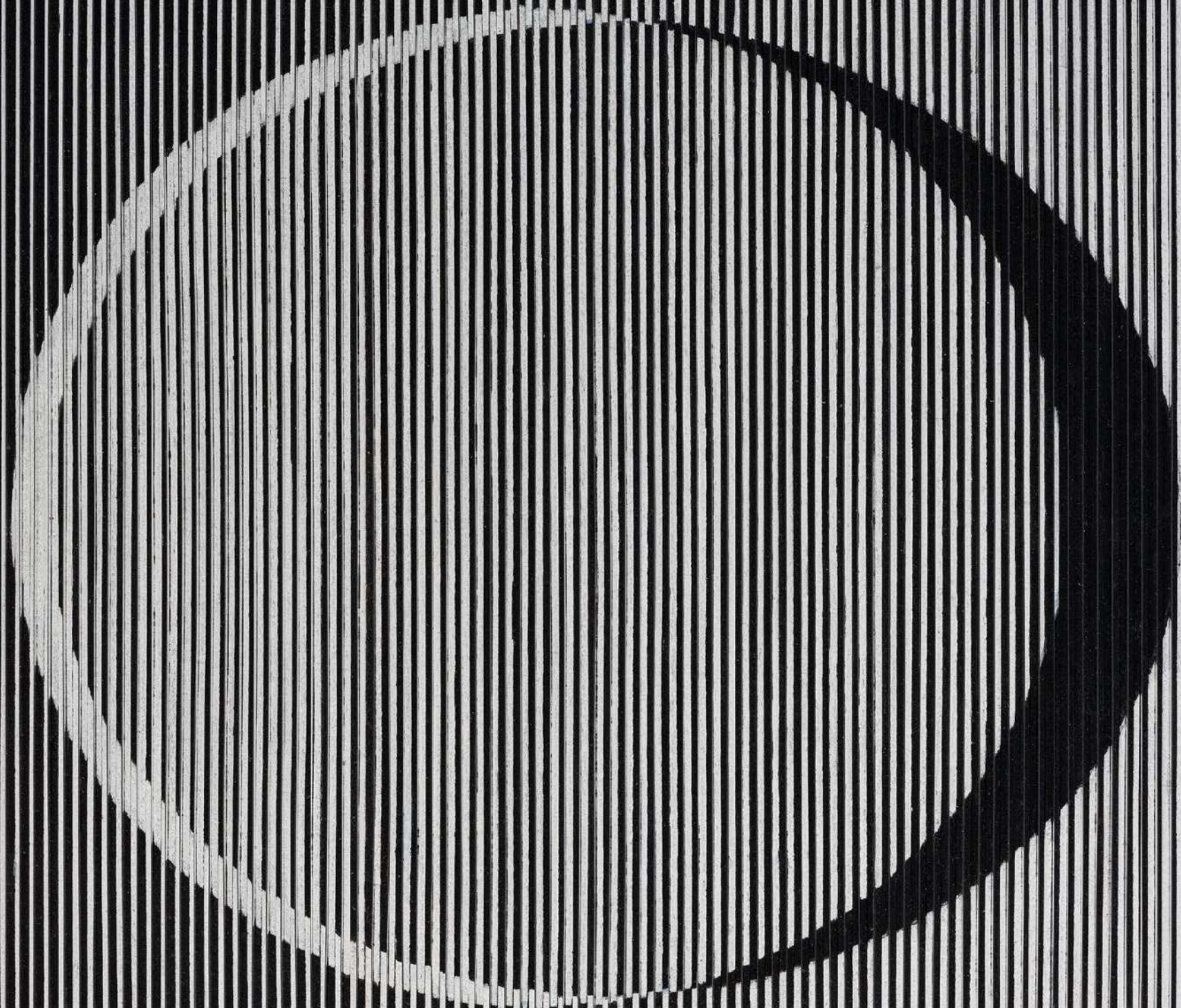
Lygia Clark
*Estruturas de Caixa de Fósforos (Dourado) /
Matchbox Structure (Gold)*, 1964
Gouache paint, matchboxes
6 x 6.5 x 5.5 cm (2 $\frac{3}{8}$ x 2 $\frac{1}{2}$ x 2 $\frac{1}{8}$ in)
Installation dimensions variable
(AJG-LyC-00975)

[Click here for further images
and additional information →](#)



Carlos Cruz-Diez
Physichromie No. 127, 1964
Casein fabric and mirrored acrylic on panel
143 x 32.8 x 4.3 cm (56 ¼ x 12 ⅞ x 1 ¾ in)
(AJG-CCD-00001)

[Click here for further images
and additional information →](#)









Sheila Hicks

Jumping with Joy, 2024

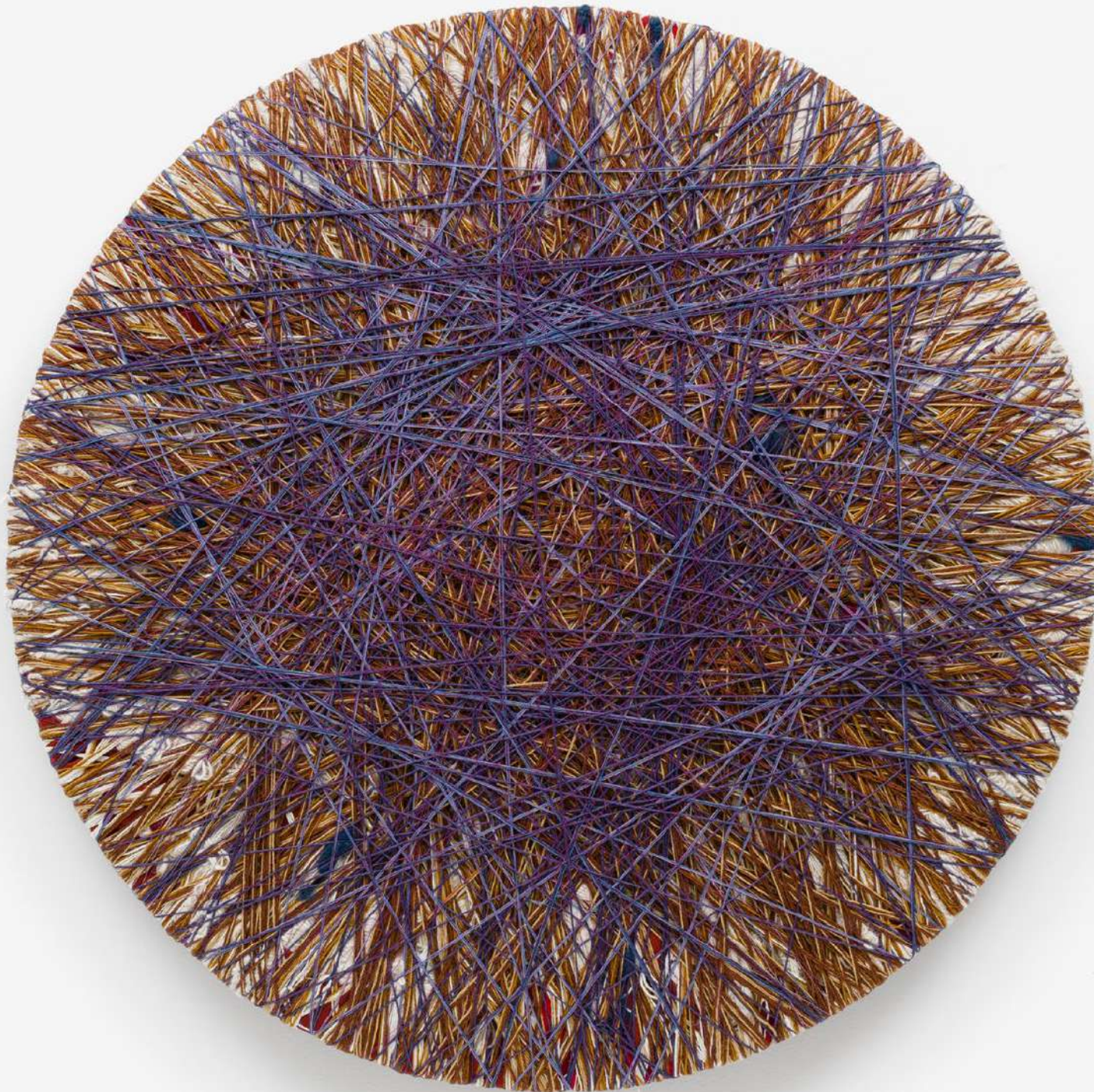
Linen, cotton, silk

110 x 110 cm (43 ¼ x 43 ¼ in)

(AJG-SH-00630)

[Click here for further images
and additional information →](#)

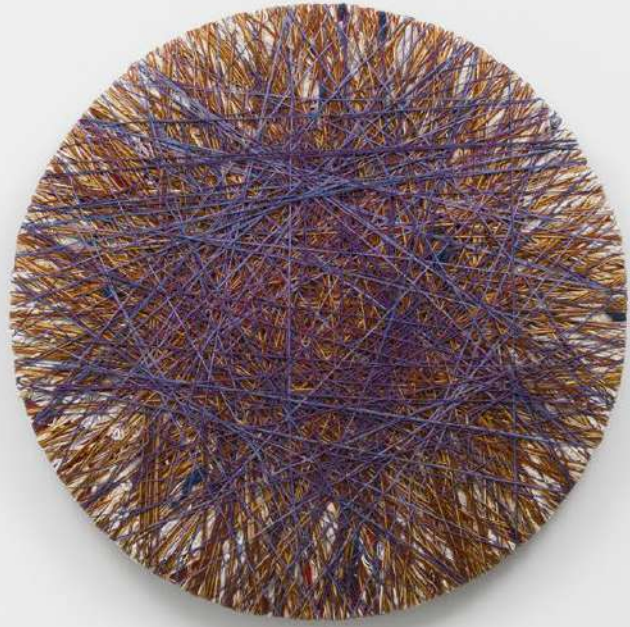






Sheila Hicks
Sacred Temple Lavender, 2024
Linen, wool, synthetic fibre
90 x 90 cm (35 ³/₈ x 35 ³/₈ in)
(AJG-SH-00624)

[Click here for further images
and additional information →](#)







Sheila Hicks

Marching to my Music, 2024

Bamboo, cotton, linen, synthetic fibre

162 x 120 cm (63 ¾ x 47 ¼ in)

Installation dimensions variable

(AJG-SH-00629)

[Click here for further images
and additional information →](#)



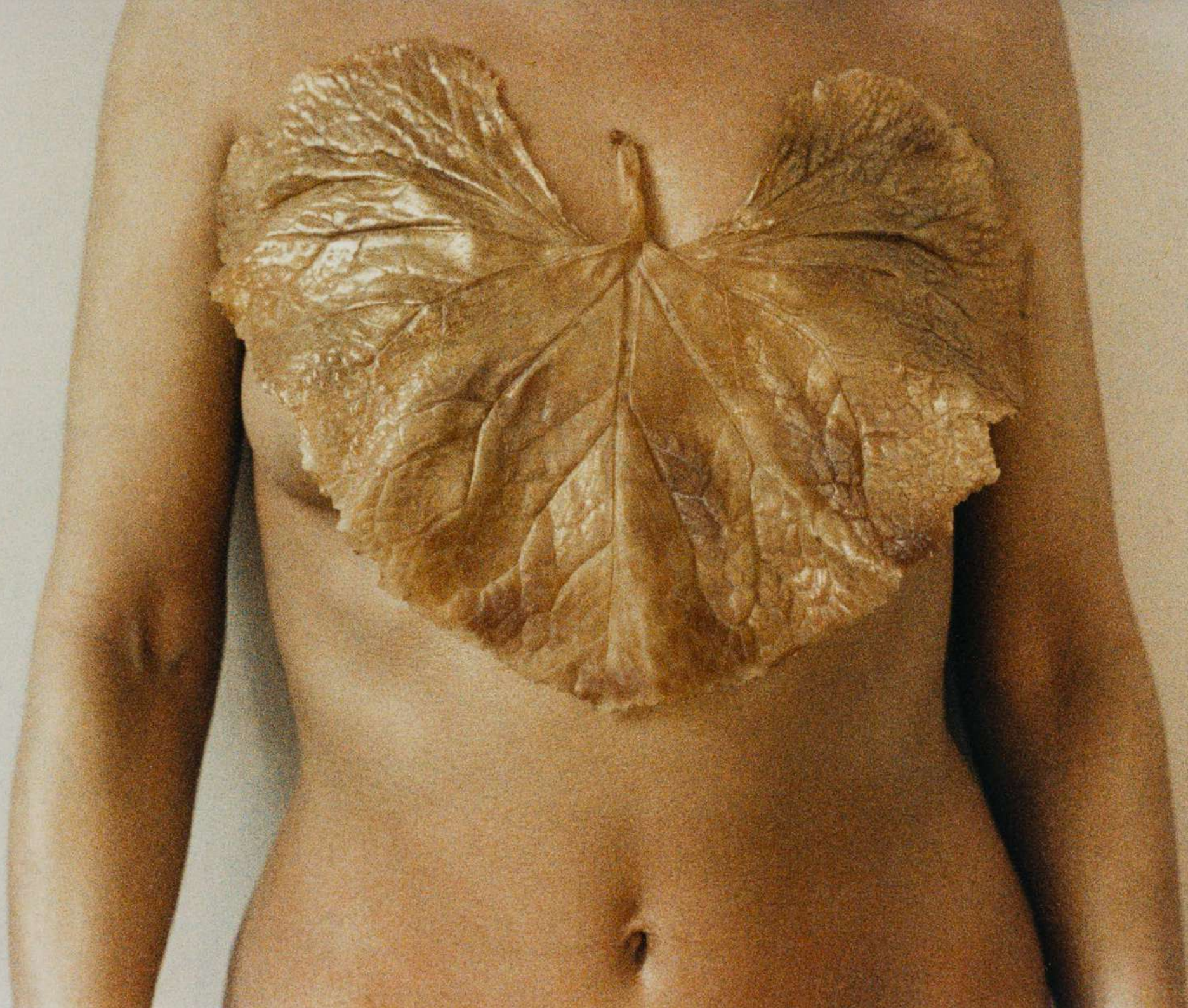




Sheila Hicks
Running Rampart, 2024
Linen, wool, synthetic fibre
90 x 90 cm (35 ³/₈ x 35 ³/₈ in)
(AJG-SH-00632)

[Click here for further images
and additional information →](#)





Birgit Jürgensen

Untitled, 1988

Colour photograph

Framed: 38.5 x 46.5 cm (15 1/8 x 18 1/4 in)

(AJG-BJ-00499)

[Click here for further images
and additional information →](#)





Birgit Jürgensen

Untitled, 1988

Colour photograph

Framed: 38.5 x 46.5 cm (15 1/8 x 18 1/4 in)

(AJG-BJ-00500)

[Click here for further images
and additional information →](#)





Takuro Kuwata

Tea Bowl, 2024

Porcelain, glaze, steel, platinum

39 x 50 x 44 cm (15 ³/₈ x 19 ³/₄ x 17 ³/₈ in)

(AJG-TKU-00203 / TaK-A-24-024)

[Click here for further images
and additional information →](#)

Takuro Kuwata

Tea Bowl, 2024

Porcelain, glaze, steel, pigment

36 x 43.5 x 45 cm (14 1/8 x 17 1/8 x 17 3/4 in)

(AJG-TKU-00204 / TaK-A-24-025)

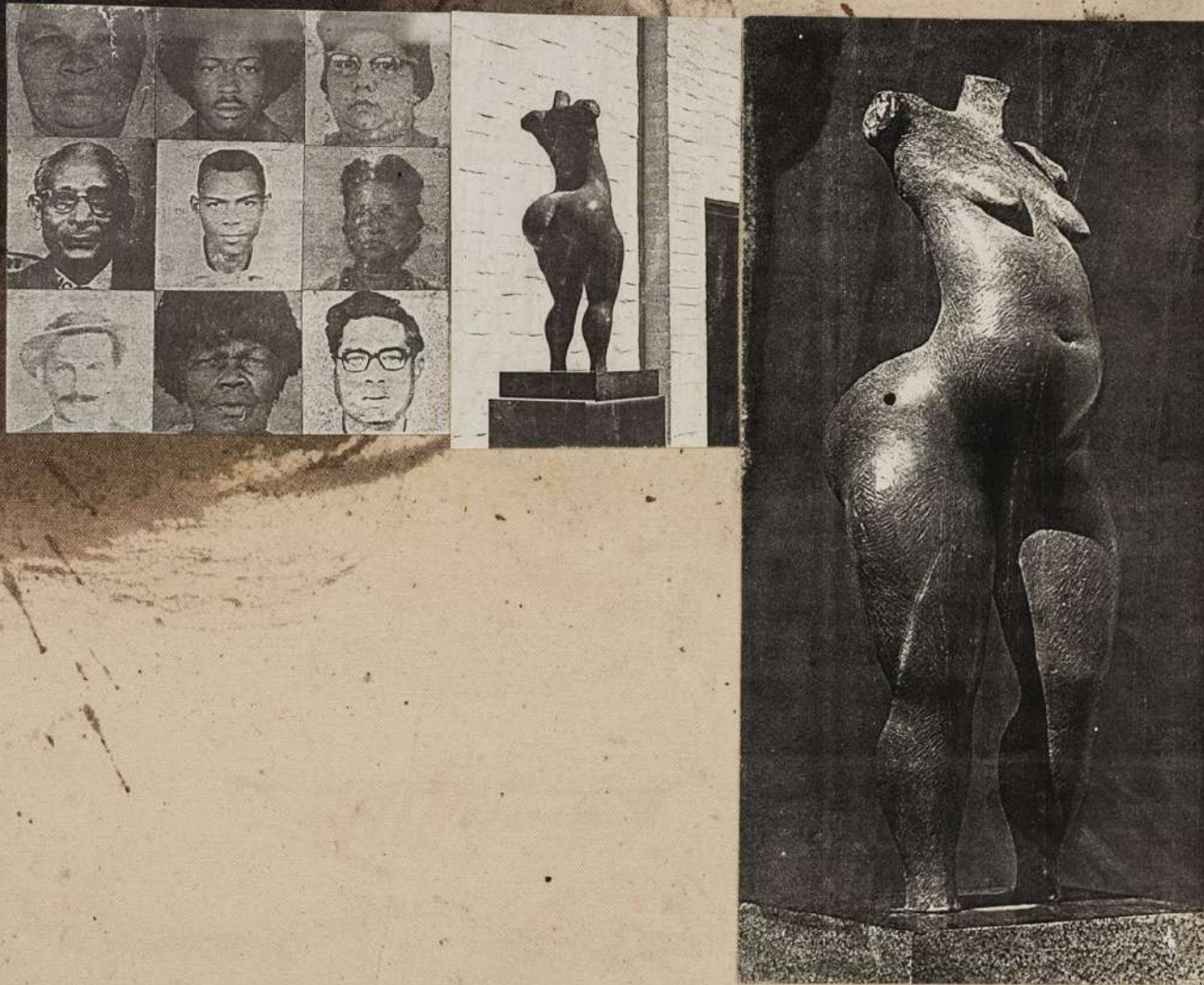
[Click here for further images
and additional information →](#)





Donald Locke
Pomona and the Water Carrier, 1992
Acrylic, wood, plexiglass, photograph collage
on canvas
Framed: 136.7 x 157 (53 7/8 x 61 3/4 in)
(AJG-DL-00034)

[Click here for further images
and additional information →](#)









Robert Mapplethorpe

Poppy, 1988

Pigment print

Paper size: 160 x 160 cm (63 x 63 in)

Framed: 165 x 165 cm (65 x 65 in)

Edition of 5 + 1 AP

(AJG-MAP-DT1837)

[Click here for further images
and additional information →](#)





Robert Mapplethorpe

Leaf, 1987

Silver gelatin print

Framed: 83.8 x 70.9 cm (33 x 27 7/8 in)

Edition 7/10

(AJG-MAP-01813V)

[Click here for further images
and additional information →](#)





Robert Mapplethorpe

Tomato/Knife, 1989

Silver gelatin print

Framed: 83.8 x 70.9 cm (33 x 27 7/8 in)

AP 2/2, Edition of 10

(AJG-MAP-01936)

[Click here for further images
and additional information →](#)





Ana Mendieta

Untitled (Grass on Woman), 1972

Suite of five colour photographs

Framed: 50.5 x 65.5 cm (19 ⁷/₈ x 25 ³/₄ in)(x2)

Framed: 66.5 x 49.5 cm (26 ¹/₈ x 19 ¹/₂ in)(x3)

Overall: 196.5 x 123 cm (77 ³/₈ x 48 ³/₈ in)

Edition 1/10

(AJG-AMe-00067)

[Click here for further images
and additional information →](#)





Ana Mendieta
Flower Person, Flower Body, 1975
Colour photograph
Framed: 55.2 x 71.1 cm (21 ¾ x 28 in)
Edition 7/10
(AJG-AMe-00203)

[Click here for further images
and additional information →](#)





Ana Mendieta

Untitled, 1973

Suite of six black and white photographs

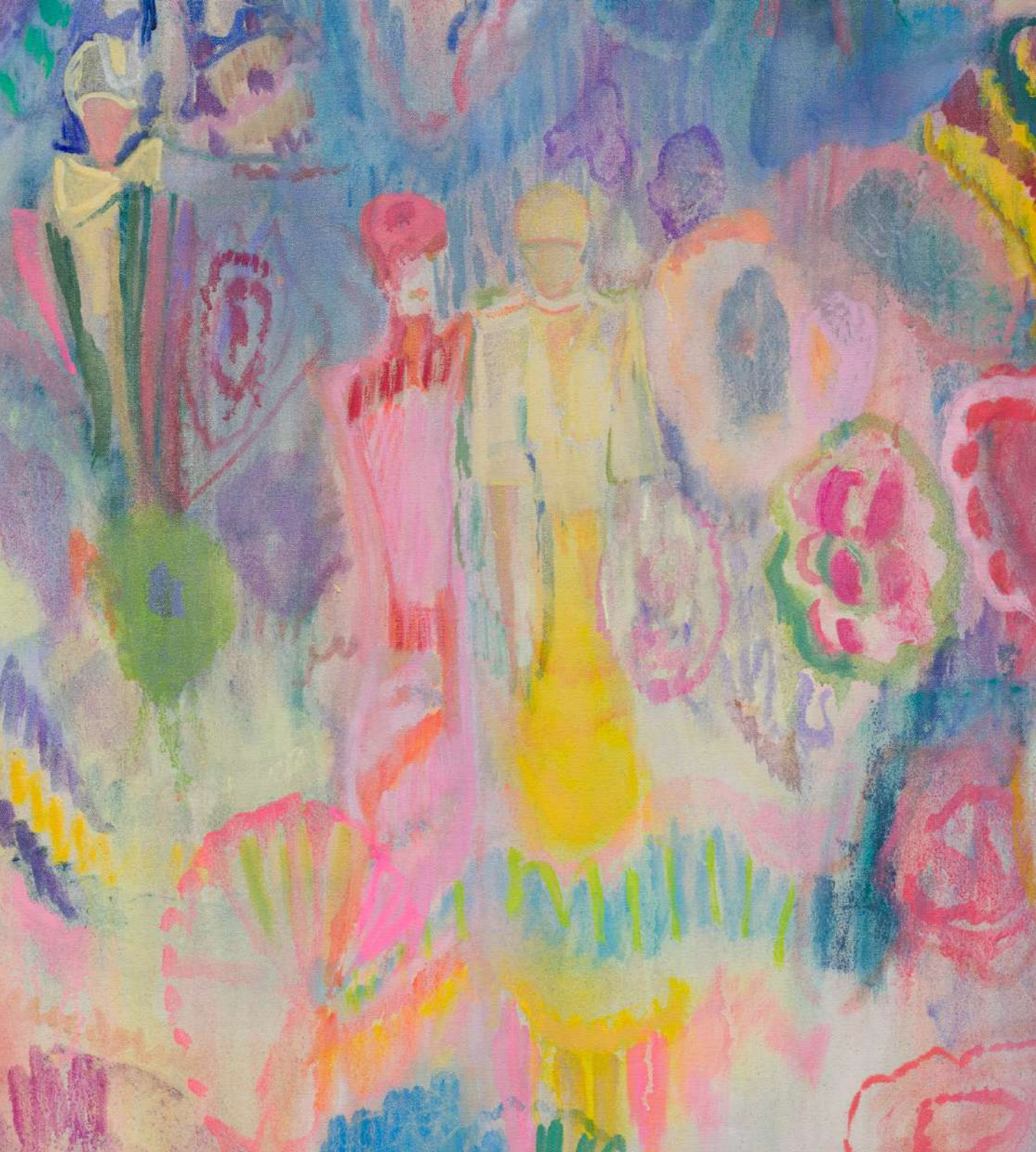
Framed: 55.2 x 71.1 cm (21 ¾ x 28 in) each

Edition 8/12

(AJG-AMe-00206)

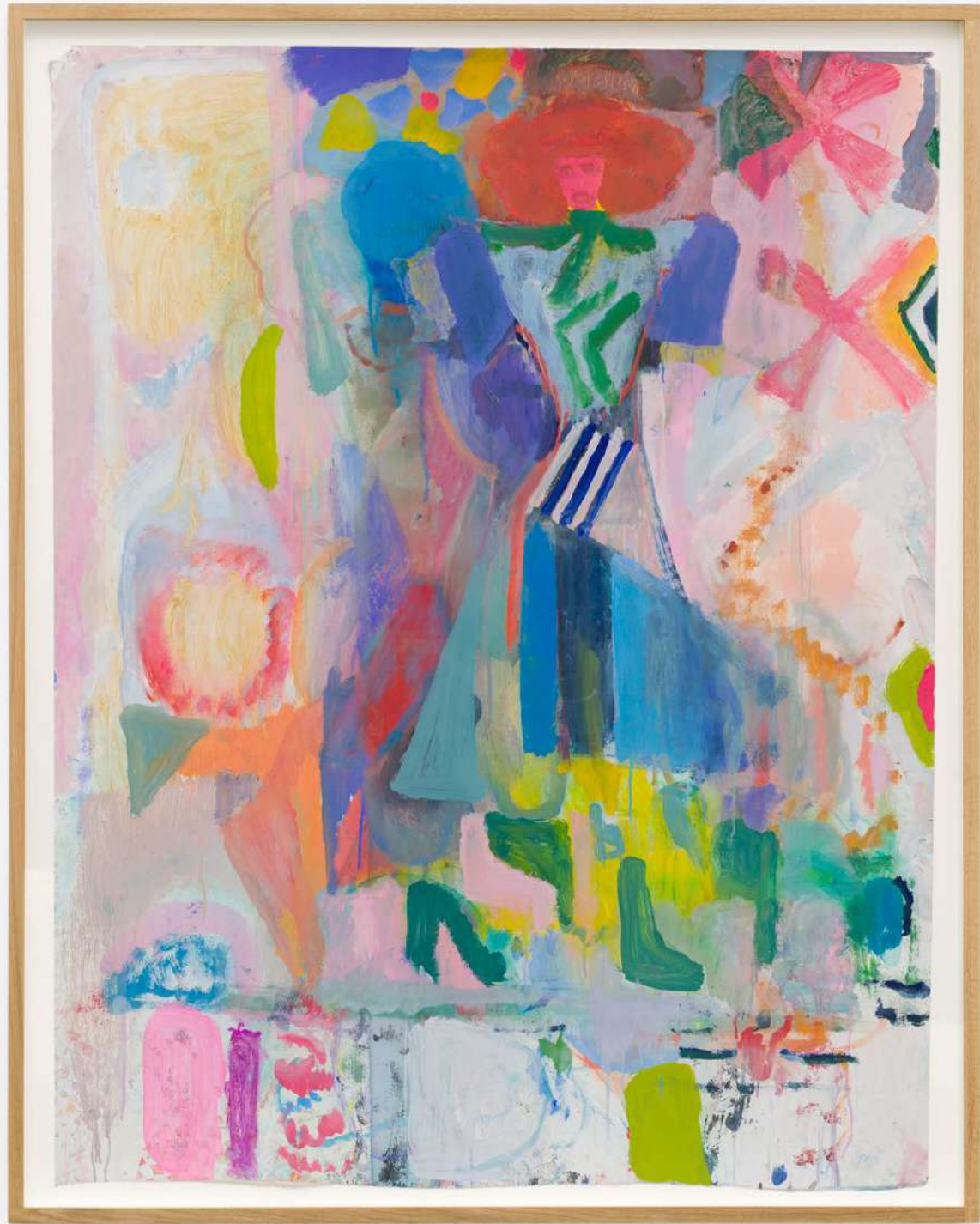
[Click here for further images
and additional information →](#)





Lorna Robertson
The taste of cherry, 2024
Oil on canvas
Framed: 142.4 x 182.4 cm (56 x 71 ¾ in)
(AJG-LR-00067)

[Click here for further images
and additional information →](#)

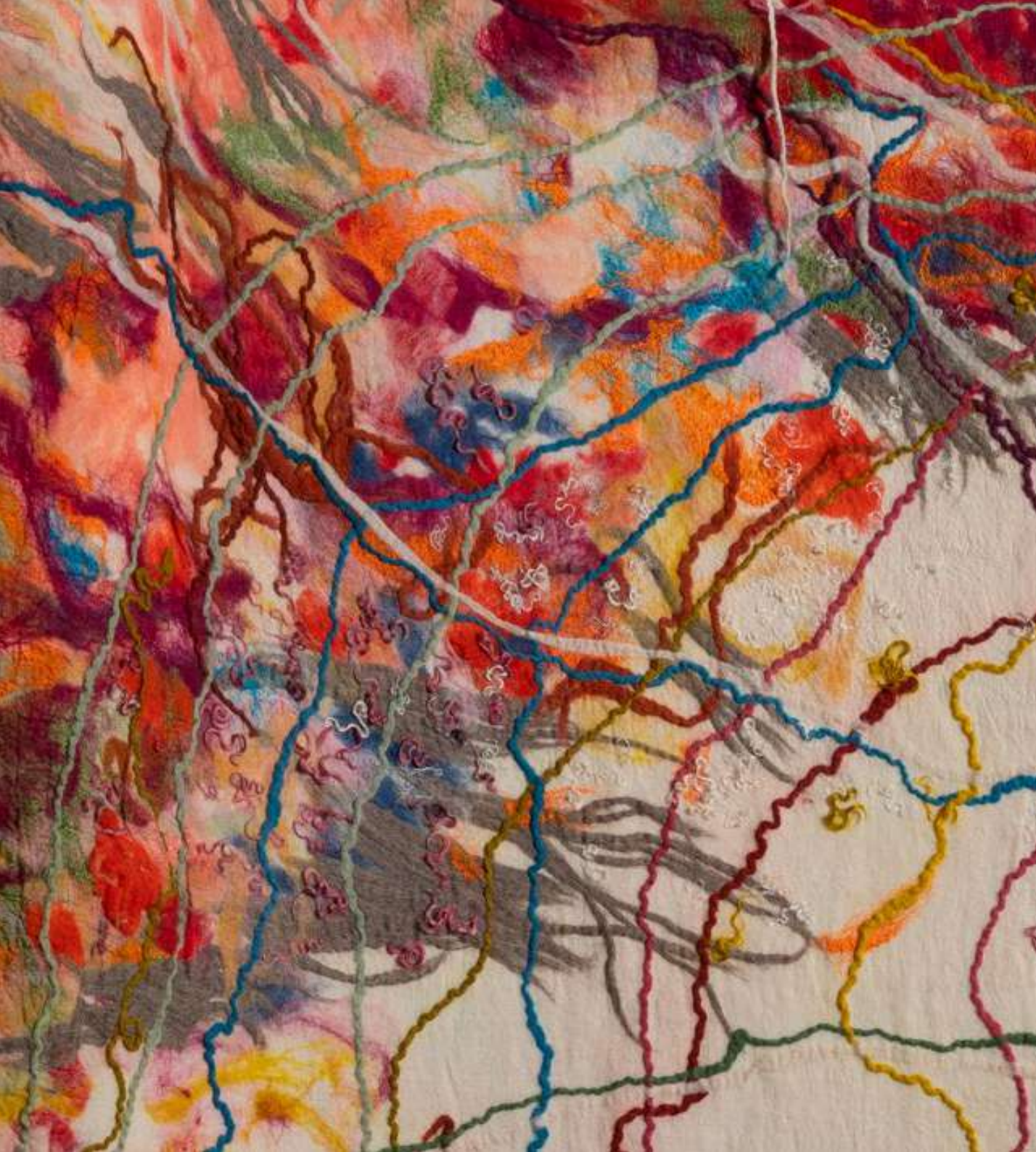




Lorna Robertson
Socks and shoes, 2023
Oil on paper
Framed: 140.8 x 110 cm (55 ³/₈ x 43 ¹/₄ in)
(AJG-LR-00003)

[Click here for further images
and additional information →](#)





Sagarika Sundaram

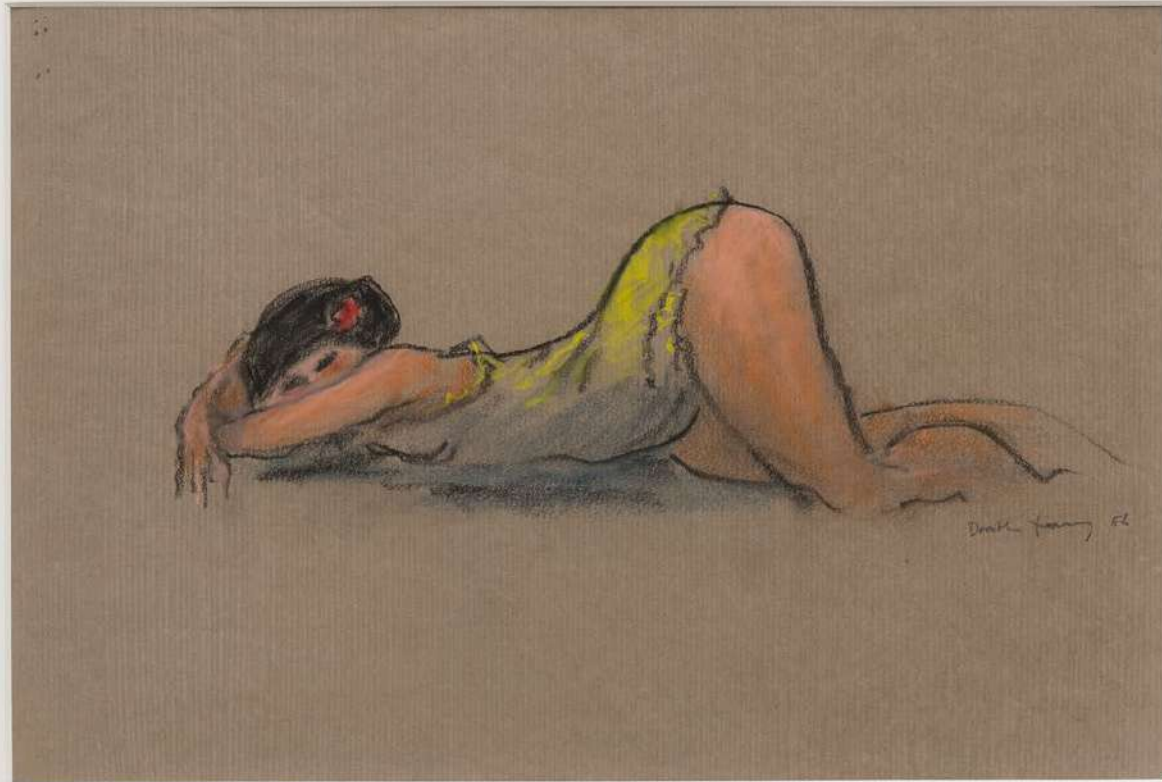
Point of View, 2024

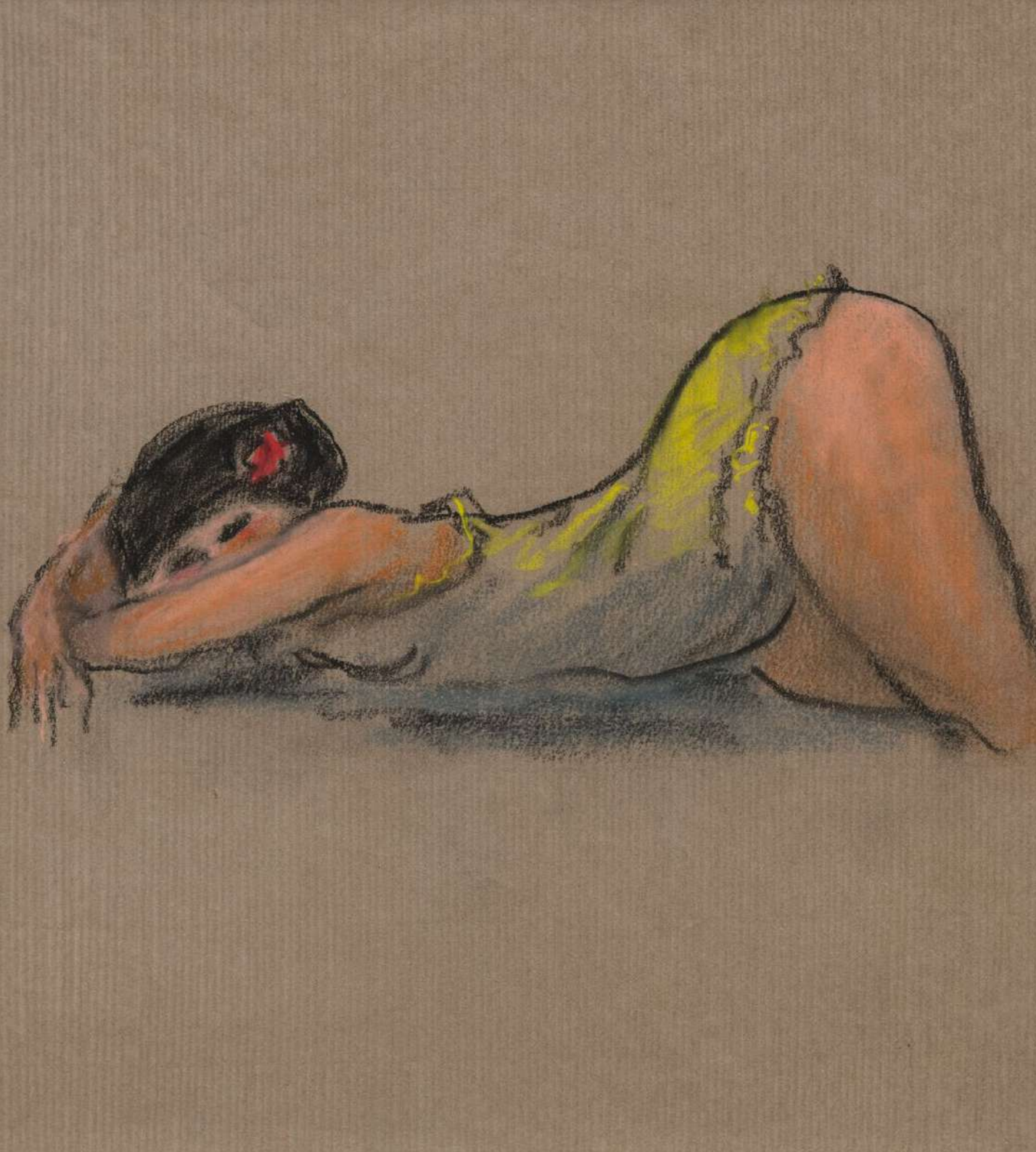
Hand-dyed wool

269.2 x 348 cm (106 x 137 in)

(AJG-SAS-00004)

[Click here for further images
and additional information →](#)





Dorothea Tanning

Bar None, 1985

Pastel on brown paper

Framed: 55.9 x 69.5 cm (22 x 27 ³/₈ in)

(AJG-DT-85.2.01)

[Click here for further images
and additional information →](#)





Dorothea Tanning
Further Chaos, 1988
Graphite, coloured inks, gouache, watercolour
on paper
Framed: 92 x 111.7 cm (36 ¼ x 44 in)
(AJG-DT-88.3.02)

[Click here for further images
and additional information →](#)



Lenore Tawney

Springing of the Waters, 1967

Ink on paper

Framed: 47.5 x 41.5 x 4 cm, 18 ³/₄ x 16 ³/₈ x 1 ⁵/₈ in)

(AJG-LT-1967.22)

[Click here for further images
and additional information →](#)





Lenore Tawney

Untitled, 1972

Paint, ink, feathers on paper

Framed: 43 x 40 x 4 cm (16 ⁷/₈ x 15 ³/₄ x 1 ⁵/₈ in)

(AJG-LT-1972.03)

[Click here for further images
and additional information →](#)





Lenore Tawney

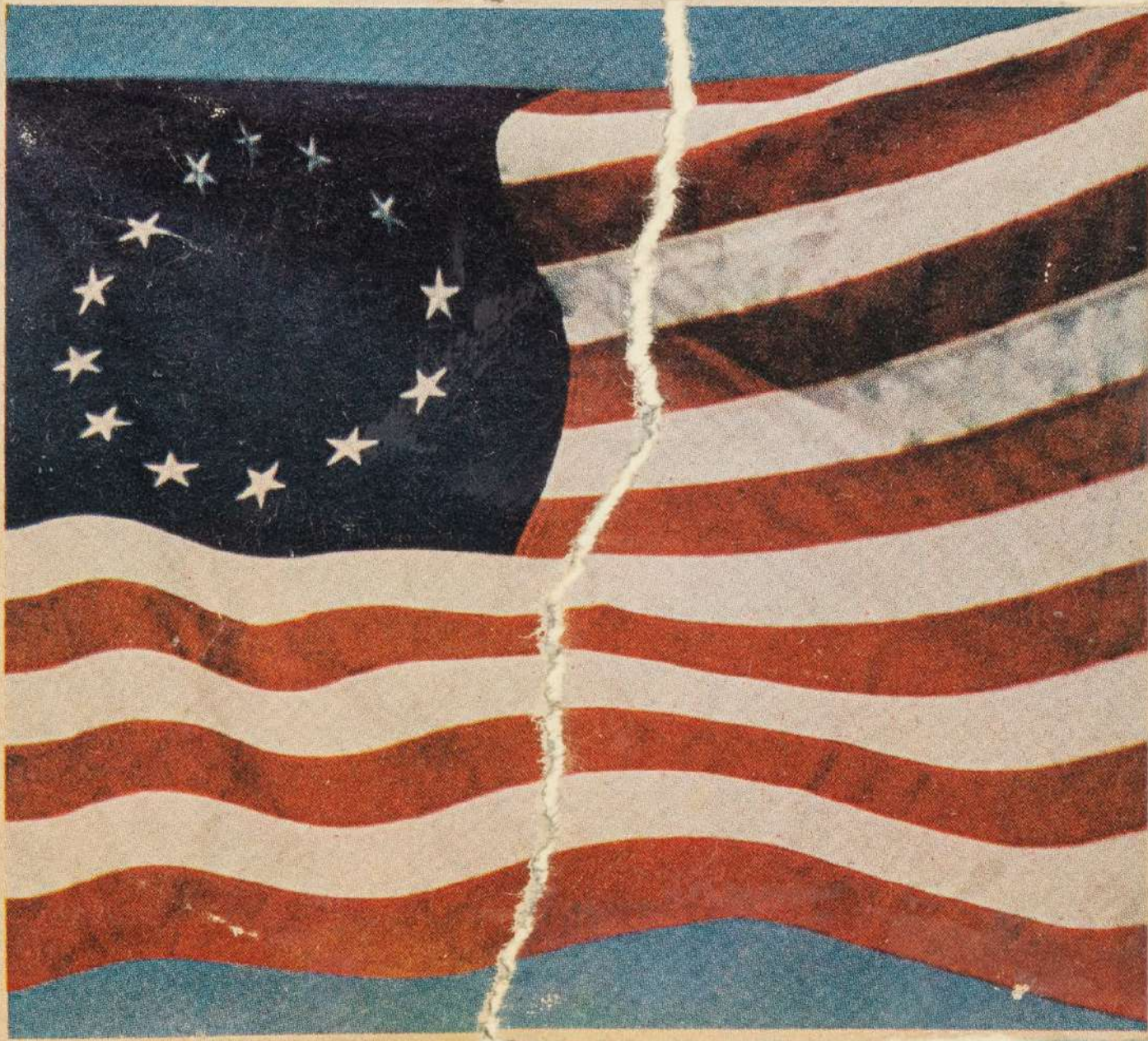
Untitled, 1975

Collage, paper, watercolour, postage stamp

Framed: 34.5 x 37.7 cm (13 ⁵/₈ x 14 ⁷/₈ in)

(AJG-LT-1975.09)

[Click here for further images
and additional information →](#)



Alius verò in cives honorabilis vocatus.
Hæc nihil sunt. Incalsum curarum confilia,
Linguaque jactantia. Ille felicissimus
625
Venis adferens
Omnium Ach
111



Erika Verzutti
Siete Granadas / Seven Pomegranates, 2023
Ceramic
232 x 56 x 56 cm (91 ³/₈ x 22 x 22 in)
Edition 3/3
(AJG-EV-00280)

[Click here for further images
and additional information →](#)





Hannah Wilke
S.O.S Starification Object Series, 1974
Silver gelatin print
Framed: 32.5 x 26.8 cm (12 ³/₄ x 10 ¹/₂ in)
(AJG-HW-00063a)

[Click here for further images
and additional information →](#)



Hannah Wilke
Untitled, 1977-81
Glazed ceramic
18 Sculptures: 45.7 x 38.1 cm (18 x 15 in), overall
(AJG-HW-00403)

[Click here for further images
and additional information →](#)









Hannah Wilke
Untitled, c.1963-65
Acrylic on canvas
Framed: 63.6 x 129.3 cm (25 1/8 x 50 7/8 in)
(AJG-HW-00455)

[Click here for further images
and additional information →](#)

Current Exhibition:

ALISON JACQUES

**LENORE TAWNEY & TOSHIKO TAKAEZU:
A REMARKABLE FRIENDSHIP**

15 November – 11 January 2025

