

The Armory Show

Gallery Baton | 215 | Selected Artworks

GALLERYBATON

SUZANNE SONG

GALLERYBATON



수잔 송 SUZANNE SONG

1974 Born in US

Lives and works in New York, US

Suzanne Song's work explores the realm of 'space,' probing its boundaries as a conceptual, non-material entity. By establishing spatial conditions aligned with her unique perceptual understanding, Song renders her paintings and installations using minimal lines and a subdued color palette. Employing techniques like trompe-l'oeil, she subtly challenges the historical pursuit of verisimilitude in painting while emphasizing the materiality of her supports. Song's geometrically abstract canvases transcend the two-dimensional plane, blurring the line between sensory perception and representation.

The interplay between color, texture, and abstract shape serves as the cornerstone of Song's artistic practice. Conceptually intricate yet aesthetically delicate, she meticulously examines the interplay between horizontal and vertical lines, as well as the dynamics of space and place. Consequently, her series of shaped canvases explore the portrayal of empty space, a theme that Song continually revisits and reinterprets throughout her career.

In this context, her recent works examine the interaction between light and canvas, capturing the nuanced manner in which light illuminates the surface, a sensation she delicately invokes by foregrounding geometrical elements in a minimalistic manner. Balancing between exterior and interior realms, reality and its representation, Song's spaces exude a timeless quality, transcending historical constraints, while simultaneously interrogating painting as a canonical form.

SELECTED SOLO EXHIBITIONS

2024 **Near Distance, Gallery Baton, Seoul, KR** [*Learn More](#)

2018 **Open Surface, Gallery Baton, Seoul, KR** [*Learn More](#)

2015 INTERVALS, Gallery Baton, Seoul, KR

2011 Interplay, Doosan Gallery, New York, US

2007 Replica, Michael Steinberg Fine Art, New York, US

SELECTED GROUP EXHIBITIONS

2024 45cm, Chapter II, Seoul, KR [*Learn More](#)

2023 **Lagrange Point, Gallery Baton, Seoul, KR** [*Learn More](#)

Faint Afterglow, Gallery Baton, Seoul, KR [*Learn More](#)

2022 Between Texts and Textiles, Bienvenu Steinberg & J, New York, US

2020 EFAbstract, EFA Project Space, New York, US

2019 Rock, Paper, Scissors, C24 Gallery, New York, US

2018 Active Beige, Foley Gallery, New York, US

2016 Twenty Sixteen, Smack Mellon Gallery, New York, US

2015 January, Mixed Greens Gallery, New York, US

The Search for The Real, DeBuck Gallery, New York, US

HONORS/ AWARDS

2008 New York Foundation for the Arts Fellow in Painting, New York, US

2000 Honor Award, George R. Bunker Award, Yale School of Art, New Haven, US

1998 Second Place, Emerging Artists, Maryland Federation of the Arts, Annapolis, US

1997 Fine Arts Undergraduate Citation Award, Clemson University, Clemson, US

SELECTED COLLECTIONS

RISD Museum, Rhode Island School of Design, US

Parkseobo Foundation, KR

Suzanne Song

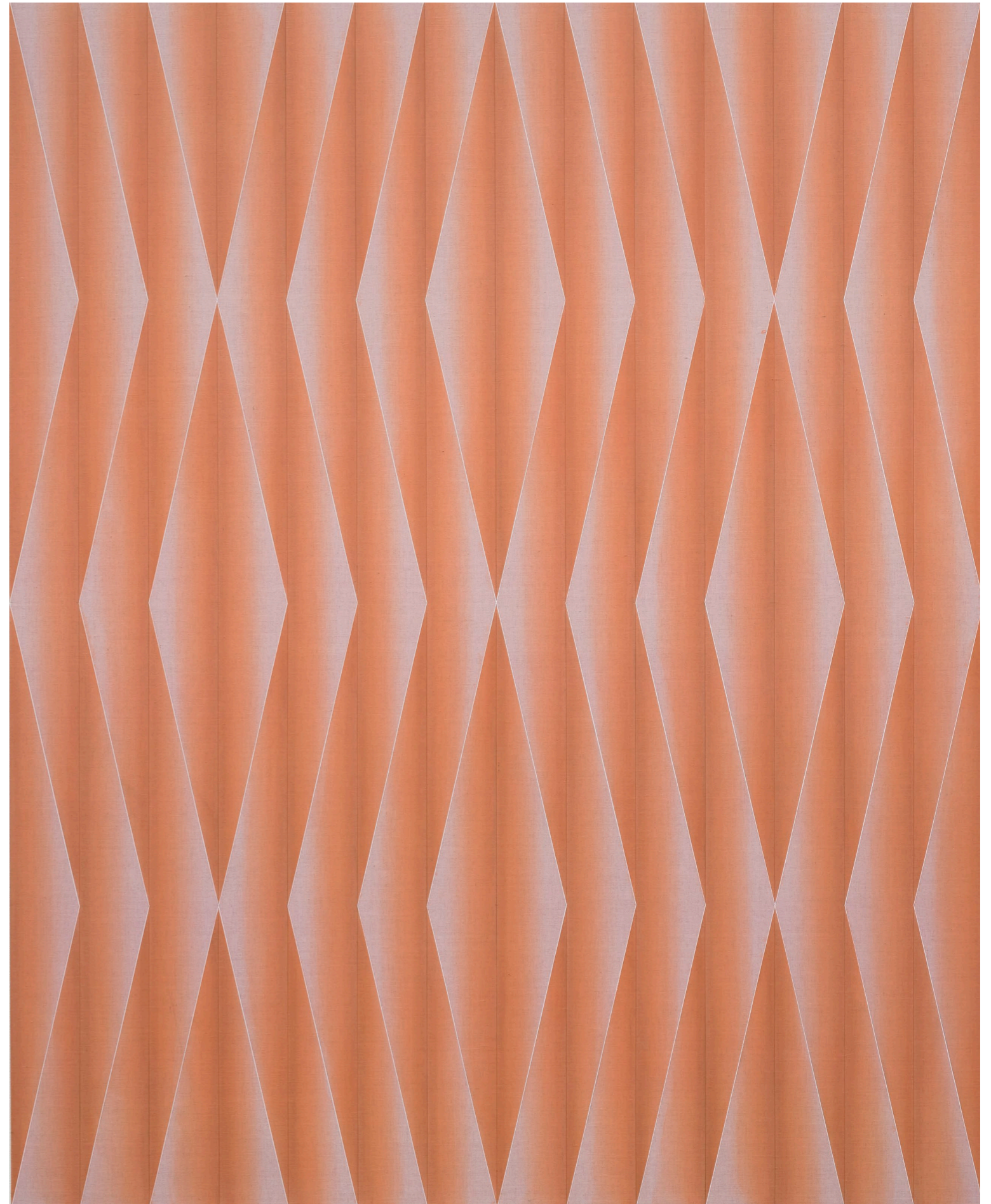
Diamond Quad Fold

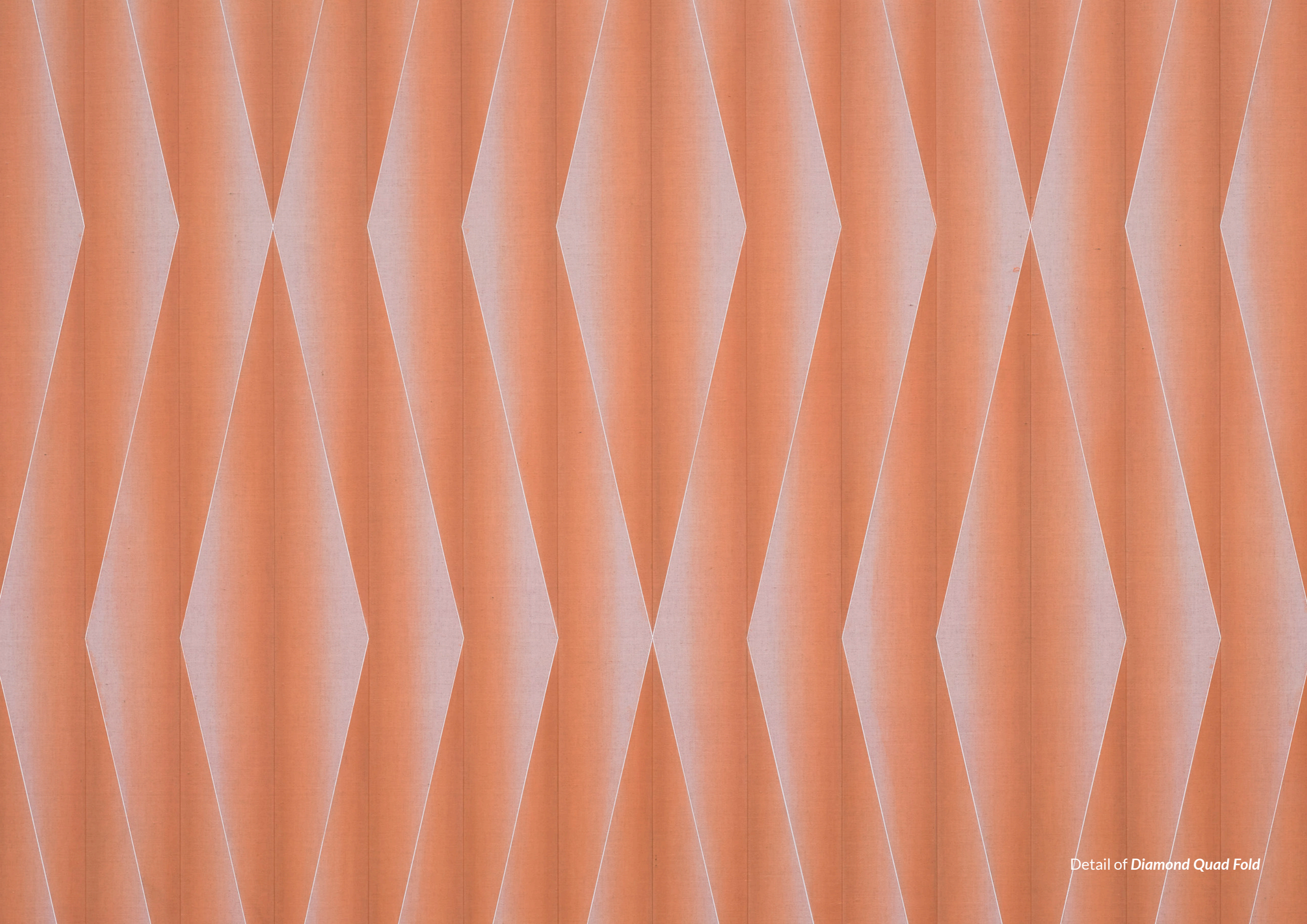
2024

acrylic pigment on linen

162 x 130 x 2.54 cm

USD 33,000





Detail of *Diamond Quad Fold*

Suzanne Song

Flip Turn

2024

acrylic pigment on linen

137 x 112 x 2.54 cm

USD 27,500



Suzanne Song

Zig Zag Zig

2024

acrylic pigment on linen

137 x 112 x 2.54 cm

USD 27,500





Suzanne Song

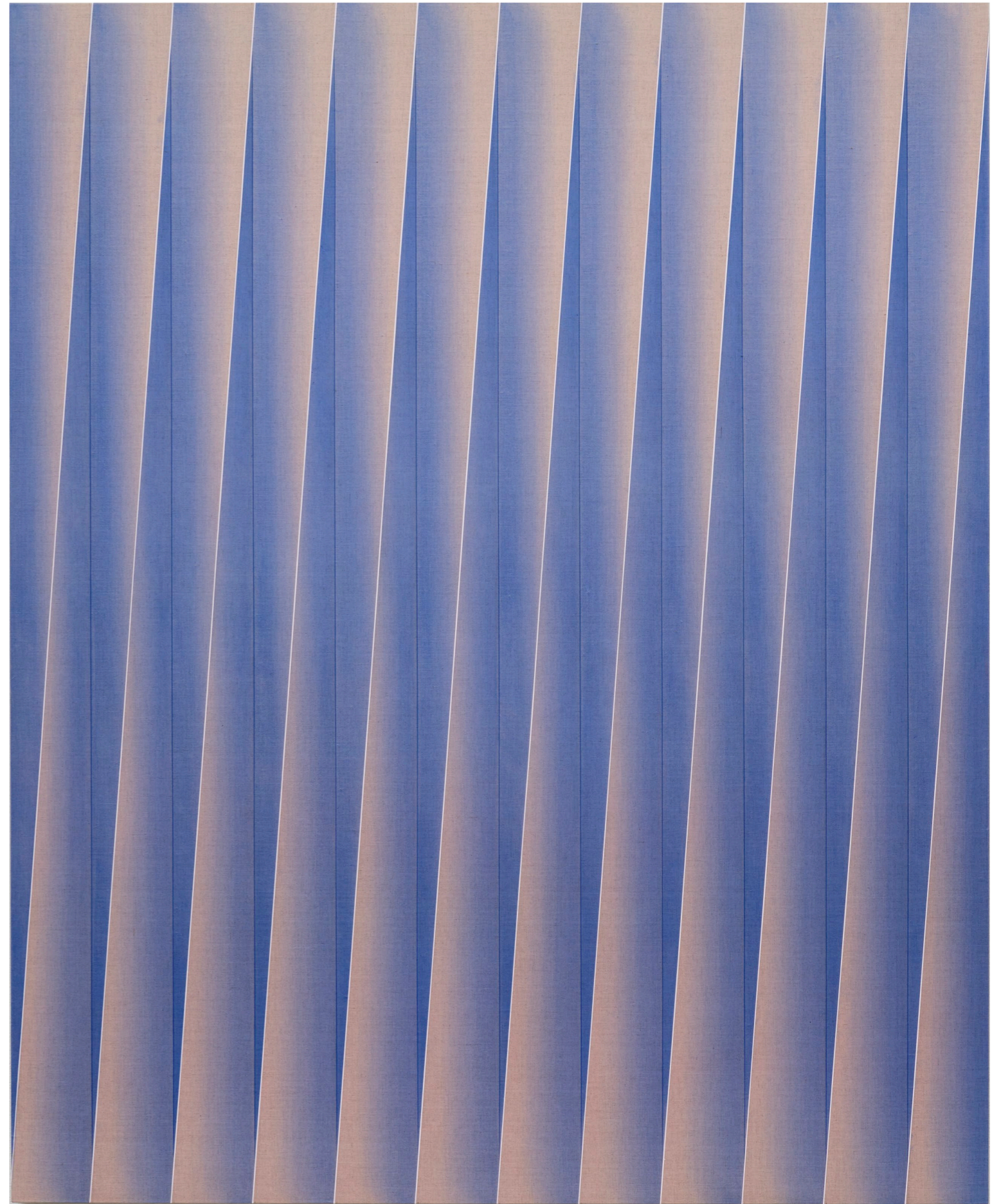
Upturn

2024

acrylic pigment on linen

137 x 112 x 2.54 cm

USD 27,500





Suzanne Song

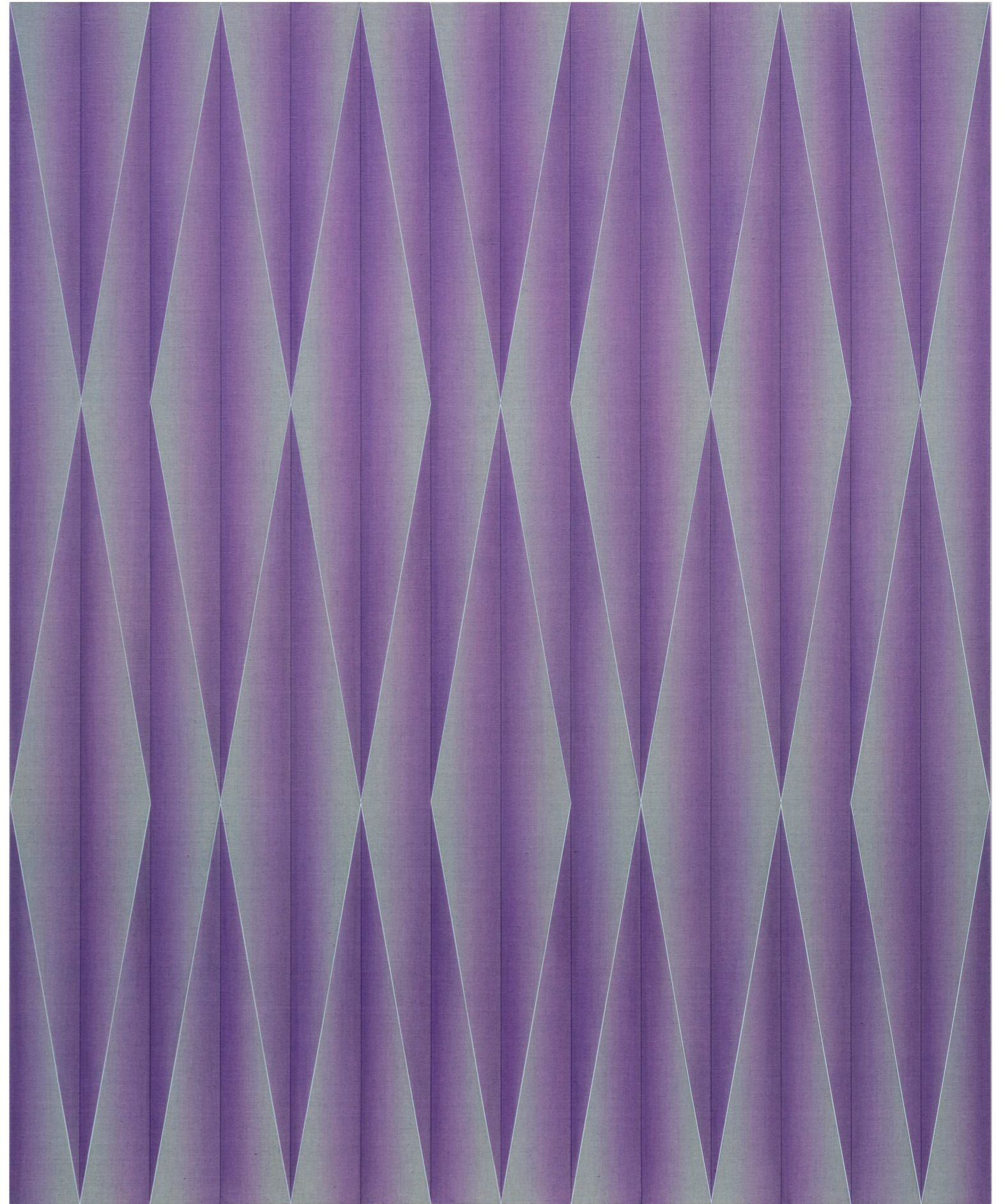
Pavé

2024

acrylic pigment on linen

137 x 112 x 2.54 cm

USD 27,500



Suzanne Song

Seam

2024

acrylic pigment on linen

127 x 104 x 2.54 cm

USD 25,000



Suzanne Song

Versus

2024

acrylic pigment on linen

125 x 99 x 2.54 cm

USD 24,000



Suzanne Song

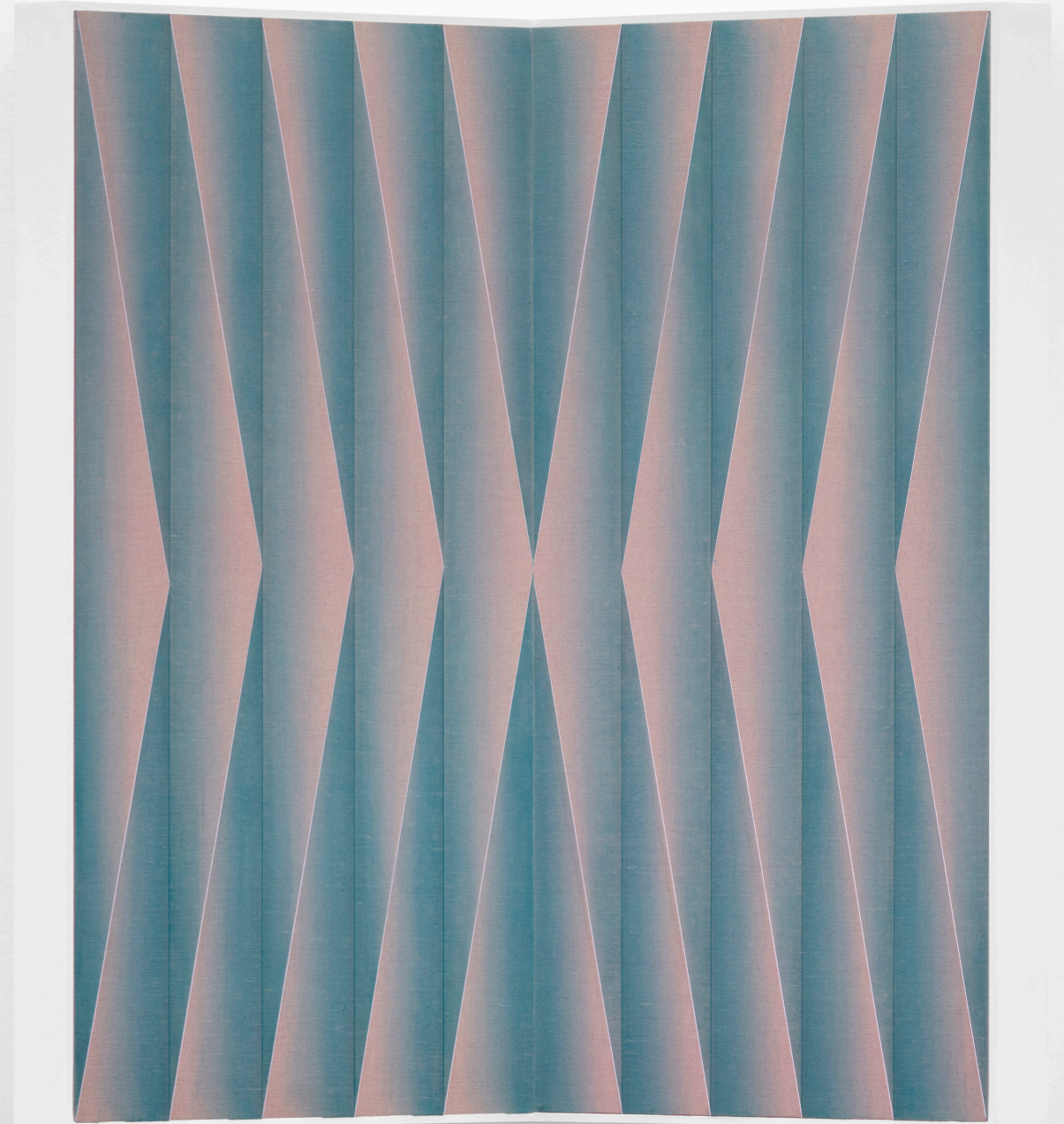
Open Mirror

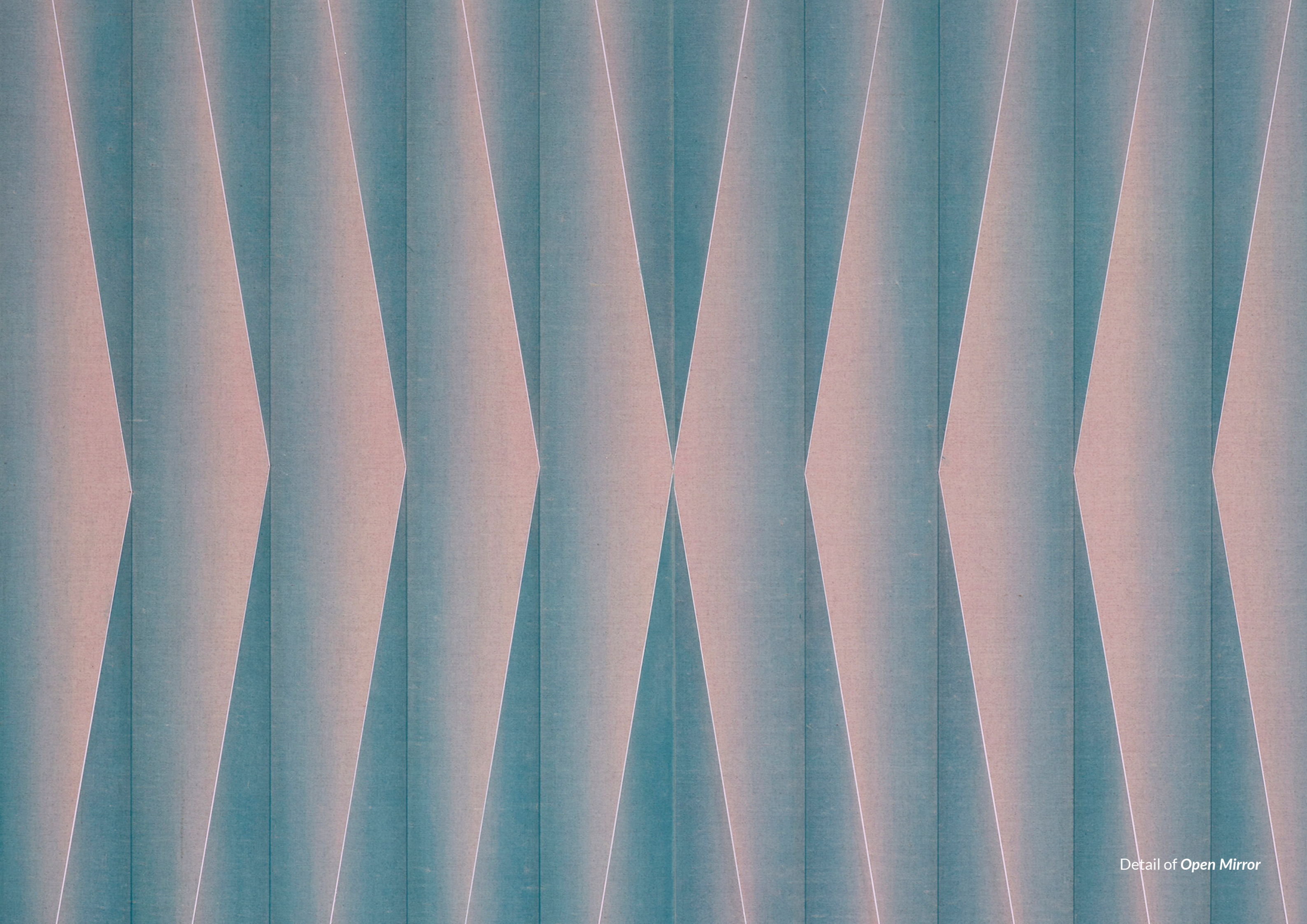
2024

acrylic pigment on linen

104.5 x 76.8 x 18 cm framed

USD 25,000





Suzanne Song

Open Array

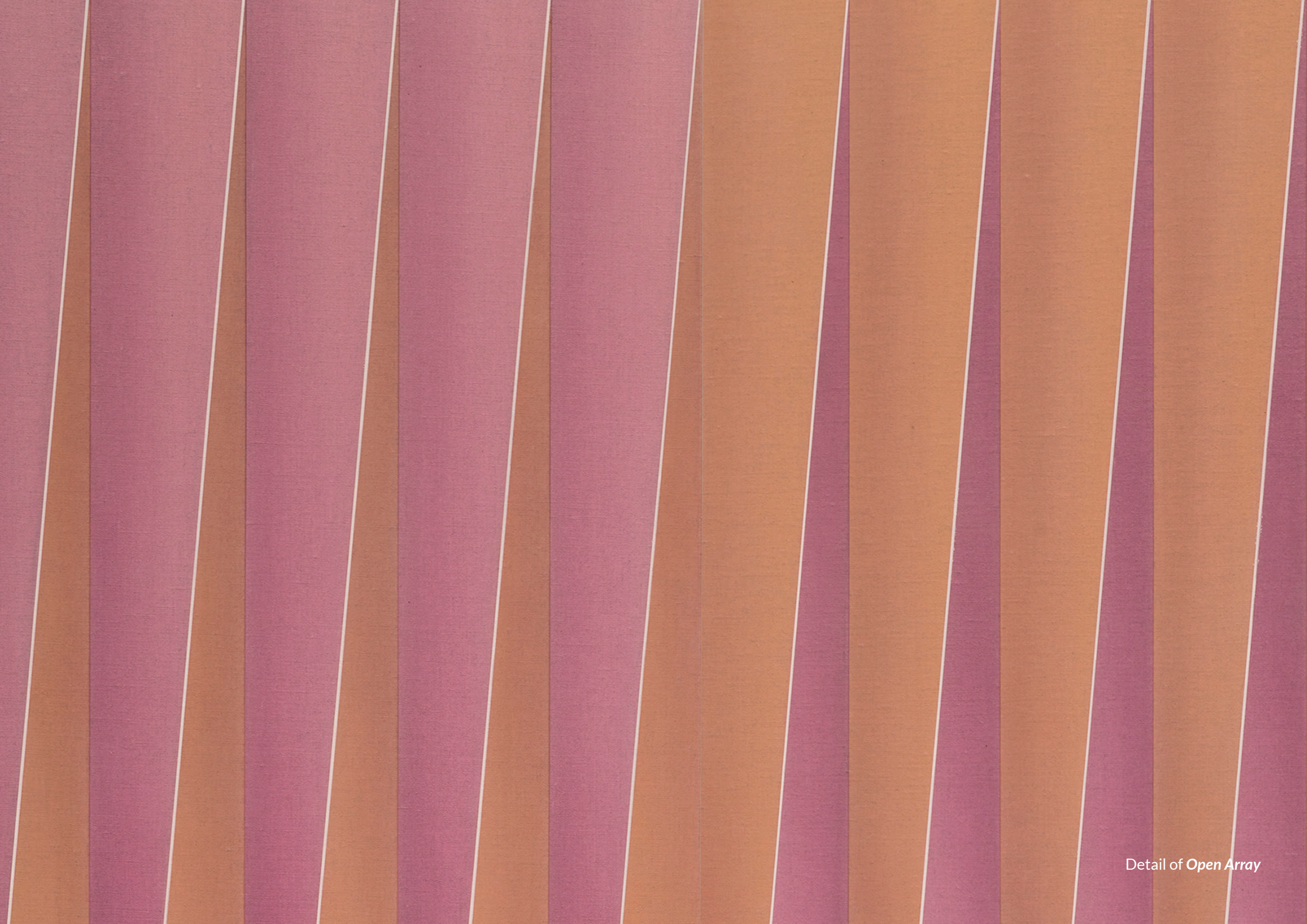
2024

acrylic pigment on linen

104.5 x 76.8 x 18 cm framed

USD 25,000





Exhibition Documentary

Suzanne Song
Near Distance

Gallery Baton, Seoul
2024. 3. 6 -4. 13

Watch Video





Installation view: Suzanne Song, 'Near Distance', Gallery Baton, Seoul, 2024



Installation view: Kim Sang Gyun and Suzanne Song, 'Lagrange Point', Gallery Baton, Seoul, 2023



Installation view: Suzanne Song, 'Open Surface', Gallery Baton, Seoul, 2018

FOR INQUIRIES

116, Dokseodang-ro, Yongsan-gu, Seoul, Korea

T +82 2 597 5701 F +82 2 597 5705

info@gallerybaton.com www.gallerybaton.com

FOLLOW US ON

[Website](#)

[YouTube](#)

[Instagram](#)

[Newsletter](#)