



Seventeen
Frieze 2024
Stand A10





Bex Massey

Tom

2024

Oil on canvas

115 x 80 cm (47 x 33 inches)

£8,500 + vat



Bex Massey presents the viewer with isolated objects depicted in a soft realism, rendered in oil under an even light. Images are presented in relation to each other, two per work, a painted object depicted beside its partner to form a visual echo. Subtle parallels in the structure of each image create connections between the paired objects. The image pairings within these paintings encourage allusion to female bodies, building an underlying sexual tension imbued by the artist into quotidian objects. This is further extended by an implied auditory element to the images, the scenes contain the potential of noise.

Massey's previous works and exhibitions have engaged the codes and history of queer culture, along with markers of selfhood and North of England identity. Massey cites society's persistent, habitual reminder that female + female = incorrect, that existence outside of the approval and verification of the male gaze is inappropriate. Her recent fertility journey with her partner has brought this into sharp focus, and this process is alluded to in the title of each piece, named as they are after the potential sperm donors they have considered. This additional layer encourages the viewer to see the sexual imagery through a reproductive lens.





Bex Massey

Cryobank Ben

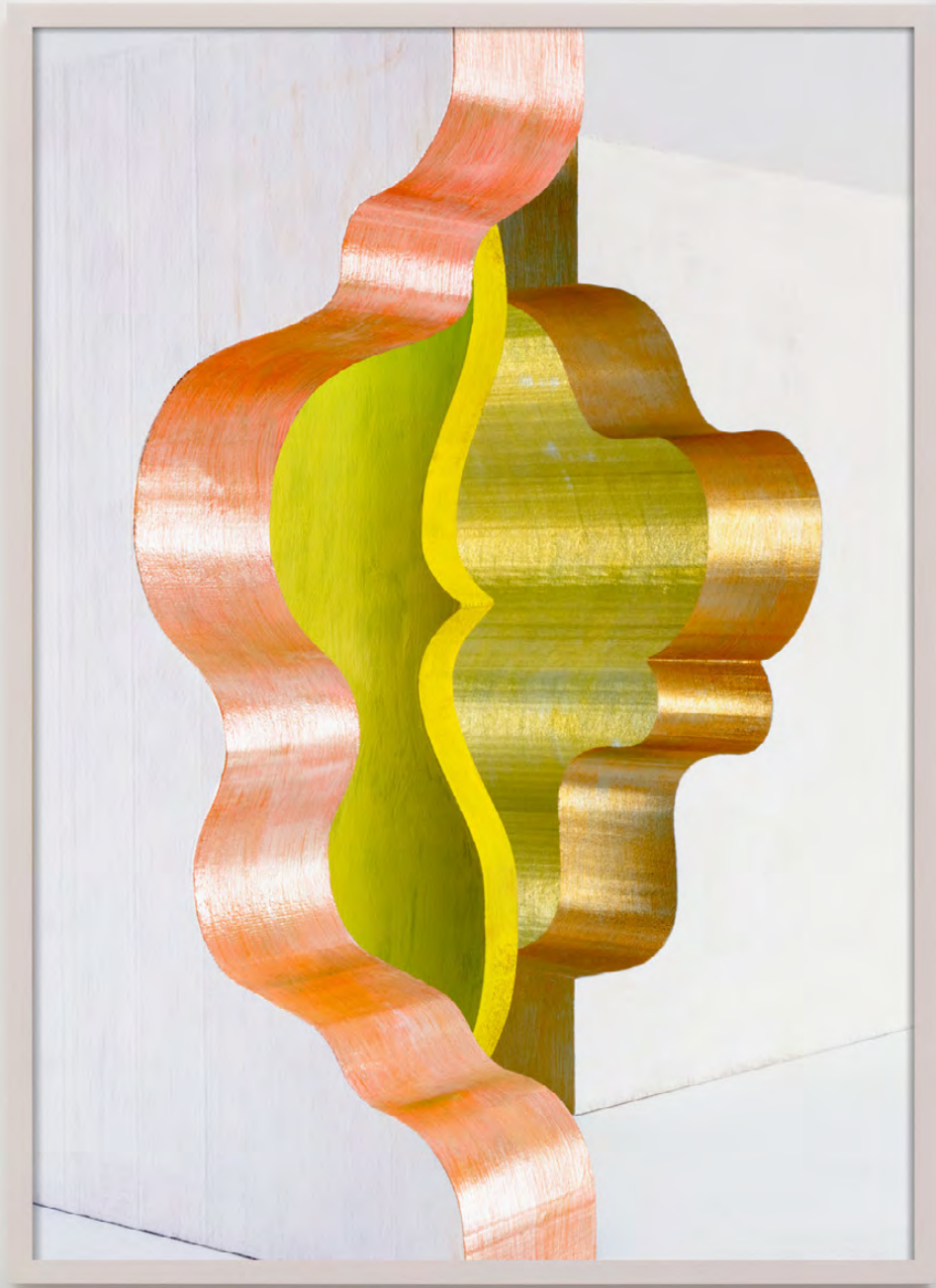
2024

Oil on canvas

100 x 75 cm (39 ½ x 29 ½ inches)

£7,500 + vat







Erin O'Keefe

Chrysalis

2024

Unique archival pigment print on Hahnemühle Photo Rag paper mounted to Dibond aluminium, framed

108 x 78 cm (42 ½ x 30 ½ inches)

\$16,000 + 8.334% vat





Erin O'Keefe

Loud and Clear

2024

Unique archival pigment print on Hahnemühle Photo Rag paper
mounted to Dibond aluminium, framed

108 x 78 cm (42 1/2 x 30 1/2 inches)

\$16,000 + 8.334% vat





Erin O'Keefe

Squeeze

2024

Unique archival pigment print on Hahnemühle Photo Rag paper
mounted to Dibond aluminium, framed

108 x 78 cm (42 1/2 x 30 1/2 inches)

\$16,000 + 8.334% vat





Nina Davies

Error Gap

2024

Wax cast, tracking unit, smart phone with video file, digital print on acrylic, brackets

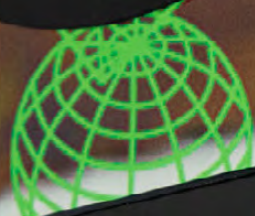
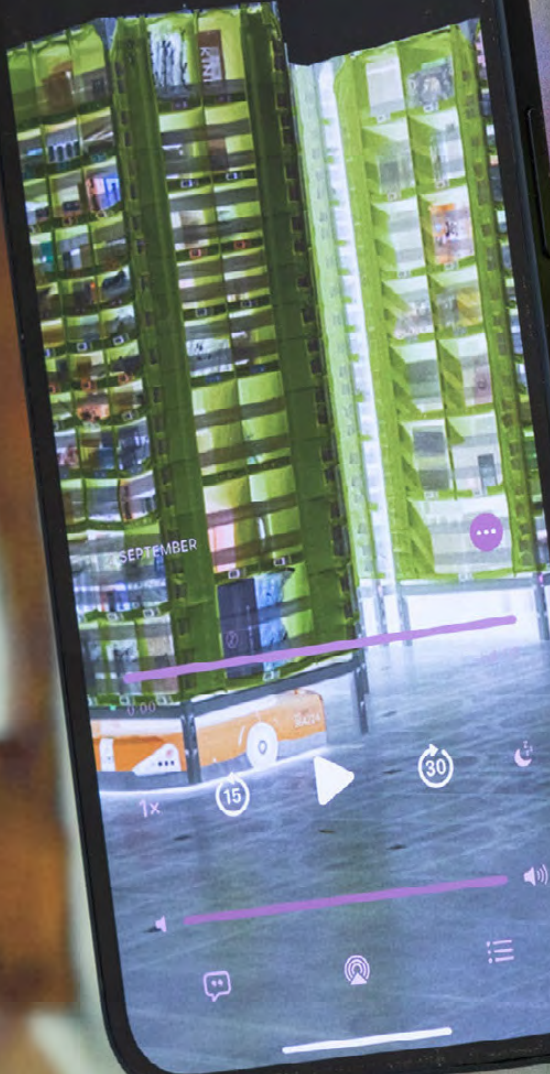
100 x 40 x 35 cm (40 x 16 x 14 inches)

10 minutes duration

£ 7,500 + 8.334%



10:14





LAWS OF MOTION IN A CARTOON LANDSCAPE

I. ANY BODY SUSPENDED IN SPACE WILL REMAIN IN SPACE UNTIL MADE AWARE OF ITS SITUATION.

II. ANY BODY IN MOTION WILL TEND TO REMAIN IN MOTION UNTIL SOLID MATTER INTERVENES SUDDENLY.

III. ANY BODY PASSING THROUGH SOLID MATTER WILL LEAVE A PERFORATION CONFORMING TO ITS PERIMETER.

IV. THE TIME REQUIRED FOR AN OBJECT TO FALL TWENTY STOREYS IS GREATER THAN OR EQUAL TO THE TIME IT TAKES FOR WHOEVER KNOCKED IT OFF THE LEDGE TO SPIRAL DOWN TWENTY FLIGHTS TO ATTEMPT TO CAPTURE IT UNBROKEN.

V. ALL PRINCIPLES OF GRAVITY ARE NEGATED BY FEAR.

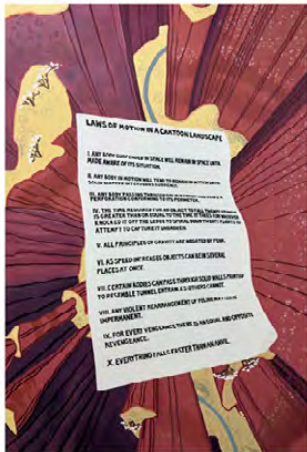
VI. AS SPEED INCREASES OBJECTS CAN BE IN SEVERAL PLACES AT ONCE.

VII. CERTAIN BODIES CAN PASS THROUGH SOLID WALLS PAINTED TO RESEMBLE TUNNEL ENTRANCES; OTHERS CANNOT.

VIII. ANY VIOLENT REARRANGEMENT OF FELINE MATTER IS IMPERMANENT.

IX. FOR EVERY VENGEANCE THERE IS AN EQUAL AND OPPOSITE REVENGEANCE.

X. EVERYTHING FALLS FASTER THAN AN ANVIL.



Andy Holden

I Never Studied Law

2024

Emulsion on canvas

150 x 100 cm (59 x 39 1/2 inches)

£20,000 + vat

This work relates to Holden's celebrated film and performance - *The Laws of Motion in the Cartoon Landscape*,

<https://www.frieze.com/article/laws-motion>

<https://andyholdenartist.com/laws-of-motion-in-a-cartoon-landscape>





Gabriele Beveridge

Cords

2024

Hand-blown glass

Unique

70 x 20 x 30 cm (27 ½ x 8 x 12 inches)

£10,000 + vat







Betsy Bradley

Saint

2024

Acrylic on interlining

49 x 54 cm (19 ¼ x 21 ¼ inches)

£4,500 + 8.334% vat





Betsy Bradley

Goldfish

2024

Acrylic, spray paint and rain water on voile

120 x 163 cm (47 1/4 x 64 inches)

£10,000 + 8.334% vat









Betsy Bradley

Starlight

2022

Acrylic and sea water on muslin

140 x 100 cm (55 x 39 ½ inches)

£8,000 + 8.334% vat







Gabriel Hartley

First Rainbow

2024

Natural pigment and binder on cotton

46 x 65 cm (18 x 25 1/2 inches)

£6,500 + vat





Gabriel Hartley

Behind the studio

2024

Natural pigment and binder on cotton

131 x 97.5 (51 ½ x 38 ½ inches)

£11,000 + vat





Gabriel Hartley

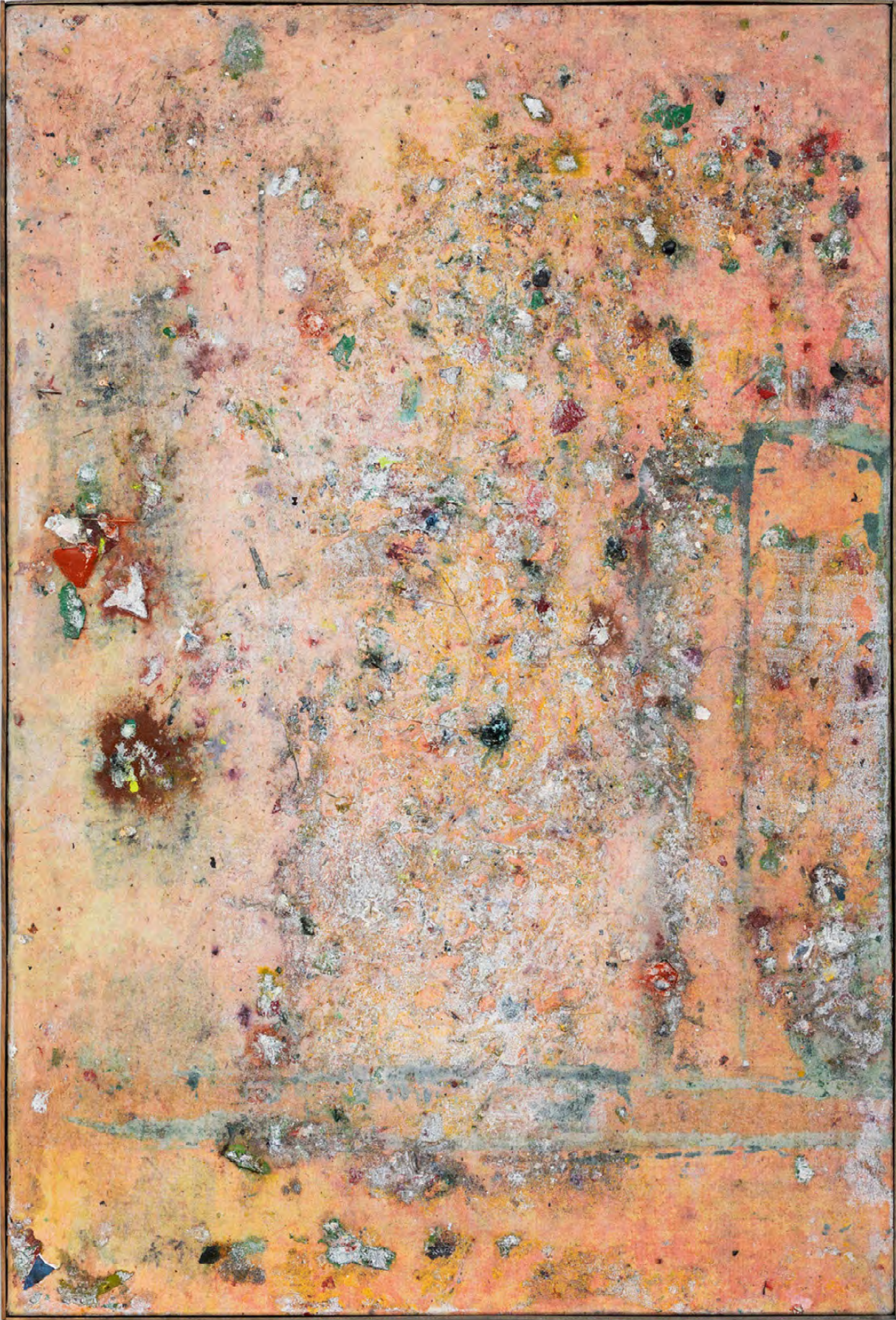
Dew

2024

Natural pigment and binder on cotton

91.5 x 117 cm (36 x 46 inches)

£10,000 + vat





Gabriel Hartley

Recently

2024

Natural pigment and binder on cotton

61 x 41.5 cm (24 x 16 ½ inches)

£6,500 + vat





Gabriel Hartley

Cormorants

2024

Natural pigment and binder on cotton

22.5 x 28 cm (8 ³/₄ x 11 inches)

£3,500 + vat





Gabriel Hartley

Linger

2024

Natural pigment and binder on cotton

41.5 x 46 cm (16 x 18 inches)

£5,500 + vat





Gabriel Hartley

Trape

2024

Natural pigment and binder on cotton

22.5 x 28 cm (8 ¾ x 11 inches)

£3,500 + vat





Jill Tate

Through and out

2024

Oil on board

120 x 150 cm (47 x 59 inches)

£14,000 + vat







Jill Tate

Reduced

2024

Oil on wood

40 x 50 cm (16 x 19 ³/₄ inches)

£3,000 + vat







Jill Tate

From the top

2024

Oil on board

150 x 120 cm (59 x 47 inches)

£14,000 + vat



