

WHITE CUBE



ART BASEL  
MIAMI BEACH

4 – 8 December 2024

ETEL ADNAN  
DAVID ALTMEJD  
MICHAEL ARMITAGE  
CHRISTINE AY TJOE  
JULIE CURTISS  
LYNNE DREXLER  
TRACEY EMIN  
SARA FLORES  
THEASTER GATES  
ANTONY GORMLEY  
DAVID HAMMONS  
AL HELD  
DAMIEN HIRST  
MARGUERITE HUMEAU  
RICHARD HUNT  
IMI KNOEBEL

DANICA LUNDY  
CHRISTIAN MARCLAY  
TIONA NEKKIA MCCLODDEN  
BEATRIZ MILHAZES  
SARAH MORRIS  
ALBERT OEHLER  
GABRIEL OROZCO  
PARK SEO-BO  
HOWARDENA PINDELL  
CINGA SAMSON  
ILANA SAVDIE  
SYLVIA SNOWDEN  
ALMA THOMAS  
FRED TOMASELLI  
DANH VO  
JEFF WALL

Stand C8  
Miami Beach Convention Center  
1901 Convention Center Drive  
Miami Beach, FL 33139

# SYLVIA SNOWDEN

*Clarene Martin*

1978–82

Acrylic and oil pastel on Masonite

244.5 × 122.2 cm | 96 ¼ × 48 ⅞ in.

249.9 × 127.6 × 6.4 cm | 98 ⅜ × 50 ¼ × 2 ½ in. (framed)

USD 450,000 *plus applicable taxes*

Click [HERE](#) to view a video of this work





DAVID HAMMONS

*Rock Head*

2000

Hair, rock and metal stand

38.1 × 25.4 × 22.8 cm | 15 × 10 × 9 in.

Price upon application







CHRISTINE AY TJOE

*Mischievous Player*

2016

Oil on canvas

200 × 230 cm | 78 ¾ × 90 ⅝ in.

Price upon application

Click [HERE](#) to view a video of this work





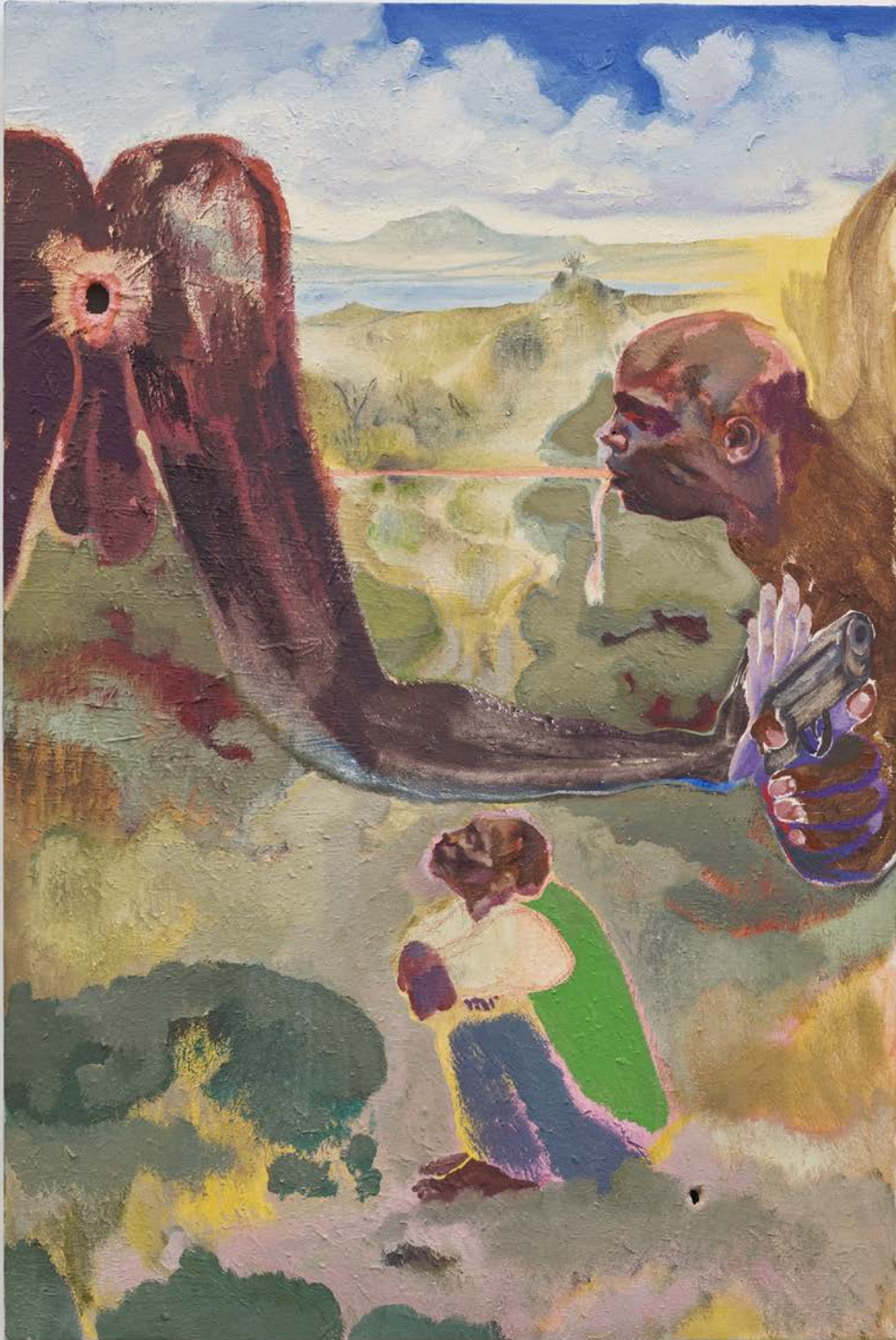


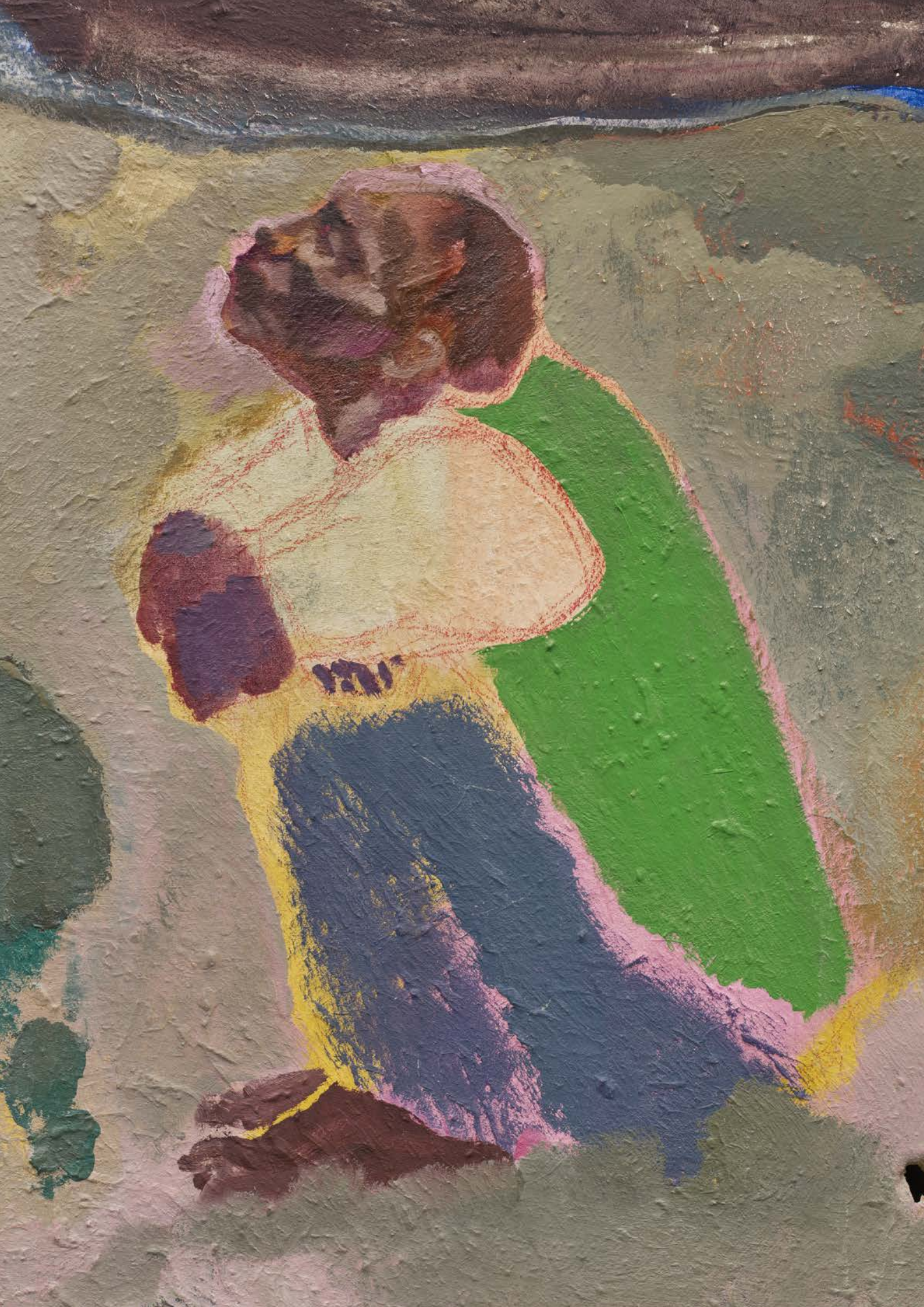
MICHAEL ARMITAGE

*Personal Thoughts (Asshole)*  
2022

Oil on Lubugo bark cloth  
150 × 100 cm | 59 1/6 × 39 3/8 in.

USD 700,000 *plus applicable taxes*





JEFF WALL

*Insomnia*

1994

Transparency in lightbox

Edition of 2 and 1 AP

172 × 213.5 cm | 67 <sup>1</sup>/<sub>16</sub> × 84 <sup>1</sup>/<sub>16</sub> in.

193.5 × 233.5 × 22 cm | 76 <sup>3</sup>/<sub>16</sub> × 91 <sup>15</sup>/<sub>16</sub> × 8 <sup>1</sup>/<sub>16</sub> in. (framed)

Price upon application



Following his solo exhibition at the Beyeler Foundation, White Cube is pleased to present a major solo exhibition 'Life in Pictures', showcasing 44 works by Jeff Wall. The show will run through January 2025. Click [HERE](#) to view the exhibition.





ALBERT OEHLER

*Untitled*

2014

Oil on board

170 × 210 cm | 66 <sup>15</sup>/<sub>16</sub> × 82 <sup>1</sup>/<sub>16</sub> in.

USD 1,450,000 *plus applicable taxes*

Click [HERE](#) to view a video of this work







MARGUERITE HUMEAU

*Skera (The Conference in the Air IV-III "Golden Light")*  
2024

Dyed, laser cut, silk single organza, cotton, wool, beeswax, waxed wool felt, 3D printed polycarbonate, hand blown glass, acrylic, epoxy resin, fiberglass, laser cut steel and zinc-passivated steel  
200 × 90 × 93 cm | 78 <sup>3</sup>/<sub>4</sub> × 35 <sup>7</sup>/<sub>16</sub> × 36 <sup>5</sup>/<sub>8</sub> in.

GBP 175,000 *plus applicable taxes*



In addition to her current participation in the Gwangju Biennale in South Korea, Marguerite Humeau will open a major solo exhibition at ICA Miami, Florida, on 3 December 2024. Titled 'skay-', the exhibition will present an immersive installation composed of ten newly commissioned sculptures and one video work.







MARGUERITE HUMEAU

Above: *Life in a Pile of Compost II*

Below: *Life in a Pile of Compost III*

Each:

2024

Pigment and charcoal on paper

100 × 140 cm | 39  $\frac{3}{8}$  × 55  $\frac{1}{8}$  in.

102.5 × 142.5 × 6 cm | 40  $\frac{3}{8}$  × 56  $\frac{1}{8}$  × 2  $\frac{3}{8}$  in. (framed)

Each: GBP 40,000 *plus applicable taxes*



# ALMA THOMAS

*A Bed of Red Azaleas*

1968

Acrylic on canvas

61 × 76.2 cm | 24 × 30 in.

64.4 × 79.4 × 5.1 cm | 25 3/8 × 31 1/4 × 2 in. (framed)

Price upon application

Click [HERE](#) to view a video of this work



White Cube is pleased to present the winter Salon work, *A Bed of Red Azaleas* (1968) by Alma Thomas.



TRACEY EMIN

*Without conscience*

2014

Bronze

Edition of 6 and 2 APs

30.5 × 40.6 × 81.3 cm | 12 × 16 × 32 in.

GBP 220,000 *plus applicable taxes*





Honoured with a damehood earlier this year for her services to art, Tracey Emin is set to open major solo international survey exhibitions at both the Palazzo Strozzi in Florence, Italy, and the Yale Center for British Art in New Haven, Connecticut, in spring 2025.



HOWARDENA PINDELL

*Untitled #28 (Blood Moon)*

2024

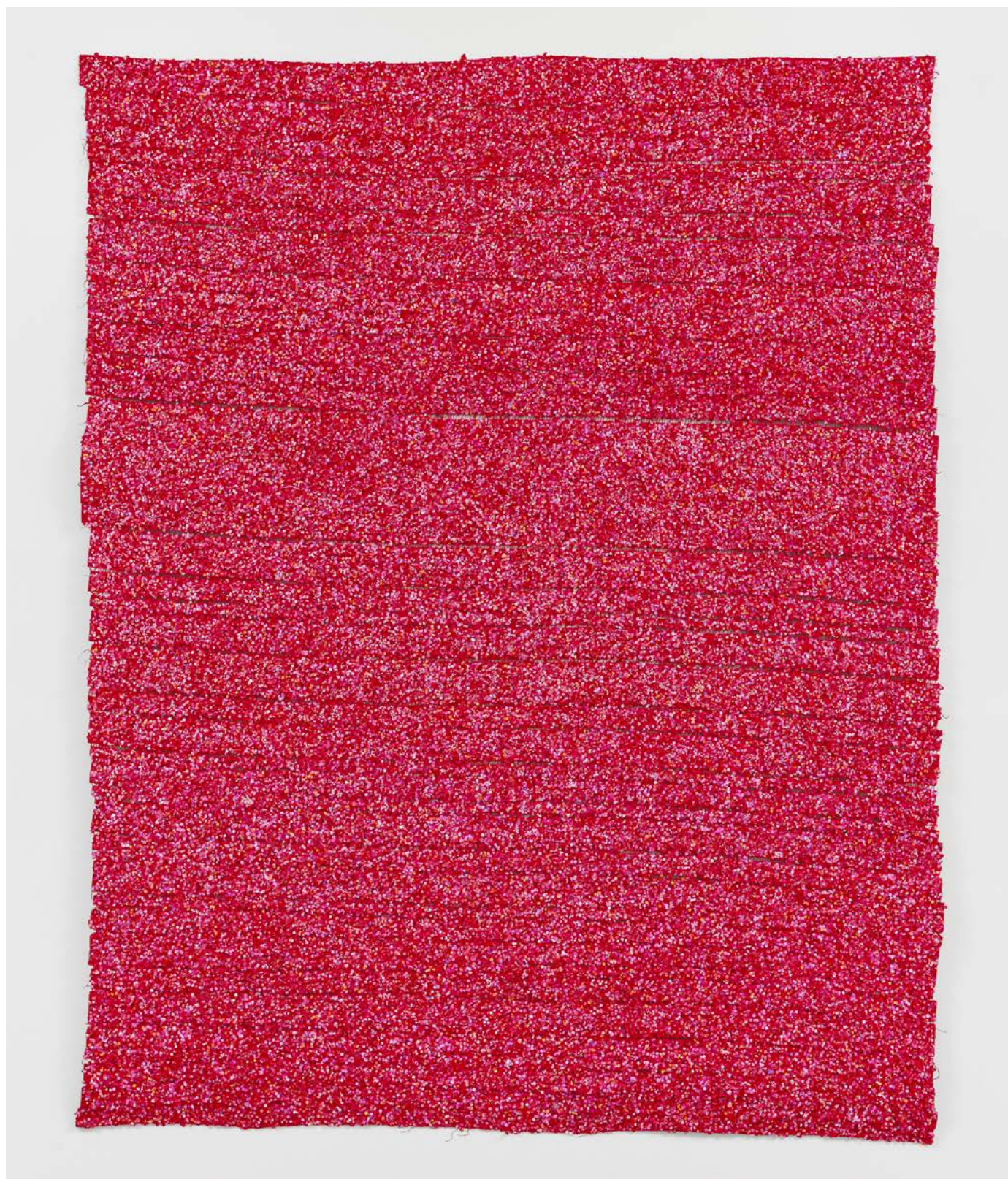
Mixed media on canvas

260.4 × 205.7 cm | 102 ½ × 81 in.

USD 875,000 *plus applicable taxes*

Click [HERE](#) to view a video on Pindell in the studio

Click [HERE](#) to view a video of this work



White Cube Hong Kong is pleased to present a solo exhibition of new paintings by American artist Howardena Pindell, open until 8 January 2025. Click [HERE](#) to view the exhibition.



LYNNE DREXLER

*Tribute*

1963

Oil on canvas

96.5 × 146.1 cm | 38 × 57 ½ in.

101.6 × 152.4 × 5.1 cm | 40 × 60 × 2 in. (framed)

USD 800,000 *plus applicable taxes*

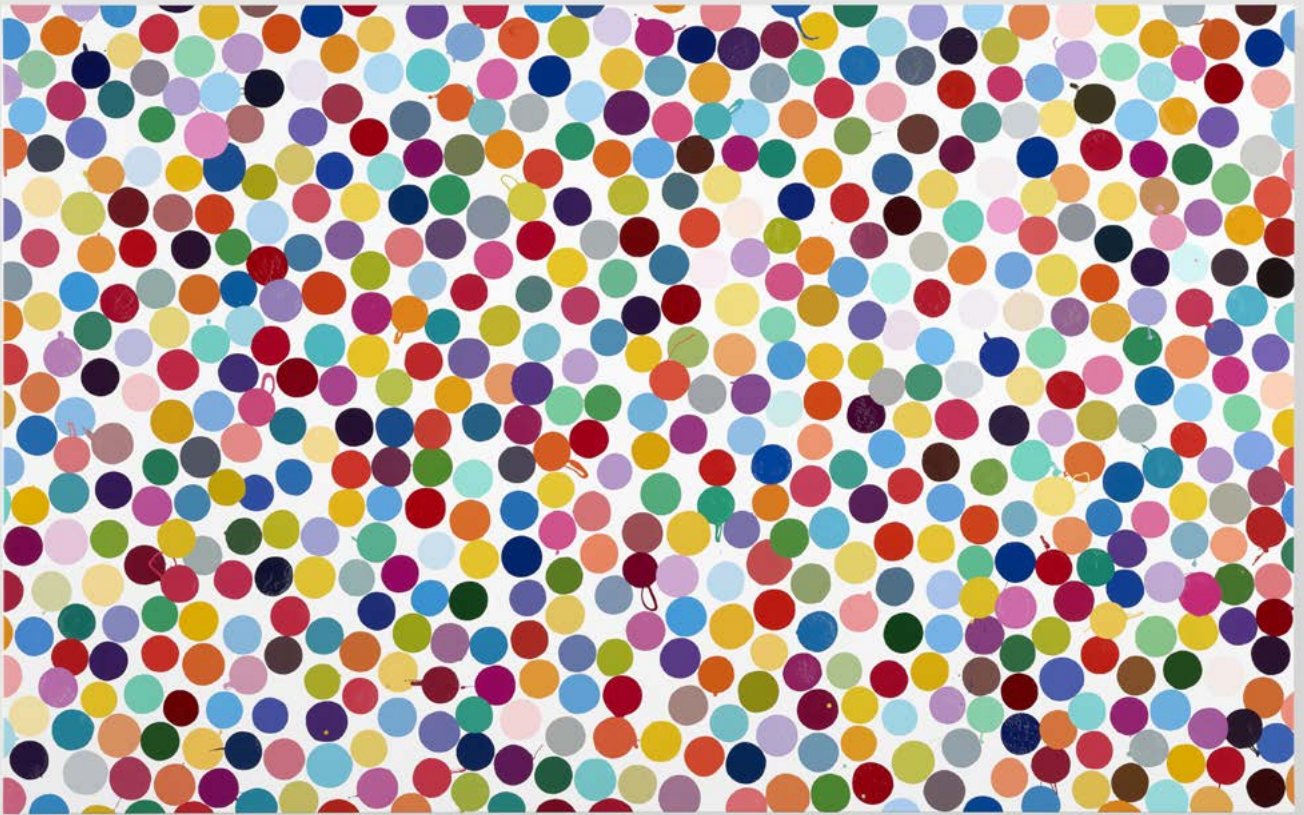


Opening 27 November 2024, White Cube Mason's Yard presents a solo exhibition of works by the late American artist Lynne Drexler, marking Drexler's first major presentation in Europe, and the gallery's inaugural showcase of the artist's work since announcing representation of The Lynne Drexler Archive in November 2023. Click [HERE](#) to view the exhibition.

DAMIEN HIRST

*Scotch Grey*  
2016  
Household gloss on canvas  
150 × 239 cm | 59 1/8 × 94 1/8 in.

USD 750,000 *plus applicable taxes*



ETEL ADNAN

*Untitled*

2020

Oil on canvas

41 × 33 cm | 16 1/8 × 13 in.

44.2 × 36.1 × 3.5 cm | 17 3/8 × 14 3/16 × 1 3/8 in. (framed)

USD 300,000 *plus applicable taxes*



Opening 21 January 2025, White Cube New York will present a solo exhibition of works by Etel Adnan, representing the last decade of her career.

THEASTER GATES

*DAVE Memory Vessel #2*

2024

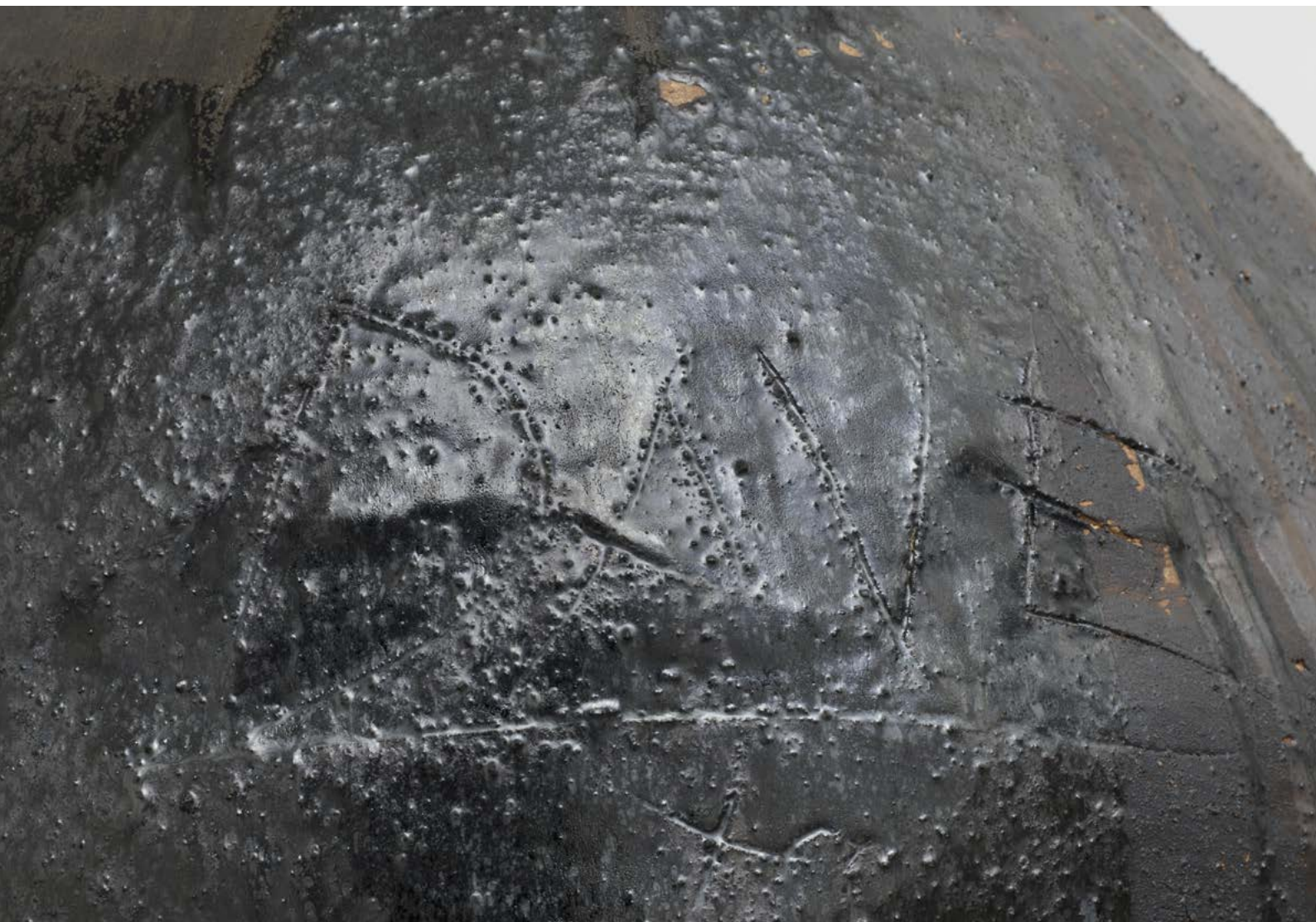
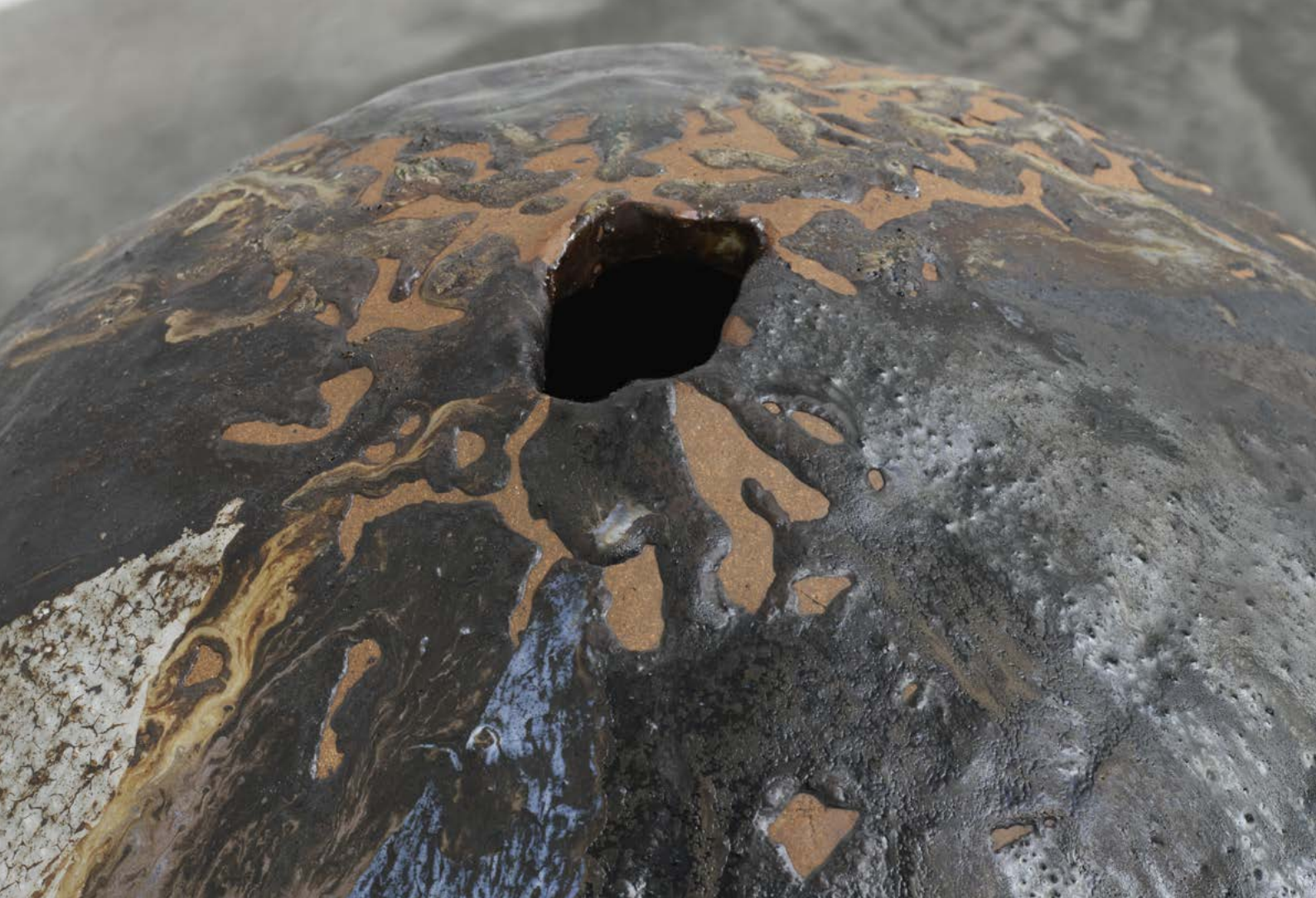
Wood-fired stoneware

66 × 63.5 × 63.5 cm | 26 × 25 × 25 in.

USD 225,000 *plus applicable taxes*

Click [HERE](#) to view a video of this work







# THEASTER GATES

*Untitled*  
2022

Industrial oil-based enamel, rubber torch down, bitumen and wood  
217 × 187 cm | 85 <sup>7</sup>/<sub>16</sub> × 73 <sup>5</sup>/<sub>8</sub> in.

USD 550,000 *plus applicable taxes*

Click [HERE](#) to view a video of this work





RICHARD HUNT

*Hanging Form, Number 1*

1960

Welded chromed steel

187.3 × 36.2 × 24.1 cm | 73 ¾ × 14 ¼ × 9 ½ in.

USD 750,000 *plus applicable taxes*

Click [HERE](#) to view a video of this work







GABRIEL OROZCO

*Guapo Fish*  
2024

Tempera and gold leaf on linen  
200 × 200 cm | 78 ¾ × 78 ¾ in.

USD 1,100,000 *plus applicable taxes*

Click [HERE](#) to view a video of this work



*Guapo Fish* is currently featured in Gabriel Orozco's solo exhibition at White Cube Seoul, open until 14 December 2024. Click [HERE](#) to view the exhibition.



DANH VO

*Untitled*  
2024

1st–2nd-century CE Roman marble torso of Dionysus, 200 CE  
Roman marble head of a female and pinewood  
131.5 × 42 × 68 cm | 51 ¾ × 16 ⅞ × 26 ¾ in.

EUR 400,000 *plus applicable taxes*









PARK SEO-BO

*Ecriture No.221107*

2022

Pencil and oil on Le Monde newspaper on canvas

55 x 40 cm | 21 5/8 x 15 3/4 in.

USD 140,000 *plus applicable taxes*



Open until 11 January 2025, White Cube New York is pleased to present 'The Newspaper Ecritures, 2022–23', an exhibition showcasing the final body of work by the late master of Dansaekhwa, Park Seo-Bo, which he completed shortly before his passing in 2023 at the age of 91. Click [HERE](#) to view the exhibition.



ANTONY GORMLEY

*OPEN STRESS II*

2023

8 mm Corten steel

171 × 57 × 44 cm | 67 <sup>5</sup>/<sub>16</sub> × 22 <sup>7</sup>/<sub>16</sub> × 17 <sup>5</sup>/<sub>16</sub> in.

GBP 500,000 *plus applicable taxes*



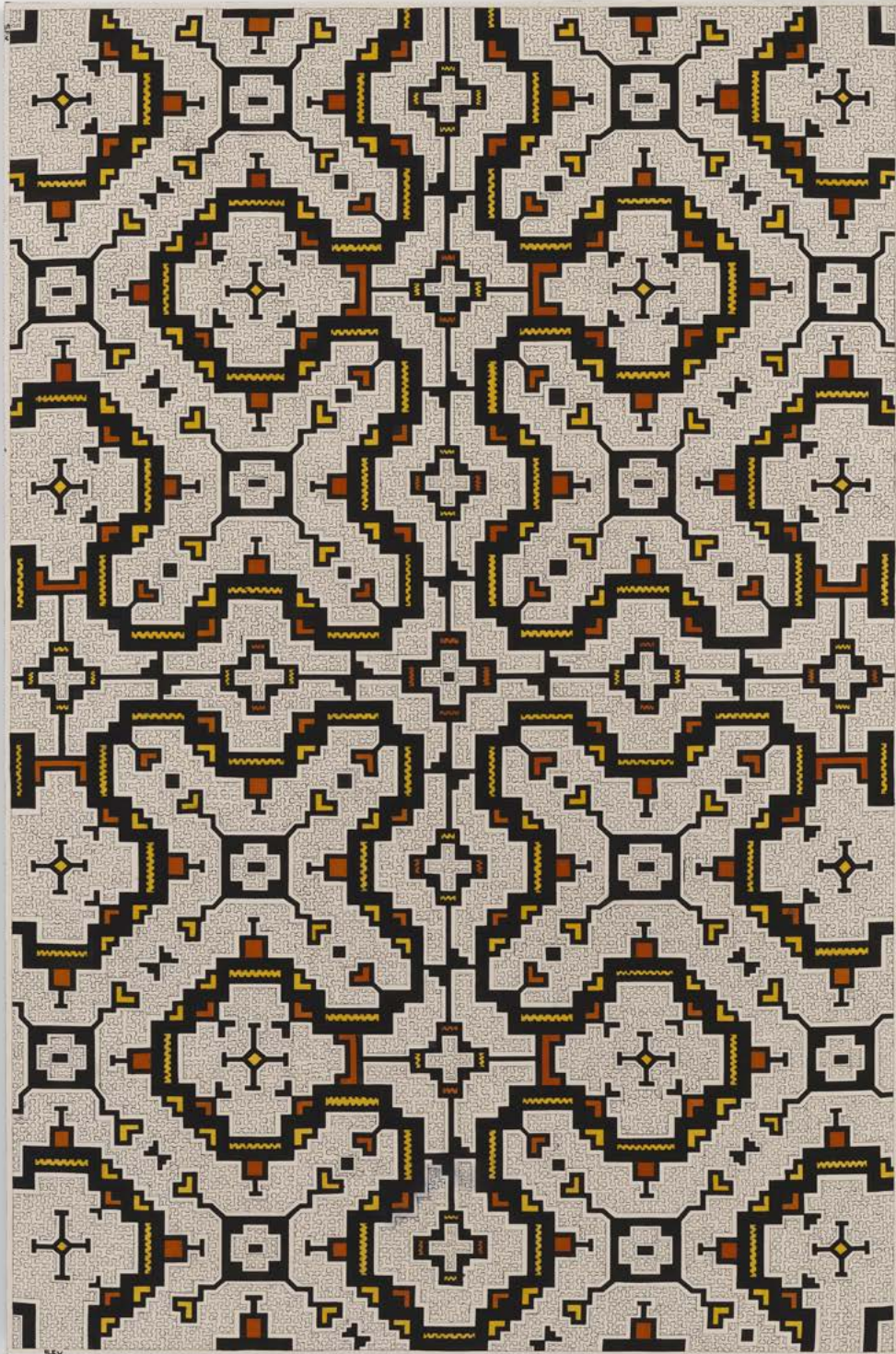


SARA FLORES

*Untitled (Tayan Kené 1, 2024)*  
2024

Vegetal dyes on wild-cotton canvas  
210.2 × 141 cm | 82 ¾ × 55 ½ in.

USD 70,000 *plus applicable taxes*



Sara Flores has collaborated with Dior on the 9th edition of the Dior Lady Art Project, which invites a select group of artists to reimagine the house's iconic Lady Dior bag in their unique visual styles. Drawing on elements from her Amazonian heritage, Flores incorporates *Kené* motifs – central to her canvas works – into her designs.





BEATRIZ MILHAZES

*Salcinha I*  
2001

Oil on canvas

169 × 70 cm | 66 <sup>5</sup>/<sub>16</sub> × 27 <sup>5</sup>/<sub>16</sub> in.

USD 850,000 *plus applicable taxes*





BARBARA KRUGER

*Untitled (Look for the moment when pride becomes contempt)*  
1993

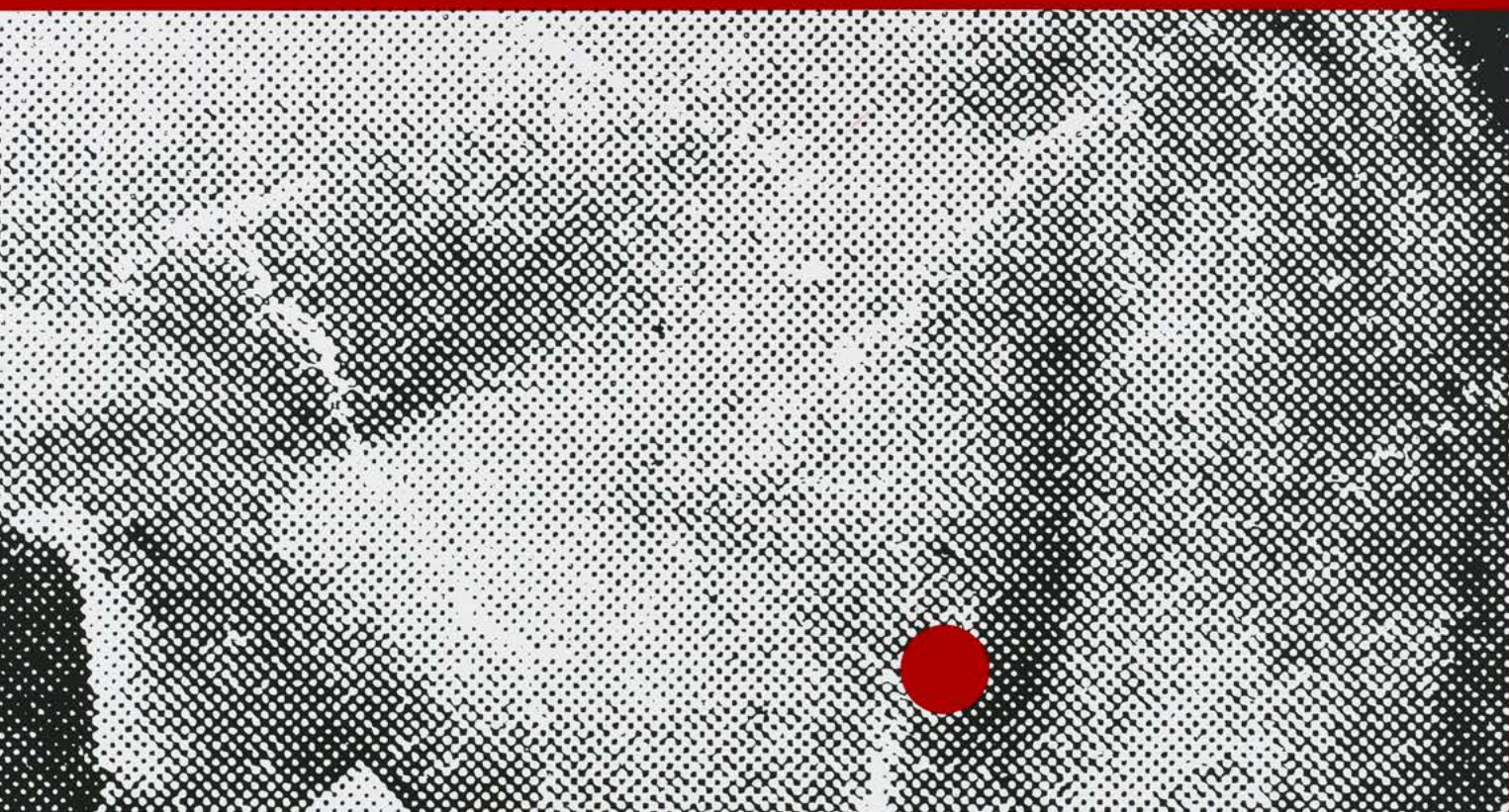
Photographic silkscreen ink on vinyl  
116.2 × 245.4 cm | 45 ¾ × 96 ⅝ in.

Price upon application





**es contempt**



CINGA SAMSON

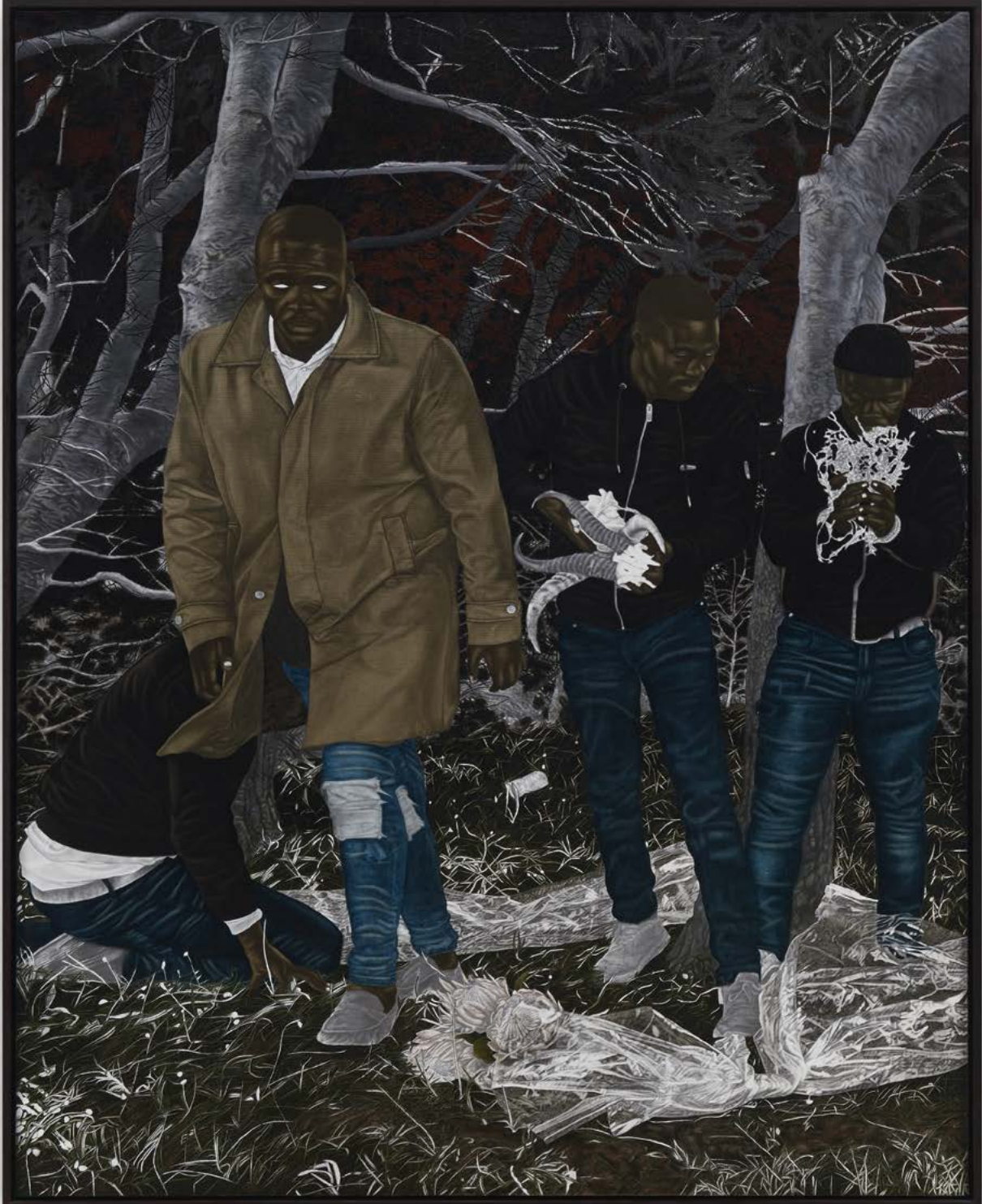
*Nincedo nikhawuleze*

2024

Oil on canvas

150 × 120 cm | 59 1/6 × 47 1/4 in.

USD 155,000 *plus applicable taxes*



TIONA NEKKIA MCCLODDEN

*NEVER LET ME GO | XIX. eye of the storm*  
2024

Black jute rope, leather, leather dye and Saphir shoe polish  
123.2 × 62.2 × 7 cm | 48 ½ × 24 ½ × 2 ¾ in.

USD 75,000 *plus applicable taxes*





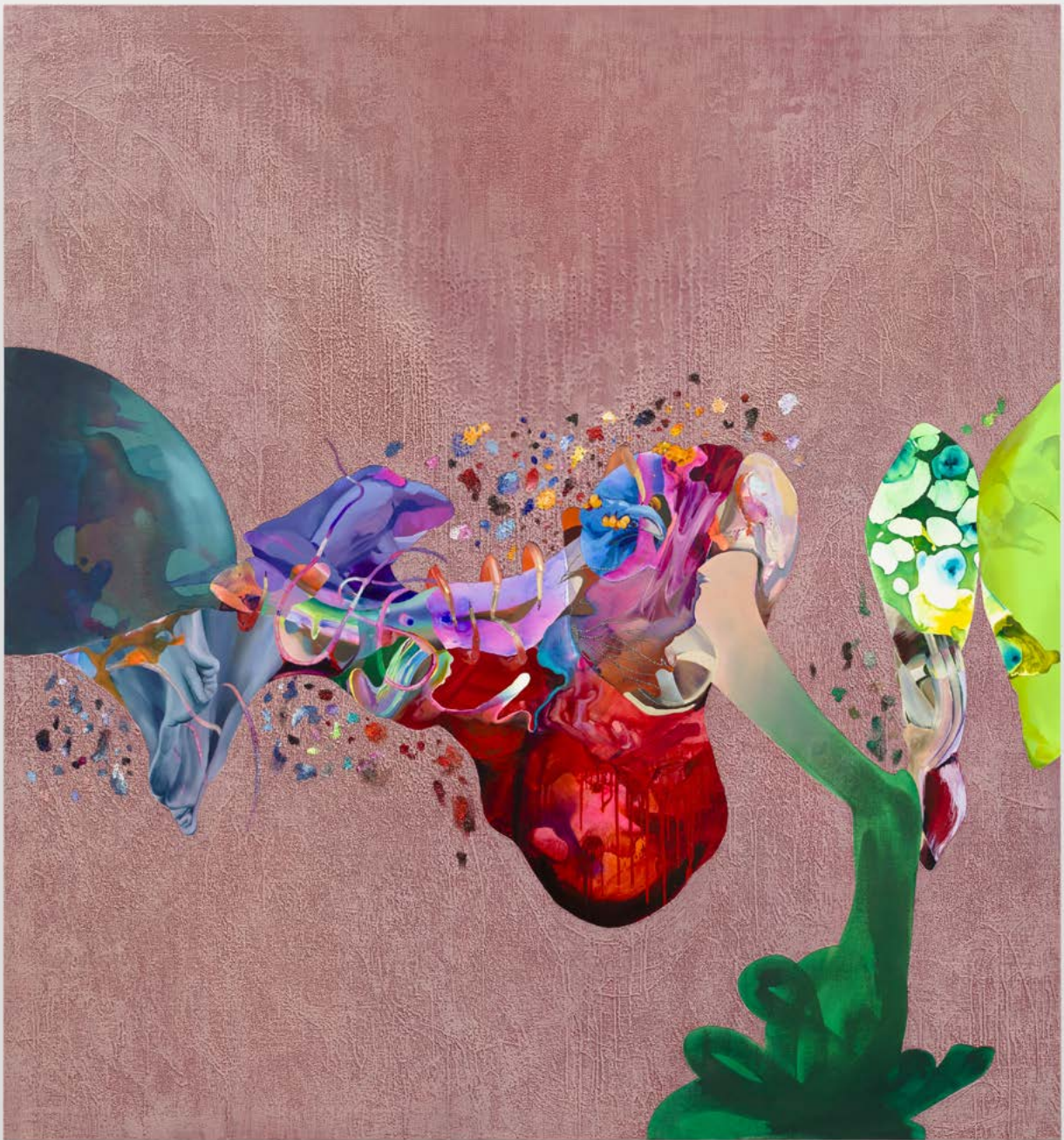
ILANA SAVDIE

*Revenge Fantasies*

2024

Oil, acrylic and beeswax on canvas stretched on panel  
218.4 × 203.2 cm | 86 × 80 in.

USD 175,000 *plus applicable taxes*







DAVID ALTMER

*Mercury*  
2024

Foam, epoxy clay, epoxy gel, acrylic paint, concrete, steel rods,  
resin, pencil, coloured pencil, glass rhinestones and human hair  
81.3 × 40.6 × 30.5 cm | 32 × 16 × 12 in.

USD 75,000 *plus applicable taxes*



DANICA LUNDY

*Nobody deserves you the way that I do*  
2024

Oil on canvas

152.4 × 152.4 cm | 60 × 60 in.

USD 85,000 *plus applicable taxes*



# CHRISTIAN MARCLAY

*Straws*

2016

Single-channel animation, silent

Edition of 6 and 2 APs

Continuous loop

Dimensions variable

USD 50,000 *plus applicable taxes*

Click [HERE](#) to view a clip of this work



White Cube will be presenting the silent video, *Straws* (2016) by Christian Marclay at Art Basel Miami Beach. Another work from this series, *Chewing Gum* (2016), will be projected onto the exterior of the New World Symphony building in SoundScape Park, Miami Beach, as part of Times Square Arts' 'Midnight Moment' programme. In addition, Marclay's work *The Clock* (2010) is on view at the Museum of Modern Art, New York until 17 February 2025.

IMI KNOEBEL

*Etcetera CX*

2024

Acrylic on aluminium

146.8 × 140.6 cm | 57 <sup>13</sup>/<sub>16</sub> × 55 <sup>3</sup>/<sub>8</sub> in.

EUR 160,000 *plus applicable taxes*



JULIE CURTISS

*Mary with the Medela*  
2024

Acrylic and oil on canvas  
137.2 × 91.4 cm | 54 × 36 in.

USD 100,000 *plus applicable taxes*



SARAH MORRIS

*HSBC [Hong Kong]*

2024

Household gloss paint on canvas

207 × 152.5 cm | 81 ½ × 60 ⅙ in.

USD 155,000 *plus applicable taxes*



AL HELD

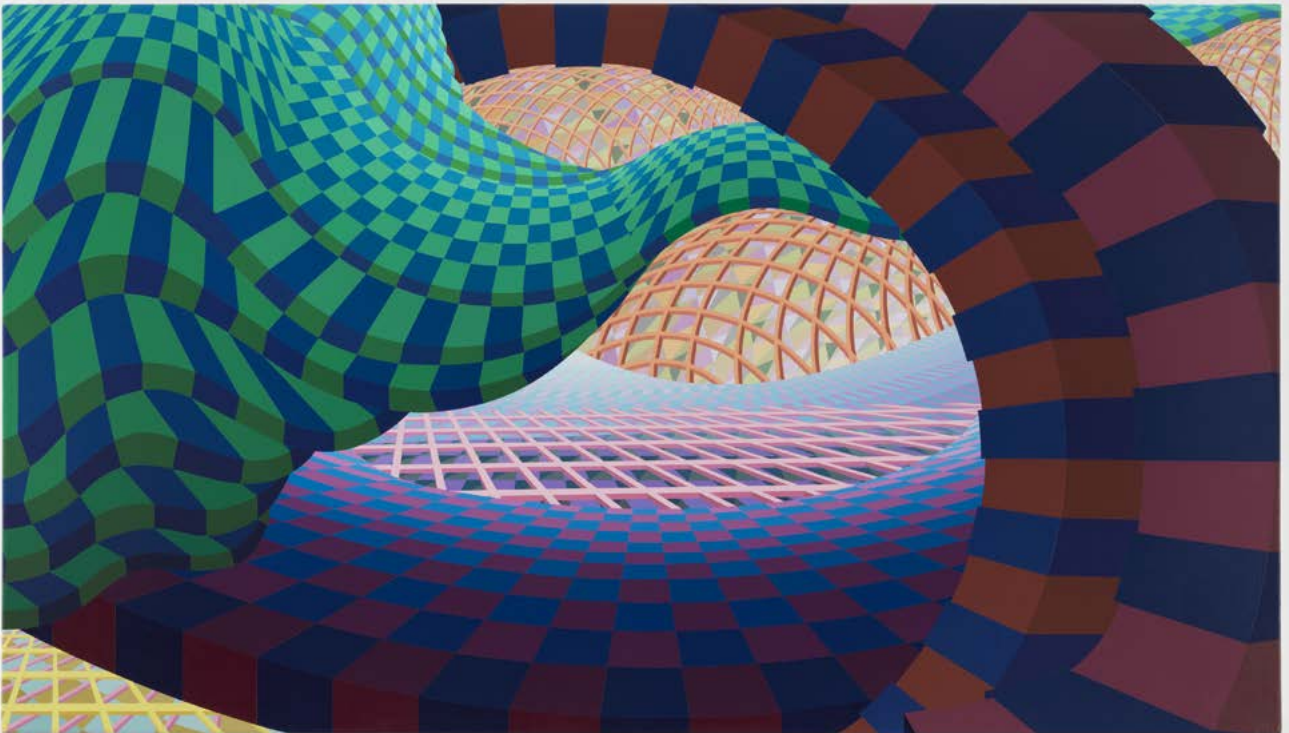
*Blue Wave*

1998

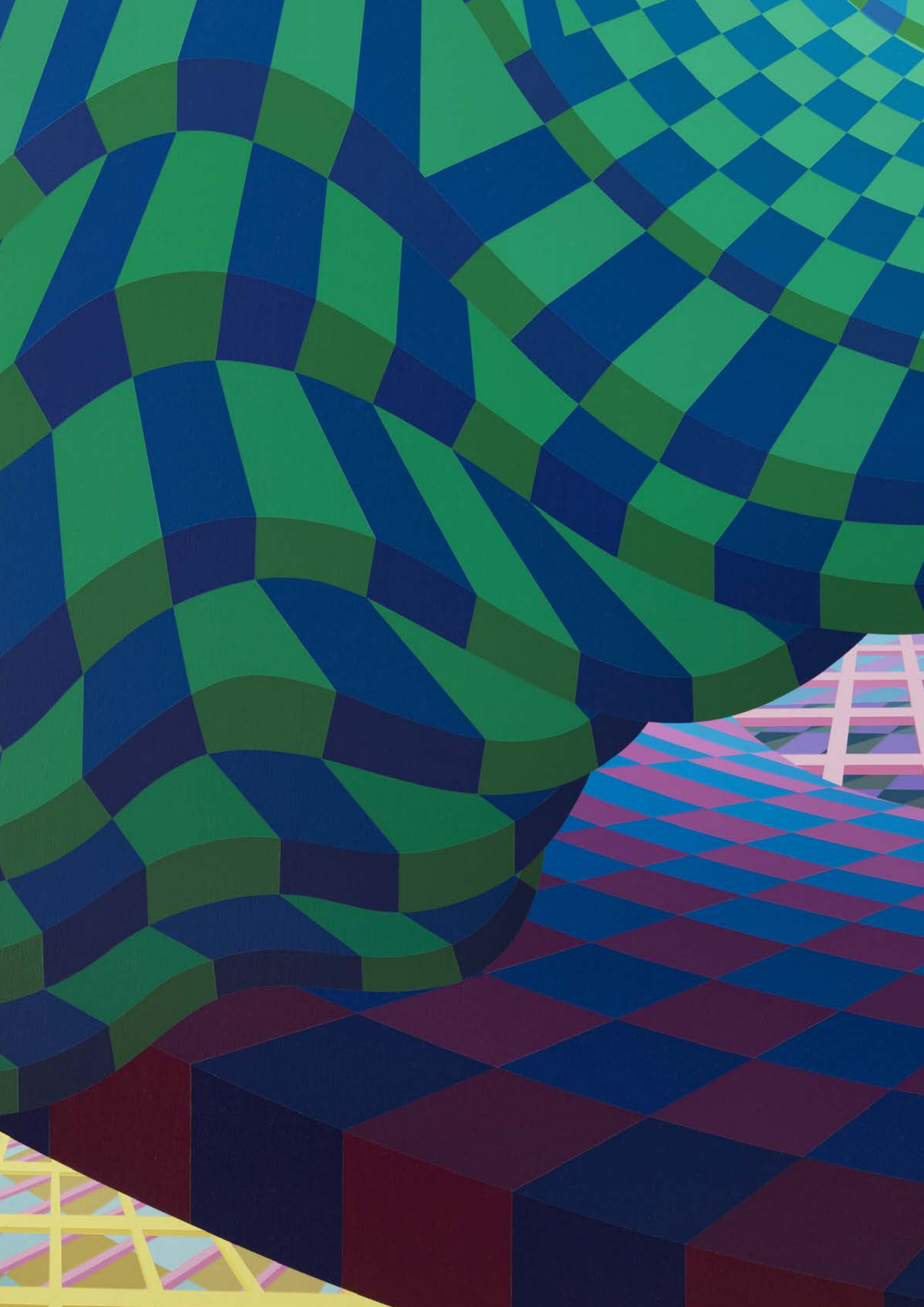
Acrylic on canvas

121.9 × 213.4 cm | 48 × 84 in.

USD 200,000 *plus applicable taxes*







ISAMU NOGUCHI

*Duo*

1982–83 (2020)

Hot-dipped galvanised steel

Edition of 5, Foundation Copy

(From an edition of 18, plus 1 AP, 5 Foundation Copies and 3  
Publisher Copies)

222.3 × 67.3 × 61 cm | 87 ½ × 26 ½ × 24 in.

USD 200,000 *plus applicable taxes*



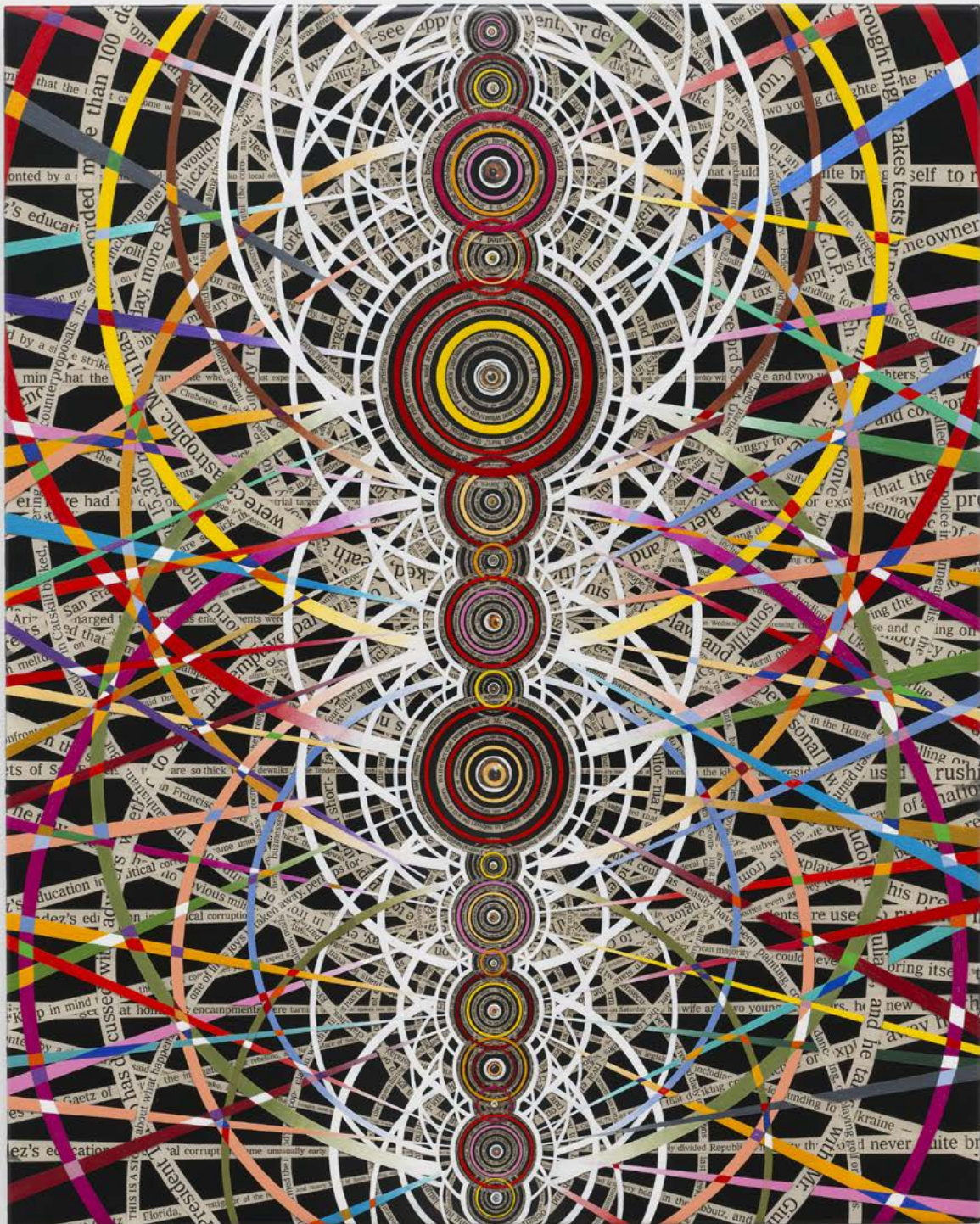


FRED TOMASELLI

*Field Energy Migration Warm Up*  
2024

Photo collage, acrylic and resin on wood panel  
76 × 60 cm | 29 1/16 × 23 5/8 in.

USD 235,000 *plus applicable taxes*



## GALLERY EXHIBITIONS



Jeff Wall  
*Life in Pictures*

22 November 2024 – 12 January 2025  
Bermondsey, London



Lynne Drexler  
*The Sixties*

27 November 2024 – 10 January 2025  
Mason's Yard, London



Takis  
*The Void*

21 November 2024 – 11 January 2025  
Paris



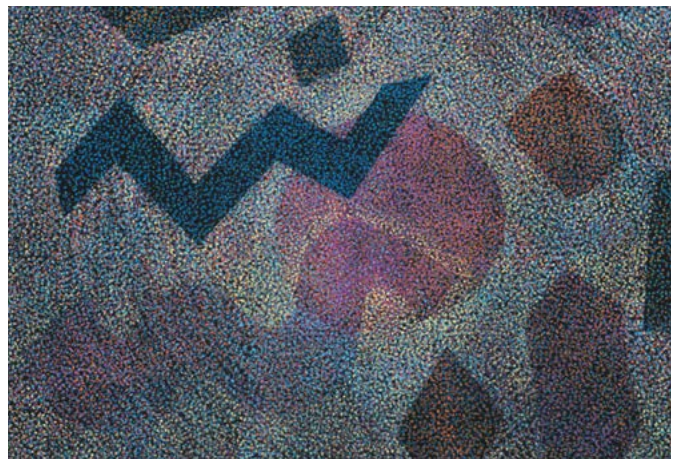
Park Seo-Bo  
*The Newspaper Ecritures, 2022-23*

8 November 2024 – 11 January 2025  
New York



Gabriel Orozco

4 September – 14 December 2024  
Seoul



Howardena Pindell  
*Deep Sea, Deep Space*

20 November 2024 – 8 January 2025  
Hong Kong

## GALLERY INFORMATION

### BERMONDSEY, LONDON

144 – 152 Bermondsey Street  
London SE1 3TQ  
+44 (0) 207 930 5373

Opening Times:  
Tuesday – Saturday, 10am – 6pm  
Sunday, 12 – 6pm

### MASON'S YARD, LONDON

25 – 26 Mason's Yard  
London SW1Y 6BU  
+44 (0) 207 766 3550

Opening Times:  
Tuesday – Saturday, 10am – 6pm

### PARIS

10 avenue Matignon  
75008 Paris  
+33 (0) 1 87 39 85 97  
*By appointment*

Opening Times:  
Tuesday – Saturday,  
10am – 12.30pm, 1.30 – 6pm

### NEW YORK

1002 Madison Avenue  
New York, NY 10075  
+1 212 750 4232

Opening Times:  
Tuesday – Saturday, 10am – 6pm

### HONG KONG

50 Connaught Road Central  
Hong Kong  
+ 852 2592 2000

Opening Times:  
Tuesday – Saturday, 11am – 7pm

### SEOUL

6, Dosan-daero 45-gil  
Seoul  
+82 (0) 2 6438 9093

Opening Times:  
Tuesday – Saturday, 10am – 6pm