

ALMINE RECH

Frieze Los Angeles

Booth E11

February 20 - 23, 2025

Santa Monica Airport
3027 Airport Avenue
Santa Monica, CA 90405

Tomokazu Matuyama

Frieze Los Angeles

February 20 - 23, 2025 | Los Angeles, California, USA



Portrait of Tomokazu Matsuyama

Tomokazu Matsuyama (b. 1976, Japan) creates work that responds to his own bi-cultural experience of growing up between Japan and America by bringing together aspects of both Eastern and Western aesthetic systems. His practice repositions traditional icons within a broader global context in order to create a distinctive style that resists cultural categorization and embodies what the artist refers to as the “struggle of reckoning the familiar local with the familiar global.” By raising questions of national and individual identity through the formal qualities and subject matter of his paintings, Matsuyama examines the “natural chaos” of our social environments and challenges viewers to confront their own conceptions of cultural homogeneity.

Matsuyama is influenced by a variety of subjects, including Japanese art from the Edo and Meiji eras, classical Greek and Roman statuary, French Renaissance painting, post-war contemporary art, and the visual language of global, popular culture as embodied by mass-produced commodities.

Matsuyama currently lives and works in Brooklyn, New York. He received his MFA in Communications Design from the Pratt Institute, New York. Matsuyama’s important exhibitions include the Long Museums in both Shanghai and Chongqing, China; Hong Kong Contemporary Art (HOCA) Foundation, Hong Kong; Japan Society, New York, NY, USA; Harvard University, Cambridge, MA, USA; Katzen Arts Center at American University Museum, Washington, DC, USA; and Museum of Contemporary Art Museum, Sydney, Australia, among other galleries and institutions.

Matsuyama’s works are in the permanent collections of LACMA, Los Angeles, CA, USA; Asian Art Museum, San Francisco, CA, USA; The Royal Family, Prince of Dubai, UAE; Bank of Sharjah Collection, Dubai, UAE; Microsoft Collection, and more.

Recent exhibitions include:

Contemporary Istanbul Foundation, Venice, Italy (solo), 2024; Fondation Louis Vuitton, Paris, France (group), 2024; Powerlong Museum, Shanghai, China (solo), 2023; Hirosaki Museum of Contemporary Art, Hirosaki, Japan (solo), 2023; Pérez Art Museum Miami, FL, USA (group), 2023

ALMINE RECH



Tomokazu Matsuyama
Come Away With Me, 2024
Acrylic and mixed media on canvas
279 x 427 cm
110 x 168 in

Sold

ALMINE RECH



Tomokazu Matsuyama

Islands Above Endless Frontier, 2020

Acrylic and mixed media on canvas

277 x 216 cm

109 x 85 in

Sold



Detail

ALMINE RECH



Installation View

ALMINE RECH



Tomokazu Matsuyama
Victory Song Unsee, 2024
Acrylic and mixed media on canvas
277 x 189 cm
109 x 74 in

Subject to availability

ALMINE RECH



Detail

ALMINE RECH



Installation View

ALMINE RECH



Tomokazu Matsuyama

Corner Souvenir Twilight, 2024

Acrylic and mixed media on canvas - in two parts

286 x 198 cm

112 1/2 x 78 in

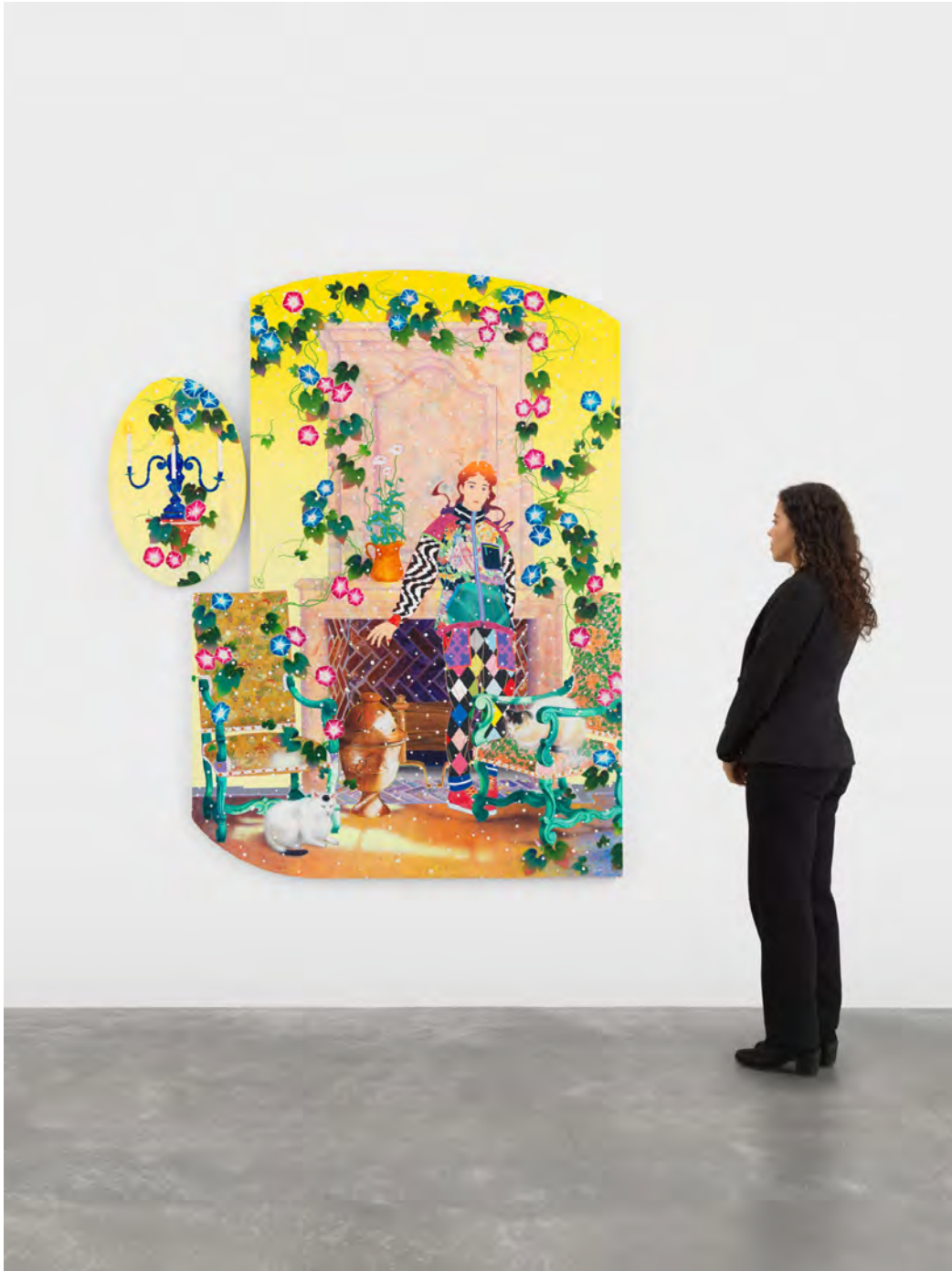
Subject to availability

ALMINE RECH



Detail

ALMINE RECH



Installation View

ALMINE RECH



Tomokazu Matsuyama
Drift Confidence Rippling, 2024
Acrylic and mixed media on canvas
203 x 183 cm
80 x 72 in

Subject to availability

ALMINE RECH



Detail



Installation View

ALMINE RECH



Tomokazu Matsuyama
Porcelain Glowing Equilibre, 2024
Acrylic and mixed media on canvas
203 x 170 cm
80 x 67 in

Subject to availability

ALMINE RECH



Tomokazu Matsuyama
Stillness Farscapes, 2024
Acrylic and mixed media on canvas
152 cm (diameter)
60 in (diameter)

Reserved



Detail

ALMINE RECH



Installation View

ALMINE RECH



Tomokazu Matsuyama
Resonance Release, 2024
Acrylic and mixed media on canvas
137 cm (diameter)
54 in (diameter)

Subject to availability



Detail

ALMINE RECH



Installation View

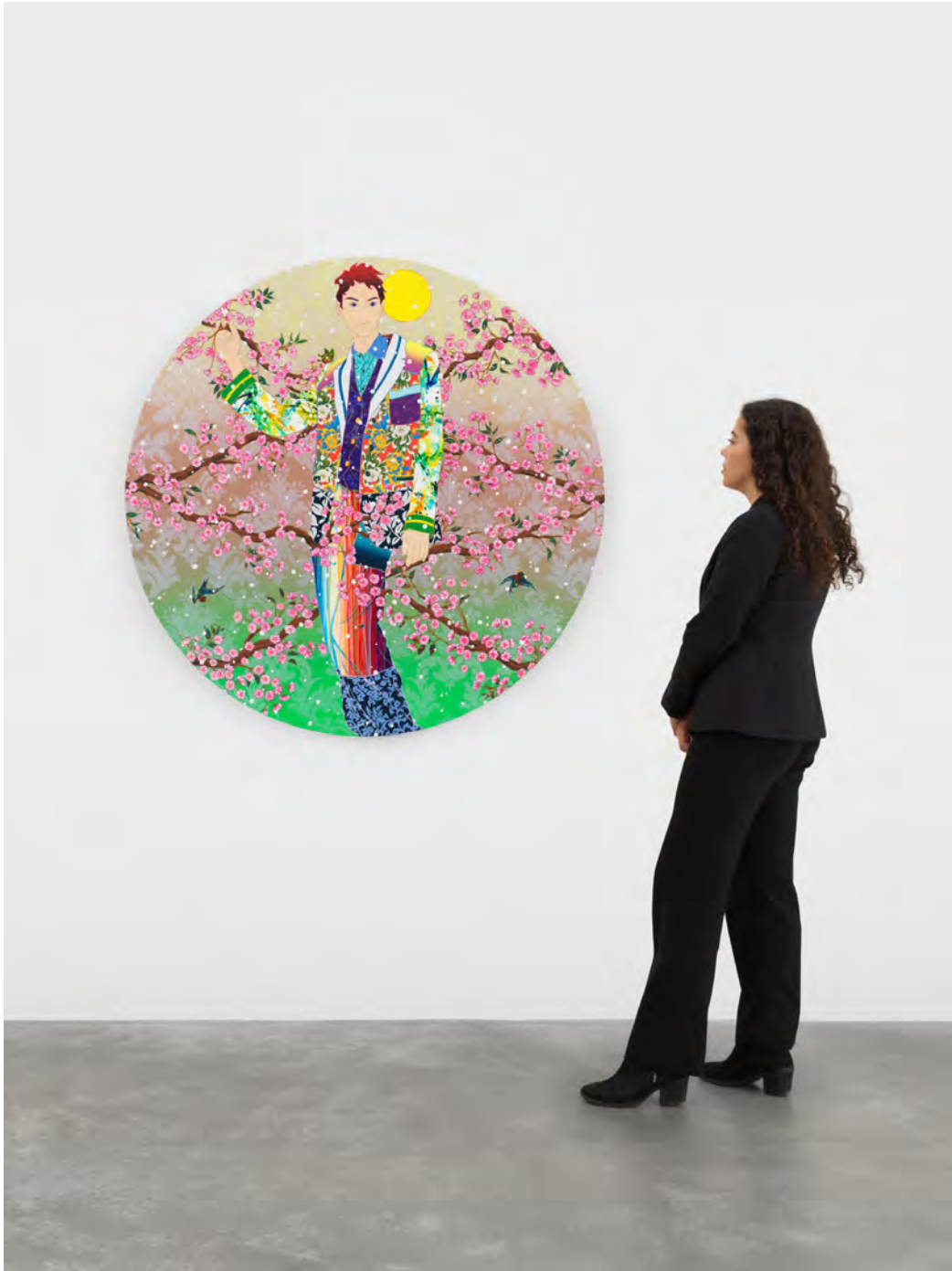


Tomokazu Matsuyama
Blending Hemisphere, 2024
Acrylic and mixed media on canvas
137 cm (diameter)
54 in (diameter)



Detail

ALMINE RECH



Installation View