


Schoelkopf Gallery at The Art Show
Booth A4

Schoelkopf

An abstract painting with a textured, layered appearance. The color palette is dominated by vibrant greens, blues, and yellows, with some darker, muted tones. The brushstrokes are visible and expressive, creating a sense of movement and depth. The overall composition is non-representational, focusing on color and form.

Schoelkopf Gallery is delighted to present fourteen paintings, sculptures, and works on paper by twentieth-century American modernists, both familiar and whose renown never matched their talent, on view at The Art Show Organized by ADAA, from October 29 to November 2, 2024. Drawn from The Estate of Mary Abbott and distinguished private collections including The Kathleen Kennedy and Frank Marshall Collection, the gallery's presentation spans three critical decades from the 1920s to the 1950s and features a diverse group of artists who developed important contributions to modernism that traverse genres, mediums, and modes of expression.

In the years leading up to World War II, Helen Wessells portrayed the symbolic role of women in local community and national patriotism, while Ida O'Keeffe and Georgia Engelhard investigated physical structures of institutional power. Other modernists, such as Georgia O'Keeffe, Virginia Berresford, and Hedda Sterne, documented their studios and the natural world in jewel-like still lifes and landscapes informed by astute observation and personal creative lexicons. Similarly, Isabel Bishop experimented with layers of perception, choosing details to represent and omit in her portrait of a young woman, and Enid Bell's distilled forms reveal the essence of two figures in an embrace, no more, and no less. In the post-war period, Mary Abbott and Alice Trumbull Mason experimented with the language of abstraction, both expressionist and geometric, creating compositions that oscillate with color and form.

Schoelkopf



Mary Abbott (1921-2019)

Untitled

Signed at lower right: M. Abbott

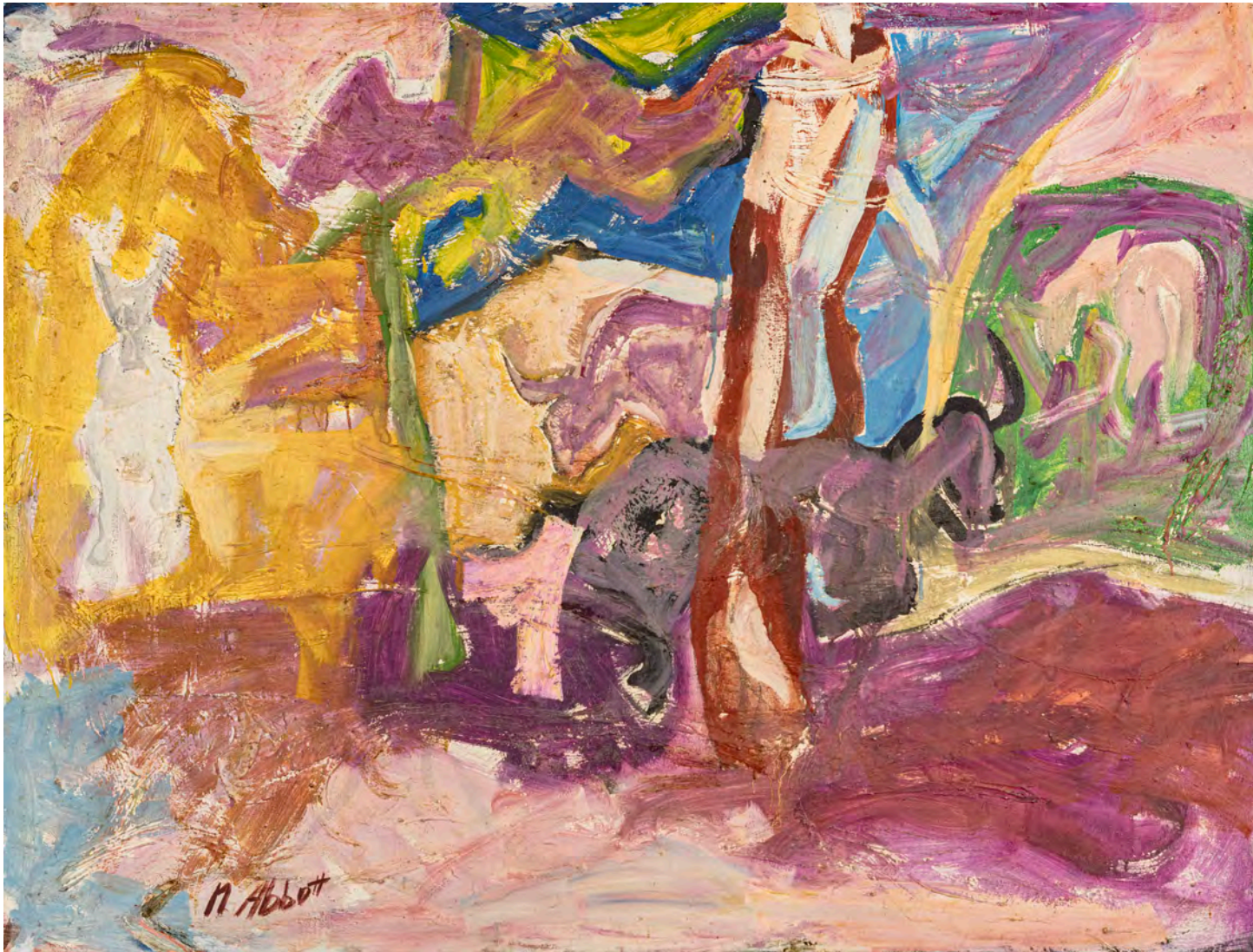
Oil on canvas

28½ x 31¾ inches

72.4 x 79.7 cm

\$ 70,000

Schoelkopf



Mary Abbott (1921-2019)

Jungle Blood

Signed at lower left: M Abbott; inscribed with the title on verso: Jungle / blood

Oil on canvas

38¼ x 50¼ inches

97.2 x 127.6 cm

\$ 175,000

Schoelkopf



Mary Abbott (1921-2019)

Untitled, c. 1950–59

Signed at lower right: Mary Abbott

Oil on paper

22 x 28 inches

55.9 x 71.1 cm

\$ 28,000

Schoelkopf



Enid Bell (1904-1994)
Nightclub (Last Dance), c. 1945
Inscribed: ENID BELL
Redwood on painted wood base
15 x 8 x 5 inches
38.1 x 20.3 x 12.7 cm

\$ 8,500

Schoelkopf



Virginia Berresford (1902-1995)

Martha's Vineyard

Signed at lower right: Virginia Berresford

Oil on canvas

11 x 21 inches

25.4 x 50.8 cm

\$ 25,000

Schoelkopf



Virginia Berresford (1902-1995)

Dunes II, 1939

Signed and dated at lower right: Virginia Berresford / 39

Oil on canvas

18 x 33 inches

45.7 x 83.8 cm

\$ 60,000

Schoelkopf



Virginia Berresford (1902-1995)

Shells, c. 1940

Signed at lower right: Virginia Berresford

Oil on canvas

16 x 12 inches

40.6 x 30.5 cm

\$ 32,000

Schoelkopf



Isabel Bishop (1902-1988)
Blowing Smoke Rings, 1938
Signed at lower right: Isabel Bishop
Oil on panel
20 $\frac{1}{8}$ x 14 $\frac{1}{8}$ inches
51.1 x 35.9 cm

On Reserve

Schoelkopf



Georgia Engelhard (1906-1986)

The White Church, c. 1930-39

Signed on stretcher: Georgia Engelhard

Oil on canvas

18¼ x 32¼ inches

46.4 x 81.9 cm

\$ 350,000

Schoelkopf



Georgia O'Keeffe (1887-1986)

Alligator Pears, 1923

Inscribed and dated on verso: Alligator Pears 1923

Oil on board

9 x 12 inches

22.9 x 30.5 cm

\$ 1,175,000

Schoelkopf



Ida O'Keeffe (1889-1961)

The County Seat, 1941

Signed at lower left: Eda Ten Eyck
O'Keeffe; titled on verso: *The County Seat*;
signed and dated on verso: Ida Ten Eyck
O'Keeffe / 1941

Oil on canvas

48½ x 48½ inches

123.2 x 123.2 cm

\$ 185,000

Schoelkopf



Hedda Sterne (1910-2011)

Studio Still Life, 1947

Signed and dated at lower right: 1947 / Hedda Sterne

Oil on canvas

28¼ x 22¼ inches

71.8 x 56.5 cm

\$ 125,000

Schoelkopf



Alice Trumbull Mason (1904-1971)

Squares Maintained, 1956

Oil on canvas

24 x 18 inches

61 x 45.7 cm

\$ 160,000

Schoelkopf



Helen Wessells (1905-1985)

The Negro Troop, 1935-36

Signed and dated at lower left: Helen Wessells '36; signed, dated and inscribed with the title on verso: The Negro Troop / Helen Wessells / 35

Tempera on panel

24 x 30 inches

61 x 76.2 cm

\$ 250,000

Schoelkopf



Schoelkopf Gallery at The Art Show

Booth A4
The Park Avenue Armory
October 29 - November 2, 2024

Andrew Schoelkopf

Principal

andrew@schoelkopfgallery.com
(914) 886-2700

Alana Ricca

Managing Director

alana@schoelkopfgallery.com
(203) 524-2694

Adele Whitmyer

Sales Associate

adele@schoelkopfgallery.com
(203) 252-1834

Schoelkopf