

**SUCHITRA MATTAI**

*present bodies, future souls*

ADAA The Art Show 2024 | Booth A2

**ROBERTS PROJECTS**



*a wind, a scent, a sound, 2024*  
braided worn saris, armature  
78 x 60 x 60 in (198.1 x 152.4 x 152.4 cm)  
Reg# 11940  
\$125,000



For ADAA The Art Show, Roberts Projects is pleased to present a selection of new works by artist Suchitra Mattai that reflect on the duality of the body as a site of isolation and connection, where interior emotions are mediated through external expression. By utilizing clothing as both a profound metaphor and its primary material, these intricate mixed-media works declare the body as a contact zone which equally conceals and reveals who we are and who we aspire to be.

This series emerges from the South Asian traditions that view the body as a signifier of the cosmos and interconnectedness of all life forms. Scholar and author Diana Eck expands on this notion, saying, “No image is as evocative as the body in suggesting the systemic whole—interrelated, with distinctive differences, and yet an organic unity.” As the artist combines found saris and objects from the domestic sphere with narrative fragments that reference the figure, Mattai invites viewers to contemplate the lives and stories that they represent. These materials are woven into a vision of the future that channels the rich imagination of folklore, where heroines and goddesses create portals to a world built on ideas of sustainability, empathy and hybridity.















*a cape of good faith, 2024*  
tassels, worn saris, boa feathers, ghungroo bells, fabric and vintage curtain box  
61 x 37 in (154.9 x 94 cm)  
Reg# 11942  
\$60,000







*of silt and tides, 2024*  
found vintage bust, braided worn saris  
18 x 18 in (45.7 x 45.7 cm)  
Reg# 11939  
\$14,000

*Like the clothes we wear, our bodies both conceal and reveal us. They express who we are and where we come from, but also who we want to be.*

Suchitra Mattai, 2024





*a gentle touch, 2024*  
embroidery floss, beads, bindis, found needlepoint, sari fragment and trim  
34.5 x 24.5 x 1 in (87.6 x 62.2 x 2.5 cm) unframed, 36.25 x 26.5 x 2.5 in (92.1 x  
67.3 x 6.4 cm) framed  
Reg# 11946  
\$35,000





*empath*, 2024  
embroidery floss, bindis, bells and found tapestry fragment  
16 x 16 in (40.6 x 40.6 cm) unframed  
17.75 x 17.75 x 2.25 in (45.1 x 45.1 x 5.7 cm) framed  
Reg# 11947  
\$12,000







*circular thinking II, 2024*  
braided saris, fabric, beaded trim and tassels  
78 x 50 x 6 in (198.1 x 127 x 15.2 cm)  
Reg# 11945  
\$65,000



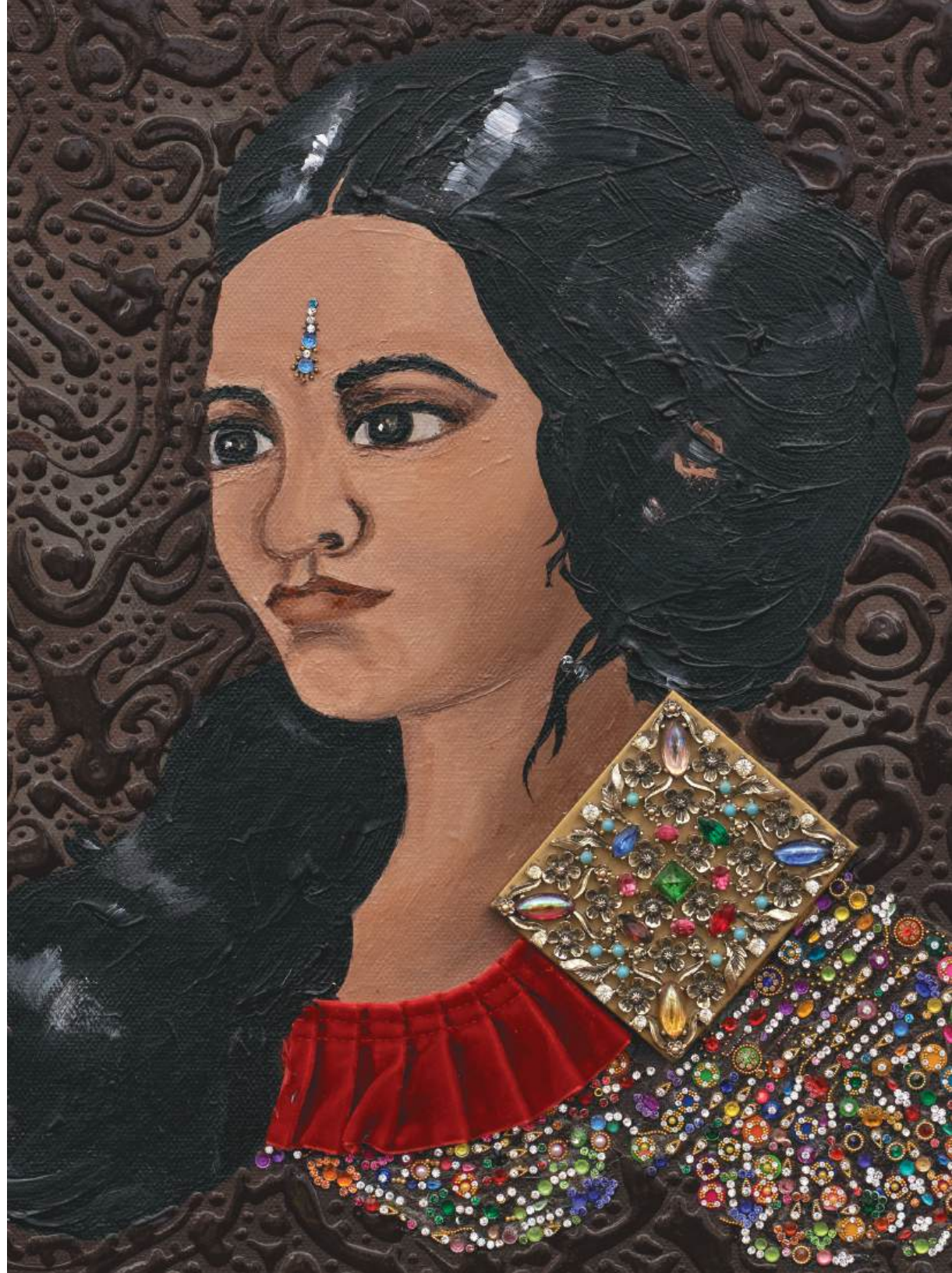




*benevolence, 2024*  
acrylic on canvas, bindis, found object, beaded trim  
and found belt buckle  
20 x 16 in (50.8 x 40.6 cm)  
Reg# 11943  
\$14,000

*Many of the found objects in these works reference the figure, either directly or indirectly, and offer story prompts that glow with possibility. Each material has an unknown history. Who lived with this furniture fragment? Who wore that garment? What does this design reveal about a particular era, people or class? And most importantly, how can I use it to tell new and lost stories?*

Suchitra Mattai, 2024





*her secret ballad, 2024*  
acrylic, beads, worn Indian clothing  
and found architectural fragment  
19.5 x 17.75 x 2.5 in (49.5 x 45.1 x 6.4 cm) framed  
Reg# 11944  
\$14,000

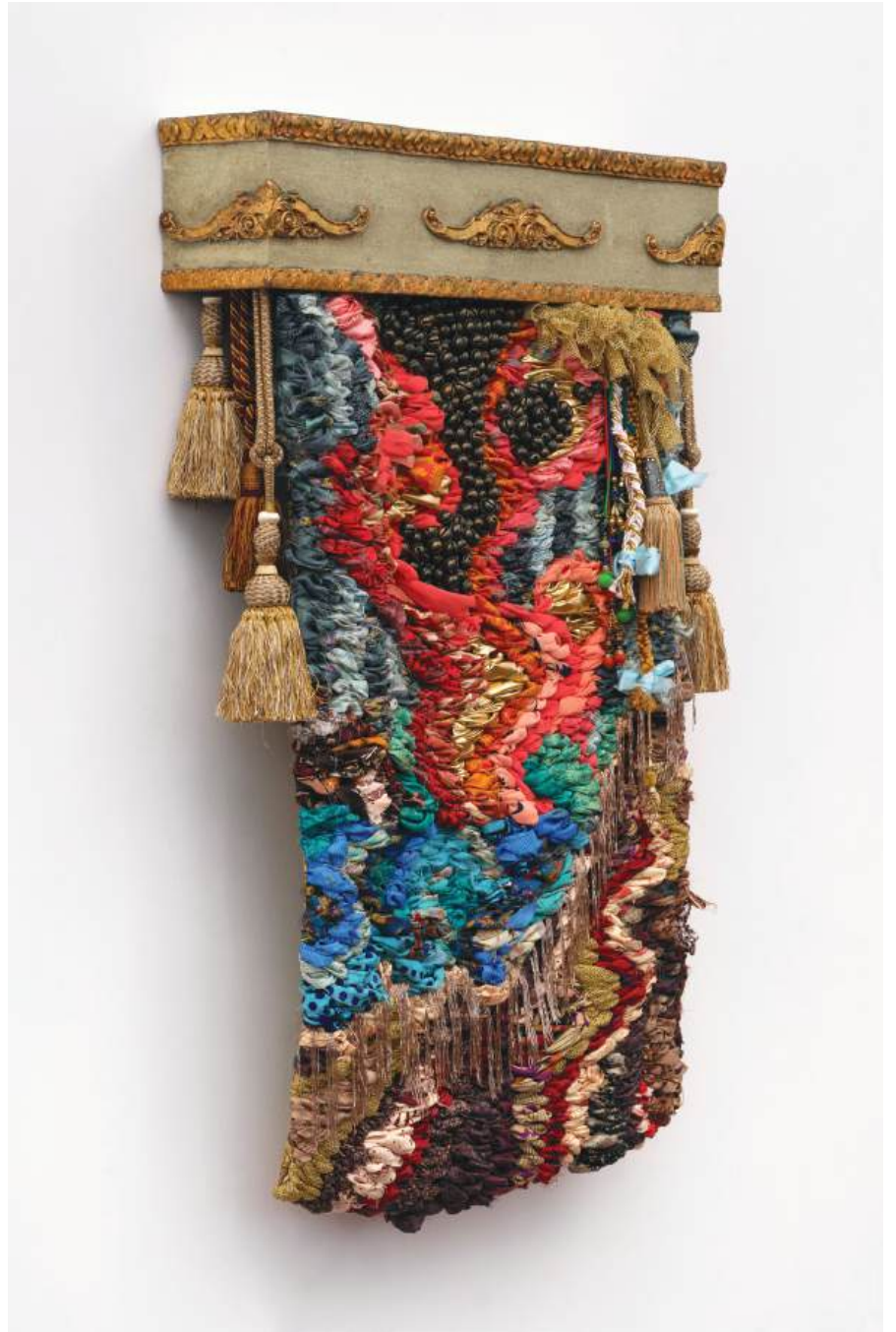






*magic mountain, 2024*  
worn saris, fabric, beaded trim and tassels  
52 x 37 in (132.1 x 94 cm)  
Reg# 11941  
\$55,000





## ABOUT THE ARTIST

Suchitra Mattai (b. 1973 Georgetown, Guyana; based, Los Angeles, CA) is a multi-disciplinary artist of Indo-Caribbean descent. Mattai received an MFA in painting and drawing and an MA in South Asian art from the University of Pennsylvania, Philadelphia. Past projects include group exhibitions at the MCA Chicago, Crystal Bridges Museum, the Sharjah Biennial, the Art Gallery of Ontario, the Tampa Museum of Art, the MCA Denver and the John Michael Kohler Arts Center, and solo exhibitions at the ICA San Francisco and Socrates Sculpture Park in NYC. Recent projects include a solo exhibition at the National Museum of Women in the Arts. Upcoming group exhibitions include ICA San Jose and the Aldrich Contemporary Art Museum in Ridgefield, CT. Her works are represented in collections which include Crystal Bridges Museum of Art, the Denver Art Museum, the Tampa Museum of Art, Crocker Art Museum, The Museum of Contemporary Art San Diego, the Tia Collection and the University of Michigan Museum of Art.

For additional information regarding ADAA The Art Show, please visit [theartshow.org](http://theartshow.org)

For inquiries regarding Suchitra Mattai, please contact Mary Skarbek, Senior Director at 1.323.549.0223 or [mary@robertsprojectsla.com](mailto:mary@robertsprojectsla.com)

For press inquiries, please contact the team at [ALMA](http://ALMA)



Suchitra Mattai in her studio, 2024. Image by Anna Maria Zunino Noellert. Courtesy of Socrates Sculpture Park