

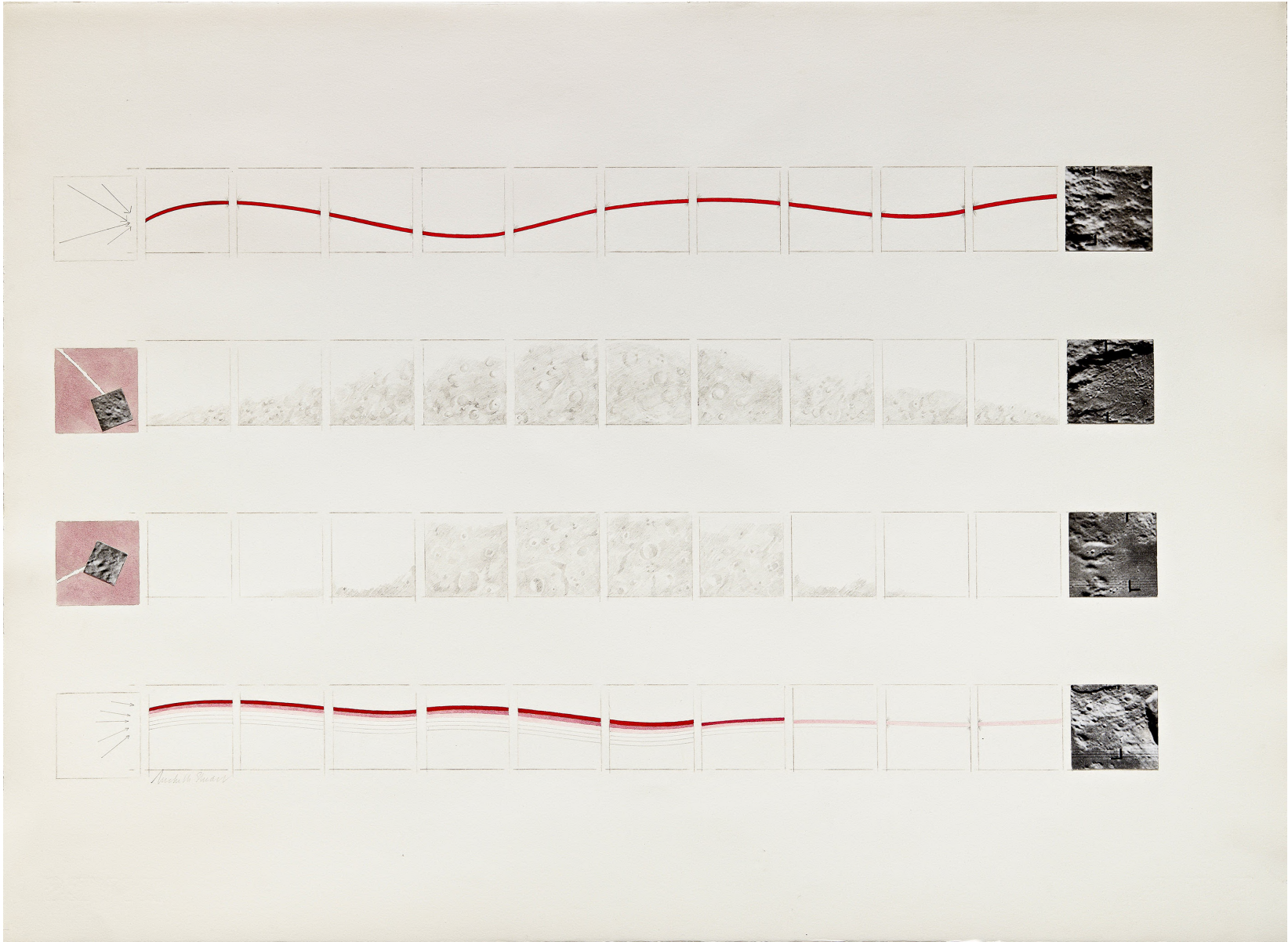
MARC SELWYN FINE ART

GALERIE LELONG & Co.



Michelle Stuart

The Art Show 2024



Wave Flow, 1969
Pencil, watercolor, photographs of the moon
22 x 29 inches
(MSFA17214)
\$50,000



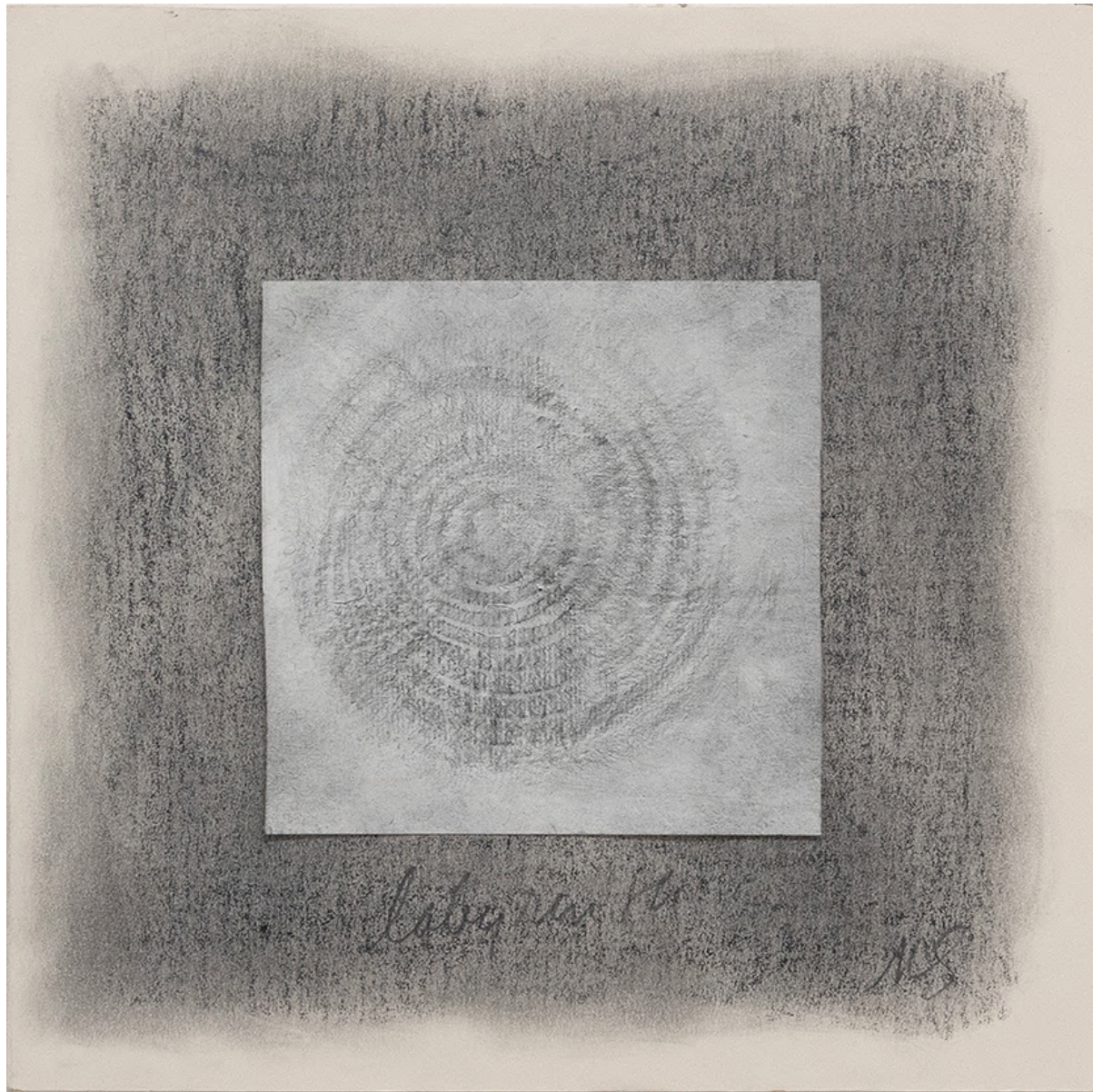
Zena (A), 1972
Graphite on paper
18 x 18 inches
(MSFA17149)
\$52,500



#14 *Blue Stone*, 1973
Graphite on paper
84 x 62 inches
(MSFA17244)
\$175,000



Sayreville Twilight, 1976
Earth from site on muslin mounted archival paper
35 x 35 inches
(MSFA18687)
\$90,000



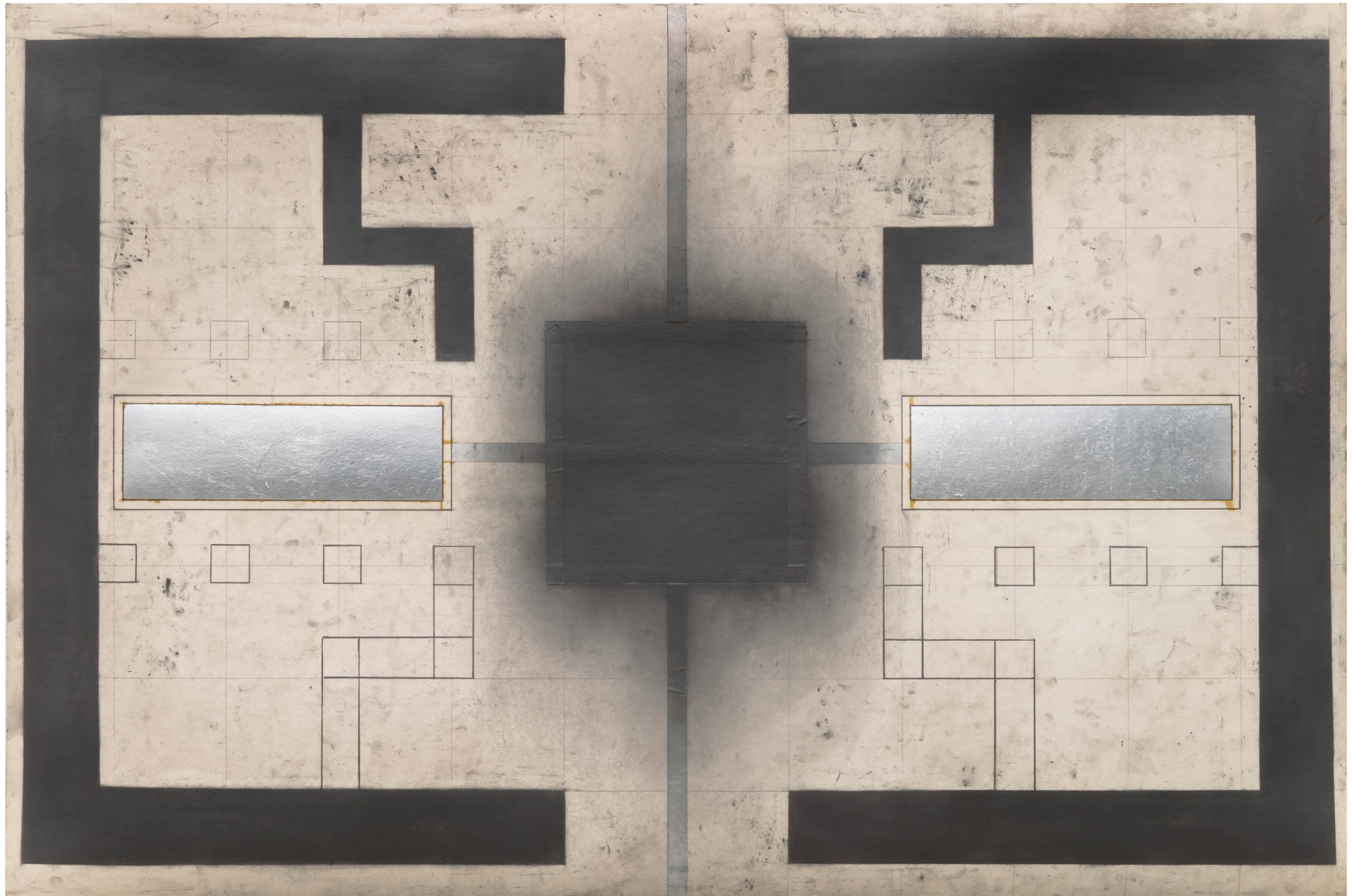
Labyrinth, 1978
Graphite on paper
8 1/2 x 8 1/2 inches
(MSFA16453)
\$35,000



Strata Series: Copan - Stela C, 1979
Earth on muslin mounted rag paper
11 x 11 5/8 inches
(MSFA18416)
\$50,000



Strata Series: Stonehenge, 1979
Earth from site on muslin mounted rag paper
Two parts: 36 x 24 inches, each
(MSFA18686)
\$165,000



Agdal II, 1982
Graphite, silver leaf, and paper collage on muslin mounted rag paper
24 x 36 inches
(MSFA18142)
\$50,000



Project for a Chart of the Earth Reflecting the Sky, 1983
Earth from Zagora, Morocco, plaster, handmade paper
17 1/2 x 21 1/2 x 2 inches
(MSFA16578)
\$80,000



Project for a Chart of the Earth Reflecting the Sky, 1983



Book of the Stone, 1984-85

Earth from Machu Picchu, Peru, hydrocal, wax, linen, muslin mounted paper

9 x 9 x 2 1/2 inches

(MSFA15001)

\$80,000



Brookings XCII (92), 1989
Encaustic, linen, plant material, collaged paper, pigments, wood panel
12 x 12 inches
(MSFA17138)
\$40,000



Sabil, 1989

Plants, pigments, graphite, aluminum powder, beeswax on double mounted muslin laminated rag paper mounted on canvas

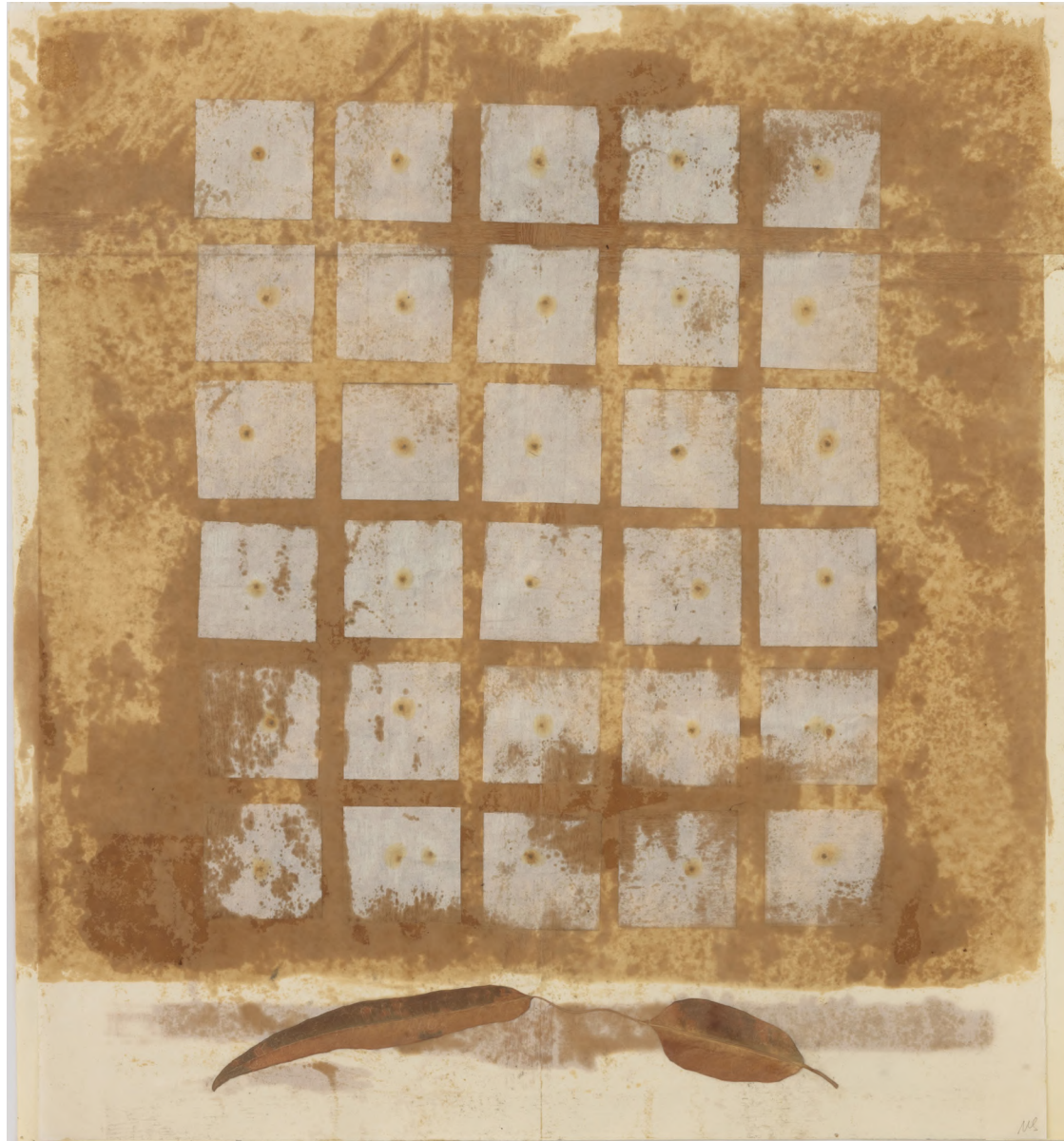
44 x 44 inches

(MSFA16439)

\$160,000



Sabi I, 1989



Seed Calendar: Cabo, 1992
Seeds, leaf, wax, china rice paper
19 1/4 x 18 inches
(MSFA17146)
\$35,000



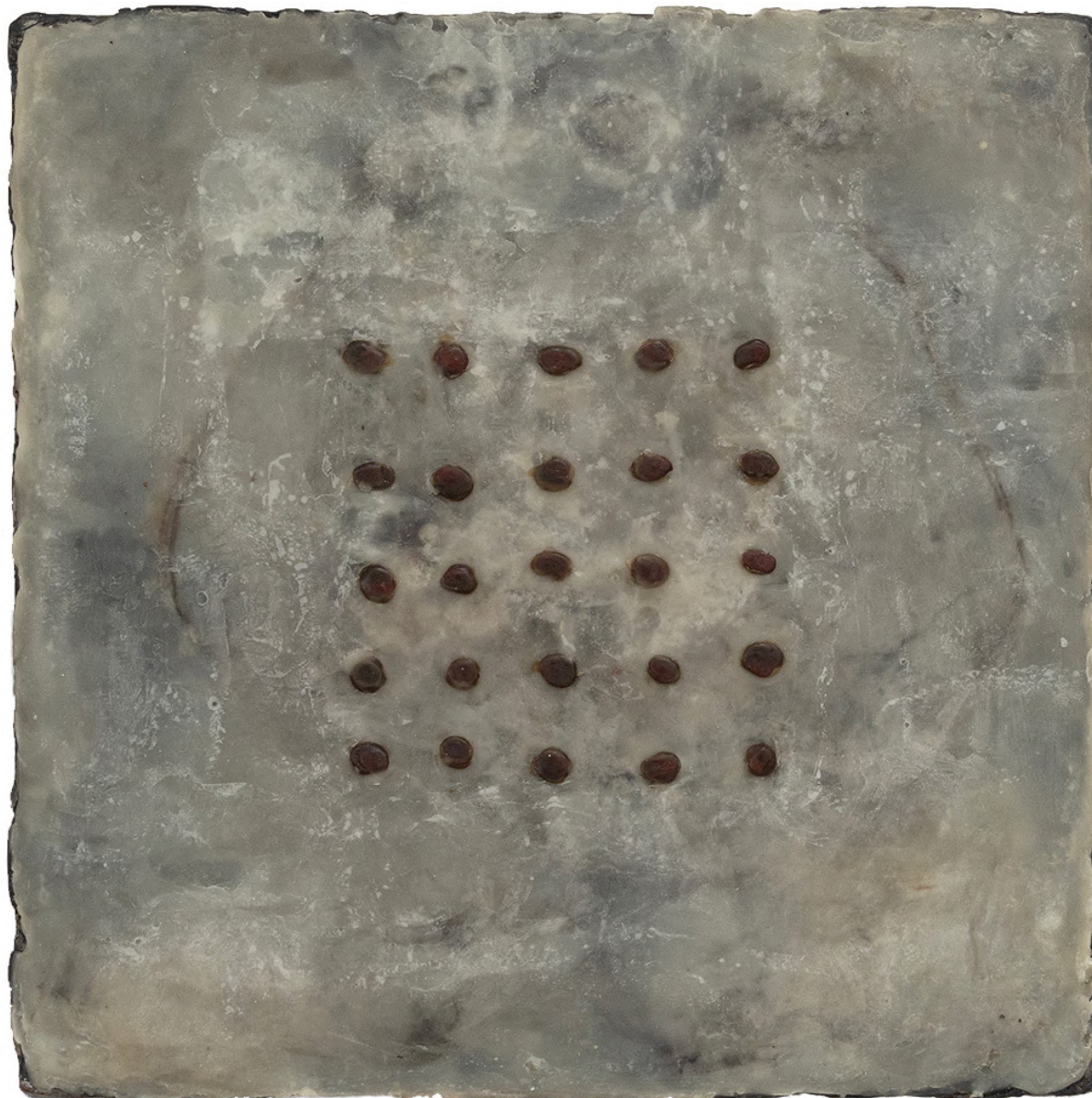
Earth (Sayreville), 1997
Bronze, earth, cotton
44 x 16 5/8 x 13 3/4 inches
(MSFA15675)
\$120,000



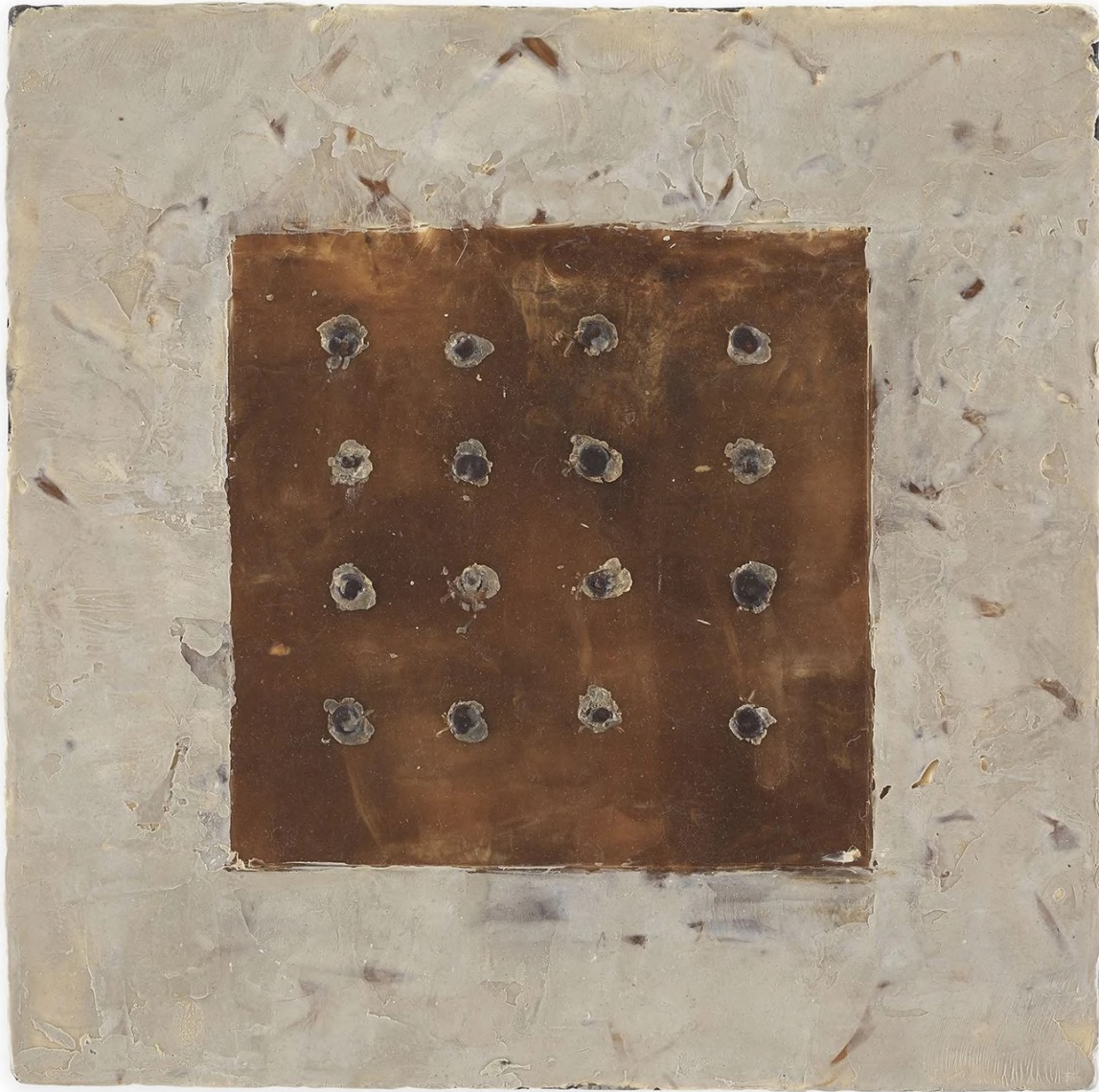
Earth (Sayreville), 1997



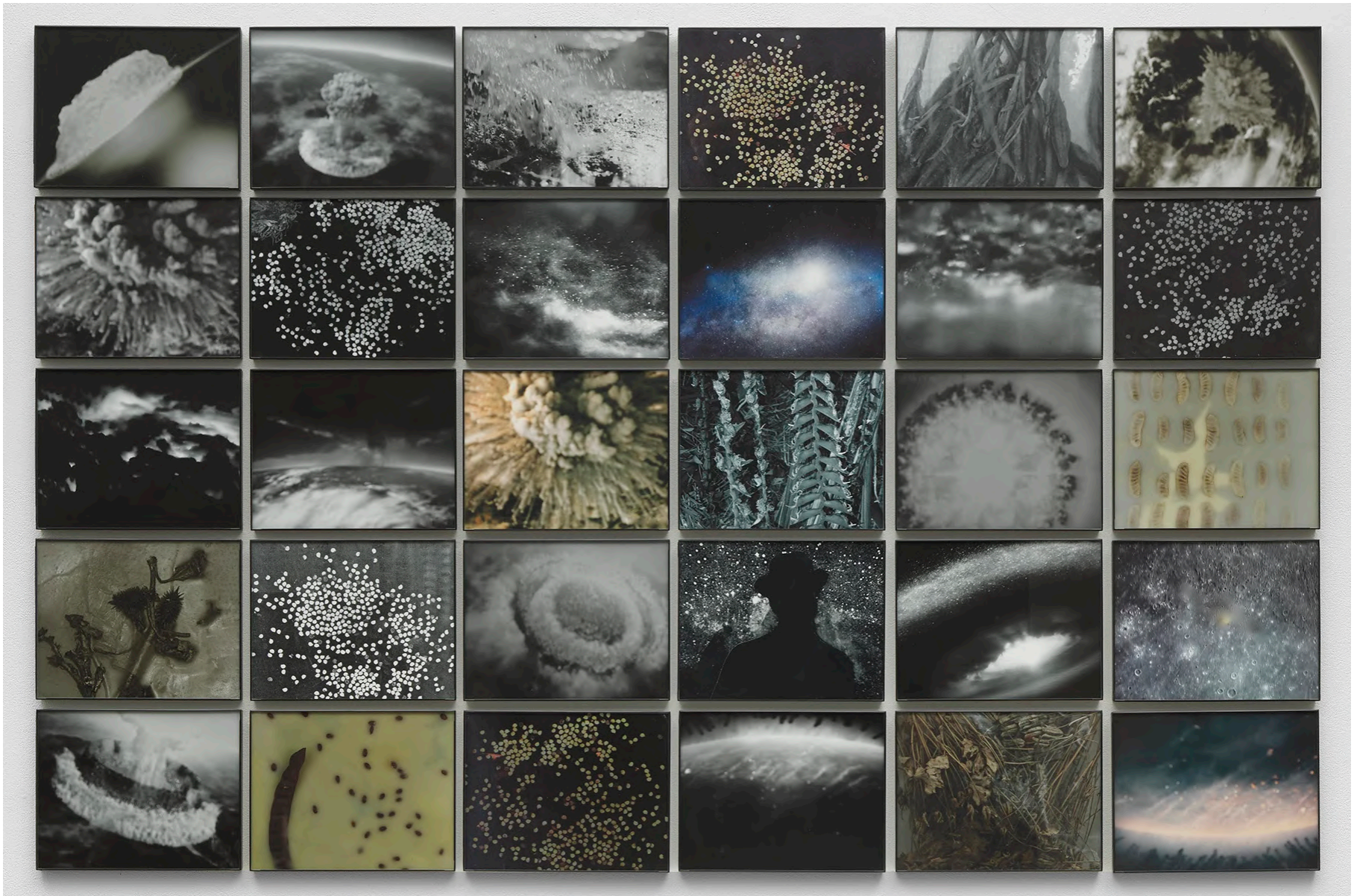
Earth (Sayreville), 1997



Seed Place, 1997
Seeds, beeswax, pigment, wood support
12 x 12 inches
(MSFA16208)
\$40,000



Tapa, 1998
Seeds, beeswax, pigments, wood support
12 x 12 inches
(MSFA14858)
\$40,000



Creation Myth, 2020
30 archival inkjet prints
Each: 8 x 10 inches, Overall: 45 x 69 inches
(MSFA18805)
\$90,000