



**THE
ARMORY
SHOW**

**SEPTEMBER 6–8
JAVITS CENTER**

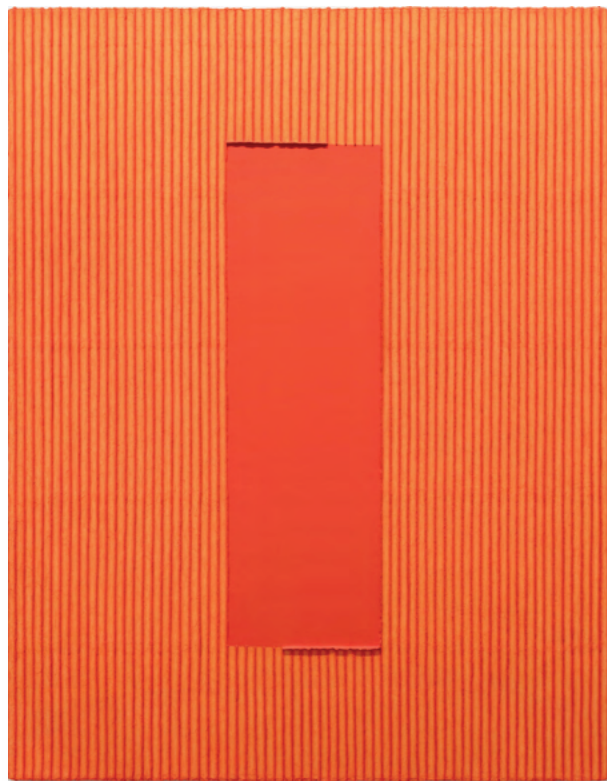
Booth 301

Johyun Gallery

Park Seo-Bo

b. 1931 - 2023

Park Seo-Bo was a seminal figure in Korean contemporary art. He is one of the founding members of the Dansaekhwa movement, which emerged in the early 1970s post-war Korea and has since gained international recognition. In the late 1960s, Park began the 'Ecriture' series by repeating pencil lines over wet monochromatic painted surfaces. Later, he expanded the language through the introduction of hanji (traditional Korean paper) and color. The work is brought into being through the process of repetitive actions of pasting, scraping, scratching, and rubbing. It delicately balances drawing and painting in a quest for emptiness through reduction. Park's work has been exhibited internationally, including: Museum of Fine Art, Boston; the Venice Biennale; Samsung Museum of Art, Seoul; Singapore Art Museum; Kunsthalle Wien, Vienna; Tate Liverpool, UK; Brooklyn Museum, New York; and Expo 67, Montreal. Park's work is included in the collections of the Solomon R. Guggenheim Museum, New York; M+, Hong Kong; Guggenheim Abu Dhabi, UAE; The National Museum of Contemporary Art, Seoul; and the K20, Kunstsammlung Nordrhein-Westfalen, Düsseldorf.



Park Seo-Bo

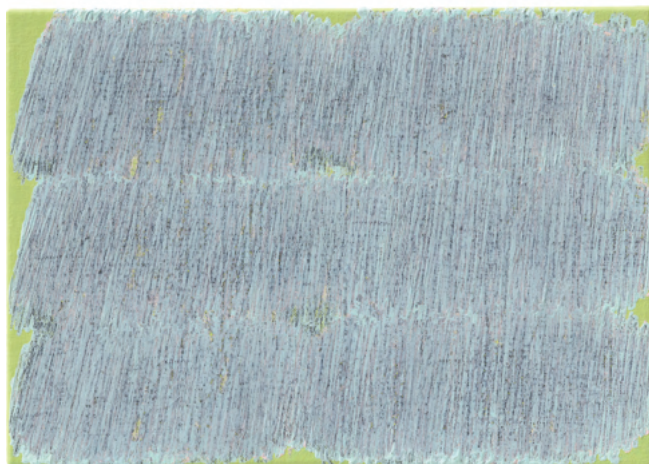
Ecriture No.080217, 2008

Acrylic with Korean Hanji paper on Canvas

57 x 44 in (145 x 112 cm)

USD \$410,000





Park Seo-Bo

Ecriture No. 201106, 2020

Pencil + Acrylic, Oil on Canvas

8.6 x 12.2 in (22 x 31cm)

USD \$280,000

Jin Meyerson

b. 1972

Jin Meyerson, is recognized for his contributions to the revival of figurative painting in the early 2000's in NYC where he began his career. A pioneer of early randomization CG systems in concert with painting, his work bridges figuration and abstraction by engaging with issues of displacement, loss of heritage, post-colonialism, and the expansive Korean diaspora. His recent work employ LIDR scans, AR overlays and ideas of retro causality, as source and origin on his longstanding investigation of meaning and contemporaneity in painting. His paintings have been featured in extensive solo and group exhibitions globally, including: The 2022 Venice Biennale; Gallery2 + Johyun Gallery, Seoul + Busan; Mwoods Museum, Beijing; Zach Feuer Gallery, NYC; Galerie Emmanuel Perrotin, Paris and Hong Kong; The Saatchi Gallery London; Galerie Nordine Zidoun, Luxembourg; Arario Gallery, Seoul and Cheonan, Hakgojae Gallery Seoul and Shanghai, and Pearl Lam Gallery HK. His work can be found in numerous public and private collections, including: the Solomon R. Guggenheim Museum, New York; The Saatchi Collection, London; Vanhaerents Art Collection, Brussels; Dean Valentine Collection, Los Angeles; the de la Cruz Collection, Miami; the Speyer Family Collection, New York; the Yuz Foundation, Jakarta and Shanghai.



Jin Meyerson

The Unknown Privacies that Hold Us Together, 2022

Oil on Canvas

85 x 71 in (216 x 180 cm)

USD \$90,000



Jin Meyerson

FIGURE DESCENDING AN ALGORITHM (SYZYGY 2022-24), 2024

Oil on Canvas

64 x 51 in (162 x 130 cm)

USD \$60,000



Jin Meyerson
PREFIGURE (SYZGY 2022-24), 2024
Oil on Canvas
21 x 25.7 in (53 x 65.2 cm)
USD \$15,000



Jin Meyerson

SYZGY 2022-24, 2022-24

Oil on Canvas

85 x 71 in (216 x 180 cm), 64 x 51 in (162 x 130 cm), 21 x 25.7 in (53 x 65.2 cm)

Lee Bae

b. 1956

Lee Bae focuses on the expressive potential of charcoal as a medium. Over the course of nearly three decades, Lee has dedicated himself to creating a diverse range of iterations of Korean painting through his use of charcoal and abstract forms that are self-sufficient and rich in spiritual and energetic qualities. By exploring immanent notions such as yielding, respiring, and circulation, which are embodied by charcoal as a material, Lee's work resonates with themes of life and death, absence and presence, light and shadow, form, and emptiness. Lee's oeuvre spans a wide range of mediums and forms, from drawings to canvas-based works, as well as installations, with each new work serving to expand upon his unique vision and approach. Lee's works have been featured at museums and institutions worldwide including: Phi Foundation, Montreal, Canada; Indang Museum, Daegu; Wilmotte Foundation, Venice; Fondation Maeght, Saint-Paul de Vence; Musée des Beaux-Arts, Vannes; and Musée Guimet, Paris. Among many others, Lee's work is in the permanent collections of museums including the National Museum of Contemporary Art, Gwacheon; Seoul Museum of Art, Seoul; Leeum-Samsung Museum of Art, Seoul; Fondation Maeght, Saint-Paul de Vence; Musée Guimet, Paris; Baruj Foundation, Barcelona, and Privada Allegro Foundation, Madrid.



Lee Bae

Issu du feu 6i, 2003

Charcoal on Canvas

86.6 x 59.8 in (220 x 152 cm)

USD \$215,000





Lee Bae

Brushstroke-67, 2024

Charcoal Ink on Paper

86.6 x 59.8 in (220 x 152 cm)

USD \$90,000



Lee Bae

Brushstroke-68, 2024

Charcoal Ink on Paper

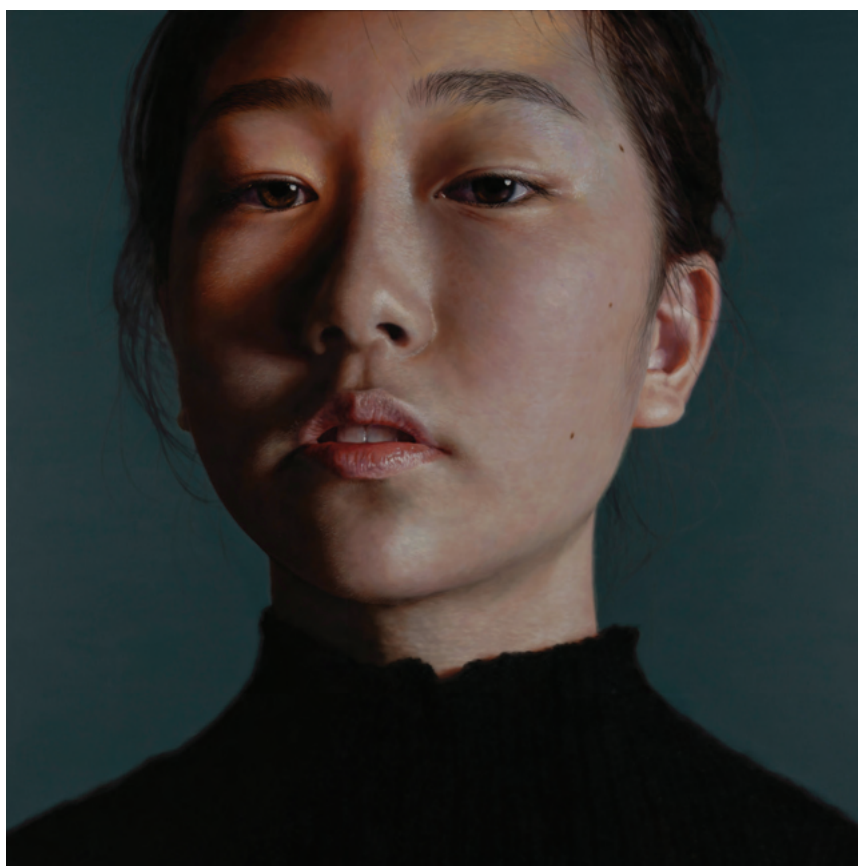
86.6 x 59.8 in (220 x 152 cm)

USD \$90,000

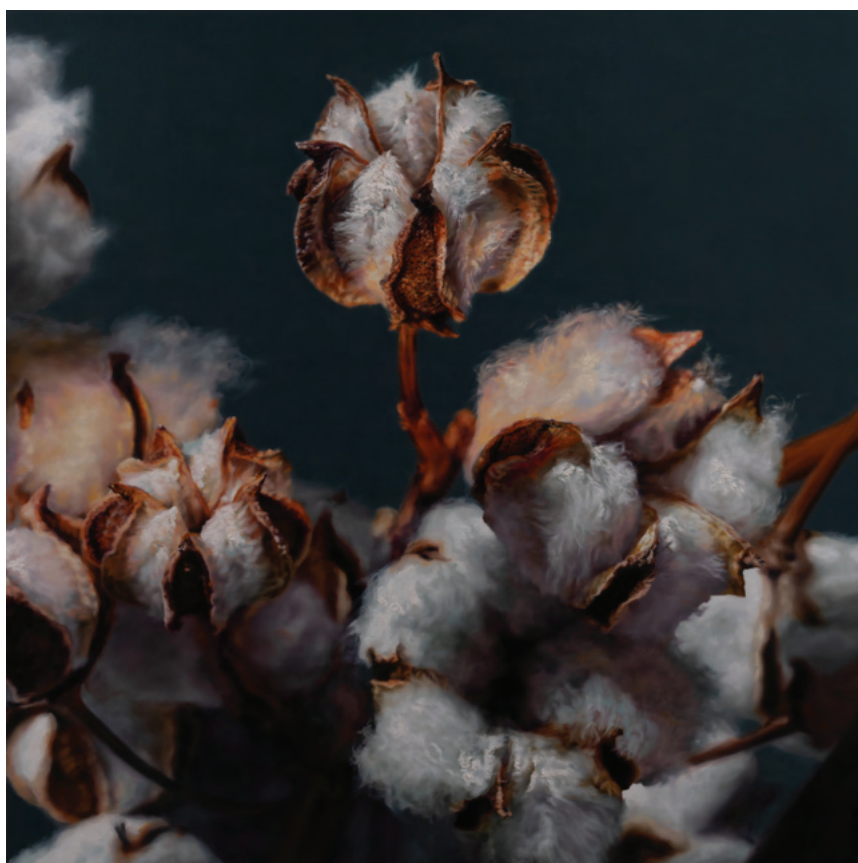
Kang Kang Hoon

b. 1979

Kang Kang Hoon's portrait series not only captures external features but also delves into the deeper emotional essence of each subject, inviting viewers to confront their true selves. His daughter, a recurring motif, serves as both the focal point of the artwork and a reflection of Kang himself. In a recent oil painting series, Kang incorporates symbolic object cotton, inspired by a yearning for his recently deceased mother. The contrast between withered branches and bloomed cotton subtly conflicts and harmonizes, contemplating intergenerational connections. Employing cotton as a metaphor for the enduring connections within humanity, Kang explores broad themes of the past and future on the delicate realm between figuration and abstraction. Major exhibitions featuring his works include the Jeju Museum of Art, Jeju; Wooyang Museum of Contemporary Art, Gyeongju; Clayarch Gimhae Museum, Gimhae; Gyeonggi Provincial Museum, Ansan; Jeju Museum of Contemporary Art, Jeju; Gyeongnam Art Museum, Changwon, and Seoul Museum of Art, Seoul. His works are in the collection of the National Museum of Modern and Contemporary Art. He has been featured and sold out at numerous art fairs worldwide, including Hong Kong, Singapore, and Shanghai, and he continues to remain active internationally as one of the most recognizable, leading artists in Korean contemporary art today.



Kang Kang Hoon
After Sunset (240709), 2024
Oil on Canvas
59 x 59 in (150 x 150 cm)
USD \$25,000



Kang Kang Hoon
After Sunset (240725), 2024
Oil on Canvas
59 x 59 in (150 x 150 cm)
USD \$25,000



Bosco Sodi

b. 1970

Bosco Sodi is an artist working globally, known for his densely textured paintings and objects with rich and vivid colors. His paintings are crystallized forms of arduous physical application; a constant cultivation of removing any hint of his own intent in the painting and populating the surface with the essence of material and fortuitous development. The artist works with the canvas laid down horizontally, applying a viscous mixture of soil, sawdust, glue and pigment to aggregate and then left to solidify over time. This process is a performance of sorts. That performance may last up to several months, with each accumulated strata of material testimony to the artist's actions. Eventually, in that process, the layers cleft, and that is when the performance ends. From then on, all is left to time and nature's forces. Cracks appear naturally on the surface and traces of material transforming from the material to the substrate to the whole of the artwork - a strikingly formal experiment in painting.



Bosco Sodi
Untitled (BS 41035), 2024
Mixed Media on Canvas
10.5 x 6.7 in (26.5 x 17.5 cm)
USD \$18,000

Lee So Yeun

b. 1971

Lee So Yeun's self-portraits, reminiscent of identification photos, vividly depict snapshots of her life's journey and the epochs she has navigated. Depicted with bold forms and luminous hues, the objects laden with multiple meanings evoke a subtle theatrical atmosphere and an unusual intimacy. It weaves together elements of similarity and contrast, delicately balancing between closeness and estrangement. Lee So Yeun majored in Western painting in South Korea and continued her studies at the Münster Kunst Academy in Germany. Her nomination for Düsseldorf's "Emprise Art Prize" catalysed her recognition within the German art sector. By 2005, she earned the "Young Artist Award" from the Columbus Art Foundation in Ravensburg. From 2006, she collaborated exclusively with Düsseldorf's esteemed Conrad Gallery, achieving international acclaim at renowned art fairs including the Cologne Art Colony in Germany, Show Off in Paris, ARCO in Madrid, and Scope and Pulse Art Fairs in New York. She has showcased solo exhibitions at Kunsthaus Essen (2014), Johyun Gallery (2014), and Space K (2013). She also participated in notable group exhibitions at the Gyeonggi Museum of Modern Art (2018), Sejong Centre (2017), Amway Museum (2016), Pohang Museum of Steel Art (2015), and Gallery Lux (2015). Currently, her works are part of collections at TCB collection in Japan, Achenbach Art Consulting in Germany, the Columbus Foundation, and t.VIS.t Communication in Madrid, Spain.



Lee So Yeun
Blackcat Mask, 2024
Oil on Canvas
46 x 36 in (116.8 x 91cm)
USD \$13,000





Lee So Yeun
Blackcat Mask, 2024
Oil on Canvas
46 x 36 in (116.8 x 91cm)
USD \$13,000

Lee Kwang Ho

b. 1967

Lee Kwang Ho is a representative figure in realism paintings. He takes daily subject matters and takes the reproduction of their forms into a unique language of his own. Although realism seems like quite a laborious task and sometimes compulsive as well, through the pictorial depiction of Lee Kwang Ho, we see the reconstructed reality fabricated by his intentions. Subjects that are expressed both vigorously and dramatically expose the desires of their subconscious, and also stimulates the tactility of those that behold them. In his wetland series, he experiments with techniques like scratching and tapping on the canvas. Upon closer inspection, the depicted subjects dissolve, leaving behind a layer of paint with precise brushstrokes and meticulous knife work, which emphasizes the exploration of the fundamental question of painting - the act of painting itself. Lee Kwang Ho has held solo exhibitions in various venues, including Johyun Gallery, Busan; Kukje Gallery, Seoul; and Chang dong Studio Gallery, Seoul; and has participated in group exhibitions at Seoul Museum of Art, Seoul; Busan Museum of Art, Busan; Gana Art Center, Seoul; and Saatchi Gallery, London. His works are included in prestigious collections such as the National Museum of Modern and Contemporary Art, Seoul; the Seoul Museum of Art, Seoul; the Gyeonggi Museum of Art, Ansan and the Jeju Museum of Art.



Lee Kwang Ho
Untitled 4652-74, 2024
Oil on Canvas
67 x 59 in (170 x 150cm)
USD \$33,000



Kim Chong Hak

b. 1937

Kim Chong Hak, often referred to as Flower's Painter, is celebrated for his abstract art that emphasizes the inherent beauty of nature. His creative process involves internalizing the joy found in nature and reimagining it onto canvas. In the 1980s, Kim immersed himself in the Seoraksan Mountain, both in theme and living, inspired by its distinct seasonal traits, with a different name for each season. He still speaks fondly of his time in the mountains and his artistic expression of the seasons' colors. His work has been featured in major international exhibitions and projects, including: the Busan Museum of Art, Busan; Vitality at Galerie Perrotin, Paris; Musée Guimet, Paris; SeMA Nam Seoul Living Art Museum, Seoul; Whanki Museum, Seoul; Ewha Museum, Seoul; Kumho Museum, Seoul. Kim Chong Hak's work is in the permanent collections of many museums including the National Museum of Korea; National Museum of Modern and Contemporary Art, Korea; Leeum, Samsung Museum of Art, Korea; Seoul Museum of Art, Korea; and Busan Museum of Art, Busan, Korea. Currently, the Kim Chong Hak Museum is in plans to be built in Busan, whereas the Architect Kengo Kuma participates as a designer.



Kim Chong Hak

Untitled, 2022

Watercolor on hanji paper

13 x 11.5 in, Framed 17.5 x 14.3 x 1.7 in (33 x 29 cm, Framed 44.3 x 36.3 x 4.3 cm)

USD \$5,000



Kim Chong Hak

Untitled, 2022

Watercolor on hanji paper

13 x 11.5 in, Framed 17.5 x 14.3 x 1.7 in (33 x 29 cm, Framed 44.3 x 36.3 x 4.3 cm)

USD \$5,000



Kim Chong Hak

Untitled, 2022

Watercolor on hanji paper

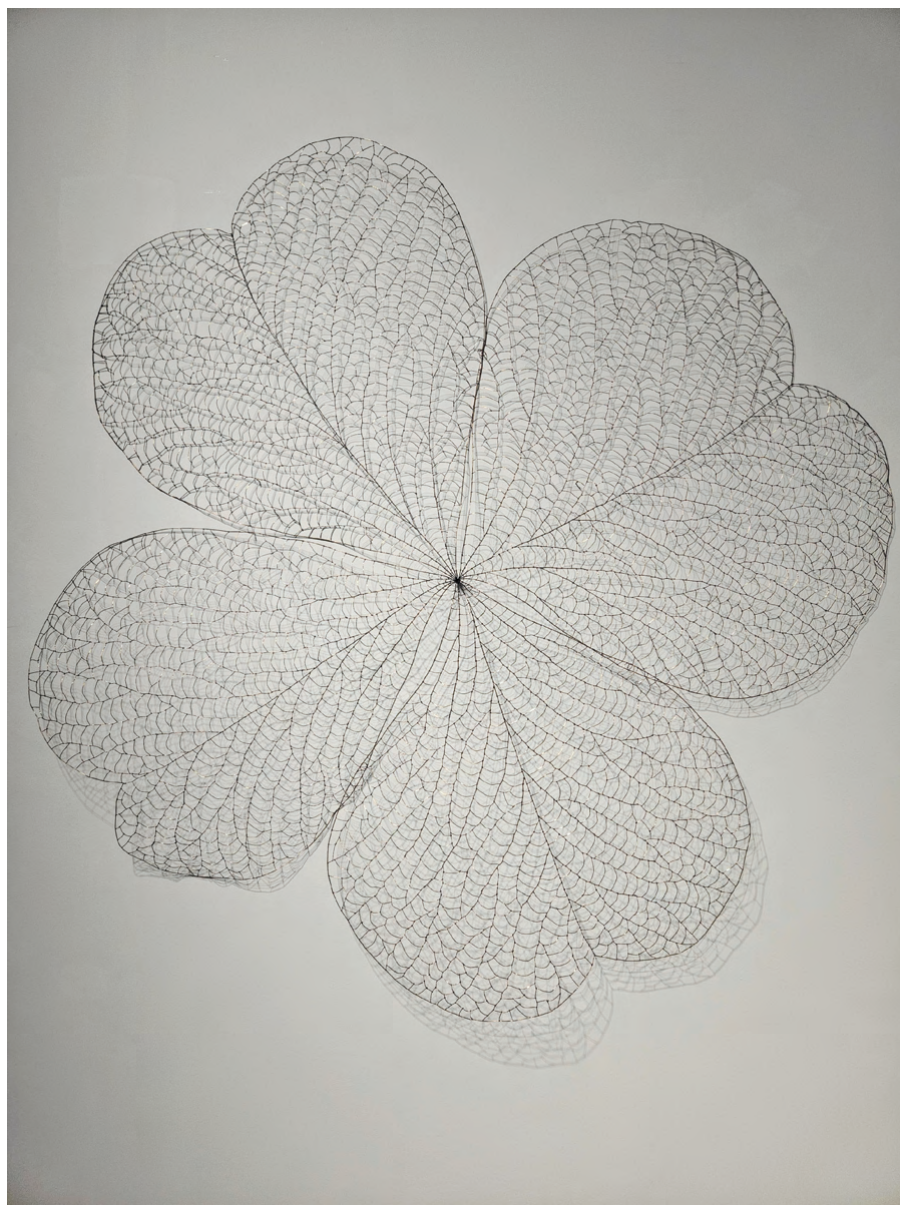
13 x 11.5 in, Framed 17.5 x 14.3 x 1.7 in (33 x 29 cm, Framed 44.3 x 36.3 x 4.3 cm)

USD \$5,000

Johyun Gallery

Jung Kwang-Ho

b. 1959



Jung Kwang Ho
The Flower 21160, 2021
Cooper Wire
63 x 63 in (160 x 160 cm)
USD \$22,000



**THE
ARMORY
SHOW**

SEPTEMBER 6-8
JAVITS CENTER