

JEFFREY DEITCH AT ART BASEL 2024

BOOTH DESIGN BY CHARLAP HYMAN & HERRERO

HALL 2.1 BOOTH L25



The drawing room at Edward James's Monkton House. Photo by Elizabeth Whiting & Associates / Alamy Stock Photo

Live the Art

WITH WORKS BY:

NINA CHANEL ABNEY • ISABELLE ALBUQUERQUE • MARIO AYALA

TYLER BALLON • BISA BUTLER • JUDY CHICAGO • MYRLANDE CONSTANT

KARON DAVIS • CELESTE DUPUY-SPENCER • URS FISCHER

DOMINIQUE FUNG • ALFONSO GONZALEZ JR • ALTERONCE GUMBY

HAAS BROTHERS • KEITH HARING • ELLA KRUGLYANSKAYA

AUSTIN LEE • ZOÉ BLUE M • CLAES OLDENBURG • BONY RAMIREZ

RAMMELLZEE • ALAKE SHILLING • SWOON

AND MANY OTHERS



Nina Chanel Abney
Untitled, 2022
Diptych collage on panel
82 x 60 inches, each
(208.3 x 152.4 cm, each)

\$375,000



Ella Kruglyanskaya

When in Rome, 2024

Oil on linen

89 x 75 inches

(226.1 x 190.5 cm)

\$75,000



Ella Kruglyanskaya
Skeleton Closet III, 2024
Oil on linen mounted on panel
30 x 22 inches
(76.2 x 55.9 cm)

\$30,000



Keith Haring

Untitled (Crib and Dresser Set), 1986

Black and yellow enamel on wood crib and dresser

Dresser: 43 x 38 x 17 inches (109.2 x 96.5 x 43.2 cm)

Crib: 53.5 x 41 x 30 inches (135.9 x 104.1 x 76.2 cm)

\$750,000



Bisa Butler

Down, down baby, 2024

After Girls Playing in Water, 1956 by Gordon Parks

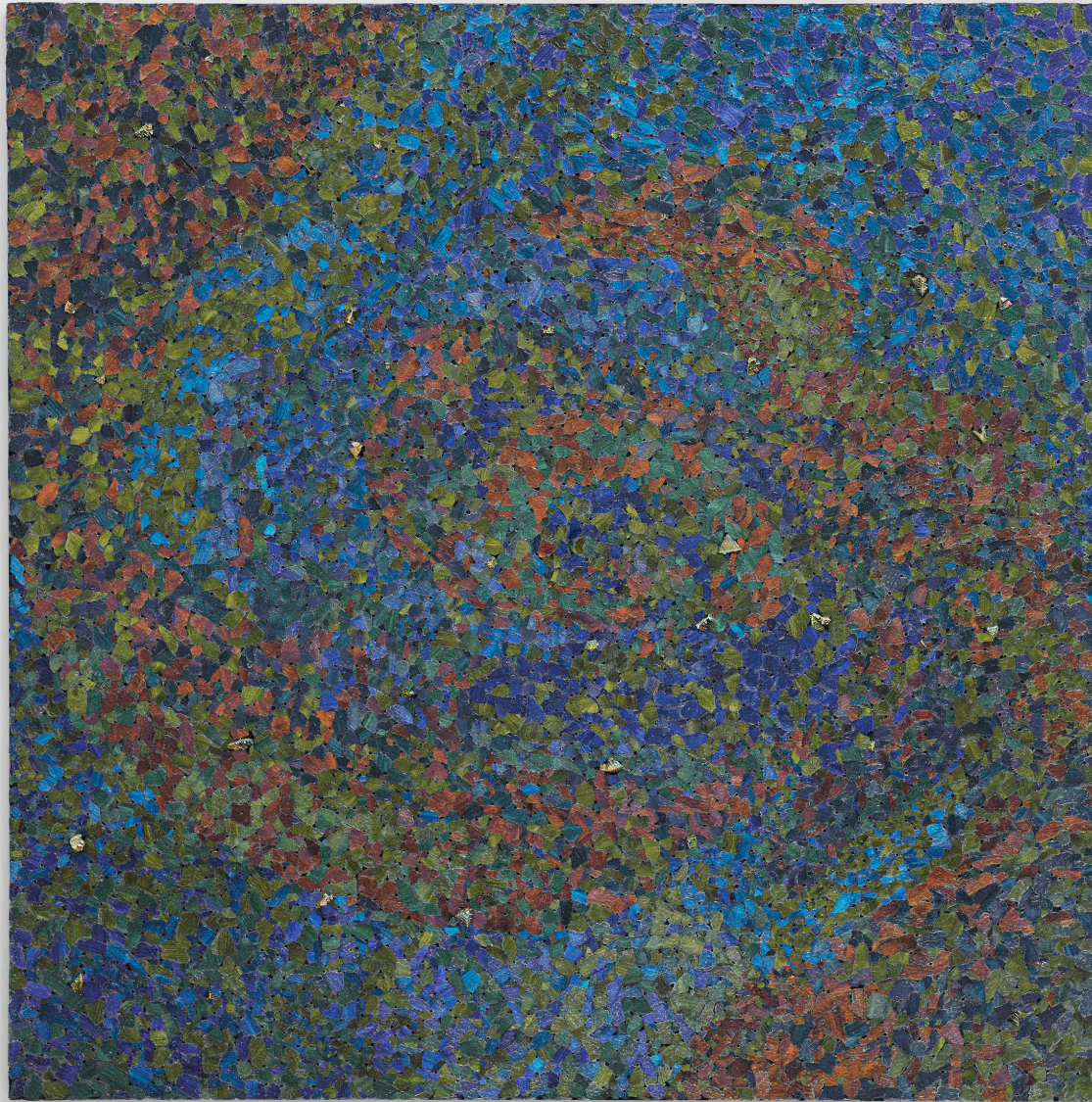
Cotton, silk, vinyl, velvet, lace netting, polyester, quilted and appliquéd

107 x 105 inches

(271.8 x 266.7 cm)

\$175,000

RESERVED



Alteronce Gumby

Laws of the Universe, 2024

Bismuth, glass, and acrylic on panel

72 x 72 inches

(182.9 x 182.9 cm)

\$50,000



Myrlande Constant

Saint Nicola de Bari Toutes Les Loa, 2020

Glass seed and bugle beads, sequins, tassels, and specialty beads on fabric

79 x 89 inches
(200.7 x 226.1 cm)

\$80,000
RESERVED



Myrlande Constant

Marasa 3, 1995

Seed beads on linen

31.5 x 33 inches

(80 x 83.8 cm)

\$30,000



Myrlande Constant

La Sirene, 1995

Seed beads and sequins on linen

28.5 x 37 inches

(72.4 x 94 cm)

\$30,000



Urs Fischer

John (The Color of NY Summer), 2017

Aluminum panel, aramid honeycomb, two-component polyurethane adhesive, two-component epoxy primer, galvanized steel rivet nuts, acrylic primer, gesso, acrylic ink, acrylic silkscreen medium, acrylic paint, oil medium

Framed: 97.5 x 73.5 x 2.13 inches

(247.7 x 186.7 x 5.4 cm)

\$450,000



Urs Fischer

Night Stand, 2017

Aluminum panel, aramid honeycomb, two-component polyurethane adhesive, two-component epoxy primer, galvanized steel rivet nuts, acrylic primer, gesso, acrylic ink, acrylic silkscreen medium, acrylic paint, oil medium
Framed: 97.5 x 73.5 x 2.13 inches
(247.7 x 186.7 x 5.4 cm)

\$450,000



Claes Oldenburg

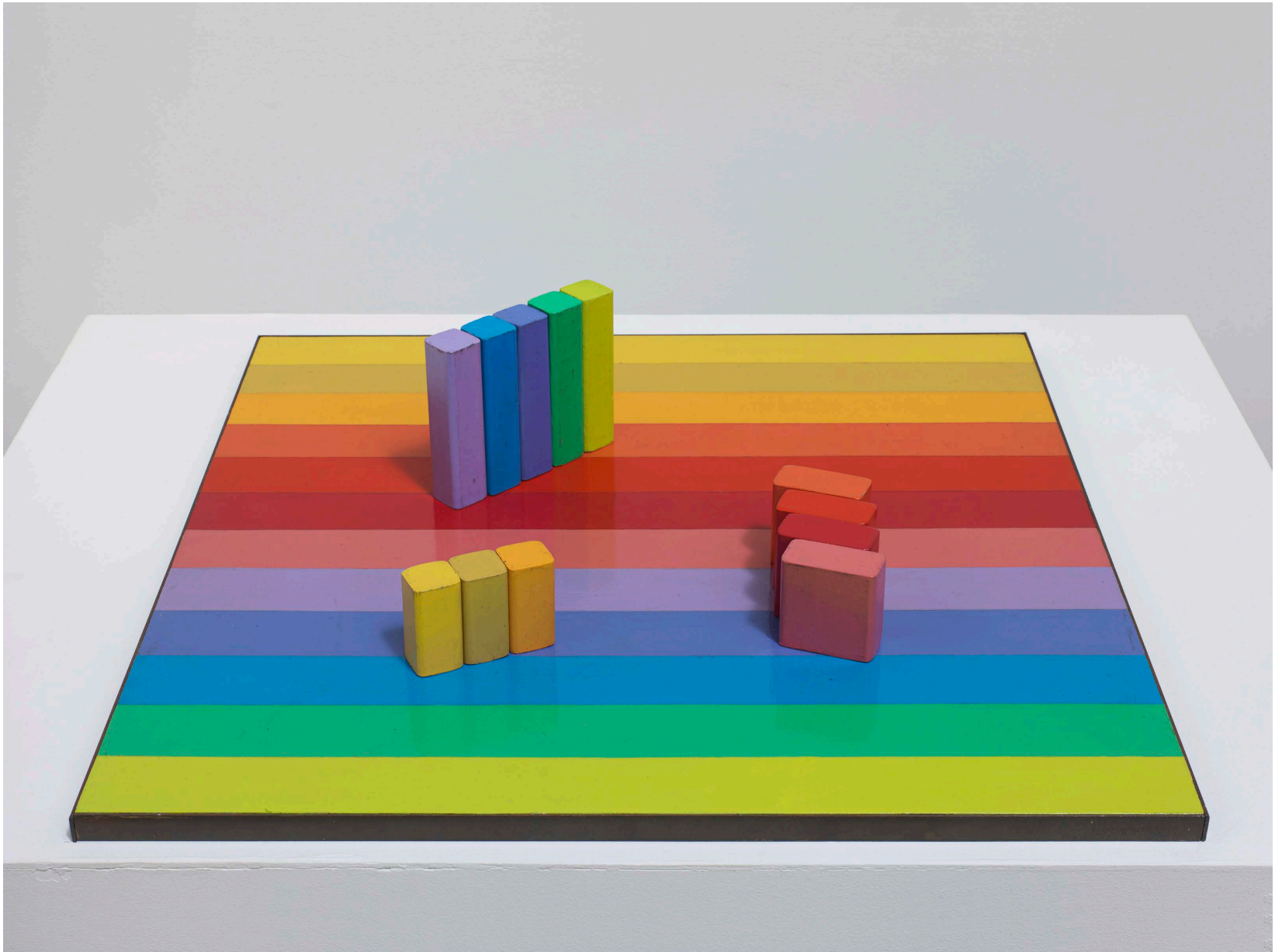
Fan - Hard Model, 1965-1966

Cardboard, spray enamel, crayon, straight pins

42 x 28.5 x 18 inches

(106.7 x 72.4 x 45.7 cm)

\$375,000



Judy Chicago

Multicolor Rearrangeable Game Board, 1965-1966

Acrylic on wood

18 x 18 inches

(45.7 x 45.7 cm)

\$150,000



Judy Chicago

Study for Driving the World to Destruction, version I, 1985

Sprayed acrylic and prisma-color on paper

27.5 x 36.5 inches (69.9 x 92.7 cm)

Framed: 31.13 x 44.13 inches (79.1 x 112.1 cm)

\$75,000



Judy Chicago

Study for Fresno Fan, 1971

Prismacolor on board

10 x 20 inches (25.4 x 50.8 cm)

Framed: 14.25 x 24.25 inches (36.2 x 61.6 cm)

\$85,000



Judy Chicago

Drawing for Flesh Gardens/Sun Garden, 1970

Prismacolor on board

22 x 22 inches (55.9 x 55.9 cm)

Framed: 25.88 x 25.63 inches (65.7 x 65.1 cm)

\$85,000



Judy Chicago
Drawing for Flesh Gardens/Greenglow, 1971
Prismacolor on paper
24 x 28 inches (61 x 71.1 cm)
Framed: 26 x 31.88 inches (66 x 81 cm)

\$85,000



Judy Chicago
Study for Flesh Gardens/Big Blue Pink, 1971
PrismaColor on paper
22 x 22 inches (55.9 x 55.9 cm)
Framed: 24.25 x 24.25 inches (61.6 x 61.6 cm)

\$85,000



Judy Chicago

Optical Shapes #6, 1969

Acrylic on mat board

7.5 x 7.5 inches (19.1 x 19.1 cm)

Framed: 10.5 x 10.5 x 1.5 inches (26.7 x 26.7 x 3.8 cm)

\$45,000



Swoon

Alixa and Naima, 2024

Coffee stained blockprint on mylar with hand painted acryla-gouache embellishments

101 x 73 inches

(256.5 x 185.4 cm)

\$32,000



Karon Davis
Smoking Ballerina, 2023
Bronze
39 x 39 x 72 inches
(99.1 x 99.1 x 182.9 cm)
Edition of 3, 2 APs

\$225,000



Dominique Fung

A Sunken Historical Shipwreck, 2024

Oil on linen

51 x 40.5 x 1.38 inches

(129.5 x 102.9 x 3.5 cm)

\$80,000



Dominique Fung

A Sunken Historical Treasure discovered 1,500 Meters below the surface, 2024

Oil on linen

51 x 40.5 x 1.38 inches

(129.5 x 102.9 x 3.5 cm)

\$80,000



Dominique Fung
Handbell, 2020
Oil on canvas
54 x 60 inches
(137.2 x 152.4 cm)

\$100,000



Dominique Fung
Still Life with Lobster, 2020
Oil on canvas
39.7 x 39.7 inches
(100.8 x 100.8 cm)

\$75,000



Zoé Blue M

La Valette, 2024

Acrylic and paper on canvas

83 x 52 inches

(210.8 x 132.1 cm)

\$22,000



Austin Lee
City with Bird, 2024
Oil on wood
24 x 24 x 1.63 inches
(61 x 61 x 4.1 cm)

\$15,000



Austin Lee
In Bed, 2024
Oil on wood
24 x 24 x 1 inches
(61 x 61 x 2.5 cm)

\$15,000



Alake Shilling

mama bupp and baby kiss in paradise what a wonderful world, 2024

Oil, acrylic, glitter, epoxy on canvas

50 x 54 inches

(127 x 137.2 cm)

\$30,000



Alake Shilling

Buggy Bear on a Star Studded Beach Adventure, 2021
Oil paint, glitter, sand, styrofoam balls and salt on canvas
60 x 72 x 2.5 inches
(152.4 x 182.9 x 6.4 cm)

\$35,000



Bony Ramirez

Fiera: Mother Nature del Caribe, 2023

Acrylic, oil pastel, colored pencil, Bristol paper on wood panel

84 x 60 inches

(213.4 x 152.4 cm)

\$40,000



Mario Ayala
be my baby (ronettes), 2022
Acrylic on canvas
15.75 x 28 inches
(40 x 71.1 cm)

\$28,000



Tyler Ballon

Picking Them Up, Laying Them Down, 2024

Oil paint on canvas

64 x 78 inches

(162.6 x 198.1 cm)

\$35,000



Alfonso Gonzalez Jr.

La Sombra Botánica, 2024

Oil, enamel, latex, dirt, gel medium on canvas mounted to wood panel

60 x 72 inches

(152.4 x 182.9 cm)

\$30,000



Celeste Dupuy-Spencer

Copy Tinto Again, 2023

Oil on canvas

16 x 20.25 x 0.75 inches

(40.6 x 51.4 x 1.9 cm)

\$35,000



Celeste Dupuy-Spencer

Fracture, Ruptured (Violation of Innocents), 2024

Oil on canvas

9 x 12 x 0.75 inches

(22.9 x 30.5 x 1.9 cm)

\$18,000



Isabelle Albuquerque
Summertime Sadness, 2024
Fire painted bronze, human hair
4 x 10 x 31 inches
(10.2 x 25.4 x 78.7 cm)
Edition 1 of 3, 1 AP

\$15,000



Haas Brothers
Tree Hemingway, 2022
Wool rug
88 x 98 x 1.5 inches
(223.5 x 248.9 x 3.8 cm)
Edition 1 of 6, 2 APs

\$55,000



Sascha Braunig
Backbone, 2016
Oil on linen over panel
54 x 22 inches
(137.2 x 55.9 cm)

\$75,000



Emily Mae Smith

King Lear, 2015

Oil on linen

38 x 30 inches

(96.5 x 76.2 cm)

\$125,000



Jules de Balincourt
After the Gold Rush, 2004
Oil and enamel on panel
65 x 44 inches
(165.1 x 111.8 cm)

\$85,000



FUTURA
THE DIXIE CLUB, 2023
Aerosol and acrylic on canvas
65.5 x 50.5 inches
(166.4 x 128.3 cm)

\$75,000



Rammellzee

Tower's of Panzerism Mega Stroke, 1991

Mixed media, spray paint, collage, found objects and resin on cardboard, in artist frame

44.5 x 36.5 x 2.5 inches

(113 x 92.7 x 6.4 cm)

\$450,000



Rammellzee

Untitled, 1986

Mixed media, spray paint, marker and collage on paper

33 x 160 inches
(83.8 x 406.4 cm)

\$275,000



Rammellzee

Untitled (Bands of Steel), 1985

Acrylic and spray paint on carpet, in artist frame

40.25 x 31.75 inches

(102.2 x 80.7 cm)

\$250,000



Rammellzee

Bands of Steel - AC/DC, c. 1985-1897

Acrylic and spray paint on carpet mounted on wood, in artist frame

41 x 33 x 1 inches

(104.1 x 83.8 x 2.5 cm)

\$250,000



Rammellzee

Mechanism Paladin Protractor Divider of the Argo, 1982

Mixed media, spray paint, marker, pen and acrylic on cardboard

24 x 34 x 2 inches

(61 x 86.4 x 5.1 cm)

\$125,000



Rammellzee

Untitled, 1985

Spray, marker, pen and collage on board

21 x 29 inches

(53.3 x 73.7 cm)

\$85,000