

JEFFREY DEITCH **at ART BASEL PARIS**

BOOTH A48 OCTOBER 16-OCTOBER 20, 2024 INFO@DEITCH.COM

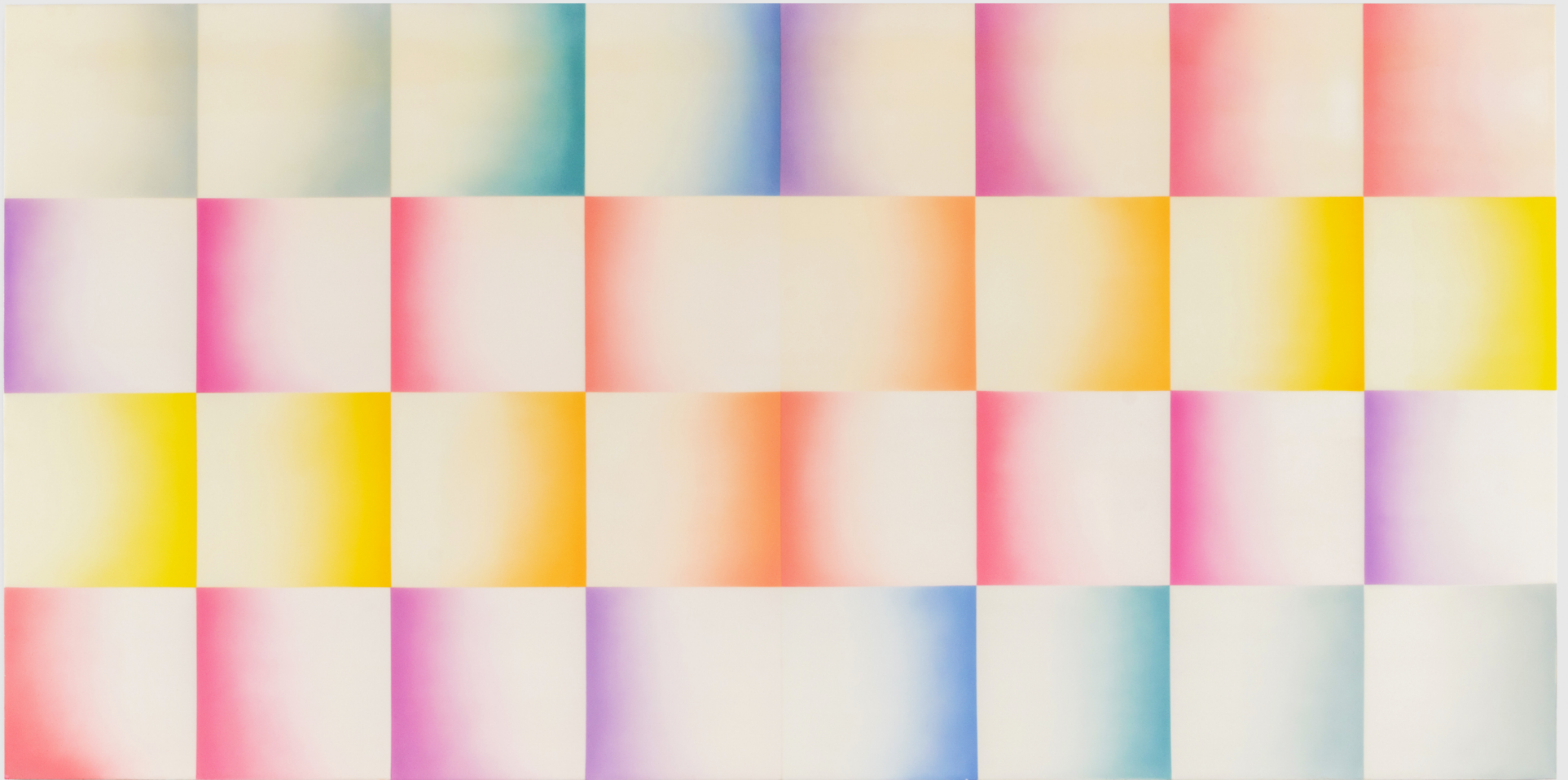
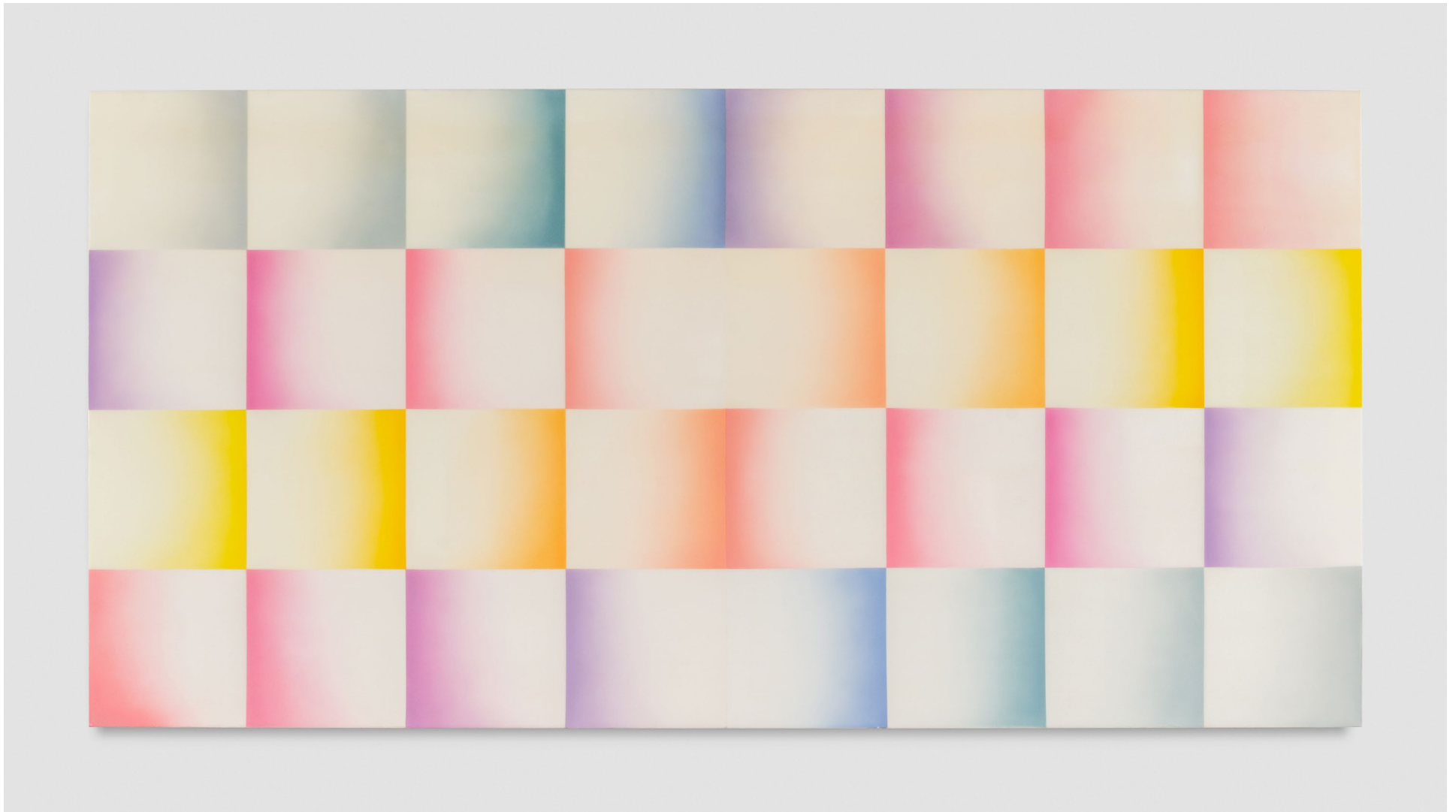


IMAGE: JUDY CHICAGO, *FLESH FAN*, 1971

**FEATURING HISTORIC WORKS BY
JUDY CHICAGO,
EVELYNE AXELL, TERESA BURGA,
LEONOR FINI, AND KIKI KOGELNIK**



Judy Chicago

Flesh Fan, 1971

Sprayed acrylic lacquer on acrylic

60 x 120 inches

(152.4 x 304.8 cm)

\$1,500,000



Judy Chicago

Study for Fresno Fan, 1971

Prismacolor on board

10 x 20 inches (25.4 x 50.8 cm)

Framed: 14.25 x 24.25 inches (36.2 x 61.6 cm)

\$85,000



Judy Chicago

Drawing for Flesh Gardens/Sun Garden, 1970

Prismacolor on board

22 x 22 inches (55.9 x 55.9 cm)

Framed: 25.88 x 25.63 inches (65.7 x 65.1 cm)

\$85,000



Judy Chicago
Drawing for Flesh Gardens/Greenglow, 1971
PrismaColor on paper
24 x 28 inches (61 x 71.1 cm)
Framed: 26 x 31.88 inches (66 x 81 cm)

\$85,000



Judy Chicago

Study for Flesh Gardens/Big Blue Pink, 1971

PrismaColor on paper

22 x 22 inches (55.9 x 55.9 cm)

Framed: 24.25 x 24.25 inches (61.6 x 61.6 cm)

\$85,000



Judy Chicago

Study for Driving the World to Destruction 2, 1983

Prismacolor on paper

19 x 26 inches (48.3 x 66 cm)

Framed: 26.38 x 33.38 x 1 inches (66.9 x 84.8 x 2.5 cm)

\$60,000



Judy Chicago
Study for Would Men and Women Be Equal? Banner 2/9, 2019
Prismacolor on paper
22 x 30 inches (55.9 x 76.2 cm)
Framed: 24.5 x 32 inches (62.2 x 81.3 cm)

\$45,000



Judy Chicago

Study for Would Both Women and Men Be Gentle? Banner 3/8, 2019

Prismacolor on paper

22 x 30 inches (55.9 x 76.2 cm)

Framed: 24.5 x 32 inches (62.2 x 81.3 cm)

\$45,000



Judy Chicago

Study for Would Both Men and Women Be Strong? Banner 4/7, 2019

Prismacolor on paper

22 x 30 inches (55.9 x 76.2 cm)

Framed: 24.5 x 32 inches (62.2 x 81.3 cm)

\$45,000



Judy Chicago
Study for Would There Be Equal Parenting? Banner 5/6, 2019
Prismacolor on paper
22 x 30 inches (55.9 x 76.2 cm)
Framed: 24.5 x 32 inches (62.2 x 81.3 cm)

\$45,000



Judy Chicago
Study for Would Old Women Be Revered? Banner 6/5, 2019
Prismacolor on paper
22 x 30 inches (55.9 x 76.2 cm)
Framed: 24.5 x 32 inches (62.2 x 81.3 cm)

\$45,000



Judy Chicago

Study for Would Buildings Resemble Wombs? Banner 7/4, 2019

Prismacolor on paper

22 x 30 inches (55.9 x 76.2 cm)

Framed: 24.5 x 32 inches (62.2 x 81.3 cm)

\$45,000



Judy Chicago

Study for Would There Be Private Property? Banner 8/3, 2020

Prismacolor on paper

22 x 30 inches (55.9 x 76.2 cm)

Framed: 24.5 x 32 inches (62.2 x 81.3 cm)

\$45,000



Judy Chicago
Study for Would There Be Violence? Banner 9/2, 2019
Prismacolor on paper
22 x 30 inches (55.9 x 76.2 cm)
Framed: 24.5 x 32 inches (62.2 x 81.3 cm)

\$45,000



Judy Chicago
Study for Would the Earth Be Protected? Banner 10/1, 2020
Prismacolor on paper
22 x 30 inches (55.9 x 76.2 cm)
Framed: 24.5 x 32 inches (62.2 x 81.3 cm)

\$45,000



Evelyne Axell

La queue dans le plat, 1967

Oil on panel

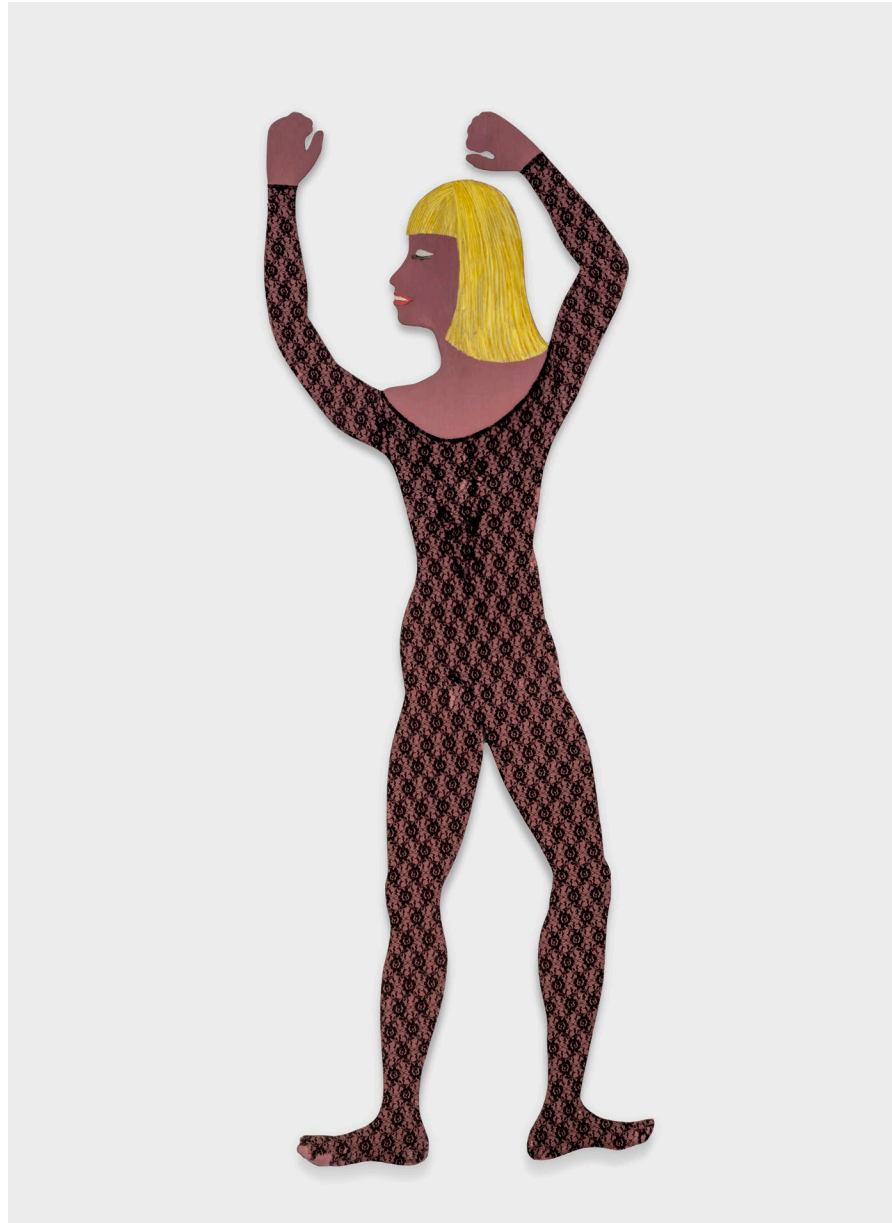
Diameter: 39.75 inches
(101 cm)

\$275,000



Evelyne Axell
Coeur princé, 1967
Oil on panel
Diameter: 39.75 inches
(101 cm)

\$275,000



Teresa Burga

Sin Titulo/Untitled, 1967

Acrylic on plywood and collage

72.4 x 27.6 inches

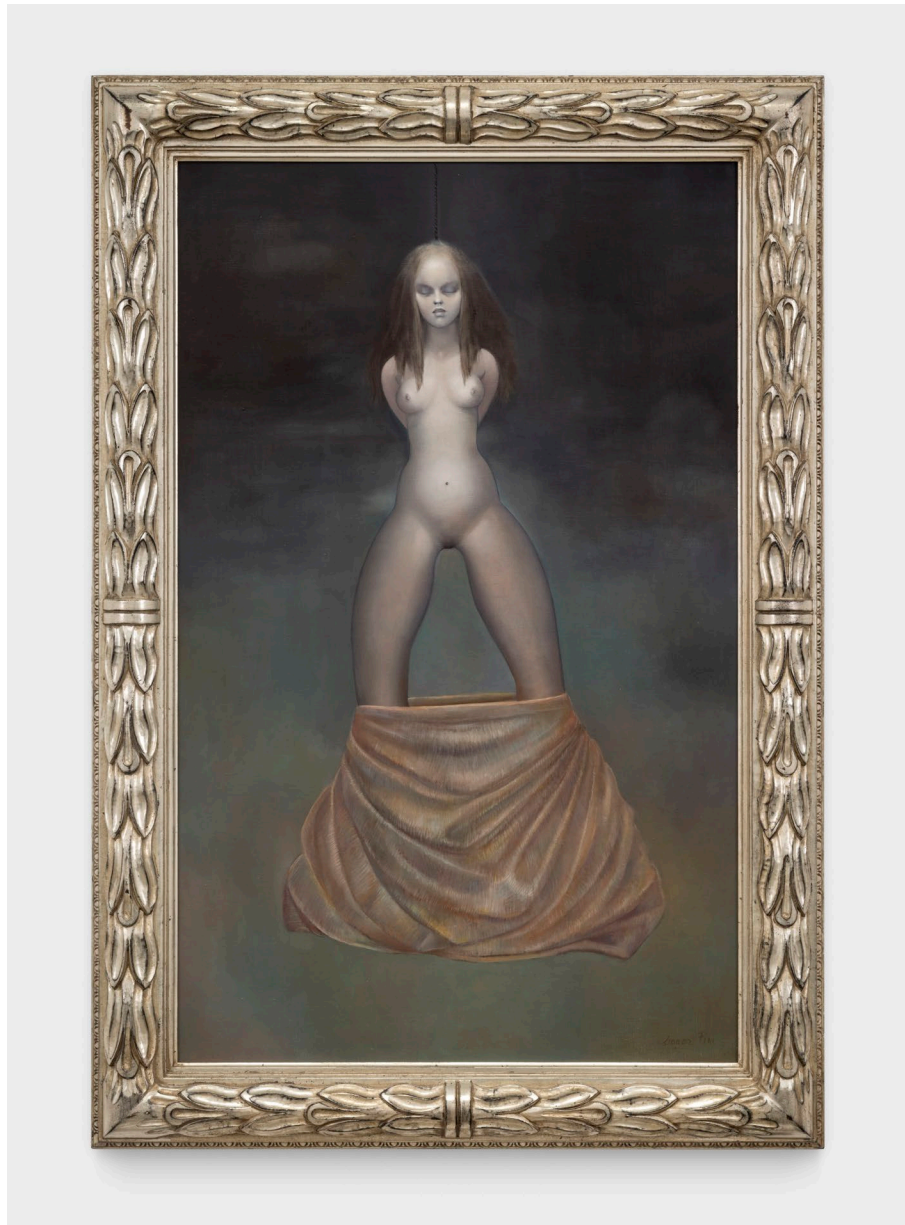
(183.9 x 70.1 cm)

\$225,000



Leonor Fini
Portrait de Madame H, 1942
Oil on canvas
23.6 x 18 inches
(59.9 x 45.7 cm)

\$1,250,000



Leonor Fini
La Perle, 1978
Oil on canvas
49.2 x 26 inches
(124.9 x 66 cm)

\$750,000



Kiki Kogelnik

Untitled (Female Figures with Leaves), 1974

Oil and acrylic on canvas

63.75 x 60.13 inches (162.2 x 152.8 cm)

Framed: 65.75 x 61.63 x 2.75 inches (167 x 157.2 x 7 cm)

\$305,000

**WORKS BY
ISABELLE ALBUQUERQUE, BISA BUTLER,
MYRLANDE CONSTANT, KARON
DAVIS, CHEYENNE JULIEN, ELLA
KRUGLYANSKAYA, ZOÉ BLUE M., AND
ALAKE SHILLING**



Isabelle Albuquerque

Flower for Paris, 2024

Stainless steel, beach log burnt from within

20 x 18 x 9 inches

(50.8 x 45.7 x 22.9 cm)

\$15,000



Bisa Butler

Éblouissante, 2024

Silk, lace, netting, glitter, rhinestones, quilted and appliquéd

42 x 38 inches

(106.7 x 96.5 cm)

\$75,000



Karon Davis
Standing Nude, 2024
Plaster, steel, wood and glass eyes
86 x 42 x 30 inches
(218.4 x 106.7 x 76.2 cm)

\$125,000



Cheyenne Julien
Spirit Gun, 2024
Oil and acrylic on canvas
48 x 36 inches
(121.9 x 91.4 cm)

\$30,000



Ella Kruglyanskaya

See Saw (Equilibrium), 2024

Oil on linen

Diptych, overall: 84 x 132 inches

(213.3 x 335.2 cm)

\$95,000



Ella Kruglyanskaya
Street Corner (in Blue), 2024
Oil on linen
90 x 68 inches
(228.6 x 172.7 cm)

\$75,000



Zoé Blue M.
Take Two, 2024
Acrylic on canvas
42 x 46 inches
(106.6 x 116.8 cm)

\$15,000



Alake Shilling

Permanent Ecstasy, 2024

Acrylic, styrofoam, glitter, sand, cardboard, epoxy on canvas

48 x 48 inches

(121.9 x 121.9 cm)

\$30,000

**A SPECIAL PRESENTATION OF WORKS BY
RAMMELLZEE**



Rammellzee

Untitled (Bands of Steel), 1985

Acrylic and spray paint on carpet

40.25 x 31.75 inches

(102.2 x 80.7 cm)

\$250,000



Rammellzee

Bands of Steel - AC/DC, c. 1985-1987

Acrylic and spray paint on carpet mounted on wood, in artist frame

41 x 33 x 1 inches

(104.1 x 83.8 x 2.5 cm)

Signed verso

\$250,000



Rammellzee

Knotted Minds, 1989

Spray paint, 35mm film strips and paper collage on board

30 x 40 inches

(76.2 x 101.6 cm)

\$135,000



Rammellzee

Midas Eyes (Blue), 1991

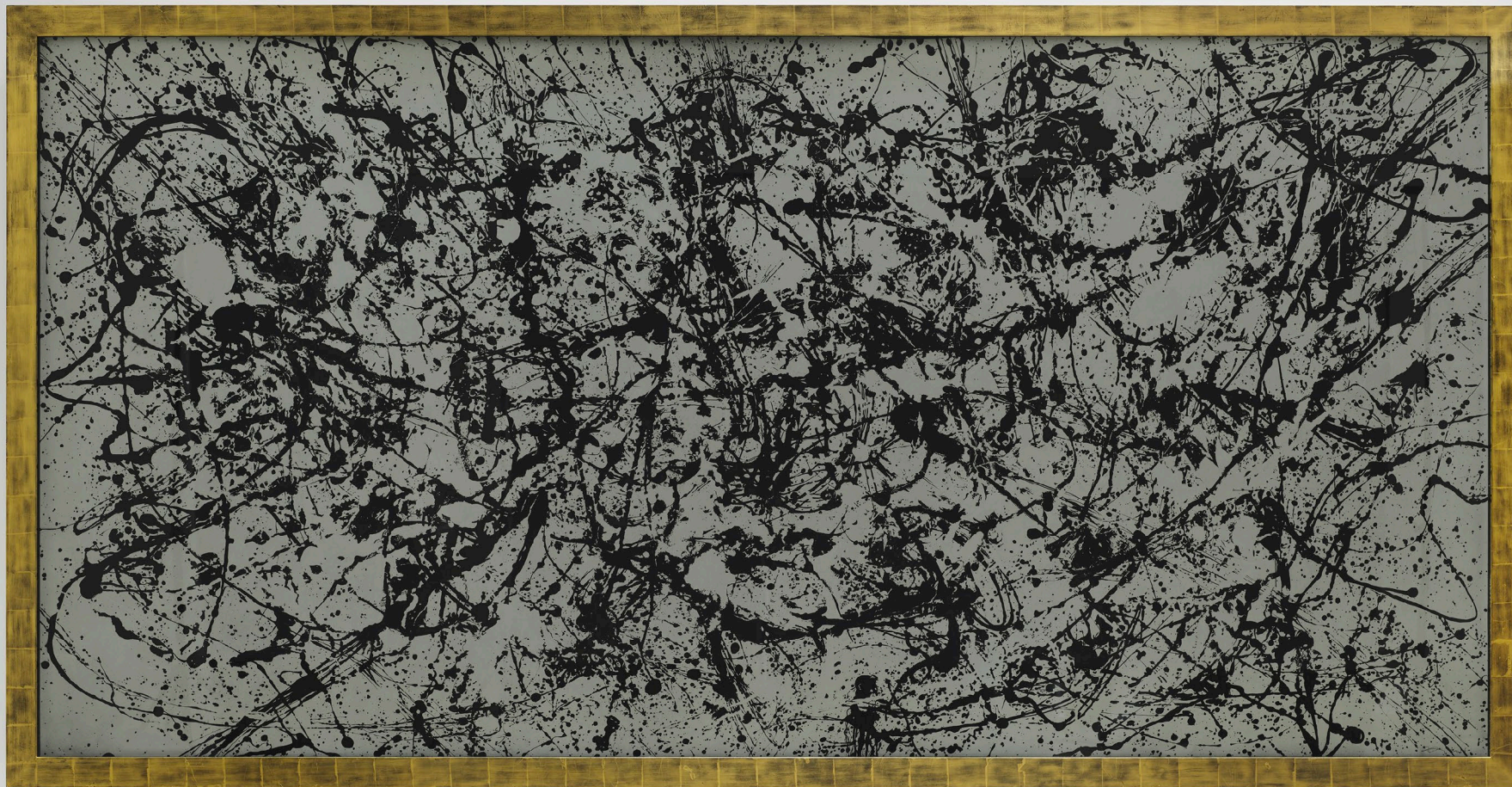
Mixed media, spray paint, 35mm film strips, printed paper collage on board

Framed: 36.75 x 46.75 x 1 inches

(93.4 x 118.8 x 2.5 cm)

\$180,000

**AND A MAJOR AFTER POLLOCK
"GHOST" DRAWING BY ROBERT LONGO**



Robert Longo

Untitled (Ghost), 2014

Charcoal on mounted paper

59.88 x 120 inches (152.1 x 304.8 cm)

Framed: 64.25 x 124.25 inches (163.2 x 315.6 cm)

\$850,000