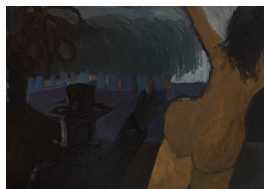


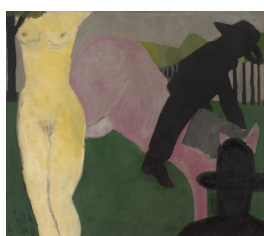
# ALEXANDRE

Art Basel Miami 2024  
Booth Pricelist  
11/26/24



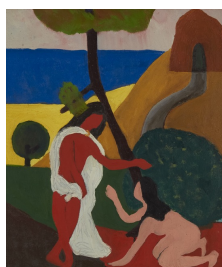
**Bob Thompson**  
*Goodbye, Come Back*, 1959  
oil on linen  
49 x 69 inches  
(BT 59.02)

\$1,350,000



**Bob Thompson**  
*Two and the Same*, 1960  
oil on canvas  
61 x 71 inches  
(BT 60.02)

\$1,350,000



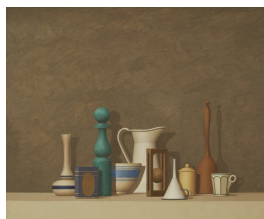
**Bob Thompson**  
*Untitled (Noli Me Tangere)*, 1961  
oil on canvas  
25 3/8 x 21 3/16 inches  
(BT 61.02)

\$600,000  
Sold



**Marsden Hartley**  
*New Mexico Recollection — Storm*,  
1923  
oil on canvas  
29 x 41 1/2 inches  
(MH 23.14)

POR



**William H. Bailey**  
*Straniero*, 2009  
oil on linen  
30 x 36 inches  
(WHB 09.01)

\$160,000



**Milton Avery**  
*Milliner*, 1945  
oil on canvas  
49 1/2 x 35 3/8 inches  
(MA 45.02)

\$1,650,000



**Lois Dodd**  
*Bee Approaching Touch Me Nots*,  
2006  
oil on linen  
36 x 44 inches  
(LD 06.15)

\$325,000  
On Reserve



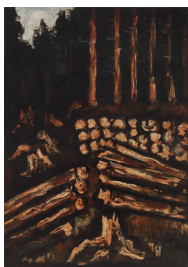
**Tom Uttech**  
*Ojichaagebiishin*, 2024  
oil on linen  
91 x 103 inches, including artist's hand  
painted frame  
(TU 24.07)

\$250,000



**Marsden Hartley**  
*Autumn, Dogtown Common*, 1934  
oil on board  
12 x 15 1/2 inches  
(MH 34.04)

\$185,000



**Marsden Hartley**  
*West Brooksville, Maine*, 1939  
oil on board  
22 x 16 inches  
(MH 39.06)

\$850,000



**Charles Burchfield**  
*March Clouds and Tree*, 1946  
watercolor on paper  
35 1/2 x 28 1/2 inches  
(CB 46.03)

\$320,000



**John La Farge**  
*Still Life with Waterlilies and  
Hibiscus*, 1865  
watercolor on paper  
12 x 15 1/4 inches  
(JLF 65.01)

\$85,000



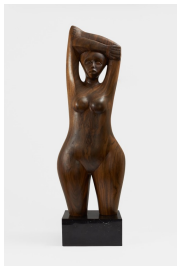
**Charles Demuth**  
*Single Peonies*, 1929  
watercolor on paper  
13 1/2 x 19 1/2 inches  
(CD 29.01)

\$320,000



**Charles Sheeler**  
*Summer Flowers*, 1927  
graphite and watercolor on paper  
22 3/4 x 14 inches  
(CSH 27.01)

\$185,000



**Elizabeth Catlett**  
*Untitled (Female Figure with Arms  
Raised)*, 1979  
carved wood  
32 1/2 x 10 x 7 inches  
(ELC 79.01)

\$550,000



**Georgia O'Keeffe**  
*Untitled (Green Apple on Dark Plate)*,  
1922  
oil on canvas  
8 x 7 inches  
(GO 22.03)

\$650,000



**Stephen Westfall**  
*Song*, 2021  
oil and alkyd on canvas  
72 x 24 inches  
(SW 21.16)

\$28,000



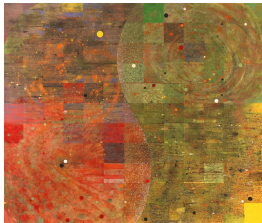
**Joan Snyder**  
*Bluescape*, 2004  
mixed media on panel  
20 x 20 inches  
(JS 126)

\$38,000



**Joan Snyder**  
*The Sun / Like the Sea*, 2002  
oil, acrylic and herbs on wood panel  
20 x 38 inches  
(JS 128)

\$38,000



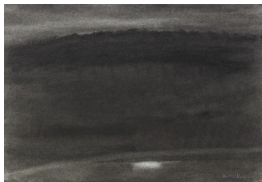
**Pat Adams**  
*Such That*, 2008  
oil, isobutyl methacrylate, shell and  
bead on linen  
77 x 91 inches  
(PA 08.03)

\$90,000



**Emily Nelligan**  
*8 OCT 08*, 2008  
charcoal on paper  
7 1/4 x 10 1/2 inches  
(EN 08.12)

\$5,900



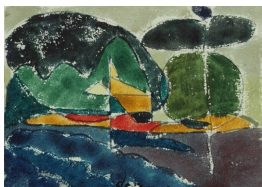
**Emily Nelligan**  
*15 JULY 10*, 2010  
charcoal on paper  
7 1/4 x 10 1/4 inches  
(EN 10.11)

\$5,900



**Emily Nelligan**  
*21 SEPT 95 (1)*, 1995  
charcoal on paper  
7 1/4 x 10 1/2 inches  
(EN 95.04)

\$5,900



**Arthur Dove**  
*Untitled #10*, 1941  
ink and watercolor on paper  
4 3/4 x 6 7/8 inches  
(AD 41.06)

\$60,000



**Arthur Dove**  
*Syosset*, 1940  
watercolor on paper  
5 x 7 inches  
(AD 40.03)

\$60,000



**Stuart Davis**  
*(Study for "Flying Carpet")*, 1942  
gouache and graphite on paper  
10 x 14 inches  
(SD 42.03)

\$225,000



**John Marin**  
*New York No. 2*, 1925  
charcoal and watercolor on paper  
25 1/4 x 20 3/4 inches  
(JM 25.01)

\$135,000



**Brett Bigbee**  
*Toward Dark*, 2023  
oil on linen  
14 1/4 x 19 5/8 inches  
(BB 23.06)

\$45,000



**Stuart Davis**  
*Egg Beater*, 1923  
oil on board  
37 x 22 inches  
(SD 23.01)

\$2,000,000



**Lois Dodd**  
*Attic Staircase and Sunlight*, 1987-88  
oil on linen  
60 x 38 inches  
(LD 709)

\$400,000  
On Reserve



**Lois Dodd**  
*Window and Ice Bank*, 1983  
oil on Masonite  
11 7/8 x 17 inches  
(LD 247)

\$44,000



**Lois Dodd**

*The Broken Door, Blaisey's Place,*  
1999

oil on Masonite  
17 3/4 x 12 inches  
(LD 99.23)

\$44,000



**Richard Estes**

*View From the Williamsburg Bridge*  
*II*, 1995

oil on canvas  
29 x 36 inches  
(RE 95.01)

\$425,000



**Gaston Lachaise**

*Single Dolphin*, 1924; cast by 1930

bronze, gold patina  
13 x 2 x 9 inches  
(GL 26.02)

\$85,000