

Art | Basel
Miami Beach

December 6-8, 2024

MAYORAL

A selection of works by:

Pablo Picasso

Joaquín Torres-García

Wifredo Lam

Salvador Dalí

Joan Miró

Antoni Tàpies

Manolo Millares

Eduardo Chillida

Eulàlia Grau

Antonio Saura

List of Works



Pablo Picasso
Visage



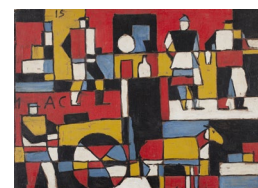
Pablo Picasso
Groupe de personnages



Pablo Picasso
Homme à la pipe assis



Joaquín Torres-García
*Forma en rojo y blanco,
ocre y negro*



Joaquín Torres-García
*Cuatro figuras y carreta
en cinco tonos*



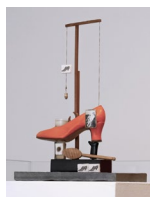
Wifredo Lam
Sin título



Salvador Dalí
*La mer de larmes. Illustration pour
"Alice au pays des merveilles"*



Salvador Dalí
*Nus dans un paysage
du Cap de Creus*



Salvador Dalí
*Objet surréaliste à
fonctionnement symbolique*



Joan Miró
*Dessin pour la couverture de
"Homenatge a Joan Prats"*



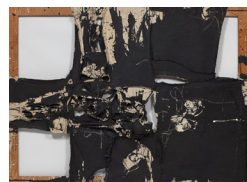
Joan Miró
*Homenaje a
Antonio Machado*



Joan Miró
Personnage, lune, oiseau



Antoni Tàpies
Taula negra



Manolo Millares
Cuadro 96



Eduardo Chillida
*Gravitación nr. 27
(Serie de Música)*



Eduardo Chillida
Lurra G-38



Eulàlia Grau
Palau (Etnografia)



Antonio Saura
Metamorfosis



Antonio Saura
Dora Maar revisada



Manolo Millares
Pez Abisal (2)

Pablo Picasso

Visage (Face), 1956

Terracotta

29 x 34 x 6 cm

(11 3/8 x 13 3/8 x 2 3/8 in.)





Pablo Picasso

Groupe de personnages (Maquette pour la "Frise des géants")
(*Group of Characters [Model for the "Giants' Frieze"]*), 1960

Charcoal on primed canvas

42.5 x 113.5 cm

(16 3/4 x 44 3/4 in.)



Pablo Picasso

Friso dels Infants (left; Carrer dels Arcs) & *Friso dels Gigants*
(centre; Plaça Nova),
Col·legi d'Arquitectes de Catalunya, Plaça Nova, Barcelona.
© Old BCN



Pablo Picasso

Groupe de personnages (Maquette pour la "Frisse des géants")
(*Group of Characters [Model for the "Giants' Frieze"]*), 1960
Charcoal on primed canvas
42.5 x 113.5 cm
(16 3/4 x 44 3/4 in.)

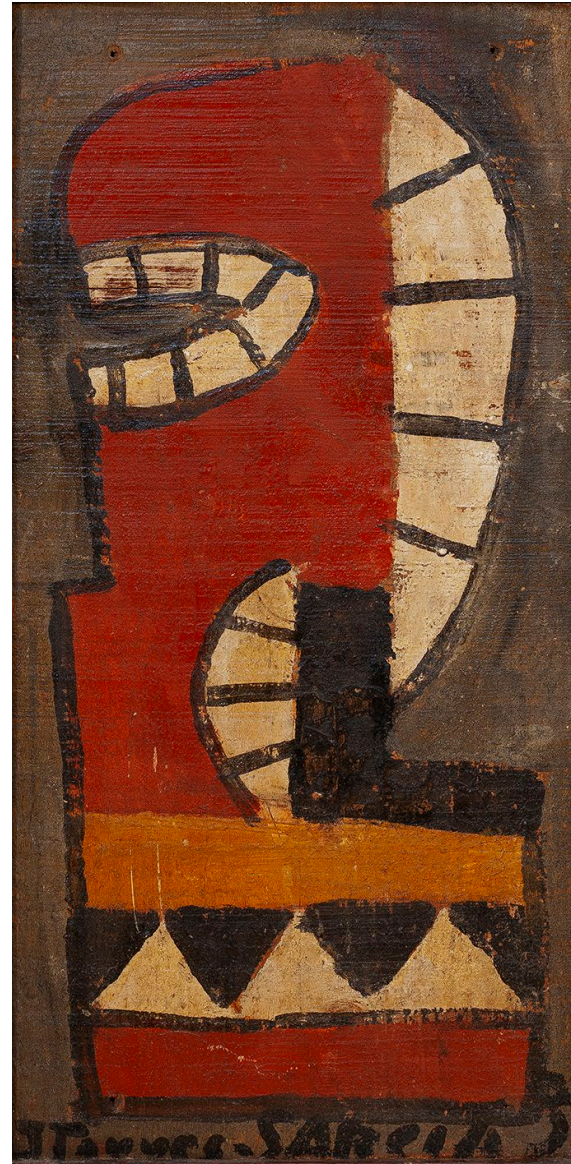
Pablo Picasso

Homme à la pipe assis
(*Seated Man with a Pipe*), 1969
Felt-tip pen on board
28 x 21 cm
(11 x 8 1/4 in.)



Joaquín Torres-García

Forma en rojo y blanco, ocre y negro
(*Form in Red and White, Ochre and Black*), 1931
Oil on wood
41.5 x 21.5 cm
(16 3/8 x 8 1/2 in.)



Joaquín Torres-García

Cuatro figuras y carreta en cinco tonos
(*Four Figures and Cart in Five Shades*), 1931

Oil on cardboard mounted on panel

49 x 69 cm

(19 1/4 x 27 1/8 in.)



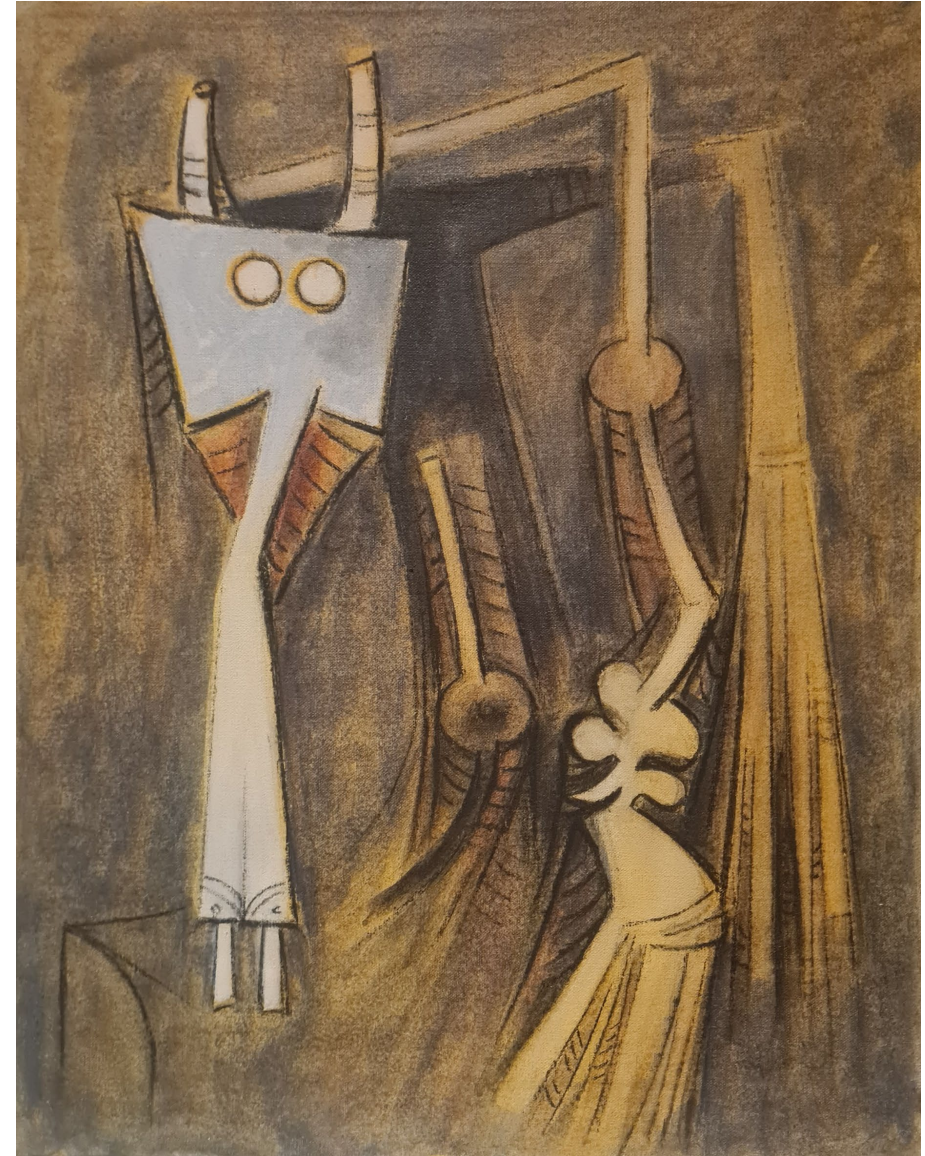
Wifredo Lam

Sin título (Untitled), 1965

Oil on canvas

50 x 40 cm

(19 3/4 x 15 3/4 in.)



Salvador Dalí

La mer de larmes. Illustration pour "Alice au pays des merveilles"
(*The Pool of Tears. Illustration for "Alice in Wonderland"*), 1968

Mixed media on Arches paper

56 x 38 cm
(22 x 15 in.)



Salvador Dalí

Nus dans un paysage du Cap de Creus
(*Nudes in a Cap de Creus Landscape*), 1965-68/70

Oil on copper

40 x 50 cm

(15 3/4 x 19 3/4 in.)





Sali 1970

Salvador Dalí

Objet surréaliste à fonctionnement symbolique, also known as *Le soulier de Gala*, and *Objet escatologique de fonctionnement symbolique (Le soulier de Gala)* (*Surrealist Object that Functions Symbolically*, also known as *Gala's Shoe*, and *Escatological Object with Symbolic Functioning [Gala's Shoe]*), 1931/73

53 x 34 x 23 cm
(28 7/8 x 13 3/8 x 9 in.)

Conceived in 1931 and reconstituted in an edition of 8 + 4 artist's proofs after the original (now lost) by the Galerie du Dragon under the direction of the artist in 1973; this work is the artist's proof reserved for Enriquer Sabater.

Assemblage with a shoe, a wooden scraper, a wooden gibbet, four white marble cubes, hair, two matchboxes, four photographs, a scatological element in porphyry, a glass containing wax, a weight, a lead counterweight, gold thread and a black base.

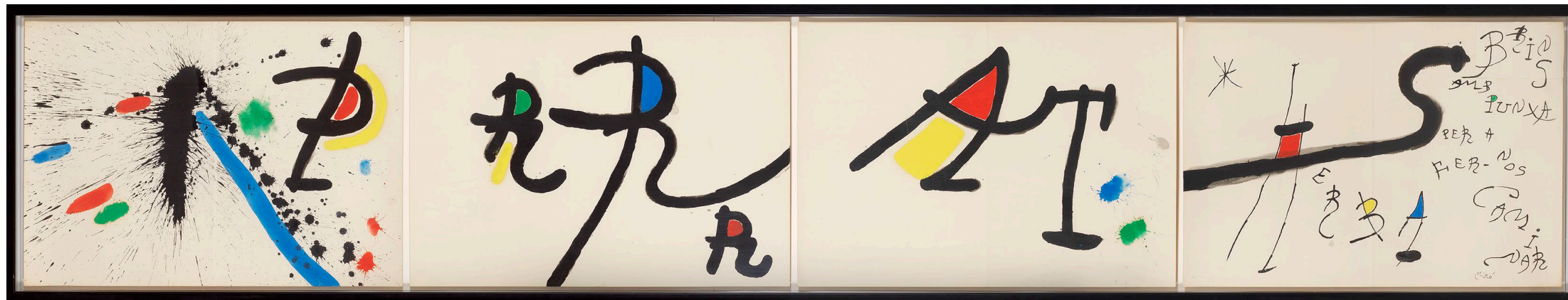




One of the copies of the work exhibited at the Centre Pompidou Málaga during the exhibition *From Miró to Barceló: A Century of Spanish Art, 2020-22.*"

"[The work is] A woman's shoe with a glass of warm milk placed inside, centered in a ductile, excrement-colored paste. The mechanism involves dipping a sugar cube, painted with the image of a shoe, into the milk to observe the dissolution of the sugar, and consequently the shoe image, in the milk. Various accessories complete the object, which is accompanied by a spare sugar jar and a special spoon used to stir lead pellets inside the shoe."





Joan Miró

Dessin pour la couverture de "Homenatge a Joan Prats"
(*Design For The Cover For "Homenatge a Joan Prats"*), 1975

Gouache on paper

37 x 217 cm (14 5/8 x 85 3/8 in.)



Joan Miró

Homenaje a Antonio Machado
(Tribute to Antonio Machado), 1965

Gouache on paper

69 x 48 cm (27 1/8 x 18 7/8 in.)



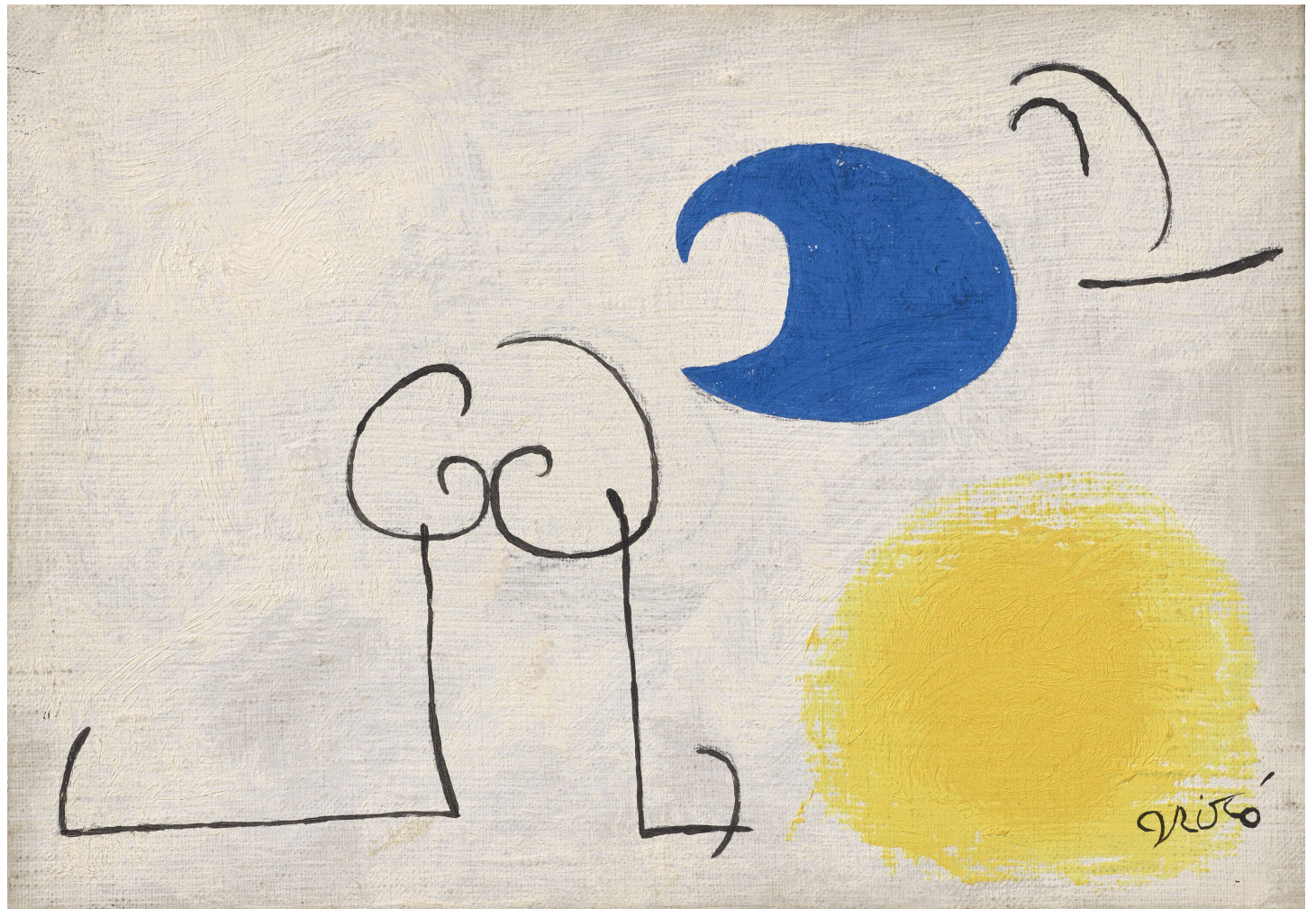
Joan Miró

Personnage, lune, oiseau
(*Figure, Moon, Bird*), 1976

Oil on canvas

24.5 x 35.1 cm

(9 5/8 x 13 7/8 in.)





Joan Miró

Mur de la Lune (Wall of the Moon), 1957

Paint on ceramic

300 x 700 cm (118 1/8 x 275 5/8 in.)

UNESCO building, Paris.

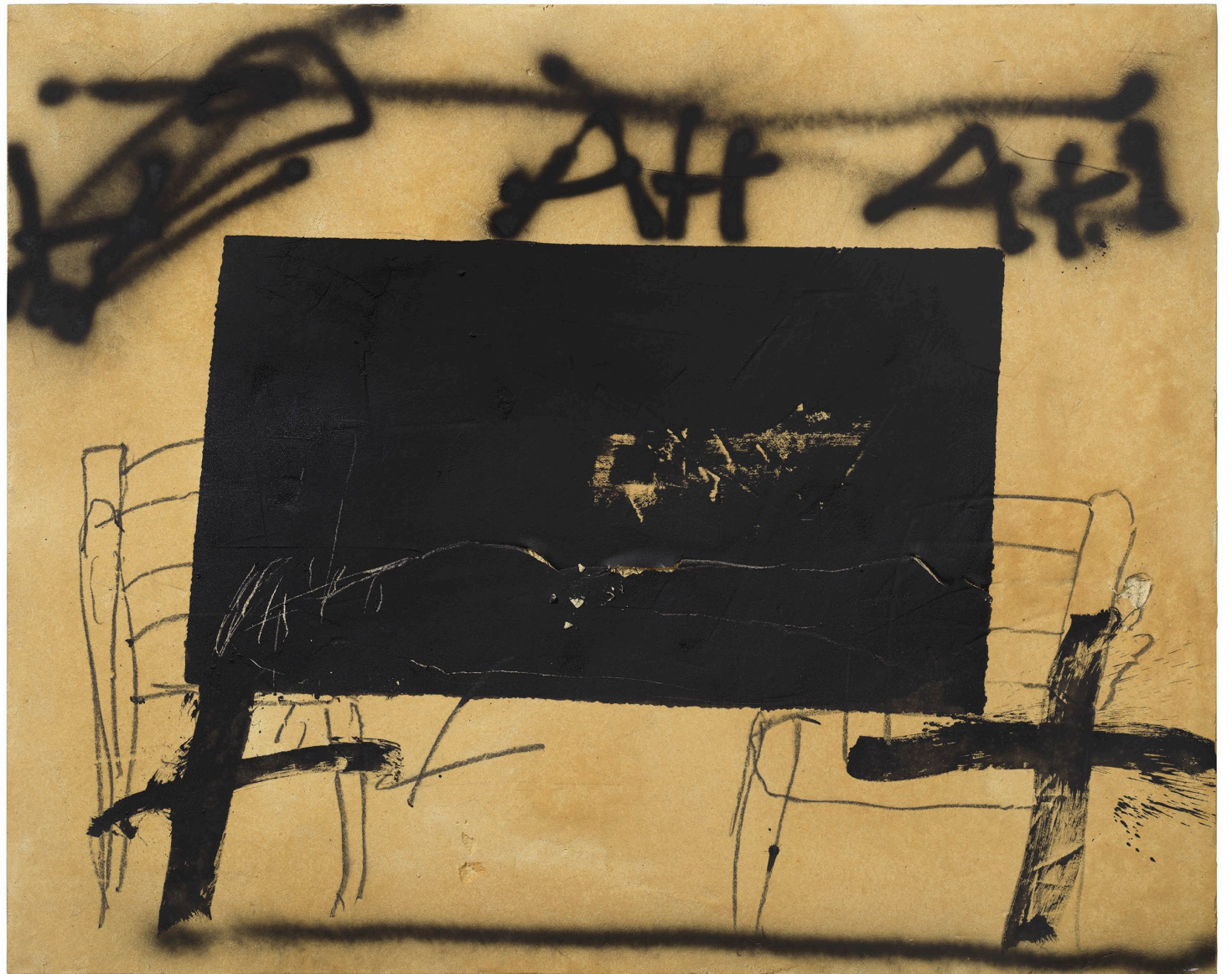
Antoni Tàpies

Taula negra (Black Table), 2005

Mixed media on wood

130 x 162 cm

(51 1/8 x 63 3/4 in.)



Manolo Millares

Cuadro 96 (Painting 96), 1960

Mixed media on burlap

149.8 x 200.6 cm

(59 x 79 in.)





Cuadro 96 exhibited during *New Spanish Painting & Sculpture* at
The Museum of Modern Art in 1960.

Image credits: MoMA Archives, New York. Photographs by George Barrows

Eduardo Chillida

Gravitación nr. 27 (Serie de Música)
(*Gravitation No. 27 [Music Serie]*), 1989

Ink, sting and Amate paper

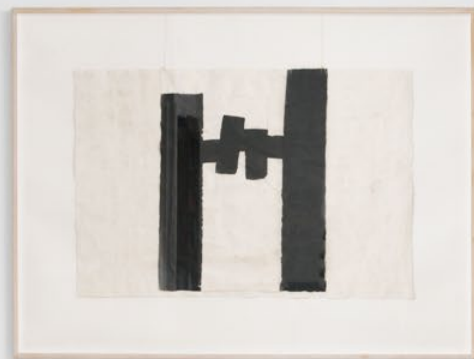
80 x 118 cm

(31 1/2 x 46 7/8 in.)



« Avec une ligne, le monde se rassemble, avec une autre ligne, le monde se divise, le dessin est à la fois beau et extraordinaire. » - Eduardo Chillida (1988)

« Ce qui compte dans une œuvre d'art n'est pas ce



OTAN
STERN
CE-OL
STERN
STERN
STERN

Eduardo Chillida

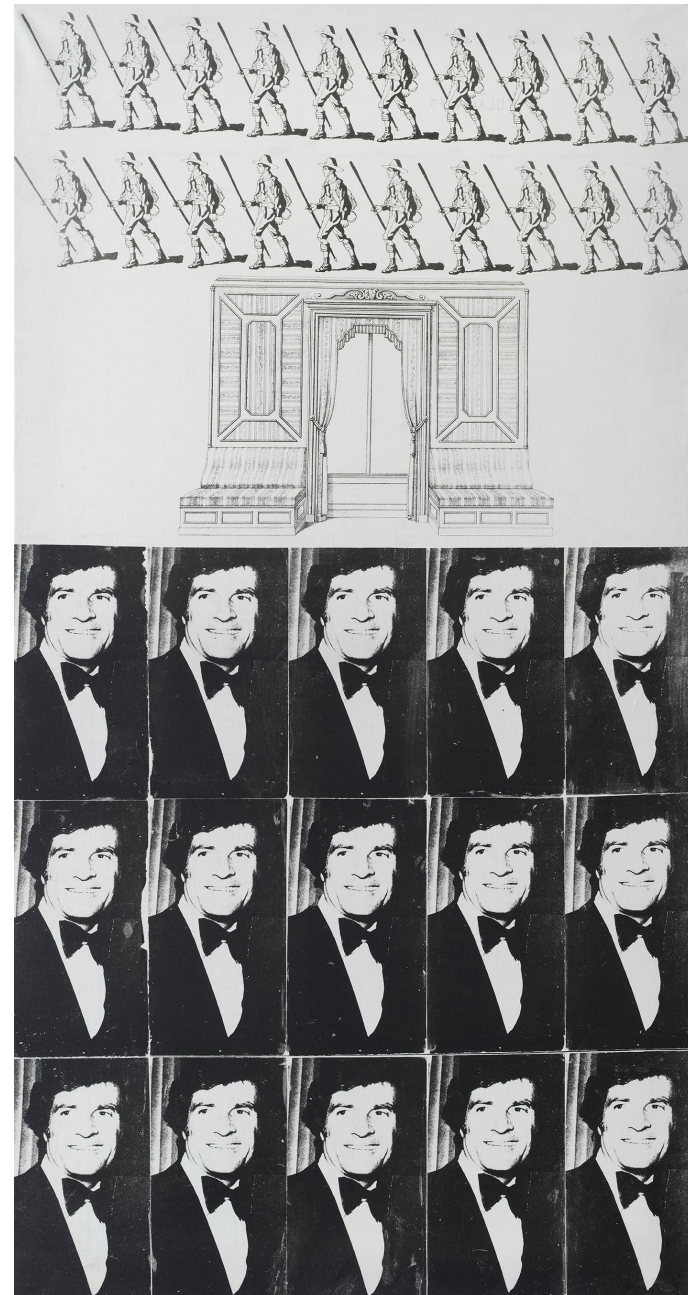
Lurra G-38 (Earth G-38), 1984

Chamotte Clay

41 x 32 x 28 cm

(16 1/4 x 12 1/2 x 11 in.)





Eulàlia Grau

Palau (Etnografia)

(Palace [Ethnography]), 1973

Photographic emulsion on canvas

120.5 x 67.5 cm (47 1/2 x 26 5/8 in.)

Antonio Saura

Metamorfosis (Metamorphosis), 1985

Oil on canvas

202 x 373.5

(79 1/2 x 147 in.)





Antonio Saura in front of *Metamorfosis* (1985) during the exhibition
Antonio Saura: Pinturas 1956-1985 at the **IVAM Centre Julio González**, 1989

Antonio Saura

Dora Maar revisada
(*Revised Dora Maar*), 1963

Oil on canvas
162 x 130 cm
(63 3/4 x 51 1/8 in.)



Manolo Millares

Pez Abisal (2)

(Abyssal Fish [2]), 1968

Mixed media on burlap

80 x 100 cm (31 1/2 x 39 3/8 in.)



MAYORAL

36 Avenue Matignon
75008 - Paris
Consell de Cent 286
08007 - Barcelona

Jordi Mayoral
+ 34 618 848 791
jordi@galeriamayoral.com
www.galeriamayoral.com