

Frieze London 2024

Olga Balema
Birke Gorm
Ernst Yohji Jaeger
Tomas Leth



3811/U, Tomas Leth

Untitled, 2024

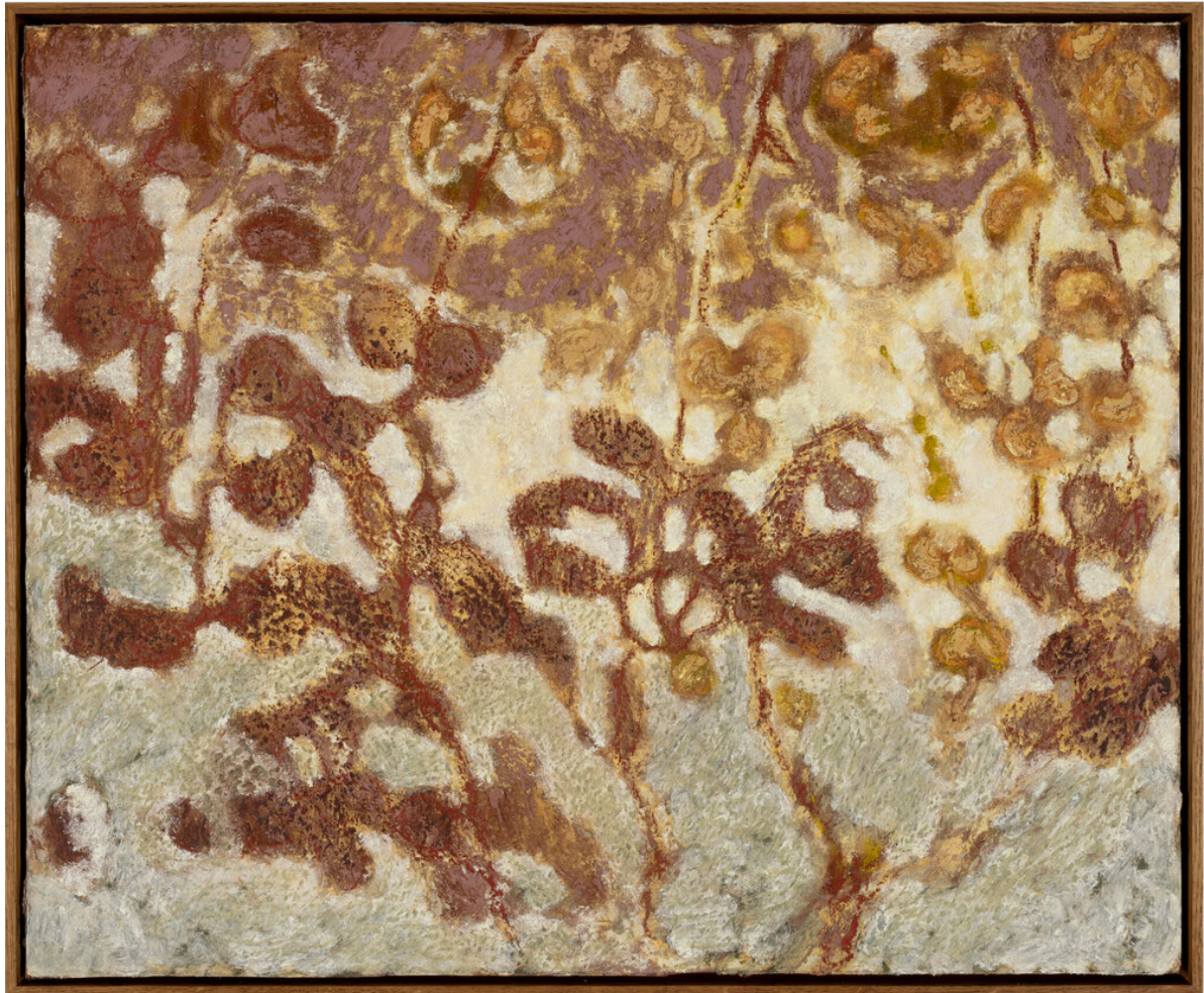
Oil and pastel on canvas

133 × 130 cm (52 3/8 × 51 1/8 inches)

17800.00 € (excl. VAT, crating and shipping)

Leth's delicate and earthy works are influenced by Impressionist painting, their interest in the passing of time and their preference for soft, radiant light landscapes. Using oil pastels, which blend into each other and create loose and soft edges, highly-abstracted natural imagery probes the conventions of vision and offers ever-shifting perspectives on the topography of our surroundings, while moving on the border of Figuration and Abstraction.





3812/U, Tomas Leth

Untitled, 2024

Oil and pastel on canvas

70 × 90 cm (27 1/2 × 35 3/8 inches)

9400.00 € (excl. VAT, crating and shipping)



3810/U, **Tomas Leth**
Untitled, 2024
Oil and pastel on canvas
133 × 130 cm (52 3/8 × 51 1/8 inches)

SOLD 17800.00 € (excl. VAT, crating and shipping)

OB 3776/U, Olga Balema*Loop 6776, 2024*

Polycarbonate, solvent

17 × 130 × 129 cm (6 3/4 × 51 1/8 × 50 3/4 inches)

15000.00 € (excl. VAT, crating and shipping)

Balema's 'Loop' series features sculptures made by bending translucent polycarbonate sheets into geometric forms. They are a bit like soap bubbles, threatening to vanish at any moment. What makes Balema's effort art and not mere probation are context and history. Her work is clearly in conversation with „heroic“, masculinist, minimalist sculpture crafted in marble, bronze or steel. The virtually see-through, plain plastic materials evolve in response to space. The feeling or parameters of a given environment, its visual and aesthetic registers, are manifested in the works themselves. Her work often deals with the floor, inducing a looking-in-motion that is reminiscent of how one explores a landscape or discovers things on the sidewalk.

Exhibition history:*Vertices (duo with Anne Talentire), Lismore Castle Arts, 2024***Literature:***Vertices, on the occasion of the duo exhibition of Olga Balema and Anne Tallentire, Ed. by Mark O'Gorman, Paul McAree, Lismore Castle Arts, Lismore, 2024*



Installation view 'Vertices' (Duo with Anne Tallentire), Lismore Castle Arts, Lismore, 2024



OB 3778/U, Olga Balema
Loop 423, 2024
Polycarbonate, solvent
123 × 13.5 × 12 cm (48 3/8 × 5 3/8 × 4 3/4 inches)
12000.00 € (excl. VAT, crating and shipping)

BG 3655/U, Birke Gorm*sit-up & composure (1)*, 2024

1 Figure, 2 aluminum stools, stickers, jute sacks, yarn, nail, sanded aluminum cans, can tabs, metal scraps

Figure (left): 225 × 47 × 15 cm (88 5/8 × 18 1/2 × 5 7/8 inches)

Stools each aprox: 22 × 40 × 20 cm (8 5/8 × 15 3/4 × 7 7/8 inches)

Cans each aprox: 15 cm ø 6 cm (5 7/8 inches ø 2 3/8 inches)

12000.00 € (excl. VAT, crating and shipping)

In Gorm's series 'sit-up & composure', anthropomorphic bodies are fashioned from rugged jute sacks with hanger hooks instead of heads—portable containers, as it were. What they “carry,” we could say, is the dialectical sign of labor, as historical image and as quasi-archeological materiality: each builds on the other to conjure a materialist history of societal toil congealed into objects. The materials that make up these bodies and their surrounding—often gleaned by the artist from industrial recycling centers, second-hand shops or the floor—invite for further speculation into their origin: what produced, exchanged, used, and eventually discarded them before they became artist's tools. Gorm conjures historical images of labor-time and bodily endurance in her sculptures, seeking to trace them as materialized figures.

Exhibition history:

Gib dein Bestes!, Museum Sønderjylland, Haderslev, 2024

Literature:

Birke Gorm – Gib Dein Bestes! Atlas II, Tønder Art Museum, Tønder, 06/2024





Birke Gorm installation view 'Gib dein Bestes!', Tønder Art Museum, 2024



Birke Gorm sit-up & composure (1), 2024 (detail)



Birke Gorm, 'sit-up & composure (1)' (detail), 2024, 1 Figure, 2 aluminum stools, stickers, jute sacks, yarn, nail, sanded aluminum cans, can tabs, metal scraps, dimensions variable

Birke Gorm, 'sit-up & composure (1)' (detail), 2024, 1 Figure, 2 aluminum stools, stickers, jute sacks, yarn, nail, sanded aluminum cans, can tabs, metal scraps, dimensions variable

**BG 3814/U, Birke Gorm**

sit-up & composure (2), 2024

1 Figure, 1 aluminum stool, stickers, jute sacks, yarn, nail,
sanded aluminum cans, can tabs, metal scraps

Figure (right): 225 × 50 × 15 cm (88 5/8 × 19 5/8 × 5 7/8
inches)

Stool approx: 22 × 40 × 20 cm (8 5/8 × 15 3/4 × 7 7/8 inches)

Cans each approx: 15 cm ø 6 cm (5 7/8 inches ø 2 3/8 inches)

11000.00 € (excl. VAT, crating and shipping)

EYJ 3804/U, Ernst Yohji Jaeger

On Suns and Stars, 2024

Distemper, gouache, oil on linen

80 × 70 cm (31 1/2 × 27 1/2 inches)

82 × 72 × 3.5 cm (32 1/4 × 28 3/8 × 1 3/8 inches) (framed)

ON HOLD 40000.00 € (excl. VAT, crating and shipping)

Influenced by various Western and Eastern traditions as well as his own Japanese-German heritage, Ernst Yohji Jaeger draws as much on the history of classical painting as on countercultural currents, video games, manga, and the anime of Yoshitaka Amano. Often depicting androgynous figures that seem caught within their own internal worlds, his works convey a powerful sense of solitude.





EYJ 3580/U, Ernst Yohji Jaeger

Nigredo, 2023

Oil on canvas

30 x 48 cm (11 3/4 x 18 7/8 inches)

25000.00 € (excl. VAT, crating and shipping)