

THE ARMORY SHOW 2024
“ASSEMBLY”
BOOTH 222

JESSICA
SILVERMAN

Jessica Silverman is pleased to announce participation in The Armory Show's 2024 edition, running from September 6 to 8 at the Javits Center in New York. The gallery will present new work from **Sadie Barnette, Julie Buffalohead, Beverly Fishman, David Huffman, Dashiell Manley, Woody De Othello, Hugh Scott-Douglas, Rupy C. Tut, Catherine Wagner, and Pae White** in "Assembly," a specially-curated booth that examines gathering as an artistic act.

Works that celebrate connection with animals, nature or imagined landscapes include **Julie Buffalohead's** large-scale oil painting *The Rescue Party*, which depicts a woman rallying with a group of animals to liberate fellow birds from a pit of snakes. Using handmade pigments, *Archipelago* by **Rupy C. Tut** conjures swirls of blue and green to observe geographic interconnectedness. Meanwhile, vibrant paintings on view by **David Huffman** will show mythic groves of dream-like, glowing trees.

Vowel Group, a golden, paper-clay tapestry by **Pae White**, assembles

anthropomorphic letter As, Os, and Us in elaborate chatter with one another, uniting to form new sounds and symbolic associations. Similarly, a series of ceramic telephones by **Woody De Othello** imbue modern communication with the sculptor's signature animism. Sculptural painting by **Beverly Fishman** conceives of the body as a composition of various parts, influenced by its surroundings and industrialized medicine.

Finally, works exploring memory and archive include **Sadie Barnette, Dashiell Manley, Hugh Scott-Douglas** and **Catherine Wagner**. Barnette will present intricate graphite drawings, texts and photographs taken over many years to explore how relational proximity multiplies meaning. New paintings by Manley and Scott-Douglas reference photographic histories and consider the dynamic exchange between the human hand and machinic processes.

Traversing mediums and various points of origin, the works in the exhibition invite viewers to engage our shared histories and imagine unified futures.



Julie Buffalohead

The Rescue Party, 2024

Oil on canvas

60 x 84 inches / 152.4 x 213.4 cm

(JBU00087PNT)

\$65,000









Julie Buffalohead

Lady Liberty, 2024

Oil on linen

46 x 84 x 3 inches / 116.8 x 213.4 x 7.6 cm

(JBU00079PNT)

\$50,000









Rupy C. Tut

Archipelago, 2024

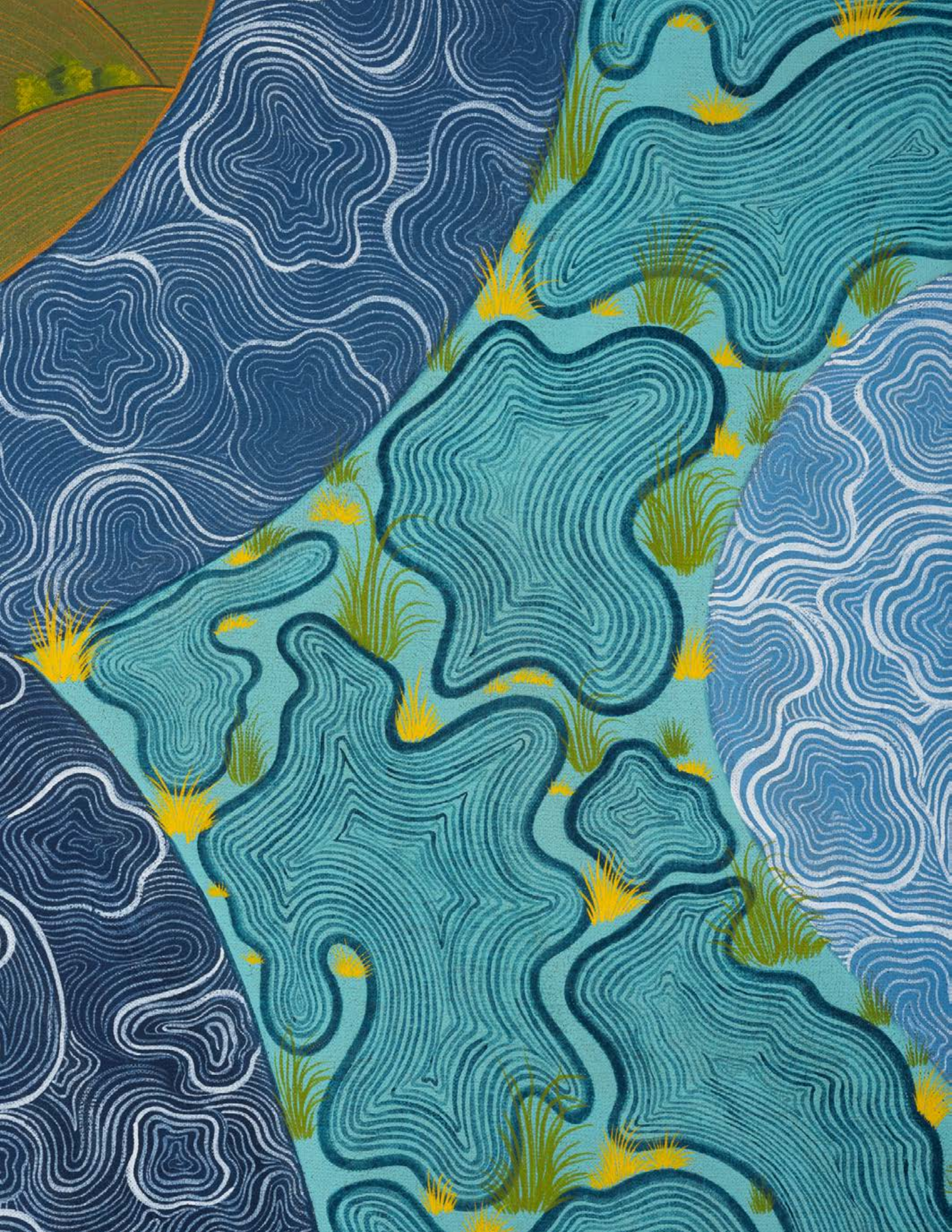
Handmade pigments on linen; Diptych

Overall: 61 1/2 x 83 x 2 1/4 inches / 156.2 x 210.8 x 5.7 cm

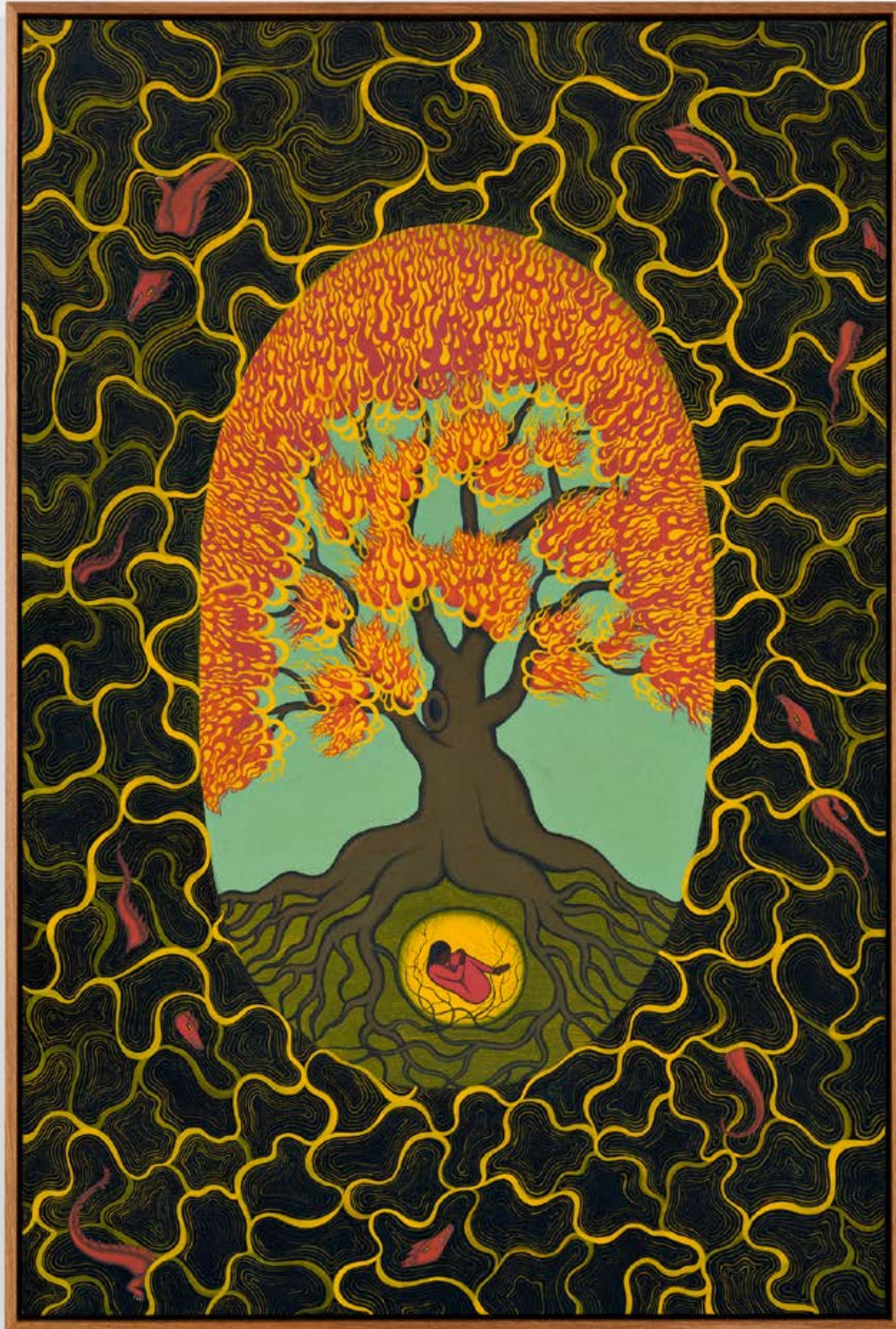
(RCT00063PNT)

\$75,000









Rupy C. Tut

I am no different, 2024

Handmade pigments on linen

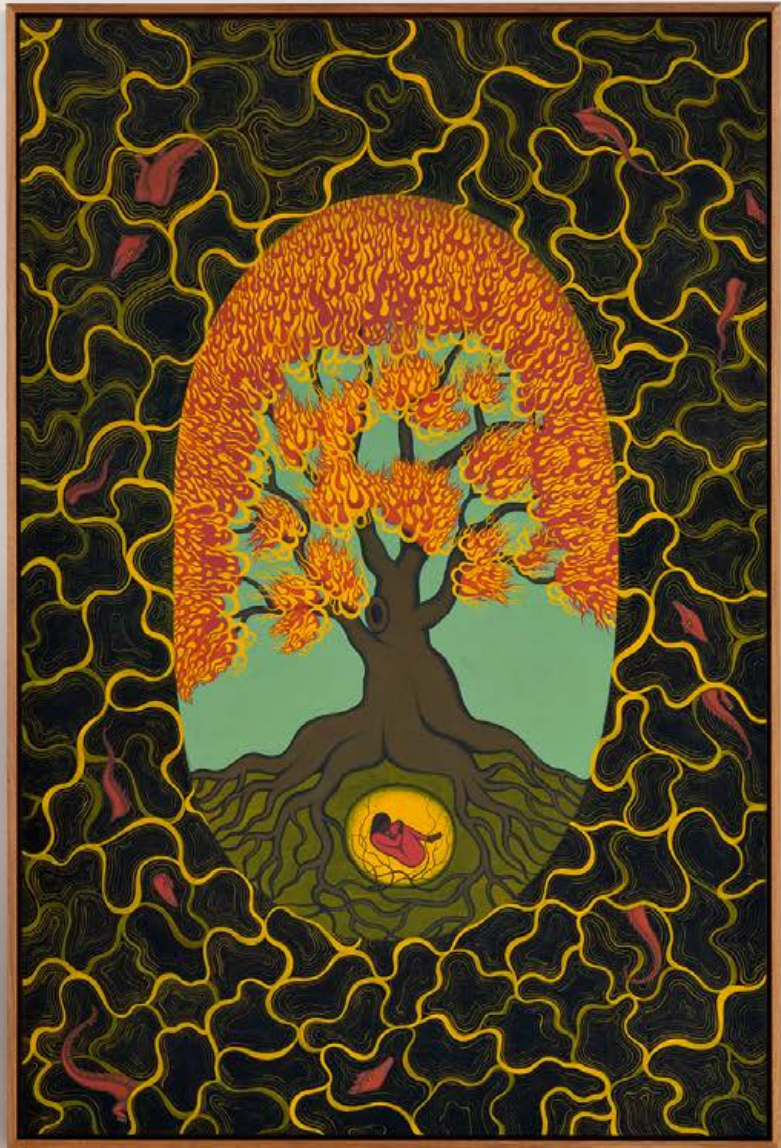
61 1/2 x 41 1/2 x 2 1/4 inches / 156.2 x 105.4 x 5.7 cm

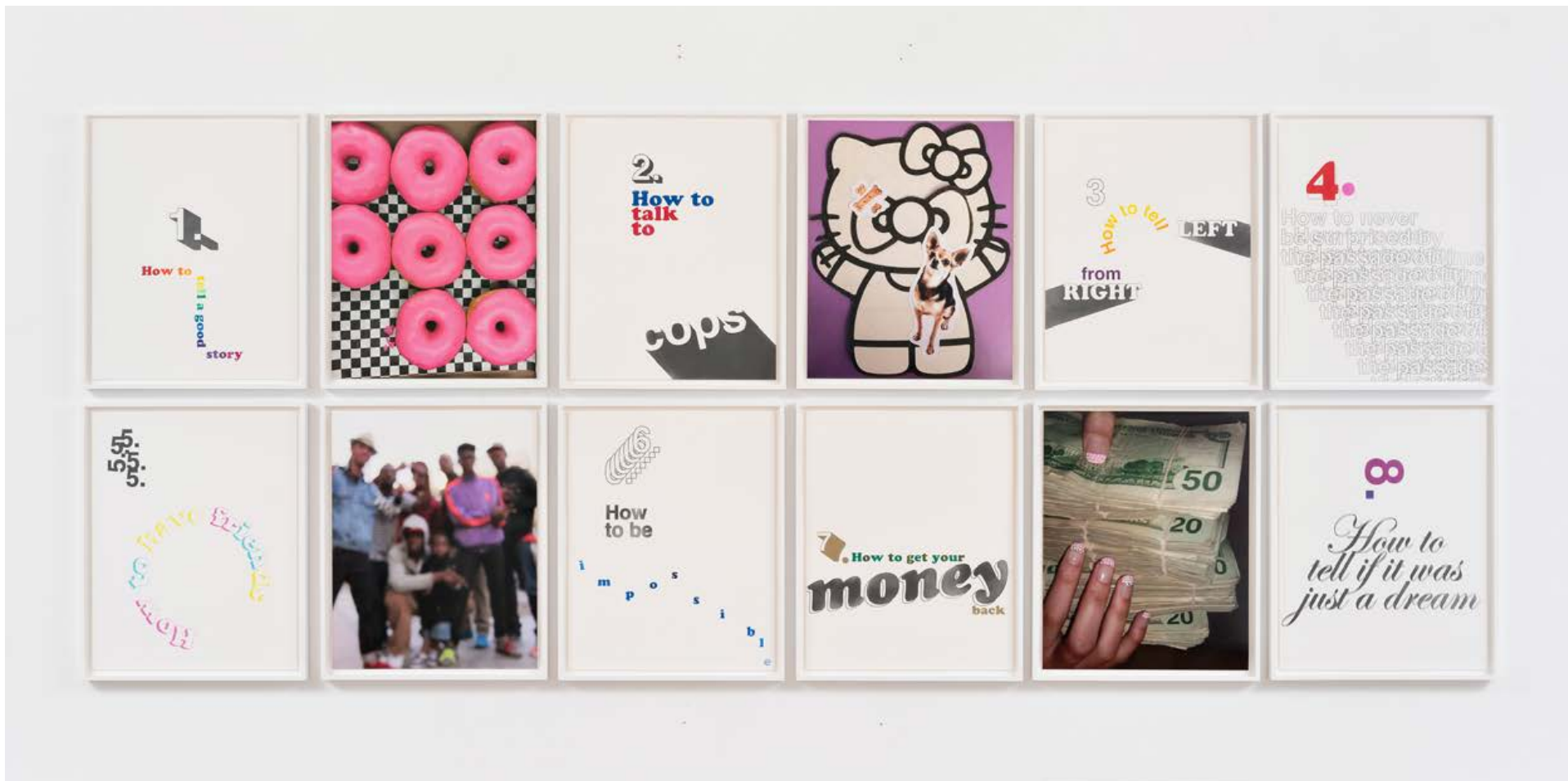
(RCT00062PNT)

\$48,000









Sadie Barnette

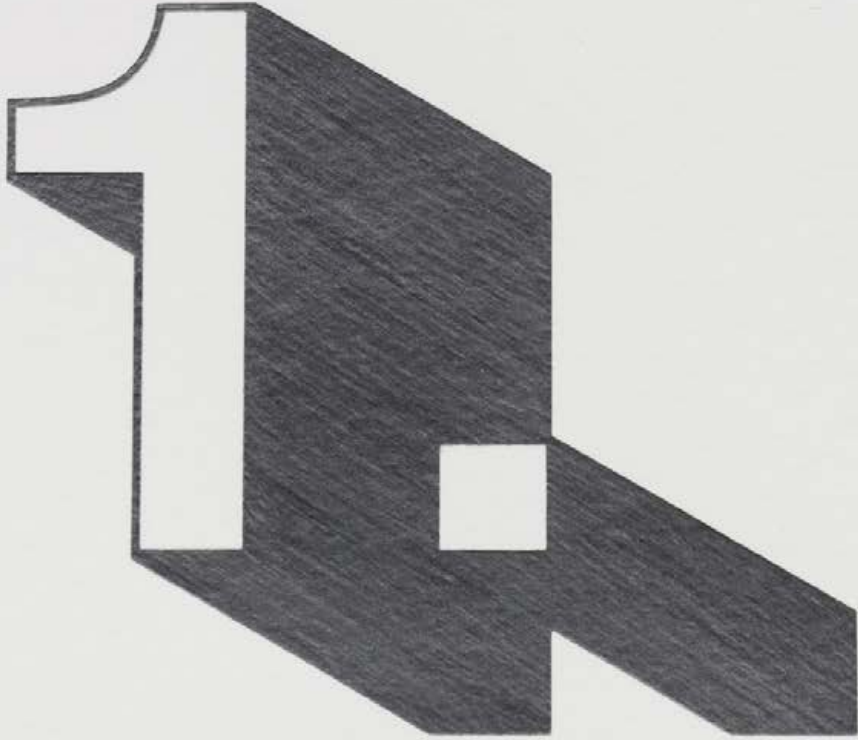
How To, Vol 2, 2024

Graphite and colored pencil on paper, collage and archival pigment prints

43 1/4 x 71 1/4 x 1 1/2 inches / 109.9 x 181 x 3.8 cm

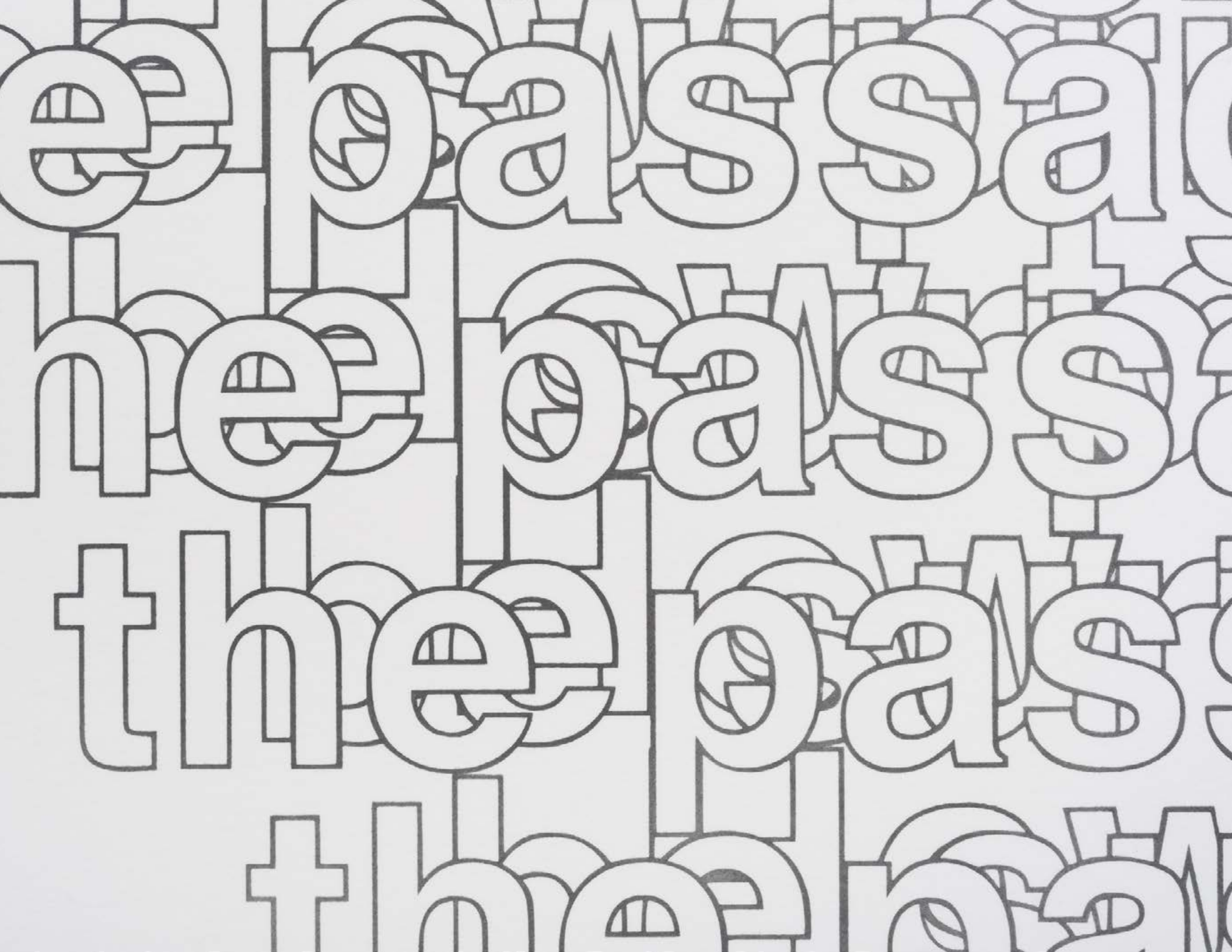
(SB00192DR)

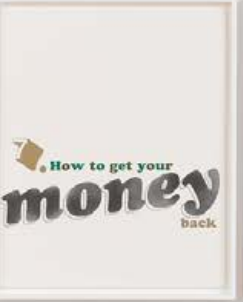
\$70,000

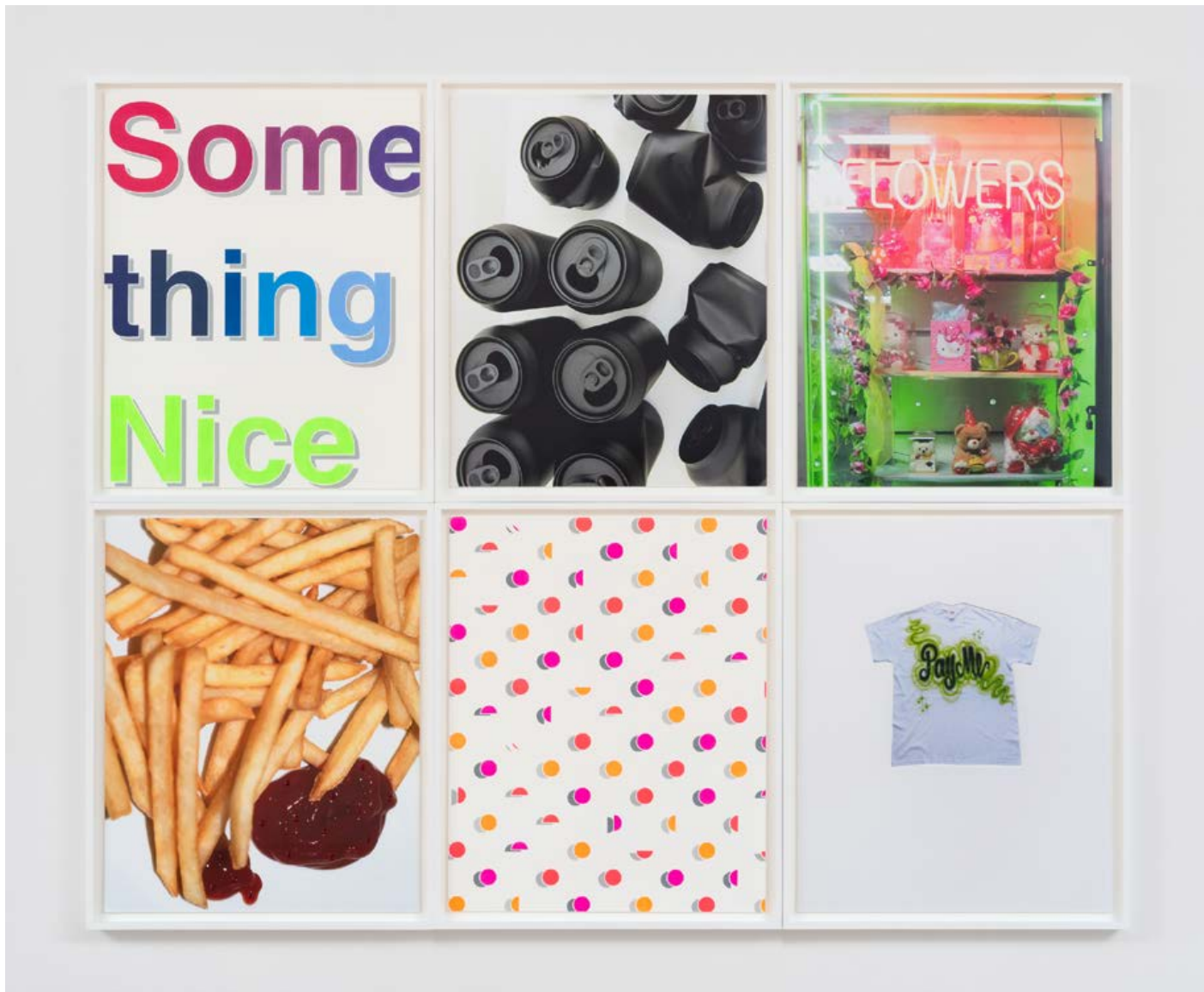


How to

tell a







Sadie Barnette

Something Nice, 2024

Colored pencil on paper, rhinestones, and archival pigment prints

42 x 51 x 1 1/2 inches / 106.68 x 129.54 x 3.8 cm

(SB00198DR)

\$50,000

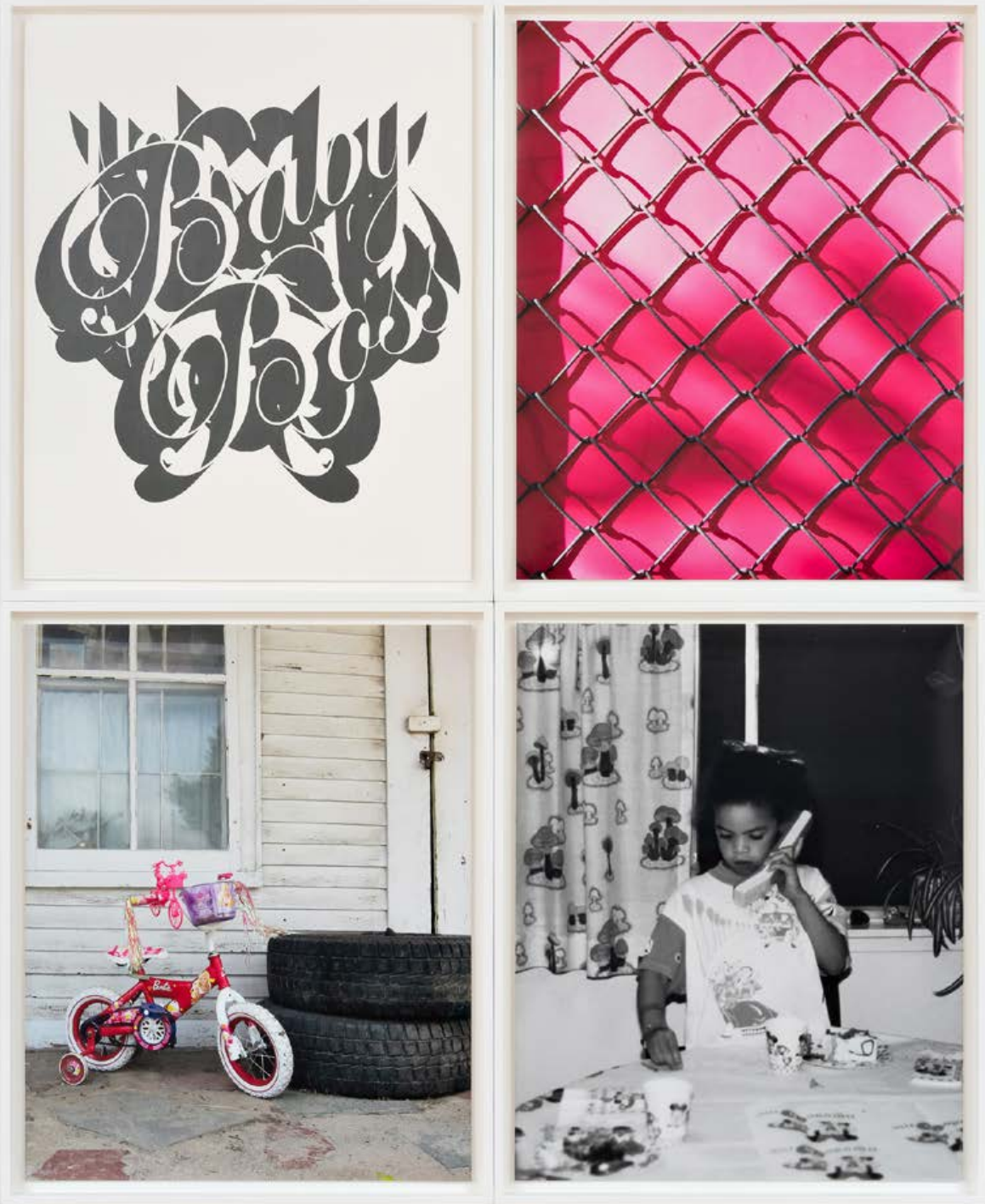






Some
thing
Nice





Sadie Barnette

Baby Boss, 2024

Graphite on paper and archival pigment prints
42 x 34 x 1 1/2 inches / 106.68 x 86.36 x 3.8 cm

(SB00194DR)

\$38,000









David Huffman

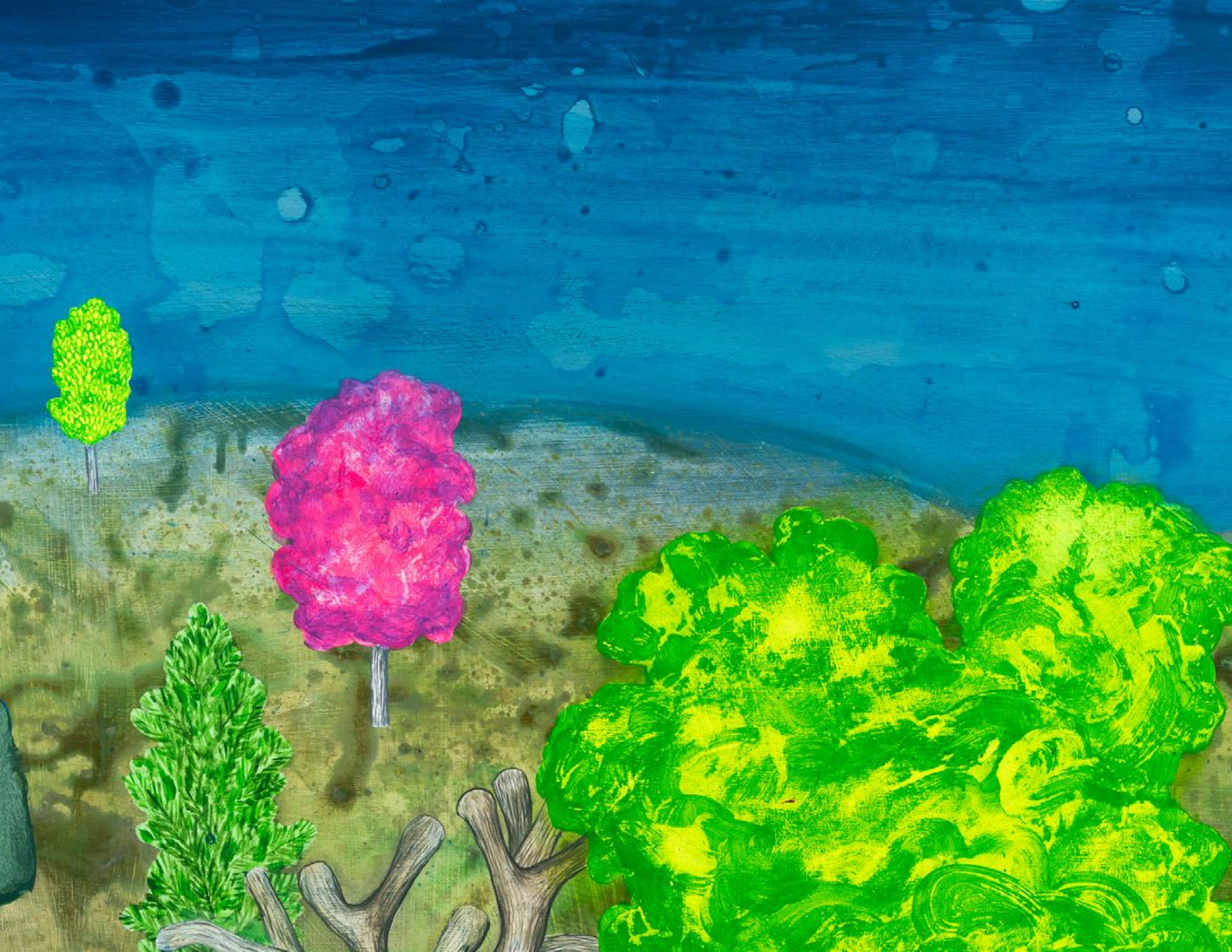
Constellation, 2024

Acrylic, gouache and mixed ground on wood panel
41 1/4 x 31 x 2 1/4 inches / 104.8 x 78.7 x 5.7 cm

(DH00110PNT)

\$30,000









David Huffman

Freedom, 2024

Acrylic, oil, spray paint, graphite, fabric and collage on wood panel
49 1/4 x 37 1/4 x 2 1/4 inches / 125.1 x 94.6 x 5.7 cm

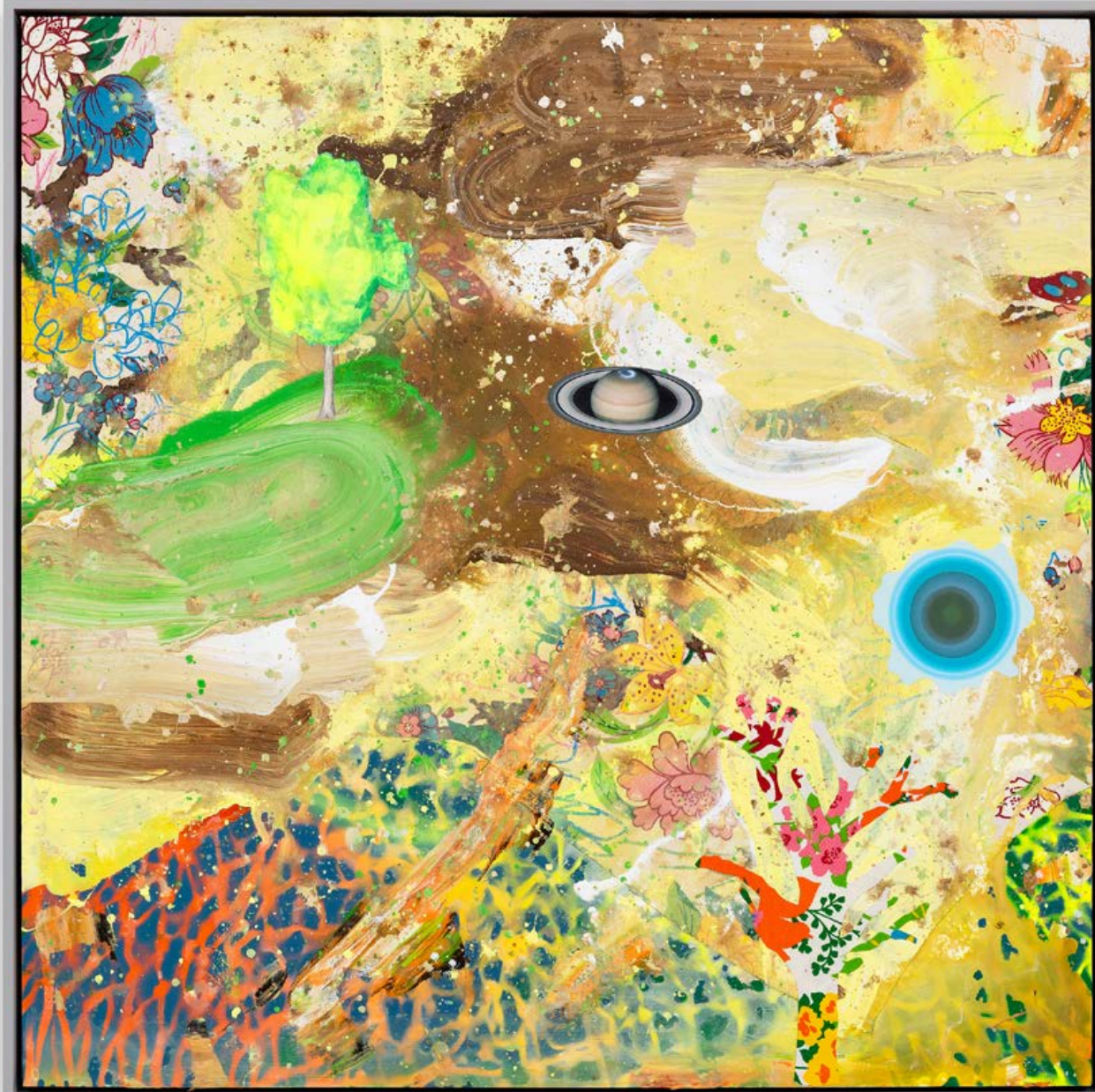
(DH00108PNT)

\$35,000









David Huffman

Cotton Fields, 2024

Acrylic, oil, spray paint, colored pencil, fabric and photo collage on wood panel

41 1/4 x 41 1/4 x 2 1/4 inches / 104.8 x 104.8 x 5.7 cm

(DH00109PNT)

\$35,000









David Huffman

Water, 2024

Basketball, plaster, acrylic and spray paint

Diameter: 9 3/8 inches / 23.9 cm

(DH00127ST)

\$7,500





David Huffman

Tree, 2024

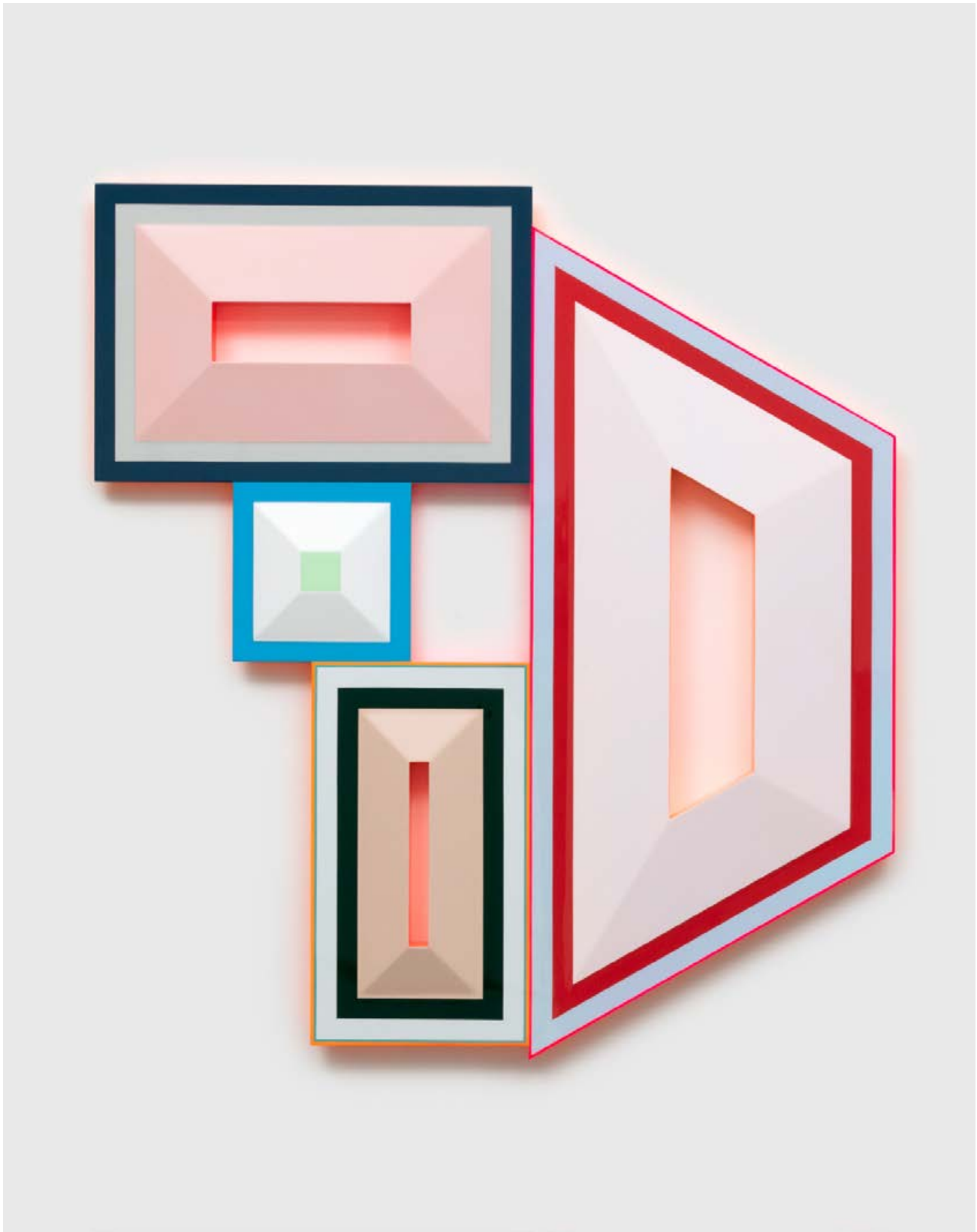
Basketball, plaster, acrylic and spray paint

Diameter: 9 3/8 inches / 23.9 cm

(DH00128ST)

\$7,500





Beverly Fishman

Polypharmacy: Parkinson's, Depression, Asthma, Diabetes, 2023

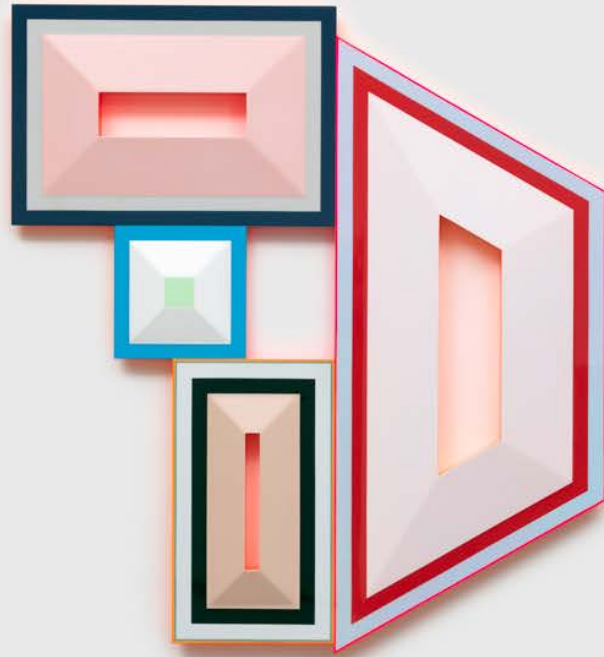
Urethane paint on wood

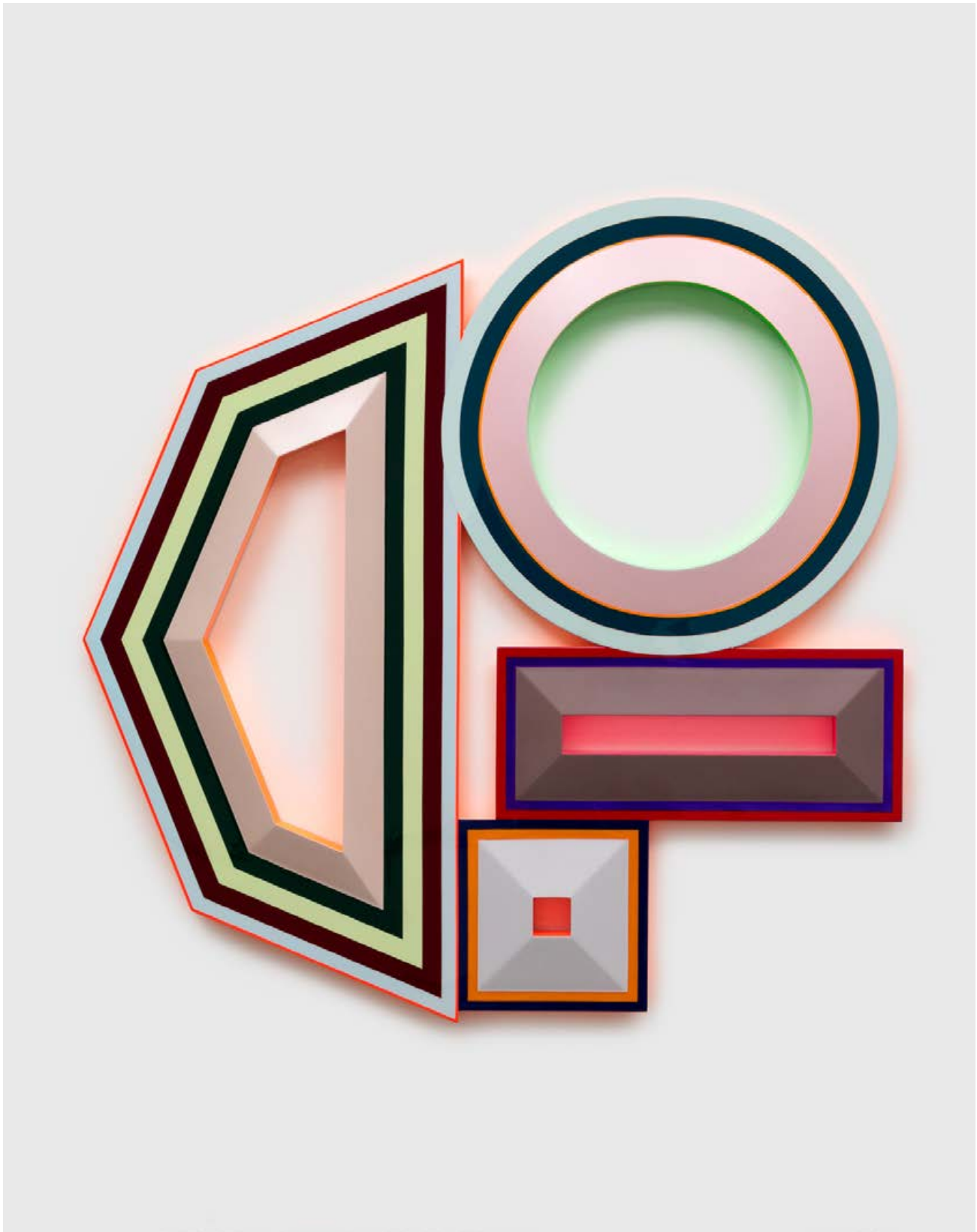
44 x 40 1/4 inches / 111.8 x 102.1 cm

(BF00020ST)

\$55,000







Beverly Fishman

Polypharmacy: Depression, Depression, Anxiety, Abortion, 2023

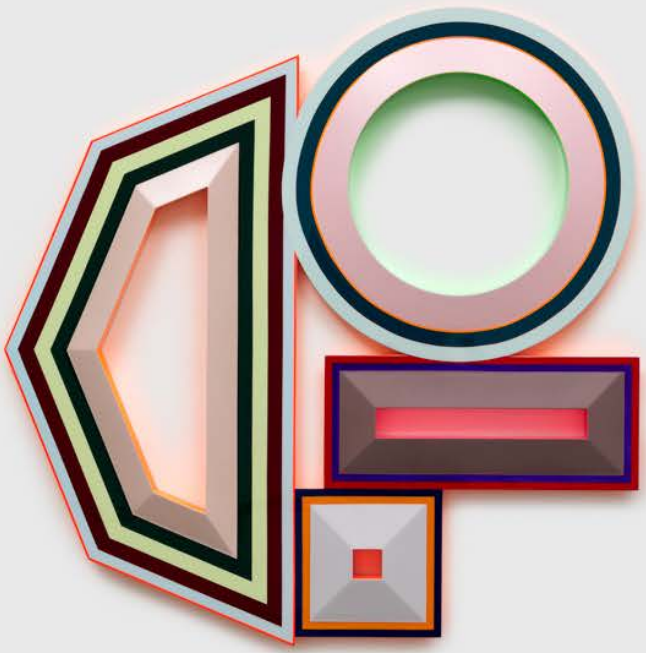
Urethane paint on wood

44 x 40 1/4 inches / 111.8 x 102.1 cm

(BF00020ST)

\$55,000







Woody De Othello

Two Sides, 2024

Glazed ceramic

21 x 12 1/2 x 5 1/2 inches / 53.3 x 31.8 x 14 cm

(WDO00622ST)

\$30,000





Woody De Othello

tied tongue, 2024

Glazed ceramic

21 1/2 x 13 1/2 x 5 inches / 54.6 x 34.3 x 12.7 cm

(WDO00621ST)

\$30,000





Woody De Othello

small shifts, 2024

Glazed ceramics, enamel paint

16 1/2 x 10 x 2 3/4 inches / 41.9 x 25.4 x 7 cm

(WDO00625ST)

\$28,000





Woody De Othello
gradual change, 2024
Glazed ceramic
18 x 13 x 2 1/2 inches / 45.7 x 33 x 6.3 cm
(WDO00624ST)
\$28,000



Woody De Othello

Autumnal Skies, 2024

Oil on canvas

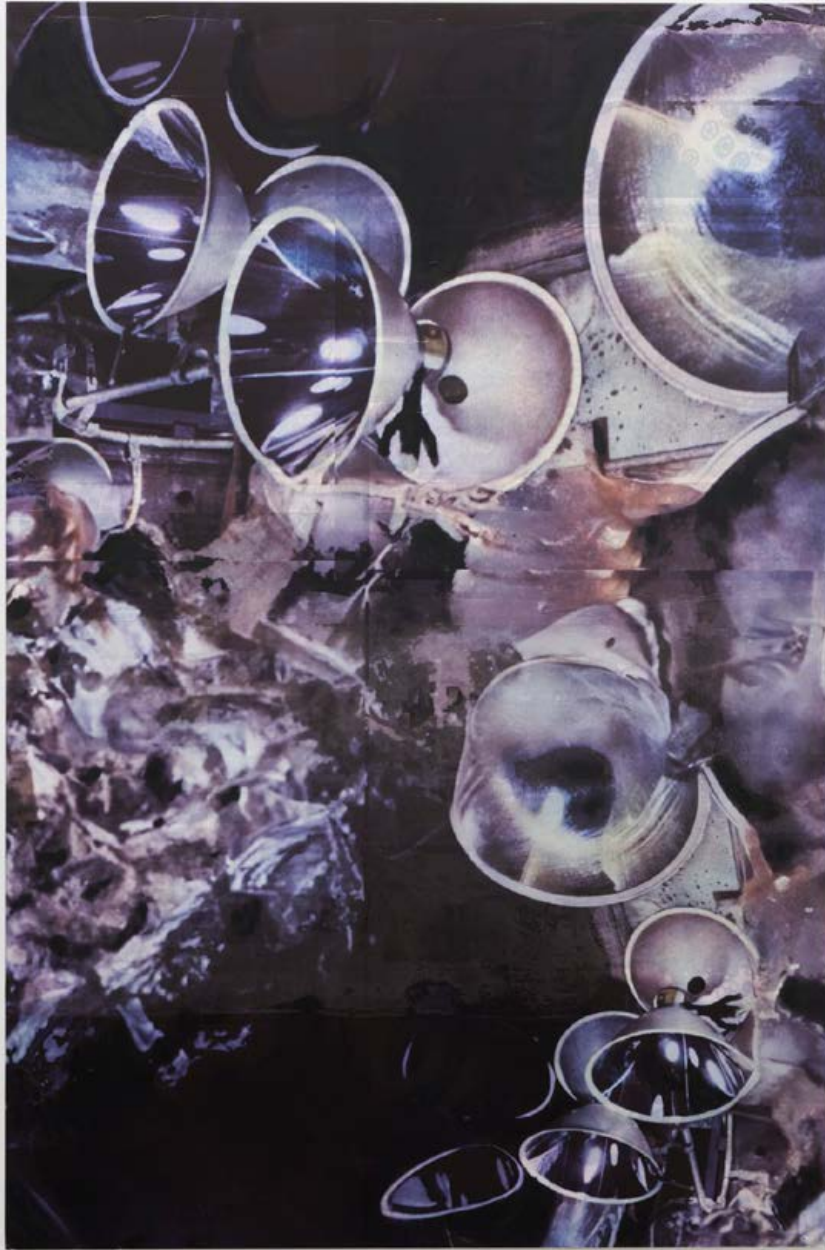
25 1/4 x 19 1/4 x 2 1/4 inches / 64.13 x 48.89 x 5.71 cm

(WDO00614PNT)

\$35,000







Hugh Scott-Douglas

æther, 2024

Watch movement parts scanned EPSON PERFECTION V7500 PRO at 1600dpi
Printed on Dibond panel at KDF REPROGRAPHIC, ROCKLIEGH NJ on OCE ARIZON 1680
Technician Mark Pilcher

Image created with Adobe photoshop Generative Imaging v.25.0.31
CNC with SHOP SABER IS-M at EJ DAVIS AESTHETICS, BETHANY, CT
Technician Erich Davis

GAC 100, fiberglass screen, gesso, titanium white acrylic paint and screentone
Print of Scan captured with EPSON PERFECTION V7500 PRO at 600dpi
Generative Image created with Adobe photoshop Generative Imaging v.25.0.31
Printed on Dibond panel at Raven Lake Studios, Warwick NY on OCE ARIZON 1680
Technician Steve Hoey

80 x 53 inches / 203.2 x 134.6 cm

(HSD00357PNT)

\$32,000







Hugh Scott-Douglas

Matters Principal, 2024

GAC 100, fiberglass screen, clear gesso, titanium white acrylic paint on Aluminum Stretcher

Print of Scan captured with EPSON PERFECTION V7500 PRO at 600dpi

Generative Image created with Adobe photoshop Generative Imaging v.25.0.31

Printed Raven Lake Studios, Warwick NY on OCE ARIZON 1680

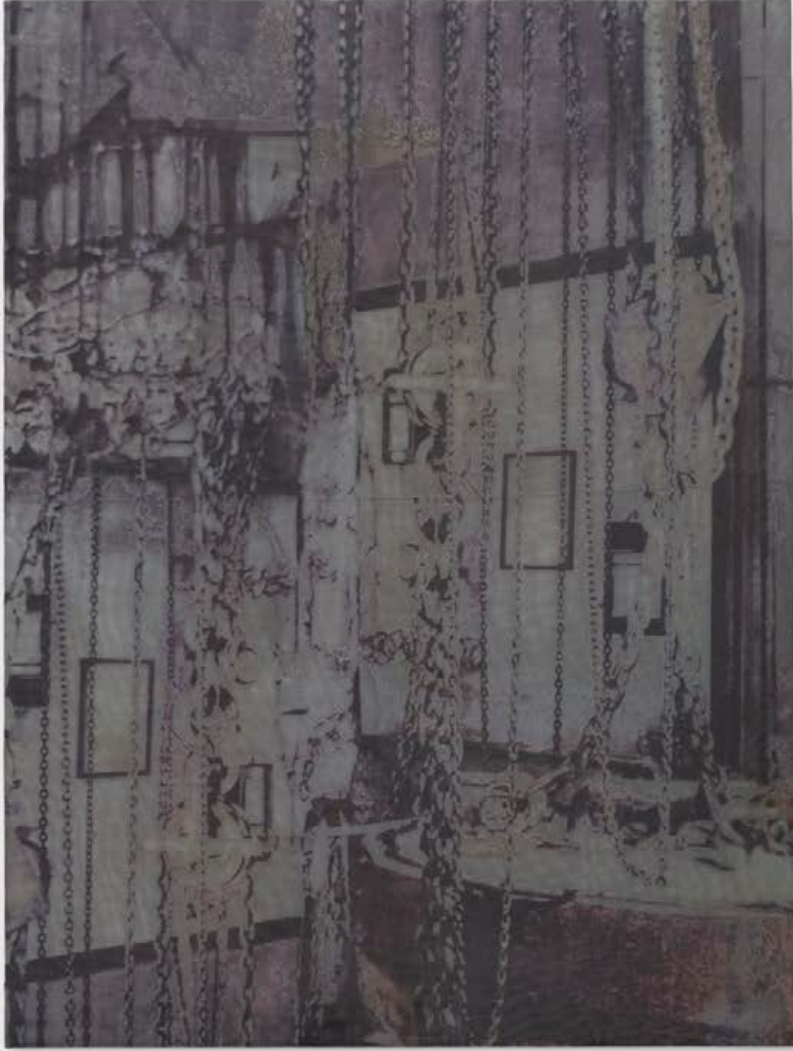
Technician Steve Hoey

53 x 40 inches / 134.6 x 101.6 cm

(HSD00356PNT)

\$18,000







Dashiell Manley

a negative view of flowers, 2024

Oil on linen

60 1/4 x 48 1/8 x 1 inches / 153 x 122.2 x 2.5 cm

(DM00874PNT)

\$38,000





Dashiell Manley

twice removed from celebration, 2024

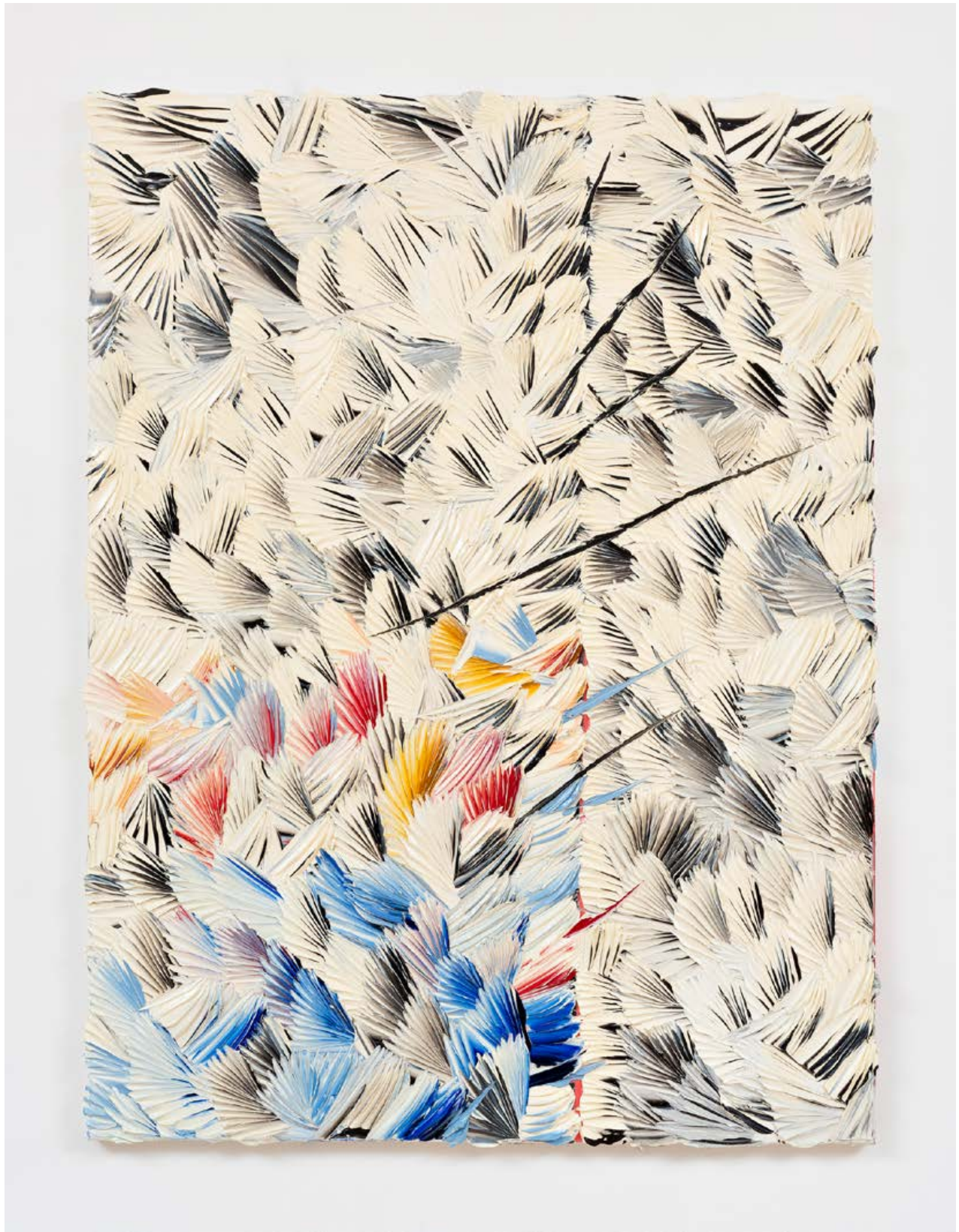
Oil on linen

60 1/4 x 48 1/4 x 1 inches / 153 x 122.6 x 2.5 cm

(DM00873PNT)

\$38,000





Dashiell Manley

a hand in, 2024

Oil on linen

48 x 36 inches / 121.9 x 91.4 cm

(DM00858PNT)

\$28,000







Pae White

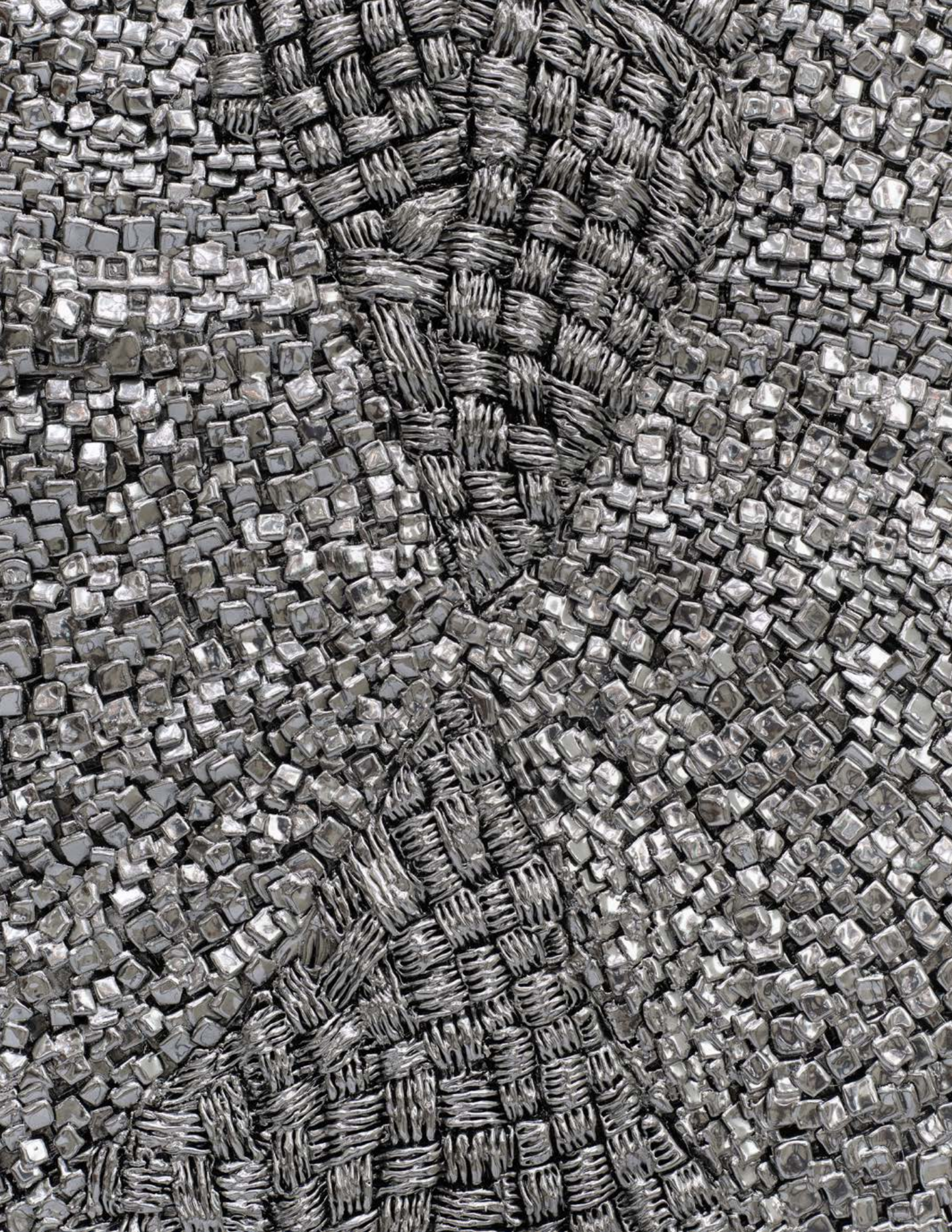
ring of bright water, 2024

Automotive paint and paperclay on wood panel

31 x 30 x 2 1/2 inches / 78.7 x 76.2 x 6.3 cm

(PAE00214ST)

\$40,000







Pae White

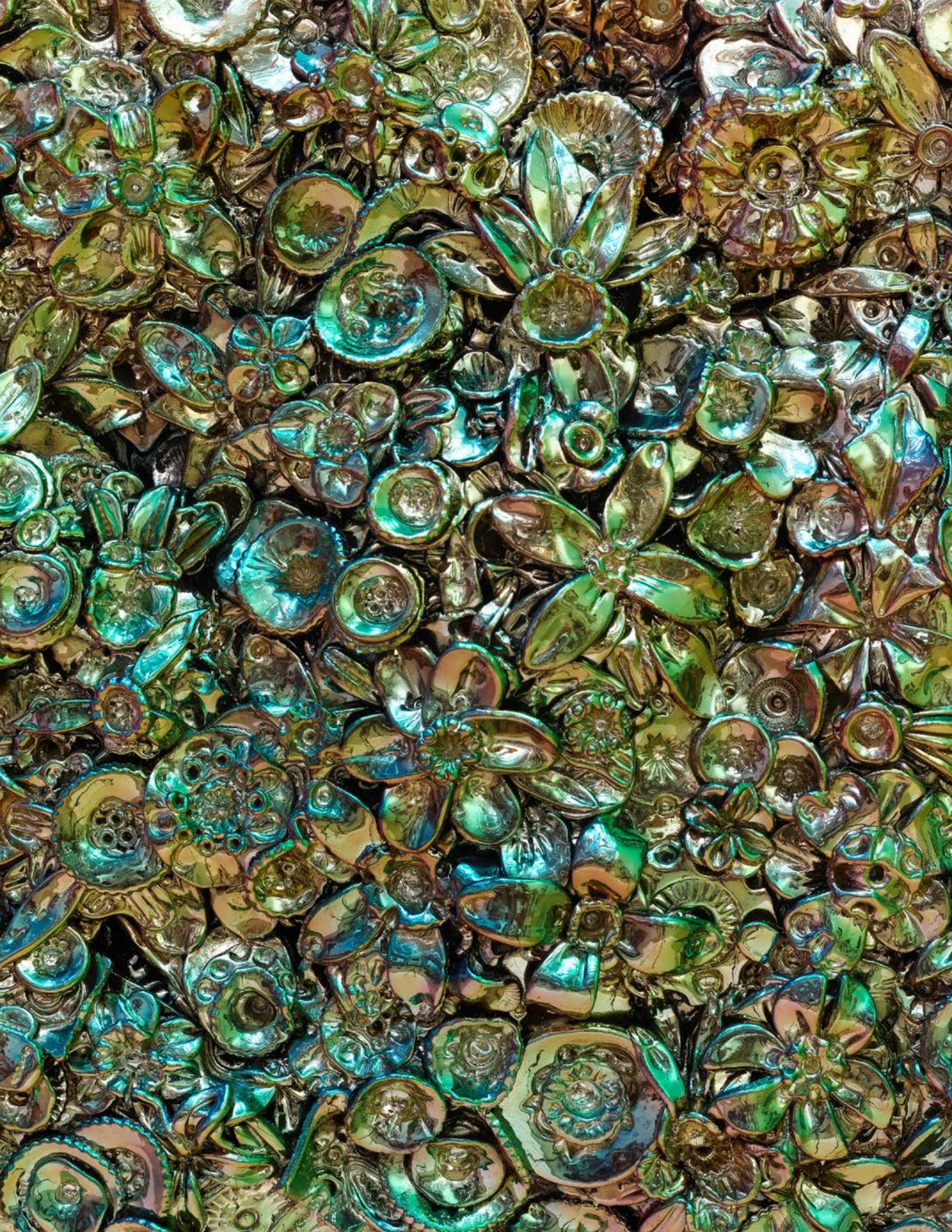
MultiDay, 2024

Automotive paint and paperclay on wood panel

19 1/2 x 19 1/2 x 4 inches / 49.5 x 49.5 x 10.2 cm

(PAE00215ST)

\$25,000







Pae White

Vowel Group, 2024

Automotive paint and paperclay on wood panel

19 x 19 x 2 inches / 48.3 x 48.3 x 5.1 cm

(PAE00217ST)

\$25,000





Pae White

cold summer, 2024

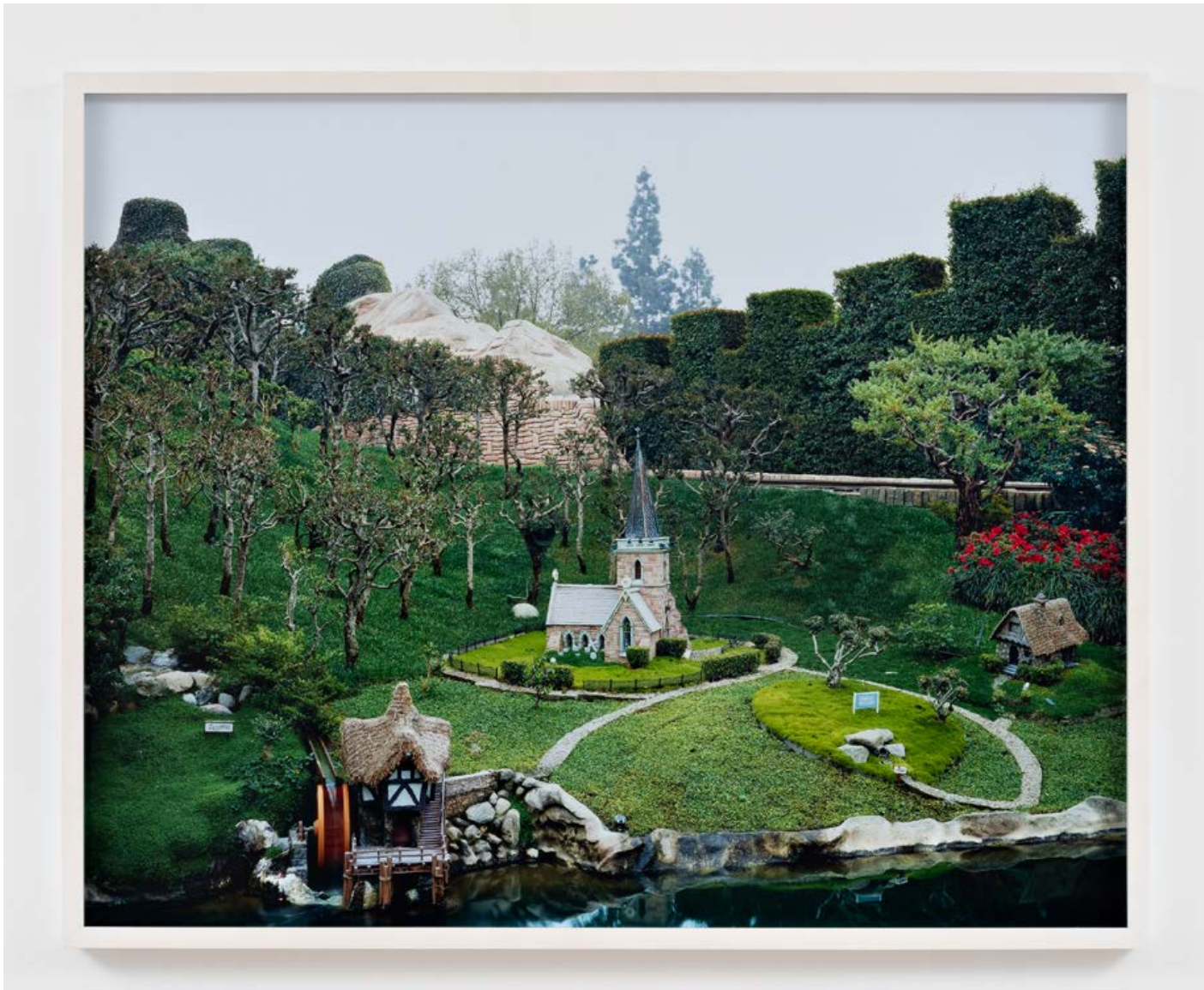
Automotive paint and paperclay on wood panel

20 x 19 1/2 x 3 1/2 inches / 50.8 x 49.5 x 8.9 cm

(PAE00218ST)

\$25,000





Catherine Wagner

Alice's Dream, 2024

Archival pigment print

41 1/2 x 51 1/4 x 2 inches / 105.4 x 130.2 x 5.1 cm

Edition of 5 plus 2 artist's proofs (#1/5)

(WGN00542PG)

\$25,000





Catherine Wagner

Gateway, 2024

Archival pigment print

41 x 51 x 2 inches / 104.14 x 129.54 x 5.08 cm

Edition of 3 (#1/3)

(WGN00332PG)

\$25,000

Upcoming Exhibitions and Fairs

Exhibitions

Beverly Fishman
September 13–November 2, 2024

Nicole Wermers
September 13–November 2, 2024

Atsushi Kaga
November 7–December 21, 2024

Emma Cousin
November 7–December 21, 2024

Davina Semo
January 9–February 22, 2025

Julie Buffalohead
January 9–February 22, 2025

Art Fairs

Frieze Seoul
September 4–7, 2024

Frieze Sculpture, London
September 18–October 24, 2024

Art Basel Paris
October 18–20, 2024

Art Basel Miami Beach
December 6–8, 2024