

STEPHEN ONGPIN FINE ART

Dealers and Agents in 15th to 20th Century Master Drawings

Frieze Masters 2024
Stand C09

Abraham Bloemaert

Gorinchem c.1565-1651 Utrecht

*A Sheet of Animal Studies: An Eagle,
a Stork, a Goat and a Donkey*

Pen and brown ink and brown wash,
over an underdrawing in black chalk.

177 x 144 mm. (7 x 5 5/8 in.)





Giovanni Boldini

Ferrara 1842-1931 Paris

Portrait of a Man Seated in a Church

Watercolour.

Stamped with the *vente* stamp *Boldini* at the lower left.

449 x 450 mm. (17 5/8 x 17 3/4 in.)

Giovanni Boldini

Ferrara 1842-1931 Paris

The Interior of the Cathedral of Amiens

Watercolour.

A study of horses and a carriage(?) in front
of a church(?) drawn in black chalk on the
verso.

354 x 254 mm.

(13 7/8 x 10 in.)



David Bomberg

Birmingham 1890-1957 London

Middle Temple

Charcoal on light brown paper.

475 x 622 mm.

(18 3/4 x 24 1/2 in.)



Claudio Bravo

Valparaiso 1936-2011 Taroudant

Mystic Package

Chalk, conte crayon and pastel.

Signed *CLAUDIO BRAVO* at the lower left and dated *MCMLXVII* at the lower right.

750 x 1100 mm. (29 1/2 x 43 1/4 in.)



Paul Cézanne

Aix-en-Provence 1839-1906 Aix-en-Provence

Landscape with the Montagne Saint-Victoire

Watercolour and pencil on white wove paper.

325 x 499 mm. (12 3/4 x 19 5/8 in.)





Paul Cézanne

Aix-en-Provence 1839-1906 Aix-en-Provence

Femme à la mante

Watercolour and pencil on white wove paper.

Inscribed *La Mante* on the verso.

477 x 315 mm.

(18 3/4 x 12 3/8 in.)

Anthony Christian

Born 1945

Blue Plant Study

Pencil and white chalk on
Arches paper washed blue.

1050 x 750 mm.

(41 3/8 x 29 1/2 in.)





Howard Chandler Christy

Meigs Creek 1873-1952 New York

An Elegant Woman in a Fur-Trimmed Coat

Charcoal, pastel and watercolour.

Signed and dated *HOWARD CHANDLER CHRISTY. 1902* at the lower right.

894 x 445 mm. (35 1/4 x 17 1/2 in.)

Peter De Wint OWS

Hanley 1784-1849 London

Horses and Figures on a Riverside Path

Watercolour over traces of an underdrawing in pencil, with scratching out, on oatmeal paper.

308 x 469 mm. (12 1/8 x 18 1/2 in.)



Edgar Degas

Paris 1834-1917 Paris

A Jockey Seen from Behind (*Étude de jockey, vu de dos*)

Pencil.

Stamped with the Degas atelier stamp on the former backing sheet.

320 x 235 mm. (12 5/8 x 9 1/4 in.)



Beauford Delaney

Knoxville 1901-1979 Paris

Untitled, 1961

Watercolour and gouache on paper.

Signed and dated *Beauford Delaney 61 /
San Telmo Mallorca* at the lower right.

657 x 500 mm. (25 7/8 x 19 5/8 in.)





Lynne Drexler

Newport News 1928-1999
Monhegan Island

Washerwoman

Gouache on board.

Signed, inscribed, titled and dated *TOP / LYNNE DREXLER / Washer woman 1962* on the verso.

328 x 410 mm. (12 7/8 x 16 1/8 in.)

Lynne Drexler

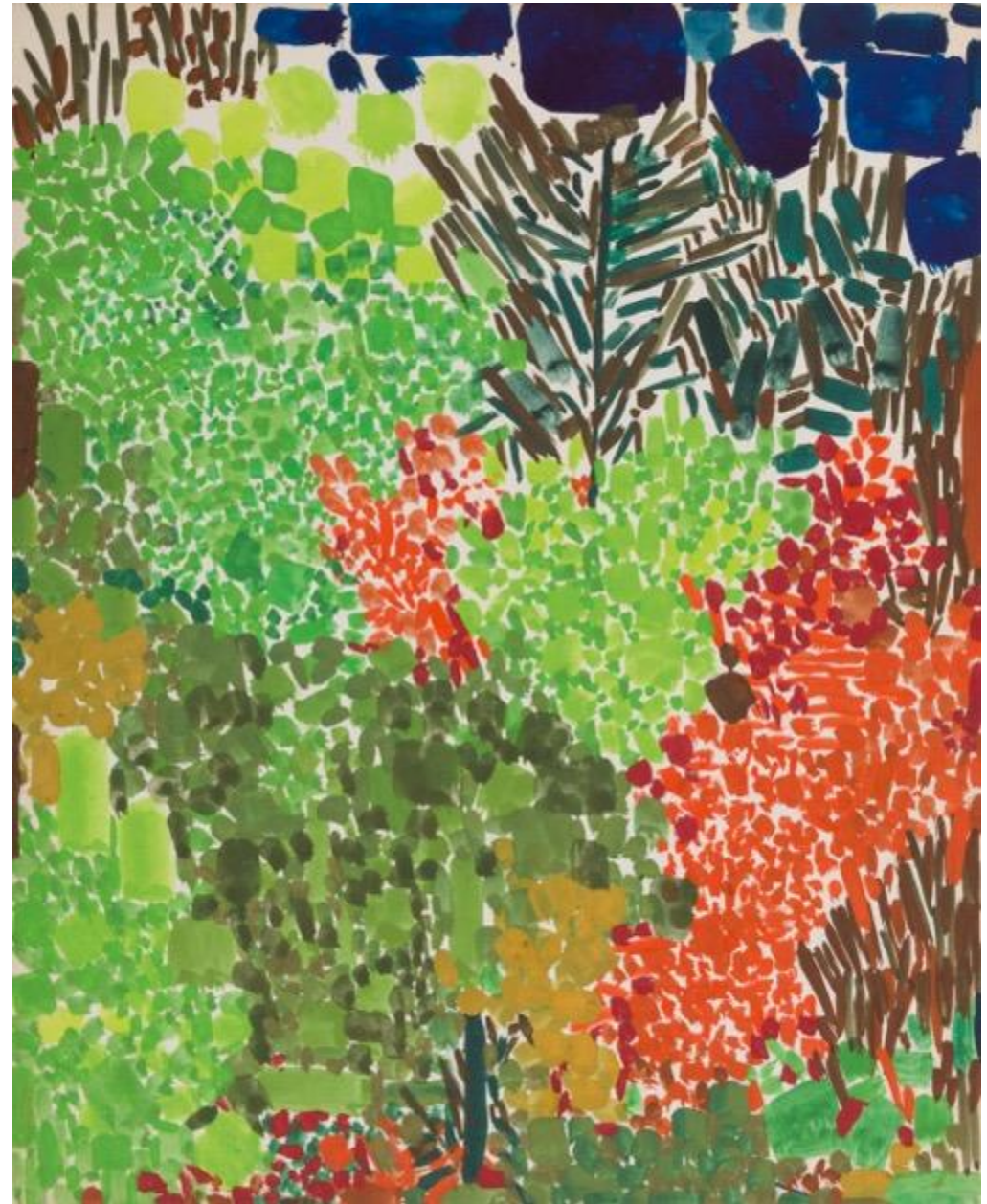
Newport News 1928-1999 Monhegan
Island

Foliage Study

Gouache on board.

Signed, titled and dated *Foliage Study* /
LYNNE DREXLER 1962 on the verso.

412 x 328 mm. (16 1/4 x 12 7/8 in.)



Brigid Edwards

Born 1940

Red Hot Pokers

Watercolour, over an underdrawing in pencil, on vellum.

534 x 405 mm. (21 x 17 3/4 in.)





Brigid Edwards

Born 1940

Heliconia, Tjampuhan, Ubud

Watercolour, over an underdrawing
in pencil, on vellum.

762 x 608 mm. (30 x 23 7/8 in.)

Florentine or Emilian School

16th Century

Four Studies of the Heads of Horses

Pen and brown ink, extensively heightened with white.

A large made-up section at the upper centre
229 x 347 mm. (9 x 13 5/8 in.)



Sam Francis

San Mateo 1923-1994 Santa
Monica

Untitled, 1956

Gouache on paper; a page
from a large sketchbook.

Signed and dated *Sam
Francis / 1956* on the verso.

360 x 514 mm. (14 1/8 x 20
1/4 in.)





**Attributed to Battista
Franco, called Il Semolei**

Venice c.1510-1561 Venice

A Dromedary

Red chalk.

210 x 298 mm. (8 1/4 x 11 3/4
in.)

Helen Frankenthaler

New York 1928-2011 Darien

Untitled, 1981

Acrylic on paper.

Signed and dated *22 July '81*
Frankenthaler at the lower right.

Signed, dated and dedicated *2 Dec '81*
/ Happy Birthday Dear Erni! / Love
Helen at the lower left.

279 x 381 mm. (11 x 15 in.)



Helen Frankenthaler

New York 1928-2011 Darien

Untitled (P94-5), 1994

Acrylic on light brown paper.

Signed *Frankenthaler* at the
lower right.

514 x 658 mm. (20 1/4 x 25 7/8
in.)



Annie French

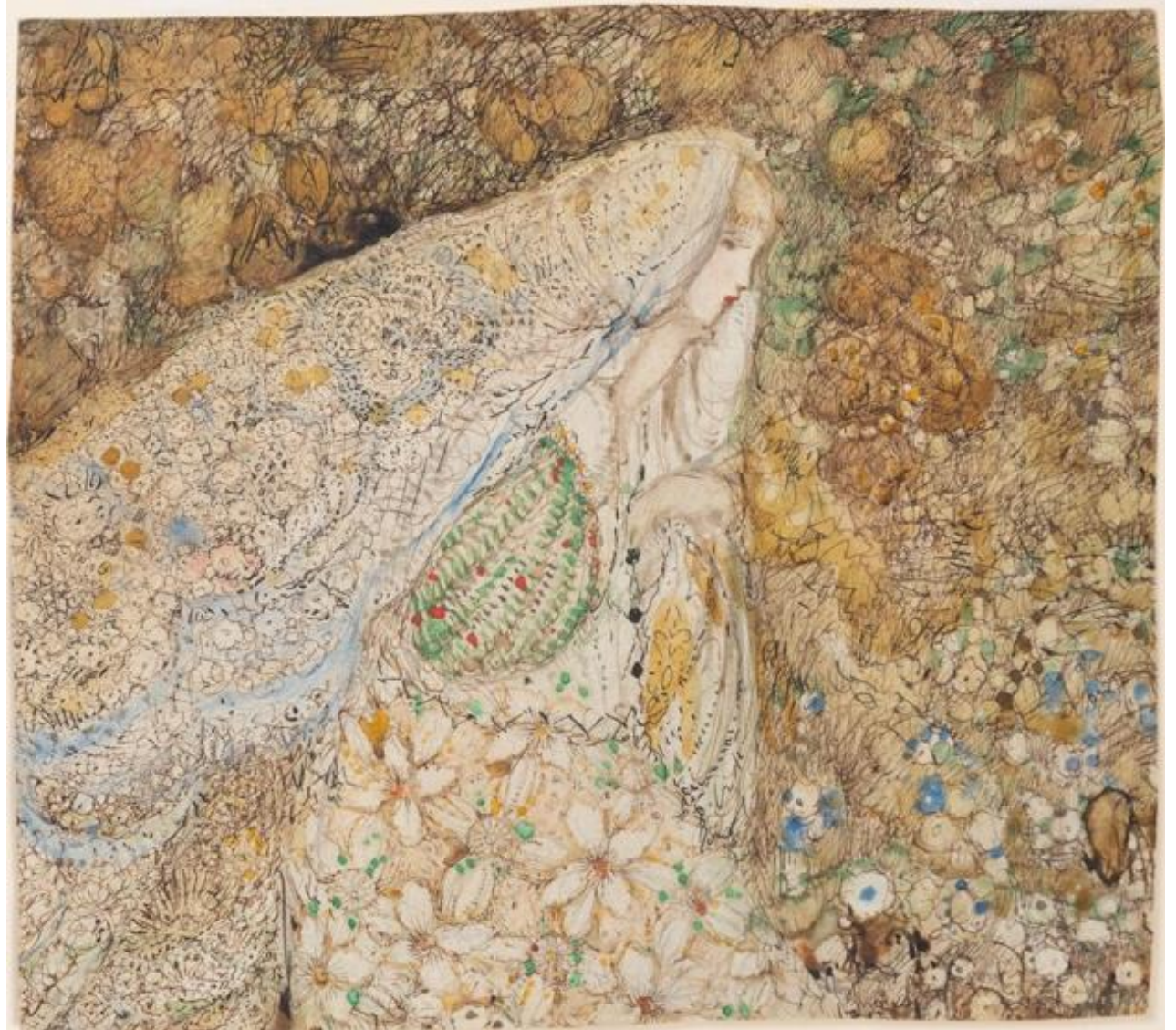
Glasgow 1872-1965 St. Helier, Jersey

A Young Girl Wearing a Shawl

Pen and brown ink and watercolour on vellum

Inscribed *To Dr. Scarborough / Drawing by Annie French / given by Eric French / 15-6-82* on the verso.

152 x 168 mm. (6 x 6 5/8 in.)



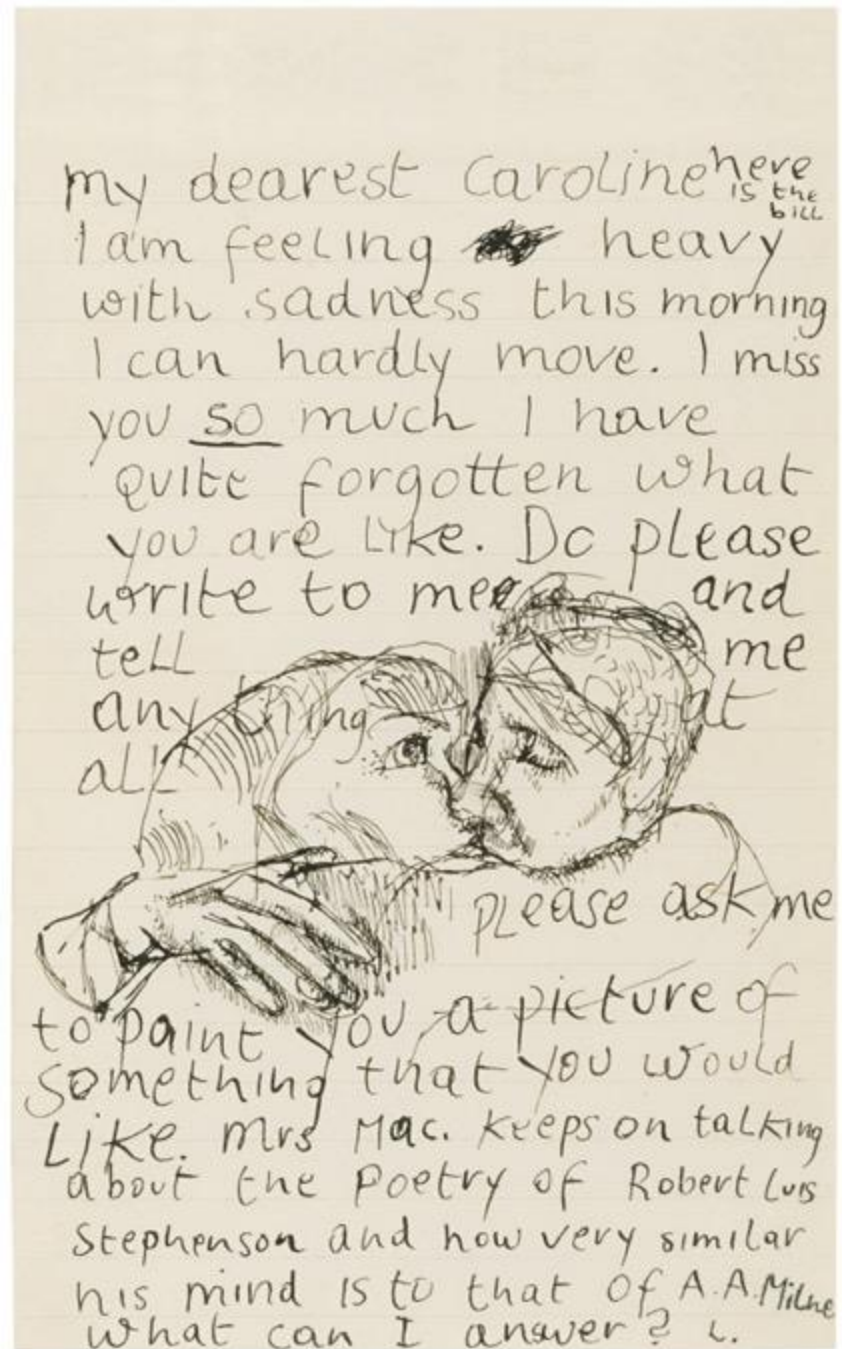
Lucian Freud OM CH

Berlin 1922-2011 London

*An Illustrated Letter from the Artist
to Caroline Blackwood*

Pen and black ink.

202 x 127 mm. (8 x 5 in.)





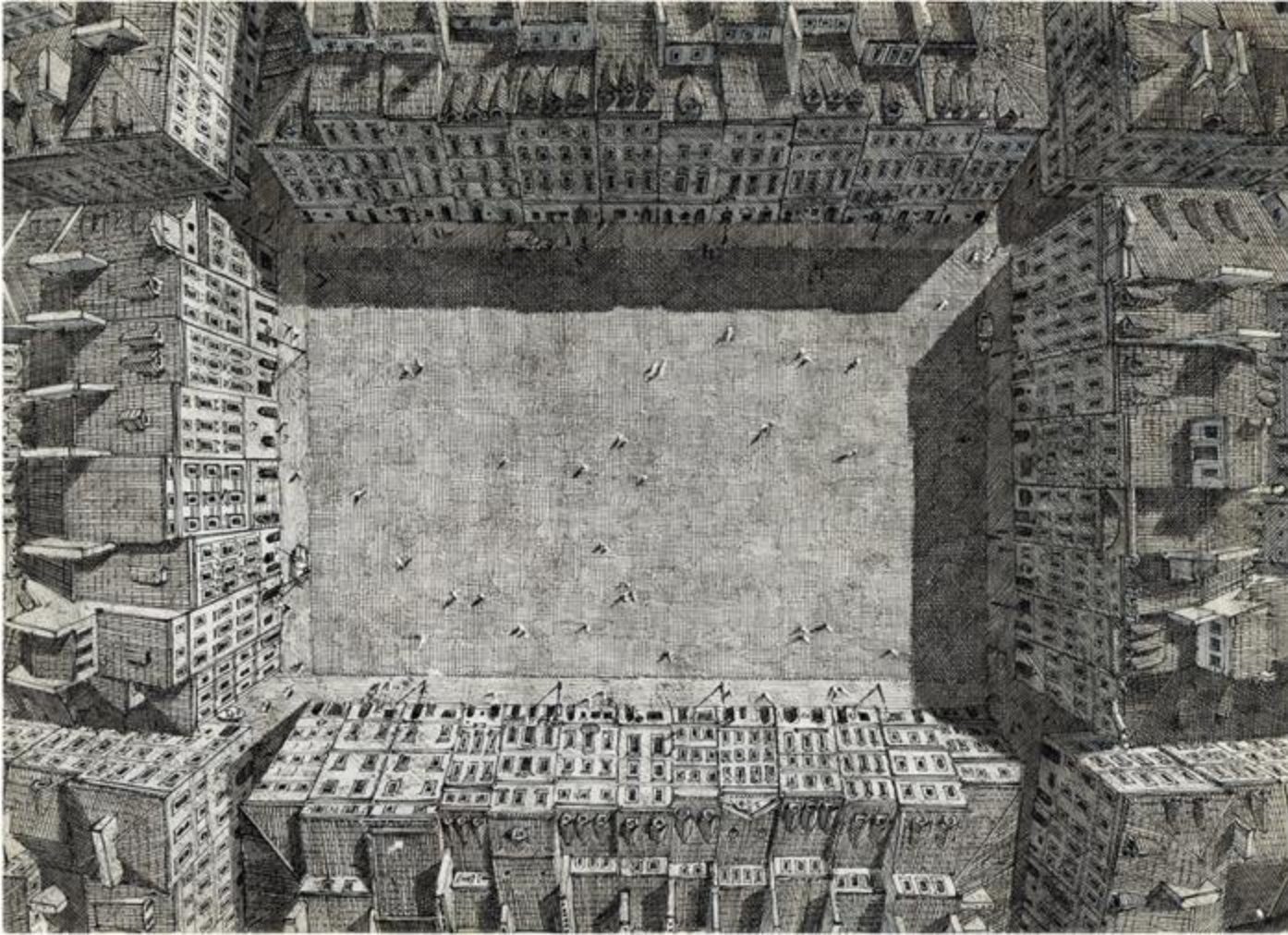
Paul Gauguin

Paris 1848-1903 Atuona

*Portrait Mask of Jacob Meyer de
Haan*

Watercolour, pencil and ink on buff
paper.

154 x 199 mm. (6 x 8 in.)



Domenico Gnoli

Rome 1933-1970 New York

Old Town Market Place, Warsaw

Pen and black (Indian) ink.

Inscribed *Starego Miastra square in / the old city, rebuilt identical / to what it used to be* on the verso.

Further inscribed *Gnoli – Warsaw* on the verso.

326 x 452 mm.

(12 7/8 x 17 3/4 in.)

Michael Goldberg

New York 1924-2007 New York

Untitled (White)

Oil on paper.

Signed *goldberg* at the lower right centre.

430 x 402 mm.

(16 7/8 x 15 7/8 in.)



Julio González

Barcelona 1876-1942 Arcueil

Women and Child with a Dog (*Maternité
au Chien*)

Watercolour, pencil and gouache on
buff paper

Signed *juli* at the right centre.

263 x 167 mm.

(10 3/8 x 6 5/8 in.)





Duncan Grant

Doune, nr. Aviemore 1885-1978
Aldermaston

*Nerissa Garnett Reading at
Charleston*

Oil, chalk and pastel on paper, laid
down on board.

Signed *DGrant* at the lower left.

Further signed with initials and
inscribed *DG / Nerissa* on the
reverse of the board.

468 x 629 mm. (18 3/8 x 24 3/4 in.)

Carl Franz Gruber

Vienna 1803-1845 Vienna

Still Life with Pears

Watercolour.

Signed *Carl Gruber* at the
lower left and numbered 14
at the upper right.

226 x 349 mm.

(8 7/8 x 13 3/4 in.) [sheet]



**Giovanni Francesco Barbieri, called
Guercino**

Cento 1591-1666 Bologna

An Evangelist Seated at a Table Writing

Pen and brown ink.

Inscribed *Guercino* at the lower left and
Guerchino on the backing sheet.

173 x 157 mm. (6 3/4 x 6 1/8 in.)





**Giovanni Francesco Barbieri,
called Guercino**

Cento 1591-1666 Bologna

A Bearded Old Man

Oiled black chalk.

201 x 244 mm. (7 7/8 x 9 5/8
in.)

**Giovanni Francesco Barbieri,
called Guercino**

Cento 1591-1666 Bologna

*The Virgin and Child with a Pot of
Lilies*

Red chalk, with framing lines in red
chalk.

296 x 232 mm.

(11 5/8 x 9 1/8 in.)



**Giovanni Francesco Barbieri, called
Guercino**

Cento 1591-1666 Bologna

A Sibyl

Red chalk.

Two small made up areas at the lower left
corner and the left centre, near the figure's
proper right shoulder.

185 x 211 mm. (7 1/4 x 8 3/8 in.)



**Giovanni Francesco Barbieri, called
Guercino**

Cento 1591-1666 Bologna

The Death of Saint Joseph

Black and red chalk, with stumping.

Squared for transfer in red chalk, and with
the borders of the sheet painted in gold
ink.

372 x 410 mm. (14 5/8 x 16 1/8 in.)





**Giovanni Francesco Barbieri, called
Guercino**

Cento 1591-1666 Bologna

*A Woman with a Vase of Flowers
(Flora?)*

Pen and brown ink.

257 x 182 mm. (10 1/8 x 7 1/8 in.)

**Giovanni Francesco Barbieri, called
Guercino**

Cento 1591-1666 Bologna

*Landscape with Travellers Before a Rustic
Building*

Pen and brown ink.

195 x 192 mm. (7 3/4 x 7 5/8 in.)



François-Joseph Guiguet

Corbelin 1860-1937 Corbelin

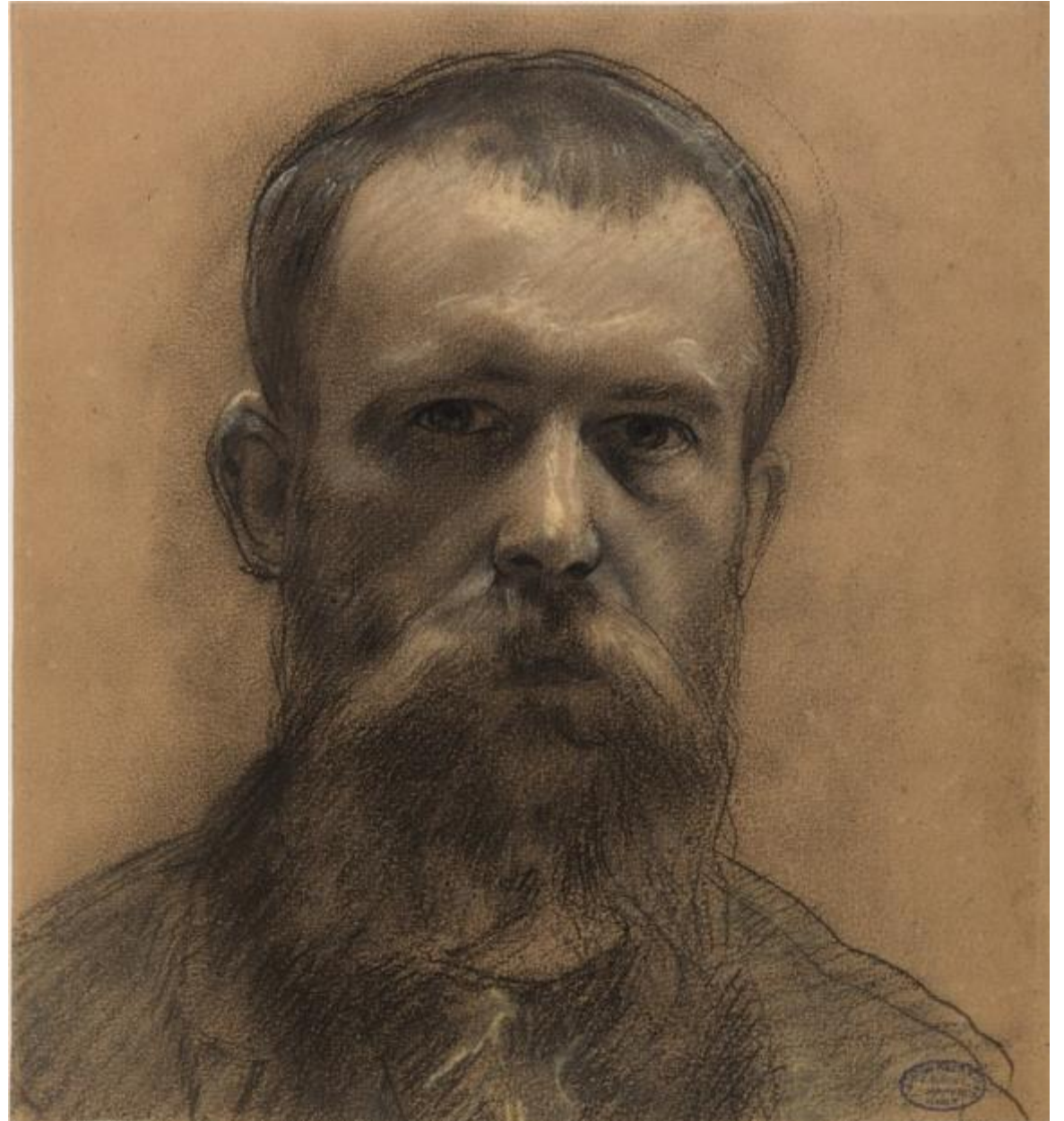
Self Portrait

Black and white chalk, with
stumping, on brown paper.

Inscribed *Autoportrait* and *Page 25 /*
17 on the verso.

328 x 306 mm.

(12 7/8 x 12 in.)





Jules Habert-Dys

Fresnes 1850-1930 Paris

Seven Original Illustrations for *Caprices Décoratifs: Les Oiseaux*, 1901

Each in watercolour and gold ink, over a pencil underdrawing.

Each signed J. Habert-Dys.

Each 260 x 180 mm. (10 1/4 x 7 1/8 in.)



Gunnar Hallström

Stockholm 1875-1943 Adelsö

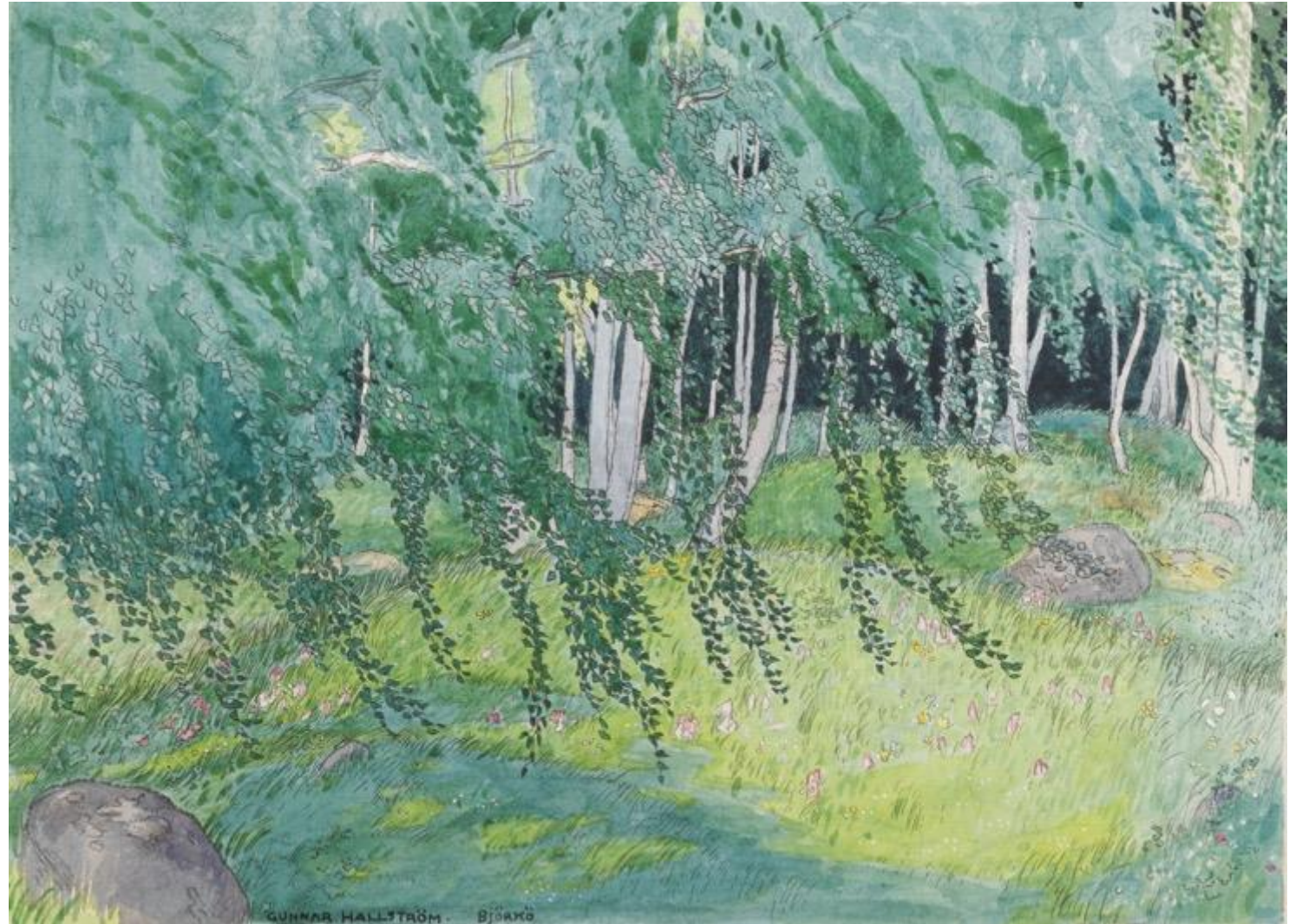
Trees at Björkö, Sweden

Pen and black ink and watercolour.

Signed and inscribed *GUNNAR HALLSTRÖM. BJÖRKÖ* at the lower left centre.

249 x 341 mm.

(9 3/4 x 13 1/2 in.)



Paul-César Helleu

Vannes 1859-1927 Paris

A Young Girl Looking Up to the Left
(*Fermez les rideaux*, from *Chansons
simplettes pour les petits enfants*)

Black, red and white chalks on buff
paper.

Signed *Helleu* at the lower right.

763 x 565 mm. (30 x 22 1/4 in.)



Victor Hugo

Besançon 1802-1885 Paris

Seascape with Ships in Fog

Pen, brush and brown ink and brown wash, with touches of white gouache.

56 x 247 mm. (2 1/4 x 9 3/4 in.)





Gwen John

Haverfordwest 1876-1939
Dieppe

Portrait of a Reclining Woman

Pencil and grey wash on paper;
a page from a sketchbook.

205 x 266 mm. (8 x 10 1/2 in.)

Paul Klee

Münchenbuchsee 1879-1940 Muralto

Night Impression of a Southern Town
(*Nacht-Eindruck einer südlichen Stadt*)

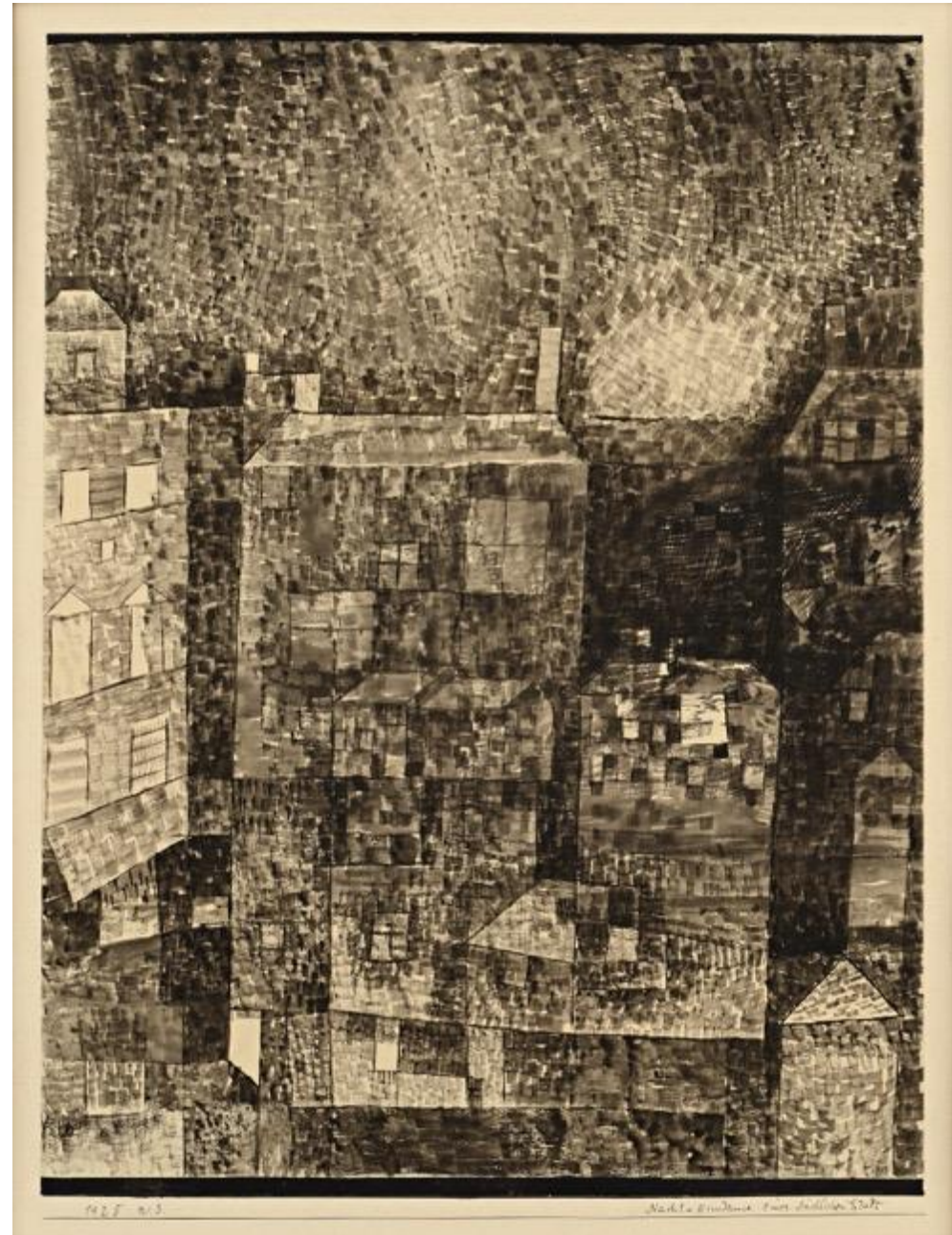
Pen, brush and black (India) ink and black and grey wash, on paper laid down onto the artist's mount.

Signed *Klee* at the lower left.

Dated and numbered *1925 n.3* and titled *Nacht-Eindruck einer südlichen Stadt* by the artist in the lower margin.

301 x 226 mm. (11 7/8 x 8 7/8 in.) [image]

411 x 326 mm. (16 1/8 x 12 7/8 in.) [mount]



Paul Klee

Münchenbuchsee 1879-1940 Muralto

Landscape in the Lower Alps
(*Voralpine Landschaft*)

Oil on paper.

A study of a horse or donkey(?) drawn in ink
on the verso, backed.

Faintly signed *Klee* at the lower left.

180 x 280 mm. (7 1/8 x 11 in.) [sheet]





Gustav Klimt

Vienna 1862-1918 Vienna

Two Female Nudes

Black chalk on buff paper.

Signed with the artist's initials *G. K.* at the lower centre and inscribed *R* at the lower right.

443 x 309 mm. (17 3/8 x 12 1/8 in.)

Sir Thomas Lawrence PRA

Bristol 1769-1830 London

The Beautiful Washerwoman

Black and red chalk, with stumping.

632 x 413 mm. (24 7/8 x 16 1/4 in.)



Ludovic-Napoléon Lepic

Paris 1839-1889 Paris

A Dog with a Letter

Gouache with pen and brown ink on brown paper.

587 x 451 mm. (22 3/4 x 17 1/2 in.)





Mathurin Méheut

Lamballe 1882-1958 Paris

Peacocks: Notes de Céramique

Watercolour, pen and brown and black ink with brown and grey wash.

Signed with the artist's monogram *MM* at the lower right.

Inscribed *M^{lle} / JULIETTE / THIERRY / RENNES* at the top, and *NOTES / DE / CÉRAMIQUE* at the bottom.

343 x 252 mm. (13 1/2 x 9 7/8 in.)

Cesare Mariani

Rome 1826-1901 Rome

*Studies of a Reclining Female
Nude*

Black chalk, heightened with white
chalk, on deep blue paper.

Signed *Cesare Mariani* at the
lower right centre.

328 x 435 mm. (12 7/8 x 17 1/8 in.)



Jacques Majorelle

Nancy 1886-1962 Paris

Seated Female Nude

Gouache, pastel and metallic powders on paper.

Signed and inscribed *J. Majorelle / Marrakech* at the lower right.

Inscribed *No.17. 28 Flasque et degouttée.* on the verso.

634 x 535 mm. (25 x 21 1/8 in.)



John Minton

Great Shelford 1917-1957 London

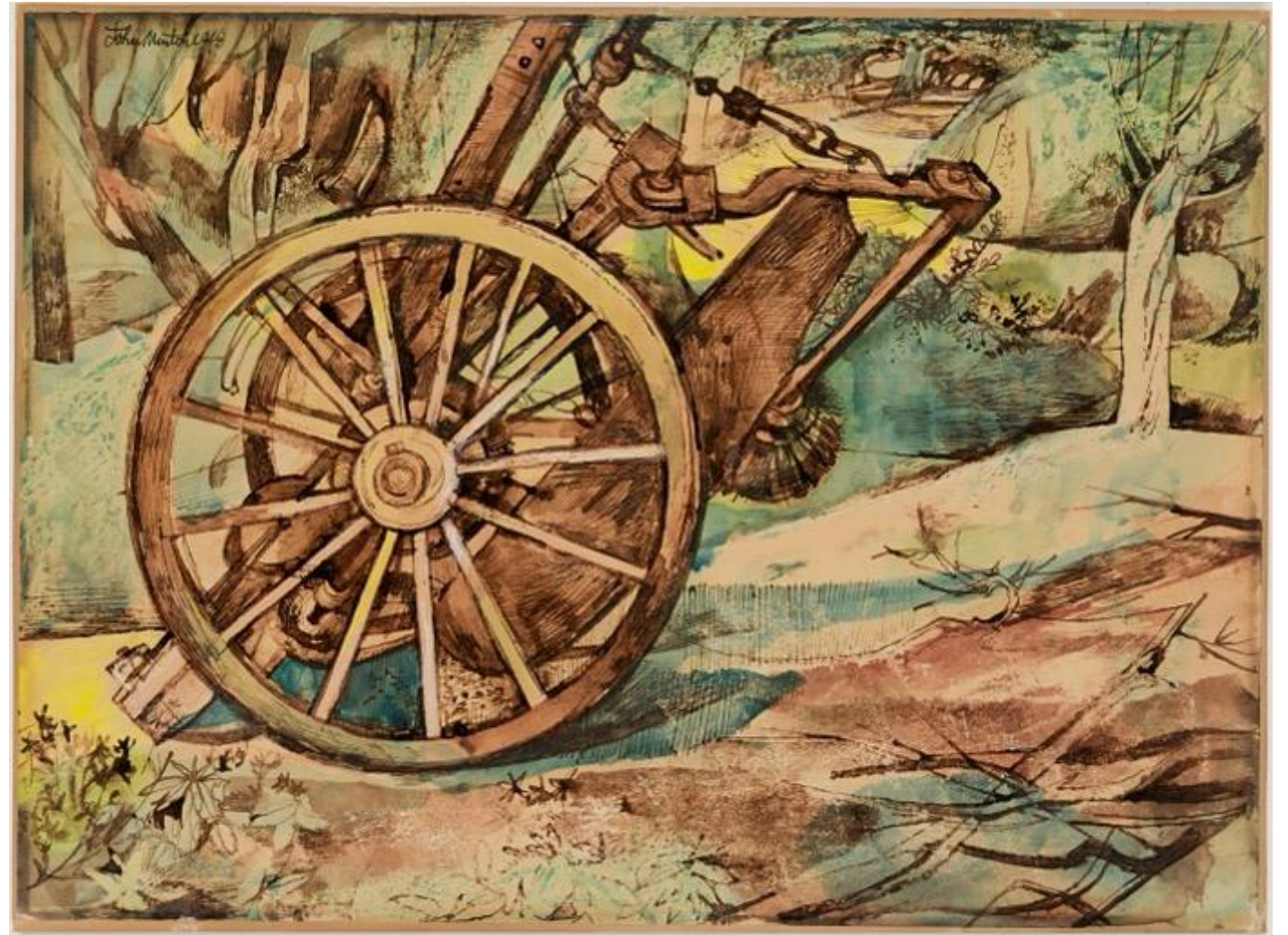
The Wheel (Derelict Farm Machine)

Pen and black ink and watercolour, with touches of white heightening, on paper laid down on board.

Signed and dated *John Minton 1948* at the upper left.

Inscribed by the artist *John Minton / THE WHEEL / Watercolour 1948* on a label pasted onto the verso.

280 x 381 mm. (11 x 15 in.)





Ernst Wilhelm Nay

Berlin 1902-1968 Cologne

Ohne Titel (Untitled), 1963

Watercolour on paper.

Signed and dated *nAy 63* at the lower right.

419 x 602 mm. (16 1/4 x 23 3/4 in.)

Ben Nicholson OM

Denham 1894-1982 London

Italian Columns (1965)

Pen, ink, watercolour and gouache on paper, laid down on the artist's prepared etched grey board

Signed, titled and dated *NICHOLSON /1965 / (Italian columns)* on the reverse of the backing board.

248 x 121 mm. (9 3/4 x 4 3/4 in.) [sheet]

317 x 248 mm. (12 1/2 x 9 3/4 in.) [board]





Pietro Antonio Novelli

Venice 1729-1804 Venice

A Seated Lion

Pen and brown ink and brown wash.

293 x 421 mm. (11 1/2 x 16 5/8 in.)

Anton Peschka

Vienna 1885-1940 Vienna

Autumn Vine Tendril

Watercolour over a pencil
underdrawing.

Signed *A. Peschka* at the lower
left.

283 x 240 mm. (11 1/8 x 9 1/2 in.)



Pablo Picasso

Málaga 1881-1973 Mougins

The Artist and his Model (*Le Peintre et son Modèle*)

Pen and black ink and white chalk on light brown card.

Dated 30.6.70. and signed *Picasso* at the upper left.

Dated and numbered 30.6.70. / 1 on the reverse.

224 x 309 mm. (8 3/4 x 12 1/8 in.)



Pablo Picasso

Málaga 1881-1973 Mougins

Nude with a Bunch of Grapes (*Nu à la Grappe de Raisin*)

Ballpoint pen on paper; a page from a sketchbook.

Dated and numbered *31.5.70. III / Picasso* at the upper right.

308 x 229 mm.



Jean-Louis Prévost

Nointel c.1760-c.1810?

Two Medlars and Wild Plants by a Stream

Watercolour and gouache on faded blue paper.

Signed *J. L. Prevost* at the lower right.

349 x 226 mm. (13 3/4 x 8 7/8 in.)





Henri Privat-Livemont

Schaerbeek 1861-1936 Schaerbeek

Landscape with Trees

Pastel, over traces of a pencil underdrawing, on canvas.

Signed *Privat Livemont* at the lower right.

812 x 1162 mm. (32 x 45 3/4 in.)

Gerhard Richter

Born 1932

7.1991

Black (India) ink on paper.

Signed and dated *Richter VII.91* at the lower left centre.

296 x 398 mm. (11 5/8 x 15 5/8 in.)





Egon Schiele

Tulln 1890-1918 Vienna

Portrait of a Child (Anton Peschka, Jr.)

Black crayon.

Signed and dated *EGON / SCHIELE / 1918*
at the lower right.

381 x 283 mm. (15 x 11 1/8 in.)

Giuseppe Signorini

Rome 1857-1932 Rome

A Man in a Japanese Costume

Watercolour over traces of a pencil underdrawing.

Signed and inscribed *Giusep. Signorini / Roma* at the lower left.

369 x 286 mm. (14 1/2 x 11 1/4 in.)



Eduard Stella

Vienna 1884-1955 Vienna

Wooded Landscape in Winter

Gouache and black chalk on paper laid down on board.

Signed *E. STELLA* at the lower left.

Further signed *E. STELLA* and *E. Stella* at the lower right, later covered with white gouache.

280 x 238 mm. (11 x 9 3/8 in.)





Graham Sutherland OM

London 1903-1980 London

Green Tree Form

Gouache on paper.

Signed and dated *Sutherland 62* at the lower right.

230 x 155 mm. (9 x 6 in.)



Edouard Vuillard

Cuiseaux 1868-1940 La Baule

Two Young Children at Play

Pastel on brown paper.
403 x 1091 mm. (15 7/8 x 43 in.)

(Percy) Wyndham Lewis

Amherst, Nova Scotia 1882-1957 London

Portrait of Edith Sitwell

Pencil on paper.

Signed and dated *Wyndham Lewis 1921* at the lower right.

575 x 388 mm. (22 5/8 x 15 1/4 in.)



STEPHEN ONGPIN FINE ART

Dealers and Agents in 15th to 20th Century Master Drawings

For further information on any of the works,
please email alesa@stephenongpinfineart.com or
call the gallery at +44 (20) 7930 8813.