

KATE MACGARRY

Frieze London

Dawn Ng

Booth A9

9 - 13 October 2024

Dawn Ng

Dawn Ng was born in 1982 and lives and works in Singapore. Ng's practice uses photography, light, film, collage, painting and large scale installations to consider time, memory and the ephemeral. In her recent series *Into Air* she emphasises temporality and beauty through her documentation of melting blocks of pigmented ice - sculptural forms that she creates in layers in the studio.

Ng assiduously builds blocks of frozen pigment with the skill of a chemist, a painter and a sculptor creating a medley of pigments, watercolours, dyes. The layers build, encrust and stagger. The final stage of the process results in 'residue paintings', paper steeped in the melted pigment over several weeks, worked with a combination of careful manipulation and chance. The result is topographical; we feel we've encountered a slab of quartz or a sulphuric tapestry. Encouraging slow looking, Ng's paintings are characterised by lyricism and a nuanced use of colour and draw visual parallels with the landscape and geology.

Recent solo exhibitions include Kate MacGarry, London (2023); *Into Air*, curated by Jenn Ellis, St Cyprian's Church, London (2022) and *Monument Momento*, Sullivan & Strumpf, Singapore (2020). Ng has been commissioned by the National Gallery Singapore (2023); UBS Art Collection (2023); Asian Civilisations Museum, Singapore (2020); ArtScience Museum, Singapore (2019) and the Hermès Foundation (2016). She has exhibited at the Institute of Modern Art, Australia (2024); Jeju Biennale, South Korea (2017); Musée d'art contemporain de Lyon, France (2015) and the Lille 3000 art festival, France (2015).



Dawn Ng

Frieze London

9 – 13 October 2024

Kate MacGarry is delighted to announce a solo presentation of works by Dawn Ng at Frieze London. The presentation will include a new series of 'Ash' paintings and photographic prints.

Encouraging slow looking, Ng's works is characterised by lyricism and a nuanced use of colour and draws visual parallels with topographical references of landscape and geology. Ng's practice uses photography, light, film, collage, painting and large-scale installations to consider time, memory and the ephemeral.

In her recent series *Into Air* she emphasises temporality and beauty through her documentation of melting blocks of pigmented ice, sculptural forms that she creates in layers in the studio. Ng's photographic prints build a topography of pigments, watercolours and dyes, photographed from multiple angles as they melt. Taking their individual titles from song lyrics that Ng has listened to when laboriously creating each block, they capture a moment of being and recollecting - crystallised, engrained.

The final stage of the process results in 'Ash' or 'residue' paintings - paper is steeped in the melted pigment over several weeks and the result is a new surface, a combination of careful manipulation and chance. The 'Ash' paintings each correspond to a particular block. Pigment sits on the paper with different behaviours according to medium; watercolour, dye and acrylic. For paintings on wood, boulders of pigment are shattered into arrangements of collapsed residue. The result is more akin to a map: avenues, tributaries, ducts connect and swirl, collectively heaving into place.



Rhodonite Mountain I, 2024
archival pigment print
127 x 127 x 6 cm (framed)
Edition of 1 + 2 AP

£ 15,000 ex tax

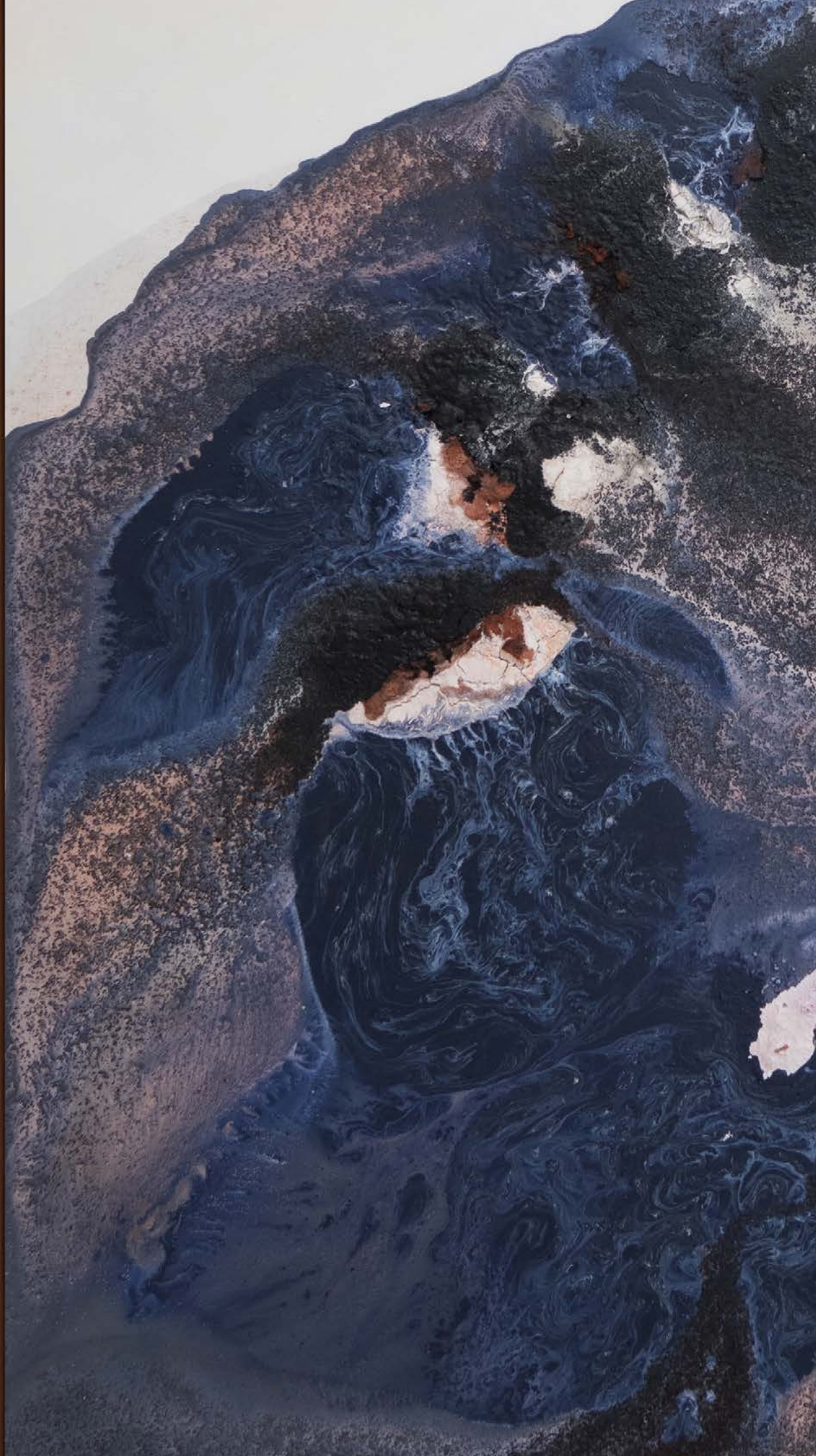




Archipelago in Blue, 2024
acrylic paint, dye, ink and sand on wood
104 x 104 x 5 cm (framed)

£ 19,000 ex tax







Gold Delta, 2024
acrylic paint, dye and ink on watercolour paper
192 x 135 x 5 cm (framed)

£ 20,000 ex tax

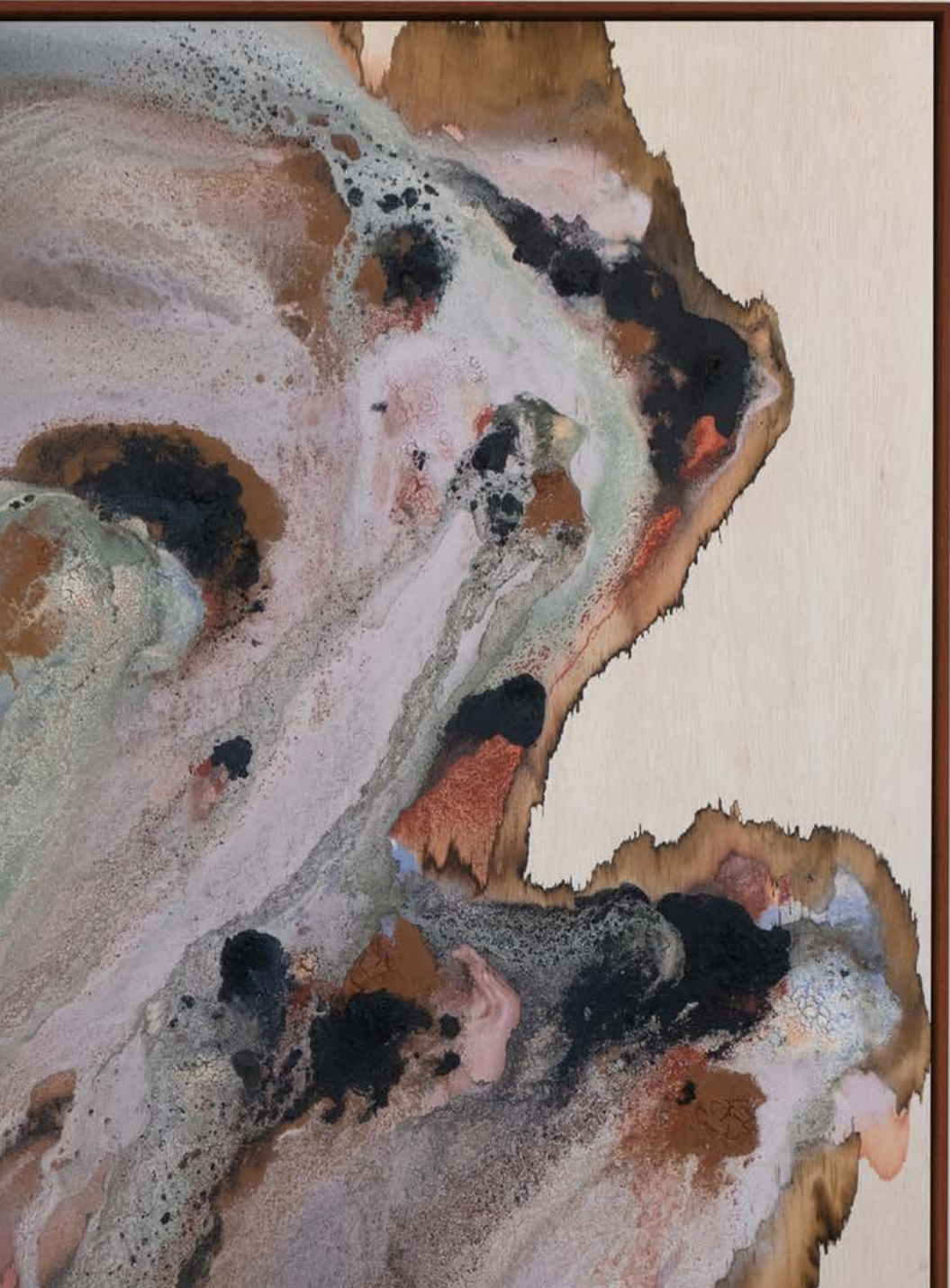




Flashing Streams, 2024
acrylic paint, dye, ink and sand on wood
149 x 89 x 5 cm (each, framed)

£ 28,000 ex tax







Rhodonite Mountain III, 2024
archival pigment print
127 x 127 x 6 cm (framed)
Edition of 1 + 2 AP

£ 15,000 ex tax



Tectonic Candy II, 2024
archival pigment print
83.6 x 112.2 x 5.5 cm (framed)
Edition of 1 + 2 AP

£ 11,500 ex tax





Tectonic Candy IV, 2024
archival pigment print
60.7 x 60.7 x 5 cm (framed)
Edition of 1 + 2 AP

£ 7,500 ex tax





Nocturnal Highlands, 2024
acrylic paint, dye and ink on watercolour paper
147.7 x 146.2 x 5 cm (framed)

£ 18,000 ex tax





Orchid Islands, 2024
acrylic paint, dye, ink and sand on wood
79 x 59 x 5 cm (each, framed)

£ 22,000 ex tax







Spring in Jupiter and Mars, 2024

lightbox

160 x 35 x 12 cm

Edition of 5 + 2 AP

£ 13,500 ex tax





Marapi, 2024
acrylic paint, dye and ink on wood
88 x 88 x 9 cm (framed)

£ 17,000 ex tax



KATE MACGARRY

27 Old Nichol Street, London E2 7HR

+44 (0) 20 7613 0515

www.katamacgarry.com

[@katamacgarry](#)