



**Art Basel  
Miami Beach 2024**

PACE PRINTS

For the 2024 edition of Art Basel Miami Beach, Pace Prints is pleased to present a selection of newly released editions and monoprints by Nina Chanel Abney, Ross Caliendo, Derek Fordjour, Michael Kagan, Scott Kahn, Jake Longstreth, Hilary Pecis, David Salle, Shahzia Sikander, Jonas Wood, and Robin F. Williams. The booth will also feature significant past editions by Leonardo Drew, Sam Gilliam, Chase Hall, Yoshitomo Nara, and Louise Nevelson, among others

The Pace Prints booth will highlight innovations in hand-made paper techniques, demonstrated in works like Shahzia Sikander's unique diptych, *The ERA Book*, and a new tactile edition by Derek Fordjour titled, *Mercantile on the Nile*, constructed of embossed hand-made paper, gold leaf, and finished with chalk pastel and glitter. Hilary Pecis plays with color and texture by building thin layers of paper pulp in *Peruvian Lilies*, infusing the traditional floral still life with warm and vibrant energy.

Pace Prints is proud to debut several new prints at Art Basel Miami Beach such as *Magic*, an edition by Nina Chanel Abney, and *Fireflies*, a luminous etching by Scott Kahn depicting a nocturnal landscape punctuated with gold leaf. Robin F. Williams' new monoprints continue to explore heroines of the 1970s horror film genre. Large-scale monoprints featured prominently in the booth include reliefs by Ross Caliendo, collages by David Salle continued from his *Tree of Life* series, and a collage by Michael Kagan featuring Finnish motorsports racing driver Kimi Räikkönen in a moment of victory.

Also on view will be a special presentation of *Five Bonsais*, a recently released series of five Ukiyo-e woodcuts that Jonas Wood created at Pace Prints with Master Printer Yasu Shibata. Each image required between 8 to 15 wood blocks that were inked with up to 66 individual colors, each applied by hand for every impression of the edition.

Please contact us at [info@paceprints.com](mailto:info@paceprints.com) to inquire about these and other works on display in our booth.

**P A C E   P R I N T S**

# Scott Kahn

b. 1946, Springfield, MA.

Scott Kahn is a New York based painter best known for his dreamlike landscapes. He has been the subject of numerous exhibitions in New York and abroad, including his current exhibition at David Zwirner, Hong Kong, the Long Museum, Shanghai, the ICA Miami, Florida, and the University of Pennsylvania, Philadelphia. He additionally received two grants from the Pollock Krasner Foundation and a residency at the Edward Albee Foundation in Montauk.

*Fireflies* is the second edition he has made in Pace Editions' studio and combines mediums to a lush and vibrant effect, exemplifying that of his practice.



## ***Fireflies, 2024***

Etching, relief and gold leaf

29 1/2 x 25 1/4 inches

Edition of 35

**\$7,500 (unframed) \*subject to tier pricing**



# Scott Kahn



***Cul de Sac (2022)***

Ukiyo-e woodcut with 32 colors

20 1/2 x 17 5/8

Edition of 35

**\$15,000 (unframed)**

# Leonardo Drew

b. 1961, Tallahassee, FL

The work of Leonardo Drew teeters between order and chaos. Primarily a sculptor working with reclaimed materials such as wood, stone, and tar, Drew has pushed the boundaries of paper in his ongoing collaboration with Pace Paper. He transforms paper pulp to look stony and eroded, creating reliefs to explore themes of decay and entropy.

His works have been widely exhibited and are included in the collections of the Metropolitan Museum of Art, The Guggenheim, The Museum of Contemporary Art in Los Angeles, The Hirshhorn Museum and Sculpture Garden, and Tate Modern, among many others.



**90P, 2021**

Pigmented and cast handmade paper  
with inclusions

58 3/8 x 39 1/2 x 4 3/4 inches

Edition of 5

**\$60,000 (unframed)**



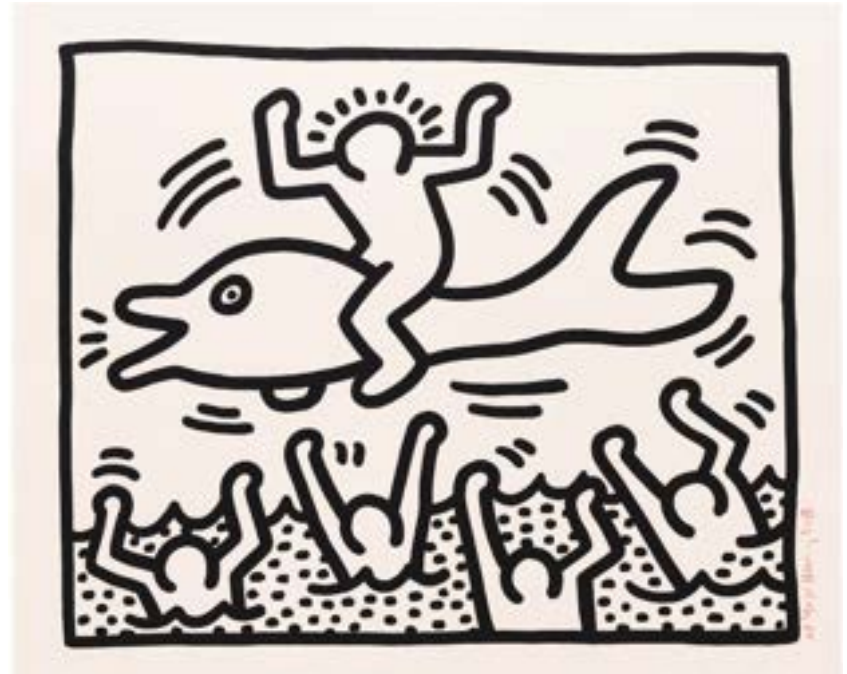
# Keith Haring

b. 1958, Reading, PA

d. 1990, New York, NY

Keith Haring was an artist and activist, whose oeuvre has become emblematic of the New York art scene in the 1980s. Pace Prints is proud to collaborate with the Keith Haring Foundation to present his work. Haring currently has a solo exhibition, *Black, White, and Red All Over* on view at Pace Prints through December 20, 2024.

*Untitled* (1987) is unmistakable in its capturing of Haring's graphic and ubiquitous style, which lends so naturally to print. It features the iconic linework and imagery that originated in his "Subway Drawings" and has become universally recognizable.



## ***Untitled, 1987***

Lithograph

29 1/2 x 35 3/8 inches

Edition of 170

**\$40,000 (unframed)**





# Derek Fordjour

b. 1974, Memphis, TN

Derek Fordjour's multilayered composition is rich in its materiality, as the artist layers on glitter and gold leaf before finishing each impression by hand. It is reflective of his tendency to depict performers and athletes, and positioning them in rife moments of communal and cultural ritual.

Fordjour's painting *Board Meeting (Brotherhood Smoke)* is included in an current exhibition, *Flight into Egypt: Black Artists and Ancient Egypt, 1876–Now* at the Metropolitan Museum of Art in New York City.

His work is also held in the private and public collections of The Studio Museum of Harlem, Guggenheim Museum, Metropolitan Museum of Art, SFMOMA, Brooklyn Museum, Perez Museum, The Whitney Museum and LACMA.



## ***Mercantile on the Nile, 2024***

Pigmented and embossed hand made paper with gold leaf, hand-painted ink pochoir hand-drawn chalk pastel and glitter

36 1/2 x 25 inches

Edition of 25

**\$15,000 unframed \*subject to tier pricing**



# Nina Chanel Abney

b. 1982, Chicago, IL

Nina Chanel Abney's works on paper give voice to the artist's social consciousness on a bold, "unapologetic" scale. Unified through her signature visual language of symbols and stylized figures, her prints and collages draw both subject and message from current events and society.

Abney currently lives and works in New York. Her work is included in collections globally, including the Museum of Modern Art, New York, the Brooklyn Museum, The Rubell Family Collection, Bronx Museum, and the Burger Collection, Hong Kong, among others.



***Magic, 2024***

Relief print

59½ x 39¼ inches

Edition of 30

**\$15,000 unframed \*subject to tier pricing**

X



# Austin Eddy

b. 1986, Boston, MA

Austin Eddy, a Brooklyn-based artist, makes birds the subject of his brilliant, abstract compositions. His works are each a unique culmination of various papermaking techniques developed at Pace Paper and mirror the intersecting planes of color and light of his vision.

Eddy has been the subject of solo exhibitions internationally at Livie Fine Art, Zurich (2023, 2021), Galerie Eva Presenhuber, Greece (2022), Knust Kunz, Munich (2022), Le Consortium, Berggruen Gallery, San Francisco (2023), Galerie Eva Presenhuber, New York, (2022), among others.



## **The Silence Of A Stream Side Field At Night, 2023**

Pulp painting, blowout, ink, pencil and collage  
on handmade paper

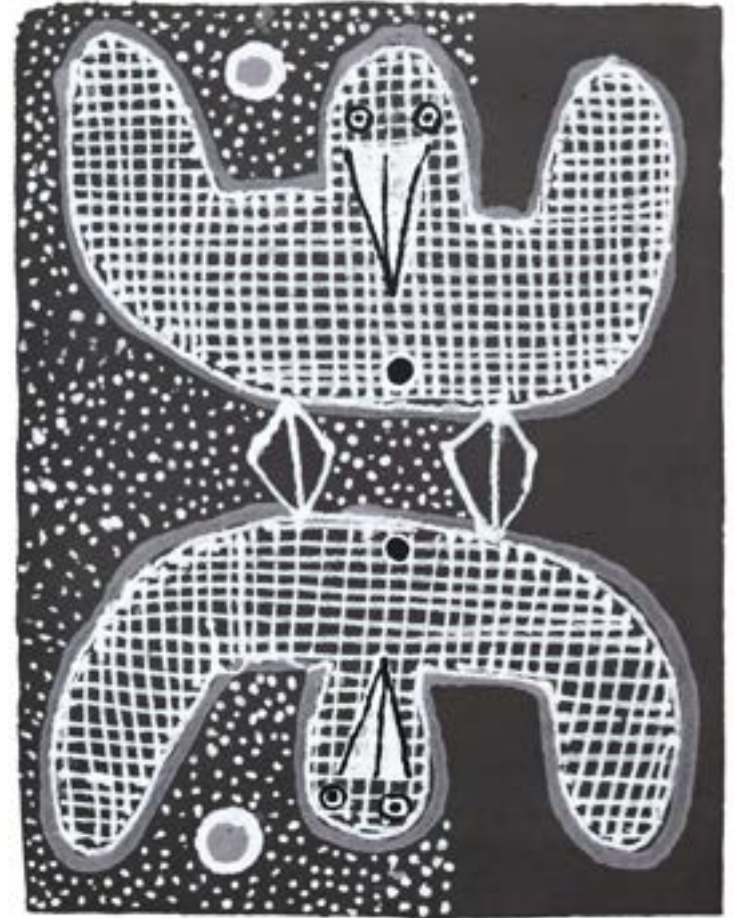
34 1/2 x 22 inches

Unique

**\$8,000 (framed)**



# Austin Eddy



***Quiet Reflection, 2023***

Pulp painting on handmade paper

40 x 30 1/2 inches

Unique

\$10,000 (framed)



# Chase Hall

b. 1993, Saint Paul, MN

Chase Hall's paintings respond to a variety of social and visual systems, each of which intersects with complex trajectories of race, hybridity, economics, and personal agency. Over the course of his multiyear collaboration with Pace Editions, Hall developed a method of printmaking using coffee that allows for a remarkable range of color and tone.

Hall has been the subject of numerous solo exhibitions, including his current show at David Kordansky Gallery in Los Angeles, *Halficans*; Pace Prints ADAA 2024 booth exhibition of monoprints by Hall; SCAD Museum of Art, Savannah, Georgia, in 2023, and *Melanoidin* at Pace Prints in 2023, along with several others. His work is in the permanent collections of the Metropolitan Museum of Art, the Dallas Museum of Art, the Walker Art Center, the Los Angeles County Museum of Art, the Whitney Museum of American Art, and others.



## ***Sheep's Wool, 2023***

Jigsaw relief with coffee grounds and ink  
on cotton paper

30 1/4 x 24 5/8 inches

Edition of 10

**\$8,500 (framed)**



# Chase Hall



***Baylee and The Bandana, 2023***

Jigsaw relief with coffee grounds and  
ink on cotton paper

37 1/2 x 28 7/8 inches

Edition of 10

**\$11,500 (framed)**



# Michael Kagan

b. 1980, Virginia Beach

Michael Kagan, a Brooklyn-based painter, uses large expressive brushstrokes to depict racecar drivers, astronauts, and others who embody intensity, stamina, and exploration. In his newest monoprints, collage and monotyping build surfaces full of action and velocity.

His work is held in many public collections, including Maki Collection in Tokyo, Japan; Hall Collection in Reading, VT, USA; Gemini Trust Company in New York, NY, USA; among others. Special projects include two apparel collaborations with Pharrell Williams, and an award-winning album cover for White Lies.



## ***Iceman (day), 2024***

Monoprint and collage on panel

38 x 50 inches

**\$35,000 (framed)**



# Michael Kagan



***Hamilton (night), 2024***

Monoprint and collage on panel

40 x 26 3/4 inches

\$25,000 (framed)

# Jonas Wood

b. 1977, Boston, MA

Jonas Wood paints interiors and domestic spaces that he has translated into elemental color and line. With Pace Editions, Wood has explored a breadth of techniques—etching, aquatint, and ukiyo-e woodcut—to produce work both skillful and warm with familiarity.

Jonas Wood has been the subject of solo exhibitions, including his recent solo exhibition at Gagosian, London in 2024, the Hammer Museum, the Dallas Museum of Art, and many others. His work is included in the permanent collections of the Hirshhorn Museum and Sculpture Garden, Washington, Metropolitan Museum of Art, San Francisco Museum of Modern Art, and the Guggenheim Museum.



## ***Five Bonsais, 2024***

Set of five Japanese Ukiyo-e style woodcuts

24 3/4 x 22 inches, each

Edition of 35

**\$85,000 (unframed)**







# Yoshitomo Nara

b. 1959, Hirosaki, Aomori Prefecture Japan.

Yoshitomo Nara's images reference a world inhabited by children and animals, often brandishing weapons, frequently irritated and angry, but also vulnerable and sad. Nara works with master printer, Yasu Shibata, to sensitively capture his figures using ukiyo-e woodcut.

Nara's work is included in the collections of Aomori Prefectural Museum of Art and the Japan Foundation in Japan, Museum of Contemporary Art in Los Angeles, Museum of Modern Art, New York, NY, San Francisco Museum of Modern Art, among others.



***Untitled (Eye Patch), 2012***

Ukiyo-e woodcut with collage

27 x 19 inches

Edition of 50

**\$150,000 framed**



# Yoshitomo Nara



***Sprouts in Hands, 2013***

Ukiyo-e woodcut

30 x 13 1/2 inches

Edition of 25

**\$125,000 (framed)**



# Keltie Ferris

b. 1977, Louisville, KY

Keltie Ferris is known for his large-scale, multidimensional works covered with spray paint and hand-painted geometric fields. Ferris's unique works on paper capture a perceptual depth achieved by the spontaneous layering, stenciling of paper pulp, and dispersal of pigment.

Recent solo exhibitions include dOUbTsWISHes at Mitchell-Innes & Nash, New York; +++c+o+n+t+a+c+t+++ at Morán Morán, Mexico City; //TWO\FOLD\\ at Klemm's Gallery, Berlin; N(((o)))W at Gana Art Sounds, Seoul; FEEEEELING at Mitchell-Innes & Nash, New York; and \*O\*P\*E\*N\* at the Speed Museum, Louisville, KY, among many others.



## ***Untitled, 2023***

Unique blowout drawing with pigmented and stenciled handmade paper

40 3/4 x 31 inches

**\$12,000 (framed)**





# Keltie Ferris



***Sift Shake Shake, 2024***  
Unique pigment dispersion  
40 x 30 1/4 inches  
**\$12,000 (framed)**

# Keltie Ferris



***Ebb, 2024***

Unique pigment dispersion

40 x 30 inches

**\$12,000 (framed)**

# Shara Hughes

b. 1981, Atlanta, GA

Shara Hughes uses dizzying brushwork, vibrant colors, and shifting perspectives to make paintings that defy many of the existing conventions associated with the landscape genre. Natural motifs and patterned elements recur throughout Hughes's pictures; she transposes the psychological complexity of her interior world into lush and layered compositions.

Hughes was the subject of solo exhibitions at FLAG Art Foundation; Kunstmuseum Luzern, Switzerland; Yuz Museum, Shanghai; Contemporary Art Museum St. Louis; Garden Museum, London; among others. Her work is in the permanent collections of institutions including The Metropolitan Museum of Art, Denver Art Museum, and Smithsonian American Art Museum.



## ***You Do You, 2020***

Watercolor monotype

36 3/4 x 27 1/4 inches

Unique

**\$40,000 (framed)**



# Shara Hughes



***In a Simple Mood, 2020***

Watercolor monotype

24 1/2 x 18 3/4 inches

Unique

**\$30,000 (framed)**



# Sam Gilliam

b. 1933, Tupelo, Mississippi

d. 2022, Washington D.C.

Sam Gilliam (b. 1933, Tupelo, Mississippi; d. 2022, Washington D.C.) was one of the great innovators in postwar American painting. He emerged from the Washington, D.C. scene in the mid 1960s with works that elaborated upon and disrupted the ethos of Color School painting. His silkscreens layer, crease, and dance with color, recalling the dynamism of his drape paintings.

In addition to a traveling retrospective organized by the Corcoran Gallery of Art, Washington, D.C. in 2005, Sam Gilliam was the subject of solo exhibitions at the Museum of Modern Art, New York (1971); The Studio Museum in Harlem, New York (1982); and the Whitney Museum of American Art, among others.



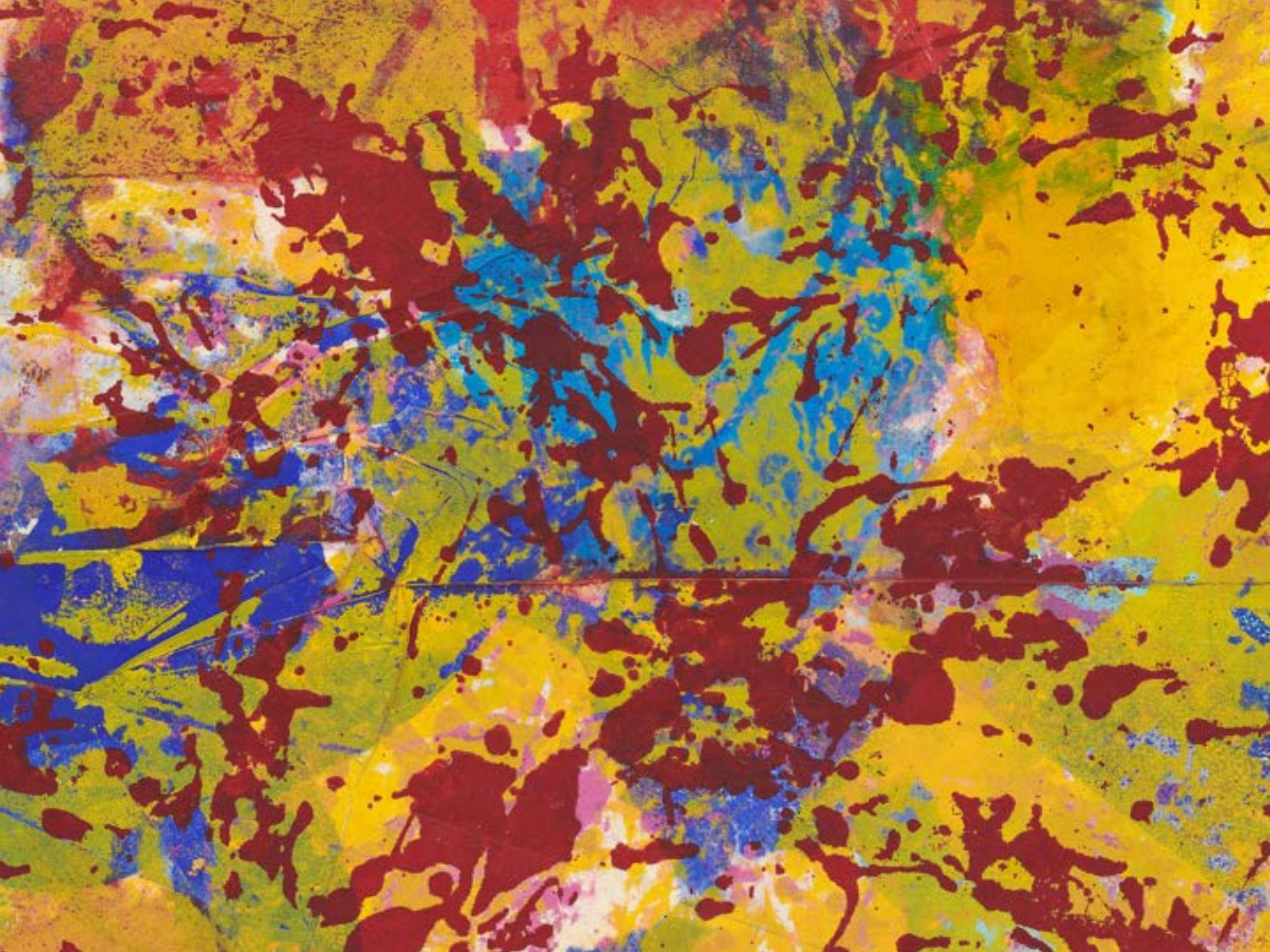
***Untitled (1973)***

Silkscreen on handmade paper

20 3/4 x 21 1/4 inches

Edition of 14

**\$6,000 (framed)**





# Sam Gilliam



***A Fog in the Hollow, 1974***

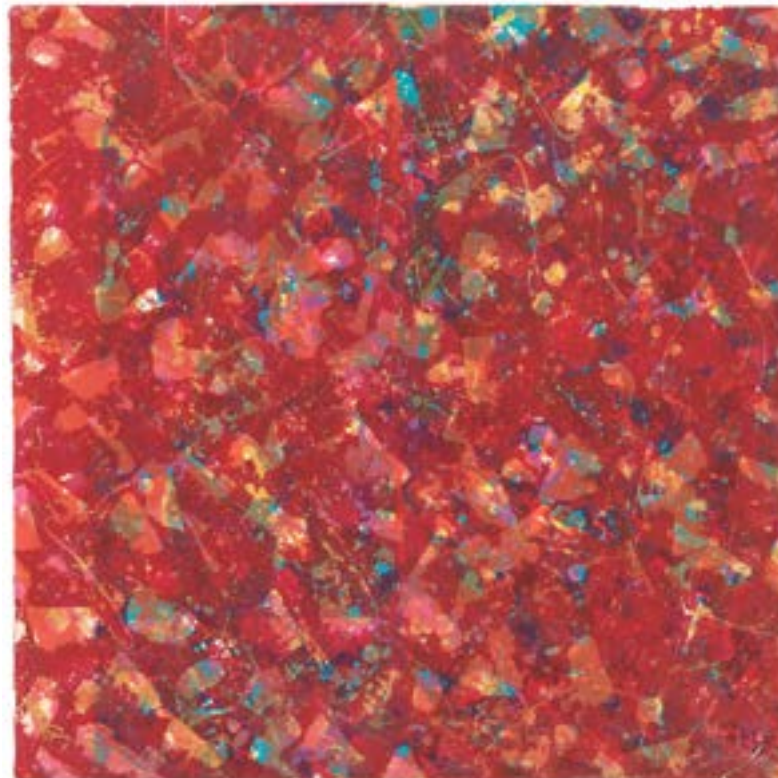
Screenprint on handmade paper

24 x 36 1/2 inches

Edition of 20

**\$8,000 (framed)**

# Sam Gilliam



***LL: Phase, 1974***  
Silkscreen  
30 x 29 1/2 inches  
**\$6,000 (framed)**

# Hilary Pecis

b. 1979, Fullerton, CA

Hilary Pecis's saturated colors and interlocking planes bode well for her exploration in papermaking. Using pigmented paper pulp, Pecis stencils each detail of her work, embedding them into the fabric of the handmade paper.

Hilary Pecis has been the subject of solo exhibitions at David Kordansky Gallery, New York City and Los Angeles; Rockefeller Center, New York; Timothy Taylor, London; Spurs Gallery, Beijing; Rachel Uffner Gallery, New York; and Crisp-Ellert Art Museum, Flagler College, St. Augustine, Florida. Her work is in the permanent collections of the National Gallery of Art, Washington, D.C.; Columbus Museum of Art, Ohio; Aishti Foundation, Beirut; and Yuz Museum, Shanghai.



## ***Peruvian Lilies, 2024***

Pigmented and stenciled handmade paper

19 3/4 x 15 3/4 inches

Edition of 35

**\$3,500 unframed \*subject to tier pricing**



# Hilary Pecis



***Sunset, 2024***

Pigmented and stenciled handmade paper

40 1/8 x 30 inches

Edition of 35

**\$9,000 (unframed)**

# Jake Longstreth

b. 1977, Sharon, CT

Jake Longstreth is a Los Angeles-based artist largely inspired by the landscapes surrounding him, inclusive of their commercial elements. His work embraces manmade intrusions in the midst of Southern California's cerulean skies and abundant flora. They often depict nostalgic and foregone brands, mundane shopping center parking lots, and environmental hazards, imbuing the otherwise picturesque scenes with frank irony.

Longstreth has been the subject of numerous solo exhibitions at Galerie Max Hetzler, Nino Mier Gallery in Brussels and Los Angeles, the Crisp Ellert Museum, Monte Vista Projects, along with group exhibitions at Almine Rech, David Kordansky Gallery, Blum & Poe, and many more.



**Summer of '87 (2019)**

Silkscreen

30 1/2 x 29 3/4 inches

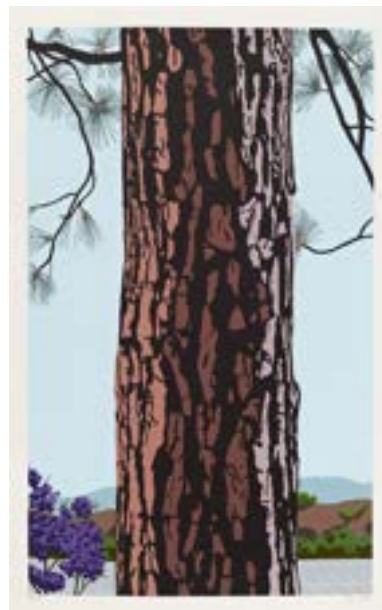
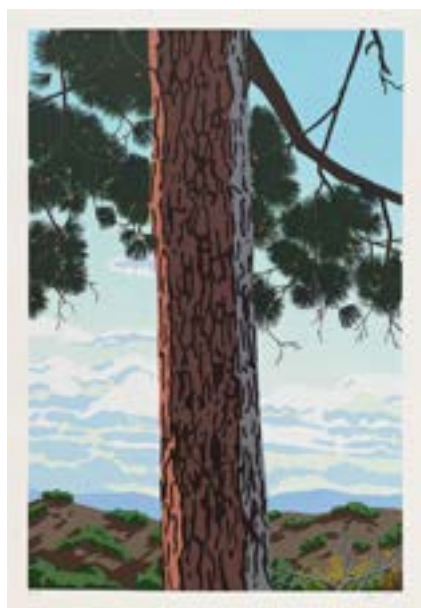
Edition of 50

**\$4,500 (unframed)**



Pizza Hut

# Jake Longstreth



## ***Los Angeles Pines, 2022***

Set of four silkscreens

45 x 31 inches, each

Edition of 50

**\$25,000 (unframed)**



# Jake Longstreth



***Sierra Nevada Foothills, Scottsdale,  
Palo Alto, 1970, Along the 134, 2024***

Set of four etching and relief prints with  
hand finishing

Various sizes

Edition of 35

**\$10,000 (unframed)**



# Santi Moix

b. 1960, Barcelona, Spain

Santi Moix's work is characterized by accumulation and fragmentation, sensuality and an acute sense of form. In his series, Future Flora, Moix coalesces motifs from earlier series published with Pace Editions, applying them to floral imagery to explore the cyclical nature of growth and decay. Moix recently had a solo exhibition at Pace Prints in 2024.

Moix also was awarded a John Simon Guggenheim Memorial Foundation fellowship in 2002, and has worked on special projects for the Brooklyn Museum, Palau de la Musica Catalana of Barcelona, and the frescoes in Sant Victor of Seuri in the Pyrenees.



## **Future Flora 6, 2024**

Watercolor monoprint with collage

50 5/8 x 44 1/2 inches

Unique

**\$17,500 (framed)**



# Louise Nevelson

b. 1899, Pereiaslav, Ukraine

d. 1988, New York, NY



## ***Morning Haze, 1978***

White cast paper relief diptych

33 x 46 inches

Edition of 125

**\$30,000 (unframed)**

Handwritten text in Arabic script, arranged in five columns and five rows. The text is written in a cursive style on a light-colored background.

بسم الله الرحمن الرحيم	الحمد لله رب العالمين	والصلاة والسلام على	سيدنا محمد وآله الطيبين	الطاهرين
الذين هم خيرا بخلقهم	وقد جئناك بالقول	بين يدينا وبينك وبين	آلينا وبين آلنا وبين	آلنا وبين آلنا
والصلاة والسلام على	سيدنا محمد وآله الطيبين	الطاهرين	الذين هم خيرا بخلقهم	وقد جئناك بالقول
بين يدينا وبينك وبين	آلينا وبين آلنا وبين	آلنا وبين آلنا	والصلاة والسلام على	سيدنا محمد وآله الطيبين
الطاهرين	الذين هم خيرا بخلقهم	وقد جئناك بالقول	بين يدينا وبينك وبين	آلينا وبين آلنا وبين

Handwritten text in Arabic script, arranged in five columns and five rows. The text is written in a cursive style on a light-colored background.

والصلاة والسلام على	سيدنا محمد وآله الطيبين	الطاهرين	الذين هم خيرا بخلقهم	وقد جئناك بالقول
بين يدينا وبينك وبين	آلينا وبين آلنا وبين	آلنا وبين آلنا	والصلاة والسلام على	سيدنا محمد وآله الطيبين
الطاهرين	الذين هم خيرا بخلقهم	وقد جئناك بالقول	بين يدينا وبينك وبين	آلينا وبين آلنا وبين
آلنا وبين آلنا	والصلاة والسلام على	سيدنا محمد وآله الطيبين	الطاهرين	الذين هم خيرا بخلقهم
وقد جئناك بالقول	بين يدينا وبينك وبين	آلينا وبين آلنا وبين	آلنا وبين آلنا	والصلاة والسلام على

# Ross Caliendo

b. 1988, Pittsburgh, PA

Ross Caliendo is best known for his explorations of color and texture through landscape. These unique works are the first of his collaboration with Pace Editions.

He has been the subject of numerous solo exhibitions: CVG Foundation, Beijing; Ross+Kramer, East Hampton and New York; Grifter, New York; No Place Gallery, Columbus; among others.



## ***Untitled, 2024***

Jigsaw relief with collagraph from magnetic matrix

39 3/4 x 60 inches

Unique

**\$15,000 (framed)**





# Robin F. Williams

b. 1984, Columbus, OH

Known for her large-scale paintings of stylized, sentient, yet ambiguously generated female figures, Robin F. Williams fuses practices from social media channels such as Instagram, TikTok, and YouTube with references to early modernism, pop culture, advertising, and cinema to challenge the systemic conventions around representations of women.

Williams has presented solo exhibitions at P·P·O·W, New York, NY; Various Small Fires, Los Angeles, CA; Bard College at Simon's Rock, Great Barrington, MA; and Jack the Pelican Presents, Brooklyn, NY and is currently in the permanent collections of the Brooklyn Museum, Brooklyn, NY; Collection Majudia, Montreal, Canada; Columbus Museum of Art, Columbus, OH.



**Static, 2024**

Relief and monoprint

34 x 38 3/8 inches

Unique

**\$20,000 (framed)**



# Robin F. Williams



***Panic (4), 2024***  
Relief and monoprint  
33 1/8 x 41 inches  
Unique  
\$20,000 (framed)



# Robin F. Williams



***Splice, 2024***  
Etching and relief  
21 x 16 1/2 inches  
Unique  
**\$7,500 (framed)**

# Robin F. Williams



***Splice (2), 2024***  
Etching and relief  
21 x 16 1/2 inches  
Unique  
**\$7,500 (framed)**

# David Salle

b. 1952, Norman, Oklahoma

David Salle is a contemporary American painter, printmaker, and photographer. He is known for his collage-like paintings layering figures and patterns into colorful compositions. His unique prints combine references from pop culture and art history, while also exploring techniques such as monotype, jigsaw relief, and papermaking.

Recent solo exhibitions of his artworks have been up at Gladstone Gallery and Pace Prints in New York City. Salle has also been the subject of solo presentations at the Whitney Museum, New York; Museum of Contemporary Art, Los Angeles; Museum of Contemporary Art, Chicago; Stedelijk Museum, Amsterdam; and many others. He has also participated in major international expositions including Documenta 7 (1982), Venice Biennale (1982 and 1993), Whitney Biennial (1983, 1985, and 1991), Paris Biennale (1985), and Carnegie International (1985).



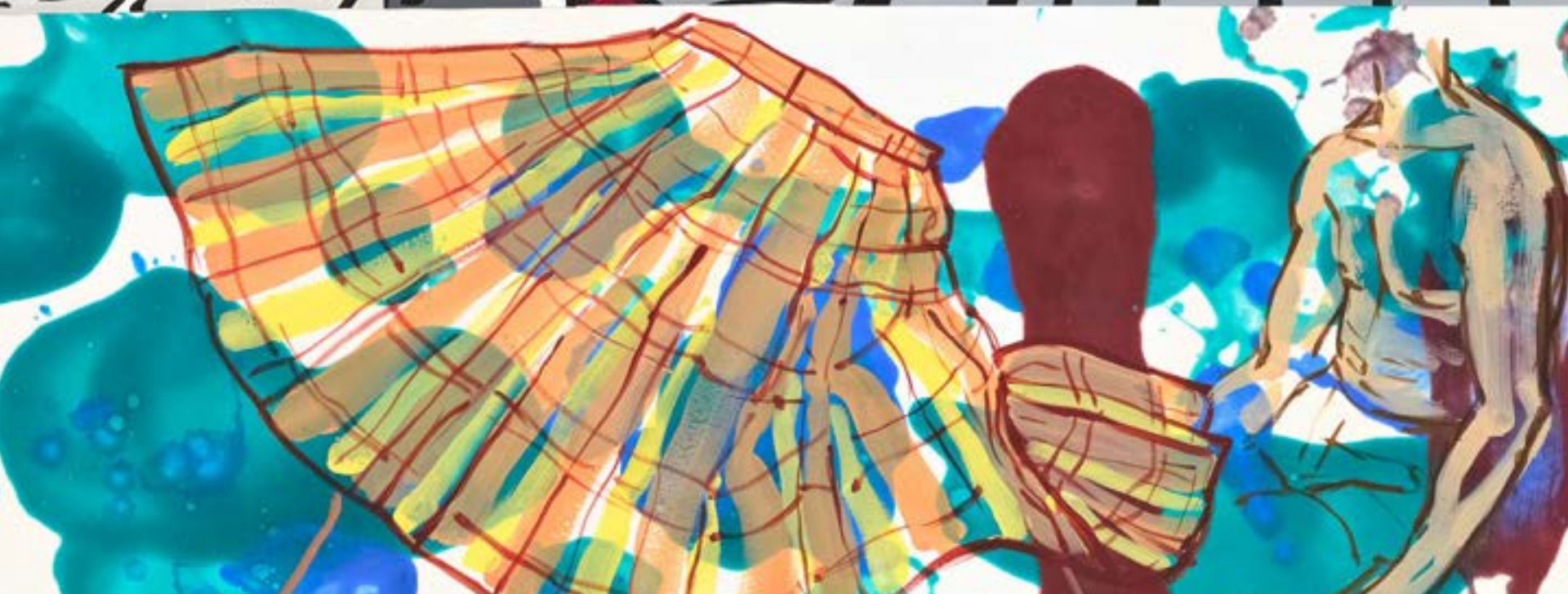
***Untitled, 2024***

Collage on panel with hand finishing

66 x 44 inches

Unique

**\$65,000 (framed)**





# David Salle



***Untitled, 2024***

Collage on panel with hand finishing

66 x 44 inches

Unique

**\$65,000 (framed)**

# David Salle



**WINDOWS #33, 2024**

Flashe on archival digital print mounted on museum box with silkscreen and flashe on canvas  
62 x 40 inches  
**\$80,000 (framed)**

# David Salle



**WINDOWS #38, 2024**

Flashe on archival digital print mounted on museum box with silkscreen and flashe on canvas  
62 x 40 inches  
\$80,000 (framed)

# Shahzia Sikander

b. 1969, Lahore, Pakistan

Shahzia Sikander is widely celebrated for subverting Central and South-Asian manuscript painting traditions and launching the form known today as neo-miniature. Sikander's prints introduce elements of experimentation and spontaneity to her practice, as she worked extensively with both Pace Editions and Pace Paper, lending this body of work a complexity of surface that is not easily reduced or defined.

Sikander's solo exhibitions include a recent presentation at the Venice Biennale, the Museum of Fine Arts, Houston in Texas; the Guggenheim Museum in Bilbao, Spain; the Hirshhorn Museum in Washington, D.C.; and the Whitney Museum of American Art, among many others. Sikander's work is in the collections of several institutions, including the Metropolitan Museum of Art, the National Gallery of Art in Washington, D.C., the Whitney Museum of American Art, the Solomon R. Guggenheim Museum, and many others.



## ***Migrant Love, 2024***

Stenciled pulp painting with printed kozo inclusion

60 x 39 1/2 inches

Edition of 10

**\$50,000 (unframed)**



# Shahzia Sikander



## ***The ERA Book, 2024***

Fifteen color unique stenciled pulp painting  
with blowouts, gold leaf, and hand-painted  
gouache

60 1/4 x 39 5/8 inches

Unique

**\$125,000 (framed)**

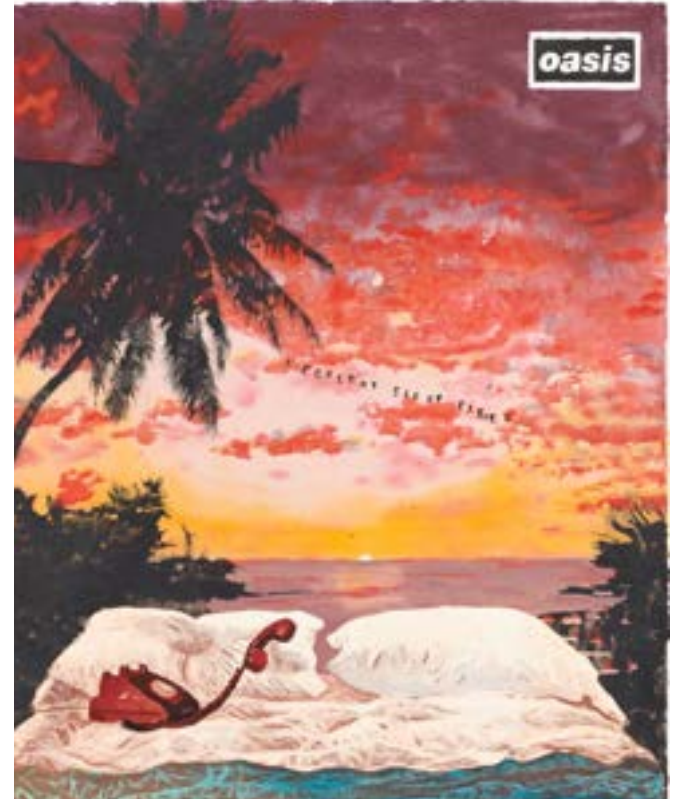


# Friedrich Kunath

b. 1974, Chemnitz, Germany

Friedrich Kunath creates exuberant landscapes, layering brilliant skies with a floating line of heartfelt text, appropriated from references like postcards or perfume scents. *I Couldn't Sleep Either* is the artist's only edition published with Pace Prints, combining handmade paper with collaged etching to produce its bittersweet effect.

His work has been the subject of numerous worldwide solo exhibitions, including Kunstsammlung and the Hammer Museum, Los Angeles, CA, among others.



## ***I Couldn't Sleep Either*, 2022**

Stenciled and embossed handmade paper with collaged soap ground etching and hand finishing  
35 1/2 x 29 1/2 inches

Edition of 25

\$7,500 (unframed)



# José Lerma

b. 1971, Seville, Spain

José Lerma is an artist working primarily in portraiture, known for distilling and recording his subjects with thick impasto. At Pace Paper, Lerma experimented with creating a mold from one of his paintings, allowing him to cast paper to mimic his typical, bold swaths of paint.

Now teaching at the Art Institute of Chicago, Lerma has had over twenty solo exhibitions at galleries such as Almine Rech in Paris, London and Shanghai; Kavi Gupta in Chicago, IL; Galerie Xavier Hufkens in Brussels; Andrea Rosen Gallery in New York, NY. His work has also been show and collected by museums such as the Museum of Contemporary Art Detroit, the Museum of Contemporary Art in Chicago, The Saatchi Collection in London, the Museum of Fine Arts in Houston, and the Whitney Museum of American Art.



## **Ana (Azure) ,2024**

Cast and pigmented handmade cotton paper  
40 x 30 inches  
**\$10,000 (framed)**

# Pat Phillips

b. 1987, Lakenheath, England

Pat Phillips's practice reflects on America's foundation and institutions, combining personal and historical imagery to untangle the complexities of the country's militarized culture and social hierarchies. *Untitled "Stand Down"* depicts a fire hose winding into a snake, referencing historical moments of protest, racial violence, and unrest.

Phillips's work was featured in the 2019 Whitney Biennial and has been the subject of solo exhibitions at Jeffrey Deitch, New York; M+B Gallery, Los Angeles; Catinca Tabacaru Gallery, New York; and Masur Museum of Art, Monroe, LA, among others. His work can be found in the collections of the Whitney Museum of American Art, Buffalo AKG Art Museum, Block Museum of Art, and New Orleans Museum of Art, among others.



## ***Untitled "Stand Down", 2024***

Soft ground etching and freehand inking

36 x 28 1/2 inches

Edition of 10

**\$5,000 (unframed)**



MADE IN  
USA

STAND DOWN

# Andrew Schoultz

b. 1975, Milwaukee, WI

Andrew Schoultz, first a professional skateboarder, moved to San Francisco in 1998 and began his painting career with outdoor murals. He is known for his use of motifs such as the US dollar bill, antique etchings, and archaic war vessels. In his collaboration with Pace Editions, Schoultz's intricate line work translates cleanly to etching, while hand collaged details like the tree leaves featured in *Owl at Dusk* lend a vivid flare.

Schoultz received his BFA in Illustration from the Academy of Arts University in San Francisco, CA. His works are represented in important collections such as the Los Angeles County Museum (LACMA), the Berkeley Art Museum or the San Francisco Museum of Modern Art, CA.



## ***Owl at Dusk, 2023***

Etching and relief print with hand finishing  
37 1/2 x 28 3/4 inches  
**\$5,000 (framed)**





PACE PRINTS

536 WEST 22ND STREET  
NEW YORK, NY 10011

(212) 629-6100