

A close-up photograph of a person's mouth. The lips are coated in a vibrant, glossy red lipstick. In the center of the mouth, a white dental arch or retainer is visible, featuring several small, circular white elements. The background is a soft, out-of-focus pinkish-red hue.

# TWO PALMS

ART BASEL MIAMI BEACH 2024, BOOTH A6



Cecily Brown  
*Untitled*, 2023  
Monotype in pastel on Lanaquarelle  
36 7/8 x 47 inches  
CB1441  
\$105,000 framed

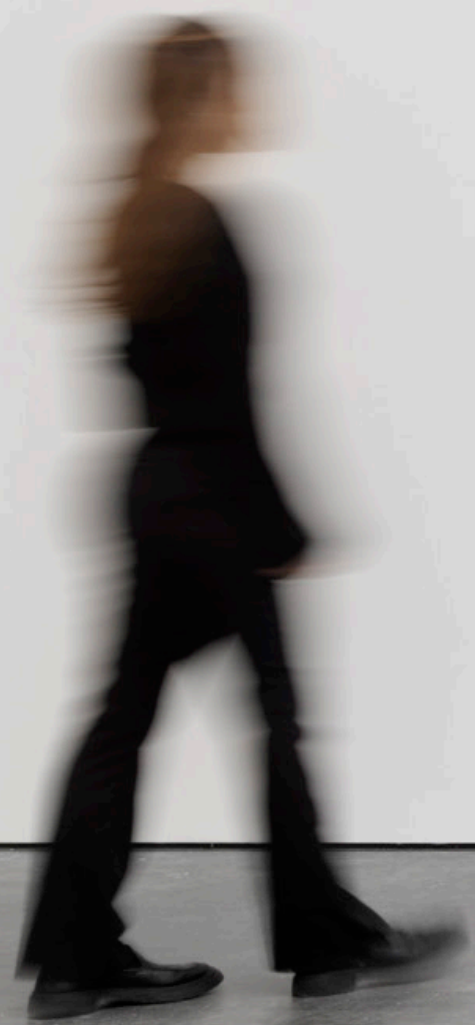
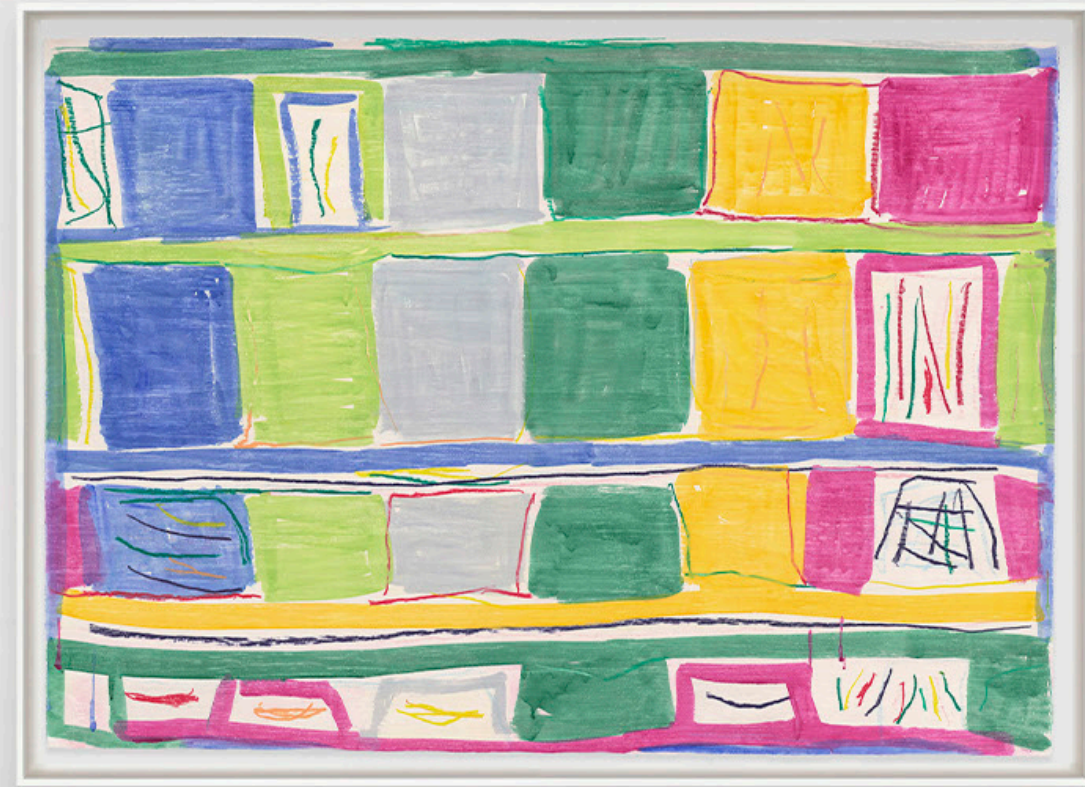


Ana Benaroya  
*Noctume No. 1*, 2024  
Monotype in watercolor and watercolor crayon  
in artist designed frame  
72 1/4 x 52 1/4 inches  
\$30,000 framed





Stanley Whitney  
*Untitled*, 2024  
Monotype in watercolor and crayon on  
Lanaquarelle paper  
51 x 71 inches  
SW1731  
\$85,000 framed





Marilyn Minter  
*Soft Spoken*, 2024  
Silkscreen in 24 colors on Lanaquarelle paper  
45 1/8 x 60 1/4 inches  
Edition of 40  
\$12,000 unframed



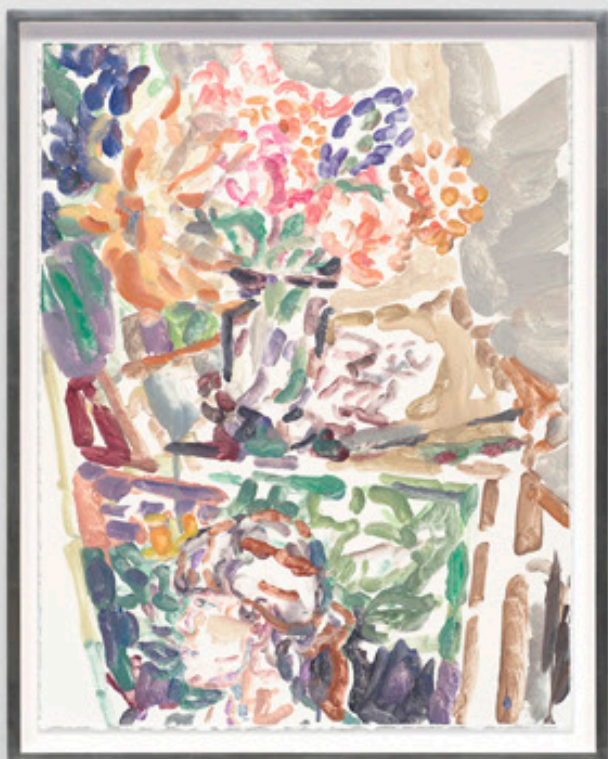
Tschabalala Self  
*Non-Perishable Tower*, 2023  
Unique cast and pigmented paper in artist designed frame  
52 3/4 x 42 1/4 x 4 1/2 inches  
\$45,000 framed





Elizabeth Peyton  
*Lara and Flowers October 2021, 2021*  
Monotype in oil on handmade paper  
27 x 21 3/4 inches  
\$105,000 framed







Katherine Bernhardt  
*Untitled*, 2024  
Monotype in watercolor on lanaquarelle paper  
63 x 51 inches  
KB1092  
\$45,000 framed

Mel Bochner  
*Amazing*, 2024  
Cast and pigmented paper  
40 x 26 1/4 x 3 3/8 inches  
MB7382  
\$35,000 framed



