

# NADA Miami 2024

**Matthew Chambers  
Anneke Eussen  
Brenda Mallory**

**December 3 - 7, 2024**

## VIP Preview:

Tuesday, December 3: 10am - 4pm  
Thursday, December 5: 10am - 11am

## Public Fair Hours:

Tuesday, December 3: 4pm - 7pm  
Wednesday, December 4: 11am - 7pm  
Thursday, December 5: 11am - 7pm  
Friday, December 6: 11am - 7pm  
Saturday, December 7: 11am - 6pm

## Location:

Ice Palace Studios  
1400 North Miami Ave  
Miami, FL 33136

**MARINARO**

# MARINARO



**Brenda Mallory**

*Of Seasons and Cycles, 2024*

Deconstructed thread spools, waxed cloth, and felt on wood panel

43 x 180 x 5 inches

109.2 x 457.2 x 12.7 cm

(Inventory #BMA112)

\$40,000



# MARINARO



# MARINARO



# MARINARO



**Brenda Mallory**

*Parceled Space, 2024*

Deconstructed thread spools and felt on wood panel

30 x 22 x 5 inches

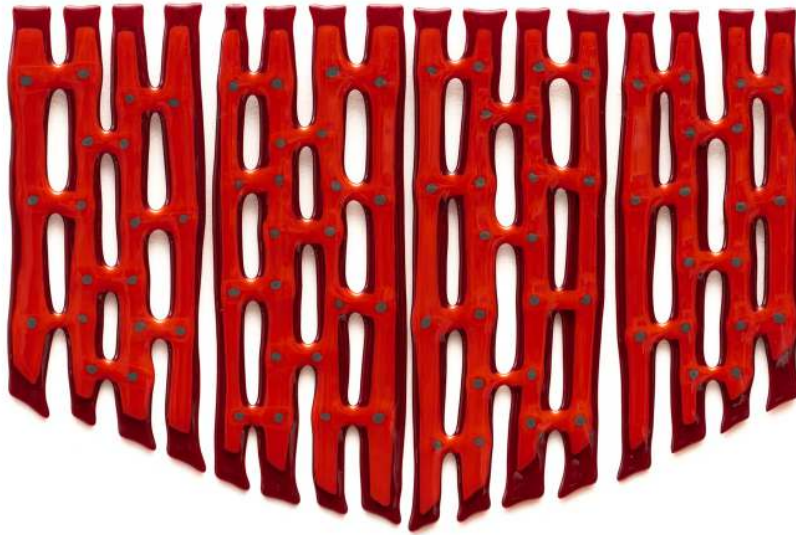
76.2 x 55.9 x 12.7 cm

(Inventory #BMA113)

\$9,500



# MARINARO



**Brenda Mallory**  
*Connections (Mantle)*, 2024  
Fused glass  
16.5 x 25 x 0.25 inches  
41.9 x 63.5 x .6 cm  
(Inventory #BMA114)  
\$7,500

# MARINARO



**Brenda Mallory**

*Endless Column Fused, 2024*

Fused glass

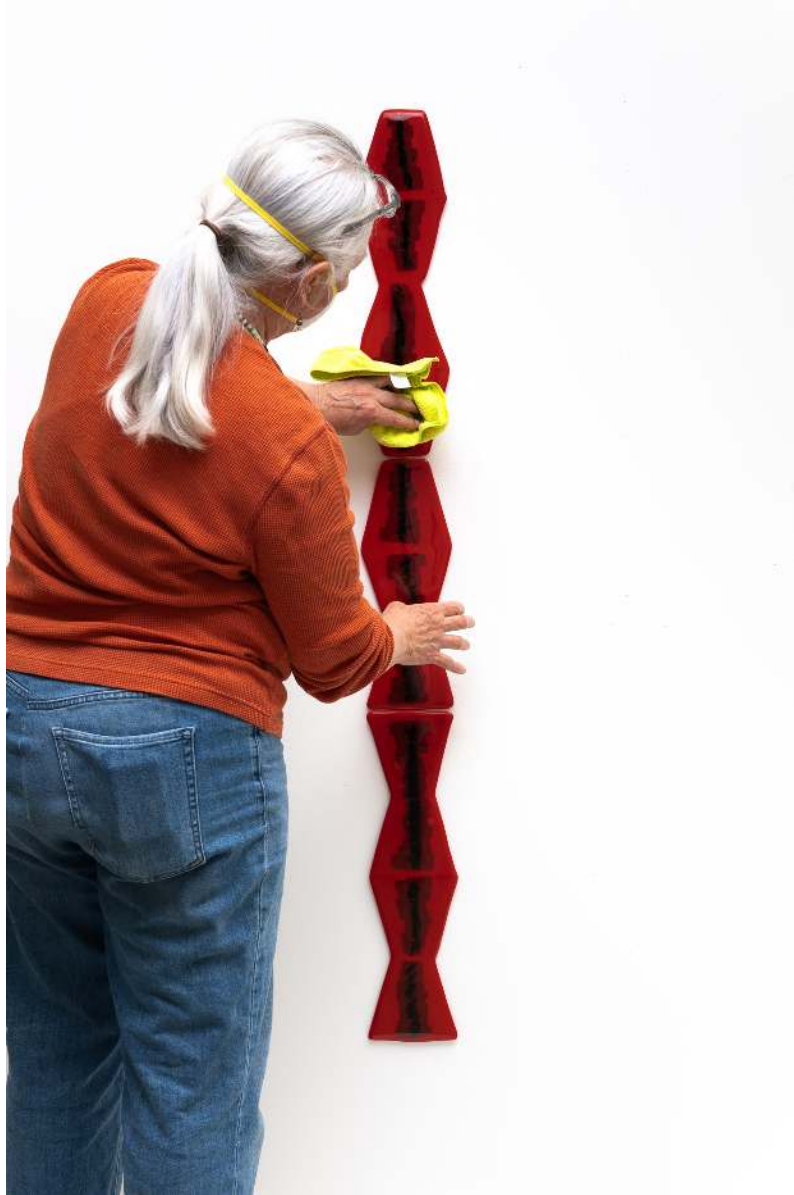
55 x 6 x 0.25 inches

139.7 x 15.2 x .6 cm

(Inventory #BMA115)

\$7,500

# MARINARO

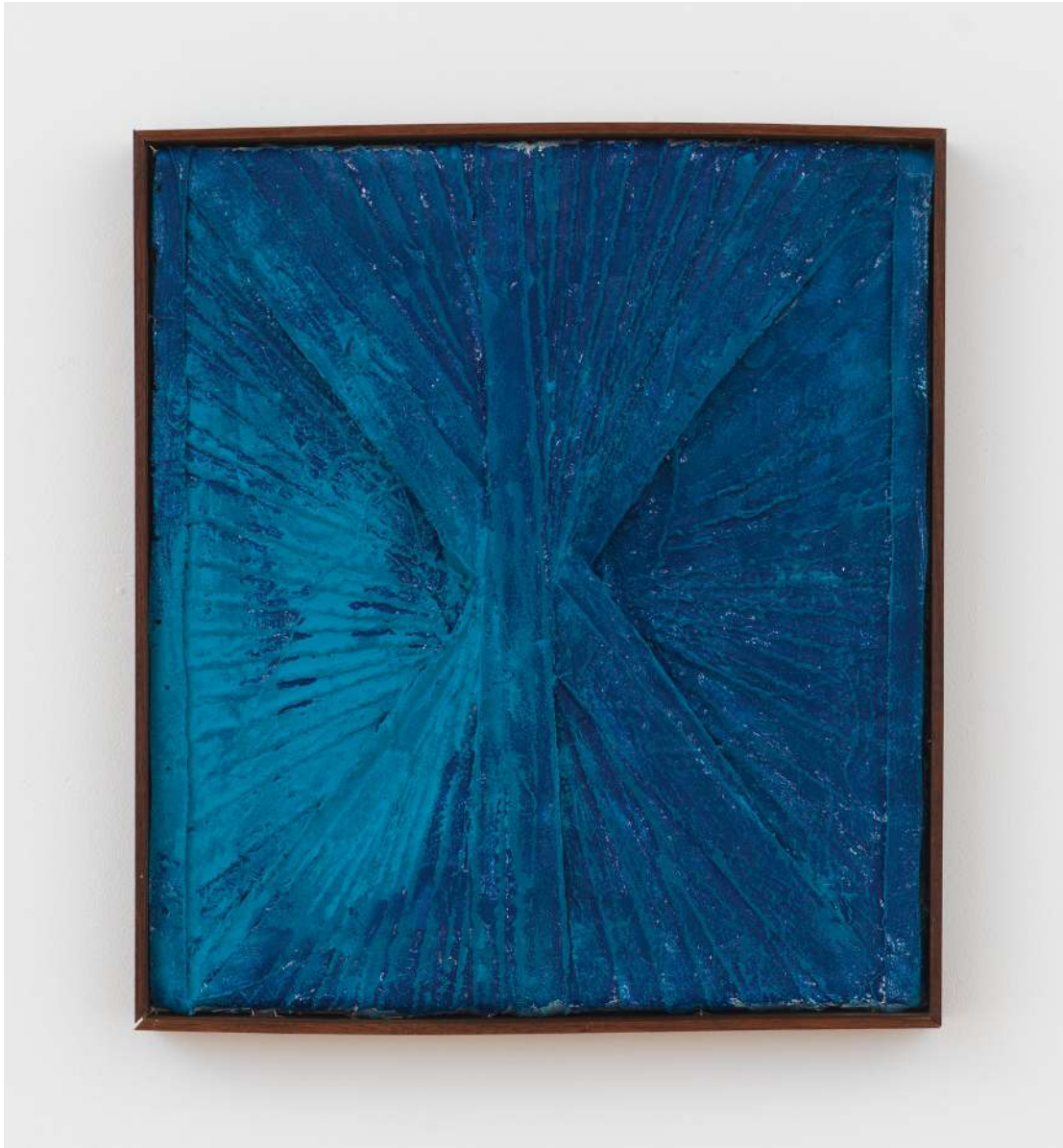




# MARINARO



# MARINARO



**Matthew Chambers**

*They mainly communicate through "meetings", 2024*

Oil, acrylic, latex, enamel and nylon fiber on canvas in artist's walnut frame

21 x 19 inches

53.3 x 48.3 cm

(Inventory #MC1087)

\$5,000

# MARINARO



**Matthew Chambers**

*A true strike denies my body and sense of humor from an audience that has never shown any kind of commitment, 2024*

Oil, acrylic, latex, enamel and nylon fiber on canvas in artist's walnut frame

25 x 19 inches

63.5 x 48.3 cm

(Inventory #MC1088)

\$5,000



# MARINARO



**Matthew Chambers**

*I didn't remember committing to that look, w/o a doubt the mirror was biased,*  
2024

Oil, acrylic, latex, enamel and nylon fiber on canvas in artist's walnut frame

25 x 19 inches

63.5 x 48.3 cm

(Inventory #MC1089)

\$5,000

# MARINARO



**Matthew Chambers**

*When it's bad and you're ready to ruin everyone else's day, 2024*

Oil, acrylic, latex, enamel and nylon fiber on canvas in artist's walnut frame

25 x 19 inches

63.5 x 48.3 cm

(Inventory #MC1090)

\$5,000

# MARINARO



**Matthew Chambers**

*It's only fun when you are in disguise as a garbage man when people ask you why you smell like the dump, 2024*

Oil, acrylic, latex, enamel and nylon fiber on canvas in artist's walnut frame

25 x 19 inches

63.5 x 48.3 cm

(Inventory #MC1091)

\$5,000



# MARINARO



**Matthew Chambers**

*Bored by history & terrified by the present, 2024*

Oil, acrylic, latex, enamel and nylon fiber on canvas in artist's walnut frame

25 x 19 inches

63.5 x 48.3 cm

(Inventory #MC1092)

\$5,000

# MARINARO



**Matthew Chambers**

*The past is the biggest grey area of all, 2024*

Oil, acrylic, latex, enamel and nylon fiber on canvas in artist's walnut frame

25 x 19 inches

63.5 x 48.3 cm

(Inventory #MC1093)

\$5,000

# MARINARO



**Matthew Chambers**

*It was an awful smell that he kept saying was a product of his rugged individualism* , 2024

Oil, acrylic, latex, enamel and nylon fiber on canvas in artist's walnut frame

25 x 19 inches

63.5 x 48.3 cm

(Inventory #MC1094)

\$5,000



# MARINARO



**Matthew Chambers**

*I left my business and household concerns behind, 2024*

Oil, acrylic, latex, enamel and nylon fiber on canvas

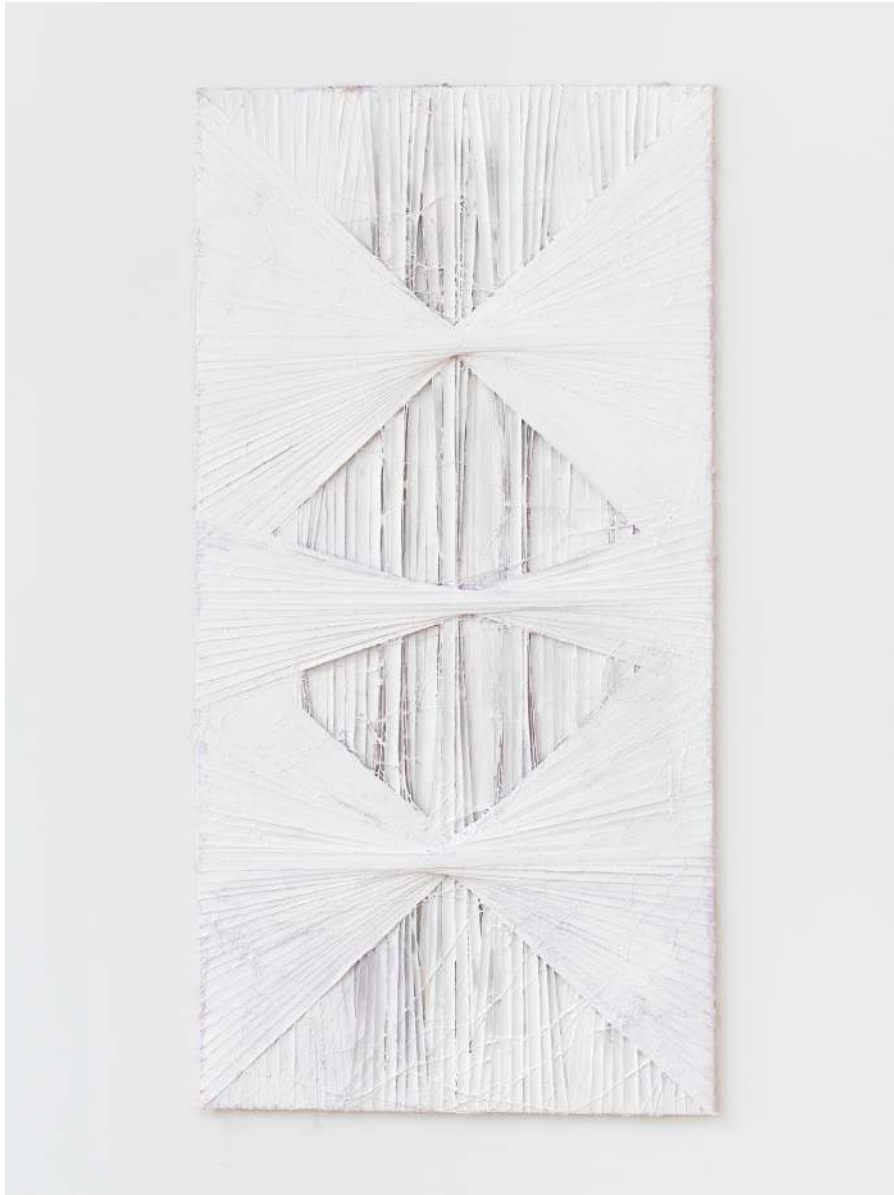
96 x 48 inches

243.8 x 121.9 cm

(Inventory #MC1095)

\$17,000

# MARINARO



**Matthew Chambers**

*That mistake that two people make together, 2024*

Oil, acrylic, latex, enamel and nylon fiber on canvas

96 x 48 inches

243.8 x 121.9 cm

(Inventory #MC1096)

\$17,000

# MARINARO



**Anneke Eussen**

*On Different Days 06, 2020*

Time-stained car panes, metal hooks, mounted on wood, and plexiglass frame

20.08 x 20.08 inches

51 x 51 cm

(Inventory #AE128)

\$5,000



# MARINARO



**Anneke Eussen**

*On Different Days 07, 2020*

Time-stained car panes, metal hooks, mounted on wood, and plexiglass frame

19.29 x 19.69 x 1.97 inches

49 x 50 x 5 cm

(Inventory #AE129)

\$5,000

# MARINARO



**Anneke Eussen**  
*Perfect day 01, 2022*  
Antique glass, nails  
13.78 x 7.87 inches  
35 x 20 cm  
(Inventory #AE168)  
\$2,800

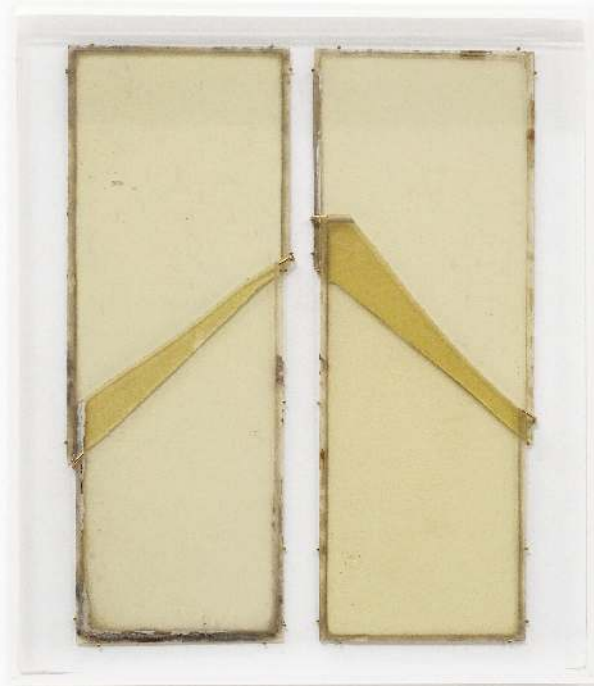
# MARINARO



**Anneke Eussen**  
*Perfect day 02, 2022*  
Antique glass, nails  
13.78 x 7.87 inches  
35 x 20 cm  
(Inventory #AE169)  
\$2,800



# MARINARO



**Anneke Eussen**  
*Reconnected 02, 2022*  
Antique glass, hooks  
15.16 x 15.16 inches  
38.5 x 33.5 cm  
(Inventory #AE171)  
\$3,200

# MARINARO



**Anneke Eussen**  
*Reconnected 04, 2022*  
Antique glass, hooks  
15.16 x 13.19 inches  
38.5 x 33.5 cm  
(Inventory #AE173)  
\$3,200