

# GALERIE KARSTEN GREVE



**John Chamberlain**

*Ramfeezled Shiggers*

1991

Painted and chromium plated steel

269.2 x 182.9 x 139.7 cm / 106 x 72 x 55 in

JC/S 58

ST. MORITZ

KÖLN

PARIS

# GALERIE KARSTEN GREVE



**John Chamberlain**

*Bloodydrivetrain*

2007

Painted and chromium plated steel

99 x 144.8 x 116.8 cm / 39 x 57 x 46 in

DB #0569

Cat. Galerie Karsten Greve 2008, p. 256

JC/S 17

ST. MORITZ

KÖLN

PARIS

# GALERIE KARSTEN GREVE



**Piero Manzoni**

*Achrome*

1962

Pebble stones and Kaolin on canvas

74 x 56 cm / 29 1/4 x 22 in

Frame: 88.5 x 70.2 x 7.3 cm / 34 3/4 x 27 2/3 x 2 3/4 in

verso middle on the stretcher signed and dated: *Piero Manzoni 59*

Cat. Rais. Celant 1975 #7s / Cat. Rais. Battino und Palazzoli 1991 #891 BM / Cat. Rais. Celant 2004, #1033

PM/M 5

ST. MORITZ

KÖLN

PARIS

# GALERIE KARSTEN GREVE



**Piero Manzoni**

*Achrome*

1961 - 1962

Cotton balls

43 x 31 cm / 17 x 12 1/4 in

Frame: 45.3 x 34.2 x 5.2 cm / 17 3/4 x 13 1/2 x 2 in

verso middle signed and dated: *Piero Manzoni '61*

Cat. Rais. Celant 1975 #9 bc / Cat. Rais. Battino/Palazzoli 1991 #771 / Cat. Rais. Celant 2004 #967

Cat. Galerie Karsten Greve 1992, p. 81

Cat. Galerie Karsten Greve 2009, p. 83

PM/St 3

ST. MORITZ

KÖLN

PARIS

# GALERIE KARSTEN GREVE



**Jannis Kounellis**

*Untitled*

2000

1 hospital bed, 1 steel bodies, 2 steel plates, 6 woolen plaids

Cat. Prato 2001, p. 131

Cat. Galerie Karsten Greve 2007, p. 197 – 205

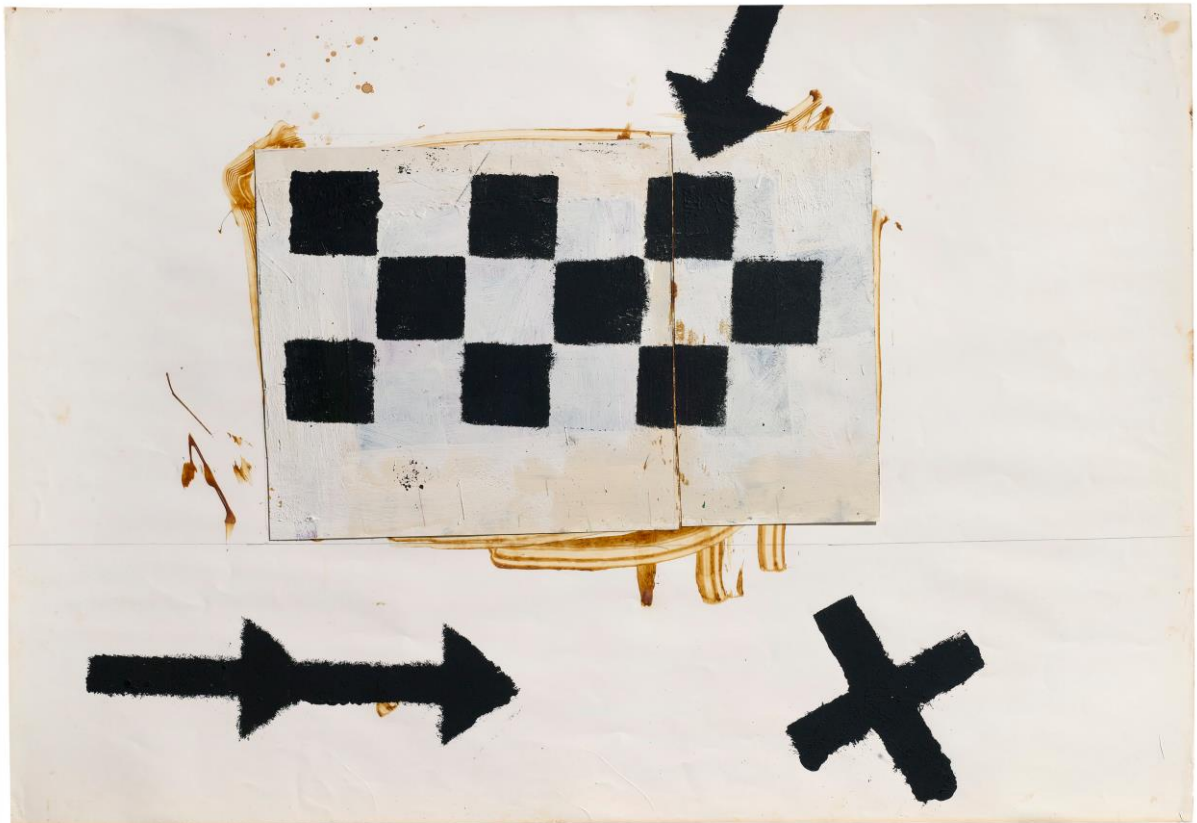
JK/S 8

ST. MORITZ

KÖLN

PARIS

# GALERIE KARSTEN GREVE



**Jannis Kounellis**

*Untitled*

1961

Tempera, pencil and paper collage on paper

69.1 x 99.7 cm / 27 1/4 x 39 1/4 in

Frame: 79.1 x 109.7 x 5 cm / 31 1/4 x 43 1/4 x 2 in

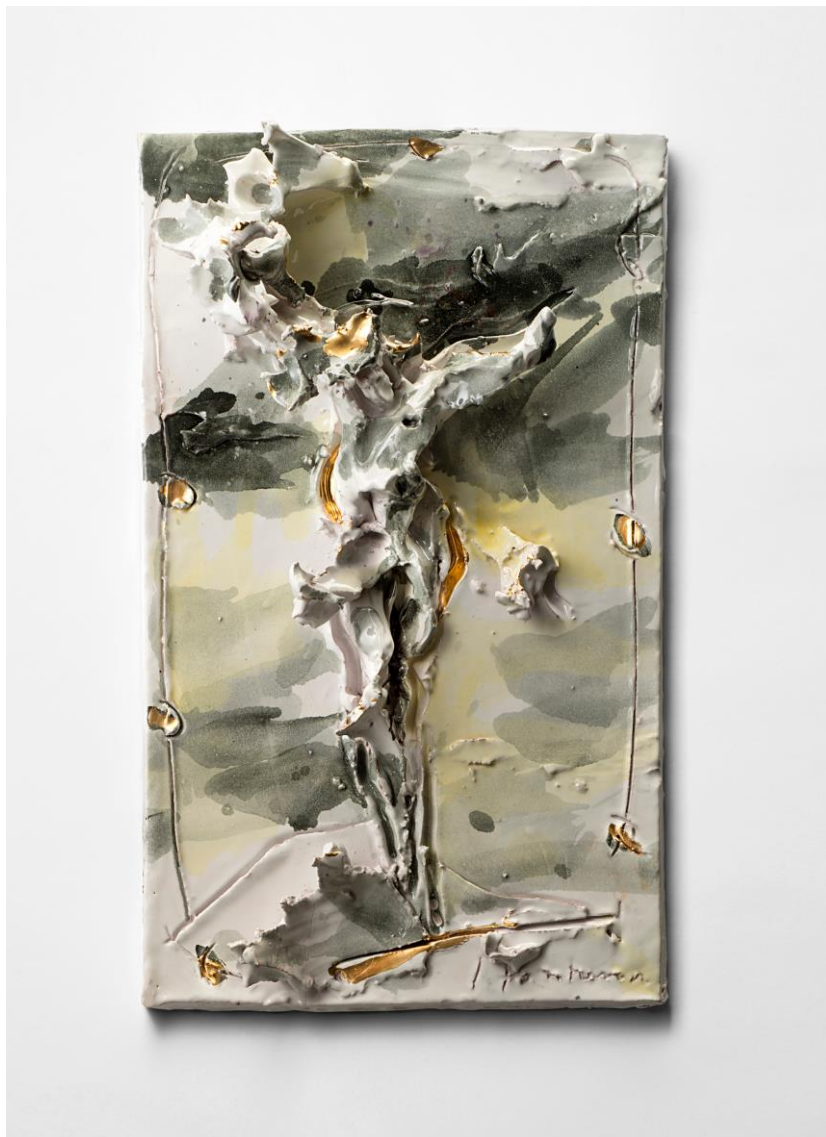
JK/P 3

ST. MORITZ

KÖLN

PARIS

# GALERIE KARSTEN GREVE



**Lucio Fontana**

*Cristo*

1959 (1955 – 1956)

Glazed ceramics

42.5 x 26 x 12.5 cm / 16 3/4 x 10 1/4 x 5 in

recto lower right signed: *L Fontana*

Cat. Rais. Barbero 2022, Vol. I, #59 FFC 6

Archivio Fontana #4156/67

LF/S 103

ST. MORITZ

KÖLN

PARIS

# GALERIE KARSTEN GREVE



**Lucio Fontana**

*Concetto Spaziale (Vaso)*

1958

Painted terracotta

Höhe: 23.5 cm / 9 1/4 in

Ø 13.5 cm / 5 1/3 in

signed and dated: *L Fontana 58*

Cat. Rais. Barbero 2022, Vol. II, #58 SPC 38

Archivio Fontana #4156/18

Cat. Galerie Karsten Greve 2012, p. 229 - 231

LF/S 34

ST. MORITZ

KÖLN

PARIS



# GALERIE KARSTEN GREVE



**Louise Bourgeois**

*Untitled*

2002

Fabric and stainless steel

180.3 x 25.4 x 30.4 cm / 71 x 10 x 12 in

on the base signed: *LB*

BOUR-5440

LB/S 28

ST. MORITZ

KÖLN

PARIS

# GALERIE KARSTEN GREVE



**Louise Bourgeois**

*Untitled (Calme Toi)*

2000

Fabric and stainless steel

156.2 x 30.4 x 30.4 cm / 61 1/2 x 12 x 12 in

on the base signed: *LB* and stitched titled on the top cushion: *Calme Toi*

BOUR-10549

LB/S 61

ST. MORITZ

KÖLN

PARIS

# GALERIE KARSTEN GREVE



**Cy Twombly**

*Muses*

1963

Oil, wax crayon, pencil and color pencil on canvas

70 x 60 cm / 27 1/2 x 23 2/3 in

Frame: 95.2 x 84 x 8 cm / 37 1/2 x 33 x 3 1/4 in

recto middle titled: *MUSES*; recto lower middle signed and inscribed: *Cy Twombly Roma*

Cat. Rais. Bastian 2018, Vol. VII Addendum, #28

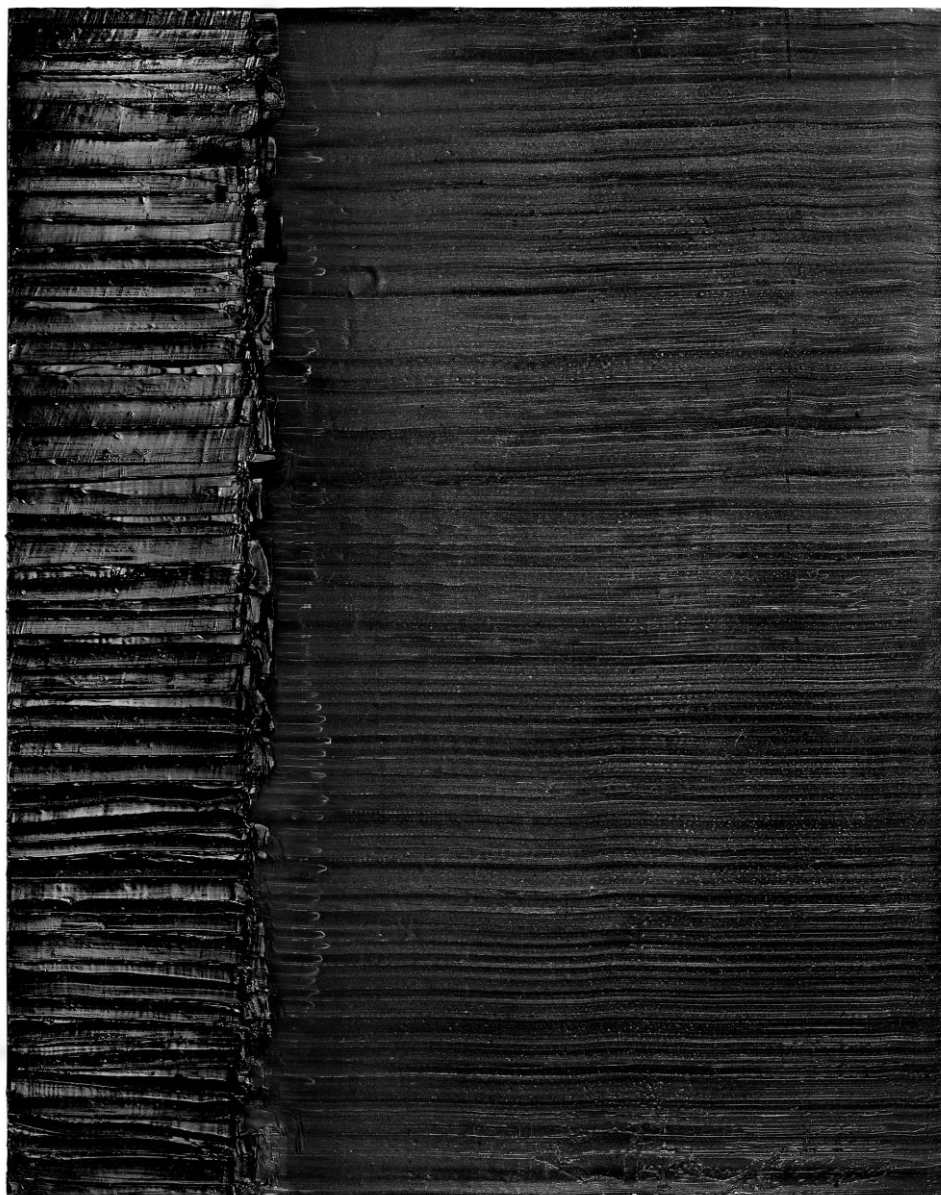
CT/M 4

ST. MORITZ

KÖLN

PARIS

# GALERIE KARSTEN GREVE



**Pierre Soulages**

*Peinture, 201 x 159 cm, 22 juillet 2013*

2013

Acrylic on canvas

201 x 159 x 7 cm / 79 1/4 x 62 2/3 x 2 3/4 in

Frame: 229.4 x 187.2 x 11.5 cm / 90 1/3 x 73 2/3 x 4 1/2 in

verso upper right signed, titled and dated: *SOULAGES „peinture 202 x 159 cm 22 07 2013“*

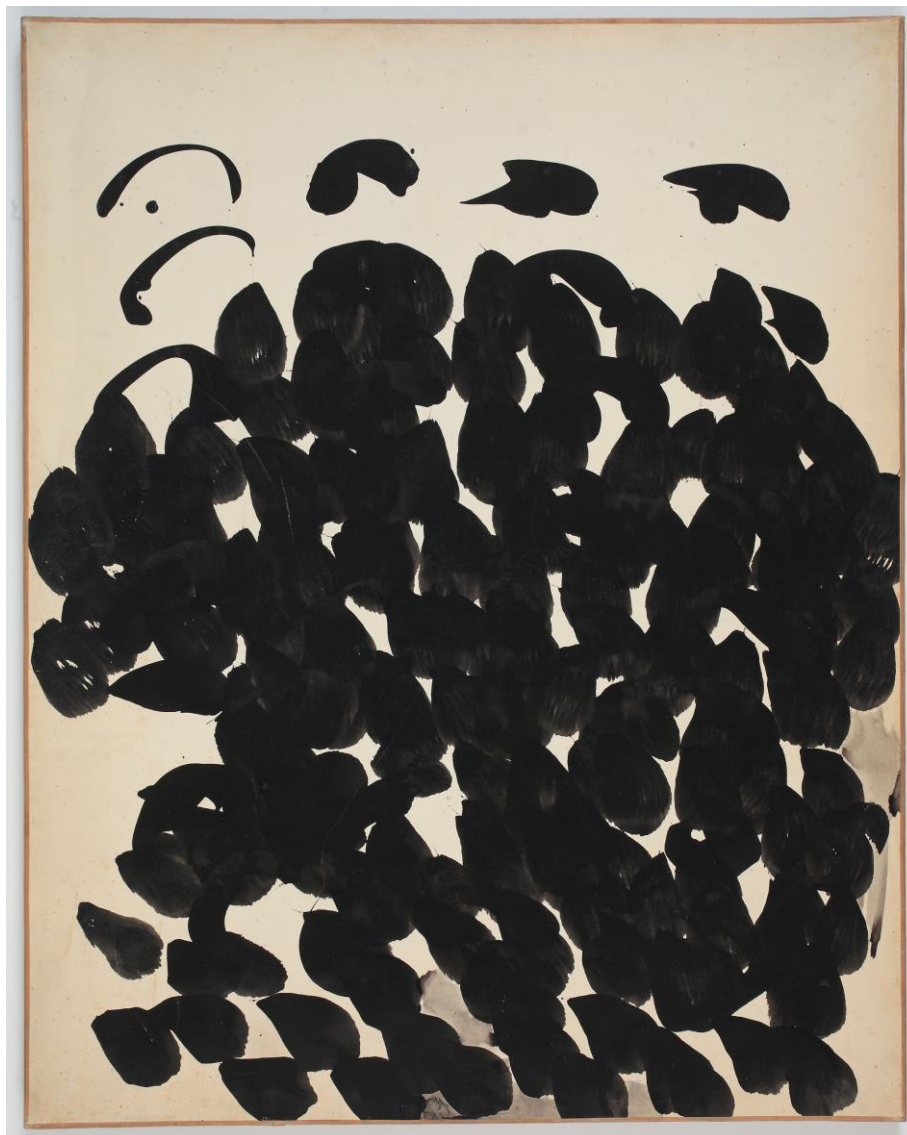
PSou/M 70

ST. MORITZ

KÖLN

PARIS

# GALERIE KARSTEN GREVE



**Pierrette Bloch**

*Untitled*

1972

Ink on paper on stretchers

62 x 52 cm / 24 1/2 x 20 1/2 in

Frame: 79.5 x 65.5 x 6 cm / 31 1/3 x 25 3/4 x 2 1/3 in

No. 1214

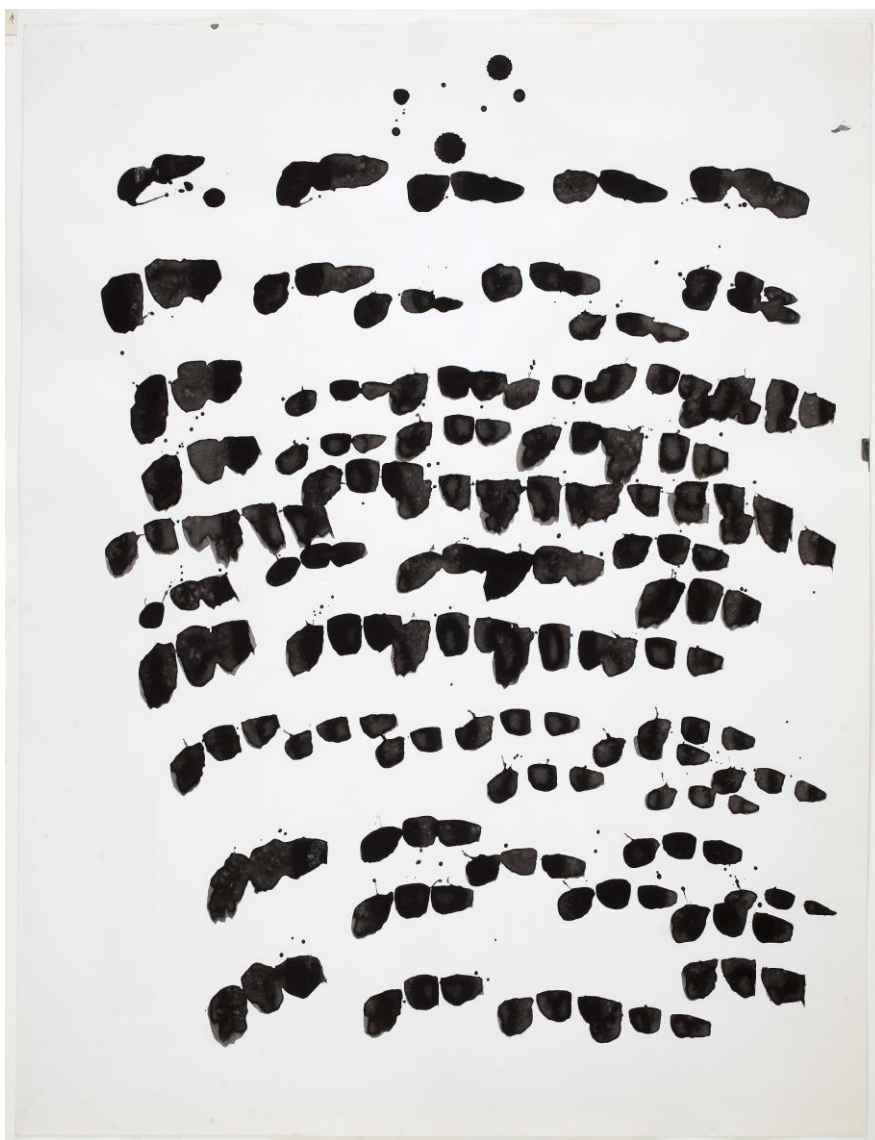
PB/P 372

ST. MORITZ

KÖLN

PARIS

# GALERIE KARSTEN GREVE



**Pierrette Bloch**

*Untitled*

ca. 1973

Ink on paper

65 x 50 cm / 25 2/3 x 19 2/3 in

Frame: 77.5 x 62.5 x 3.5 cm / 30 1/2 x 24 2/3 x 1 1/3 in

No. 1269

PB/P 377

ST. MORITZ

KÖLN

PARIS

# GALERIE KARSTEN GREVE



**Joel Shapiro**

*Untitled*

2015

Bronze, Unique

40 x 44.5 x 28.3 cm / 15 3/4 x 17 1/2 x 11 1/4 in

lower signed and dated: *Shapiro 2015*

JS 2192

JS/S 73

ST. MORITZ

KÖLN

PARIS