

An abstract painting with three main vertical sections. The left section is a dark, textured red with some green and blue undertones. The middle section is a bright, solid orange. The right section is a deep, textured blue. The brushstrokes are visible throughout, giving it a dynamic, layered appearance.

LEHMANN MAUPIN

Art Basel Paris
Booth C35
October 18 – 20, 2024
Grand Palais

NEW YORK SEUL LONDON

lehmannmaupin.com

Art Basel Paris
Booth C35
October 18 – 20, 2024
Grand Palais
3 avenue du Général Eisenhower
75008, Paris, France

Lehmann Maupin is pleased to announce the gallery's inaugural participation in Art Basel Paris. For the gallery's debut presentation at the fair, Lehmann Maupin will present new and recent works by artists with concurrent and upcoming institutional programming around the world—from the Louvre in Paris and the Tate Modern in London, to the Brooklyn Museum in New York and SITE Santa Fe in New Mexico—including works by **Kader Attia**, **Teresita Fernández**, **Liza Lou**, **Catherine Opie**, **OSGEMEOS**, **Calida Rawles**, **Do Ho Suh**, and **Cecilia Vicuña**. The presentation will also foreground historic late 20th and early 21st century works, including a 1980 painting by **McArthur Binion** and a 2001 painting by **David Salle**. Notably, the booth will also feature a focused section of both historic and recent works by Korean artists, including by **Kim Yun Shin**, **Sung Neung Kyung**, and **Do Ho Suh**.

Highlights include works by **Loriel Beltrán**, **Billy Childish**, **Mandy El-Sayegh**, **Nicholas Hlobo**, **Arcmanoro Niles**, **Tammy Nguyen**, **Alex Prager**, and **Robin Rhode**. Lehmann Maupin will also participate in Art Basel Paris's new *Oh La La!* initiative with a new sculpture by **Erwin Wurm**, who has a concurrent retrospective at The Albertina Museum in Vienna, Austria, on view through March 9, 2025.

Additional highlights at the fair include a large-scale photograph from **Catherine Opie's** new *Norwegian Mountain* series; the artist is currently the subject of a major solo exhibition at the Museum of Art of São Paulo, Brazil, on view through October 27. The presentation also includes a painting by Brazilian artistic duo **OSGEMEOS**, titled *Cultivando os Sonhos (Cultivating Dreams)* (2023); the survey exhibition *OSGEMEOS: Endless Story* is currently on view at the Hirshhorn Museum and Sculpture Garden in Washington, DC through August 3, 2025. **Cecilia Vicuña's** new painting *Hombre tigre* (2024) will debut at the booth; Vicuña's solo exhibition *La Migranta: Blue Nipple*, which will feature a series of new paintings and a major installation, opens November 21 at Lehmann Maupin New York. Finally, the presentation includes a new textile silk work exploring domesticity by **Billie Zangewa**, titled *a day in the life of a gourmand* (2024); the traveling solo exhibition *Billie Zangewa: Field of Dreams* opens at the Frost Art Museum in Miami, FL on November 23.

To view additional images and information about the artworks, please [CLICK HERE](#).



Anchoring the booth is a painting from the early 21st century by New York-based artist David Salle, titled *Ice Flow II* (2001). Salle combines popular or commercial imagery with images made from direct observation and a range of art historical references to create a personal pictorial language. His work features a sophisticated and highly intuitive approach to composition—one that suggests new associations and relationships between familiar (or unfamiliar) subjects. Salle's multi-layered works do not rely on subject matter alone; however, his paintings pack an immediate formal impact and present multiple points of entry for the viewer. Built to draw the eye through and across the picture plane, they reward close looking and prolonged contemplation.

DAVID SALLE

Ice Flow II

2001. Oil and acrylic on canvas and linen

72 x 108 inches (182.9 x 274.3 cm)

LM3512

\$375,000 USD plus applicable VAT



DAVID SALLE

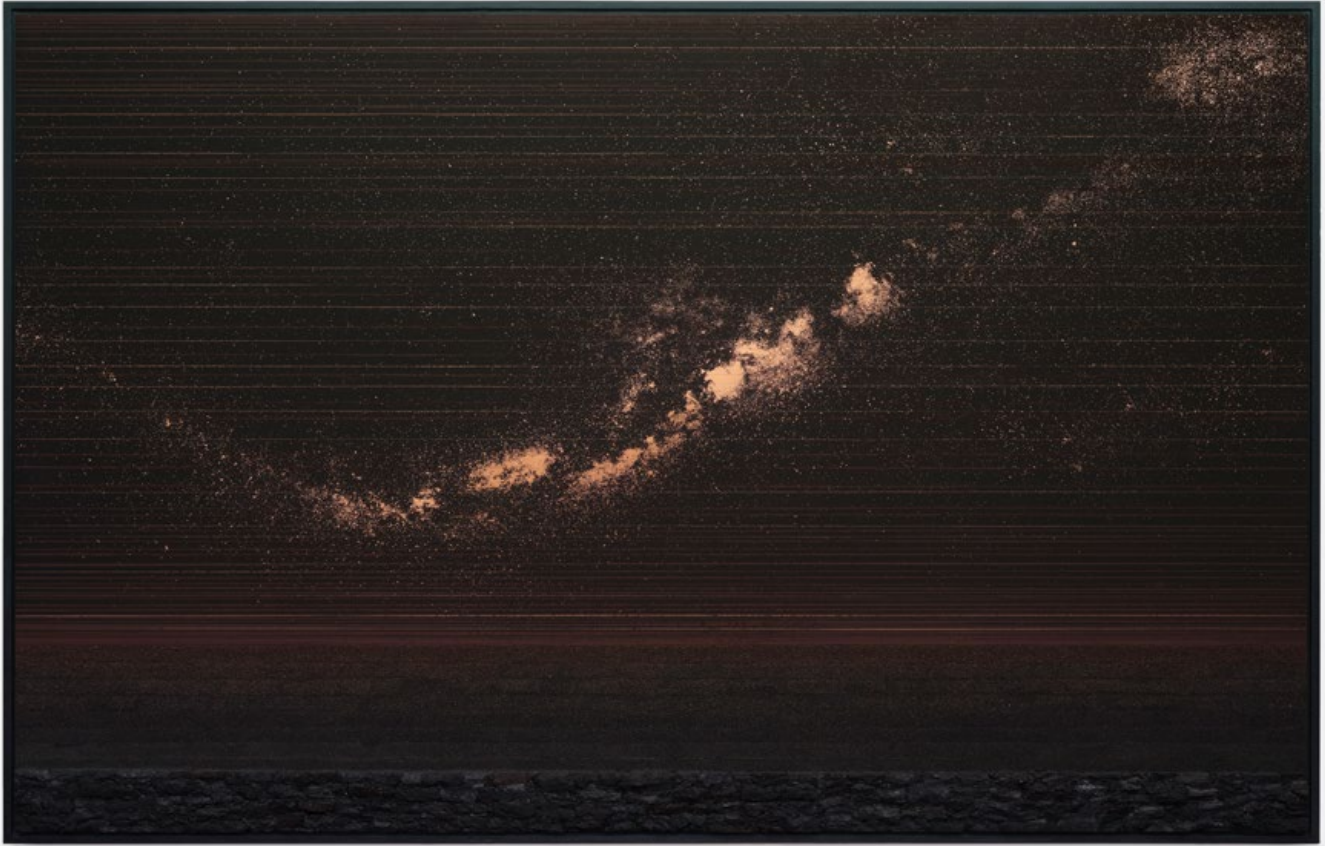
New Pastoral #15

2024. Oil, acrylic, and flashe on archival UV print on linen

64 3/4 x 96 3/4 x 2 3/4 inches (164.46 x 245.74 x 6.98 cm)

LM37042

\$375,000 USD plus applicable VAT



Lehmann Maupin's presentation will also include Teresita Fernández's *Soil Horizon 8* (2024) from her series of copper panels with luminous, immersive horizon lines. The bottom of the panel is sculpted from dimensional charcoal fragments; above this dense ground, Fernández creates an intricate stippled effect that alternately obscures and reveals the warm glow of the copper beneath, creating atmospheric skiescapes. In these works, the artist envisions numinous landscapes that propose a more expansive idea of place—from the ancient, historical, and subterranean, to the futuristic and celestial. Concurrent to the fair, the artist's work is on view in the exhibition *Teresita Fernández / Robert Smithson* at SITE Santa Fe through October 28.

TERESITA FERNÁNDEZ

Soil Horizon 8

2024. Solid charcoal, sand, and mixed media on copper panel

49 1/2 x 73 1/2 x 3 inches (125.7 x 186.7 x 7.6 cm)

LM36987

\$300,000 USD plus applicable VAT



TERESITA FERNÁNDEZ

Bardo 1

2024. Stone, plaster, and mixed media

9 x 5 3/4 x 1 inches (22.9 x 14.6 x 2.5 cm)

LM37059

\$35,000 USD plus applicable VAT



TERESITA FERNÁNDEZ

Bardo 4

2024. Stone, plaster, and mixed media

6 3/4 x 6 7/8 x 1 inches (17.1 x 17.5 x 2.5 cm)

LM37062

\$35,000 USD plus applicable VAT



TERESITA FERNÁNDEZ

Bardo 5

2024. Stone, plaster, and mixed media

8 1/8 x 6 1/2 x 1 inches (20.6 x 16.5 x 2.5 cm)

LM37063

\$35,000 USD plus applicable VAT

Two works (both 2023) from Kader Attia's acclaimed *Mirrors and Masks* series will be included in the presentation, as well as the sculpture *Untitled (Big Bang)* (2024), which was recently included in his solo exhibition *Descent into Paradise* at MOCO in Montpellier, France. Attia is a connoisseur and collector of tribal art and traditional African objects and his *Mirrors and Masks* series creates interventions into these works through fragmented mirrors. Exploring the ways in which colonial domination forces the reconstruction of individual and cultural identities, the mask confronts viewers with their own fragmented self-portrait. Attia is currently an artist-in-residence at the Louvre Museum in Paris, where he has a studio on-site through June 2025 as part of the museum's *Guests of the Louvre* program.

KADER ATTIA

Mirrors and Masks

2023. Wooden mask, mirrors, pigment, glue, metal stand
15 x 7 7/8 x 6 inches (38 x 20 x 15 cm)

Base: 9 27/32 x 9 27/32 x 1 3/16 inches (25 x 25 x 3 cm)

Stand: 63 inches (160 cm)

LM36171

€90,000 EUR plus applicable VAT





KADER ATTIA

Mirrors and Masks

2023. Wooden mask, mirrors, pigment, glue, metal stand

11 13/16 x 7 7/8 x 6 11/16 inches (30 x 20 x 17 cm)

Base: 9 27/32 x 9 27/32 x 1 3/16 inches (25 x 25 x 3 cm)

Stand: 63 inches (160 cm)

LM36173

€90,000 EUR plus applicable VAT



KADER ATTIA

Untitled (Big Bang)

2024. Sculpture, mirror-polished stainless steel

69 9/32 x 69 9/32 x 5 1/2 inches (176 x 176 x 14 cm)

LM37448

€100,000 EUR plus applicable VAT



A new painting by Los Angeles-based artist Calida Rawles will debut at the booth. In this new work, the artist depicts a male figure immersed in rippled water; his body is visibly covered in tattoos yet his face is not fully legible. Known for merging hyper-realism and poetic abstraction, Rawles employs water as both a vital, organic material and a historically charged space. In her compositions, Black bodies are submerged in exquisitely rendered submarine landscapes of bubbles,

ripples, refracted light, and expanses of blue. For the artist, water signifies both physical and spiritual healing as well as historical trauma and racial exclusion. She uses this complicated duality as a means to envision a new space for Black healing and reimagine her subjects beyond racialized tropes. Rawles' first solo museum exhibition *Away with the Tides* is currently on view at the Pérez Art Museum Miami in Florida through February 23, 2025.

CALIDA RAWLES

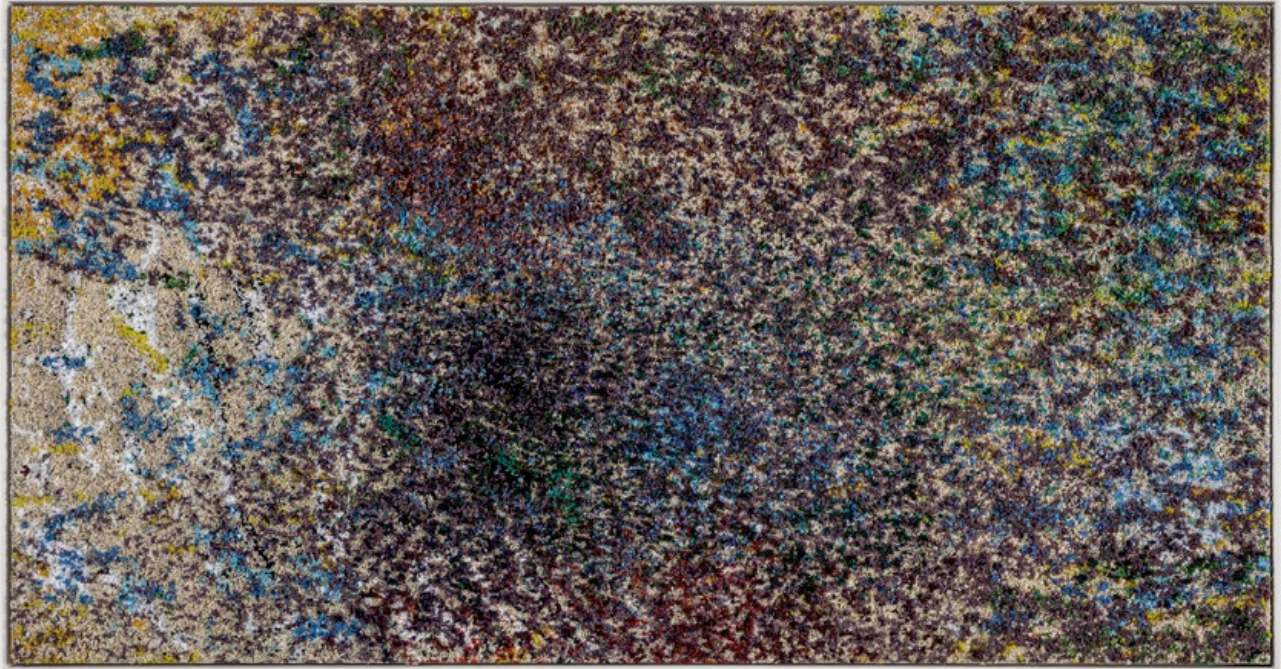
Seek and Destroy

2024. Acrylic on canvas

48 x 36 inches (121.9 x 91.4 cm)

LM37073

Please inquire



On the heels of her solo exhibition *Painting* at Lehmann Maupin New York, which debuted an all-new body of work, as well as the permanent installation of *Trailer* (1998–2000) at the Brooklyn Museum in New York, a new beaded work on canvas by Los Angeles-based artist Liza Lou titled *The Valley* (2024) will be exhibited at the fair. In Lou’s recent work, she renders what appear as quick, painterly gestures in grain-by-grain minutiae. At close range, the tiny, individual 3-dimensional pieces of factory-made color jostle each other, resulting in micro explosions that register as surprise, offering a new take on American Abstract painting. *The Valley* will be included in the upcoming exhibition *Glorious Nothings: Flowers at Chatsworth*, opening in Spring 2025 at the Chatsworth House in Bakewell, United Kingdom.

LIZA LOU

The Valley

2024. Glass beads on wood

35 7/8 x 67 7/8 x 2 inches (91.12 x 172.4 x 5.08 cm)

LM37430

\$325,000 USD plus applicable VAT



The presentation will also include a focused selection of works by gallery artists from South Korea. Recent works made from thread embedded in cotton paper by Do Ho Suh will be on view; next year, Suh will have a major survey exhibition at the Tate Modern in London, opening in May 2025. Additionally, an early example of Do Ho Suh's large-scale fabric sculpture, *Bathroom, 348 West 22nd St., Apt. A, New York, NY 10011* (2003), is currently included in the group exhibition *Pop Forever, Tom Wesselmann &...* at the Fondation Louis Vuitton in Paris, France, on view through February 24, 2025.

DO HO SUH

Self Portrait

2023. Thread embedded in cotton paper

20 7/8 x 27 9/16 inches (53 x 70 cm)

LM37615

\$50,000 USD plus applicable VAT



DO HO SUH

Self Portrait

2023. Thread embedded in cotton paper

20 7/8 x 27 9/16 inches (53 x 70 cm)

LM37616

\$50,000 USD plus applicable VAT



DO HO SUH

Self Portrait

2023. Thread embedded in cotton paper

26 27/32 x 19 3/4 x 1 25/32 inches (68.2 x 50.2 x 4.5 cm)

LM37614

\$45,000 USD plus applicable VAT

DO HO SUH

Self Portrait

2023. Thread embedded in cotton paper

37 13/16 x 29 17/32 inches (96 x 75 cm)

LM37619

\$70,000 USD plus applicable VAT



DO HO SUH

Self Portrait

2023. Thread embedded in cotton paper

20 7/8 x 27 9/16 inches (53 x 70 cm)

LM37617

\$50,000 USD plus applicable VAT



DO HO SUH

Self Portrait

2023. Thread embedded in cotton paper

29 17/32 x 37 13/16 inches (75 x 96 cm)

LM37618

\$60,000 USD plus applicable VAT



DO HO SUH

Body Building

2023. Thread embedded in cotton paper

31 3/32 x 23 7/32 inches (79 x 59 cm)

LM37620

\$60,000 USD plus applicable VAT

DO HO SUH

Body Building

2023. Thread embedded in cotton paper

27 5/32 x 20 9/32 inches (69 x 51.5 cm)

LM37621

\$50,000 USD plus applicable VAT



A historic work from Sung Neung Kyung's acclaimed *Venue* series, *Venue: trail 2* (1985), will be included in the presentation; concurrent to the fair, Sung's debut solo exhibition outside of Korea at Lehmann Maupin New York is on view through November 9.

SUNG NEUNG KYUNG

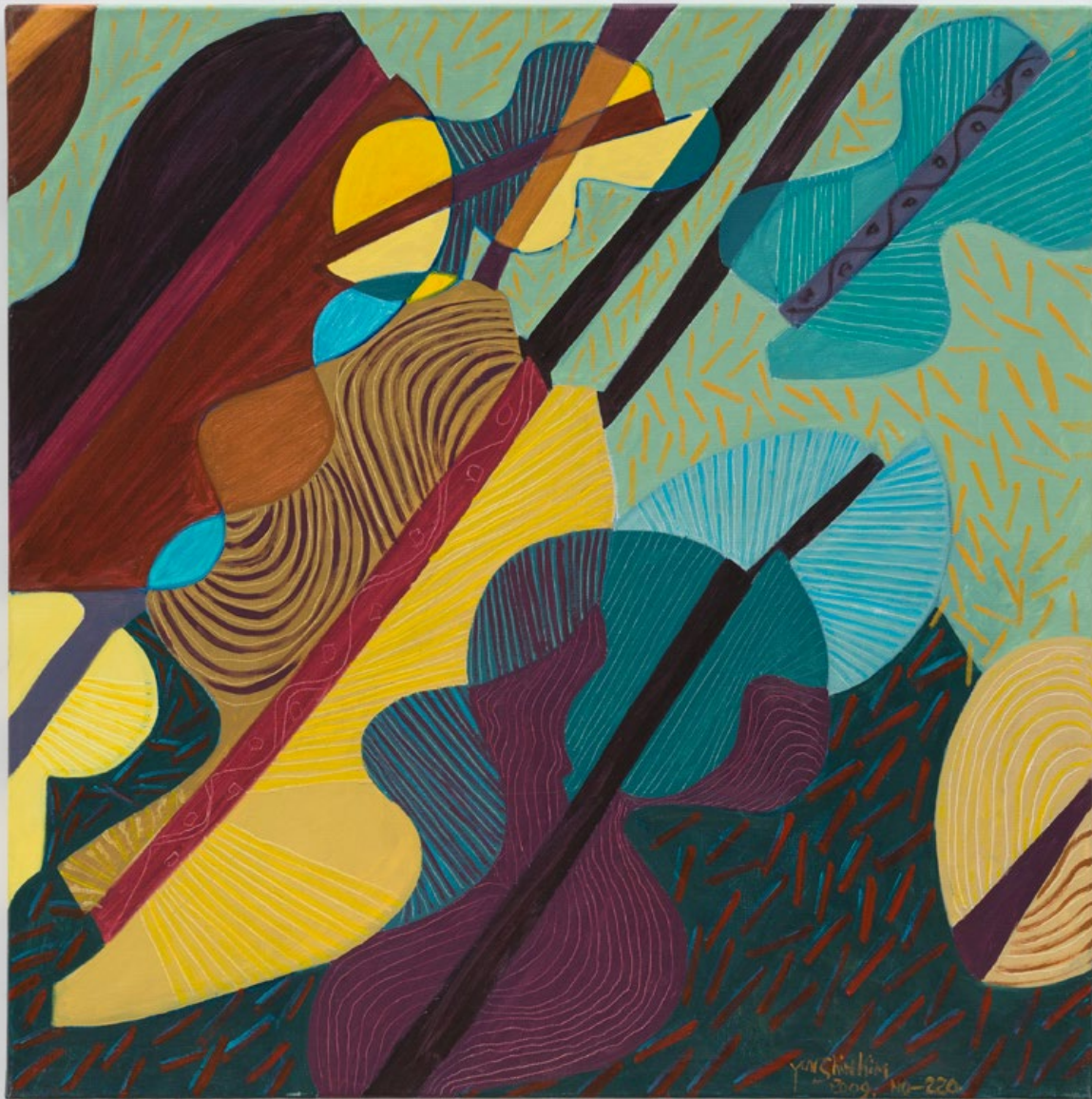
Venue: trail 2

1985. Gelatin silver print

6 prints, each: 14 1/16 x 9 37/64 x 1 21/32 inches (35.7 x 24.3 x 4.2 cm)

LM36571

\$31,000 USD plus applicable VAT



A selection of sculpture and paintings from the late 20th and early 21st century by Kim Yun Shin will be on view; Kim's work is currently included in *Foreigners Everywhere*, the 60th International Art Exhibition of La Biennale di Venezia, and in early 2025, she will have her debut solo exhibition in the United Kingdom at Lehmann Maupin London.

KIM YUN SHIN

Song of My Soul 2009-220

2009. Acrylic on canvas

35 2/5 x 35 2/5 inches (90 x 90 cm)

LM37258

\$60,000 USD plus applicable VAT



KIM YUN SHIN

Add Two Add One Divide Two Divide One 1998-617

1998. Algarrobo wood

23 5/8 x 36 5/8 x 9 7/16 inches (60 x 93 x 24 cm)

LM37426

\$100,000 USD plus applicable VAT



KIM YUN SHIN

Song of My Soul 2009-221

2009. Acrylic on canvas

35 2/5 x 35 2/5 inches (90 x 90 cm)

LM37259

\$60,000 USD plus applicable VAT



KIM YUN SHIN

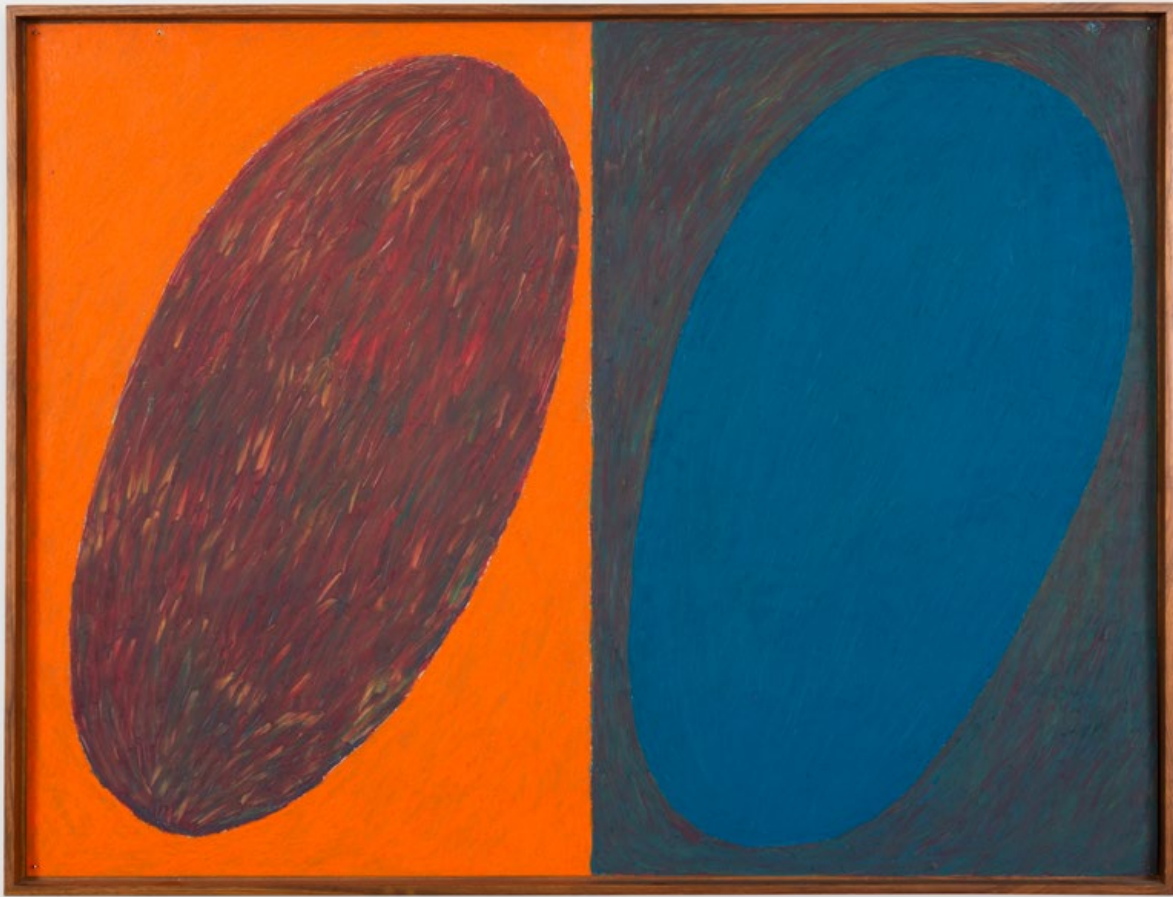
Song of My Soul 2009-222

2009. Acrylic on canvas

35 2/5 x 35 2/5 inches (90 x 90 cm)

LM37260

\$60,000 USD plus applicable VAT



MCARTHUR BINION

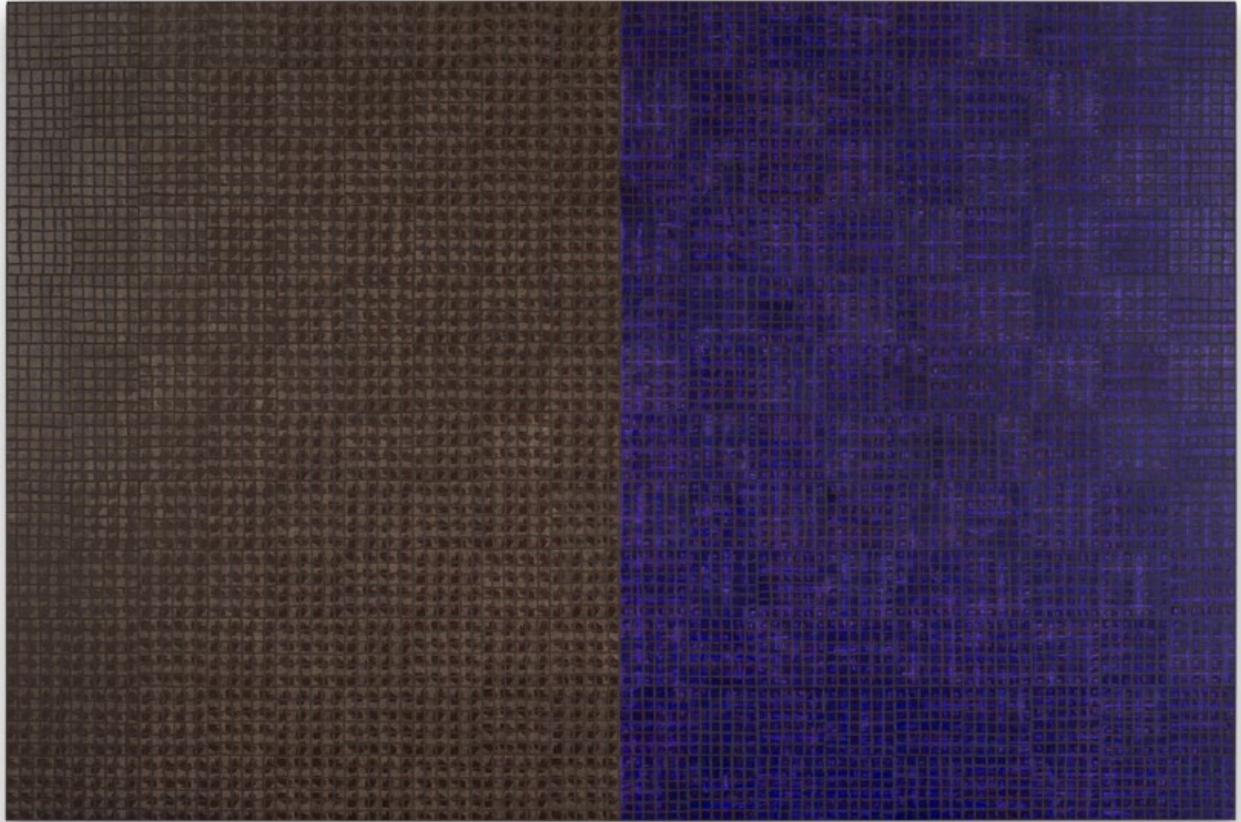
Untitled:Ovals

1980. Paint stick and wax crayon on aluminum

31 x 40 1/4 x 2 inches (78.7 x 102.2 x 5.1 cm)

LM35497

\$600,000 USD plus applicable VAT



MCARTHUR BINION

DNA: Portraits

2024. Paper, ink and paint stick on board

48 x 72 inches (121.9 x 182.9 cm)

LM37529

\$250,000 USD plus applicable VAT



LORIEL BELTRÁN

Sulfur Aerosol

2024. Latex paint on panel

80 x 60 inches (213.4 x 152.4 cm)

LM36776

\$65,000 USD plus applicable VAT



BILLY CHILDISH

wine dark sea

2024. Oil and charcoal on linen

72 1/16 x 96 1/16 inches (183 x 244 cm)

LM37740

€85,000 EUR plus applicable VAT



BILLY CHILDISH

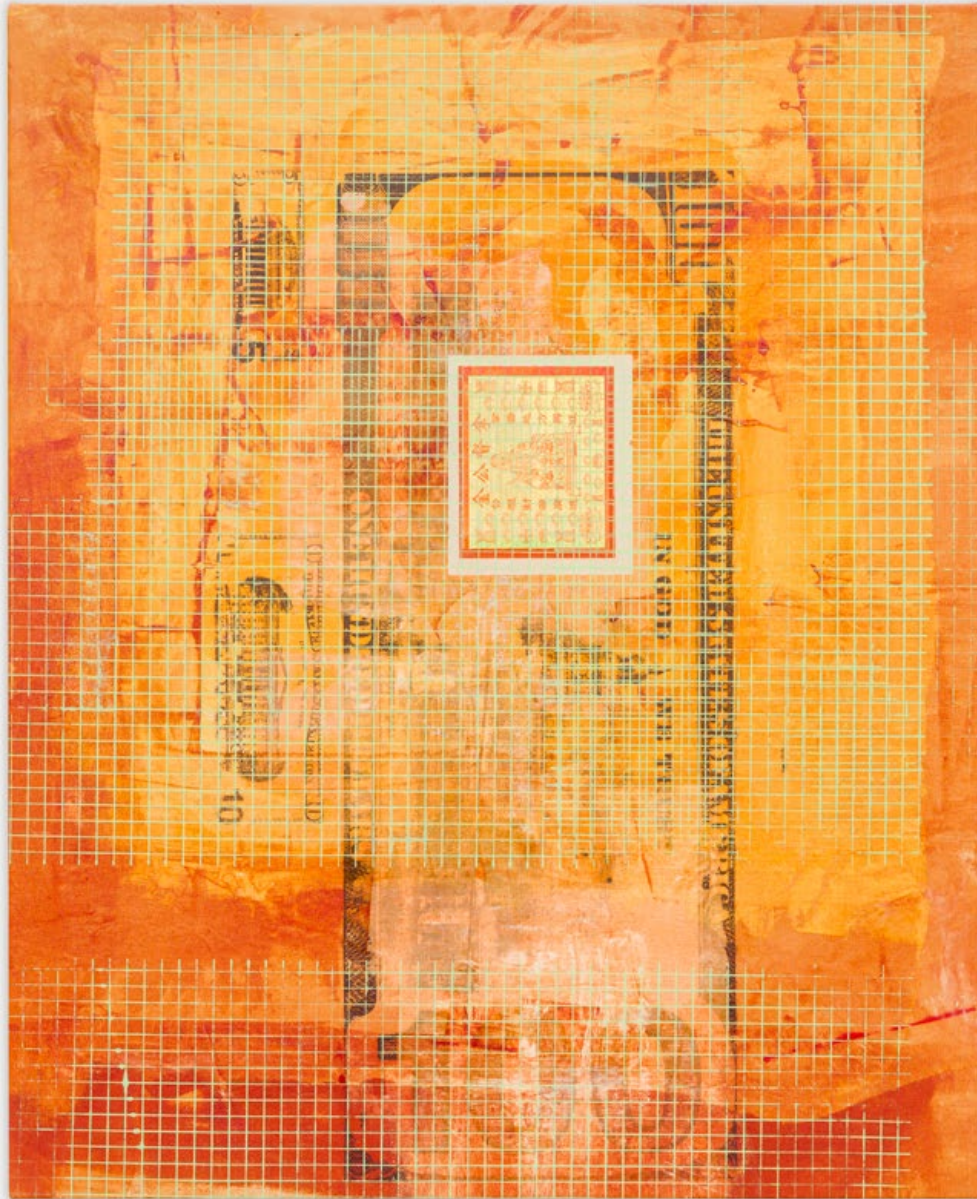
western moon set

2024. Oil and charcoal on linen

72 1/16 x 83 7/8 inches (183 x 213 cm)

LM37164

€75,000 EUR plus applicable VAT



MANDY EL-SAYEGH

Burning Square (Golden Yellow)

2024. Oil and acrylic on canvas with collaged and silkscreened elements, gold leaf, and joss paper

48 7/6 x 38 37/64 inches (123 x 98 cm)

LM36957

\$55,000 USD plus applicable VAT



NICHOLAS HLOBO

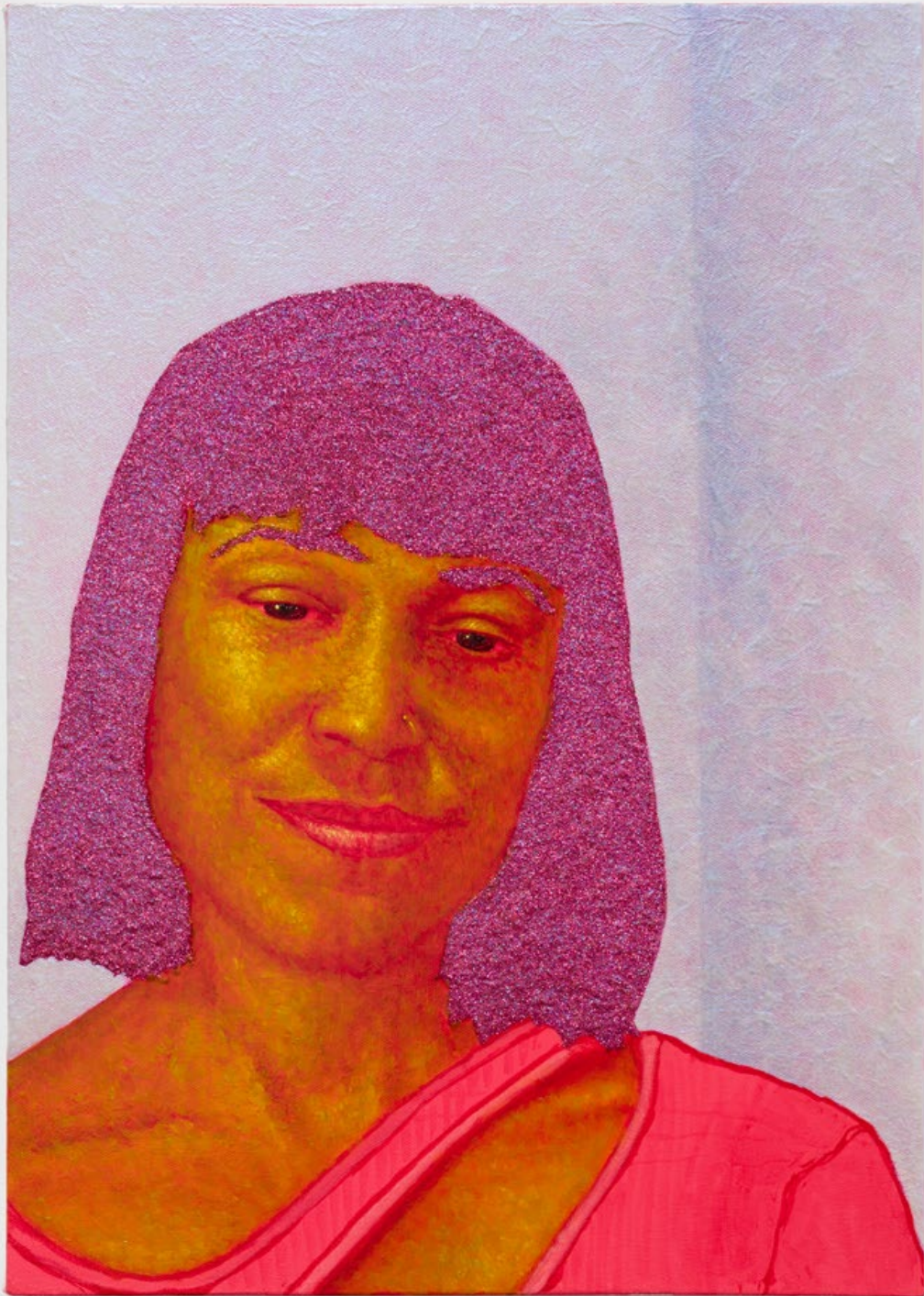
Isithunywa somnyele nonomatse

2022. Acrylic and ribbons on linen and cotton canvas

47 1/4 inches (120 cm), diameter

LM34160

\$80,000 USD plus applicable VAT



ARCMANORO NILES

Don't You Worry About the Distance We're Never Far Part (My Fallen Angel)

2024. Oil, acrylic, and glitter on canvas

20 x 14 inches (50.8 x 35.6 cm)

LM37331

\$50,000 USD plus applicable VAT



TAMMY NGUYEN

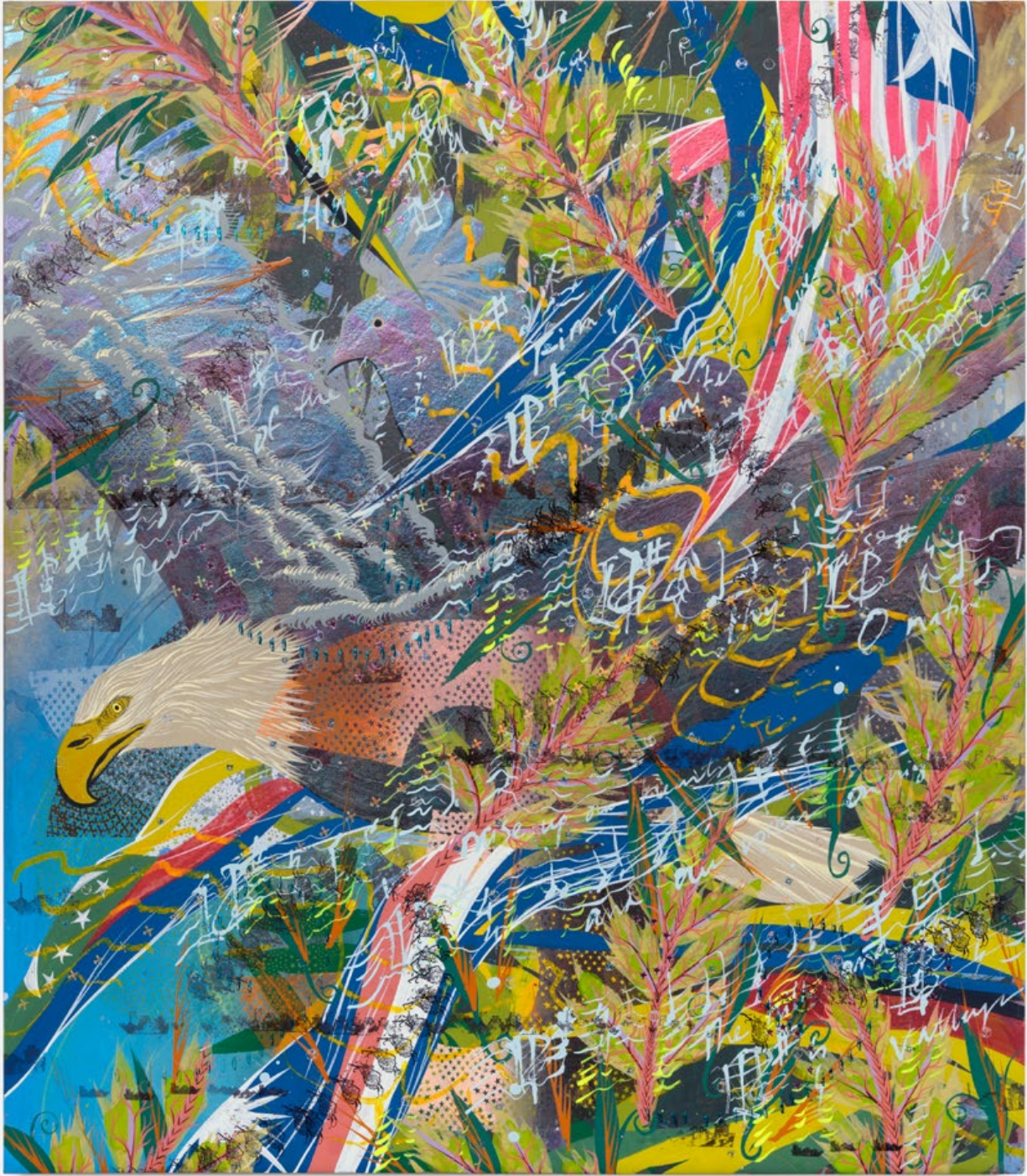
2:4:8 Ram and Vulture

2024. Watercolor, vinyl paint, pastel, silkscreen printing, rubber stamping, hot stamping, and metal leaf on paper stretched over wood and gator board panel

48 x 70 x 2 inches (121.9 x 177.8 x 5.1 cm)

LM37563

\$75,000 USD plus applicable VAT



TAMMY NGUYEN

2:4:8 Eagle and Crow

2024. Watercolor, vinyl paint, pastel, silkscreen printing, rubber stamping, hot stamping, and metal leaf on paper stretched over wood and gator board panel

40 x 35 x 2 inches (101.6 x 88.9 x 5.1 cm)

LM37564

\$35,000 USD plus applicable VAT



ALEX PRAGER

Hollywood (Day)

2024. Archival pigment print

43 x 59 1/4 x 2 1/4 inches (109.22 x 150.49 x 5.71 cm)

Edition of 6

LM36748

\$45,000 USD plus applicable VAT



ALEX PRAGER

Twilight

2021. Archival pigment print

49 x 42 1/2 x 2 inches (124.46 x 107.95 x 5.08 cm)

Edition of 6

LM33339

\$40,000 USD plus applicable VAT



ROBIN RHODE

Aloe Ferox

2022. C-print

8 panels, each: 21 1/4 x 28 1/4 x 1 1/2 inches (53.97 x 71.55 x 3.81 cm)

overall: 39 1/2 x 104 1/2 x 1 1/2 inches (100.2 x 265.4 x 3.81 cm)

Edition of 5

LM34541

€70,000 EUR plus applicable VAT

Oh La La!



ERWIN WURM

Dreamer

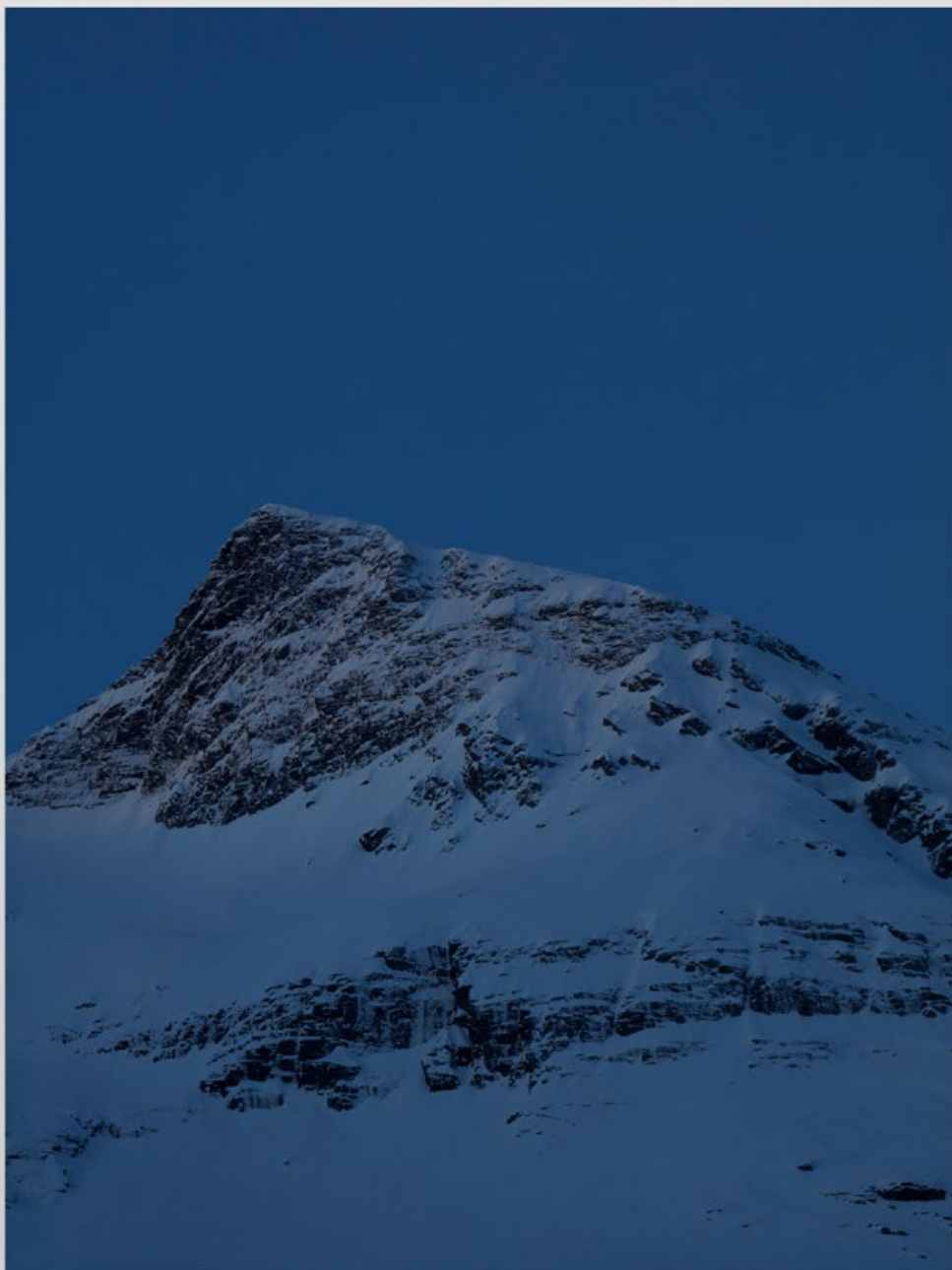
2024. Bronze, patina

59 1/16 x 31 1/2 x 15 3/4 inches (150 x 80 x 40 cm)

Edition of 3

LM37363

Please inquire



CATHERINE OPIE

Untitled #2 (Norway Mountain)

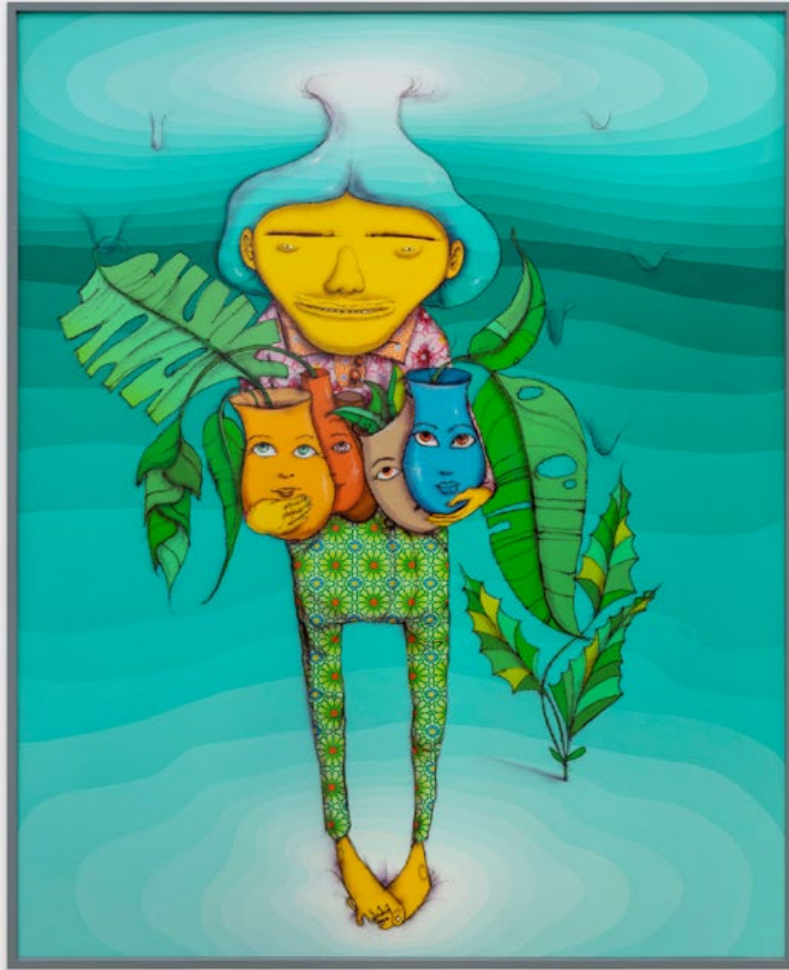
2024. Pigment print

78 1/2 x 59 1/2 x 2 inches (199.3 x 151.13 x 5.08 cm)

Edition of 5

LM37226

\$60,000 USD plus applicable VAT



OSGEMEOS

Cultivando os Sonhos (Cultivating Dreams)

2023. Mixed media on MDF Board

80 5/16 x 64 9/16 x 4 21/64 inches (204 x 164 x 11 cm)

LM36475

\$250,000 USD plus applicable VAT



CECILIA VICUÑA

Hombre tigre

2024. Oil on canvas

69 x 28 1/8 inches (175.3 x 71.4 cm)

LM37565

\$450,000 USD plus applicable VAT



BILLIE ZANGEWA

a day in the life of a gourmand

2024. Hand-stitched silk collage

22 27/32 x 16 15/16 inches (58 x 43 cm)

LM37589

\$60,000 USD plus applicable VAT

ABOUT LEHMANN MAUPIN

Rachel Lehmann and David Maupin co-founded Lehmann Maupin in 1996 in New York. Since inception, Lehmann Maupin has served as a leading contemporary art gallery with locations in the U.S., Europe, and Asia. For over 25 years, Lehmann Maupin has been instrumental in introducing international artists in new geographies and building long-lasting curatorial relationships. Known for championing diverse voices, the gallery's program proudly features artists whose work challenges notions of identity and shapes international culture. Today, the gallery has permanent locations in New York, Seoul, and London, as well as team members based in Hong Kong, Shanghai, Singapore, and Palm Beach. In recent years, with growing opportunities in new markets, the gallery has opened seasonal spaces in Aspen, Palm Beach, Taipei, and Beijing.

NEW YORK

501 West 24th Street
New York, NY 10011
1 212 255 2923
newyork@lehmannmaupin.com

SEOUL

213 Itaewon-ro, Yongsan-gu
Seoul, Korea 04349
82 2 725 0094
seoul@lehmannmaupin.com

LONDON

1 Cromwell Place
South Kensington, London SW7 2JE
44 20 8057 1880
london@lehmannmaupin.com