

■ GREG  
KUCERA  
GALLERY

212 THIRD AVENUE S  
SEATTLE, WA 98104  
206.624.0770

[www.gregkucera.com](http://www.gregkucera.com)  
[staff@gregkucera.com](mailto:staff@gregkucera.com)



**HUMAIRA ABID**  
*FOLDED STORIES: SECOND SERIES - VI, 2023*  
Carved pine wood  
15.5 x 11.5 x .5 inches  
\$9,500

■ GREG  
KUCERA  
GALLERY

212 THIRD AVENUE S  
SEATTLE, WA 98104  
206.624.0770

www.gregkucera.com  
staff@gregkucera.com



**HUMAIRA ABID**  
*FOLDED STORIES: SECOND SERIES - VII, 2024*  
Carved pine wood  
14 x 11 x 1.5 inches  
\$9,500

■ GREG  
KUCERA  
GALLERY

212 THIRD AVENUE S  
SEATTLE, WA 98104  
206.624.0770

www.gregkucera.com  
staff@gregkucera.com



**HUMAIRA ABID**  
*FOLDED STORIES: SECOND SERIES - VIII, 2024*  
Carved pine wood  
15 x 11.5 x 2 inches  
\$9,500

■ GREG  
KUCERA  
GALLERY

212 THIRD AVENUE S  
SEATTLE, WA 98104  
206.624.0770

[www.gregkucera.com](http://www.gregkucera.com)  
[staff@gregkucera.com](mailto:staff@gregkucera.com)



**HUMAIRA ABID**

*FRAGMENTS OF HOME LEFT BEHIND I (VILLAGE ON FIRE), 2020*

Carved and stained pine wood, pigments on handmade wasli paper, and plexiglass

4 x 9 x 4.5 inches

\$7,000

■ GREG  
KUCERA  
GALLERY

212 THIRD AVENUE S  
SEATTLE, WA 98104  
206.624.0770

[www.gregkucera.com](http://www.gregkucera.com)  
[staff@gregkucera.com](mailto:staff@gregkucera.com)



**HUMAIRA ABID**

*FRAGMENTS OF HOME LEFT BEHIND II (INFANT BODY)*, 2020

Carved and stained pine wood, pigments on handmade wasli paper, and plexiglass

4 x 9 x 4.5 inches

\$7,000

■ GREG  
KUCERA  
GALLERY

212 THIRD AVENUE S  
SEATTLE, WA 98104  
206.624.0770

[www.gregkucera.com](http://www.gregkucera.com)  
[staff@gregkucera.com](mailto:staff@gregkucera.com)



**HUMAIRA ABID**

*FRAGMENTS OF HOME LEFT BEHIND III (FLEEING CHILDREN)*, 2020

Carved and stained pine wood, pigments on handmade wasli paper, and plexiglass

4 x 9 x 4.5 inches

\$7,000

■ GREG  
KUCERA  
GALLERY

212 THIRD AVENUE S  
SEATTLE, WA 98104  
206.624.0770

[www.gregkucera.com](http://www.gregkucera.com)  
[staff@gregkucera.com](mailto:staff@gregkucera.com)



**HUMAIRA ABID**

*FRAGMENTS OF HOME LEFT BEHIND IV (MOSQUE EXPLOSION)*, 2020

Carved and stained pine wood, pigments on handmade wasli paper, and plexiglass

4 x 9 x 4.5 inches

\$7,000

■ GREG  
KUCERA  
GALLERY

212 THIRD AVENUE S  
SEATTLE, WA 98104  
206.624.0770

[www.gregkucera.com](http://www.gregkucera.com)  
[staff@gregkucera.com](mailto:staff@gregkucera.com)



**HUMAIRA ABID**

*FRAGMENTS OF HOME LEFT BEHIND V (REFUGEE CAMP), 2020*

Carved and stained pine wood, pigments on handmade wasli paper, and plexiglass

4 x 9 x 4.5 inches

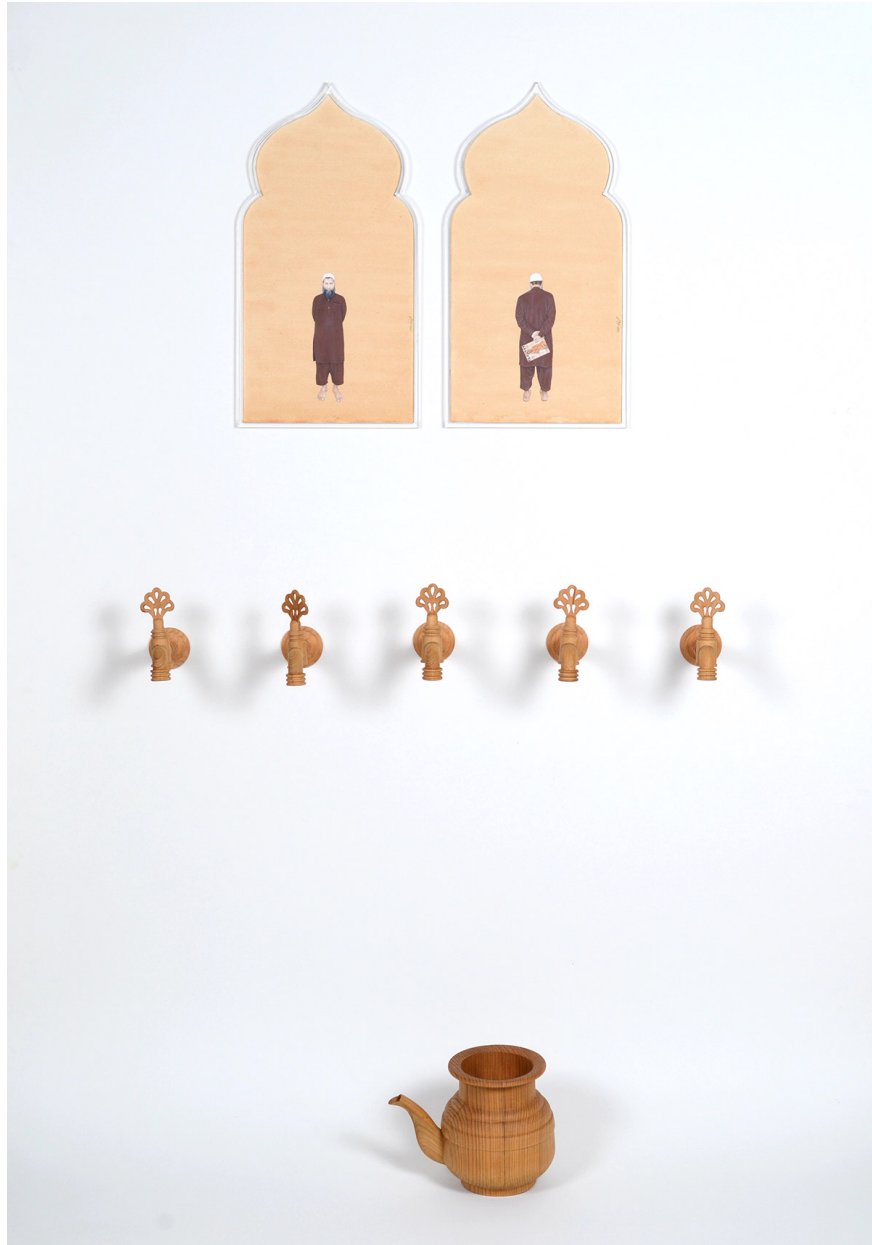
\$7,000



■ GREG  
KUCERA  
GALLERY

212 THIRD AVENUE S  
SEATTLE, WA 98104  
206.624.0770

www.gregkucera.com  
staff@gregkucera.com



**HUMAIRA ABID**

*SACRED GAMES II, 2020*

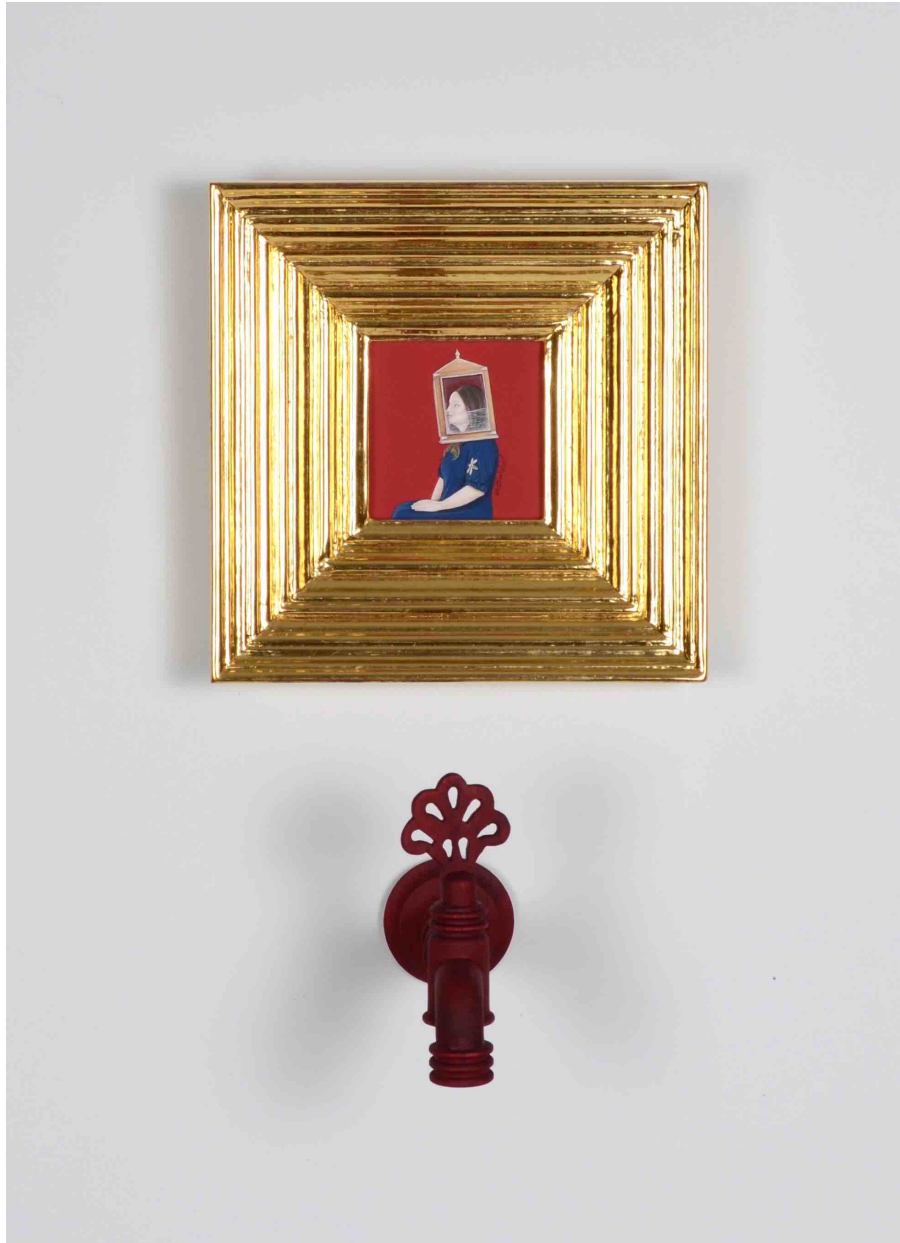
Carved pine wood, pigments and tea wash on handmade wasli paper framed in lucite  
60 x 27 x 12 inches installed (approximately)

\$16,500

■ GREG  
KUCERA  
GALLERY

212 THIRD AVENUE S  
SEATTLE, WA 98104  
206.624.0770

www.gregkucera.com  
staff@gregkucera.com



**HUMAIRA ABID**

*SELF-PORTRAIT 3, 2022*

Carved, stained and 24k gilded pine wood, gouache and pigments on handmade wasli paper,  
tru-vu museum acrylic  
13 x 8.5 x 6.25 inches  
\$7,200

■ GREG  
KUCERA  
GALLERY

212 THIRD AVENUE S  
SEATTLE, WA 98104  
206.624.0770

[www.gregkucera.com](http://www.gregkucera.com)  
[staff@gregkucera.com](mailto:staff@gregkucera.com)



**HUMAIRA ABID**

*TEMPTING EYES XV*, 2021

Carved and stained pine wood, pigments on handmade wasli paper, and plexiglass

4 x 9 x 4.5 inches

\$7,000

■ GREG  
KUCERA  
GALLERY

212 THIRD AVENUE S  
SEATTLE, WA 98104  
206.624.0770

[www.gregkucera.com](http://www.gregkucera.com)  
[staff@gregkucera.com](mailto:staff@gregkucera.com)



**HUMAIRA ABID**

*WOMAN IN BLACK, 2022*

Carved pine and mahogany, gouache and pigment on handmade wasli paper, and tru-vu  
museum acrylic

62 x 24 x 12 inches

\$14,500

■ GREG  
KUCERA  
GALLERY

212 THIRD AVENUE S  
SEATTLE, WA 98104  
206.624.0770

www.gregkucera.com  
staff@gregkucera.com



**HUMAIRA ABID**

*WOMAN WITH A BREAST PUMP*, 2022

Carved and 24k gilded pine wood, gouache and pigments on handmade wasli paper, and tru-vu museum acrylic

18 x 18 x 1 inches

\$14,500

■ GREG  
KUCERA  
GALLERY

212 THIRD AVENUE S  
SEATTLE, WA 98104  
206.624.0770

[www.gregkucera.com](http://www.gregkucera.com)  
[staff@gregkucera.com](mailto:staff@gregkucera.com)



**HUMAIRA ABID**  
*ZAAD-E-RAAH (PROVISIONS FOR A JOURNEY)*, 2020  
Carved pine  
13 x 12 x 9 inches  
\$8,500

■ GREG  
KUCERA  
GALLERY

212 THIRD AVENUE S  
SEATTLE, WA 98104  
206.624.0770

www.gregkucera.com  
staff@gregkucera.com



**JUVENTINO ARANDA**

*EVERYTHING THAT GLITTERS IS NOT GOLD, SELL THE COW, TIJUANA (JOSHUA TREE),*  
2024

Acrylic and oil stick on Pendleton wool

75 x 55 x 2 inches

\$11,000

■ GREG  
KUCERA  
GALLERY

212 THIRD AVENUE S  
SEATTLE, WA 98104  
206.624.0770

www.gregkucera.com  
staff@gregkucera.com



**JUVENTINO ARANDA**

*THIS LAND IS NOT FOR YOU OR ME, PAISA A PÁŠXA, WALLA WALLA (OLYMPIC), 2024*

Acrylic and oil stick on Pendleton wool

75 x 55 x 2 inches

\$11,000



■ GREG  
KUCERA  
GALLERY

212 THIRD AVENUE S  
SEATTLE, WA 98104  
206.624.0770

www.gregkucera.com  
staff@gregkucera.com



**JUVENTINO ARANDA**

*UPSTREAM THERE ONCE WAS A RIVER, FIRST SNOWFALL, WOODBURN (CRATER LAKE), 2024*

Acrylic and oil stick on Pendleton wool

75 x 55 x 2 inches

\$11,000

■ GREG  
KUCERA  
GALLERY

212 THIRD AVENUE S  
SEATTLE, WA 98104  
206.624.0770

[www.gregkucera.com](http://www.gregkucera.com)  
[staff@gregkucera.com](mailto:staff@gregkucera.com)



**ANTHONY WHITE**  
*ALWAYS-ON DISPLAY*, 2024  
PLA on panel  
76 x 38 inches  
\$17,800



■ GREG  
KUCERA  
GALLERY

212 THIRD AVENUE S  
SEATTLE, WA 98104  
206.624.0770

www.gregkucera.com  
staff@gregkucera.com



**ANTHONY WHITE**  
*HAT TRICK*, 2024  
PLA on panel  
76 x 38 inches  
\$17,800

■ GREG  
KUCERA  
GALLERY

212 THIRD AVENUE S  
SEATTLE, WA 98104  
206.624.0770

www.gregkucera.com  
staff@gregkucera.com



**ANTHONY WHITE**  
*LIFE IS A TOY CHEST*, 2024  
PLA on panel  
48 x 36 inches  
\$12,000