

ART BASEL MIAMI BEACH 2024 – SURVEY SECTOR **BOOTH S7**

ÉMILIE CHARMY 1878-1975



The gallery is delighted to present a solo exhibition of Émilie Charmy at Art Basel Miami Beach.

This is an opportunity to rediscover this singular and provocative artist, one of the most original voices of modern art in Paris during the first half of the 20th century. Her paintings were part of the great artistic currents of the pre-First World War period, which she subsequently pursued in a singular and solitary way. Many of the great writers and critics of the time wrote about Charmy's work.

What made Émilie Charmy's art so distinctive and provocative in her day was that it seemed to escape what was expected of a female artist. Critics were unanimous in finding virile qualities in her expressive, physical and rugged style, but they were certainly also reacting to her treatment of subjects, particularly nudes, some of which display a remarkably frank and complex sexuality. Charmy's success continued into the 1930s, until the Second World War wiped out most of her personal networks.

Although she continued to develop her work well into her later years, notably with self-portraits that present a curious and fascinating fusion of introspection and masquerade, Émilie Charmy's work is only beginning to resurface today.



Émilie Charmy (1878-1974)

Baigneuse 1920-1921

Oil on canvas, signed.

116 x 89 cm

Exhibitions : *Emilie Charmy* Galerie d'Œuvres d'Art Paris 1921, with texts by Roland Dorgelès, Pierre Mac-Orlan, Henri Béraud.

400.000 \$



Émilie Charmy (1878-1974)

Autoportrait 1919

Oil on canvas, signed.

116 x 89 cm

280.000 \$



Émilie Charmy (1878-1974)

Autoportrait. 1906.

Oil on canvas, signed.

46 x 38 cm

68.000 \$



Émilie Charmy (1878-1974)

Hélène Devinoï en manteau de fourrure. 1925-1928

Oil on canvas, signed.

89 x 116 cm.

280.000 \$



Emilie Charmy (1878-1974)

Autoportrait. Circa 1910.

Oil on canvas-board, signed.

41 x 33 cm

40.000 \$



Emilie Charmy (1878-1974)

Autoportrait au chapeau blanc circa 1935-1940.

Oil on board, signed.

41 x 33 cm

40.000 \$



Emilie Charmy (1878-1974)

Autoportrait au chapeau blanc circa 1935.

Oil on canvas-board, signed.

41 x 33 cm

40.000 \$



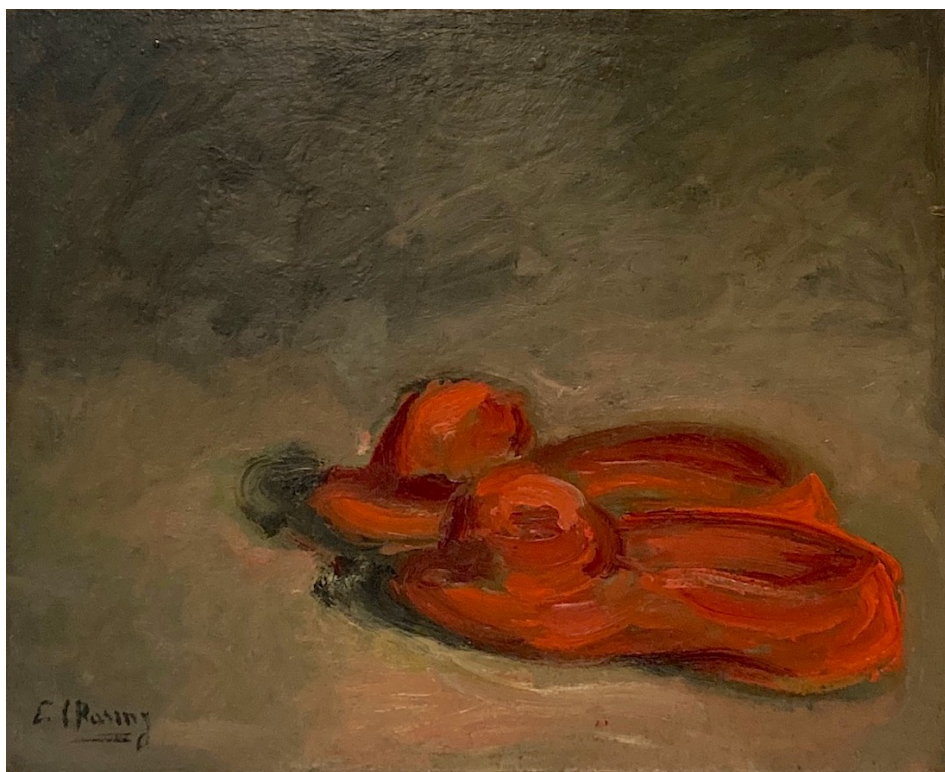
Émilie Charny (1878-1974)

Autoportrait. Circa 1960-1965

Oil on canvas, signed with atelier stamp

41 x 33 cm

48.000 \$



Emilie Charmy (1878-1974)

Chaussons 1928.

Oil on board, signed.

33 x 41 cm

45.000 \$